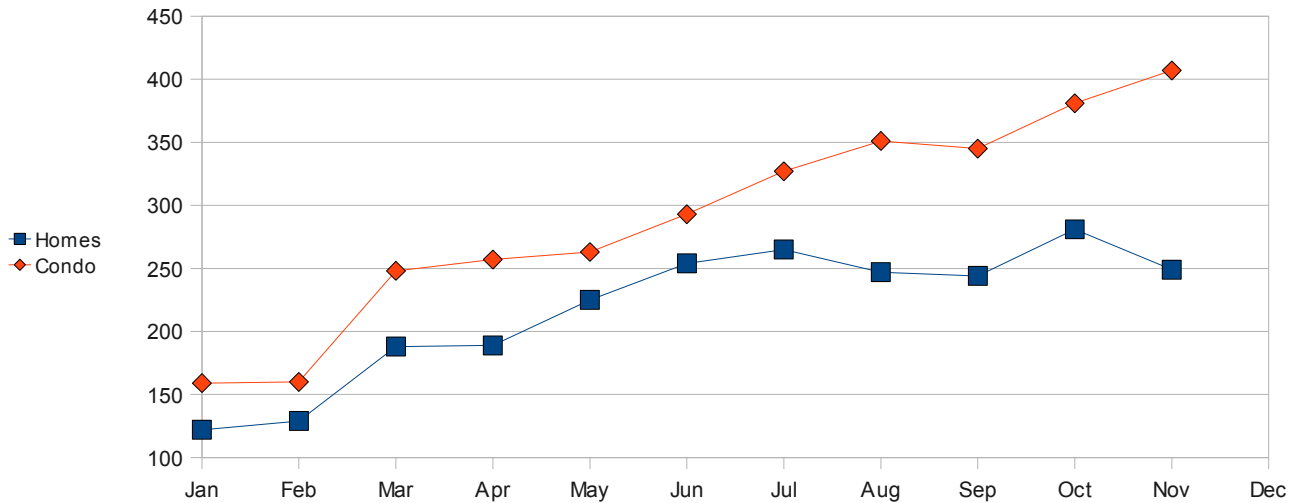
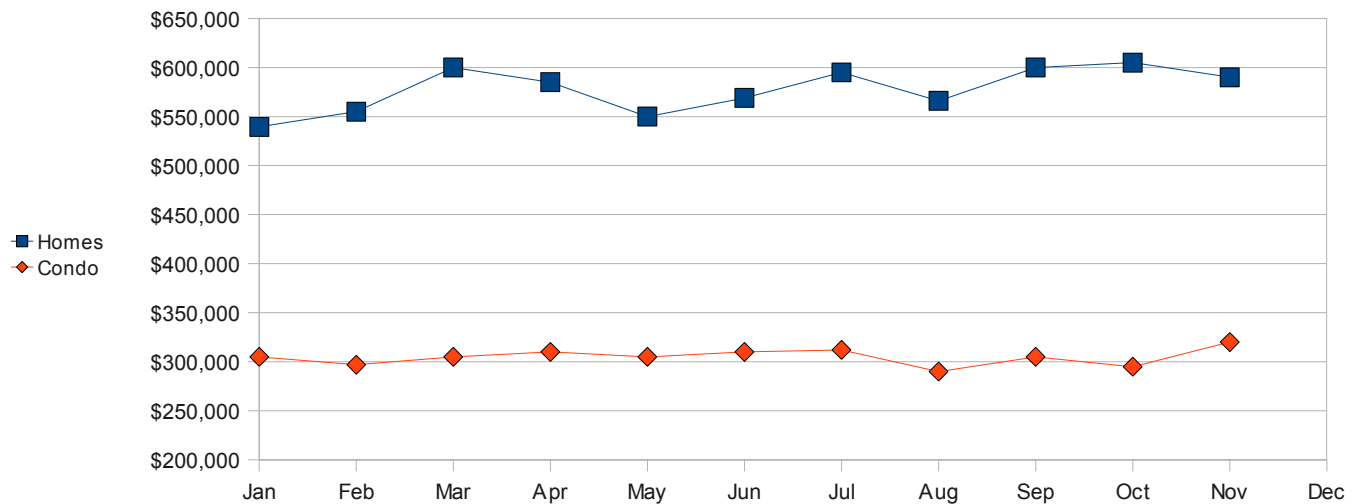


YTD Oahu Real Estate Market Data as of 12/3/2009

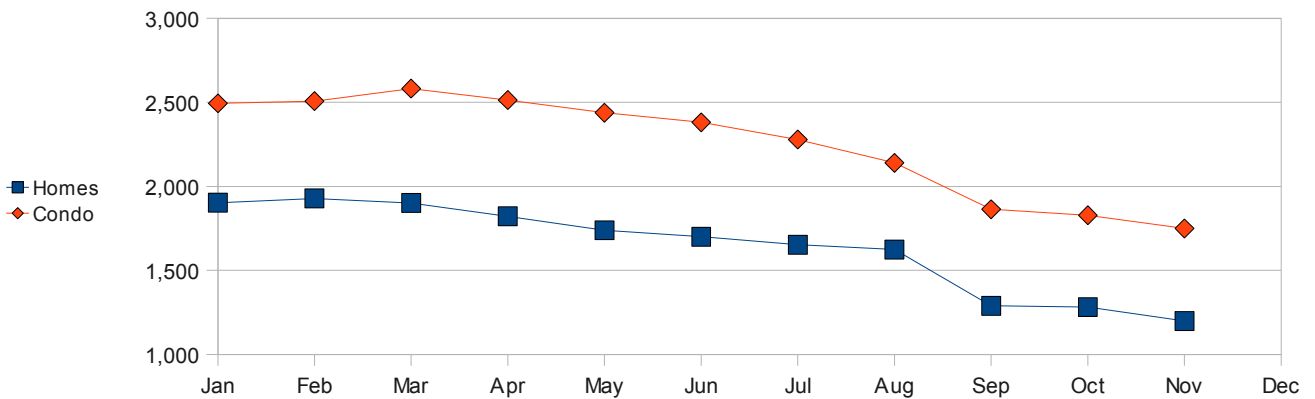
Sales		Jan	Feb	Mar	Apr	May	Jun	Jul	Aug	Sep	Oct	Nov	Dec
		Homes	122	129	188	189	225	254	265	244	281	249	
	Condo	159	160	248	257	263	293	327	351	345	381	407	



Median Price		Jan	Feb	Mar	Apr	May	Jun	Jul	Aug	Sep	Oct	Nov	Dec
		Homes	\$539,500	\$555,000	\$600,000	\$585,000	\$550,000	\$569,000	\$595,000	\$566,000	\$600,000	\$605,000	\$590,000
	Condo	\$305,000	\$297,000	\$305,000	\$310,000	\$305,000	\$310,000	\$312,000	\$290,000	\$305,000	\$295,000	\$320,000	



Inventory		Jan	Feb	Mar	Apr	May	Jun	Jul	Aug	Sep	Oct	Nov	Dec
		Homes	1,903	1,928	1,901	1,822	1,739	1,700	1,653	1,624	1,289	1,282	1,199
	Condo	2,494	2,507	2,582	2,514	2,438	2,381	2,279	2,140	1,864	1,828	1,749	



(Chart by Hoku Real Estate, data from Honolulu Board of Realtors)