

Monthly Housing Statistics

OCTOBER 2014



SINGLE FAMILY HOMES

Median Sales Price	
\$690,000	+7.8%
Closed Sales	
298	+2.8%
Average Sales Price	
\$869,147	+12.5%

CONDOS

Median Sales Price	
\$352,750	+8.5%
Closed Sales	
448	+6.9%
Average Sales Price	
\$411,023	+15.6%

INDEX:

Monthly Indicators	2
Closed Sales	3
Median Sales Price	4
Median Days on Market	5
New Listings	6
Pending Sales	7
Months of Inventory	8
Active Listings	9
Average Sales Price	10
% of Original Listing Price Received	11
Active Continue to Show	12
Housing Supply Overview	13
Pending Sales (by price range)	14-15
Median Days on Market (by price range)	16-17
% of list price received (by price range)	18-19
Inventory of Homes (by price range)	20-21
Months Supply of Inventory (price range)	22-23
Historical Graphs	24-25

Monthly Indicators

OCTOBER 2014

	Single Family Homes					
	Oct-14	Oct-13	%	YTD-14	YTD-13	%
Closed Sales	298	290	2.8%	2,776	2,728	1.8%
Median Sales Price	\$690,000	\$ 640,000	7.8%	\$670,000	\$ 641,000	4.5%
Median Days on Market	31	22	40.9%	21	20	5.0%
New Listings	342	409	-16.4%	4,174	3,839	8.7%
Pending Sales	372	373	-0.3%	4,247	3,889	9.2%
Months of Inventory	2.9	2.9	0.0%	--	--	--
Active Listings	1,227	1,170	4.9%	--	--	--
Average Sales Price	\$869,147	\$ 772,860	12.5%	\$836,617	\$ 790,533	5.8%
% of Original Listing Price Received	97.6%	100.0%	-2.4%	98.4%	98.6%	-0.2%

*YTD data includes revisions

	Condos					
	Oct-14	Oct-13	%	YTD-14	YTD-13	%
Closed Sales	448	419	6.9%	4,057	4,050	0.2%
Median Sales Price	\$352,750	\$ 325,000	8.5%	\$350,000	\$ 330,000	6.1%
Median Days on Market	23	19	21.1%	23	21	9.5%
New Listings	538	567	-5.1%	5,830	5,163	12.9%
Pending Sales	568	518	9.7%	5,513	5,315	3.7%
Months of Inventory	3.3	3.1	6.5%	--	--	--
Active Listings	1,825	1,658	10.1%	--	--	--
Average Sales Price	\$411,023	\$ 355,635	15.6%	\$419,830	\$ 395,337	6.2%
% of Original Listing Price Received	96.6%	98.5%	-1.9%	97.3%	97.5%	-0.2%

*YTD data includes revisions

SOURCE: Honolulu Board of REALTORS®, compiled from MLS data.

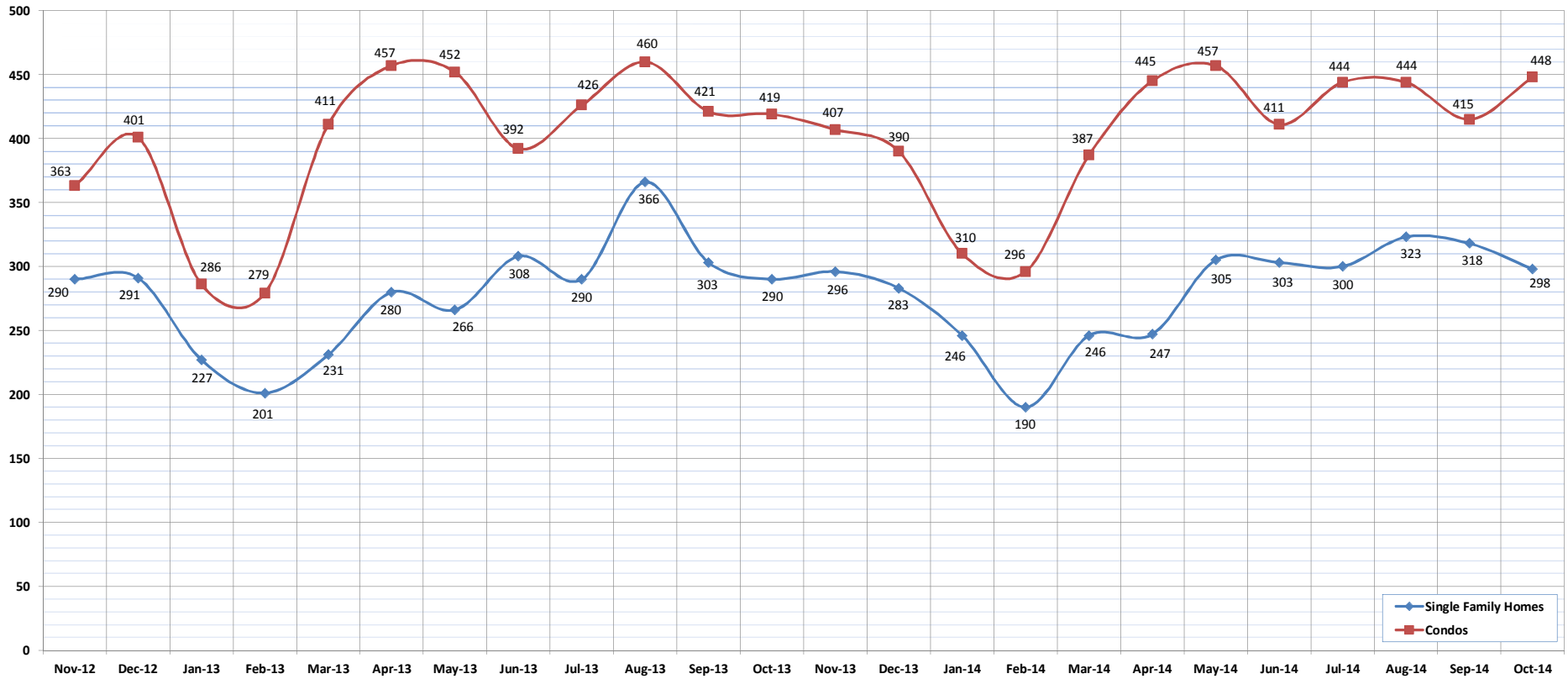


Closed Sales

October-14

OAHU, HAWAII

(A count of all properties that have closed in a given month.)



	Nov-12	Dec-12	Jan-13	Feb-13	Mar-13	Apr-13	May-13	Jun-13	Jul-13	Aug-13	Sep-13	Oct-13	Nov-13	Dec-13	Jan-14	Feb-14	Mar-14	Apr-14	May-14	Jun-14	Jul-14	Aug-14	Sep-14	Oct-14
Closed Sales: Single Family Homes	290	291	227	201	231	280	266	308	290	366	303	290	296	283	246	190	246	247	305	303	300	323	318	298
Closed Sales: Condos	363	401	286	279	411	457	452	392	426	460	421	419	407	390	310	296	387	445	457	411	444	444	415	448
Closed Sales: Total	653	692	513	480	642	737	718	700	716	826	724	709	703	673	556	486	633	692	762	714	744	767	733	746

SOURCE: Honolulu Board of REALTORS®, compiled from MLS data.

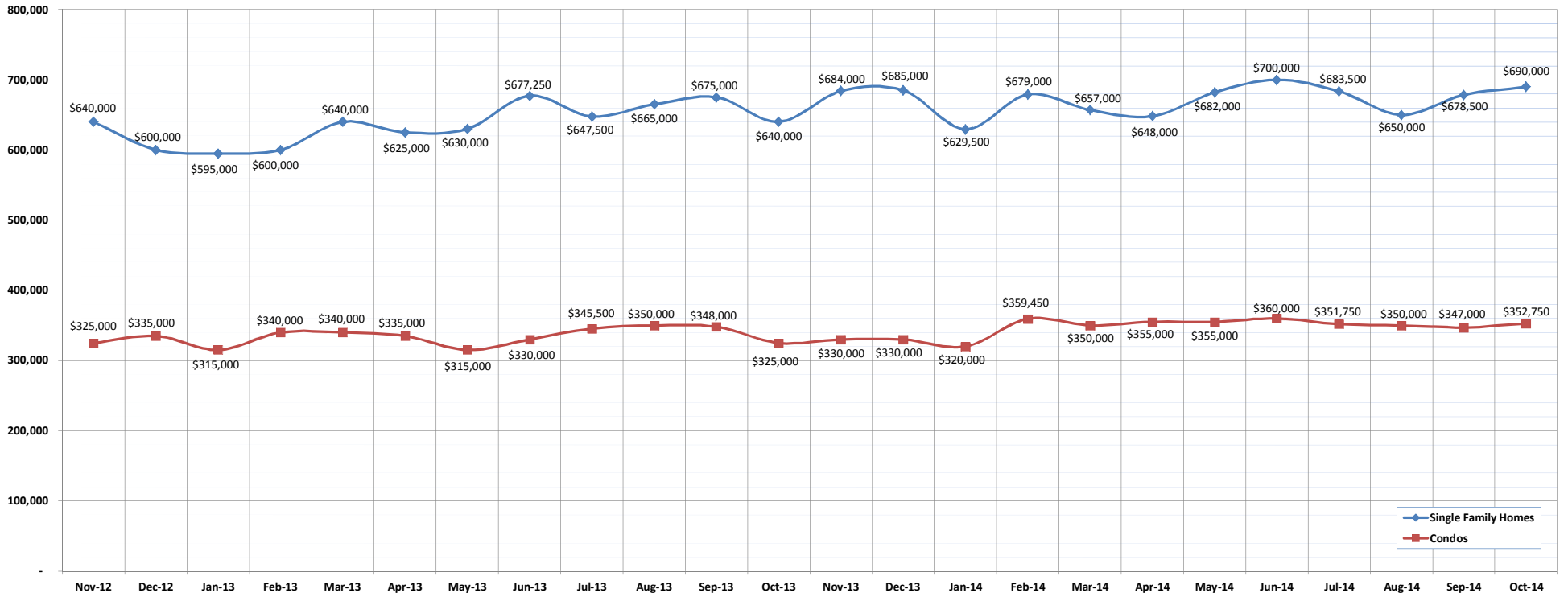


Median Sales Price

October-14

OAHU, HAWAII

(The median sales price for all closed properties in a given month.)



	Nov-12	Dec-12	Jan-13	Feb-13	Mar-13	Apr-13	May-13	Jun-13	Jul-13	Aug-13	Sep-13	Oct-13	Nov-13	Dec-13	Jan-14	Feb-14	Mar-14	Apr-14	May-14	Jun-14	Jul-14	Aug-14	Sep-14	Oct-14
Median Sales Price : SFH	640,000	600,000	595,000	600,000	640,000	625,000	630,000	677,250	647,500	665,000	675,000	640,000	684,000	685,000	629,500	679,000	657,000	648,000	682,000	700,000	683,500	650,000	678,500	690,000
Median Sales Price: Condos	325,000	335,000	315,000	340,000	340,000	335,000	315,000	330,000	345,500	350,000	348,000	325,000	330,000	330,000	320,000	359,450	350,000	355,000	355,000	360,000	351,750	350,000	347,000	352,750

SOURCE: Honolulu Board of REALTORS® , compiled from MLS data.

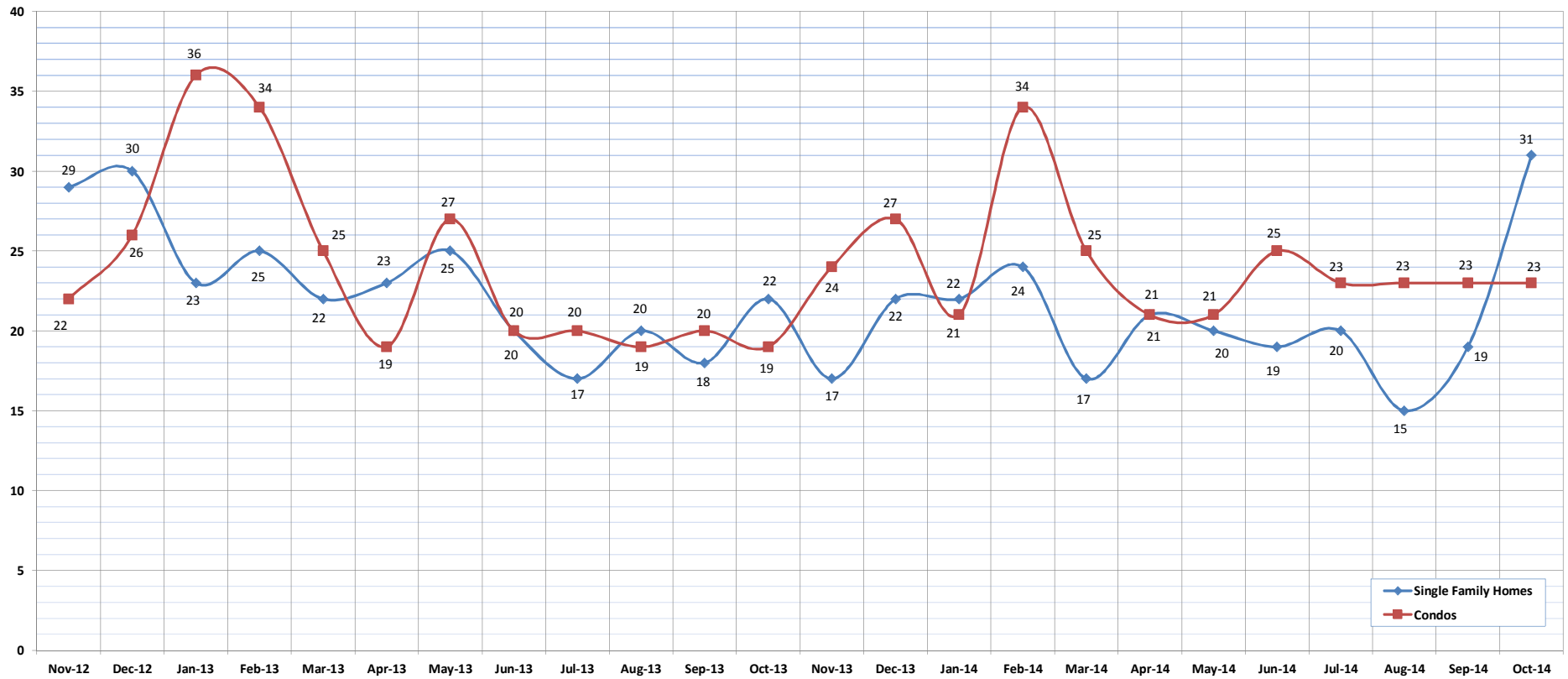


Median Days on Market

October-14

OAHU, HAWAII

(The median number of days between when a property is first listed and when an offer is accepted.)



	Nov-12	Dec-12	Jan-13	Feb-13	Mar-13	Apr-13	May-13	Jun-13	Jul-13	Aug-13	Sep-13	Oct-13	Nov-13	Dec-13	Jan-14	Feb-14	Mar-14	Apr-14	May-14	Jun-14	Jul-14	Aug-14	Sep-14	Oct-14
Median Days on Market: SFH	29	30	23	25	22	23	25	20	17	20	18	22	17	22	22	24	17	21	20	19	20	15	19	31
Median Days on Market: Condos	22	26	36	34	25	19	27	20	20	19	20	19	24	27	21	34	25	21	21	25	23	23	23	23

SOURCE: Honolulu Board of REALTORS®, compiled from MLS data.

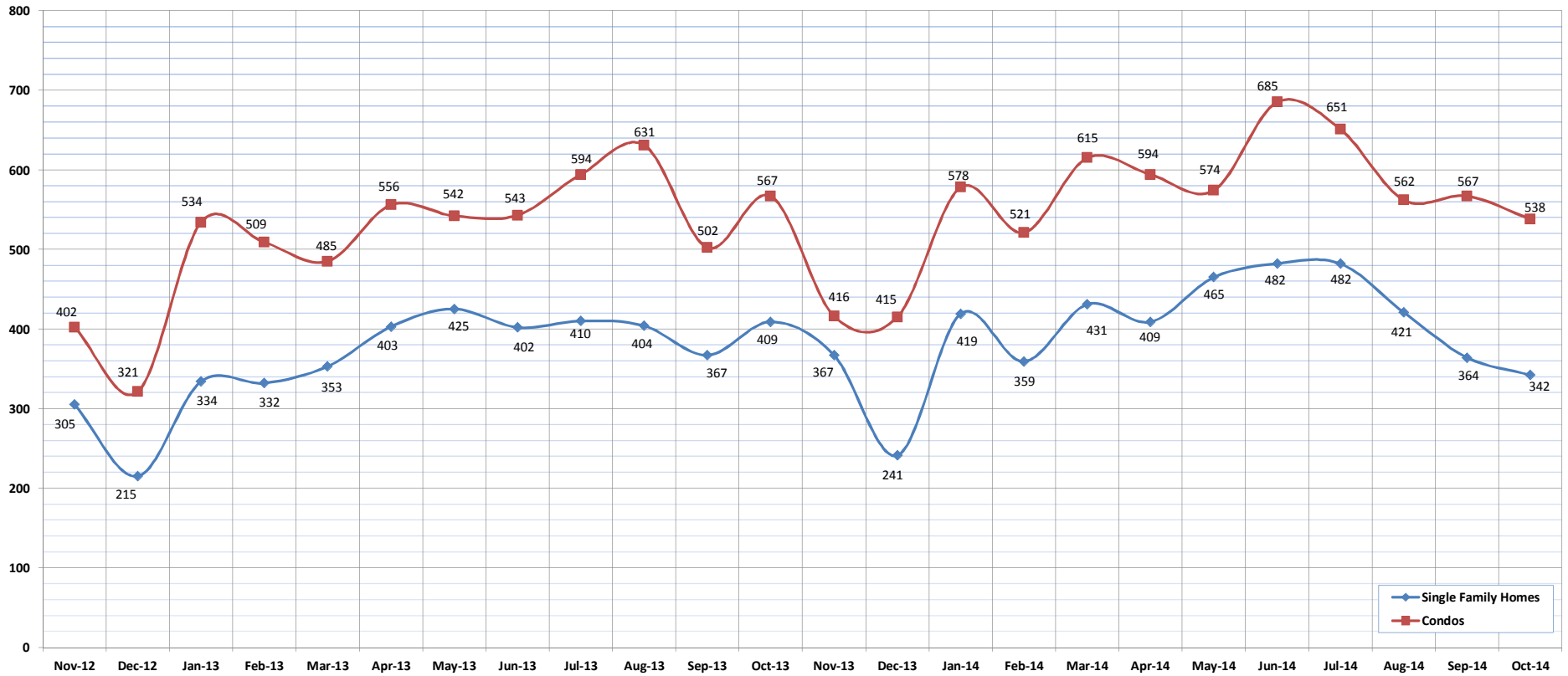


New Listings

October-14

OAHU, HAWAII

(A count of the properties that have been newly listed on the market in a given month.)



	Nov-12	Dec-12	Jan-13	Feb-13	Mar-13	Apr-13	May-13	Jun-13	Jul-13	Aug-13	Sep-13	Oct-13	Nov-13	Dec-13	Jan-14	Feb-14	Mar-14	Apr-14	May-14	Jun-14	Jul-14	Aug-14	Sep-14	Oct-14
New Listings: Single Family Homes	305	215	334	332	353	403	425	402	410	404	410	409	367	241	419	359	431	409	465	482	482	421	364	342
New Listings: Condos	402	321	534	509	485	556	542	543	594	631	502	567	416	415	578	521	615	594	574	685	651	562	567	538
New Listings: Total	707	536	868	841	838	959	967	945	1004	1035	869	976	783	656	997	880	1046	1003	1039	1167	1133	983	931	880

SOURCE: Honolulu Board of REALTORS®, compiled from MLS data.

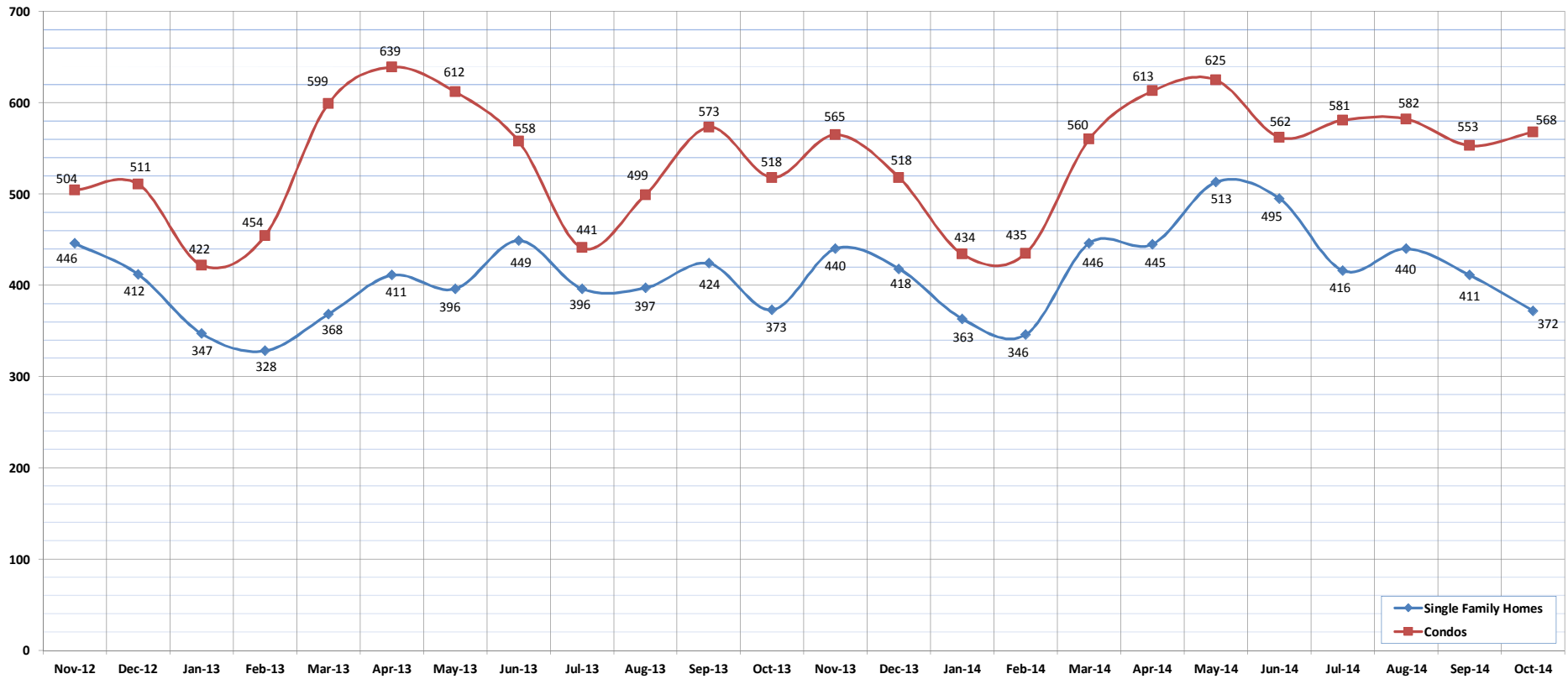


Pending Sales

October-14

OAHU, HAWAII

(A count of the properties that have offers accepted on them in a given month.)



	Nov-12	Dec-12	Jan-13	Feb-13	Mar-13	Apr-13	May-13	Jun-13	Jul-13	Aug-13	Sep-13	Oct-13	Nov-13	Dec-13	Jan-14	Feb-14	Mar-14	Apr-14	May-14	Jun-14	Jul-14	Aug-14	Sep-14	Oct-14
Pending Sales: Single Family Homes	446	412	347	328	368	411	396	449	396	397	424	373	440	418	363	346	446	445	513	495	416	440	411	372
Pending Sales: Condos	504	511	422	454	599	639	612	558	441	499	573	518	565	518	434	435	560	613	625	562	581	582	553	568
Pending Sales: Total	950	923	769	782	967	1050	1008	1007	837	896	997	891	1005	936	797	781	1006	1058	1138	1057	997	1022	964	940

SOURCE: Honolulu Board of REALTORS®, compiled from MLS data.

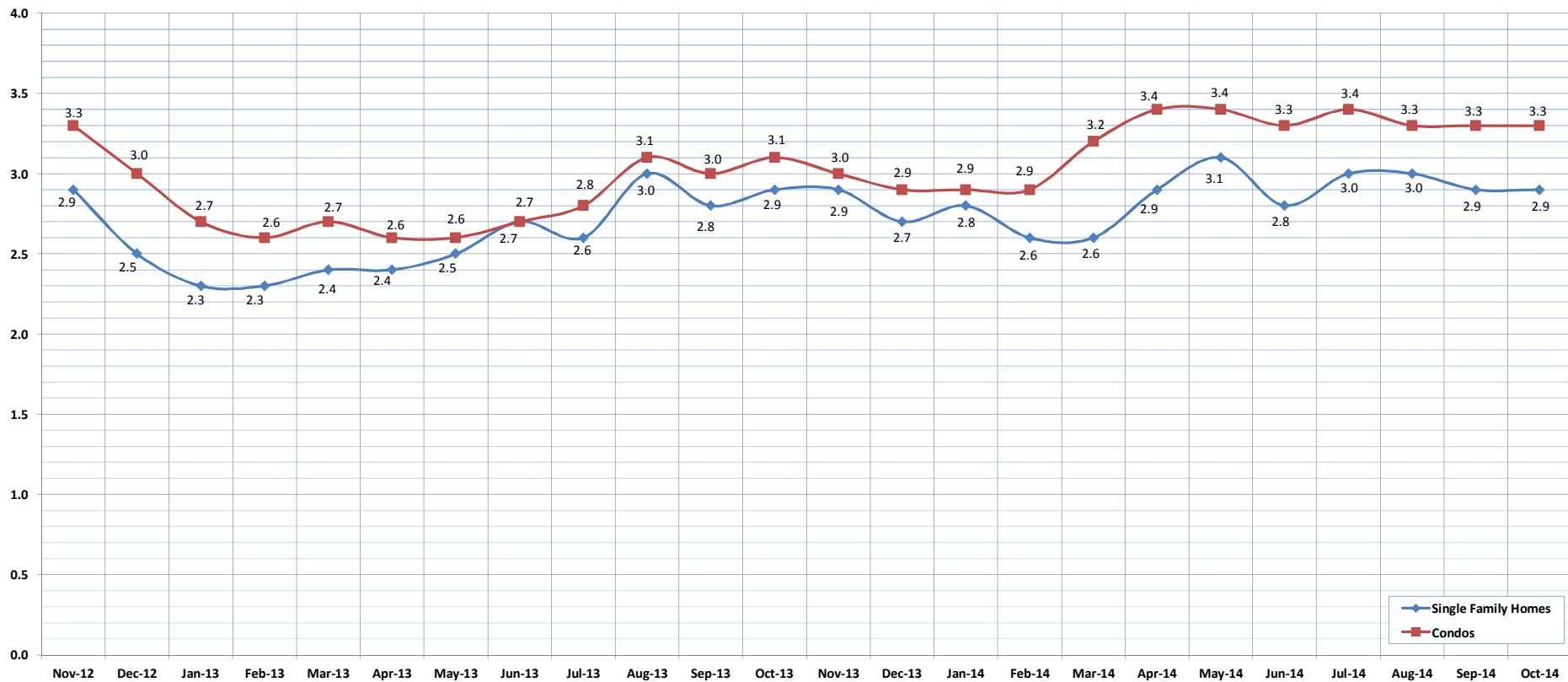


Months of Inventory

October-14

OAHU, HAWAII

(Compares the number of active listings available to the average monthly pending sales.)



	Nov-12	Dec-12	Jan-13	Feb-13	Mar-13	Apr-13	May-13	Jun-13	Jul-13	Aug-13	Sep-13	Oct-13	Nov-13	Dec-13	Jan-14	Feb-14	Mar-14	Apr-14	May-14	Jun-14	Jul-14	Aug-14	Sep-14	Oct-14
Month of Inventory : SFH	2.9	2.5	2.3	2.3	2.4	2.4	2.5	2.7	2.6	3.0	2.8	2.9	2.9	2.7	2.8	2.6	2.6	2.9	3.1	2.8	3.0	3.0	2.9	2.9
Months of Inventory: Condos	3.3	3.0	2.7	2.6	2.7	2.6	2.6	2.7	2.8	3.1	3.0	3.1	3.0	2.9	2.9	2.9	3.2	3.4	3.4	3.3	3.4	3.3	3.3	3.3

SOURCE: Honolulu Board of REALTORS®, compiled from MLS data.

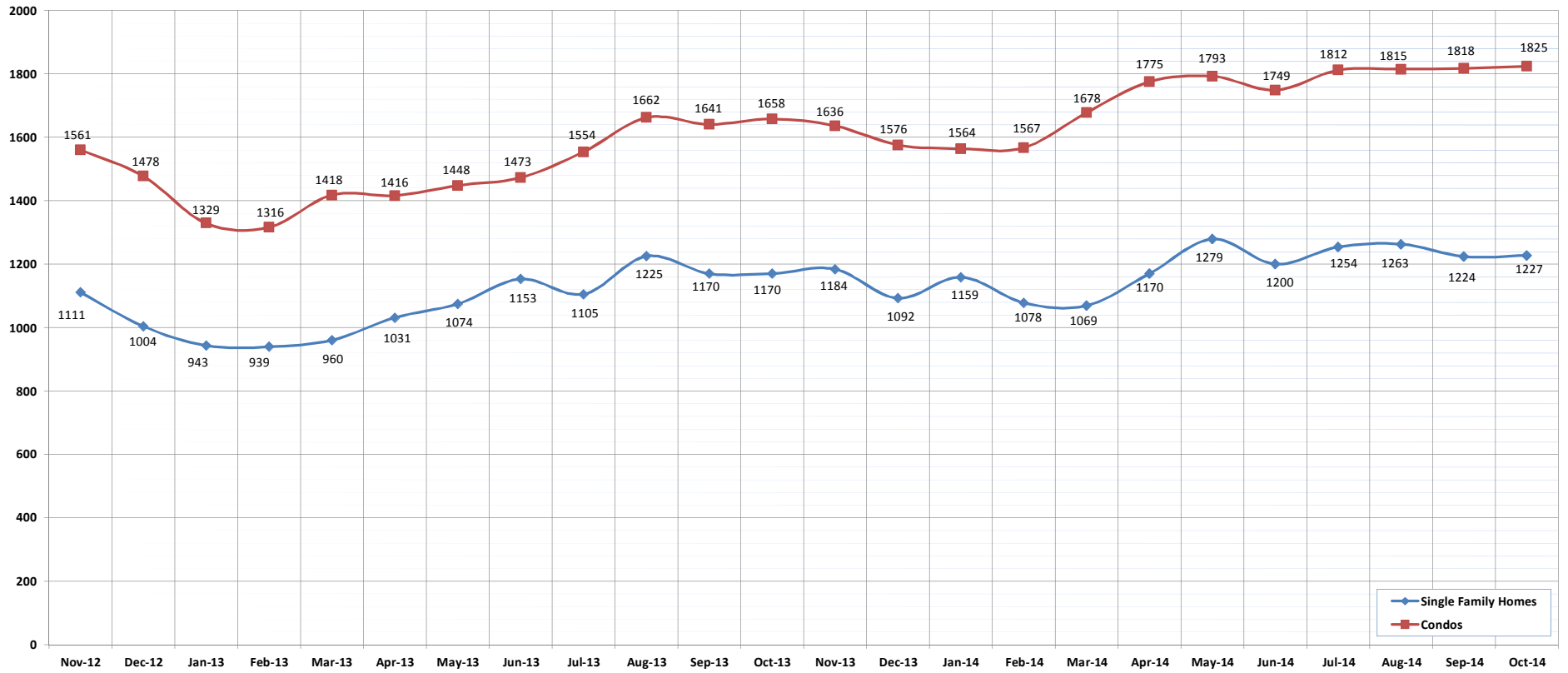


Active Listings

October-14

OAHU, HAWAII

(The number of properties available for purchase during a given month.)



	Nov-12	Dec-12	Jan-13	Feb-13	Mar-13	Apr-13	May-13	Jun-13	Jul-13	Aug-13	Sep-13	Oct-13	Nov-13	Dec-13	Jan-14	Feb-14	Mar-14	Apr-14	May-14	Jun-14	Jul-14	Aug-14	Sep-14	Oct-14
Active Listings: Single Family Homes	1111	1004	943	939	960	1031	1074	1153	1105	1225	1170	1170	1184	1092	1159	1078	1069	1170	1279	1200	1254	1263	1224	1227
Active Listings: Condos	1561	1478	1329	1316	1418	1416	1448	1473	1554	1662	1641	1658	1636	1576	1564	1567	1678	1775	1793	1749	1812	1815	1818	1825
Active Listings: Total	2672	2482	2272	2255	2378	2447	2522	2626	2659	2887	2811	2828	2820	2668	2723	2645	2747	2945	3072	2949	3066	3078	3042	3052

SOURCE: Honolulu Board of REALTORS®, compiled from MLS data.

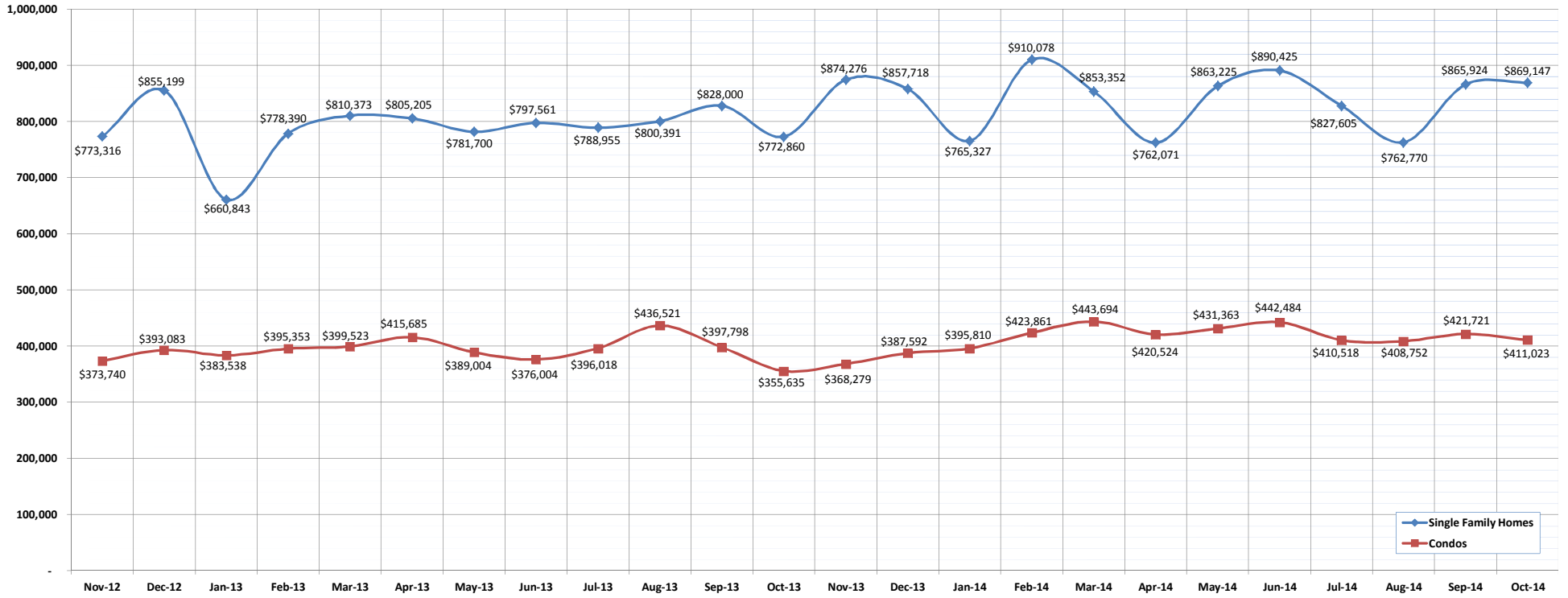


Average Sales Price

October-14

OAHU, HAWAII

(The average sales price for all closed sales in a given month.)



	Nov-12	Dec-12	Jan-13	Feb-13	Mar-13	Apr-13	May-13	Jun-13	Jul-13	Aug-13	Sep-13	Oct-13	Nov-13	Dec-13	Jan-14	Feb-14	Mar-14	Apr-14	May-14	Jun-14	Jul-14	Aug-14	Sep-14	Oct-14
Average Sales Price: SFH	773,316	855,199	660,843	778,390	810,373	805,205	781,700	797,561	788,955	800,391	828,000	772,860	874,276	857,718	765,327	910,078	853,352	762,071	863,225	890,425	827,605	762,770	865,924	869,147
Average Sales Price: Condos	373,740	393,083	383,538	395,353	399,523	415,685	389,004	376,004	396,018	436,521	397,798	355,635	368,279	387,592	395,810	423,861	443,694	420,524	431,363	442,484	410,518	408,752	421,721	411,023

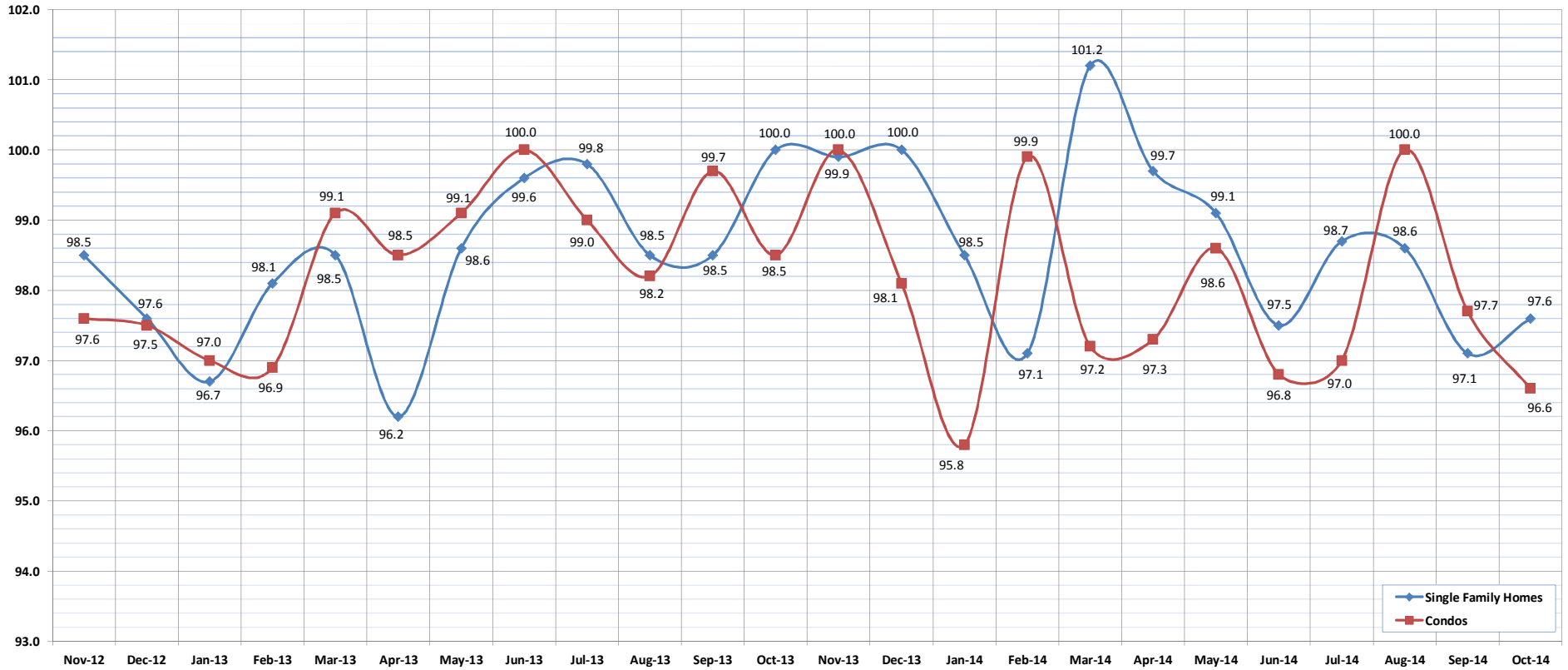
SOURCE: Honolulu Board of REALTORS® , compiled from MLS data.

Percent of Original List Price Received

October-14

OAHU, HAWAII

(The percentage found when dividing a property's sales price by the original list price.)



	Nov-12	Dec-12	Jan-13	Feb-13	Mar-13	Apr-13	May-13	Jun-13	Jul-13	Aug-13	Sep-13	Oct-13	Nov-13	Dec-13	Jan-14	Feb-14	Mar-14	Apr-14	May-14	Jun-14	Jul-14	Aug-14	Sep-14	Oct-14
Percent of Original List Price: SFH	98.5	97.6	96.7	98.1	98.5	96.2	98.6	99.6	99.8	98.5	98.5	100.0	99.9	100.0	98.5	97.1	101.2	99.7	99.1	97.5	98.7	98.6	97.1	97.6
Percent of Original List Price: Condos	97.6	97.5	97.0	96.9	99.1	98.5	99.1	100.0	99.0	98.2	99.7	98.5	100.0	98.1	95.8	99.9	97.2	97.3	98.6	96.8	97.0	100.0	97.7	96.6

SOURCE: Honolulu Board of REALTORS®, compiled from MLS data.

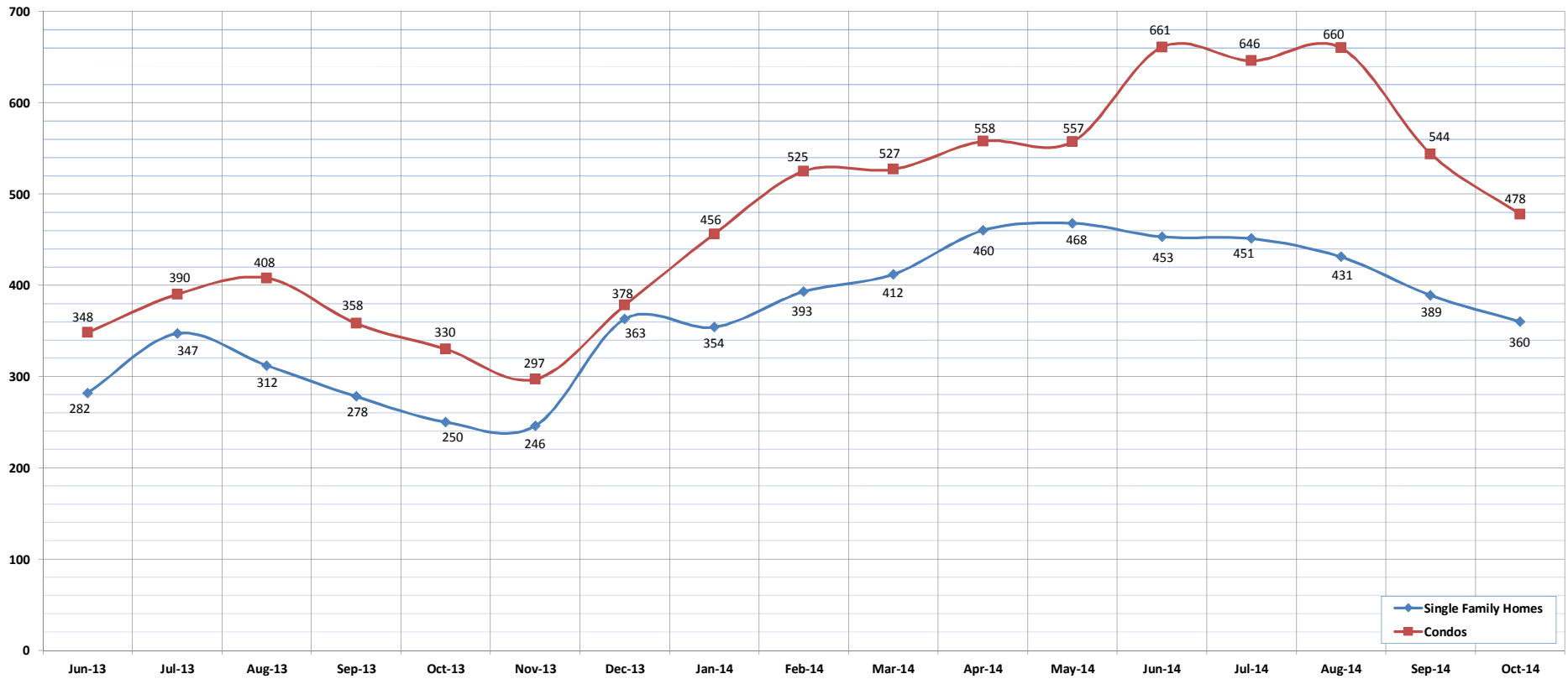


Active Continue to Show

October-14

OAHU, HAWAII

(A count of the properties that are in ACS during the current month.)



	Jun-13	Jul-13	Aug-13	Sep-13	Oct-13	Nov-13	Dec-13	Jan-14	Feb-14	Mar-14	Apr-14	May-14	Jun-14	Jul-14	Aug-14	Sep-14	Oct-14
ACS: Single Family Homes	282	347	312	278	250	246	363	354	393	412	460	468	453	451	431	389	360
ACS: Condos	348	390	408	358	330	297	378	456	525	527	558	557	661	646	660	544	478

*HBR began monthly tracking of ACS counts starting June 2013.

SOURCE: Honolulu Board of REALTORS®, compiled from MLS data.



Housing Supply Overview

October 2014

Single Family Homes	Pending Sales			Days on Market			Percentage of Original Price Received			Inventory of Homes for Sale			Months Supply of Inventory		
	Oct-14	Oct-13	%	Oct-14	Oct-13	%	Oct-14	Oct-13	%	Oct-14	Oct-13	%	Oct-14	Oct-13	%
\$350,000 and Below	176	217	-18.9%	26	35	-25.7%	97.4%	93.4%	4.3%	41	75	-45.3%	2.4	3.7	-35.1%
\$350,001 - \$475,000	404	533	-24.2%	23	23	0.0%	98.5%	97.6%	0.9%	80	127	-37.0%	2.1	2.6	-19.2%
\$475,001 - \$550,000	410	498	-17.7%	21	24	-12.5%	98.6%	98.6%	0.0%	98	114	-14.0%	2.6	2.9	-10.3%
\$550,001 - \$650,000	636	648	-1.9%	22	23	-4.3%	98.4%	98.3%	0.1%	174	154	13.0%	3.3	3.2	3.1%
\$650,001 - \$800,000	686	681	0.7%	19	24	-20.8%	98.3%	98.2%	0.1%	222	192	15.6%	3.8	3.6	5.6%
\$800,001 - \$1.1M	609	522	16.7%	20	22	-9.1%	98.5%	97.9%	0.6%	197	162	21.6%	4.1	4.1	0.0%
\$1.1M - \$1.9M	363	343	5.8%	28	33	-15.2%	96.1%	94.9%	1.3%	201	178	12.9%	6.5	7.3	-11.0%
\$1.9M and Above	154	127	21.3%	49	57	-14.0%	92.3%	92.9%	-0.6%	214	168	27.4%	18.5	16.2	14.2%
All Single Family Homes	3438	3569	-3.7%	21	24	-12.5%	98.8%	97.9%	0.9%	1227	1170	4.9%	4.2	4.1	2.4%

Condos	Pending Sales			Days on Market			Percentage of Original Price Received			Inventory of Homes for Sale			Months Supply of Inventory		
	Oct-14	Oct-13	%	Oct-14	Oct-13	%	Oct-14	Oct-13	%	Oct-14	Oct-13	%	Oct-14	Oct-13	%
\$150,000 and below	470	468	0.4%	39	42	-7.1%	91.6%	91.8%	-0.2%	152	166	-8.4%	4.1	4.1	0.0%
\$150,001 - \$200,000	429	432	-0.7%	31	32	-3.1%	94.7%	96.1%	-1.5%	166	153	8.5%	4.6	4.3	7.0%
\$200,001 - \$250,000	598	611	-2.1%	26	24	8.3%	96.9%	97.2%	-0.3%	153	169	-9.5%	3.2	3.2	0.0%
\$250,001 - \$300,000	706	612	15.4%	25	24	4.2%	98.3%	97.9%	0.4%	194	201	-3.5%	3.5	4.0	-12.5%
\$300,001 - \$375,000	907	895	1.3%	23	24	-4.2%	97.9%	97.9%	0.0%	263	240	9.6%	3.5	3.3	6.1%
\$375,001 - \$475,000	931	823	13.1%	19	22	-13.6%	98.4%	97.9%	0.5%	250	220	13.6%	3.5	3.4	2.9%
\$475,001 - \$700,000	829	725	14.3%	20	29	-31.0%	98.2%	96.9%	1.3%	296	250	18.4%	4.6	4.6	0.0%
\$700,001 and above	500	405	23.5%	38	37	2.7%	95.1%	96.5%	-1.5%	351	259	35.5%	9.6	8.6	11.6%
All Condos	5370	4971	8.0%	24	26	-7.7%	97.9%	97.7%	0.2%	1825	1658	10.1%	4.3	4.1	4.9%

SOURCE: Honolulu Board of REALTORS®, compiled from MLS data.

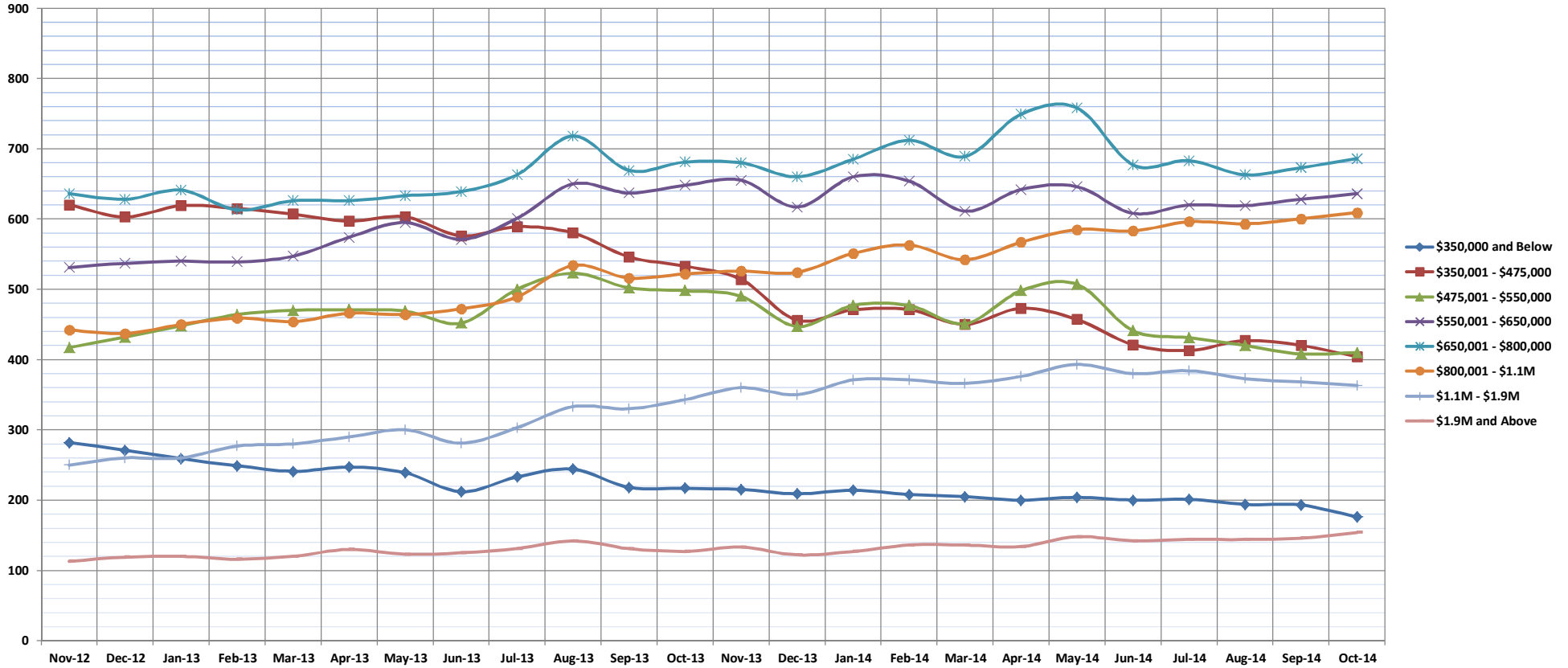


Pending Sales

Oct-14

Single Family Homes: Monthly, by Price Range

(A count of properties that have offers accepted on them in a given month. Based on a 12 month rolling total.)



	Nov-12	Dec-12	Jan-13	Feb-13	Mar-13	Apr-13	May-13	Jun-13	Jul-13	Aug-13	Sep-13	Oct-13	Nov-13	Dec-13	Jan-14	Feb-14	Mar-14	Apr-14	May-14	Jun-14	Jul-14	Aug-14	Sep-14	Oct-14
\$350,000 and Below	282	271	259	249	241	247	239	212	233	244	218	217	215	209	214	208	205	200	204	200	201	194	193	176
\$350,001 - \$475,000	620	603	619	615	607	597	603	576	589	580	546	533	514	456	471	471	450	473	457	421	413	427	420	404
\$475,001 - \$550,000	417	432	448	464	470	471	469	452	500	523	502	498	490	447	477	477	451	498	507	441	431	420	408	410
\$550,001 - \$650,000	531	537	540	539	547	574	595	571	601	650	637	648	655	617	660	654	611	642	646	608	620	619	628	636
\$650,001 - \$800,000	636	628	641	613	626	626	633	639	663	718	669	681	680	660	685	712	689	749	758	677	683	663	673	686
\$800,001 - \$1.1M	442	437	450	459	454	466	464	472	489	534	516	522	526	524	551	563	542	567	585	583	596	593	600	609
\$1.1M - \$1.9M	250	260	260	277	280	290	300	281	303	333	330	343	360	350	371	371	366	376	393	380	384	373	368	363
\$1.9M and Above	113	119	120	116	120	130	123	125	131	142	131	127	133	122	127	136	136	134	148	142	144	144	146	154
All Single Family Homes	3291	3287	3337	3332	3345	3401	3426	3328	3509	3724	3549	3569	3573	3385	3556	3592	3450	3639	3698	3452	3472	3433	3436	3438

SOURCE: Honolulu Board of REALTORS®, compiled from MLS data.

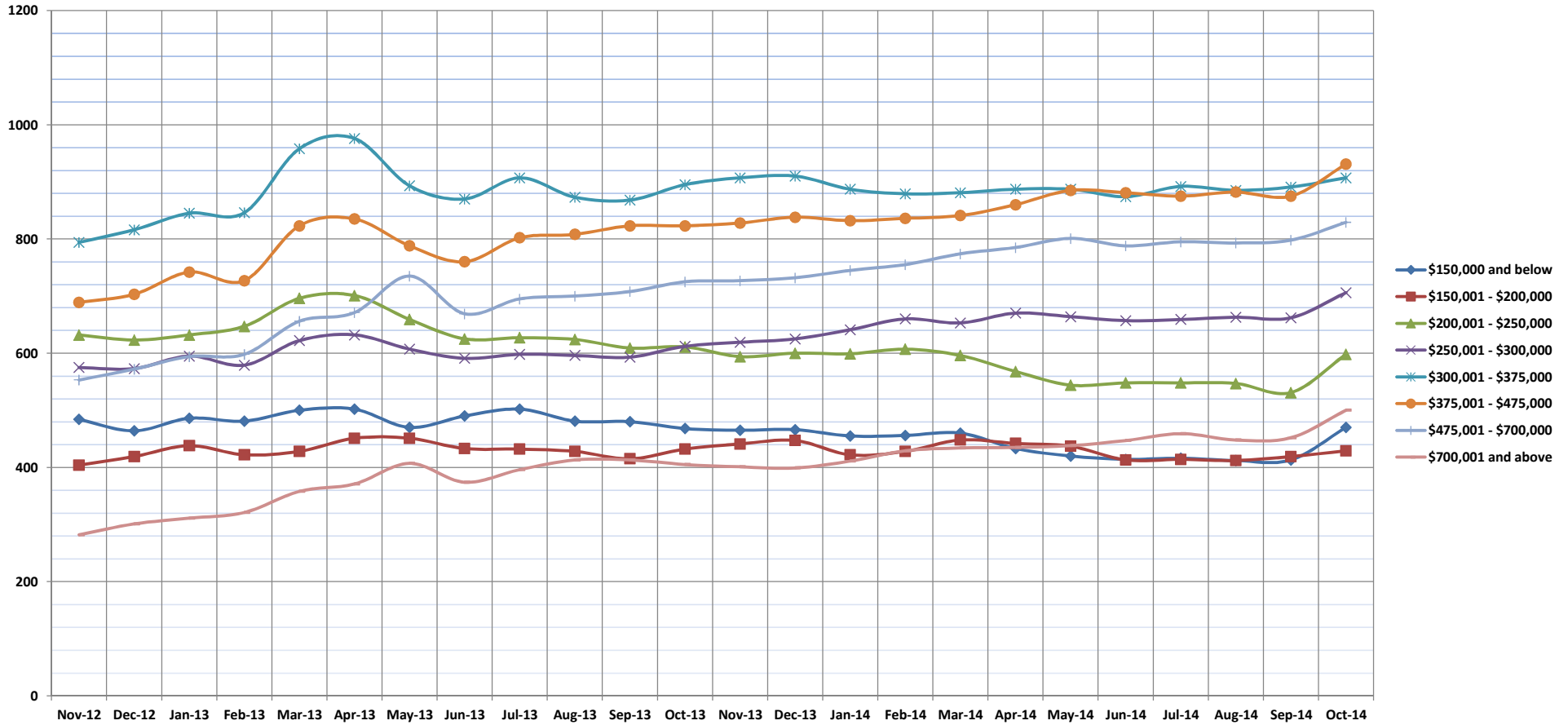


Pending Sales

Oct-14

Condos: Monthly, by Price Range

(A count of properties that have offers accepted on them in a given month. Based on a 12 month rolling total.)



	Nov-12	Dec-12	Jan-13	Feb-13	Mar-13	Apr-13	May-13	Jun-13	Jul-13	Aug-13	Sep-13	Oct-13	Nov-13	Dec-13	Jan-14	Feb-14	Mar-14	Apr-14	May-14	Jun-14	Jul-14	Aug-14	Sep-14	Oct-14
\$150,000 and below	484	464	486	481	500	502	470	490	502	481	480	468	465	466	455	456	460	433	420	414	416	412	413	470
\$150,001 - \$200,000	404	419	438	422	428	451	451	433	432	428	415	432	441	447	422	428	448	442	437	413	414	412	419	429
\$200,001 - \$250,000	632	623	632	647	696	701	659	625	627	624	609	611	594	600	599	607	596	568	544	548	548	547	531	598
\$250,001 - \$300,000	575	573	595	579	622	632	607	591	598	596	593	612	619	625	641	660	653	670	664	657	659	663	662	706
\$300,001 - \$375,000	794	816	845	846	958	976	893	870	907	873	868	895	907	910	887	879	881	887	887	874	892	885	891	907
\$375,001 - \$475,000	689	703	742	727	823	835	788	760	802	808	823	823	828	838	832	836	841	860	885	881	875	882	875	931
\$475,001 - \$700,000	553	572	594	598	656	671	735	669	695	700	708	725	727	732	745	755	774	785	801	788	795	793	798	829
\$700,001 and above	282	301	311	321	358	371	407	374	396	413	413	405	401	399	411	429	434	435	438	447	459	448	452	500
All Condos	4413	4471	4643	4621	5041	5139	5010	4812	4959	4923	4909	4971	4982	5017	4992	5050	5087	5080	5076	5022	5058	5042	5041	5370

SOURCE: Honolulu Board of REALTORS®, compiled from MLS data.

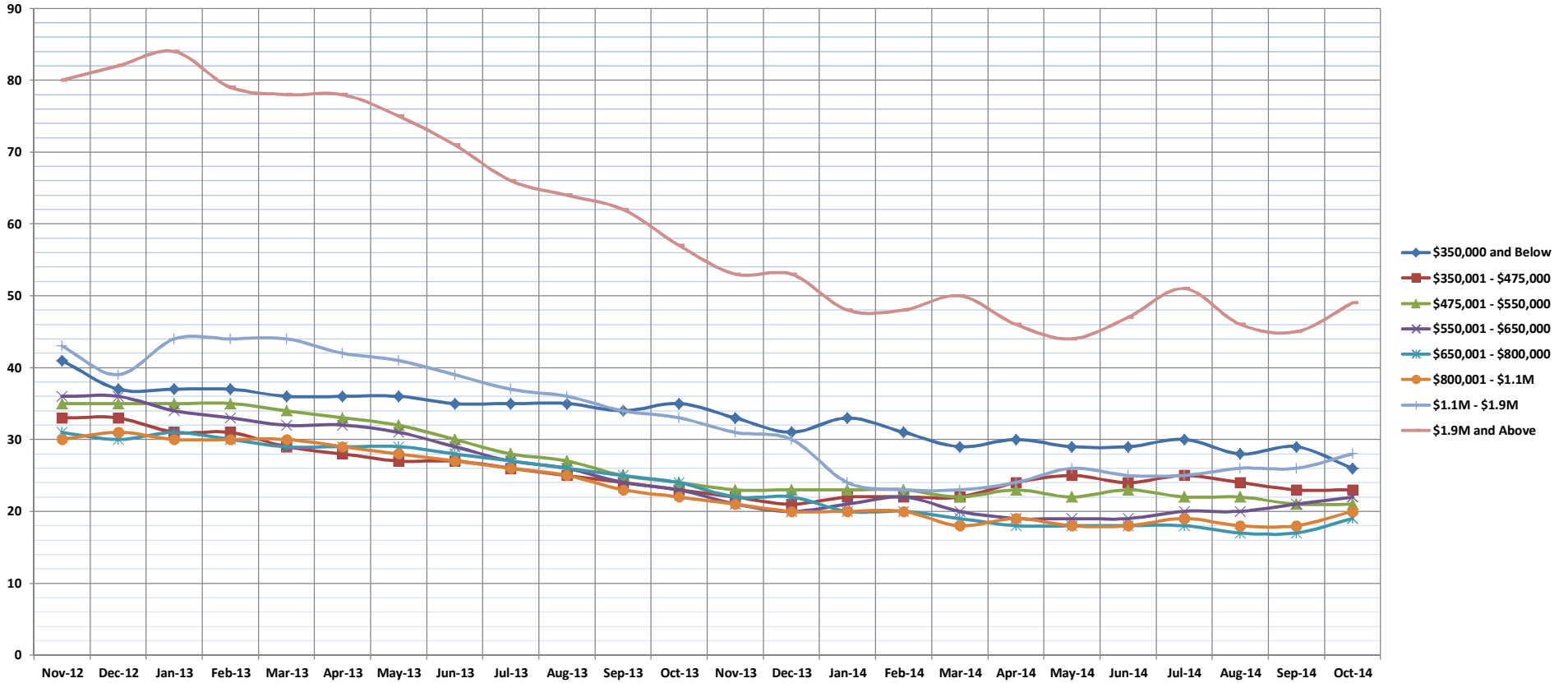


Days on Market Until Sale

Oct-14

Single Family Homes: Monthly, by Price Range

(The median number of days between when a property is first listed and when an offer is accepted. Based on a 12 month rolling median.)



	Nov-12	Dec-12	Jan-13	Feb-13	Mar-13	Apr-13	May-13	Jun-13	Jul-13	Aug-13	Sep-13	Oct-13	Nov-13	Dec-13	Jan-14	Feb-14	Mar-14	Apr-14	May-14	Jun-14	Jul-14	Aug-14	Sep-14	Oct-14
\$350,000 and Below	41	37	37	37	36	36	36	35	35	35	34	35	33	31	33	31	29	30	29	29	30	28	29	26
\$350,001 - \$475,000	33	33	31	31	29	28	27	27	26	25	24	23	22	21	22	22	22	22	24	25	24	25	24	23
\$475,001 - \$550,000	35	35	35	35	34	33	32	30	28	27	25	24	23	23	23	23	22	23	22	23	22	23	22	21
\$550,001 - \$650,000	36	36	34	33	32	32	31	29	27	26	24	23	21	20	21	22	20	19	19	19	20	20	21	22
\$650,001 - \$800,000	31	30	31	30	29	29	29	28	27	26	25	24	22	22	20	20	19	18	18	18	18	17	17	19
\$800,001 - \$1.1M	30	31	30	30	30	29	28	27	26	25	23	22	21	20	20	20	18	19	18	18	19	18	18	20
\$1.1M - \$1.9M	43	39	44	44	44	42	41	39	37	36	34	33	31	30	24	23	23	24	26	25	25	26	26	28
\$1.9M and Above	80	82	84	79	78	78	75	71	66	64	62	57	53	53	48	48	50	46	44	47	51	46	45	49
All Single Family Homes	34	34	33	33	32	31	30	29	28	26	25	24	23	22	22	22	21	21	20	20	20	20	20	21

SOURCE: Honolulu Board of REALTORS®, compiled from MLS data.

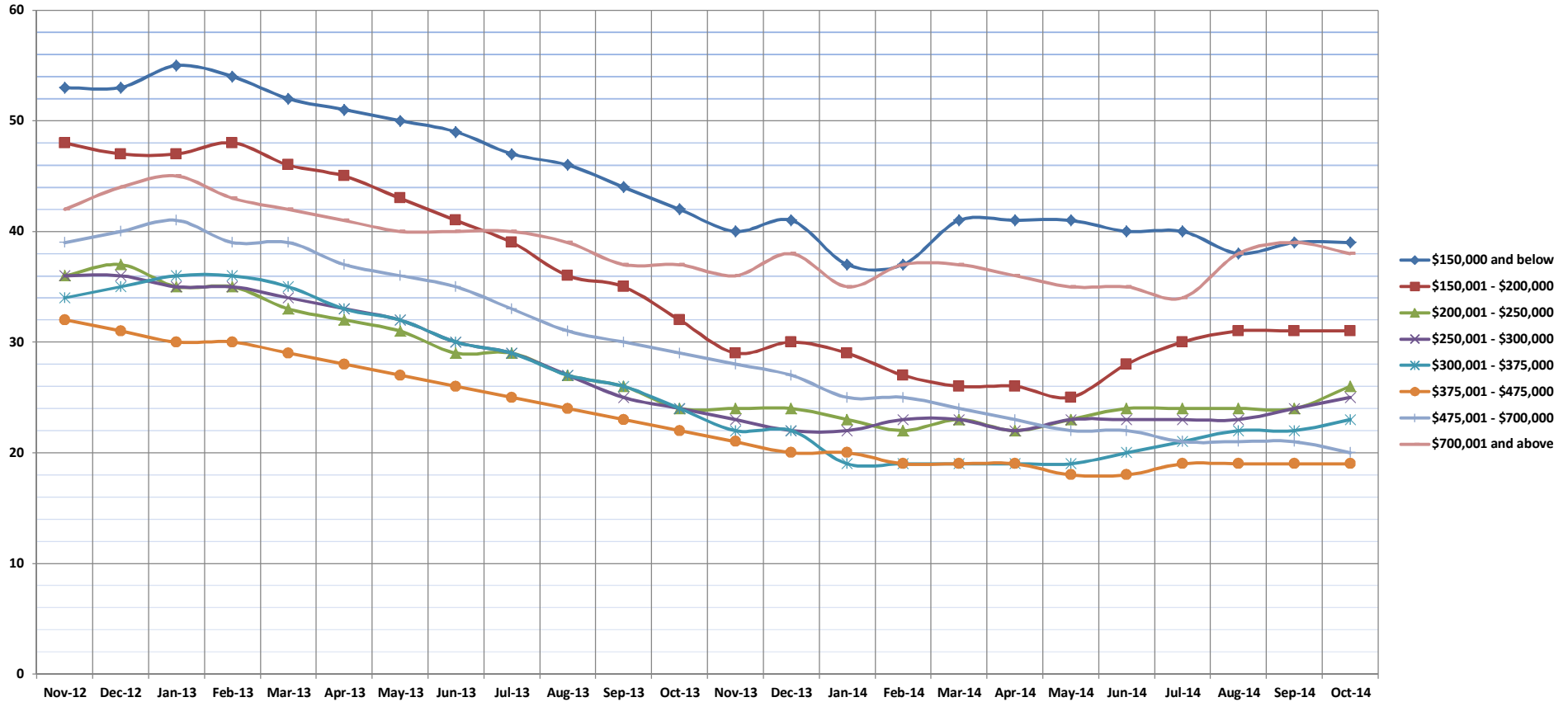


Days on Market Until Sale

Oct-14

Condos: Monthly, by Price Range

(The median number of days between when a property is first listed and when an offer is accepted. Based on a 12 month rolling median.)



	Nov-12	Dec-12	Jan-13	Feb-13	Mar-13	Apr-13	May-13	Jun-13	Jul-13	Aug-13	Sep-13	Oct-13	Nov-13	Dec-13	Jan-14	Feb-14	Mar-14	Apr-14	May-14	Jun-14	Jul-14	Aug-14	Sep-14	Oct-14
\$150,000 and below	53	53	55	54	52	51	50	49	47	46	44	42	40	41	37	37	41	41	41	40	40	38	39	39
\$150,001 - \$200,000	48	47	47	48	46	45	43	41	39	36	35	32	29	30	29	27	26	26	25	28	30	31	31	31
\$200,001 - \$250,000	36	37	35	35	33	32	31	29	29	27	26	24	24	24	23	22	23	22	23	24	24	24	24	26
\$250,001 - \$300,000	36	36	35	35	34	33	32	30	29	27	25	24	23	22	22	23	23	22	23	23	23	23	24	25
\$300,001 - \$375,000	34	35	36	36	35	33	32	30	29	27	26	24	22	22	19	19	19	19	19	20	21	22	22	23
\$375,001 - \$475,000	32	31	30	30	29	28	27	26	25	24	23	22	21	20	20	19	19	19	18	18	19	19	19	19
\$475,001 - \$700,000	39	40	41	39	39	37	36	35	33	31	30	29	28	27	25	25	24	23	22	22	21	21	21	20
\$700,001 and above	42	44	45	43	42	41	40	40	40	39	37	37	36	38	35	37	37	36	35	35	34	38	39	38
All Condos	38	39	38	37	36	35	34	32	31	29	27	26	25	24	23	24	23	23	23	23	23	24	24	24

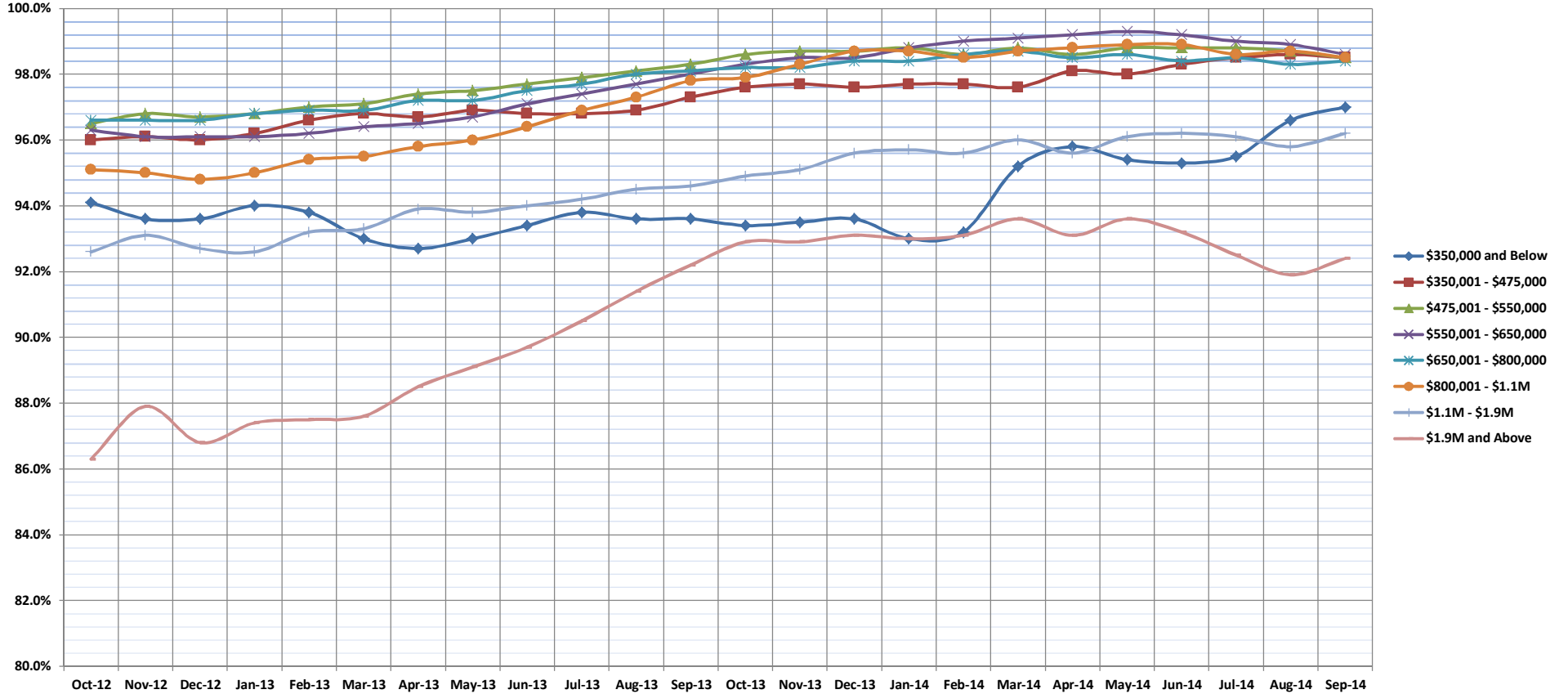
SOURCE: Honolulu Board of REALTORS®, compiled from MLS data.

Percentage of Original Price Received

Oct-14

Single Family Homes: Monthly, by Price Range

(The average percentage found when dividing a property's sales price by the original list price. Based on a rolling 12 month average.)



	Oct-12	Nov-12	Dec-12	Jan-13	Feb-13	Mar-13	Apr-13	May-13	Jun-13	Jul-13	Aug-13	Sep-13	Oct-13	Nov-13	Dec-13	Jan-14	Feb-14	Mar-14	Apr-14	May-14	Jun-14	Jul-14	Aug-14	Sep-14	
\$350,000 and Below	94.1%	93.6%	93.6%	94.0%	93.8%	93.0%	92.7%	93.0%	93.4%	93.8%	93.6%	93.6%	93.4%	93.5%	93.6%	93.0%	93.2%	95.2%	95.8%	95.4%	95.3%	95.5%	96.6%	97.0%	
\$350,001 - \$475,000	96.0%	96.1%	96.0%	96.2%	96.6%	96.8%	96.7%	96.9%	96.8%	96.8%	96.9%	97.3%	97.6%	97.7%	97.6%	97.7%	97.7%	97.6%	98.1%	98.0%	98.3%	98.5%	98.6%	98.5%	
\$475,001 - \$550,000	96.5%	96.8%	96.7%	96.8%	97.0%	97.1%	97.4%	97.5%	97.7%	97.9%	98.1%	98.3%	98.6%	98.7%	98.7%	98.8%	98.6%	98.8%	98.6%	98.8%	98.6%	98.8%	98.8%	98.7%	98.5%
\$550,001 - \$650,000	96.3%	96.1%	96.1%	96.1%	96.2%	96.4%	96.5%	96.7%	97.1%	97.4%	97.7%	98.0%	98.3%	98.5%	98.5%	98.8%	99.0%	99.1%	99.2%	99.3%	99.2%	99.0%	98.9%	98.6%	
\$650,001 - \$800,000	96.6%	96.6%	96.6%	96.8%	96.9%	96.9%	97.2%	97.2%	97.5%	97.7%	98.0%	98.1%	98.2%	98.2%	98.4%	98.4%	98.6%	98.7%	98.5%	98.6%	98.4%	98.5%	98.3%	98.4%	
\$800,001 - \$1.1M	95.1%	95.0%	94.8%	95.0%	95.4%	95.5%	95.8%	96.0%	96.4%	96.9%	97.3%	97.8%	97.9%	98.3%	98.7%	98.7%	98.5%	98.7%	98.8%	98.8%	98.9%	98.9%	98.6%	98.7%	98.5%
\$1.1M - \$1.9M	92.6%	93.1%	92.7%	92.6%	93.2%	93.3%	93.9%	93.8%	94.0%	94.2%	94.5%	94.6%	94.9%	95.1%	95.6%	95.7%	95.6%	96.0%	95.6%	96.1%	96.2%	96.1%	95.8%	96.2%	
\$1.9M and Above	86.3%	87.9%	86.8%	87.4%	87.5%	87.6%	88.5%	89.1%	89.7%	90.5%	91.4%	92.2%	92.9%	92.9%	93.1%	93.0%	93.1%	93.6%	93.1%	93.6%	93.2%	92.5%	91.9%	92.4%	
All Single Family Homes	95.4%	95.6%	95.5%	95.6%	95.9%	96.1%	96.1%	96.3%	96.7%	97.0%	97.3%	97.6%	97.9%	98.3%	98.5%	98.7%	98.6%	98.9%	99.2%	99.3%	99.2%	99.1%	99.1%	99.0%	

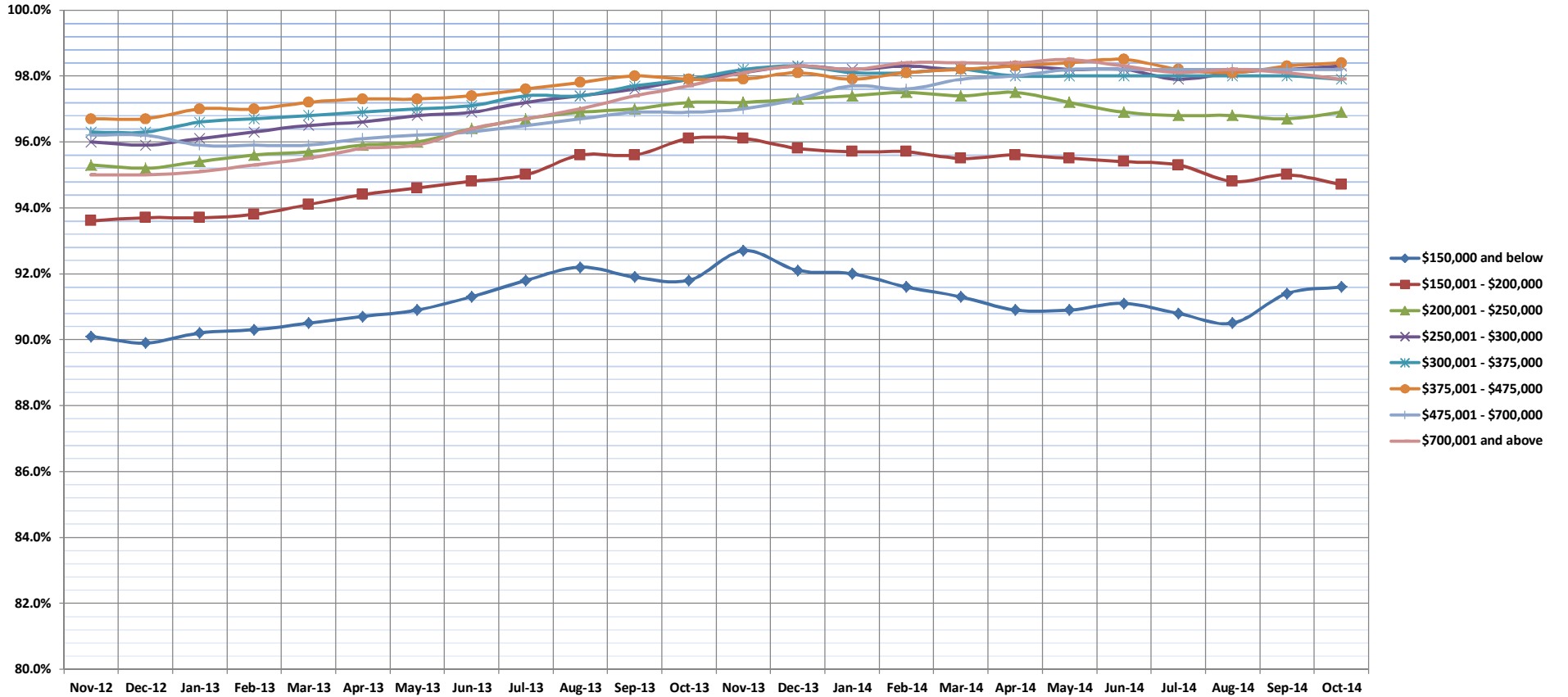
SOURCE: Honolulu Board of REALTORS®, compiled from MLS data.

Percentage of Original Price Received

Oct-14

Condos: Monthly, by Price Range

(The average percentage found when dividing a property's sales price by the original list price. Based on a rolling 12 month average.)



	Nov-12	Dec-12	Jan-13	Feb-13	Mar-13	Apr-13	May-13	Jun-13	Jul-13	Aug-13	Sep-13	Oct-13	Nov-13	Dec-13	Jan-14	Feb-14	Mar-14	Apr-14	May-14	Jun-14	Jul-14	Aug-14	Sep-14	Oct-14	
\$150,000 and below	90.1%	89.9%	90.2%	90.3%	90.5%	90.7%	90.9%	91.3%	91.8%	92.2%	91.9%	91.8%	92.7%	92.1%	92.0%	91.6%	91.3%	90.9%	90.9%	91.1%	90.8%	90.5%	91.4%	91.6%	
\$150,001 - \$200,000	93.6%	93.7%	93.7%	93.8%	94.1%	94.4%	94.6%	94.8%	95.0%	95.6%	95.6%	96.1%	96.1%	95.8%	95.7%	95.7%	95.5%	95.6%	95.5%	95.4%	95.3%	94.8%	95.0%	94.7%	
\$200,001 - \$250,000	95.3%	95.2%	95.4%	95.6%	95.7%	95.9%	96.0%	96.4%	96.7%	96.9%	97.0%	97.2%	97.2%	97.3%	97.4%	97.5%	97.4%	97.5%	97.2%	96.9%	96.8%	96.8%	96.7%	96.9%	
\$250,001 - \$300,000	96.0%	95.9%	96.1%	96.3%	96.5%	96.6%	96.8%	96.9%	97.2%	97.4%	97.6%	97.9%	98.1%	98.3%	98.2%	98.3%	98.2%	98.3%	98.2%	98.3%	98.2%	98.2%	97.9%	98.1%	98.2%
\$300,001 - \$375,000	96.3%	96.3%	96.6%	96.7%	96.8%	96.9%	97.0%	97.1%	97.4%	97.4%	97.7%	97.9%	98.2%	98.3%	98.1%	98.1%	98.2%	98.0%	98.0%	98.0%	98.0%	98.0%	98.0%	98.0%	97.9%
\$375,001 - \$475,000	96.7%	96.7%	97.0%	97.0%	97.2%	97.3%	97.3%	97.4%	97.6%	97.8%	98.0%	97.9%	97.9%	98.1%	97.9%	98.1%	98.2%	98.3%	98.2%	98.3%	98.2%	98.4%	98.5%	98.2%	98.4%
\$475,001 - \$700,000	96.2%	96.2%	95.9%	95.9%	95.9%	96.1%	96.2%	96.3%	96.5%	96.7%	96.9%	96.9%	97.0%	97.3%	97.7%	97.6%	97.9%	98.0%	98.2%	98.2%	98.2%	98.2%	98.2%	98.2%	98.2%
\$700,001 and above	94.1%	94.1%	94.3%	94.4%	94.6%	95.0%	95.2%	95.3%	95.4%	96.0%	96.4%	96.5%	96.6%	96.6%	96.8%	97.0%	97.1%	96.9%	96.6%	96.2%	96.4%	95.1%	95.0%	95.1%	
All Condos	95.0%	95.0%	95.1%	95.3%	95.5%	95.8%	95.9%	96.4%	96.7%	97.0%	97.4%	97.7%	98.1%	98.3%	98.2%	98.4%	98.4%	98.4%	98.4%	98.4%	98.5%	98.3%	98.1%	98.2%	97.9%

SOURCE: Honolulu Board of REALTORS®, compiled from MLS data.

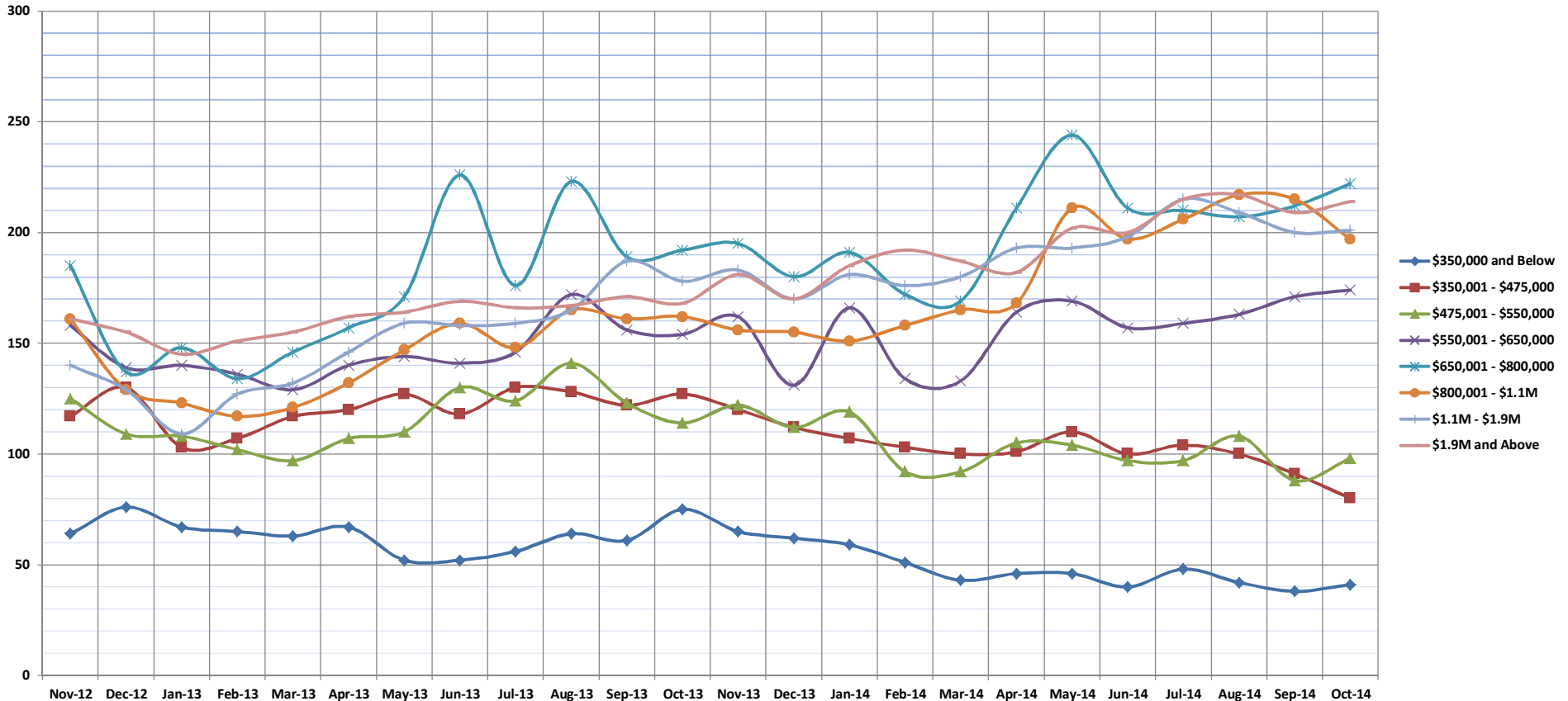


Inventory of Homes for Sale

Oct-14

Single Family Homes: Monthly, by Price Range

(The number of properties available for sale in active status at the end of a given month.)



	Nov-12	Dec-12	Jan-13	Feb-13	Mar-13	Apr-13	May-13	Jun-13	Jul-13	Aug-13	Sep-13	Oct-13	Nov-13	Dec-13	Jan-14	Feb-14	Mar-14	Apr-14	May-14	Jun-14	Jul-14	Aug-14	Sep-14	Oct-14
\$350,000 and Below	64	76	67	65	63	67	52	52	56	64	61	75	65	62	59	51	43	46	46	40	48	42	38	41
\$350,001 - \$475,000	117	130	103	107	117	120	127	118	130	128	122	127	120	112	107	103	100	101	110	100	104	100	91	80
\$475,001 - \$550,000	125	109	108	102	97	107	110	130	124	141	123	114	122	112	119	92	92	105	104	97	97	108	88	98
\$550,001 - \$650,000	158	139	140	136	129	140	144	141	146	172	156	154	162	131	166	134	133	164	169	157	159	163	171	174
\$650,001 - \$800,000	185	137	148	134	146	157	171	226	176	223	189	192	195	180	191	172	169	211	244	211	210	207	212	222
\$800,001 - \$1.1M	161	129	123	117	121	132	147	159	148	165	161	162	156	155	151	158	165	168	211	197	206	217	215	197
\$1.1M - \$1.9M	140	129	109	127	132	146	159	158	159	165	187	178	183	170	181	176	180	193	193	198	215	209	200	201
\$1.9M and Above	161	155	145	151	155	162	164	169	166	167	171	168	181	170	185	192	187	182	202	200	215	217	209	214
All Single Family Homes	1111	1004	943	939	960	1031	1074	1153	1105	1225	1170	1170	1184	1092	1159	1078	1069	1170	1279	1200	1254	1263	1224	1227

SOURCE: Honolulu Board of REALTORS®, compiled from MLS data.

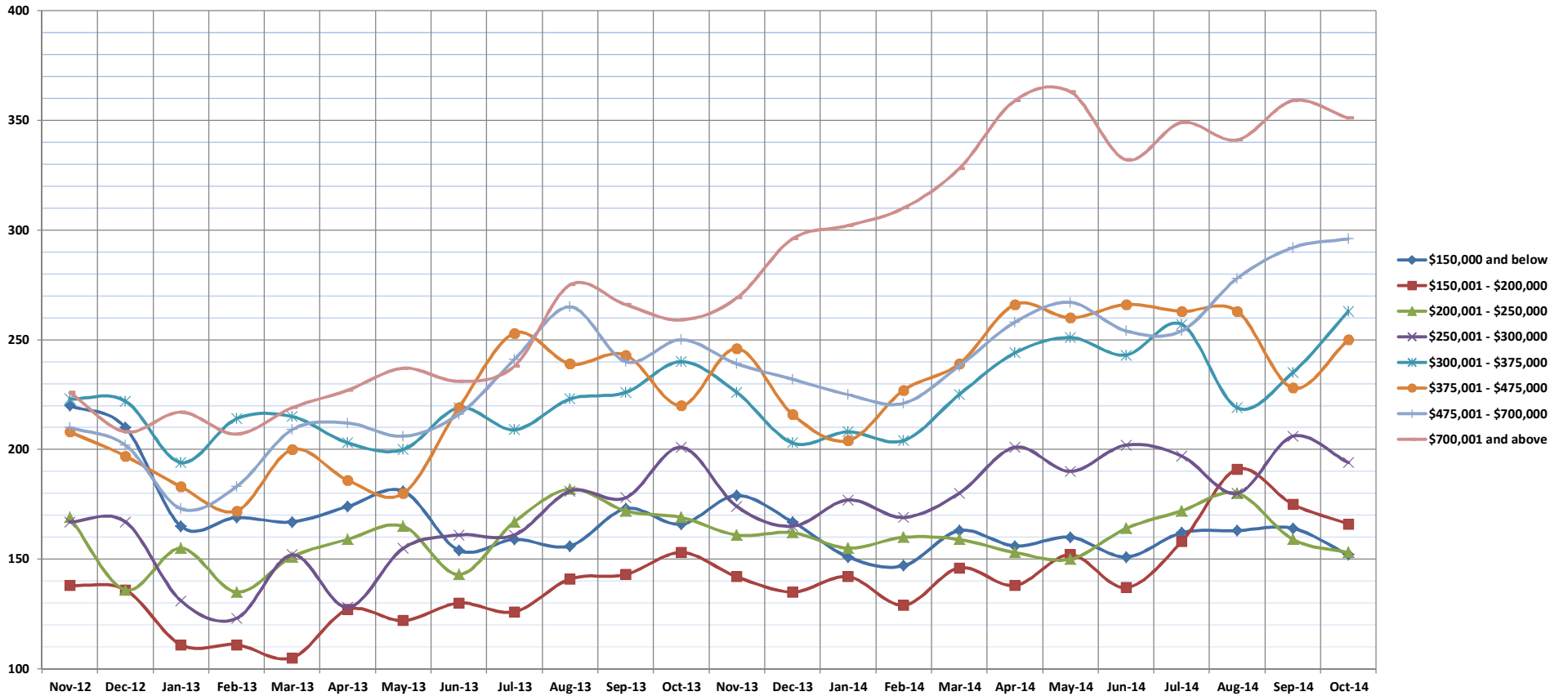


Inventory of Homes for Sale

Oct-14

Condos: Monthly, by Price Range

(The number of properties available for sale in active status at the end of a given month.)



	Nov-12	Dec-12	Jan-13	Feb-13	Mar-13	Apr-13	May-13	Jun-13	Jul-13	Aug-13	Sep-13	Oct-13	Nov-13	Dec-13	Jan-14	Feb-14	Mar-14	Apr-14	May-14	Jun-14	Jul-14	Aug-14	Sep-14	Oct-14
\$150,000 and below	220	210	165	169	167	174	181	154	159	156	173	166	179	167	151	147	163	156	160	151	162	163	164	152
\$150,001 - \$200,000	138	136	111	111	105	127	122	130	126	141	143	153	142	135	142	129	146	138	152	137	158	191	175	166
\$200,001 - \$250,000	169	136	155	135	151	159	165	143	167	182	172	169	161	162	155	160	159	153	150	164	172	180	159	153
\$250,001 - \$300,000	167	167	131	123	152	128	155	161	161	181	178	201	174	165	177	169	180	201	190	202	197	180	206	194
\$300,001 - \$375,000	223	222	194	214	215	203	200	219	209	223	226	240	226	203	208	204	225	244	251	243	257	219	235	263
\$375,001 - \$475,000	208	197	183	172	200	186	180	219	253	239	243	220	246	216	204	227	239	266	260	266	263	263	228	250
\$475,001 - \$700,000	210	202	173	183	209	212	206	216	241	265	240	250	239	232	225	221	238	258	267	254	254	278	292	296
\$700,001 and above	226	208	217	207	219	227	237	231	238	275	266	259	269	296	302	310	328	359	363	332	349	341	359	351
All Condos	1561	1478	1329	1314	1418	1416	1446	1473	1554	1662	1641	1658	1636	1576	1564	1567	1678	1775	1793	1749	1812	1815	1818	1825

SOURCE: Honolulu Board of REALTORS®, compiled from MLS data.

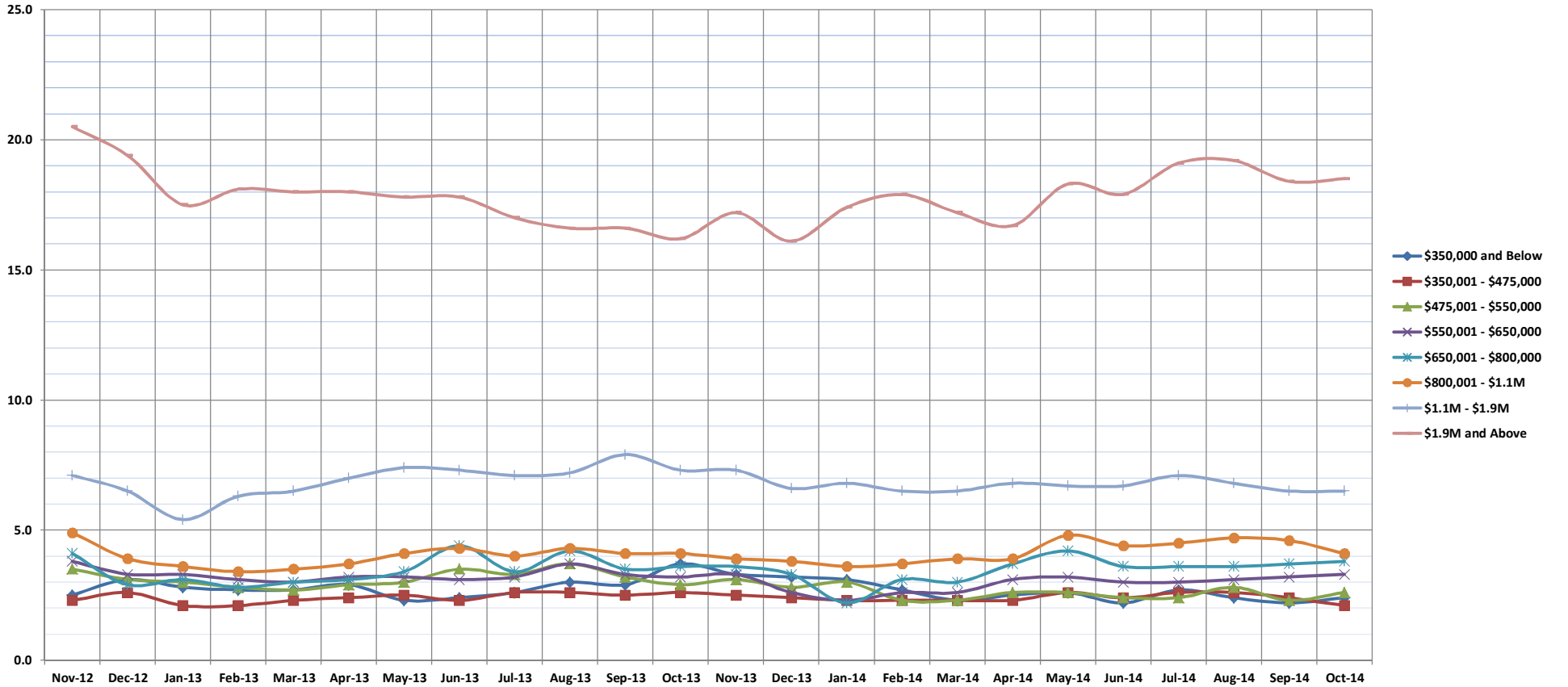


Months Supply of Inventory

Oct-14

Single Family Homes: Monthly, by Price Range

(Compares the number of active listings available to the average monthly pending sales from the last 12 months.)



	Nov-12	Dec-12	Jan-13	Feb-13	Mar-13	Apr-13	May-13	Jun-13	Jul-13	Aug-13	Sep-13	Oct-13	Nov-13	Dec-13	Jan-14	Feb-14	Mar-14	Apr-14	May-14	Jun-14	Jul-14	Aug-14	Sep-14	Oct-14
\$350,000 and Below	2.5	3.1	2.8	2.7	2.7	2.9	2.3	2.4	2.6	3.0	2.9	3.7	3.3	3.2	3.1	2.7	2.3	2.5	2.6	2.2	2.7	2.4	2.2	2.4
\$350,001 - \$475,000	2.3	2.6	2.1	2.1	2.3	2.4	2.5	2.3	2.6	2.6	2.5	2.6	2.5	2.4	2.3	2.3	2.3	2.3	2.6	2.4	2.6	2.6	2.4	2.1
\$475,001 - \$550,000	3.5	3.1	3.0	2.8	2.7	2.9	3.0	3.5	3.3	3.7	3.2	2.9	3.1	2.8	3.0	2.3	2.3	2.6	2.6	2.4	2.4	2.8	2.3	2.6
\$550,001 - \$650,000	3.8	3.3	3.3	3.1	3.0	3.2	3.2	3.1	3.2	3.7	3.3	3.2	3.3	2.6	2.3	2.6	2.6	3.1	3.2	3.0	3.0	3.1	3.2	3.3
\$650,001 - \$800,000	4.1	2.9	3.1	2.8	3.0	3.1	3.4	4.4	3.4	4.2	3.5	3.6	3.6	3.3	2.2	3.1	3.0	3.7	4.2	3.6	3.6	3.6	3.7	3.8
\$800,001 - \$1.1M	4.9	3.9	3.6	3.4	3.5	3.7	4.1	4.3	4.0	4.3	4.1	4.1	3.9	3.8	3.6	3.7	3.9	3.9	4.8	4.4	4.5	4.7	4.6	4.1
\$1.1M - \$1.9M	7.1	6.5	5.4	6.3	6.5	7.0	7.4	7.3	7.1	7.2	7.9	7.3	7.3	6.6	6.8	6.5	6.5	6.8	6.7	6.7	7.1	6.8	6.5	6.5
\$1.9M and Above	20.5	19.4	17.5	18.1	18.0	18.0	17.8	17.8	17.0	16.6	16.6	16.2	17.2	16.1	17.4	17.9	17.2	16.7	18.3	17.9	19.1	19.2	18.4	18.5
All Single Family Homes	4.1	3.9	3.6	3.6	3.6	3.8	3.9	4.2	4.0	4.4	4.1	4.1	4.1	3.8	4.0	3.7	3.7	4.0	4.3	4.0	4.2	4.3	4.2	4.2

SOURCE: Honolulu Board of REALTORS®, compiled from MLS data.

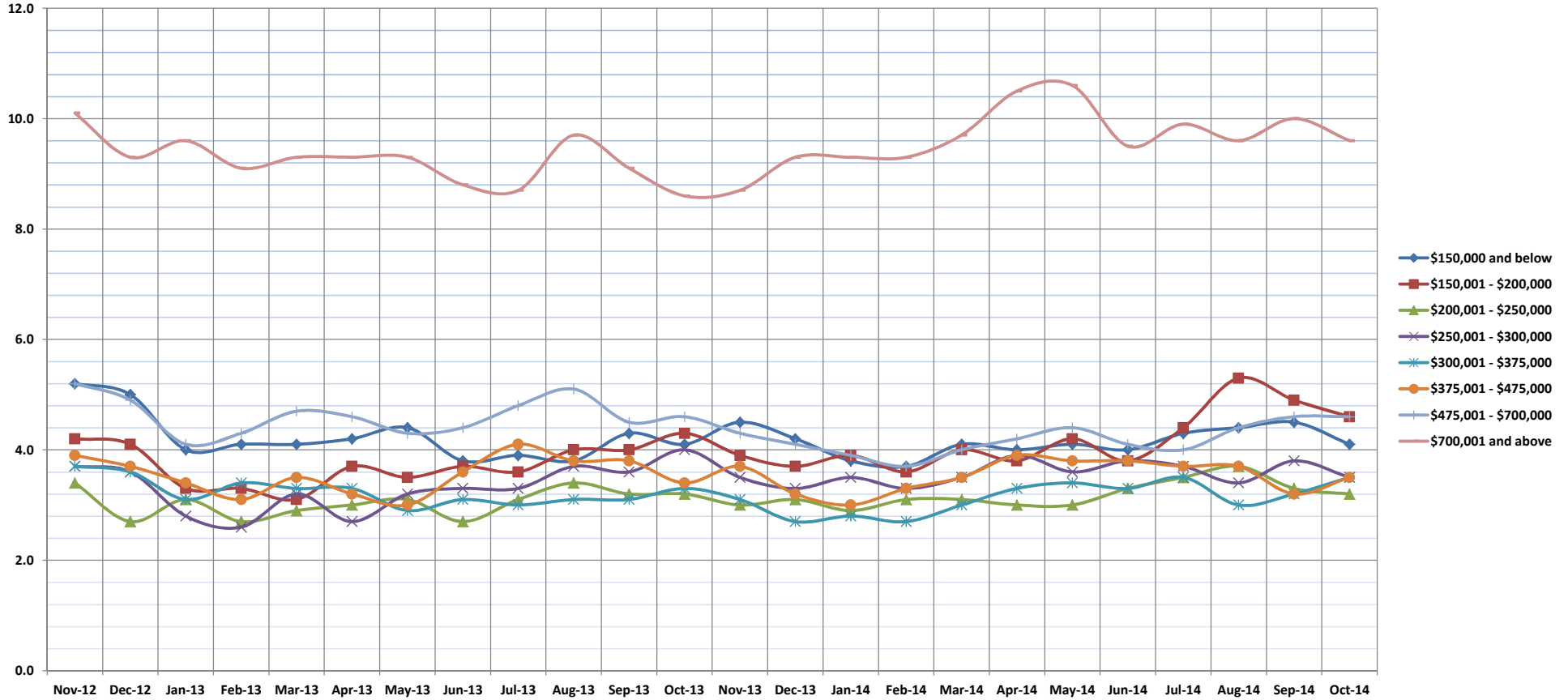


Months Supply of Inventory

Oct-14

Condos: Monthly, by Price Range

(Compares the number of active listings available to the average monthly pending sales from the last 12 months.)



	Nov-12	Dec-12	Jan-13	Feb-13	Mar-13	Apr-13	May-13	Jun-13	Jul-13	Aug-13	Sep-13	Oct-13	Nov-13	Dec-13	Jan-14	Feb-14	Mar-14	Apr-14	May-14	Jun-14	Jul-14	Aug-14	Sep-14	Oct-14	
\$150,000 and below	5.2	5.0	4.0	4.1	4.1	4.2	4.4	3.8	3.9	3.8	4.3	4.1	4.5	4.2	3.8	3.7	4.1	4.0	4.1	4.0	4.3	4.4	4.5	4.1	
\$150,001 - \$200,000	4.2	4.1	3.3	3.3	3.1	3.7	3.5	3.7	3.6	4.0	4.0	4.3	3.9	3.7	3.9	3.6	4.0	3.8	4.2	3.8	4.4	5.3	4.9	4.6	
\$200,001 - \$250,000	3.4	2.7	3.1	2.7	2.9	3.0	3.1	2.7	3.1	3.4	3.2	3.2	3.0	3.1	2.9	3.1	3.1	3.0	3.0	3.0	3.3	3.5	3.7	3.3	3.2
\$250,001 - \$300,000	3.7	3.6	2.8	2.6	3.2	2.7	3.2	3.3	3.3	3.7	3.6	4.0	3.5	3.3	3.5	3.3	3.5	3.9	3.6	3.8	3.7	3.4	3.8	3.5	
\$300,001 - \$375,000	3.7	3.6	3.1	3.4	3.3	3.3	2.9	3.1	3.0	3.1	3.1	3.3	3.1	2.7	2.8	2.7	3.0	3.3	3.4	3.3	3.5	3.0	3.2	3.5	
\$375,001 - \$475,000	3.9	3.7	3.4	3.1	3.5	3.2	3.0	3.6	4.1	3.8	3.8	3.4	3.7	3.2	3.0	3.3	3.5	3.9	3.8	3.8	3.7	3.7	3.2	3.5	
\$475,001 - \$700,000	5.2	4.9	4.1	4.3	4.7	4.6	4.3	4.4	4.8	5.1	4.5	4.6	4.3	4.1	3.9	3.7	4.0	4.2	4.4	4.1	4.0	4.4	4.6	4.6	
\$700,001 and above	10.1	9.3	9.6	9.1	9.3	9.3	9.3	8.8	8.7	9.7	9.1	8.6	8.7	9.3	9.3	9.3	9.7	10.5	10.6	9.5	9.9	9.6	10.0	9.6	
All Condos	4.5	4.2	3.8	3.7	3.9	3.8	3.8	3.8	4.0	4.2	4.1	4.1	4.0	3.8	3.8	3.8	4.0	4.3	4.3	4.2	4.3	4.3	4.3	4.3	

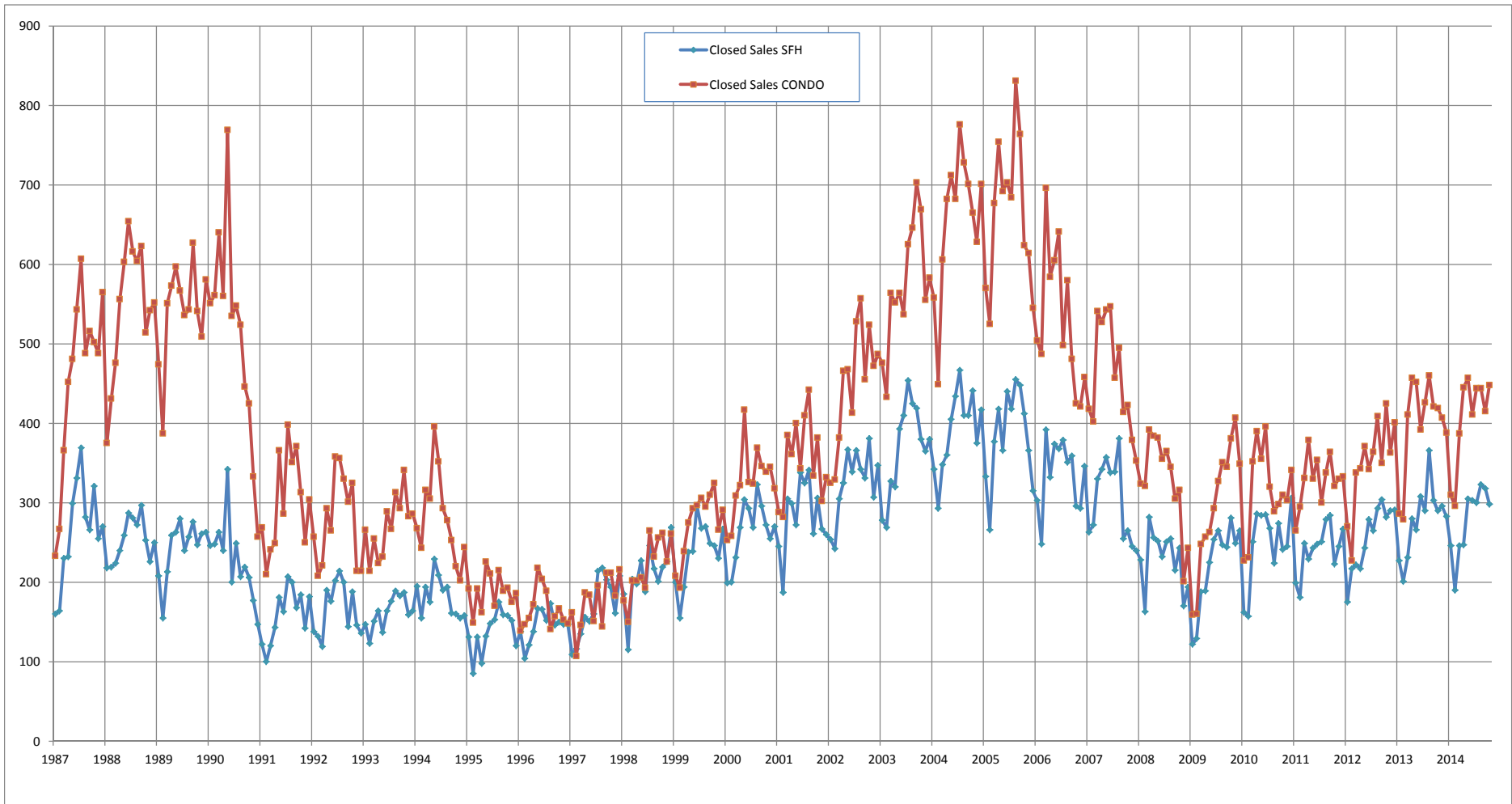
SOURCE: Honolulu Board of REALTORS®, compiled from MLS data.



Closed Sales

Single Family Homes and Condos

OAHU, HAWAII: Jan 1987 to the Present

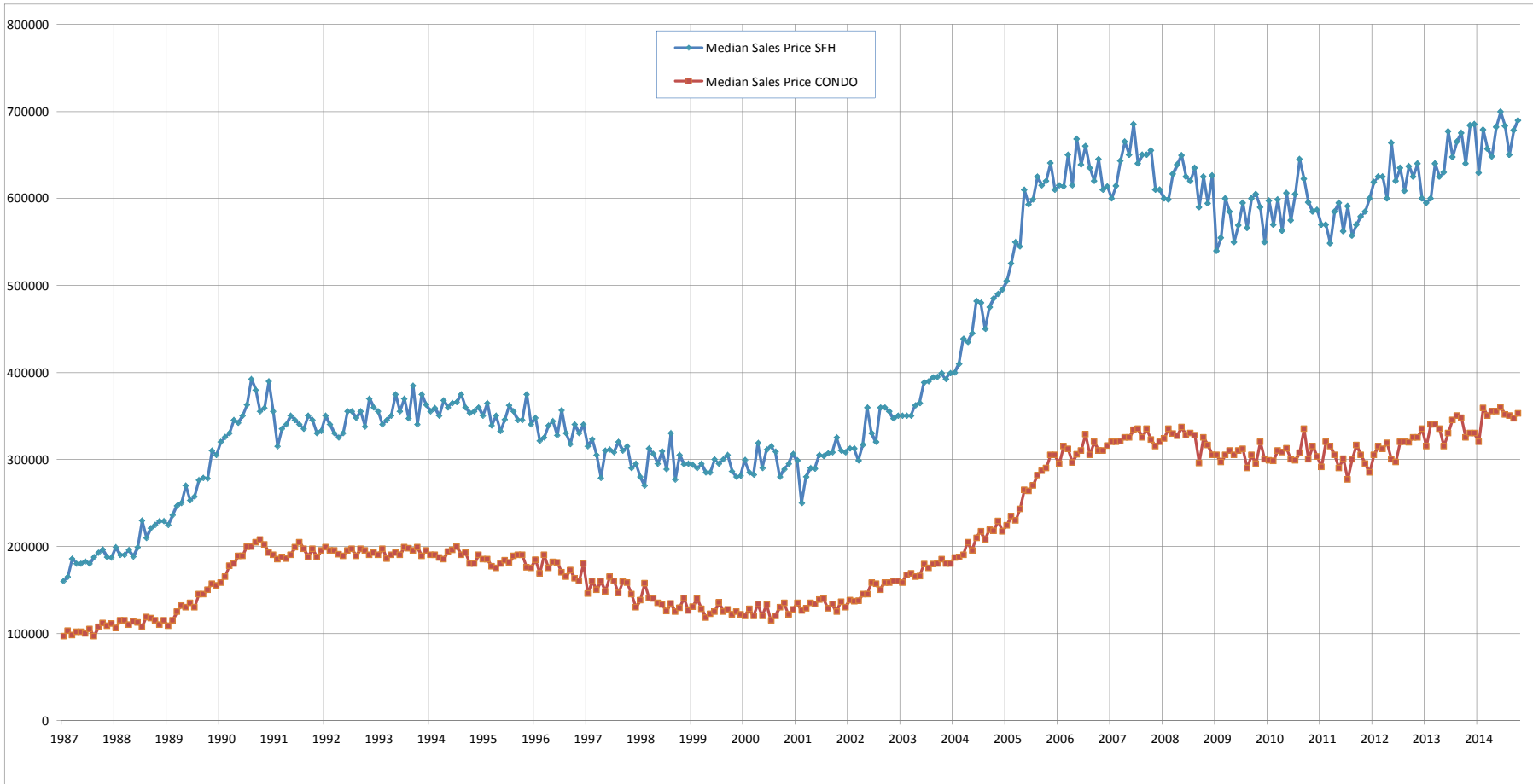


SOURCE: Honolulu Board of REALTORS® , compiled from MLS data.

Median Sales Price

Single Family Homes and Condos

OAHU, HAWAII: Jan 1987 to the Present



SOURCE: Honolulu Board of REALTORS®, compiled from MLS data.