

Local Market Update

Single Family Homes

May 2015



May 2015		New Listings			Closed Sales			Median Sales Price			Percent of Original Price Received			Days on Market Until Sale			Inventory of Homes for Sale		
		May-15	May-14	Change	May-15	May-14	Change	May-15	May-14	Change	May-15	May-14	Change	May-15	May-14	Change	May-15	May-14	Change
Aina Haina - Kuliouou	1-3-6 to 1-3-8	18	17	6%	8	7	14%	\$1,875,000	\$1,650,000	14%	95.1%	89.2%	7%	60	65	-8%	57	44	30%
Ala Moana - Kakaako	1-2-3	5	0	-	1	0	-	\$1,200,000	\$0	-	96.0%	0.0%	-	60	0	-	1	0	-
Downtown - Nuuanu	1-1-8 to 1-2-2	13	14	-7%	3	9	-67%	\$850,000	\$835,000	2%	91.9%	100.0%	-8%	24	11	118%	30	36	-17%
Ewa Plain	1-9-1	66	82	-20%	45	55	-18%	\$555,000	\$534,000	4%	100.0%	99.8%	0%	11	19	-42%	142	174	-18%
Hawaii Kai	1-3-9	27	32	-16%	18	21	-14%	\$1,467,500	\$935,000	57%	93.5%	95.9%	-3%	16	37	-57%	94	73	29%
Kailua - Waimanalo	1-4-1 to Selected 1-4-4	25	42	-40%	25	35	-29%	\$1,170,000	\$940,000	24%	91.4%	96.4%	-5%	18	26	-31%	110	109	1%
Kalihi - Palama	1-1-2 to 1-1-7	7	11	-36%	15	5	200%	\$710,000	\$500,000	42%	96.1%	87.0%	10%	10	37	-73%	44	44	0%
Kaneohe	Selected 1-4-4 to 1-4-7	33	35	-6%	14	17	-18%	\$775,000	\$735,000	5%	103.7%	96.8%	7%	37	15	147%	75	99	-24%
Kapahulu - Diamond Head	1-3-1 to 1-3-4	27	14	93%	29	20	45%	\$910,000	\$955,000	-5%	102.4%	106.5%	-4%	10	10	0%	89	73	22%
Makaha - Nanakuli	1-8-1 to 1-8-9	23	32	-28%	29	21	38%	\$385,000	\$300,000	28%	102.7%	89.6%	15%	31	27	15%	105	111	-5%
Makakilo	1-9-2 to 1-9-3	25	34	-26%	16	12	33%	\$672,500	\$604,000	11%	98.0%	100.7%	-3%	37	14	164%	46	65	-29%
Makiki - Moiliili	1-2-4 to 1-2-9 (except 1-2-6)	20	9	122%	11	11	0%	\$1,225,000	\$975,000	26%	98.0%	97.5%	1%	27	30	-10%	57	39	46%
Mililani	Selected 1-9-4 to 1-9-5	26	40	-35%	22	30	-27%	\$701,000	\$681,000	3%	98.8%	98.8%	0%	14	22	-36%	71	74	-4%
Moanalua - Salt Lake	1-1-1	2	7	-71%	4	2	100%	\$847,000	\$867,500	-2%	92.9%	98.3%	-5%	12	25	-52%	8	16	-50%
North Shore	1-5-6 to 1-6-9	12	15	-20%	11	9	22%	\$650,000	\$687,500	-5%	89.7%	105.8%	-15%	11	78	-86%	74	65	14%
Pearl City - Aiea	1-9-6 to 1-9-9	25	25	0%	21	11	91%	\$645,000	\$625,000	3%	97.9%	98.4%	-1%	14	22	-36%	64	45	42%
Wahiawa	1-7-1 to 1-7-7	8	8	0%	4	8	-50%	\$517,500	\$459,500	13%	97.8%	92.5%	6%	37	58	-36%	19	26	-27%
Waialae - Kahala	1-3-5	18	14	29%	3	11	-73%	\$4,590,000	\$1,460,000	214%	100.0%	106.2%	-6%	8	13	-38%	77	64	20%
Waikiki	1-2-6	1	0	-	0	0	-	\$0	\$0	-	0.0%	0.0%	-	0	0	-	1	0	-
Waipahu	1-9-4	30	26	15%	26	16	63%	\$583,000	\$582,500	0%	97.2%	97.2%	0%	17	29	-41%	63	65	-3%
Windward Coast	1-4-8 to 1-5-5	6	8	-25%	4	5	-20%	\$720,000	\$560,000	29%	90.7%	97.4%	-7%	123	24	413%	32	57	-44%

Year to Date		New Listings			Closed Sales			Median Sales Price			Percent of Original Price Received			Days on Market Until Sale		
		May-15	May-14	Change	May-15	May-14	Change	May-15	May-14	Change	May-15	May-14	Change	May-15	May-14	Change
Aina Haina - Kuliouou	1-3-6 to 1-3-8	64	57	12%	33	22	50%	\$1,100,000	\$1,182,500	-7%	86.3%	91.7%	-6%	26	36	-28%
Ala Moana - Kakaako	1-2-3	6	0	-	4	2	100%	\$1,217,500	\$1,015,000	20%	95.5%	92.5%	3%	43	173	-75%
Downtown - Nuuanu	1-1-8 to 1-2-2	47	52	-10%	31	30	3%	\$850,000	\$901,844	-6%	99.4%	95.5%	4%	22	11	100%
Ewa Plain	1-9-1	331	374	-11%	235	240	-2%	\$566,000	\$510,000	11%	99.5%	99.5%	0%	16	22	-27%
Hawaii Kai	1-3-9	118	110	7%	72	64	13%	\$1,045,000	\$970,000	8%	97.0%	97.3%	0%	22	26	-15%
Kailua - Waimanalo	1-4-1 to Selected 1-4-4	173	171	1%	115	119	-3%	\$1,032,000	\$935,000	10%	95.6%	97.5%	-2%	18	24	-25%
Kalihi - Palama	1-1-2 to 1-1-7	57	70	-19%	43	41	5%	\$705,000	\$630,000	12%	94.3%	96.9%	-3%	18	24	-25%
Kaneohe	Selected 1-4-4 to 1-4-7	120	138	-13%	69	82	-16%	\$740,000	\$717,000	3%	98.8%	99.6%	-1%	31	13	138%
Kapahulu - Diamond Head	1-3-1 to 1-3-4	135	116	16%	95	72	32%	\$860,000	\$835,000	3%	98.1%	101.0%	-3%	22	15	47%
Makaha - Nanakuli	1-8-1 to 1-8-9	165	187	-12%	96	77	25%	\$350,000	\$344,000	2%	95.9%	98.3%	-2%	32	30	7%
Makakilo	1-9-2 to 1-9-3	100	139	-28%	63	65	-3%	\$625,000	\$599,000	4%	100.0%	99.8%	0%	29	25	16%
Makiki - Moiliili	1-2-4 to 1-2-9 (except 1-2-6)	77	56	38%	37	43	-14%	\$1,135,000	\$1,070,000	6%	95.4%	99.1%	-4%	23	20	15%
Mililani	Selected 1-9-4 to 1-9-5	138	124	11%	82	91	-10%	\$680,000	\$665,000	2%	97.1%	99.0%	-2%	22	15	47%
Moanalua - Salt Lake	1-1-1	24	27	-11%	18	15	20%	\$732,500	\$768,000	-5%	97.0%	93.1%	4%	12	28	-57%
North Shore	1-5-6 to 1-6-9	85	73	16%	42	36	17%	\$752,500	\$799,500	-6%	95.3%	98.2%	-3%	32	22	45%
Pearl City - Aiea	1-9-6 to 1-9-9	122	105	16%	87	70	24%	\$640,000	\$625,000	2%	98.5%	100.4%	-2%	22	22	0%
Wahiawa	1-7-1 to 1-7-7	39	38	3%	21	29	-28%	\$500,000	\$464,000	8%	100.0%	94.9%	5%	27	41	-34%
Waialae - Kahala	1-3-5	84	77	9%	29	43	-33%	\$1,825,000	\$1,755,000	4%	98.6%	93.6%	5%	15	19	-21%
Waikiki	1-2-6	1	0	-	0	0	-	\$0	\$0	-	0.0%	0.0%	-	0	0	-
Waipahu	1-9-4	115	124	-7%	88	86	2%	\$581,000	\$579,000	0%	97.0%	99.0%	-2%	24	24	0%
Windward Coast	1-4-8 to 1-5-5	31	46	-33%	16	14	14%	\$667,500	\$674,163	-1%	92.2%	95.6%	-4%	57	25	128%

SOURCE: Honolulu Board of REALTORS®, compiled from MLS data.

Local Market Update

Condos May 2015



May 2015		New Listings			Closed Sales			Median Sales Price			Percent of Original Price Received			Days on Market Until Sale			Inventory of Homes for Sale		
		May-15	May-14	Change	May-15	May-14	Change	May-15	May-14	Change	May-15	May-14	Change	May-15	May-14	Change	May-15	May-14	Change
Aina Haina - Kuliouou	1-3-6 to 1-3-8	1	0	-	1	0	-	\$660,000	\$0	-	100.2%	0.0%	-	9	0	-	1	1	-
Ala Moana - Kakaako	1-2-3	67	59	14%	30	49	-39%	\$346,000	\$470,000	-26%	98.6%	101.1%	-2%	44	15	193%	234	202	16%
Downtown - Nuuanu	1-1-8 to 1-2-2	46	40	15%	33	27	22%	\$500,000	\$330,000	52%	97.1%	94.8%	2%	27	29	-7%	162	119	36%
Ewa Plain	1-9-1	45	52	-13%	46	34	35%	\$408,000	\$389,500	5%	99.0%	98.6%	0%	22	23	-4%	123	130	-5%
Hawaii Kai	1-3-9	22	19	16%	16	21	-24%	\$600,000	\$655,000	-8%	98.4%	98.5%	0%	22	11	100%	42	60	-30%
Kailua - Waimanalo	1-4-1 to Selected 1-4-4	40	13	208%	8	8	0%	\$715,000	\$526,250	36%	99.7%	101.5%	-2%	10	7	43%	12	20	-40%
Kalihi - Palama	1-1-2 to 1-1-7	10	11	-9%	12	9	33%	\$395,000	\$470,000	-16%	95.2%	100.0%	-5%	38	21	81%	29	33	-12%
Kaneohe	Selected 1-4-4 to 1-4-7	29	11	164%	19	24	-21%	\$475,000	\$409,000	16%	100.0%	99.8%	0%	8	12	-33%	46	52	-12%
Kapahulu - Diamond Head	1-3-1 to 1-3-4	13	3	333%	9	12	-25%	\$570,000	\$513,500	11%	96.6%	100.2%	-4%	19	28	-32%	55	69	-20%
Makaha - Nanakuli	1-8-1 to 1-8-9	28	28	0%	10	13	-23%	\$124,000	\$130,000	-5%	97.6%	83.9%	16%	33	23	43%	64	75	-15%
Makakilo	1-9-2 to 1-9-3	19	10	90%	16	7	129%	\$313,750	\$311,000	1%	98.8%	94.5%	5%	10	24	-58%	43	19	126%
Makiki - Moiliili	1-2-4 to 1-2-9 (except 1-2-6)	49	64	-23%	46	54	-15%	\$348,750	\$360,000	-3%	99.8%	98.0%	2%	18	23	-22%	183	183	0%
Milliani	Selected 1-9-4 to 1-9-5	33	38	-13%	27	32	-16%	\$325,000	\$324,000	0%	101.6%	96.1%	6%	18	20	-10%	86	88	-2%
Moanalua - Salt Lake	1-1-1	21	12	75%	18	27	-33%	\$319,000	\$288,000	11%	98.3%	99.3%	-1%	12	33	-64%	45	51	-12%
North Shore	1-5-6 to 1-6-9	5	5	0%	11	6	83%	\$401,000	\$380,000	6%	97.8%	98.7%	-1%	55	18	206%	25	21	19%
Pearl City - Aiea	1-9-6 to 1-9-9	23	34	-32%	26	29	-10%	\$340,000	\$340,000	0%	99.0%	97.1%	2%	33	19	74%	69	83	-17%
Wahiawa	1-7-1 to 1-7-7	4	4	0%	5	0	-	\$135,100	\$0	-	98.6%	0.0%	-	44	0	-	13	9	44%
Waialae - Kahala	1-3-5	6	8	-25%	5	2	150%	\$530,000	\$546,500	-3%	101.0%	109.5%	-8%	5	11	-55%	15	18	-17%
Waikiki	1-2-6	119	137	-13%	92	85	8%	\$361,500	\$315,000	15%	93.9%	96.9%	-3%	35	29	21%	550	497	11%
Waipahu	1-9-4	29	20	45%	18	17	6%	\$312,500	\$295,000	6%	100.8%	102.4%	-2%	15	19	-21%	48	49	-2%
Windward Coast	1-4-8 to 1-5-5	1	6	-83%	2	1	100%	\$80,500	\$85,000	-5%	88.5%	100.0%	-12%	83	67	24%	20	14	43%

Year to Date		New Listings			Closed Sales			Median Sales Price			Percent of Original Price Received			Days on Market Until Sale		
		May-15	May-14	Change	May-15	May-14	Change	May-15	May-14	Change	May-15	May-14	Change	May-15	May-14	Change
Aina Haina - Kuliouou	1-3-6 to 1-3-8	4	0	-	4	0	-	\$650,000	\$0	-	98.2%	0.0%	-	29	0	-
Ala Moana - Kakaako	1-2-3	338	278	22%	185	215	-14%	\$320,000	\$510,000	-37%	94.4%	96.2%	-2%	38	28	36%
Downtown - Nuuanu	1-1-8 to 1-2-2	246	185	33%	134	123	9%	\$462,500	\$425,000	9%	97.4%	98.8%	-1%	24	23	4%
Ewa Plain	1-9-1	247	249	-1%	181	150	21%	\$399,000	\$377,000	6%	99.6%	99.5%	0%	17	21	-19%
Hawaii Kai	1-3-9	103	101	2%	76	83	-8%	\$605,000	\$600,000	1%	96.1%	96.8%	-1%	21	26	-19%
Kailua - Waimanalo	1-4-1 to Selected 1-4-4	78	55	42%	27	37	-27%	\$625,000	\$451,500	38%	99.4%	100.3%	-1%	9	7	29%
Kalihi - Palama	1-1-2 to 1-1-7	55	72	-24%	34	44	-23%	\$375,000	\$362,500	3%	98.7%	98.8%	0%	25	21	19%
Kaneohe	Selected 1-4-4 to 1-4-7	110	89	24%	77	79	-3%	\$489,000	\$435,000	12%	101.9%	99.3%	3%	11	13	-15%
Kapahulu - Diamond Head	1-3-1 to 1-3-4	63	75	-16%	39	36	8%	\$570,000	\$498,500	14%	96.8%	98.7%	-2%	30	13	131%
Makaha - Nanakuli	1-8-1 to 1-8-9	98	115	-15%	49	68	-28%	\$130,000	\$126,250	3%	93.5%	91.8%	2%	39	36	8%
Makakilo	1-9-2 to 1-9-3	83	49	69%	57	33	73%	\$313,000	\$288,000	9%	99.4%	97.6%	2%	15	28	-46%
Makiki - Moiliili	1-2-4 to 1-2-9 (except 1-2-6)	326	327	0%	218	224	-3%	\$345,000	\$339,500	2%	98.7%	97.4%	1%	21	23	-9%
Milliani	Selected 1-9-4 to 1-9-5	185	166	11%	131	108	21%	\$336,000	\$300,000	12%	99.1%	100.2%	-1%	11	16	-31%
Moanalua - Salt Lake	1-1-1	125	100	25%	77	90	-14%	\$320,000	\$294,500	9%	98.5%	98.3%	0%	17	32	-47%
North Shore	1-5-6 to 1-6-9	32	29	10%	22	22	0%	\$398,500	\$316,250	26%	98.4%	97.5%	1%	56	72	-22%
Pearl City - Aiea	1-9-6 to 1-9-9	151	149	1%	115	119	-3%	\$330,000	\$320,000	3%	95.1%	97.9%	-3%	17	21	-19%
Wahiawa	1-7-1 to 1-7-7	22	14	57%	19	8	138%	\$144,000	\$137,000	5%	97.0%	89.8%	8%	20	19	5%
Waialae - Kahala	1-3-5	27	24	13%	16	18	-11%	\$532,500	\$491,500	8%	100.5%	100.5%	0%	13	28	-54%
Waikiki	1-2-6	716	680	5%	364	373	-2%	\$375,000	\$320,000	17%	96.3%	94.7%	2%	40	30	33%
Waipahu	1-9-4	121	111	9%	91	83	10%	\$316,000	\$300,000	5%	97.2%	100.0%	-3%	15	19	-21%
Windward Coast	1-4-8 to 1-5-5	21	14	50%	7	7	0%	\$197,000	\$205,000	-4%	100.0%	100.0%	0%	39	67	-42%

SOURCE: Honolulu Board of REALTORS®, compiled from MLS data.

Local Market Update

May 2015

Aina Haina - Kuliouou

(1-3-6 to 1-3-8)

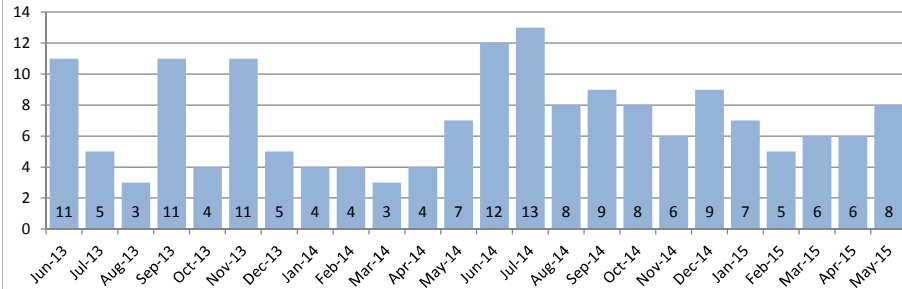


May 2015

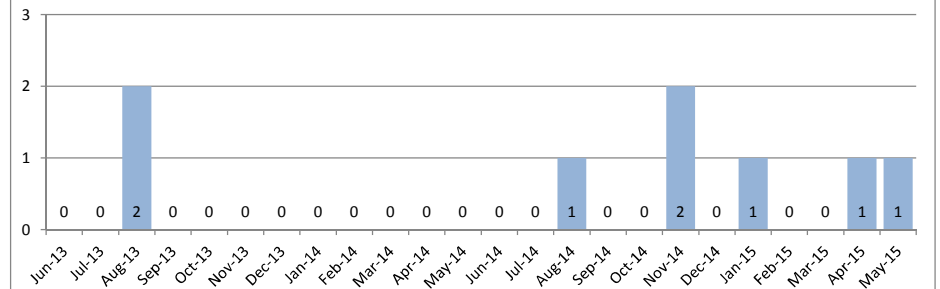
Single Family Homes	May			Year to Date		
	2015	2014	Change	2015	2014	Change
New Listings	18	17	6%	64	57	12%
Closed Sales	8	7	14%	33	22	50%
Median Sales Price	\$1,875,000	\$1,650,000	14%	\$1,100,000	\$1,182,500	-7%
Percent of Original List Price Received	95.1%	89.2%	7%	86.3%	91.7%	-6%
Median Days on Market Until Sale	60	65	-8%	26	36	-28%
Inventory of Homes for Sale	57	44	30%	-	-	-

Condos	May			Year to Date		
	2015	2014	Change	2015	2014	Change
New Listings	1	0	-	4	0	-
Closed Sales	1	0	-	4	0	-
Median Sales Price	\$660,000	\$0	-	\$650,000	\$0	-
Percent of Original List Price Received	100.2%	0.0%	-	98.2%	0.0%	-
Median Days on Market Until Sale	9	0	-	29	0	-
Inventory of Homes for Sale	1	1	-	-	-	-

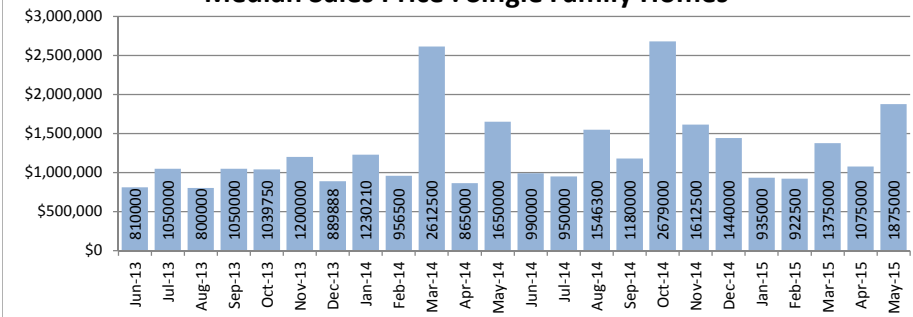
Closed Sales : Single Family Homes



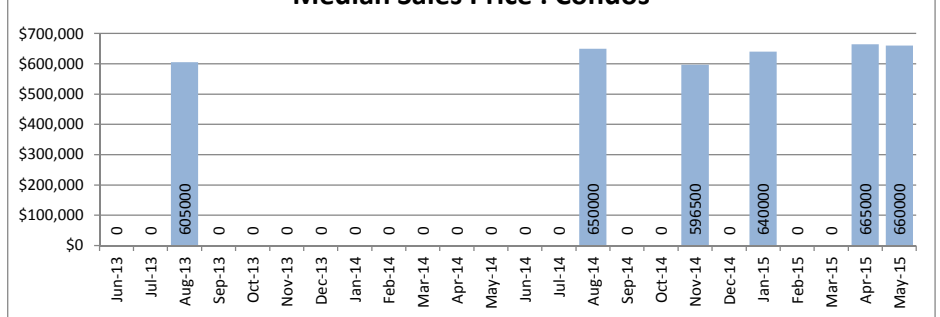
Closed Sales : Condos



Median Sales Price : Single Family Homes



Median Sales Price : Condos



SOURCE: Honolulu Board of REALTORS®, compiled from MLS data.

Local Market Update

May 2015

Ala Moana - Kakaako

(1-2-3)

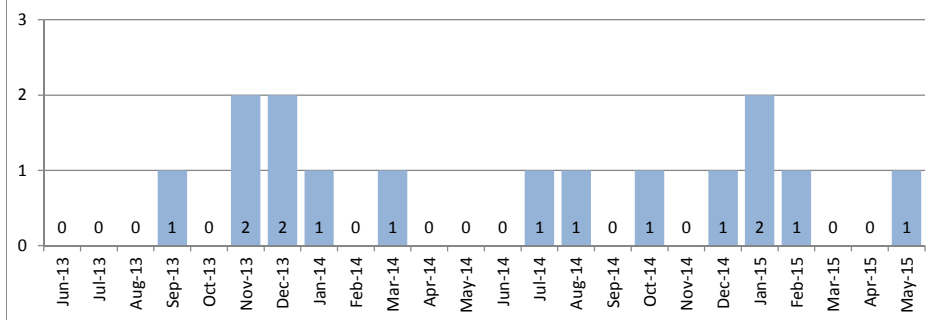


May 2015

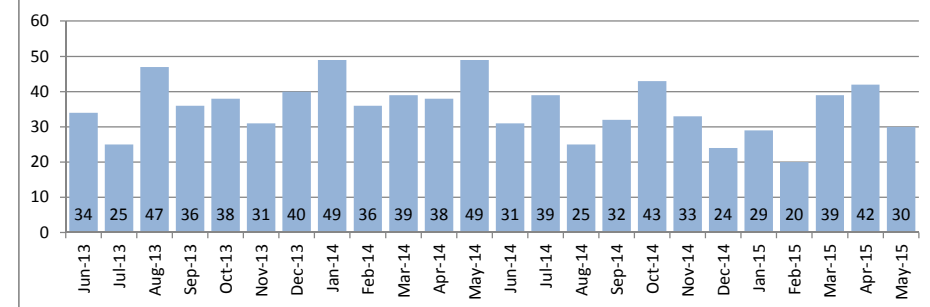
Single Family Homes	May			Year to Date		
	2015	2014	Change	2015	2014	Change
New Listings	5	0	-	6	0	-
Closed Sales	1	0	-	4	2	100%
Median Sales Price	\$1,200,000	\$0	-	\$1,217,500	\$1,015,000	20%
Percent of Original List Price Received	96.0%	0.0%	-	95.5%	92.5%	3%
Median Days on Market Until Sale	60	0	-	43	173	-75%
Inventory of Homes for Sale	1	0	-	-	-	-

Condos	May			Year to Date		
	2015	2014	Change	2015	2014	Change
New Listings	67	59	14%	338	278	22%
Closed Sales	30	49	-39%	185	215	-14%
Median Sales Price	\$346,000	\$470,000	-26%	\$320,000	\$510,000	-37%
Percent of Original List Price Received	98.6%	101.1%	-2%	94.4%	96.2%	-2%
Median Days on Market Until Sale	44	15	193%	38	28	36%
Inventory of Homes for Sale	234	202	16%	-	-	-

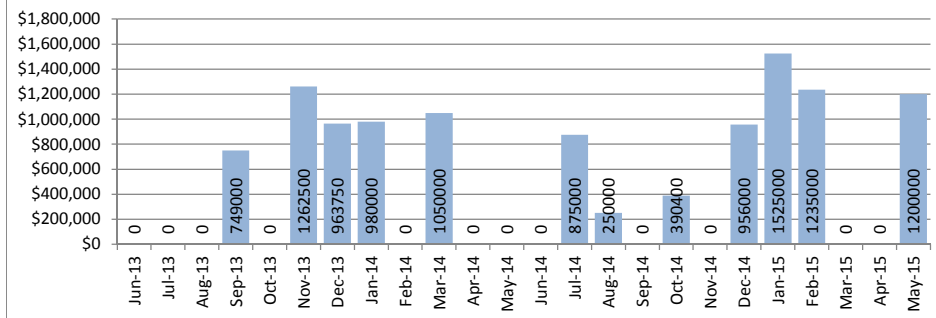
Closed Sales : Single Family Homes



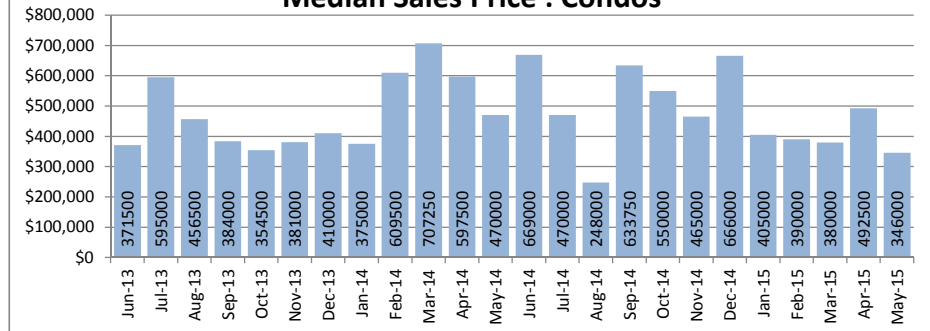
Closed Sales : Condos



Median Sales Price : Single Family Homes



Median Sales Price : Condos



SOURCE: Honolulu Board of REALTORS® , compiled from MLS data.

Local Market Update

May 2015

Downtown - Nuuanu

1-1-8 to 1-2-2

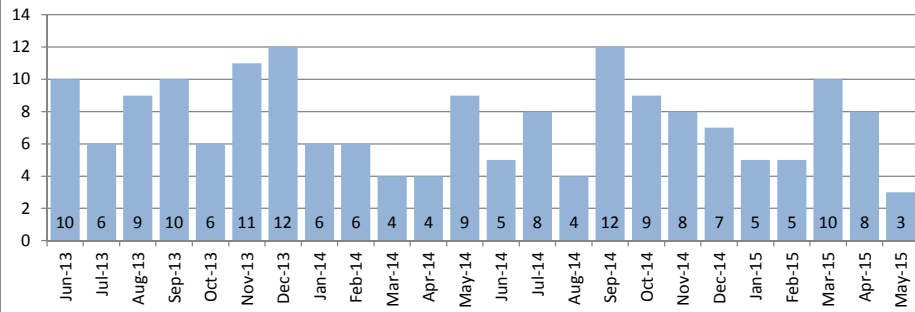


May 2015

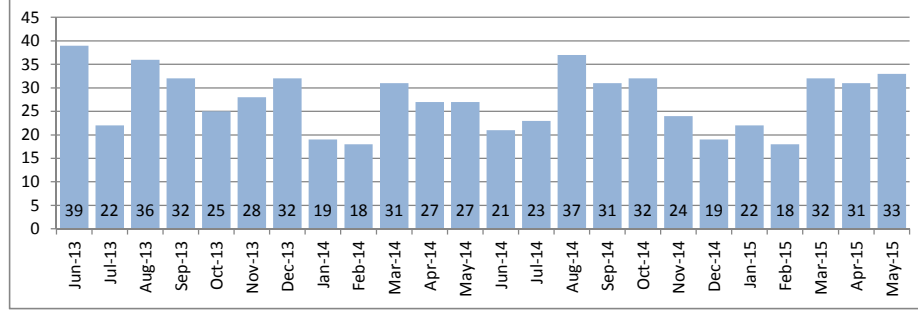
Single Family Homes	May			Year to Date		
	2015	2014	Change	2015	2014	Change
New Listings	13	14	-7%	47	52	-10%
Closed Sales	3	9	-67%	31	30	3%
Median Sales Price	\$850,000	\$835,000	2%	\$850,000	\$901,844	-6%
Percent of Original List Price Received	91.9%	100.0%	-8%	99.4%	95.5%	4%
Median Days on Market Until Sale	24	11	118%	22	11	100%
Inventory of Homes for Sale	30	36	-17%	-	-	-

Condos	May			Year to Date		
	2015	2014	Change	2015	2014	Change
New Listings	46	40	15%	246	185	33%
Closed Sales	33	27	22%	134	123	9%
Median Sales Price	\$500,000	\$330,000	52%	\$462,500	\$425,000	9%
Percent of Original List Price Received	97.1%	94.8%	2%	97.4%	98.8%	-1%
Median Days on Market Until Sale	27	29	-7%	24	23	4%
Inventory of Homes for Sale	162	119	36%	-	-	-

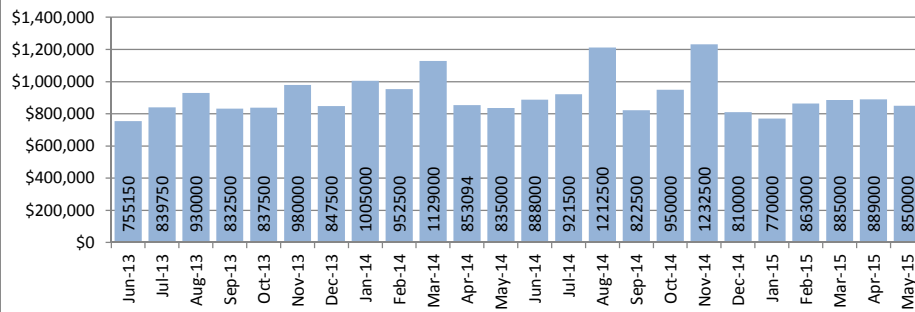
Closed Sales : Single Family Homes



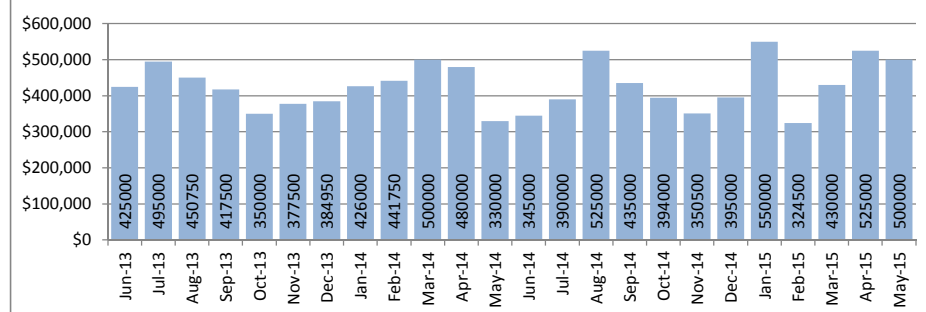
Closed Sales : Condos



Median Sales Price : Single Family Homes



Median Sales Price : Condos



SOURCE: Honolulu Board of REALTORS®, compiled from MLS data.

Local Market Update

May 2015



Ewa Plain

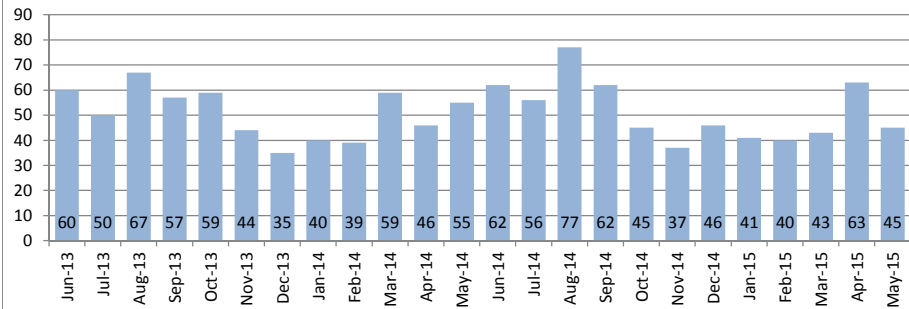
1-9-1

May 2015

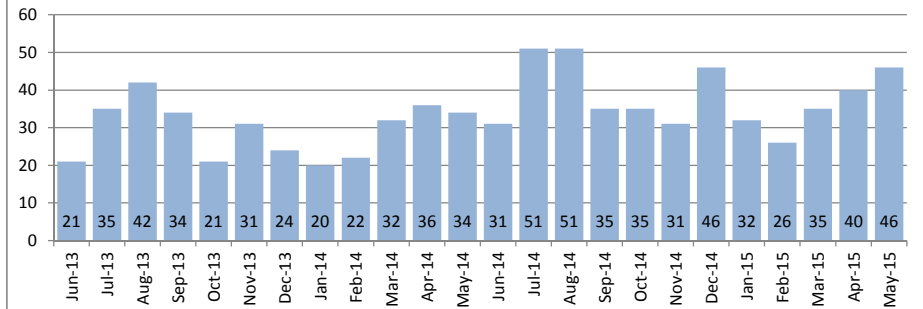
Single Family Homes	May			Year to Date		
	2015	2014	Change	2015	2014	Change
New Listings	66	82	-20%	331	374	-11%
Closed Sales	45	55	-18%	235	240	-2%
Median Sales Price	\$555,000	\$534,000	4%	\$566,000	\$510,000	11%
Percent of Original List Price Received	100.0%	99.8%	0%	99.5%	99.5%	0%
Median Days on Market Until Sale	11	19	-42%	16	22	-27%
Inventory of Homes for Sale	142	174	-18%	-	-	-

Condos	May			Year to Date		
	2015	2014	Change	2015	2014	Change
New Listings	45	52	-13%	247	249	-1%
Closed Sales	46	34	35%	181	150	21%
Median Sales Price	\$408,000	\$389,500	5%	\$399,000	\$377,000	6%
Percent of Original List Price Received	99.0%	98.6%	0%	99.6%	99.5%	0%
Median Days on Market Until Sale	22	23	-4%	17	21	-19%
Inventory of Homes for Sale	123	130	-5%	-	-	-

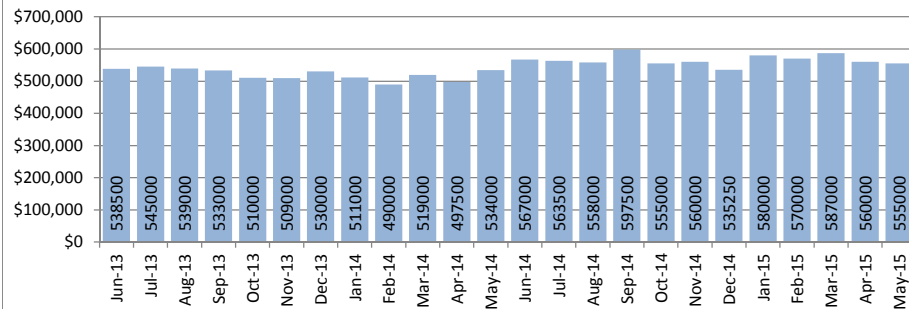
Closed Sales : Single Family Homes



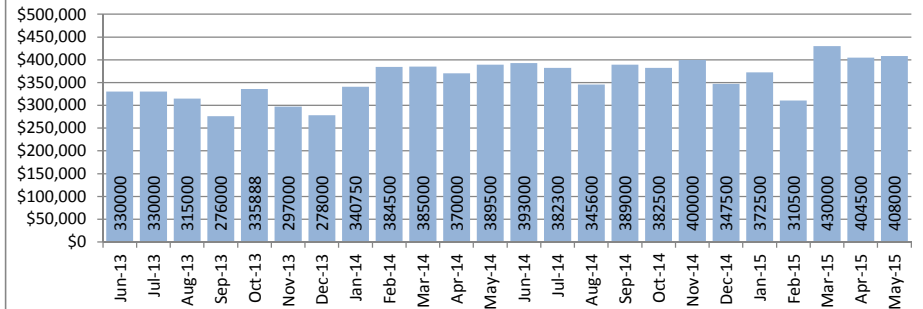
Closed Sales : Condos



Median Sales Price : Single Family Homes



Median Sales Price : Condos



SOURCE: Honolulu Board of REALTORS®, compiled from MLS data.

Local Market Update

May 2015

Hawaii Kai

1-3-9

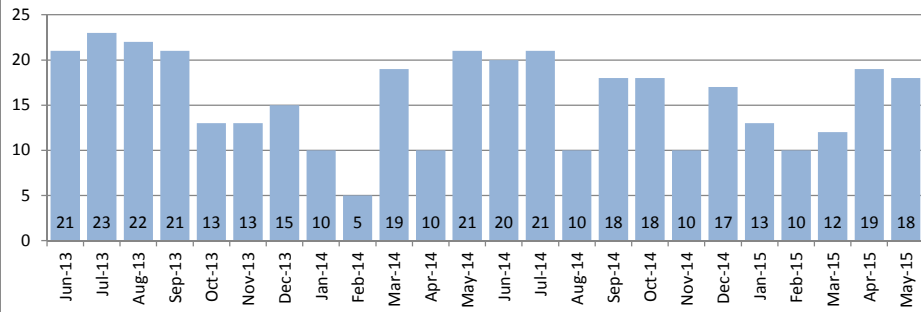


May 2015

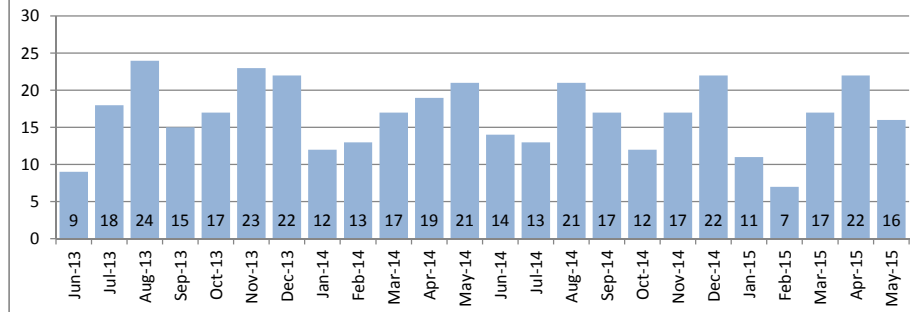
Single Family Homes	May			Year to Date		
	2015	2014	Change	2015	2014	Change
New Listings	27	32	-16%	118	110	7%
Closed Sales	18	21	-14%	72	64	13%
Median Sales Price	\$1,467,500	\$935,000	57%	\$1,045,000	\$970,000	8%
Percent of Original List Price Received	93.5%	95.9%	-3%	97.0%	97.3%	0%
Median Days on Market Until Sale	16	37	-57%	22	26	-15%
Inventory of Homes for Sale	94	73	29%	-	-	-

Condos	May			Year to Date		
	2015	2014	Change	2015	2014	Change
New Listings	22	19	16%	103	101	2%
Closed Sales	16	21	-24%	76	83	-8%
Median Sales Price	\$600,000	\$655,000	-8%	\$605,000	\$600,000	1%
Percent of Original List Price Received	98.4%	98.5%	0%	96.1%	96.8%	-1%
Median Days on Market Until Sale	22	11	100%	21	26	-19%
Inventory of Homes for Sale	42	60	-30%	-	-	-

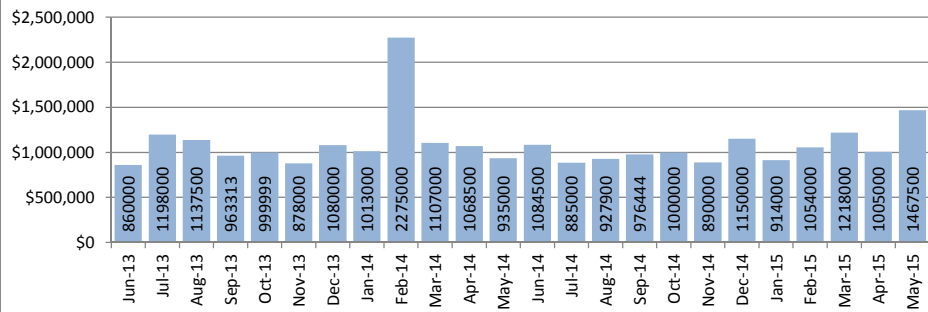
Closed Sales : Single Family Homes



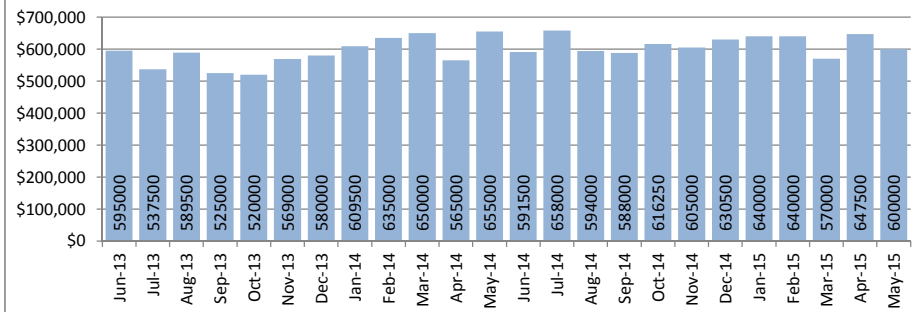
Closed Sales : Condos



Median Sales Price : Single Family Homes



Median Sales Price : Condos



SOURCE: Honolulu Board of REALTORS®, compiled from MLS data.

Local Market Update

May 2015



Kailua - Waimanalo

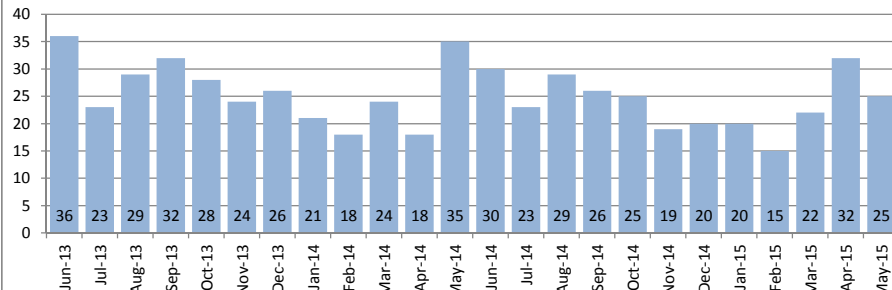
1-4-1 to Selected 1-4-4

May 2015

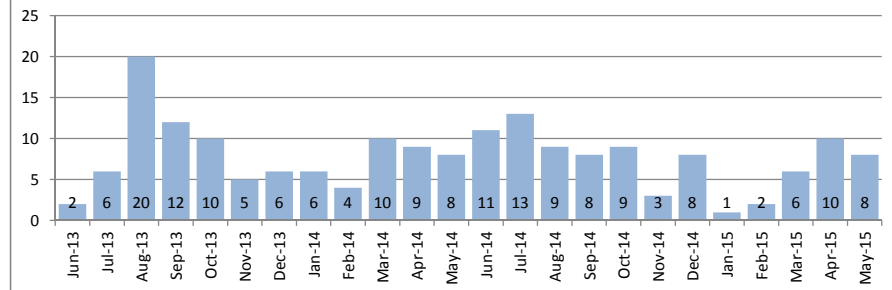
Single Family Homes	May			Year to Date		
	2015	2014	Change	2015	2014	Change
New Listings	25	42	-40%	173	171	1%
Closed Sales	25	35	-29%	115	119	-3%
Median Sales Price	\$1,170,000	\$940,000	24%	\$1,032,000	\$935,000	10%
Percent of Original List Price Received	91.4%	96.4%	-5%	95.6%	97.5%	-2%
Median Days on Market Until Sale	18	26	-31%	18	24	-25%
Inventory of Homes for Sale	110	109	1%	-	-	-

Condos	May			Year to Date		
	2015	2014	Change	2015	2014	Change
New Listings	40	13	208%	78	55	42%
Closed Sales	8	8	0%	27	37	-27%
Median Sales Price	\$715,000	\$526,250	36%	\$625,000	\$451,500	38%
Percent of Original List Price Received	99.7%	101.5%	-2%	99.4%	100.3%	-1%
Median Days on Market Until Sale	10	7	43%	9	7	29%
Inventory of Homes for Sale	12	20	-40%	-	-	-

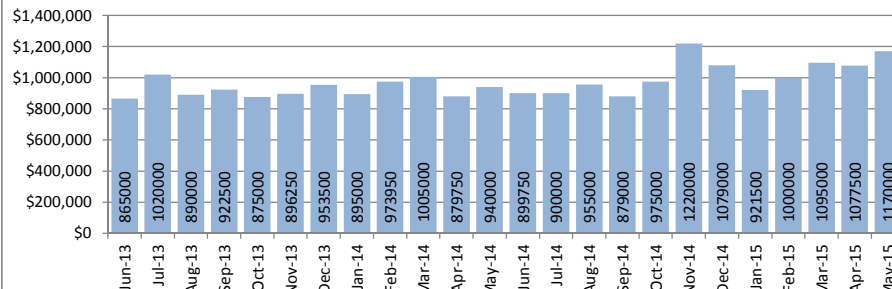
Closed Sales : Single Family Homes



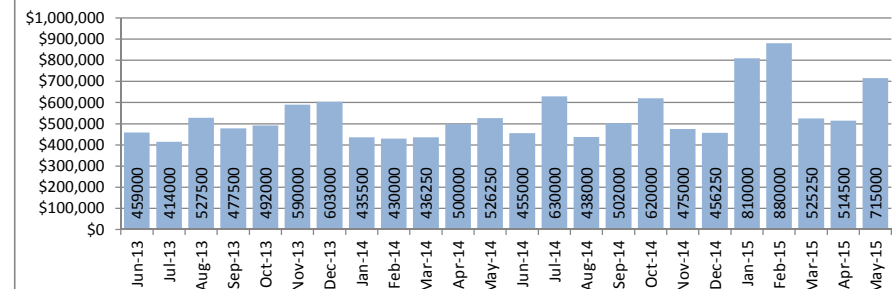
Closed Sales : Condos



Median Sales Price : Single Family Homes



Median Sales Price : Condos



SOURCE: Honolulu Board of REALTORS®, compiled from MLS data.

Local Market Update

May 2015

Kalihi - Palama

1-1-2 to 1-1-7

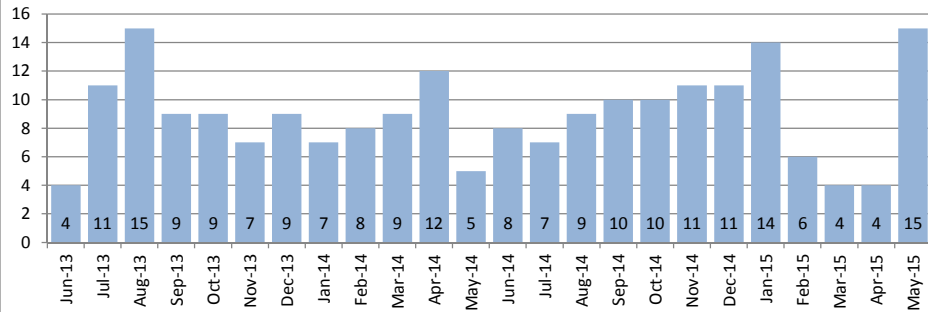


May 2015

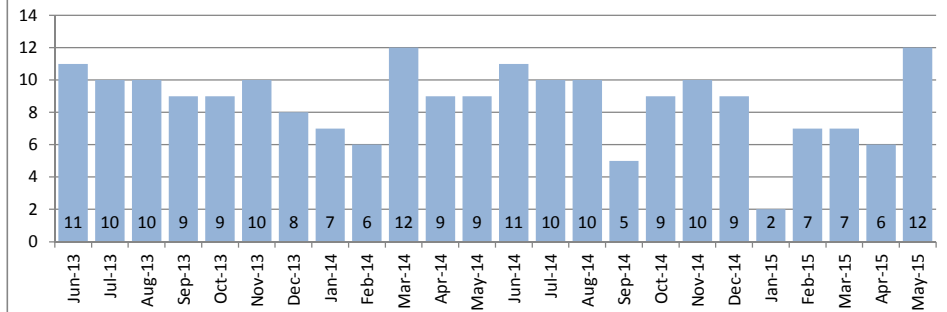
Single Family Homes	May			Year to Date		
	2015	2014	Change	2015	2014	Change
New Listings	7	11	-36%	57	70	-19%
Closed Sales	15	5	200%	43	41	5%
Median Sales Price	\$710,000	\$500,000	42%	\$705,000	\$630,000	12%
Percent of Original List Price Received	96.1%	87.0%	10%	94.3%	96.9%	-3%
Median Days on Market Until Sale	10	37	-73%	18	24	-25%
Inventory of Homes for Sale	44	44	0%	-	-	-

Condos	May			Year to Date		
	2015	2014	Change	2015	2014	Change
New Listings	10	11	-9%	55	72	-24%
Closed Sales	12	9	33%	34	44	-23%
Median Sales Price	\$395,000	\$470,000	-16%	\$375,000	\$362,500	3%
Percent of Original List Price Received	95.2%	100.0%	-5%	98.7%	98.8%	0%
Median Days on Market Until Sale	38	21	81%	25	21	19%
Inventory of Homes for Sale	29	33	-12%	-	-	-

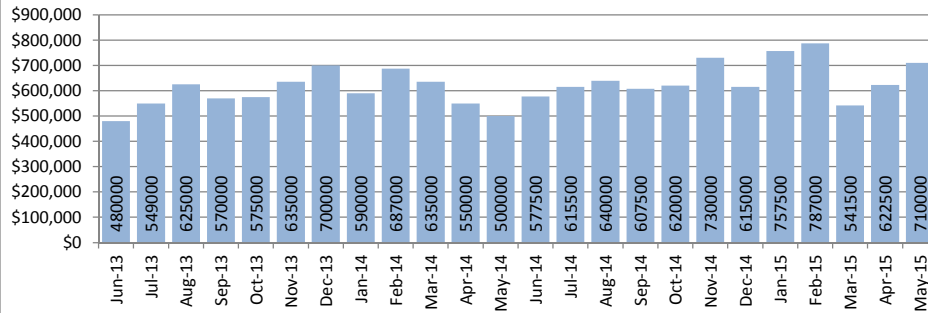
Closed Sales : Single Family Homes



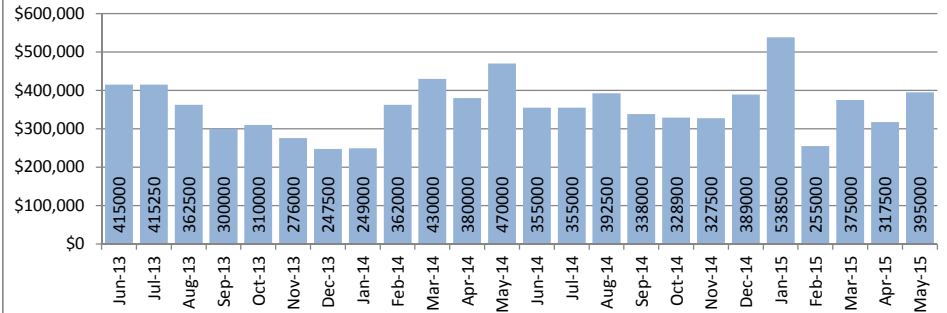
Closed Sales : Condos



Median Sales Price : Single Family Homes



Median Sales Price : Condos



SOURCE: Honolulu Board of REALTORS®, compiled from MLS data.

Local Market Update

May 2015



Kaneohe

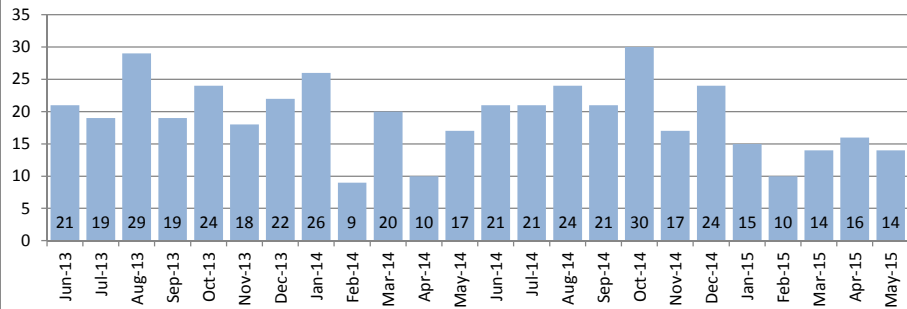
Selected 1-4-4 to 1-4-7

May 2015

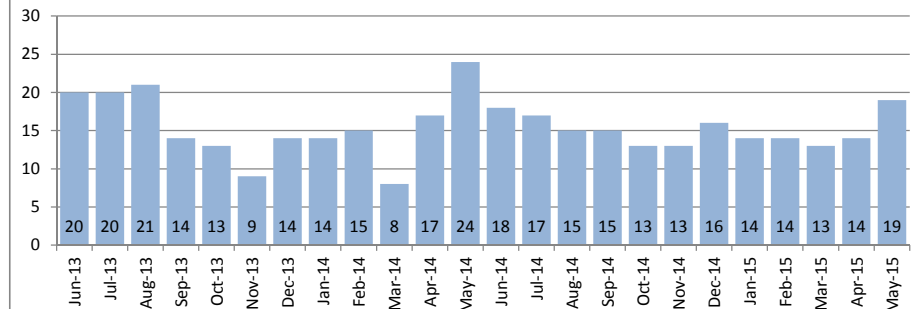
Single Family Homes	May			Year to Date		
	2015	2014	Change	2015	2014	Change
New Listings	33	35	-6%	120	138	-13%
Closed Sales	14	17	-18%	69	82	-16%
Median Sales Price	\$775,000	\$735,000	5%	\$740,000	\$717,000	3%
Percent of Original List Price Received	103.7%	96.8%	7%	98.8%	99.6%	-1%
Median Days on Market Until Sale	37	15	147%	31	13	138%
Inventory of Homes for Sale	75	99	-24%	-	-	-

Condos	May			Year to Date		
	2015	2014	Change	2015	2014	Change
New Listings	29	11	164%	110	89	24%
Closed Sales	19	24	-21%	77	79	-3%
Median Sales Price	\$475,000	\$409,000	16%	\$489,000	\$435,000	12%
Percent of Original List Price Received	100.0%	99.8%	0%	101.9%	99.3%	3%
Median Days on Market Until Sale	8	12	-33%	11	13	-15%
Inventory of Homes for Sale	46	52	-12%	-	-	-

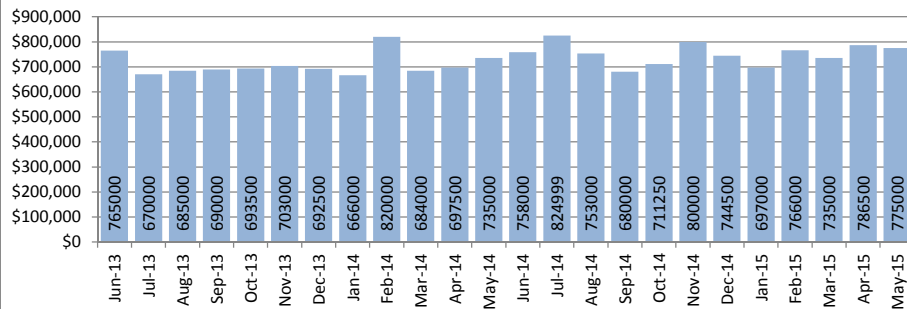
Closed Sales : Single Family Homes



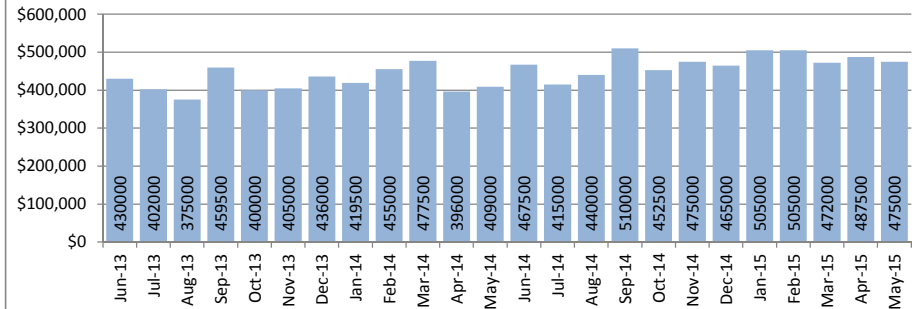
Closed Sales : Condos



Median Sales Price : Single Family Homes



Median Sales Price : Condos



SOURCE: Honolulu Board of REALTORS®, compiled from MLS data.

Local Market Update

May 2015

Kapahulu - Diamond Head

1-3-1 to 1-3-4

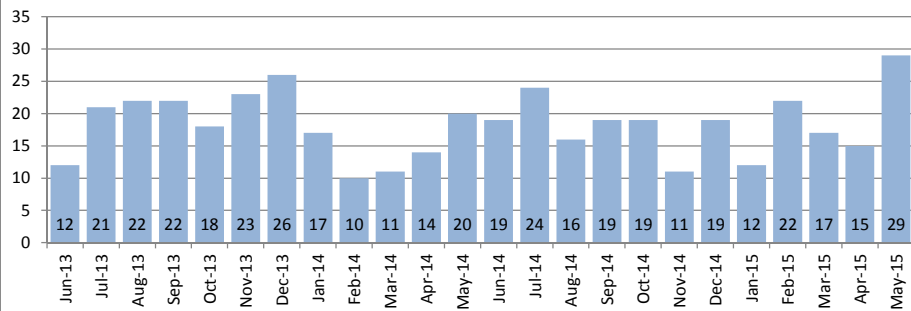


May 2015

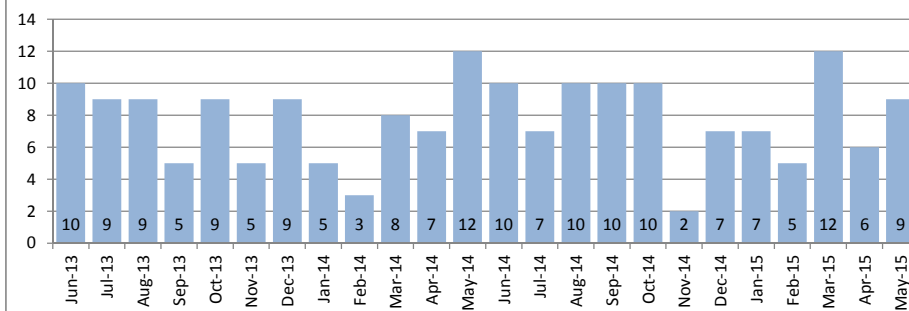
Single Family Homes	May			Year to Date		
	2015	2014	Change	2015	2014	Change
New Listings	27	14	93%	135	116	16%
Closed Sales	29	20	45%	95	72	32%
Median Sales Price	\$910,000	\$955,000	-5%	\$860,000	\$835,000	3%
Percent of Original List Price Received	102.4%	106.5%	-4%	98.1%	101.0%	-3%
Median Days on Market Until Sale	10	10	0%	22	15	47%
Inventory of Homes for Sale	89	73	22%	-	-	-

Condos	May			Year to Date		
	2015	2014	Change	2015	2014	Change
New Listings	13	3	333%	63	75	-16%
Closed Sales	9	12	-25%	39	36	8%
Median Sales Price	\$570,000	\$513,500	11%	\$570,000	\$498,500	14%
Percent of Original List Price Received	96.6%	100.2%	-4%	96.8%	98.7%	-2%
Median Days on Market Until Sale	19	28	-32%	30	13	131%
Inventory of Homes for Sale	55	69	-20%	-	-	-

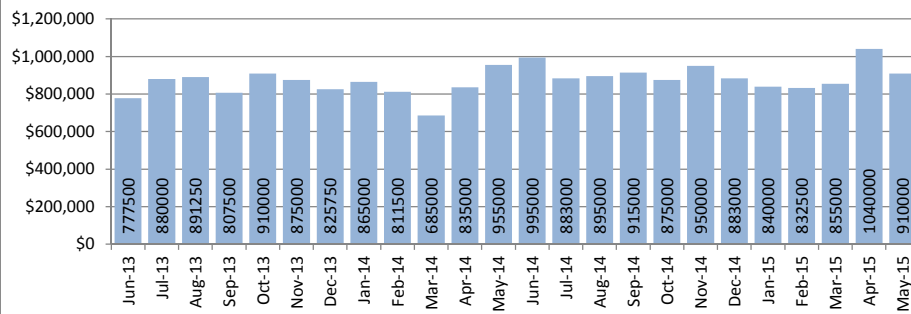
Closed Sales : Single Family Homes



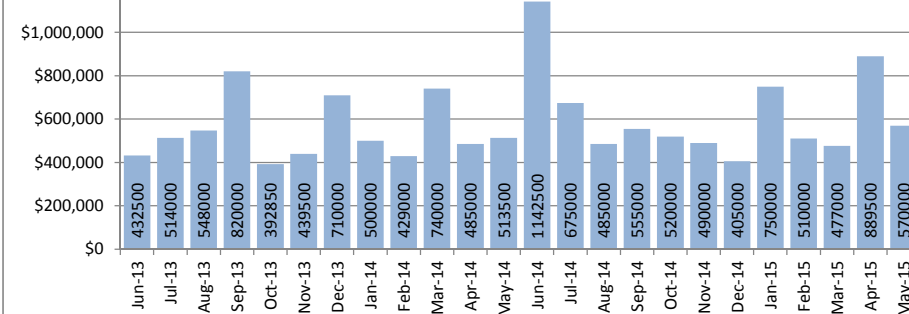
Closed Sales : Condos



Median Sales Price : Single Family Homes



Median Sales Price : Condos



SOURCE: Honolulu Board of REALTORS®, compiled from MLS data.

Local Market Update

May 2015

Makaha - Nanakuli

1-8-1 to 1-8-9

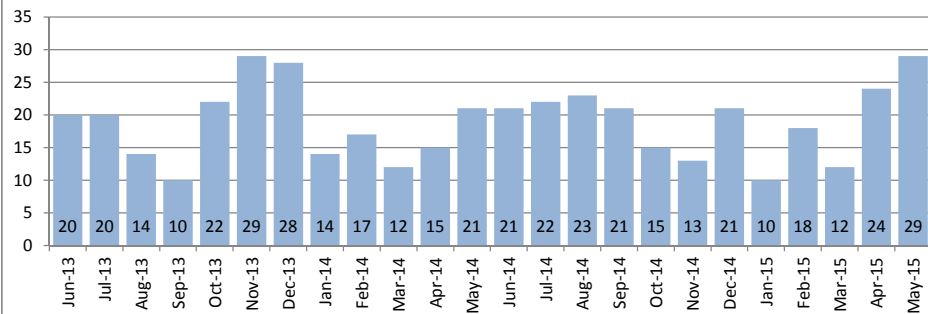


May 2015

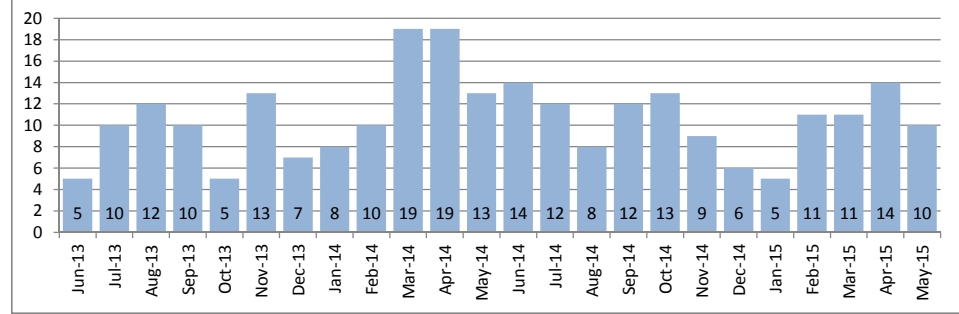
Single Family Homes	May			Year to Date		
	2015	2014	Change	2015	2014	Change
New Listings	23	32	-28%	165	187	-12%
Closed Sales	29	21	38%	96	77	25%
Median Sales Price	\$385,000	\$300,000	28%	\$350,000	\$344,000	2%
Percent of Original List Price Received	102.7%	89.6%	15%	95.9%	98.3%	-2%
Median Days on Market Until Sale	31	27	15%	32	30	7%
Inventory of Homes for Sale	105	111	-5%	-	-	-

Condos	May			Year to Date		
	2015	2014	Change	2015	2014	Change
New Listings	28	28	0%	98	115	-15%
Closed Sales	10	13	-23%	49	68	-28%
Median Sales Price	\$124,000	\$130,000	-5%	\$130,000	\$126,250	3%
Percent of Original List Price Received	97.6%	83.9%	16%	93.5%	91.8%	2%
Median Days on Market Until Sale	33	23	43%	39	36	8%
Inventory of Homes for Sale	64	75	-15%	-	-	-

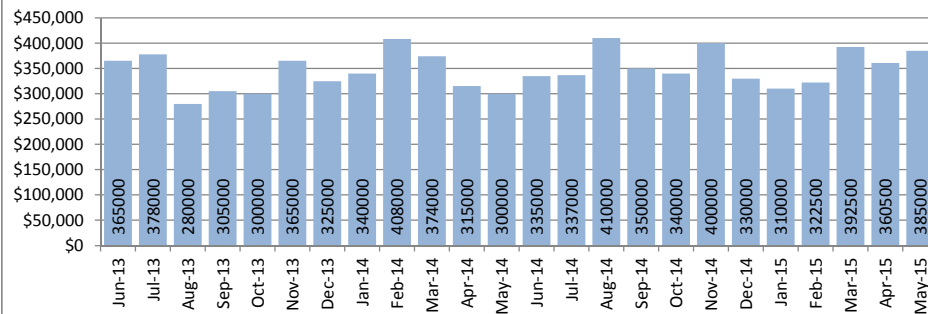
Closed Sales : Single Family Homes



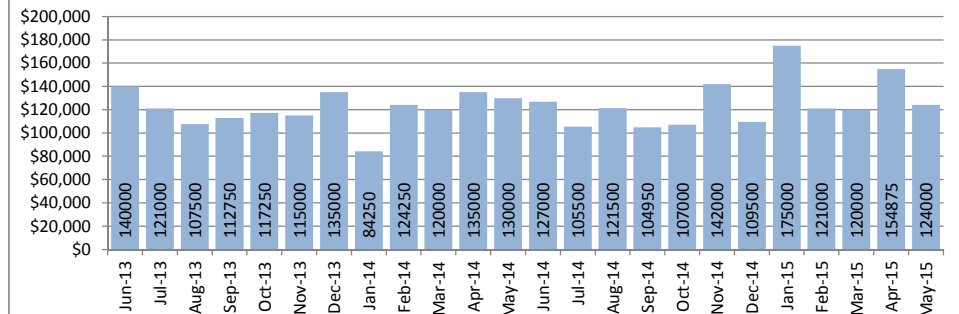
Closed Sales : Condos



Median Sales Price : Single Family Homes



Median Sales Price : Condos



SOURCE: Honolulu Board of REALTORS®, compiled from MLS data.

Local Market Update

May 2015



Makakilo

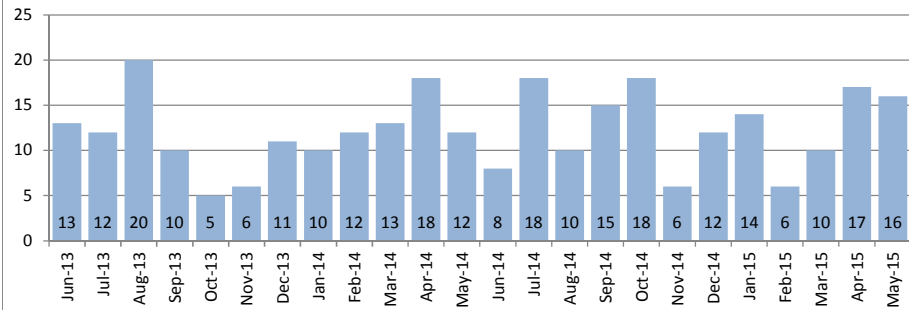
1-9-2 to 1-9-3

May 2015

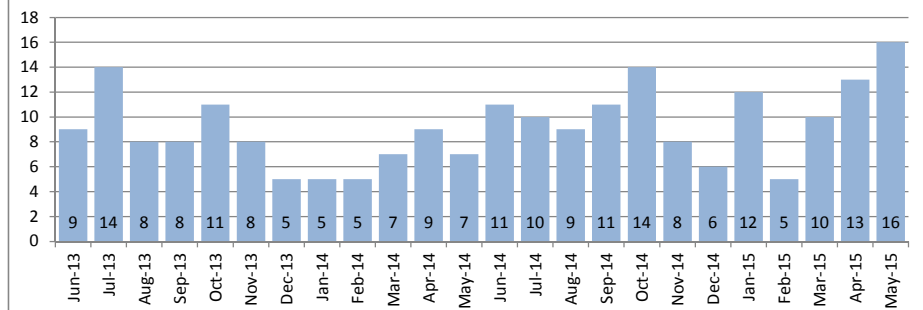
Single Family Homes	May			Year to Date		
	2015	2014	Change	2015	2014	Change
New Listings	25	34	-26%	100	139	-28%
Closed Sales	16	12	33%	63	65	-3%
Median Sales Price	\$672,500	\$604,000	11%	\$625,000	\$599,000	4%
Percent of Original List Price Received	98.0%	100.7%	-3%	100.0%	99.8%	0%
Median Days on Market Until Sale	37	14	164%	29	25	16%
Inventory of Homes for Sale	46	65	-29%	-	-	-

Condos	May			Year to Date		
	2015	2014	Change	2015	2014	Change
New Listings	19	10	90%	83	49	69%
Closed Sales	16	7	129%	57	33	73%
Median Sales Price	\$313,750	\$311,000	1%	\$313,000	\$288,000	9%
Percent of Original List Price Received	98.8%	94.5%	5%	99.4%	97.6%	2%
Median Days on Market Until Sale	10	24	-58%	15	28	-46%
Inventory of Homes for Sale	43	19	126%	-	-	-

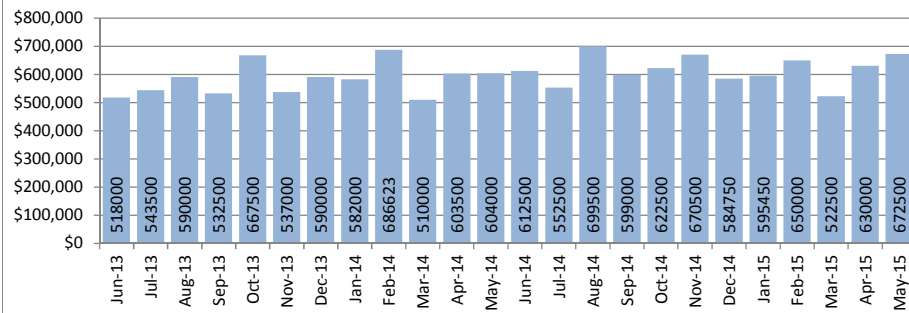
Closed Sales : Single Family Homes



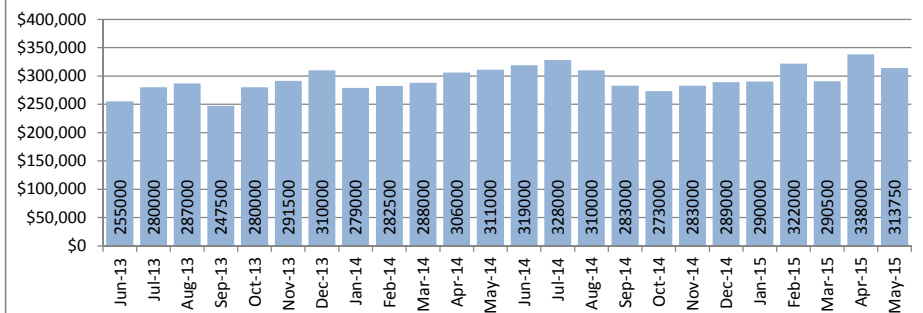
Closed Sales : Condos



Median Sales Price : Single Family Homes



Median Sales Price : Condos



SOURCE: Honolulu Board of REALTORS® , compiled from MLS data.

Local Market Update

May 2015



Makiki - Moiliili

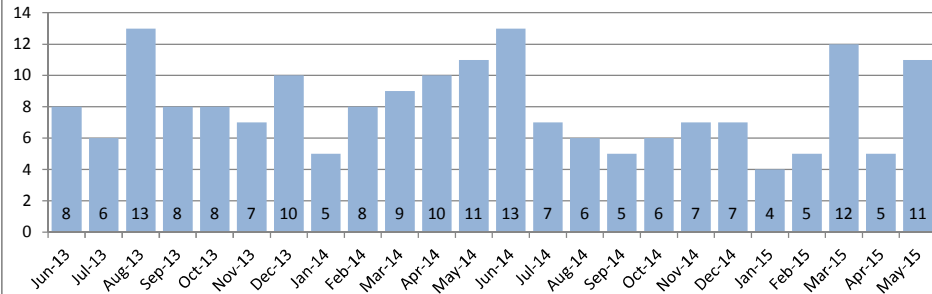
1-2-4 to 1-2-9 (except 1-2-6)

May 2015

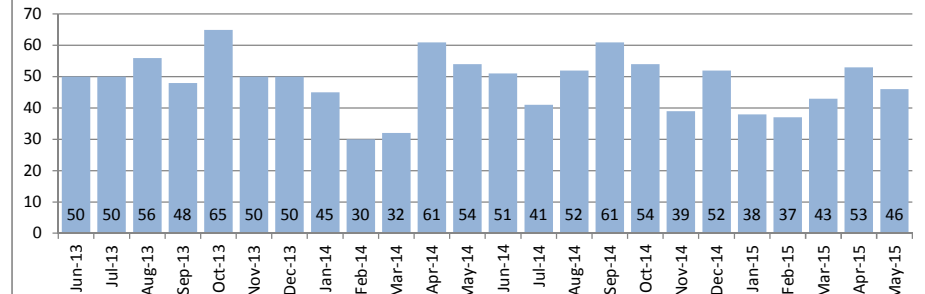
Single Family Homes	May			Year to Date		
	2015	2014	Change	2015	2014	Change
New Listings	20	9	122%	77	56	38%
Closed Sales	11	11	0%	37	43	-14%
Median Sales Price	\$1,225,000	\$975,000	26%	\$1,135,000	\$1,070,000	6%
Percent of Original List Price Received	98.0%	97.5%	1%	95.4%	99.1%	-4%
Median Days on Market Until Sale	27	30	-10%	23	20	15%
Inventory of Homes for Sale	57	39	46%	-	-	-

Condos	May			Year to Date		
	2015	2014	Change	2015	2014	Change
New Listings	49	64	-23%	326	327	0%
Closed Sales	46	54	-15%	218	224	-3%
Median Sales Price	\$348,750	\$360,000	-3%	\$345,000	\$339,500	2%
Percent of Original List Price Received	99.8%	98.0%	2%	98.7%	97.4%	1%
Median Days on Market Until Sale	18	23	-22%	21	23	-9%
Inventory of Homes for Sale	183	183	0%	-	-	-

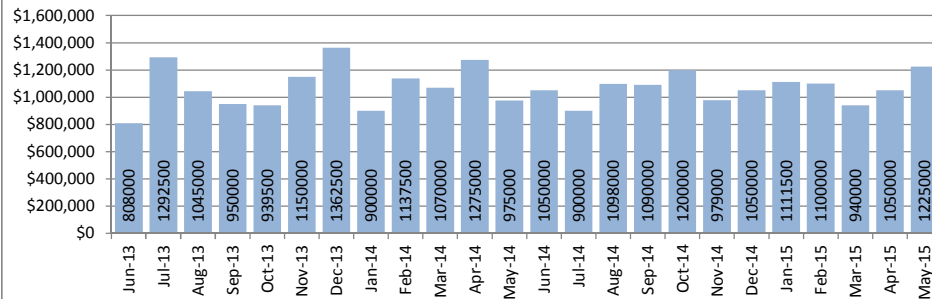
Closed Sales : Single Family Homes



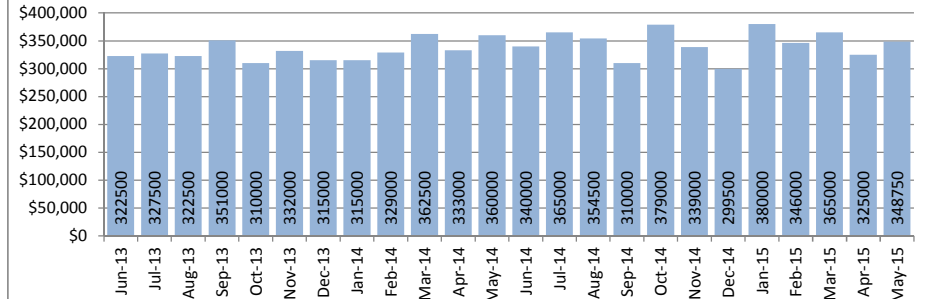
Closed Sales : Condos



Median Sales Price : Single Family Homes



Median Sales Price : Condos



SOURCE: Honolulu Board of REALTORS®, compiled from MLS data.

Local Market Update

May 2015



Mililani

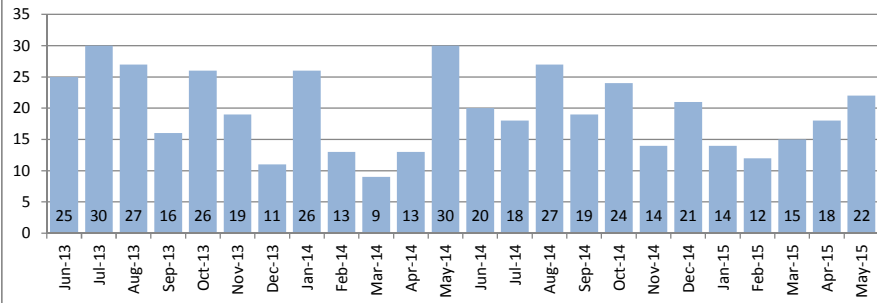
Selected 1-9-4 to 1-9-5

May 2015

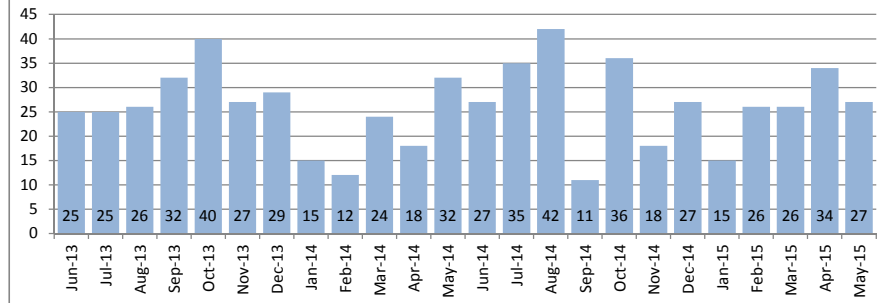
Single Family Homes	May			Year to Date		
	2015	2014	Change	2015	2014	Change
New Listings	26	40	-35%	138	124	11%
Closed Sales	22	30	-27%	82	91	-10%
Median Sales Price	\$701,000	\$681,000	3%	\$680,000	\$665,000	2%
Percent of Original List Price Received	98.8%	98.8%	0%	97.1%	99.0%	-2%
Median Days on Market Until Sale	14	22	-36%	22	15	47%
Inventory of Homes for Sale	71	74	-4%	-	-	-

Condos	May			Year to Date		
	2015	2014	Change	2015	2014	Change
New Listings	33	38	-13%	185	166	11%
Closed Sales	27	32	-16%	131	108	21%
Median Sales Price	\$325,000	\$324,000	0%	\$336,000	\$300,000	12%
Percent of Original List Price Received	101.6%	96.1%	6%	99.1%	100.2%	-1%
Median Days on Market Until Sale	18	20	-10%	11	16	-31%
Inventory of Homes for Sale	86	88	-2%	-	-	-

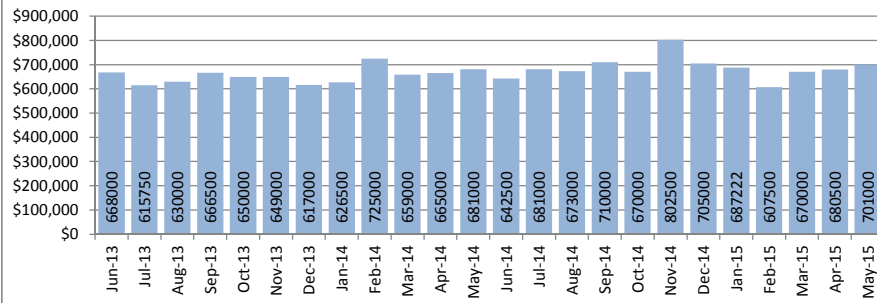
Closed Sales : Single Family Homes



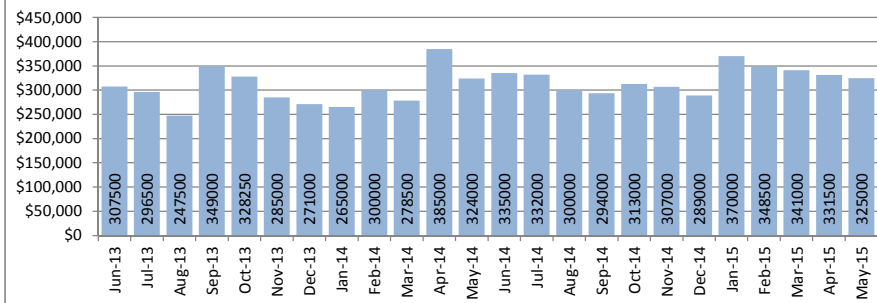
Closed Sales : Condos



Median Sales Price : Single Family Homes



Median Sales Price : Condos



SOURCE: Honolulu Board of REALTORS®, compiled from MLS data.

Local Market Update

May 2015

Moanalua - Salt Lake

1-1-1

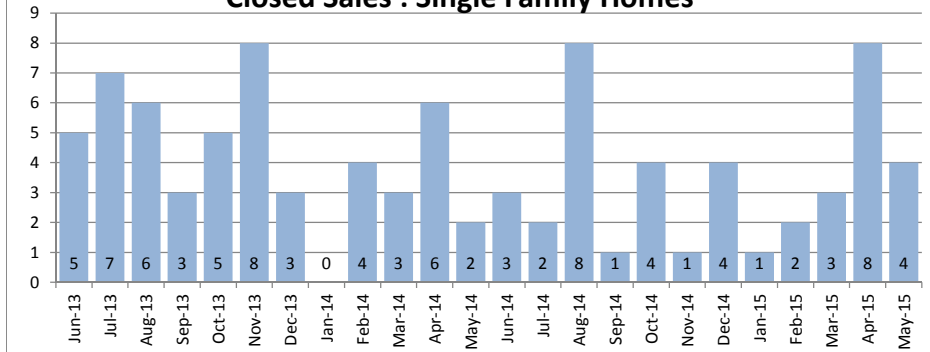


May 2015

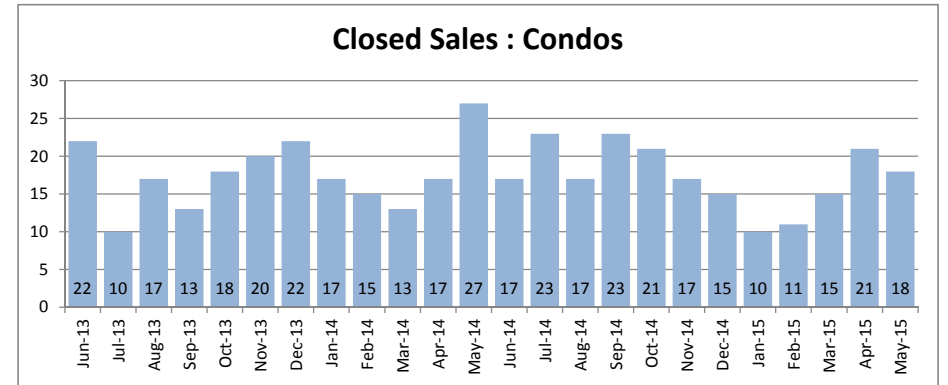
Single Family Homes	May			Year to Date		
	2015	2014	Change	2015	2014	Change
New Listings	2	7	-71%	24	27	-11%
Closed Sales	4	2	100%	18	15	20%
Median Sales Price	\$847,000	\$867,000	-2%	\$732,500	\$768,000	-5%
Percent of Original List Price Received	92.9%	98.3%	-5%	97.0%	93.1%	4%
Median Days on Market Until Sale	12	25	-52%	12	28	-57%
Inventory of Homes for Sale	8	16	-50%	-	-	-

Condos	May			Year to Date		
	2015	2014	Change	2015	2014	Change
New Listings	21	12	75%	125	100	25%
Closed Sales	18	27	-33%	77	90	-14%
Median Sales Price	\$319,000	\$288,000	11%	\$320,000	\$294,500	9%
Percent of Original List Price Received	98.3%	99.3%	-1%	98.5%	98.3%	0%
Median Days on Market Until Sale	12	33	-64%	17	32	-47%
Inventory of Homes for Sale	45	51	-12%	-	-	-

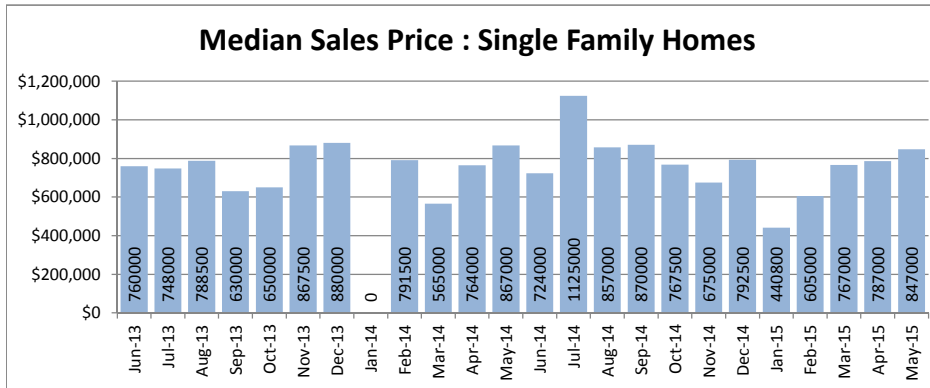
Closed Sales : Single Family Homes



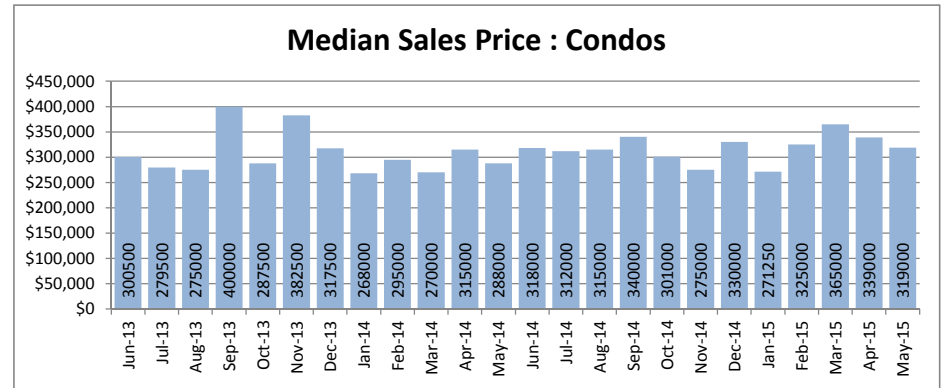
Closed Sales : Condos



Median Sales Price : Single Family Homes



Median Sales Price : Condos



SOURCE: Honolulu Board of REALTORS®, compiled from MLS data.

Local Market Update

May 2015



North Shore

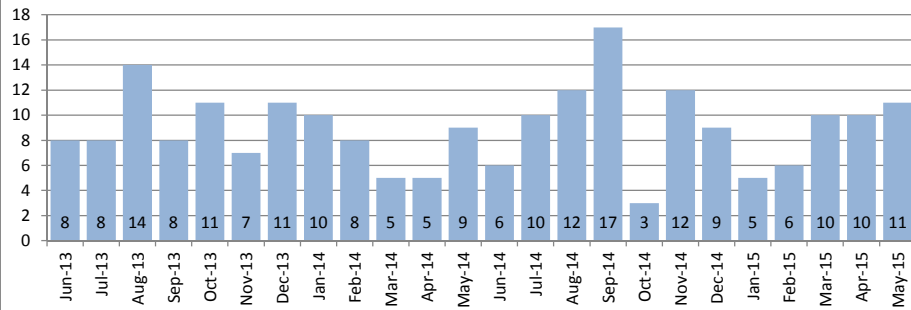
1-5-6 to 1-6-9

May 2015

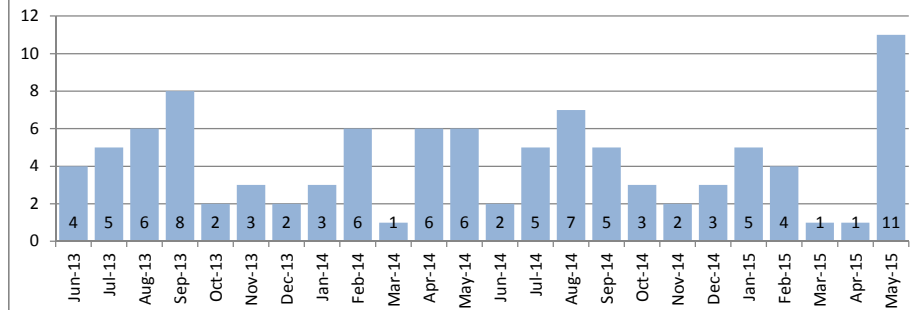
Single Family Homes	May			Year to Date		
	2015	2014	Change	2015	2014	Change
New Listings	12	15	-20%	85	73	16%
Closed Sales	11	9	22%	42	36	17%
Median Sales Price	\$650,000	\$687,500	-5%	\$752,500	\$799,500	-6%
Percent of Original List Price Received	89.7%	105.8%	-15%	95.3%	98.2%	-3%
Median Days on Market Until Sale	11	78	-86%	32	22	45%
Inventory of Homes for Sale	74	65	14%	-	-	-

Condos	May			Year to Date		
	2015	2014	Change	2015	2014	Change
New Listings	5	5	0%	32	29	10%
Closed Sales	11	6	83%	22	22	0%
Median Sales Price	\$401,000	\$380,000	6%	\$398,500	\$316,250	26%
Percent of Original List Price Received	97.8%	98.7%	-1%	98.4%	97.5%	1%
Median Days on Market Until Sale	55	18	206%	56	72	-22%
Inventory of Homes for Sale	25	21	19%	-	-	-

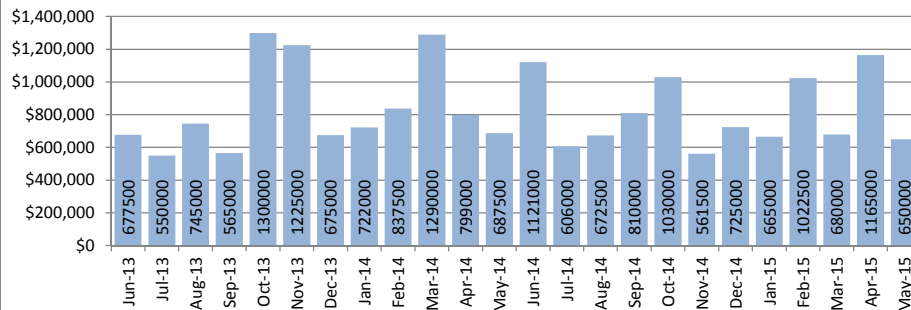
Closed Sales : Single Family Homes



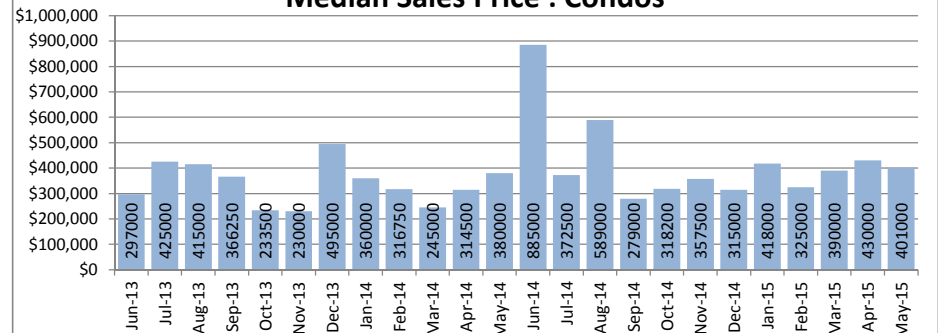
Closed Sales : Condos



Median Sales Price : Single Family Homes



Median Sales Price : Condos



SOURCE: Honolulu Board of REALTORS®, compiled from MLS data.

Local Market Update

May 2015

Pearl City - Aiea

1-9-6 to 1-9-9

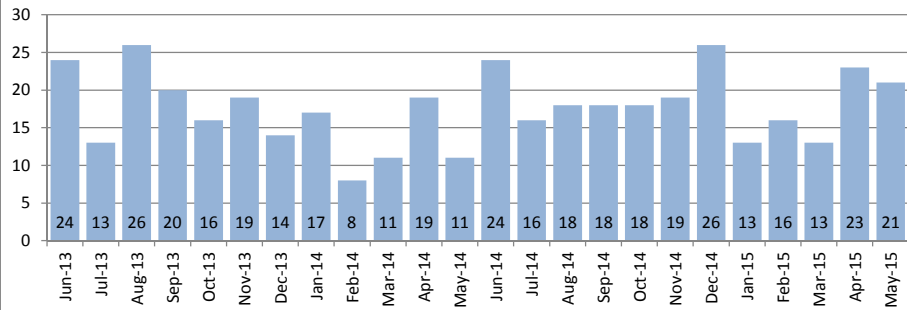


May 2015

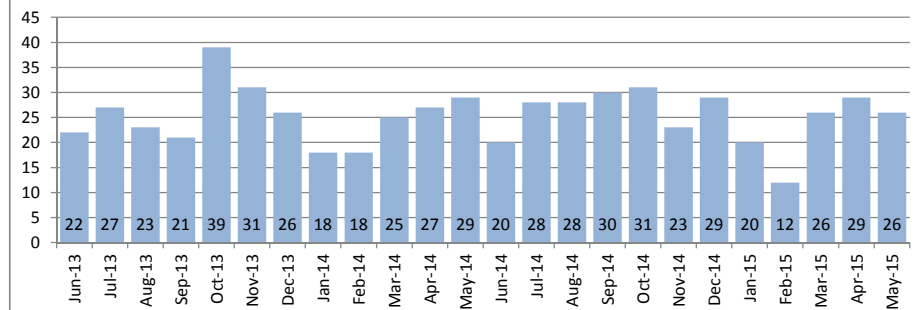
Single Family Homes	May			Year to Date		
	2015	2014	Change	2015	2014	Change
New Listings	25	25	0%	122	105	16%
Closed Sales	21	11	91%	87	70	24%
Median Sales Price	\$645,000	\$625,000	3%	\$640,000	\$625,000	2%
Percent of Original List Price Received	97.9%	98.4%	-1%	98.5%	100.4%	-2%
Median Days on Market Until Sale	14	22	-36%	22	22	0%
Inventory of Homes for Sale	64	45	42%	-	-	-

Condos	May			Year to Date		
	2015	2014	Change	2015	2014	Change
New Listings	23	34	-32%	151	149	1%
Closed Sales	26	29	-10%	115	119	-3%
Median Sales Price	\$340,000	\$340,000	0%	\$330,000	\$320,000	3%
Percent of Original List Price Received	99.0%	97.1%	2%	95.1%	97.9%	-3%
Median Days on Market Until Sale	33	19	74%	17	21	-19%
Inventory of Homes for Sale	69	83	-17%	-	-	-

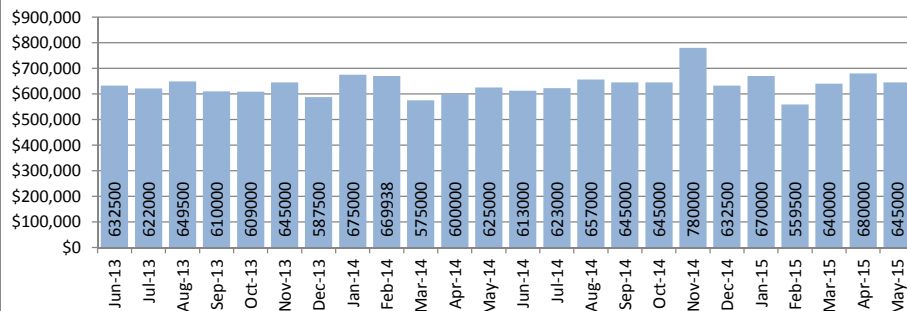
Closed Sales : Single Family Homes



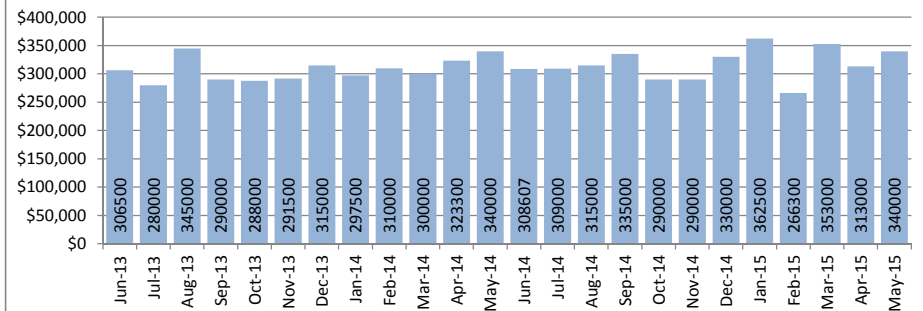
Closed Sales : Condos



Median Sales Price : Single Family Homes



Median Sales Price : Condos



SOURCE: Honolulu Board of REALTORS®, compiled from MLS data.

Local Market Update

May 2015



Wahiawa

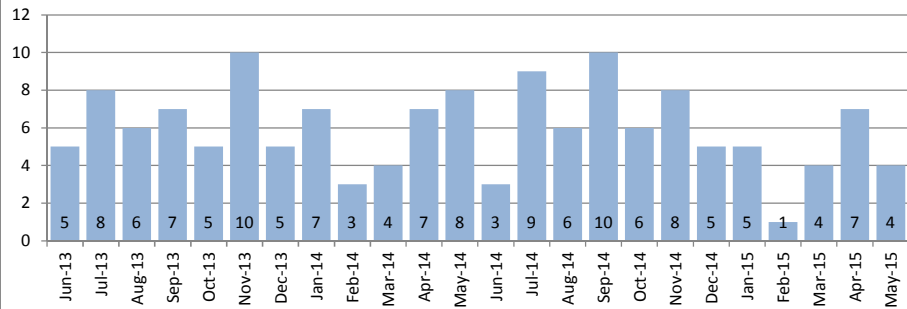
1-7-1 to 1-7-7

May 2015

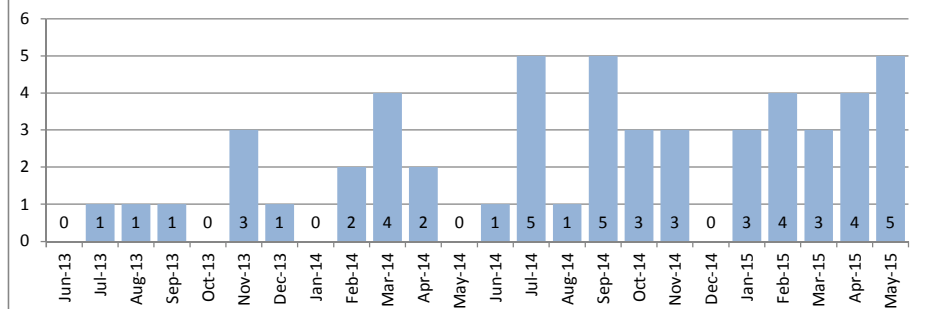
Single Family Homes	May			Year to Date		
	2015	2014	Change	2015	2014	Change
New Listings	8	8	0%	39	38	3%
Closed Sales	4	8	-50%	21	29	-28%
Median Sales Price	\$517,500	\$459,500	13%	\$500,000	\$464,000	8%
Percent of Original List Price Received	97.8%	92.5%	6%	100.0%	94.9%	5%
Median Days on Market Until Sale	37	58	-36%	27	41	-34%
Inventory of Homes for Sale	19	26	-27%	-	-	-

Condos	May			Year to Date		
	2015	2014	Change	2015	2014	Change
New Listings	4	4	0%	22	14	57%
Closed Sales	5	0	-	19	8	138%
Median Sales Price	\$135,100	\$0	-	\$144,000	\$137,000	5%
Percent of Original List Price Received	98.6%	0.0%	-	97.0%	89.8%	8%
Median Days on Market Until Sale	44	0	-	20	19	5%
Inventory of Homes for Sale	13	9	44%	-	-	-

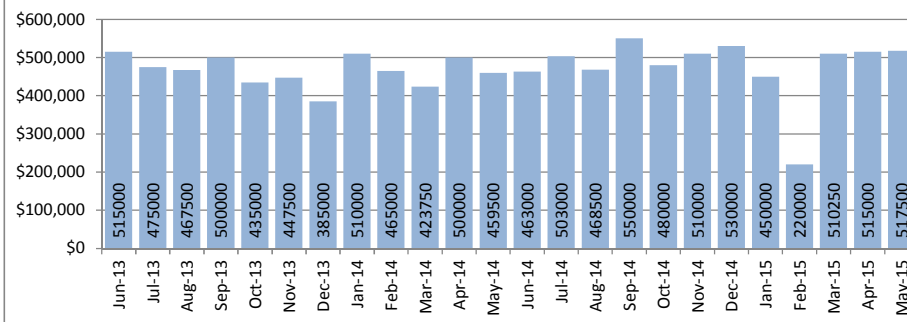
Closed Sales : Single Family Homes



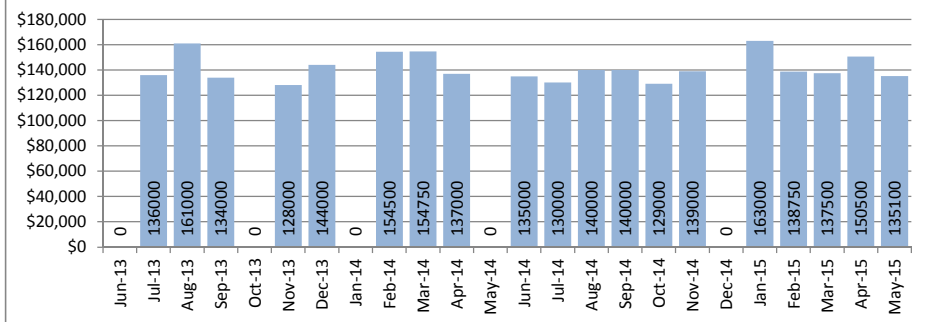
Closed Sales : Condos



Median Sales Price : Single Family Homes



Median Sales Price : Condos



SOURCE: Honolulu Board of REALTORS®, compiled from MLS data.

Local Market Update

May 2015



Waialae - Kahala

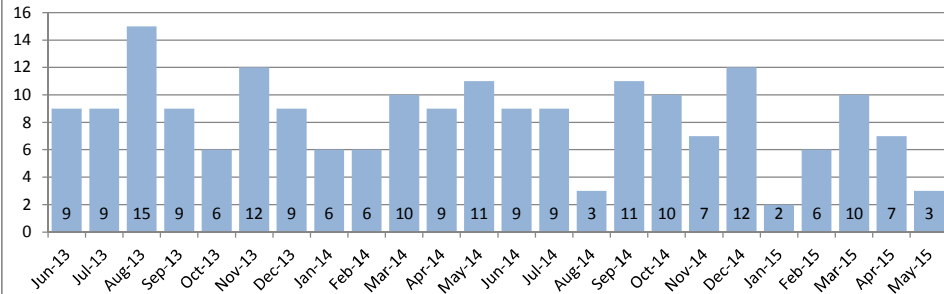
1-3-5

May 2015

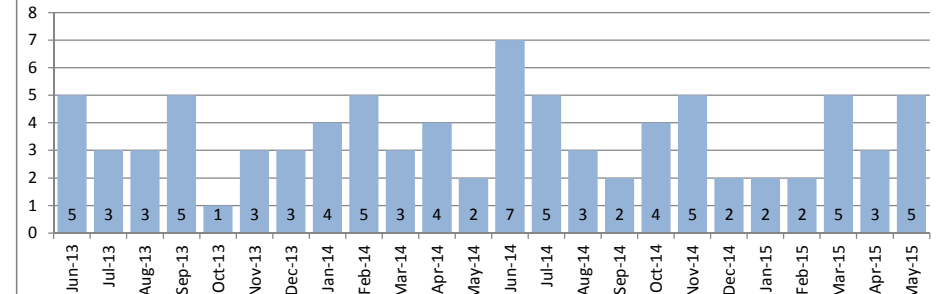
Single Family Homes	May			Year to Date		
	2015	2014	Change	2015	2014	Change
New Listings	18	14	29%	84	77	9%
Closed Sales	3	11	-73%	29	43	-33%
Median Sales Price	\$4,590,000	\$1,460,000	214%	\$1,825,000	\$1,755,000	4%
Percent of Original List Price Received	100.0%	106.2%	-6%	98.6%	93.6%	5%
Median Days on Market Until Sale	8	13	-38%	15	19	-21%
Inventory of Homes for Sale	77	64	20%	-	-	-

Condos	May			Year to Date		
	2015	2014	Change	2015	2014	Change
New Listings	6	8	-25%	27	24	13%
Closed Sales	5	2	150%	16	18	-11%
Median Sales Price	\$530,000	\$546,500	-3%	\$532,500	\$491,500	8%
Percent of Original List Price Received	101.0%	109.5%	-8%	100.5%	100.5%	0%
Median Days on Market Until Sale	5	11	-55%	13	28	-54%
Inventory of Homes for Sale	15	18	-17%	-	-	-

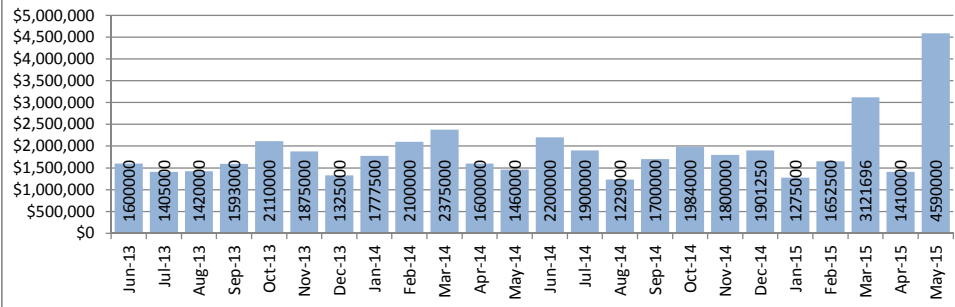
Closed Sales : Single Family Homes



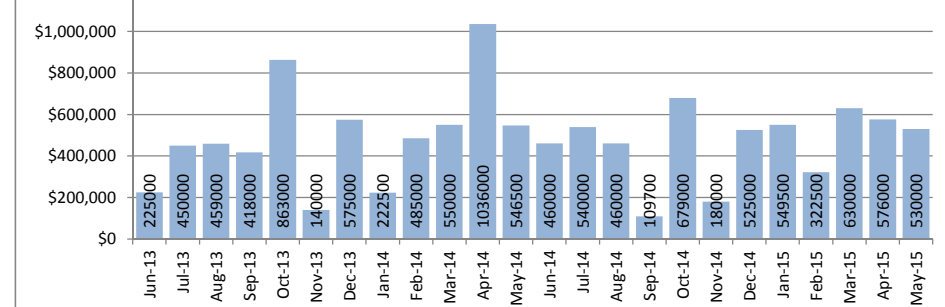
Closed Sales : Condos



Median Sales Price : Single Family Homes



Median Sales Price : Condos



SOURCE: Honolulu Board of REALTORS®, compiled from MLS data.

Local Market Update

May 2015

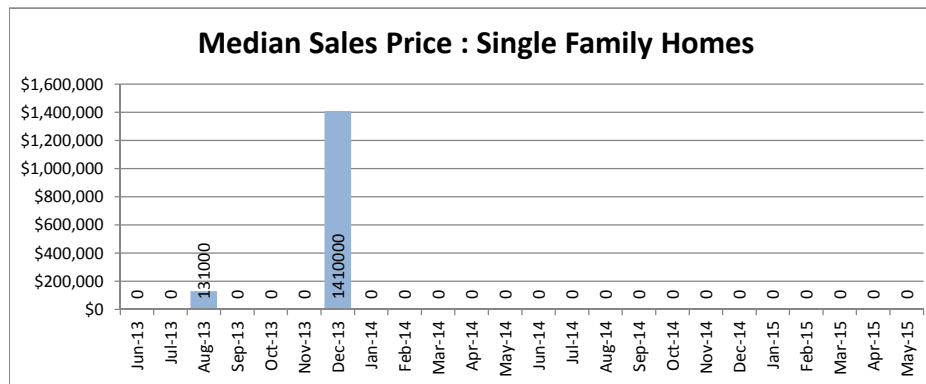
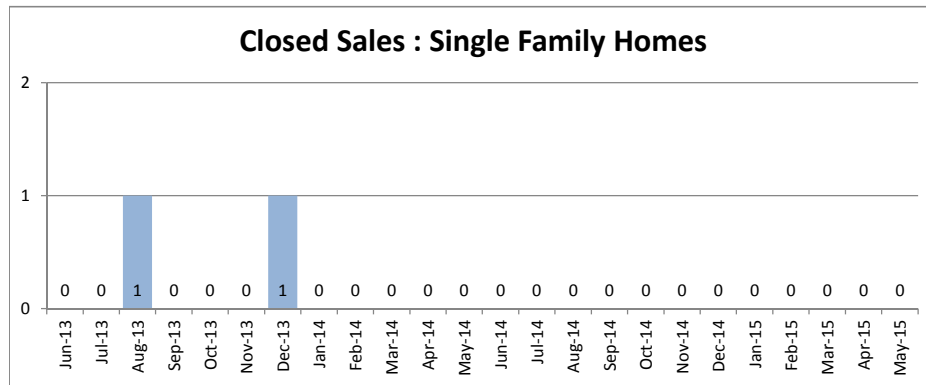


Waikiki

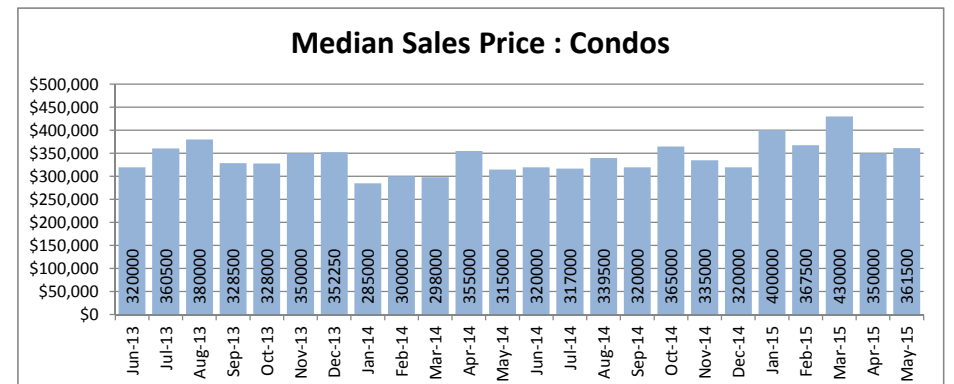
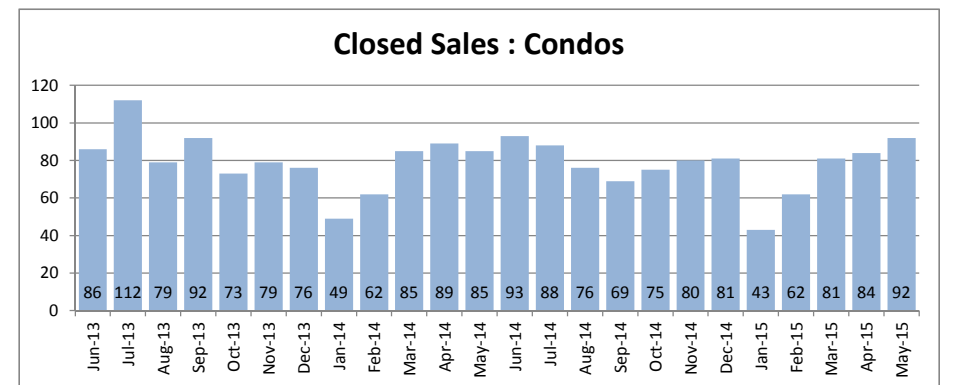
1-2-6

May 2015

Single Family Homes	May			Year to Date		
	2015	2014	Change	2015	2014	Change
New Listings	1	0	-	1	0	-
Closed Sales	0	0	-	0	0	-
Median Sales Price	\$0	\$0	-	\$0	\$0	-
Percent of Original List Price Received	0.0%	0.0%	-	0.0%	0.0%	-
Median Days on Market Until Sale	0	0	-	0	0	-
Inventory of Homes for Sale	1	0	-	-	-	-



Condos	May			Year to Date		
	2015	2014	Change	2015	2014	Change
New Listings	119	137	-13%	716	680	5%
Closed Sales	92	85	8%	364	373	-2%
Median Sales Price	\$361,500	\$315,000	15%	\$375,000	\$320,000	17%
Percent of Original List Price Received	93.9%	96.9%	-3%	96.3%	94.7%	2%
Median Days on Market Until Sale	35	29	21%	40	30	33%
Inventory of Homes for Sale	550	497	11%	-	-	-



SOURCE: Honolulu Board of REALTORS®, compiled from MLS data.

Local Market Update

May 2015



Waipahu

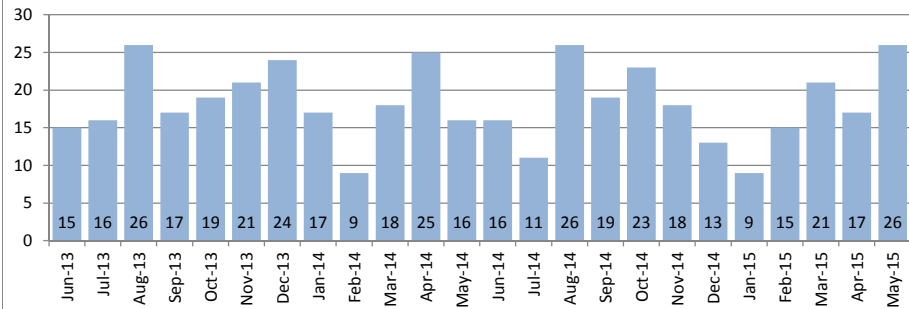
1-9-4

May 2015

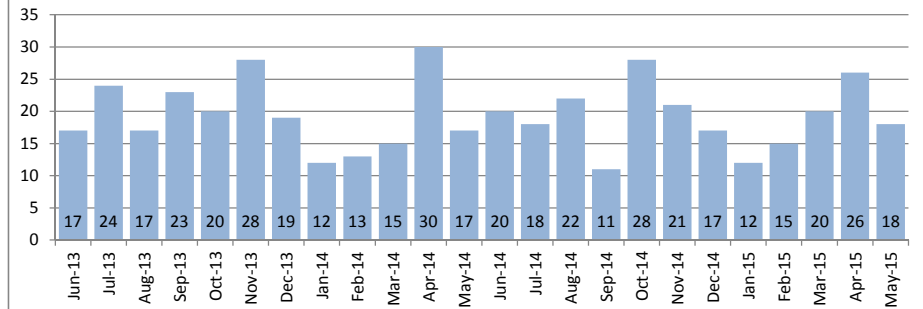
Single Family Homes	May			Year to Date		
	2015	2014	Change	2015	2014	Change
New Listings	30	26	15%	115	124	-7%
Closed Sales	26	16	63%	88	86	2%
Median Sales Price	\$583,000	\$582,500	0%	\$581,000	\$579,000	0%
Percent of Original List Price Received	97.2%	97.2%	0%	97.0%	99.0%	-2%
Median Days on Market Until Sale	17	29	-41%	24	24	0%
Inventory of Homes for Sale	63	65	-3%	-	-	-

Condos	May			Year to Date		
	2015	2014	Change	2015	2014	Change
New Listings	29	20	45%	121	111	9%
Closed Sales	18	17	6%	91	83	10%
Median Sales Price	\$312,500	\$295,000	6%	\$316,000	\$300,000	5%
Percent of Original List Price Received	100.8%	102.4%	-2%	97.2%	100.0%	-3%
Median Days on Market Until Sale	15	19	-21%	15	19	-21%
Inventory of Homes for Sale	48	49	-2%	-	-	-

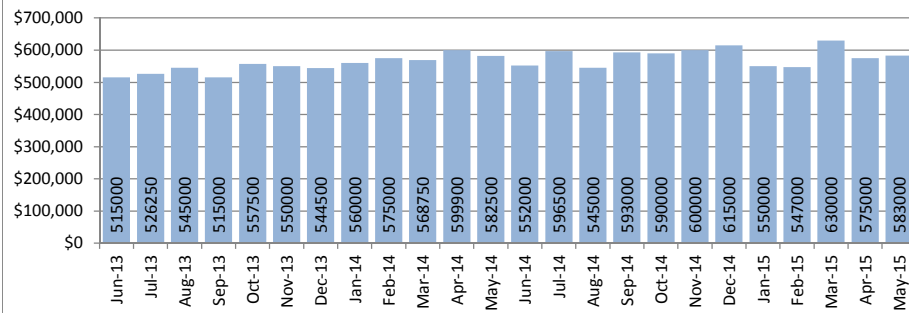
Closed Sales : Single Family Homes



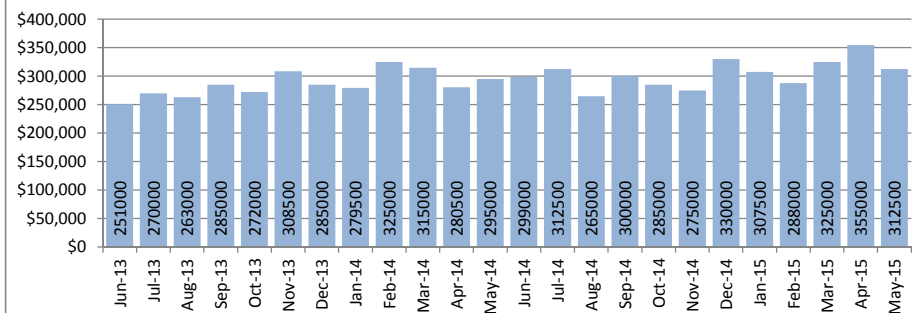
Closed Sales : Condos



Median Sales Price : Single Family Homes



Median Sales Price : Condos



SOURCE: Honolulu Board of REALTORS® , compiled from MLS data.

Local Market Update

May 2015



Windward Coast

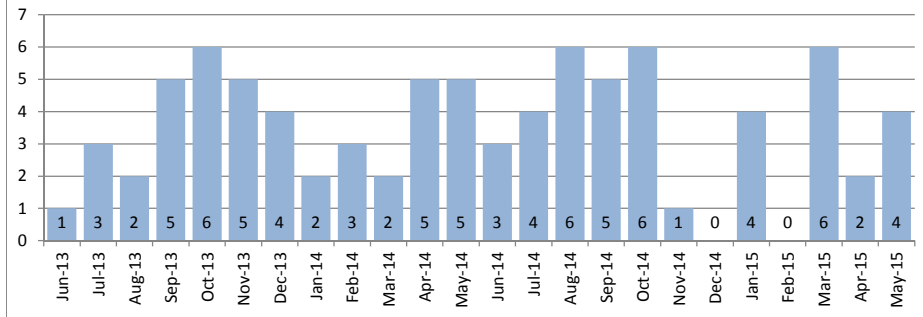
1-4-8 to 1-5-5

May 2015

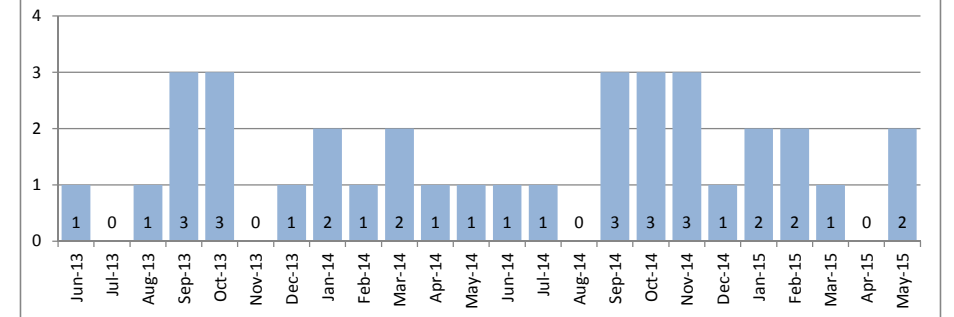
Single Family Homes	May			Year to Date		
	2015	2014	Change	2015	2014	Change
New Listings	6	8	-25%	31	46	-33%
Closed Sales	4	5	-20%	16	14	14%
Median Sales Price	\$720,000	\$560,000	29%	\$667,500	\$674,163	-1%
Percent of Original List Price Received	90.7%	97.4%	-7%	92.2%	95.6%	-4%
Median Days on Market Until Sale	123	24	413%	57	25	128%
Inventory of Homes for Sale	32	57	-44%	-	-	-

Condos	May			Year to Date		
	2015	2014	Change	2015	2014	Change
New Listings	1	6	-83%	21	14	50%
Closed Sales	2	1	100%	7	7	0%
Median Sales Price	\$80,500	\$85,000	-5%	\$197,000	\$205,000	-4%
Percent of Original List Price Received	88.5%	100.0%	-12%	100.0%	100.0%	0%
Median Days on Market Until Sale	83	67	24%	39	67	-42%
Inventory of Homes for Sale	20	14	43%	-	-	-

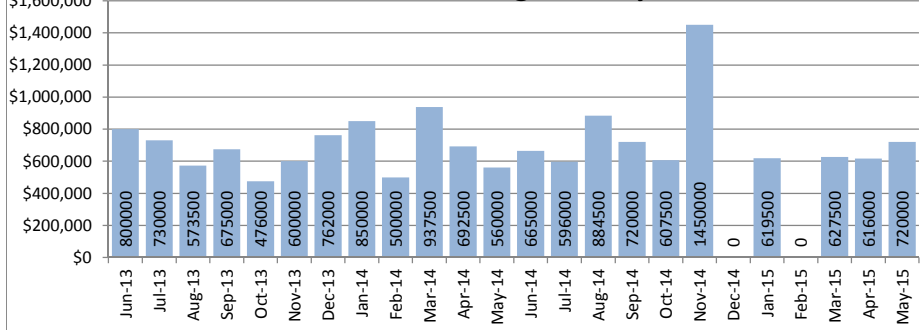
Closed Sales : Single Family Homes



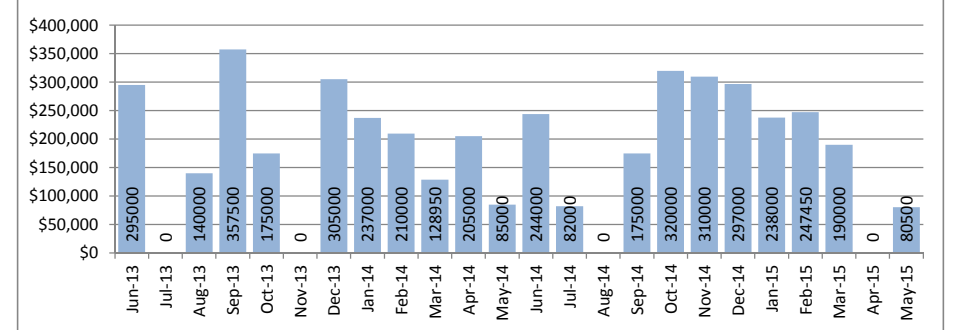
Closed Sales : Condos



Median Sales Price : Single Family Homes



Median Sales Price : Condos



SOURCE: Honolulu Board of REALTORS®, compiled from MLS data.

Single Family Solds - May 2015 vs 2014 (Based on region and neighborhood groupings as listed in MLS) - Page 1 of 4

Central Region	2014 Median	2015 Median	+/-	+/-	2014 Sold	2015 Sold	+/-	+/-
LAUNANI VALLEY	\$ 521,500	-	-	-	2	-	-	-
MILILANI AREA	\$ 650,000	\$ 669,500	3.0%	\$19,500	13	16	23.1%	3
MILILANI MAUKA	\$ 767,500	\$ 793,500	3.4%	\$26,000	14	6	-57.1%	-8
WAHIAWA AREA	\$ 437,500	\$ 595,000	36.0%	\$157,500	6	1	-83.3%	-5
WAIPIO ACRES/WAIKALANI HEIGHTS	\$ 720,000	-	-	-	1	-	-	-
WAHIAWA HEIGHTS	\$ 494,500	\$ 440,000	-11.0%	-\$54,500	2	3	50.0%	1
Central Region	\$ 650,000	\$ 681,500	4.8%	\$31,500	38	26	-31.6%	-12
Diamond Hd Region	2014 Median	2015 Median	+/-	+/-	2014 Sold	2015 Sold	+/-	+/-
AINA HAINA AREA	\$ 875,000	\$ 785,000	-10.3%	-\$90,000	3	1	-66.7%	-2
AINA HAINA BEACH	-	\$ 880,000	-	-	-	1	-	-
DIAMOND HEAD	\$ 1,999,999	\$ 2,135,000	6.8%	\$135,001	3	2	-33.3%	-1
HAWAII LOA RIDGE	\$ 3,025,000	\$ 4,250,000	40.5%	\$1,225,000	3	3	0.0%	0
KAHALA AREA	\$ 1,650,000	\$ 4,590,000	178.2%	\$2,940,000	3	1	-66.7%	-2
KAHALA KUA	\$ 2,412,000	-	-	-	1	-	-	-
KAHALA-PUUPANINI	-	\$ 1,450,000	-	-	-	1	-	-
KAIMUKI	\$ 993,000	\$ 870,000	-12.4%	-\$123,000	6	9	50.0%	3
KALANI IKI	\$ 390,000	-	-	-	1	-	-	-
KAPAHULU	\$ 820,000	\$ 930,000	13.4%	\$110,000	1	7	600.0%	6
KULIOUOU	\$ 1,650,000	-	-	-	1	-	-	-
MAUNALANI HEIGHTS	\$ 945,000	\$ 963,000	1.9%	\$18,000	2	1	-50.0%	-1
NIU BEACH	-	\$ 3,500,000	-	-	-	1	-	-
NIU VALLEY	-	\$ 1,100,000	-	-	-	1	-	-
PALOLO	\$ 690,750	\$ 777,000	12.5%	\$86,250	4	3	-25.0%	-1
ST. LOUIS	\$ 821,000	\$ 950,000	15.7%	\$129,000	1	3	200.0%	2
WAIALAE G/C	-	\$ 5,663,000	-	-	-	1	-	-
WAIALAE IKI	\$ 1,625,000	-	-	-	3	-	-	-
WAIALAE NUI RDGE	\$ 1,460,000	-	-	-	1	-	-	-
WAIALAE NUI-LWR	\$ 857,500	\$ 1,080,000	25.9%	\$222,500	2	1	-50.0%	-1
WAIALAE AREA	-	\$ 1,600,000	-	-	-	1	-	-
WILHELMINA	\$ 980,000	\$ 1,000,000	2.0%	\$20,000	3	3	0.0%	0
Diamond Hd Region	\$ 1,068,000	\$ 947,500	-11.3%	-\$120,500	38	40	5.3%	2
Hawaii Kai Region	2014 Median	2015 Median	+/-	+/-	2014 Sold	2015 Sold	+/-	+/-
ANCHORAGE	-	\$ 3,000,000	-	-	-	1	-	-
HAHAIONE-LOWER	\$ 962,500	-	-	-	2	-	-	-
HAHAIONE-UPPER	\$ 1,050,000	-	-	-	1	-	-	-
KALAMA VALLEY	\$ 744,500	\$ 981,000	31.8%	\$236,500	2	1	-50.0%	-1
KAMILOIKI	\$ 817,000	-	-	-	2	-	-	-
KOKO VILLAS	-	\$ 1,350,000	-	-	-	1	-	-
KOKO HEAD TERRAC	\$ 835,000	\$ 870,000	4.2%	\$35,000	4	1	-75.0%	-3
KOKO KAI	\$ 3,000,000	-	-	-	1	-	-	-
LUNA KAI	\$ 3,200,000	\$ 1,500,000	-53.1%	-\$1,700,000	1	1	0.0%	0
MARINERS VALLEY	\$ 935,000	\$ 838,000	-10.4%	-\$97,000	3	4	33.3%	1
MARINERS COVE	-	\$ 1,672,500	-	-	-	2	-	-
PORTLOCK	-	\$ 2,700,000	-	-	-	1	-	-
WEST MARINA	\$ 1,235,000	\$ 1,360,000	10.1%	\$125,000	3	2	-33.3%	-1
TRIANGLE	\$ 1,676,000	\$ 1,643,375	-1.9%	-\$32,625	2	4	100.0%	2
Hawaii Kai Region	\$ 935,000	\$ 1,467,500	57.0%	\$532,500	21	18	-14.3%	-3

Single Family Solds - May 2015 vs 2014 (Based on region and neighborhood groupings as listed in MLS) - Page 2 of 4

Leeward Region	2014 Median	2015 Median	+/-	+/-	2014 Sold	2015 Sold	+/-	+/-
LUALUALEI	\$ 290,000	\$ 346,000	19.3%	\$56,000	4	5	25.0%	1
MAILI	\$ 357,000	\$ 330,000	-7.6%	-\$27,000	6	11	83.3%	5
MAILI SEA-MAKALAE 1	\$ 460,000	\$ 445,000	-3.3%	-\$15,000	3	1	-66.7%	-2
MAILI SEA-NOHOKAI	\$ 484,250	\$ 525,000	8.4%	\$40,750	1	1	0.0%	0
MAKAHA	\$ 299,875	\$ 385,000	28.4%	\$85,125	4	7	75.0%	3
WAIANAE	\$ 281,000	\$ 409,251	45.6%	\$128,251	3	4	33.3%	1
Leeward Region	\$ 300,000	\$ 385,000	28.3%	\$85,000	21	29	38.1%	8
Ewa Plain Region	2014 Median	2015 Median	+/-	+/-	2014 Sold	2015 Sold	+/-	+/-
EWA BEACH	\$ 460,000	\$ 435,000	-5.4%	-\$25,000	3	1	-66.7%	-2
EWA GEN CYPRESS POINT	\$ 1,099,000	-	-	-	1	-	-	-
EWA GEN ALII COURT	-	\$ 437,000	-	-	-	3	-	-
EWA GEN ALII COVE	-	\$ 420,000	-	-	-	1	-	-
EWA GEN CARRIAGES	\$ 695,000	-	-	-	1	-	-	-
EWA GEN KULA LEI	\$ 487,000	\$ 625,000	28.3%	\$138,000	1	1	0.0%	0
EWA GEN LAS BRISAS	\$ 444,000	\$ 437,500	-1.5%	-\$6,500	3	2	-33.3%	-1
EWA GEN LAULANI-TIDES	\$ 470,000	\$ 503,750	7.2%	\$33,750	3	2	-33.3%	-1
EWA GEN LAULANI-TRADES	-	\$ 510,000	-	-	-	1	-	-
EWA GEN MONTECITO/TUSCANY	\$ 440,000	\$ 485,000	10.2%	\$45,000	1	3	200.0%	2
EWA GEN LOMBARD WAY	\$ 380,000	\$ 415,000	9.2%	\$35,000	1	1	0.0%	0
EWA GEN MERIDIAN	-	\$ 545,000	-	-	-	1	-	-
EWA GEN PRESCOTT	\$ 635,000	\$ 683,500	7.6%	\$48,500	2	1	-50.0%	-1
EWA GEN SANDALWOOD	\$ 640,000	\$ 695,000	8.6%	\$55,000	1	1	0.0%	0
EWA GEN SUMMERHILL	\$ 552,000	-	-	-	1	-	-	-
EWA GEN SUN TERRA	-	\$ 505,500	-	-	-	1	-	-
EWA GEN SUN TERRA SOUTH	\$ 475,000	-	-	-	1	-	-	-
EWA GEN TERRAZZA	-	\$ 508,000	-	-	-	2	-	-
EWA GEN TIBURON	\$ 505,000	-	-	-	3	-	-	-
EWA GEN TUSCANY II	\$ 509,000	-	-	-	1	-	-	-
EWA VILLAGES	\$ 424,900	\$ 562,500	32.4%	\$137,600	5	2	-60.0%	-3
HOAKALEI-KA MAKANA	\$ 600,000	\$ 688,000	14.7%	\$88,000	5	4	-20.0%	-1
HOAKALEI-KIPUKA	-	\$ 670,000	-	-	-	1	-	-
KAPOLEI-KEKUILANI	\$ 490,000	\$ 565,000	15.3%	\$75,000	1	1	0.0%	0
HUELANI	-	\$ 625,000	-	-	-	1	-	-
KAPOLEI	-	\$ 501,000	-	-	-	4	-	-
KAPOLEI-KAI	\$ 547,500	-	-	-	2	-	-	-
KAPOLEI-IWALANI	\$ 615,000	-	-	-	1	-	-	-
KAPOLEI-KNOLLS	\$ 679,000	\$ 685,000	0.9%	\$6,000	1	4	300.0%	3
LEEWARD ESTATES	\$ 445,000	\$ 420,000	-5.6%	-\$25,000	1	1	0.0%	0
OCEAN POINTE	\$ 599,999	\$ 677,500	12.9%	\$77,501	11	4	-63.6%	-7
WESTLOCH FAIRWAY	\$ 515,000	\$ 575,000	11.7%	\$60,000	4	1	-75.0%	-3
WESTLOCH ESTATES	\$ 490,000	\$ 580,000	18.4%	\$90,000	1	1	0.0%	0
Ewa Plain Region	\$ 537,000	\$ 555,000	3.4%	\$18,000	55	45	-18.2%	-10
Makakilo Region	2014 Median	2015 Median	+/-	+/-	2014 Sold	2015 Sold	+/-	+/-
MAKAKILO-ANUHEA	\$ 604,000	\$ 715,000	18.4%	\$111,000	4	1	-75.0%	-3
MAKAKILO-HIGHLANDS	-	\$ 635,000	-	-	-	1	-	-
MAKAKILO-KAHIWELO	-	\$ 705,000	-	-	-	1	-	-
MAKAKILO-KUMULANI	-	\$ 1,100,000	-	-	-	1	-	-
MAKAKILO-UPPER	-	\$ 608,500	-	-	-	2	-	-
MAKAKILO-LOWER	\$ 464,000	\$ 625,000	34.7%	\$161,000	2	5	150.0%	3
MAKAKILO-STARSEDGE	-	\$ 715,000	-	-	-	1	-	-
MAKAKILO-ROYAL RIDGE	\$ 690,000	-	-	-	1	-	-	-
MAKAKILO-UPPER	\$ 540,000	-	-	-	1	-	-	-
MAKAKILO-WAI KALOI	\$ 687,500	\$ 746,500	8.6%	\$59,000	2	2	0.0%	0
MAKAKILO-WEST HILLS	\$ 634,000	\$ 805,000	27.0%	\$171,000	2	2	0.0%	0
Makakilo Region	\$ 604,000	\$ 672,500	11.3%	\$68,500	12	16	33.3%	4

Single Family Solds - May 2015 vs 2014 (Based on region and neighborhood groupings as listed in MLS) - Page 3 of 4

Kailua Region	2014 Median	2015 Median	+/-	+/-	2014 Sold	2015 Sold	+/-	+/-
AIKAHI PARK	-	1117000	-	-	-	1	-	-
BEACHSIDE	\$ 2,498,000	\$ 2,000,000	-19.9%	-\$498,000	3	3	0.0%	0
COCONUT GROVE	\$ 709,000	\$ 730,000	3.0%	\$21,000	6	5	-16.7%	-1
ENCHANTED LAKE	\$ 900,000	\$ 1,072,500	19.2%	\$172,500	5	4	-20.0%	-1
KAILUA ESTATES	-	\$ 1,282,500	-	-	-	2	-	-
KAIMALINO	-	\$ 1,800,000	-	-	-	3	-	-
KALAMA TRACT	\$ 1,325,000	-	-	-	1	-	-	-
KALAMA/CNUT GROV	\$ 999,950	\$ 1,250,000	25.0%	\$250,050	3	1	-66.7%	-2
KALAEHO HILLSIDE	\$ 890,000	\$ 871,000	-2.1%	-\$19,000	1	1	0.0%	0
KAWAILOA	\$ 1,550,000	-	-	-	1	-	-	-
KAOPA	\$ 861,000	\$ 1,170,000	35.9%	\$309,000	1	1	0.0%	0
KEOLU HILLS	\$ 837,500	-	-	-	1	-	-	-
KOOLAUPOKO	\$ 1,012,500	-	-	-	2	-	-	-
KUULEI TRACT	\$ 1,745,000	-	-	-	1	-	-	-
LANIKAI	\$ 3,060,000	\$ 1,750,000	-42.8%	-\$1,310,000	5	2	-60.0%	-3
MAUNAWILI	\$ 925,000	-	-	-	1	-	-	-
POHAKUPU	-	\$ 950,000	-	-	-	1	-	-
WAIMANALO	\$ 1,012,500	\$ 660,000	-34.8%	-\$352,500	4	1	-75.0%	-3
Kailua Region	\$ 1,006,225	\$ 1,170,000	16.3%	\$163,775	35	25	-28.6%	-10
Pearl City Region	2014 Median	2015 Median	+/-	+/-	2014 Sold	2015 Sold	+/-	+/-
AIEA HEIGHTS	\$ 687,000	\$ 792,750	15.4%	\$105,750	5	2	-60.0%	-3
FOSTER VILLAGE	\$ 638,000	\$ 850,000	33.2%	\$212,000	2	1	-50.0%	-1
HALAWA	-	\$ 639,000	-	-	-	3	-	-
HALAWA HEIGHTS	-	\$ 645,000	-	-	-	1	-	-
MOMILANI	-	\$ 600,000	-	-	-	1	-	-
NEWTOWN	\$ 560,000	-	-	-	1	-	-	-
PACIFIC PALISADES	\$ 495,000	\$ 547,500	10.6%	\$52,500	2	5	150.0%	3
PEARL CITY-UPPER	\$ 650,000	\$ 645,000	-0.8%	-\$5,000	1	4	300.0%	3
PEARLRIDGE	-	\$ 1,232,500	-	-	-	2	-	-
WAILUNA	-	\$ 775,000	-	-	-	1	-	-
WAIMALU	-	\$ 540,000	-	-	-	1	-	-
Pearl City Region	\$ 625,000	\$ 645,000	3.2%	\$20,000	11	21	90.9%	10
Kaneohe Region	2014 Median	2015 Median	+/-	+/-	2014 Sold	2015 Sold	+/-	+/-
AHUIMANU AREA	\$ 773,750	-	-	-	2	-	-	-
AHAOLELO	-	\$ 925,000	-	-	-	1	-	-
BAY VIEW ESTATES	-	\$ 745,000	-	-	-	1	-	-
BAY VIEW GARDEN	\$ 1,025,000	-	-	-	1	-	-	-
CLUB VIEW ESTATE	\$ 850,000	-	-	-	2	-	-	-
HAIKU KNOLLS	\$ 707,500	-	-	-	2	-	-	-
HAIKU PLANTATION	-	\$ 1,400,000	-	-	-	1	-	-
HAIKU VILLAGE	\$ 729,000	\$ 655,000	-10.2%	-\$74,000	1	1	0.0%	0
HEEIA VIEW	\$ 698,000	-	-	-	1	-	-	-
HALE KOU	-	\$ 808,000	-	-	-	1	-	-
HALEKAUWILA	\$ 799,000	\$ 525,000	-34.3%	-\$274,000	1	1	0.0%	0
HAUULA	\$ 447,500	\$ 794,500	77.5%	\$347,000	4	2	-50.0%	-2
KAAAWA	-	\$ 565,000	-	-	-	1	-	-
KANEOHE HEIGHTS	\$ 790,000	-	-	-	1	-	-	-
KANEOHE BAY	-	\$ 1,225,000	-	-	-	1	-	-
KANEOHE TOWN	\$ 655,000	\$ 647,500	-1.1%	-\$7,500	1	2	100.0%	1
LULANI OCEAN	\$ 1,250,000	\$ 900,000	-28.0%	-\$350,000	1	1	0.0%	0
MAHINUI	\$ 1,115,000	\$ 720,000	-35.4%	-\$395,000	1	1	0.0%	0
PIKOILOA	-	\$ 738,000	-	-	-	1	-	-
WAIKALUA	\$ 550,000	\$ 915,000	66.4%	\$365,000	1	2	100.0%	1
PUOHALA VILLAGE	\$ 700,000	-	-	-	1	-	-	-
WOODRIDGE	\$ 525,000	-	-	-	1	-	-	-
Kaneohe Region	\$ 730,000	\$ 745,000	2.1%	\$15,000	21	17	-19.0%	-4

Single Family Solds - May 2015 vs 2014 (Based on region and neighborhood groupings as listed in MLS) - Page 4 of 4

North Shore Region	2014 Median	2015 Median	+/-	+/-	2014 Sold	2015 Sold	+/-	+/-
KAHUKU	\$ 400,000	\$ 507,500	26.9%	\$107,500	2	2	0.0%	0
LAIE	\$ 715,000	\$ 750,000	4.9%	\$35,000	1	1	0.0%	0
METCALF ACRES	\$ 550,000	-	-	-	1	-	-	-
PUPUKEA	-	\$ 1,800,000	-	-	-	1	-	-
SUNSET AREA	\$ 1,164,000	\$ 1,145,500	-1.6%	-\$18,500	2	2	0.0%	0
SUNSET/VELZY	\$ 918,750	\$ 575,000	-37.4%	-\$343,750	2	1	-50.0%	-1
WAIALUA	\$ 650,000	\$ 650,000	0.0%	\$0	2	5	150.0%	3
North Shore Region	\$ 701,250	\$ 700,000	-0.2%	-\$1,250	10	12	20.0%	2

Waipahu Region	2014 Median	2015 Median	+/-	+/-	2014 Sold	2015 Sold	+/-	+/-
BUSINESS	\$ 400,000	-	-	-	1	-	-	-
CRESTVIEW	\$ 516,000	\$ 665,000	28.9%	\$149,000	1	1	0.0%	0
ROBINSON HEIGHTS	-	\$ 430,000	-	-	-	1	-	-
ROYAL KUNIA	\$ 620,000	\$ 605,500	-2.3%	-\$14,500	6	5	-16.7%	-1
WAIPAHU ESTATES	-	\$ 590,000	-	-	-	1	-	-
VILLAGE PARK	\$ 575,000	\$ 560,000	-2.6%	-\$15,000	3	5	66.7%	2
WAIKELE	\$ 613,600	\$ 651,000	6.1%	\$37,400	2	2	0.0%	0
WAIPAHU TRIANGLE	-	\$ 550,000	-	-	-	1	-	-
WAIPIO GENTRY	-	\$ 630,000	-	-	-	3	-	-
WAIPAHU-LOWER	\$ 550,000	\$ 515,000	-6.4%	-\$35,000	3	7	133.3%	4
Waipahu Region	\$ 582,500	\$ 583,000	0.1%	\$500	16	26	62.5%	10

Metro Region	2014 Median	2015 Median	+/-	+/-	2014 Sold	2015 Sold	+/-	+/-
ALEWA HEIGHTS	-	\$ 755,000	-	-	-	2	-	-
DOWSETT	\$ 1,450,000	\$ 1,888,000	30.2%	\$438,000	1	1	0.0%	0
KALIHI-LOWER	\$ 650,000	\$ 710,000	9.2%	\$60,000	1	3	200.0%	2
KALIHI VALLEY	\$ 561,500	\$ 755,000	34.5%	\$193,500	2	1	-50.0%	-1
KALIHI-UPPER	-	\$ 730,000	-	-	-	5	-	-
KALIHI UKA	\$ 485,000	-	-	-	1	-	-	-
KAM HEIGHTS	-	\$ 660,000	-	-	-	1	-	-
KAPALAMA	-	\$ 640,000	-	-	-	2	-	-
KAPIOLANI	\$ 1,100,000	-	-	-	1	-	-	-
KUAKINI	\$ 275,000	-	-	-	1	-	-	-
LILIHA	-	\$ 668,000	-	-	-	1	-	-
MAKIKI	\$ 1,443,000	-	-	-	1	-	-	-
MAKIKI AREA	\$ 549,000	-	-	-	1	-	-	-
MAKIKI HEIGHTS	\$ 745,000	\$ 4,800,000	544.3%	\$4,055,000	1	3	200.0%	2
MANOA AREA	\$ 975,000	\$ 1,250,000	28.2%	\$275,000	5	5	0.0%	0
MANOA-WOODLAWN	-	\$ 1,225,000	-	-	-	1	-	-
MOANALUA GARDENS	-	\$ 695,000	-	-	-	1	-	-
MOANALUA VALLEY	-	\$ 799,500	-	-	-	2	-	-
MOILIILI	-	\$ 800,000	-	-	-	1	-	-
NUUANU AREA	\$ 817,500	-	-	-	2	-	-	-
NUUANU-LOWER	\$ 746,000	\$ 2,575,000	245.2%	\$1,829,000	1	2	100.0%	1
OLD PALI	\$ 1,625,000	-	-	-	1	-	-	-
PACIFIC HEIGHTS	\$ 1,888,888	-	-	-	1	-	-	-
PAUOA VALLEY	\$ 835,000	-	-	-	3	-	-	-
PAWAA	-	\$ 1,200,000	-	-	-	1	-	-
PUNAHOU	-	\$ 922,000	-	-	-	1	-	-
TANTALUS	\$ 735,000	-	-	-	2	-	-	-
SALT LAKE	\$ 867,000	\$ 1,075,000	24.0%	\$208,000	2	1	-50.0%	-1
Metro Region	\$ 825,000	\$ 850,000	3.0%	\$25,000	27	34	25.9%	7

Condo Solds - May 2015 vs 2014 (Based on region and neighborhood groupings as listed in MLS) - Page 1 of 3

Central Region	2014 Median	2015 Median	+/-	+/-	2014 Sold	2015 Sold	+/-	+/-
LAUNANI VALLEY	\$ 355,250	\$ 328,000	-7.7%	-\$27,250	2	3	50.0%	1
MILILANI AREA	\$ 309,000	\$ 325,000	5.2%	\$16,000	9	6	-33.3%	-3
MILILANI MAUKA	\$ 420,000	\$ 398,500	-5.1%	-\$21,500	14	10	-28.6%	-4
WAHIWA HEIGHTS	-	\$ 166,275	-	-	-	2	-	-
WILIKINA	-	\$ 105,000	-	-	-	3	-	-
WAIPIO ACRES/WAIKALANI WOOD	\$ 178,000	\$ 198,950	11.8%	\$20,950	7	8	14.3%	1
Central Region	\$ 324,000	\$ 287,000	-11.4%	-\$37,000	32	32	0.0%	0
Diamond Hd Region	2014 Median	2015 Median	+/-	+/-	2014 Sold	2015 Sold	+/-	+/-
DIAMOND HEAD	\$ 513,500	\$ 582,500	13.4%	\$69,000	12	8	-33.3%	-4
KALANI IKI	-	\$ 976,000	-	-	-	1	-	-
KULIOUOU	-	\$ 660,000	-	-	-	1	-	-
PALOLO	-	\$ 420,000	-	-	-	1	-	-
WAIALAE G/C	-	\$ 270,000	-	-	-	1	-	-
WAIALAE NUI VLY	\$ 546,500	\$ 530,000	-3.0%	-\$16,500	2	3	50.0%	1
Diamond Hd Region	\$ 532,500	\$ 540,000	1.4%	\$7,500	14	15	7.1%	1
Ewa Plain Region	2014 Median	2015 Median	+/-	+/-	2014 Sold	2015 Sold	+/-	+/-
AG/INDL/NAVY	\$ 215,000	-	-	-	2	-	-	-
EWA	\$ 265,000	\$ 271,500	2.5%	\$6,500	5	8	60.0%	3
EWA GEN	-	\$ 302,450	-	-	-	2	-	-
EWA GEN LOMBARD WAY	\$ 384,500	-	-	-	1	-	-	-
EWA GEN SODA CREEK	\$ 247,500	\$ 304,500	23.0%	\$57,000	2	4	100.0%	2
EWA GEN SUN TERRA ON THE PARK	\$ 250,000	\$ 245,000	-2.0%	-\$5,000	1	1	0.0%	0
HOAKALEI-KA MAKANA	\$ 469,000	\$ 507,500	8.2%	\$38,500	3	3	0.0%	0
KAPOLEI	\$ 310,000	\$ 420,500	35.6%	\$110,500	5	2	-60.0%	-3
KAPOLEI MALANAI	\$ 270,000	-	-	-	1	-	-	-
KO OLINA	\$ 904,500	\$ 568,000	-37.2%	-\$336,500	8	7	-12.5%	-1
WESTLOCH FAIRWAY	-	\$ 291,000	-	-	-	2	-	-
OCEAN POINTE	\$ 393,000	\$ 429,000	9.2%	\$36,000	6	17	183.3%	11
Ewa Plain Region	\$ 389,500	\$ 408,000	4.7%	\$18,500	34	46	35.3%	12
Hawaii Kai Region	2014 Median	2015 Median	+/-	+/-	2014 Sold	2015 Sold	+/-	+/-
HAHAIONE-LOWER	\$ 532,500	\$ 521,000	-2.2%	-\$11,500	6	4	-33.3%	-2
KALAMA VALLEY	-	\$ 608,750	-	-	-	2	-	-
MARINERS VALLEY	\$ 562,000	\$ 587,000	4.4%	\$25,000	1	1	0.0%	0
WEST MARINA	\$ 680,125	\$ 645,000	-5.2%	-\$35,125	14	9	-35.7%	-5
Hawaii Kai Region	\$ 655,000	\$ 600,000	-8.4%	-\$55,000	21	16	-23.8%	-5
Kailua Region	2014 Median	2015 Median	+/-	+/-	2014 Sold	2015 Sold	+/-	+/-
AIKAHI PARK	-	\$ 435,000	-	-	-	1	-	-
BLUESTONE	-	\$ 1,050,000	-	-	-	2	-	-
KAILUA TOWN	\$ 526,250	\$ 640,000	21.6%	\$113,750	6	3	-50.0%	-3
WAIMANALO	\$ 451,500	-	-	-	1	-	-	-
KUKILAKILA	\$ 640,000	\$ 715,000	11.7%	\$75,000	1	2	100.0%	1
Kailua Region	\$ 526,250	\$ 715,000	35.9%	\$188,750	8	8	0.0%	0
Kaneohe Region	2014 Median	2015 Median	+/-	+/-	2014 Sold	2015 Sold	+/-	+/-
COUNTRY CLUB	\$ 585,000	\$ 570,000	-2.6%	-\$15,000	2	1	-50.0%	-1
HAIKU VILLAGE	-	\$ 432,000	-	-	-	1	-	-
HAIKU PLANTATION	\$ 525,000	-	-	-	1	-	-	-
KANEOHE TOWN	-	\$ 300,000	-	-	-	1	-	-
KAALAE	\$ 153,000	-	-	-	1	-	-	-
LILIPUNA	\$ 495,000	\$ 600,000	21.2%	\$105,000	4	1	-75.0%	-3
MAHINUI	\$ 413,000	-	-	-	1	-	-	-
PARKWAY	-	\$ 475,000	-	-	-	1	-	-
PUUALII	\$ 449,000	\$ 470,000	4.7%	\$21,000	3	4	33.3%	1
PUNALUU	\$ 80,000	\$ 80,500	0.6%	\$500	1	2	100.0%	1
TEMPLE VALLEY	\$ 447,500	\$ 530,000	18.4%	\$82,500	2	5	150.0%	3
WINDWARD ESTATES	\$ 288,750	\$ 330,000	14.3%	\$41,250	10	5	-50.0%	-5
Kaneohe Region	\$ 405,000	\$ 451,000	11.4%	\$46,000	25	21	-16.0%	-4

Condo Solds - May 2015 vs 2014 (Based on region and neighborhood groupings as listed in MLS) - Page 2 of 3

Leeward Region	2014 Median	2015 Median	+/-	+/-	2014 Sold	2015 Sold	+/-	+/-
MAILI	\$ 126,500	\$ 247,750	95.8%	\$121,250	2	2	0.0%	0
WAIANAE	\$ 64,950	\$ 108,500	67.1%	\$43,550	2	2	0.0%	0
MAKAHA	\$ 150,000	\$ 134,000	-10.7%	-\$16,000	9	6	-33.3%	-3
Leeward Region	\$ 130,000	\$ 124,000	-4.6%	-\$6,000	13	10	-23.1%	-3

Makakilo Region	2014 Median	2015 Median	+/-	+/-	2014 Sold	2015 Sold	+/-	+/-
MAKAKILO-UPPER	\$ 311,000	\$ 313,750	0.9%	\$2,750	7	16	128.6%	9
Makakilo Region	\$ 311,000	\$ 313,750	0.9%	\$2,750	7	16	128.6%	9

Metro Region	2014 Median	2015 Median	+/-	+/-	2014 Sold	2015 Sold	+/-	+/-
ALA MOANA	\$ 351,490	\$ 265,000	-24.6%	-\$86,490	11	12	9.1%	1
ALIIMANU	\$ 217,500	-	-	-	2	-	-	-
CHINATOWN	\$ 576,000	\$ 422,000	-26.7%	-\$154,000	4	8	100.0%	4
DILLINGHAM	\$ 470,000	-	-	-	1	-	-	-
DOWNTOWN	\$ 314,500	\$ 327,000	4.0%	\$12,500	14	12	-14.3%	-2
HOLIDAY MART	\$ 335,000	\$ 295,000	-11.9%	-\$40,000	6	5	-16.7%	-1
KAKAAKO	\$ 780,000	\$ 745,000	-4.5%	-\$35,000	29	17	-41.4%	-12
KALIHI AREA	-	\$ 270,000	-	-	-	1	-	-
KALIHI LOWER	\$ 209,000	\$ 230,000	10.0%	\$21,000	2	1	-50.0%	-1
KAPAHULU	-	\$ 411,000	-	-	-	2	-	-
KAPALAMA	\$ 230,000	\$ 240,000	4.3%	\$10,000	1	1	0.0%	0
KAPIO/KINAU/WARD	\$ 290,000	-	-	-	1	-	-	-
KAPOLANI	\$ 509,000	\$ 595,500	17.0%	\$86,500	12	10	-16.7%	-2
MAKIKI	\$ 305,494	\$ 282,000	-7.7%	-\$23,494	4	4	0.0%	0
MAKIKI AREA	\$ 355,000	\$ 345,000	-2.8%	-\$10,000	21	15	-28.6%	-6
MANOA-LOWER	-	\$ 200,000	-	-	-	1	-	-
MCCULLY	\$ 280,000	-	-	-	3	-	-	-
MOILIILI	\$ 350,000	\$ 281,000	-19.7%	-\$69,000	9	4	-55.6%	-5
NUUANU-LOWER	\$ 513,500	\$ 446,000	-13.1%	-\$67,500	3	10	233.3%	7
PAWAA	\$ 220,000	\$ 334,740	52.2%	\$114,740	7	2	-71.4%	-5
PUNAHOU	\$ 310,000	\$ 410,000	32.3%	\$100,000	3	1	-66.7%	-2
PUNCHBOWL AREA	\$ 322,500	\$ 352,500	9.3%	\$30,000	6	11	83.3%	5
PUNCHBOWL-LOWER	\$ 155,000	\$ 209,000	34.8%	\$54,000	1	4	300.0%	3
SALT LAKE	\$ 307,500	\$ 319,000	3.7%	\$11,500	25	18	-28.0%	-7
UNIVERSITY	\$ 253,000	-	-	-	1	-	-	-
WAIKIKI	\$ 315,000	\$ 361,500	14.8%	\$46,500	85	92	8.2%	7
Metro Region	\$ 350,000	\$ 360,000	2.9%	\$10,000	251	231	-8.0%	-20

North Shore Region	2014 Median	2015 Median	+/-	+/-	2014 Sold	2015 Sold	+/-	+/-
WAIALUA	\$ 265,000	\$ 254,500	-4.0%	-\$10,500	3	2	-33.3%	-1
KUILIMA	\$ 460,000	\$ 408,000	-11.3%	-\$52,000	3	9	200.0%	6
North Shore Region	\$ 380,000	\$ 401,000	5.5%	\$21,000	6	11	83.3%	5

Pearl City Region	2014 Median	2015 Median	+/-	+/-	2014 Sold	2015 Sold	+/-	+/-
HALAWA	\$ 382,500	\$ 330,000	-13.7%	-\$52,500	2	3	50.0%	1
MANANA	\$ 283,000	-	-	-	3	-	-	-
NAVY/FEDERAL	-	\$ 245,000	-	-	-	2	-	-
NEWTOWN	\$ 431,500	\$ 426,000	-1.3%	-\$5,500	2	1	-50.0%	-1
PEARLRIDGE	\$ 352,500	\$ 280,000	-20.6%	-\$72,500	14	13	-7.1%	-1
WAI'AU	\$ 305,000	\$ 355,000	16.4%	\$50,000	4	5	25.0%	1
WAIMALU	\$ 186,000	-	-	-	2	-	-	-
WAILUNA	\$ 462,500	\$ 453,600	-1.9%	-\$8,900	2	2	0.0%	0
Pearl City Region	\$ 340,000	\$ 340,000	0.0%	\$0	29	26	-10.3%	-3

Condo Solds - May 2015 vs 2014 (Based on region and neighborhood groupings as listed in MLS) - Page 3 of 3

Waipahu Region	2014 Median	2015 Median	+/-	+/-	2014 Sold	2015 Sold	+/-	+/-
ROYAL KUNIA	-	\$ 325,000	-	-	-	1	-	-
WAIKELE	\$ 328,500	\$ 386,000	17.5%	\$57,500	4	7	75.0%	3
WAIPAHU-LOWER	\$ 242,000	\$ 172,500	-28.7%	-\$69,500	9	2	-77.8%	-7
WAIPIO GENTRY	\$ 288,000	\$ 293,500	1.9%	\$5,500	4	8	100.0%	4
Waipahu Region	\$ 295,000	\$ 312,500	5.9%	\$17,500	17	18	5.9%	1