

Local Market Update

Single Family Homes

May 2013



May 2013		New Listings			Closed Sales			Median Sales Price			Percent of Original Price Received			Days on Market Until Sale			Inventory of Homes for Sale		
		May-13	May-12	Change	May-13	May-12	Change	May-13	May-12	Change	May-13	May-12	Change	May-13	May-12	Change	May-13	May-12	Change
Aina Haina - Kuliouou	1-3-6 to 1-3-8	6	6	0%	12	9	33%	\$925,000	\$1,150,000	-20%	99.7%	100.0%	0%	33	10	230%	29	39	-26%
Ala Moana - Kakaako	1-2-3	2	1	100%	1	2	-50%	\$525,000	\$892,500	-41%	105.2%	98.7%	7%	77	50	54%	3	3	0%
Downtown - Nuuanu	1-1-8 to 1-2-2	9	9	0%	9	7	29%	\$704,000	\$820,000	-14%	98.5%	99.4%	-1%	87	28	211%	31	39	-21%
Ewa Plain	1-9-1	72	65	11%	41	25	64%	\$478,000	\$450,000	6%	100.6%	96.8%	4%	22	20	10%	132	132	0%
Hawaii Kai	1-3-9	32	22	45%	12	6	100%	\$930,500	\$1,769,750	-47%	101.7%	85.9%	18%	23	23	0%	62	61	2%
Kailua - Waimanalo	1-4-1 to Selected 1-4-4	40	34	18%	25	27	-7%	\$870,000	\$794,500	10%	99.0%	99.4%	0%	13	20	-35%	84	132	-36%
Kalihi - Palama	1-1-2 to 1-1-7	18	16	13%	9	8	13%	\$595,000	\$497,500	20%	99.8%	92.3%	8%	19	62	-69%	51	39	31%
Kaneohe	Selected 1-4-4 to 1-4-7	27	28	-4%	13	17	-24%	\$625,000	\$685,000	-9%	105.0%	88.4%	19%	18	30	-40%	75	81	-7%
Kapahulu - Diamond Head	1-3-1 to 1-3-4	22	27	-19%	16	27	-41%	\$772,500	\$715,000	8%	94.0%	95.5%	-2%	15	22	-32%	68	89	-24%
Makaha - Nanakuli	1-8-1 to 1-8-9	28	34	-18%	16	15	7%	\$348,500	\$295,000	18%	94.0%	95.5%	-2%	53	78	-32%	101	109	-7%
Makakilo	1-9-2 to 1-9-3	26	19	37%	11	11	0%	\$595,000	\$487,500	22%	101.7%	97.7%	4%	63	60	5%	49	48	2%
Makiki - Moiliili	1-2-4 to 1-2-9 (except 1-2-6)	7	17	-59%	8	16	-50%	\$1,034,000	\$812,500	27%	100.5%	97.1%	4%	47	15	213%	33	45	-27%
Mililani	Selected 1-9-4 to 1-9-5	33	32	3%	18	16	13%	\$625,000	\$598,500	4%	104.3%	99.8%	5%	26	30	-13%	53	60	-12%
Moanalua - Salt Lake	1-1-1	10	7	43%	6	5	20%	\$822,500	\$678,000	21%	101.9%	104.3%	-2%	29	11	164%	15	20	-25%
North Shore	1-5-6 to 1-6-9	19	12	58%	11	6	83%	\$705,000	\$682,500	3%	88.1%	99.4%	-11%	42	111	-62%	70	60	17%
Pearl City - Aiea	1-9-6 to 1-9-9	23	19	21%	23	14	64%	\$618,000	\$622,500	-1%	96.7%	99.2%	-3%	34	21	62%	59	55	7%
Wahiawa	1-7-1 to 1-7-7	8	9	-11%	8	4	100%	\$383,500	\$425,000	-10%	99.9%	98.0%	2%	11	31	-65%	22	29	-24%
Waialae - Kahala	1-3-5	22	12	83%	5	8	-38%	\$1,580,000	\$1,550,000	2%	97.1%	97.0%	0%	25	75	-67%	47	51	-8%
Waikiki	1-2-6	0	0	-	0	0	-	\$0	\$0	-	0.0%	0.0%	-	0	0	-	1	0	-
Waipahu	1-9-4	22	16	38%	19	12	58%	\$529,000	\$565,000	-6%	98.1%	95.8%	2%	24	79	-70%	57	46	24%
Windward Coast	1-4-8 to 1-5-5	7	11	-36%	3	7	-57%	\$615,000	\$589,000	4%	96.2%	81.2%	18%	30	78	-62%	36	52	-31%

Year to Date		New Listings			Closed Sales			Median Sales Price			Percent of Original Price Received			Days on Market Until Sale		
		May-13	May-12	Change	May-13	May-12	Change	May-13	May-12	Change	May-13	May-12	Change	May-13	May-12	Change
Aina Haina - Kuliouou	1-3-6 to 1-3-8	41	66	-38%	36	27	33%	\$1,034,444	\$985,000	5%	90.9%	98.7%	-8%	21	14	50%
Ala Moana - Kakaako	1-2-3	5	7	-29%	2	5	-60%	\$607,500	\$860,000	-29%	99.7%	101.2%	-1%	56	93	-40%
Downtown - Nuuanu	1-1-8 to 1-2-2	47	70	-33%	38	30	27%	\$757,500	\$750,000	1%	95.9%	94.1%	2%	31	33	-6%
Ewa Plain	1-9-1	321	397	-19%	204	153	33%	\$484,000	\$438,000	11%	98.9%	97.3%	2%	21	24	-13%
Hawaii Kai	1-3-9	106	161	-34%	56	74	-24%	\$918,000	\$850,000	8%	99.0%	94.0%	5%	21	25	-16%
Kailua - Waimanalo	1-4-1 to Selected 1-4-4	169	252	-33%	120	114	5%	\$867,000	\$779,500	11%	99.8%	94.4%	6%	17	42	-60%
Kalihi - Palama	1-1-2 to 1-1-7	66	95	-31%	32	41	-22%	\$561,000	\$530,000	6%	97.6%	90.6%	8%	37	24	54%
Kaneohe	Selected 1-4-4 to 1-4-7	112	157	-29%	71	62	15%	\$662,000	\$682,500	-3%	94.6%	94.7%	0%	39	41	-5%
Kapahulu - Diamond Head	1-3-1 to 1-3-4	96	196	-51%	78	93	-16%	\$790,000	\$750,000	5%	99.1%	90.9%	9%	16	29	-45%
Makaha - Nanakuli	1-8-1 to 1-8-9	147	226	-35%	66	81	-19%	\$330,000	\$300,000	10%	93.6%	92.3%	1%	46	29	59%
Makakilo	1-9-2 to 1-9-3	85	13	554%	54	41	32%	\$565,000	\$525,000	8%	99.1%	96.3%	3%	24	60	-60%
Makiki - Moiliili	1-2-4 to 1-2-9 (except 1-2-6)	48	93	-48%	43	44	-2%	\$920,000	\$862,500	7%	96.8%	90.8%	7%	33	29	14%
Mililani	Selected 1-9-4 to 1-9-5	130	172	-24%	57	79	-28%	\$620,000	\$605,000	2%	100.0%	97.6%	2%	22	50	-56%
Moanalua - Salt Lake	1-1-1	34	38	-11%	22	16	38%	\$780,000	\$591,500	32%	103.0%	94.6%	9%	18	21	-14%
North Shore	1-5-6 to 1-6-9	81	104	-22%	39	37	5%	\$705,000	\$689,000	2%	97.2%	92.5%	5%	32	74	-57%
Pearl City - Aiea	1-9-6 to 1-9-9	122	144	-15%	92	63	46%	\$577,500	\$585,000	-1%	96.3%	94.5%	2%	36	32	13%
Wahiawa	1-7-1 to 1-7-7	40	58	-31%	31	14	121%	\$405,000	\$357,500	13%	96.4%	92.9%	4%	15	51	-71%
Waialae - Kahala	1-3-5	62	92	-33%	35	34	3%	\$1,600,000	\$1,358,500	18%	98.3%	90.8%	8%	27	51	-47%
Waikiki	1-2-6	1	1	0%	0	1	-100%	\$0	\$835,000	-100%	0.0%	92.9%	-100%	0	42	-100%
Waipahu	1-9-4	103	140	-26%	99	72	38%	\$550,000	\$485,000	13%	98.4%	95.1%	3%	19	42	-55%
Windward Coast	1-4-8 to 1-5-5	39	67	-42%	23	18	28%	\$565,000	\$455,000	24%	97.6%	99.5%	-2%	47	47	0%

SOURCE: Honolulu Board of REALTORS®, compiled from MLS data.

Local Market Update

Condos May 2013



May 2013		New Listings			Closed Sales			Median Sales Price			Percent of Original Price Received			Days on Market Until Sale			Inventory of Homes for Sale		
		May-13	May-12	Change	May-13	May-12	Change	May-13	May-12	Change	May-13	May-12	Change	May-13	May-12	Change	May-13	May-12	Change
Aina Haina - Kuliuouou	1-3-6 to 1-3-8	1	1	0%	0	1	-	\$0	\$475,000	-	0.0%	93.1%	-	0	42	-	1	3	-67%
Ala Moana - Kakaako	1-2-3	49	33	48%	44	32	38%	\$274,900	\$420,000	-35%	97.3%	103.3%	-6%	29	26	12%	150	140	7%
Downtown - Nuuanu	1-1-8 to 1-2-2	59	43	37%	29	18	61%	\$350,000	\$351,500	0%	95.9%	97.1%	-1%	34	47	-28%	125	123	2%
Ewa Plain	1-9-1	42	35	20%	30	22	36%	\$354,500	\$343,986	3%	101.4%	99.0%	2%	18	22	-18%	83	75	11%
Hawaii Kai	1-3-9	18	23	-22%	23	15	53%	\$580,000	\$550,000	5%	105.5%	95.0%	11%	31	41	-24%	45	69	-35%
Kailua - Waimanalo	1-4-1 to Selected 1-4-4	9	15	-40%	9	8	13%	\$435,000	\$385,000	13%	102.4%	96.6%	6%	15	73	-79%	19	37	-49%
Kalihi - Palama	1-1-2 to 1-1-7	15	14	7%	4	16	-75%	\$311,500	\$317,500	-2%	100.0%	96.9%	3%	14	37	-62%	25	50	-50%
Kaneohe	Selected 1-4-4 to 1-4-7	17	18	-6%	12	8	50%	\$432,000	\$369,900	17%	100.0%	94.8%	5%	21	39	-46%	37	42	-12%
Kapahulu - Diamond Head	1-3-1 to 1-3-4	14	15	-7%	11	10	10%	\$530,000	\$562,500	-6%	100.0%	94.2%	6%	34	45	-24%	51	71	-28%
Makaha - Nanakuli	1-8-1 to 1-8-9	13	15	-13%	20	6	233%	\$130,500	\$106,500	23%	90.3%	92.8%	-3%	38	41	-7%	66	59	12%
Makakilo	1-9-2 to 1-9-3	16	10	60%	7	13	-46%	\$225,000	\$250,000	-10%	97.9%	100.0%	-2%	11	11	0%	24	26	-8%
Makiki - Moiliili	1-2-4 to 1-2-9 (except 1-2-6)	56	50	12%	95	35	171%	\$305,000	\$295,000	3%	98.4%	92.8%	6%	39	26	50%	151	179	-16%
Mililani	Selected 1-9-4 to 1-9-5	25	36	-31%	16	24	-33%	\$303,000	\$250,625	21%	97.9%	94.9%	3%	30	30	0%	40	90	-56%
Moanalua - Salt Lake	1-1-1	24	21	14%	20	17	18%	\$360,000	\$277,000	30%	100.3%	99.6%	1%	22	16	38%	50	53	-6%
North Shore	1-5-6 to 1-6-9	3	7	-57%	5	2	150%	\$249,000	\$192,950	29%	100.0%	90.8%	10%	15	141	-89%	14	22	-36%
Pearl City - Aiea	1-9-6 to 1-9-9	33	27	22%	32	34	-6%	\$277,500	\$268,500	3%	98.2%	95.4%	3%	30	46	-35%	61	106	-42%
Wahiawa	1-7-1 to 1-7-7	1	3	-67%	0	1	-	\$0	\$143,500	-	0.0%	99.0%	-	0	71	-	6	12	-50%
Waialae - Kahala	1-3-5	4	3	33%	6	6	0%	\$322,500	\$385,000	-16%	91.2%	88.1%	4%	63	60	5%	17	20	-15%
Waikiki	1-2-6	126	130	-3%	94	86	9%	\$327,000	\$366,500	-11%	94.8%	90.6%	5%	31	46	-33%	412	528	-22%
Waipahu	1-9-4	17	27	-37%	27	16	69%	\$285,000	\$253,000	13%	103.6%	93.0%	11%	14	30	-53%	59	64	-8%
Windward Coast	1-4-8 to 1-5-5	0	3	-	2	1	100%	\$197,000	\$215,000	-8%	97.5%	93.9%	4%	64	120	-47%	12	15	-20%

Year to Date		New Listings			Closed Sales			Median Sales Price			Percent of Original Price Received			Days on Market Until Sale		
		May-13	May-12	Change	May-13	May-12	Change	May-13	May-12	Change	May-13	May-12	Change	May-13	May-12	Change
Aina Haina - Kuliuouou	1-3-6 to 1-3-8	3	3	0%	2	1	100%	\$697,500	\$475,000	47%	99.4%	93.1%	7%	15	42	-64%
Ala Moana - Kakaako	1-2-3	253	310	-18%	175	163	7%	\$369,000	\$400,000	-8%	98.4%	94.1%	5%	33	45	-27%
Downtown - Nuuanu	1-1-8 to 1-2-2	214	245	-13%	145	107	36%	\$445,000	\$365,000	22%	94.9%	97.4%	-3%	29	51	-43%
Ewa Plain	1-9-1	160	235	-32%	134	114	18%	\$331,750	\$312,000	6%	97.7%	96.8%	1%	20	29	-31%
Hawaii Kai	1-3-9	106	147	-28%	89	70	27%	\$550,000	\$507,500	8%	100.2%	94.0%	7%	15	56	-73%
Kailua - Waimanalo	1-4-1 to Selected 1-4-4	41	86	-52%	34	42	-19%	\$427,500	\$418,500	2%	101.2%	94.7%	7%	11	36	-69%
Kalihi - Palama	1-1-2 to 1-1-7	54	95	-43%	32	42	-24%	\$349,950	\$325,000	8%	96.7%	97.0%	0%	25	33	-24%
Kaneohe	Selected 1-4-4 to 1-4-7	88	106	-17%	63	43	47%	\$435,000	\$395,000	10%	100.0%	96.6%	4%	26	57	-54%
Kapahulu - Diamond Head	1-3-1 to 1-3-4	66	103	-36%	52	36	44%	\$517,500	\$450,000	15%	98.1%	88.2%	11%	26	49	-47%
Makaha - Nanakuli	1-8-1 to 1-8-9	88	103	-15%	66	30	120%	\$112,000	\$93,000	20%	93.4%	92.5%	1%	31	51	-39%
Makakilo	1-9-2 to 1-9-3	50	69	-28%	31	34	-9%	\$237,000	\$253,500	-7%	95.2%	98.4%	-3%	17	18	-6%
Makiki - Moiliili	1-2-4 to 1-2-9 (except 1-2-6)	293	414	-29%	243	182	34%	\$315,000	\$304,500	3%	97.1%	95.8%	1%	25	30	-17%
Mililani	Selected 1-9-4 to 1-9-5	125	220	-43%	97	105	-8%	\$300,000	\$253,000	19%	100.2%	95.5%	5%	20	27	-26%
Moanalua - Salt Lake	1-1-1	97	138	-30%	67	68	-1%	\$299,000	\$266,500	12%	100.0%	93.8%	7%	21	17	24%
North Shore	1-5-6 to 1-6-9	24	40	-40%	14	12	17%	\$242,000	\$212,500	14%	99.0%	90.8%	9%	36	95	-62%
Pearl City - Aiea	1-9-6 to 1-9-9	162	227	-29%	119	113	5%	\$269,900	\$275,000	-2%	98.1%	96.5%	2%	25	44	-43%
Wahiawa	1-7-1 to 1-7-7	6	16	-63%	7	5	40%	\$145,000	\$115,000	26%	93.5%	79.3%	18%	41	71	-42%
Waialae - Kahala	1-3-5	25	36	-31%	20	16	25%	\$430,000	\$405,425	6%	92.9%	95.4%	-3%	50	34	47%
Waikiki	1-2-6	641	903	-29%	465	350	33%	\$316,100	\$284,000	11%	94.9%	90.2%	5%	36	52	-31%
Waipahu	1-9-4	113	131	-14%	87	49	78%	\$266,500	\$265,800	0%	99.1%	96.7%	2%	15	30	-50%
Windward Coast	1-4-8 to 1-5-5	17	24	-29%	10	4	150%	\$192,500	\$187,500	3%	95.3%	94.0%	1%	52	142	-63%

SOURCE: Honolulu Board of REALTORS®, compiled from MLS data.

Local Market Update

May 2013

Aina Haina - Kuliouou

(1-3-6 to 1-3-8)

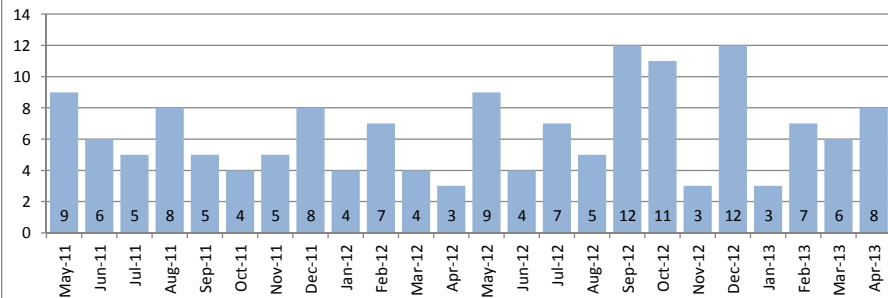


May 2013

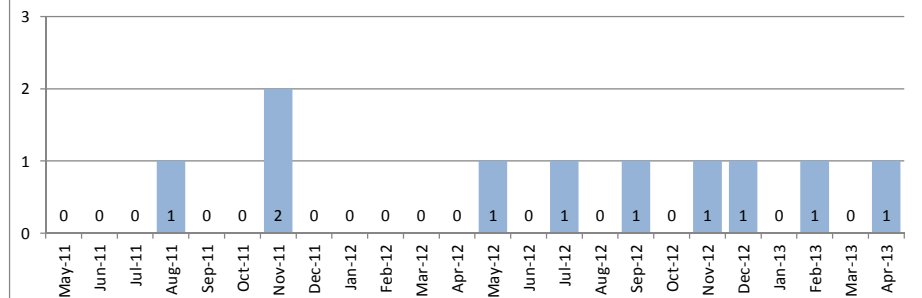
Single Family Homes	May			Year to Date		
	2013	2012	Change	2013	2012	Change
New Listings	6	6	0%	41	66	-38%
Closed Sales	12	9	33%	36	27	33%
Median Sales Price	\$925,000	\$1,150,000	-20%	\$1,034,444	\$985,000	5%
Percent of Original List Price Received	99.7%	100.0%	0%	90.9%	98.7%	-8%
Median Days on Market Until Sale	33	10	230%	21	14	50%
Inventory of Homes for Sale	29	39	-26%	--	--	--

Condos	May			Year to Date		
	2013	2012	Change	2013	2012	Change
New Listings	1	1	--	3	3	0%
Closed Sales	0	1	--	2	1	100%
Median Sales Price	\$0	\$475,000	--	\$697,500	\$475,000	47%
Percent of Original List Price Received	0.0%	93.1%	--	99.4%	93.1%	7%
Median Days on Market Until Sale	0	42	--	15	42	-64%
Inventory of Homes for Sale	1	3	-67%	--	--	--

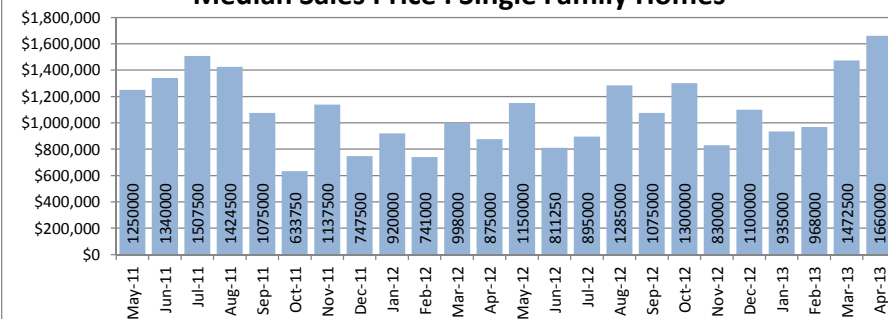
Closed Sales : Single Family Homes



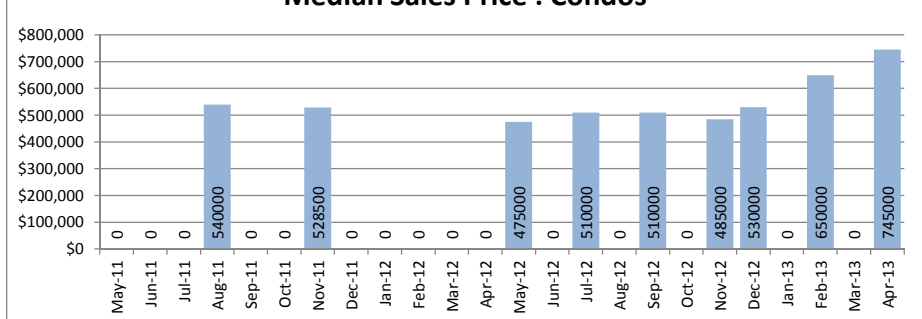
Closed Sales : Condos



Median Sales Price : Single Family Homes



Median Sales Price : Condos



SOURCE: Honolulu Board of REALTORS®, compiled from MLS data.

Local Market Update

May 2013

Ala Moana - Kakaako

(1-2-3)

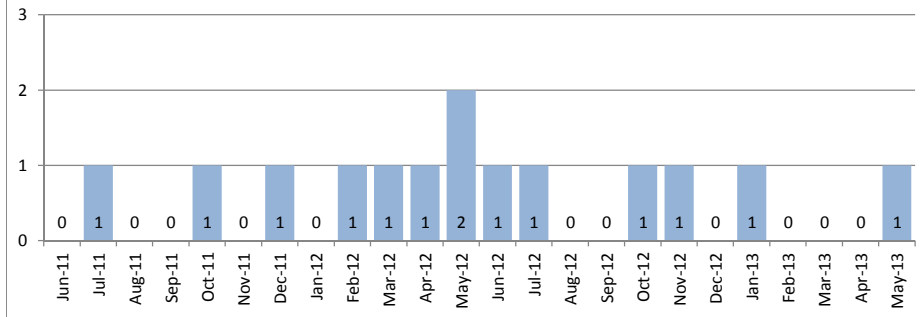


May 2013

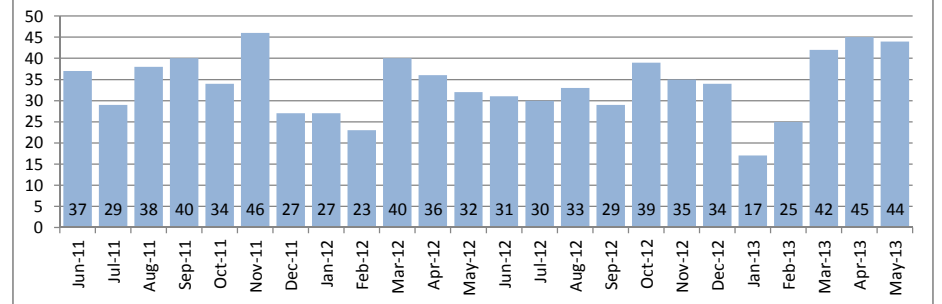
Single Family Homes	May			Year to Date		
	2013	2012	Change	2013	2012	Change
New Listings	2	1	100%	5	7	-29%
Closed Sales	1	2	-50%	2	5	-60%
Median Sales Price	\$525,000	\$892,500	-41%	\$607,500	\$860,000	-29%
Percent of Original List Price Received	105.2%	98.7%	7%	99.7%	101.2%	-1%
Median Days on Market Until Sale	77	50	54%	56	93	-40%
Inventory of Homes for Sale	3	3	0%	--	--	--

Condos	May			Year to Date		
	2013	2012	Change	2013	2012	Change
New Listings	49	33	48%	253	310	-18%
Closed Sales	44	32	38%	175	163	7%
Median Sales Price	\$274,900	\$420,000	-35%	\$369,000	\$400,000	-8%
Percent of Original List Price Received	97.3%	103.3%	-6%	98.4%	94.1%	5%
Median Days on Market Until Sale	29	26	12%	33	45	-27%
Inventory of Homes for Sale	150	140	7%	--	--	--

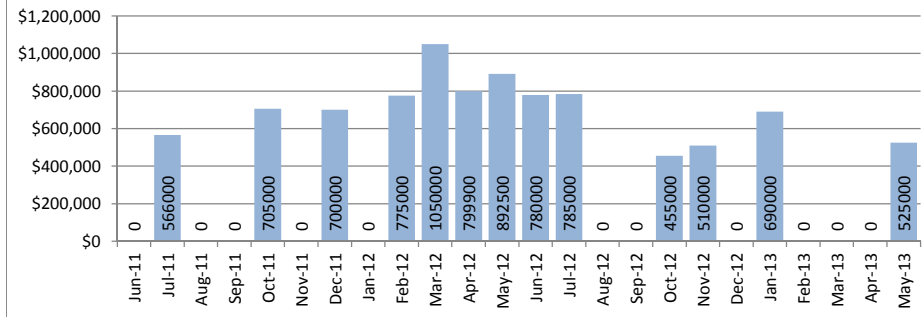
Closed Sales : Single Family Homes



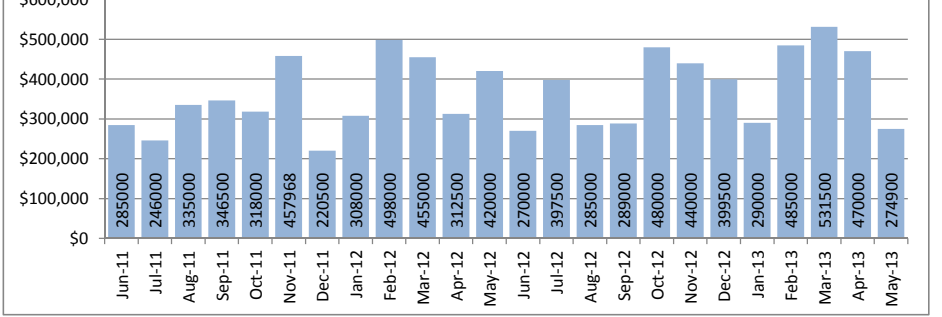
Closed Sales : Condos



Median Sales Price : Single Family Homes



Median Sales Price : Condos



SOURCE: Honolulu Board of REALTORS®, compiled from MLS data.

Local Market Update

May 2013

Downtown - Nuuanu

1-1-8 to 1-2-2

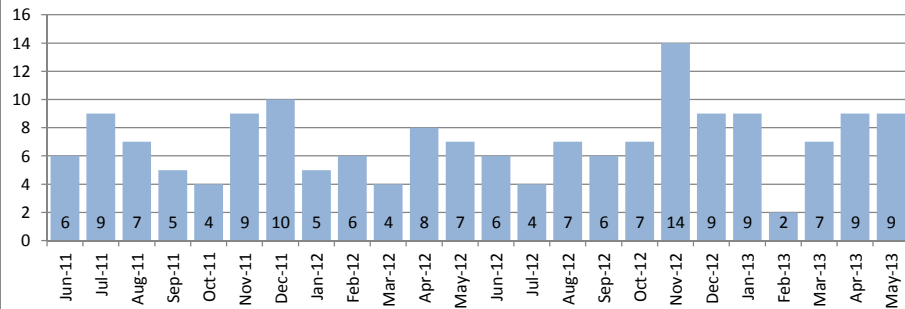


May 2013

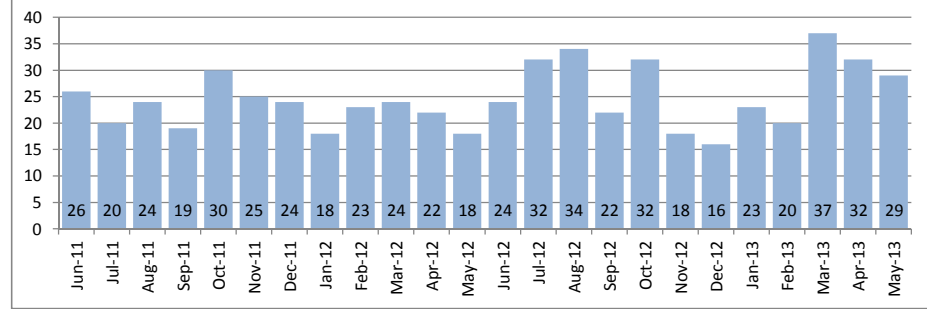
Single Family Homes	May			Year to Date		
	2013	2012	Change	2013	2012	Change
New Listings	9	9	0%	47	70	-33%
Closed Sales	9	7	29%	38	30	27%
Median Sales Price	\$704,000	\$820,000	-14%	\$757,500	\$750,000	1%
Percent of Original List Price Received	98.5%	99.4%	-1%	95.9%	94.1%	2%
Median Days on Market Until Sale	87	28	211%	31	33	-6%
Inventory of Homes for Sale	31	39	-21%	--	--	--

Condos	May			Year to Date		
	2013	2012	Change	2013	2012	Change
New Listings	59	43	37%	214	245	-13%
Closed Sales	29	18	61%	145	107	36%
Median Sales Price	\$350,000	\$351,500	0%	\$445,000	\$365,000	22%
Percent of Original List Price Received	95.9%	97.1%	-1%	94.9%	97.4%	-3%
Median Days on Market Until Sale	34	47	-28%	29	51	-43%
Inventory of Homes for Sale	125	123	2%	--	--	--

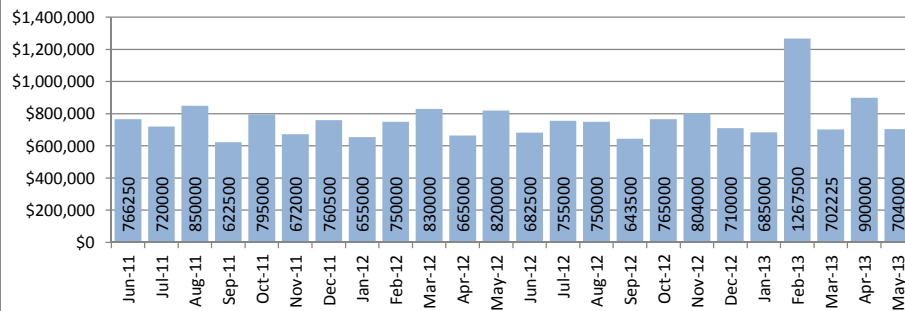
Closed Sales : Single Family Homes



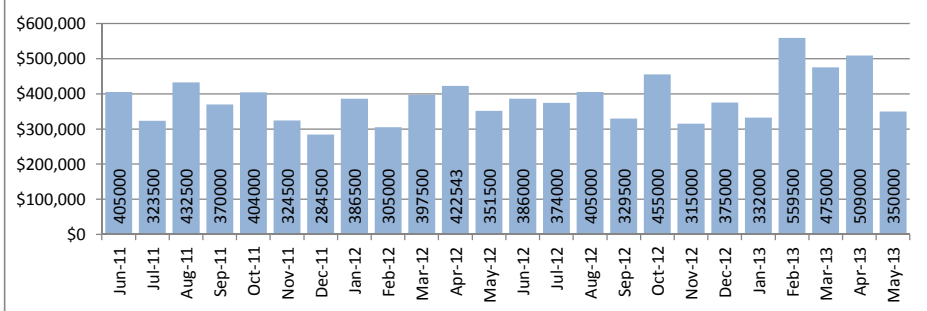
Closed Sales : Condos



Median Sales Price : Single Family Homes



Median Sales Price : Condos



SOURCE: Honolulu Board of REALTORS®, compiled from MLS data.

Local Market Update

May 2013



Ewa Plain

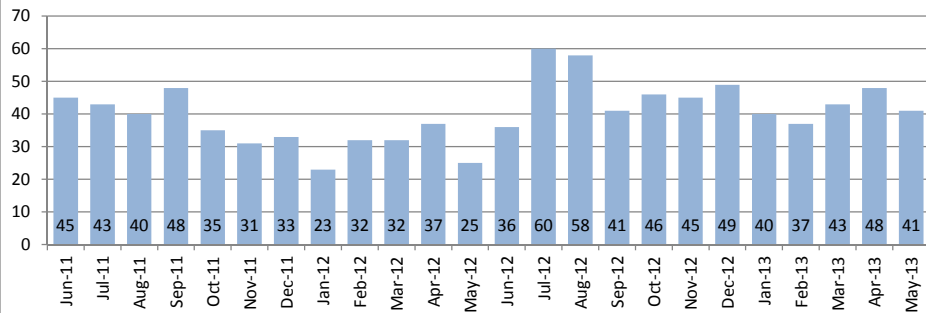
1-9-1

May 2013

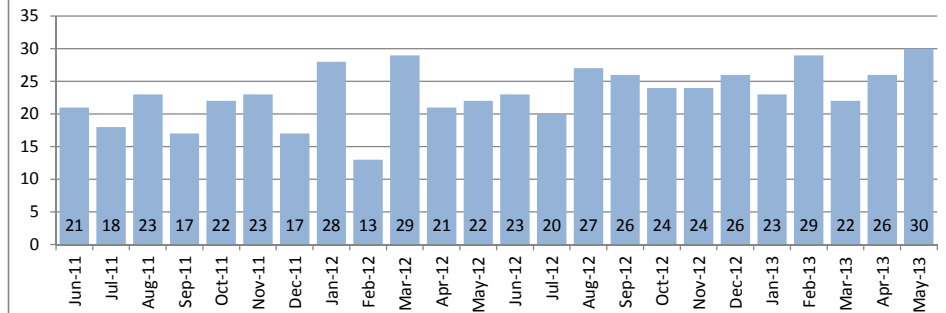
Single Family Homes	May			Year to Date		
	2013	2012	Change	2013	2012	Change
New Listings	72	65	11%	321	397	-19%
Closed Sales	41	25	64%	204	153	33%
Median Sales Price	\$478,000	\$450,000	6%	\$484,000	\$438,000	11%
Percent of Original List Price Received	100.6%	96.8%	4%	98.9%	97.3%	2%
Median Days on Market Until Sale	22	20	10%	21	24	-13%
Inventory of Homes for Sale	132	132	0%	--	--	--

Condos	May			Year to Date		
	2013	2012	Change	2013	2012	Change
New Listings	42	35	20%	160	235	-32%
Closed Sales	30	22	36%	134	114	18%
Median Sales Price	\$354,500	\$343,986	3%	\$331,750	\$312,000	6%
Percent of Original List Price Received	101.4%	99.0%	2%	97.7%	96.8%	1%
Median Days on Market Until Sale	18	22	-18%	20	29	-31%
Inventory of Homes for Sale	83	75	11%	--	--	--

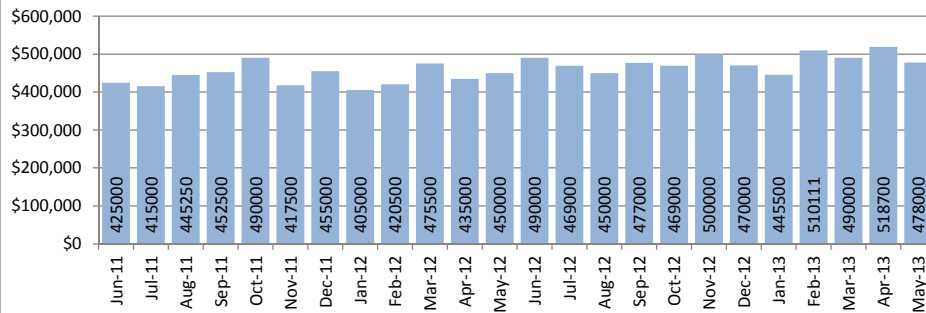
Closed Sales : Single Family Homes



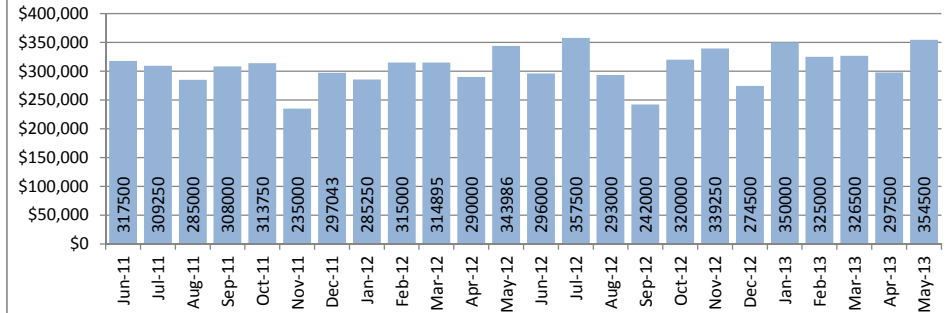
Closed Sales : Condos



Median Sales Price : Single Family Homes



Median Sales Price : Condos



SOURCE: Honolulu Board of REALTORS®, compiled from MLS data.

Local Market Update

May 2013

Hawaii Kai

1-3-9

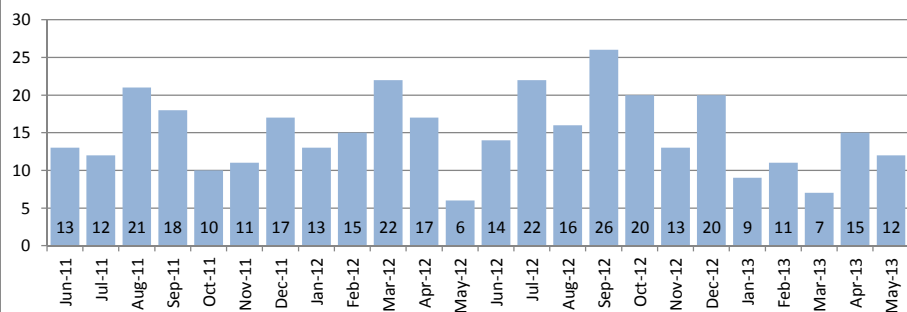


May 2013

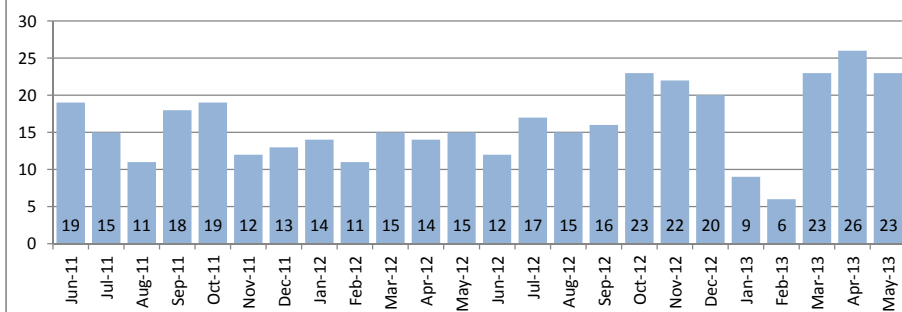
Single Family Homes	May			Year to Date		
	2013	2012	Change	2013	2012	Change
New Listings	32	22	45%	106	161	-34%
Closed Sales	12	6	100%	56	74	-24%
Median Sales Price	\$930,500	\$1,769,750	-47%	\$918,000	\$850,000	8%
Percent of Original List Price Received	101.7%	85.9%	18%	99.0%	94.0%	5%
Median Days on Market Until Sale	23	23	0%	21	25	-16%
Inventory of Homes for Sale	62	61	2%	--	--	--

Condos	May			Year to Date		
	2013	2012	Change	2013	2012	Change
New Listings	18	23	-22%	106	147	-28%
Closed Sales	23	15	53%	89	70	27%
Median Sales Price	\$580,000	\$550,000	5%	\$550,000	\$507,500	8%
Percent of Original List Price Received	105.5%	95.0%	11%	100.2%	94.0%	7%
Median Days on Market Until Sale	31	41	-24%	15	56	-73%
Inventory of Homes for Sale	45	69	-35%	--	--	--

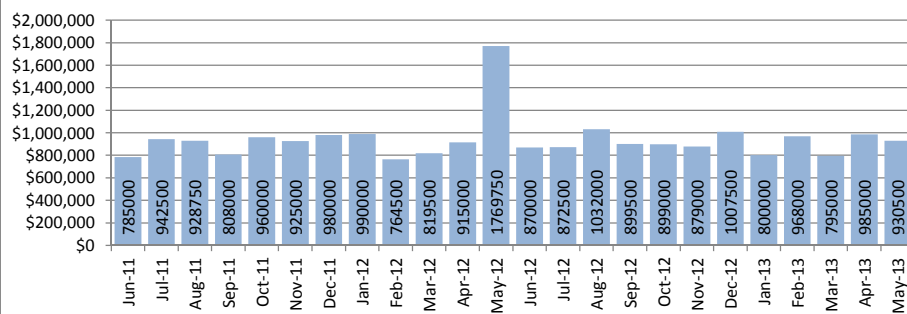
Closed Sales : Single Family Homes



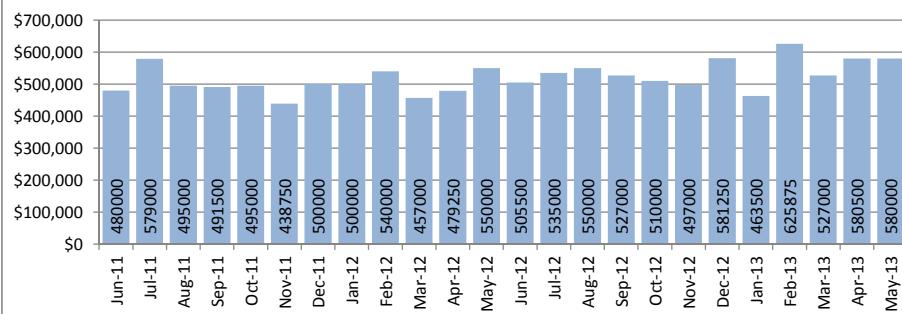
Closed Sales : Condos



Median Sales Price : Single Family Homes



Median Sales Price : Condos



SOURCE: Honolulu Board of REALTORS®, compiled from MLS data.

Local Market Update

May 2013



Kailua - Waimanalo

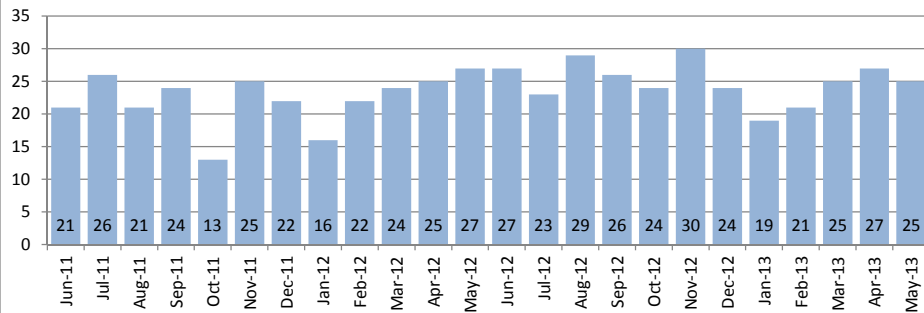
1-4-1 to Selected 1-4-4

May 2013

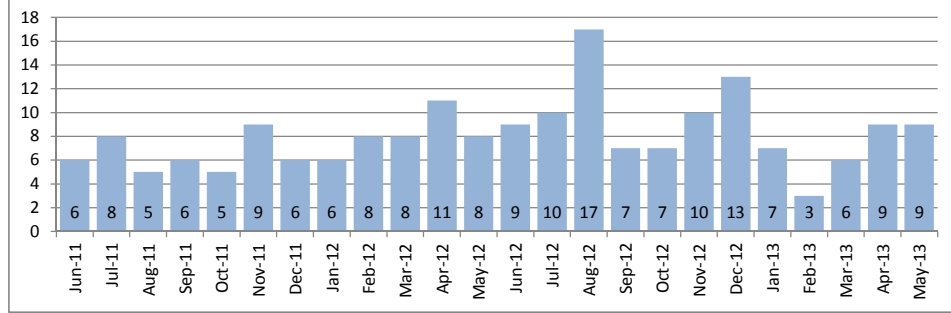
Single Family Homes	May			Year to Date		
	2013	2012	Change	2013	2012	Change
New Listings	40	34	18%	169	252	-33%
Closed Sales	25	27	-7%	120	114	5%
Median Sales Price	\$870,000	\$794,500	10%	\$867,000	\$779,500	11%
Percent of Original List Price Received	99.0%	99.4%	0%	99.8%	94.8%	5%
Median Days on Market Until Sale	13	20	-35%	17	42	-60%
Inventory of Homes for Sale	84	132	-36%	--	--	--

Condos	May			Year to Date		
	2013	2012	Change	2013	2012	Change
New Listings	9	15	-40%	41	86	-52%
Closed Sales	9	8	13%	34	42	-19%
Median Sales Price	\$435,000	\$385,000	13%	\$427,500	\$418,500	2%
Percent of Original List Price Received	102.4%	96.6%	6%	101.2%	94.7%	7%
Median Days on Market Until Sale	15	73	-79%	11	36	-69%
Inventory of Homes for Sale	19	37	-49%	--	--	--

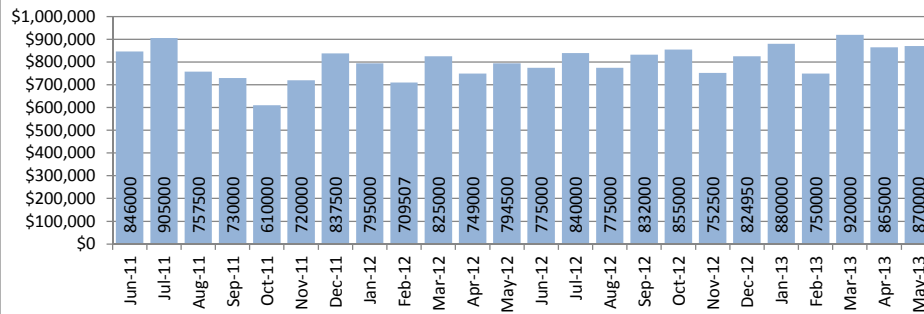
Closed Sales : Single Family Homes



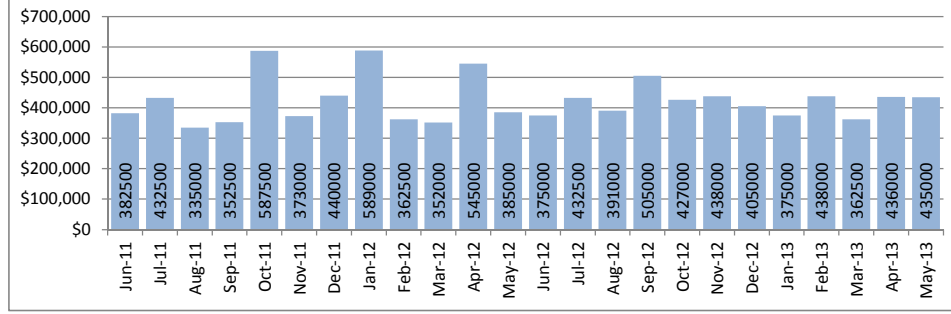
Closed Sales : Condos



Median Sales Price : Single Family Homes



Median Sales Price : Condos



SOURCE: Honolulu Board of REALTORS®, compiled from MLS data.

Local Market Update

May 2013



Kalihi - Palama

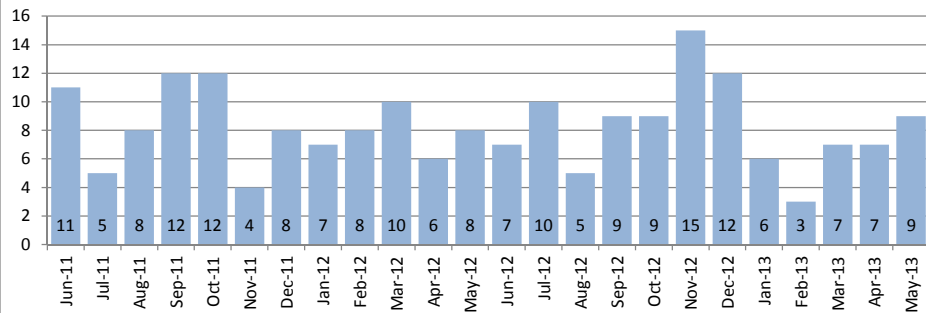
1-1-2 to 1-1-7

May 2013

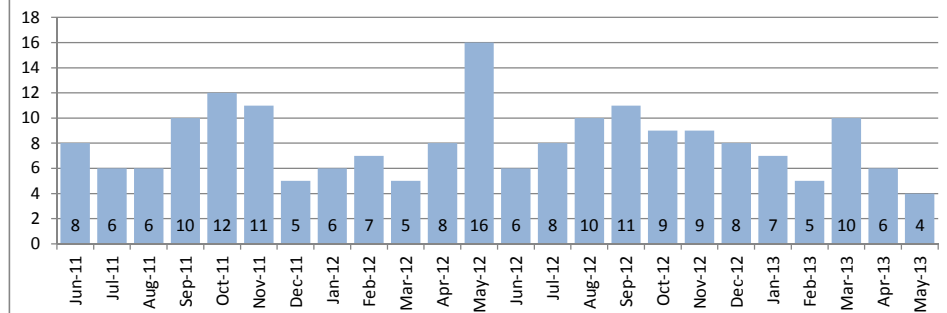
Single Family Homes	May			Year to Date		
	2013	2012	Change	2013	2012	Change
New Listings	18	16	13%	66	95	-31%
Closed Sales	9	8	13%	32	41	-22%
Median Sales Price	\$595,000	\$497,500	20%	\$561,000	\$530,000	6%
Percent of Original List Price Received	99.8%	92.3%	8%	97.6%	90.6%	8%
Median Days on Market Until Sale	19	62	-69%	37	24	54%
Inventory of Homes for Sale	51	39	31%	--	--	--

Condos	May			Year to Date		
	2013	2012	Change	2013	2012	Change
New Listings	15	14	7%	54	95	-43%
Closed Sales	4	16	-75%	32	42	-24%
Median Sales Price	\$311,500	\$317,500	-2%	\$349,950	\$325,000	8%
Percent of Original List Price Received	100.0%	96.9%	3%	96.7%	97.0%	0%
Median Days on Market Until Sale	14	37	-62%	25	33	-24%
Inventory of Homes for Sale	25	50	-50%	--	--	--

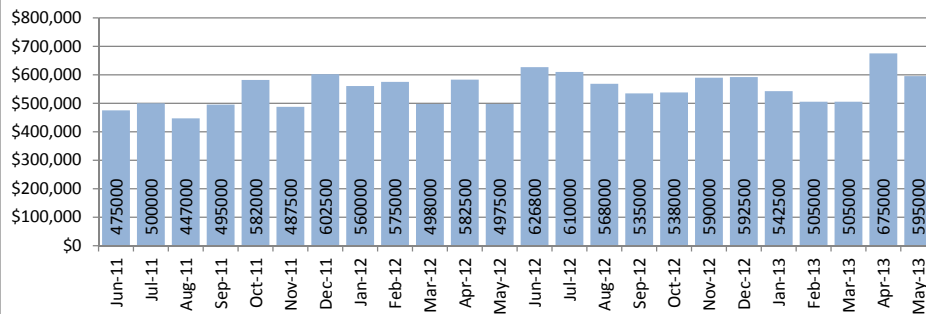
Closed Sales : Single Family Homes



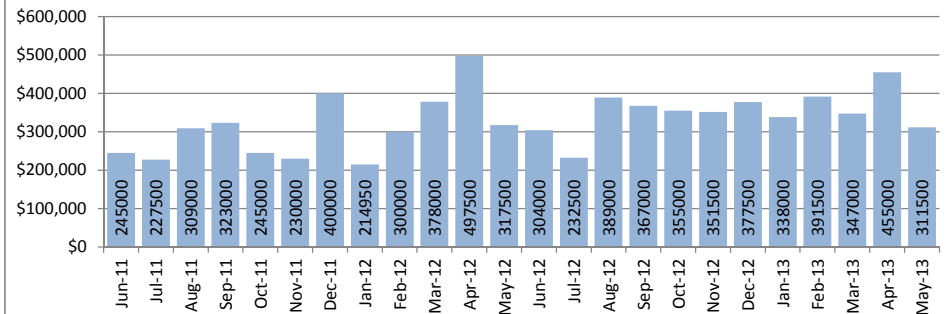
Closed Sales : Condos



Median Sales Price : Single Family Homes



Median Sales Price : Condos



SOURCE: Honolulu Board of REALTORS® , compiled from MLS data.

Local Market Update

May 2013



Kaneohe

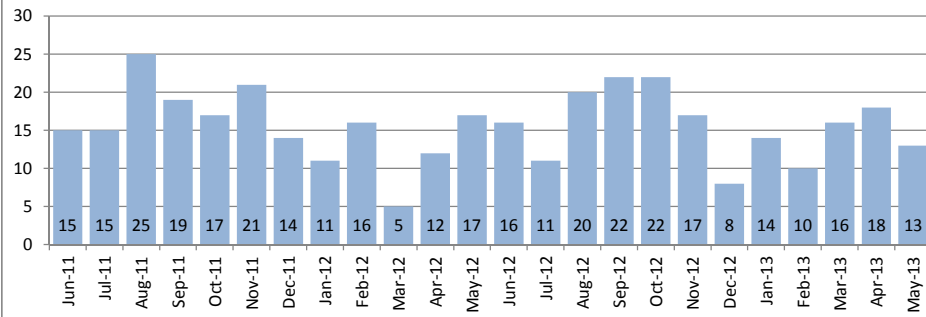
Selected 1-4-4 to 1-4-7

May 2013

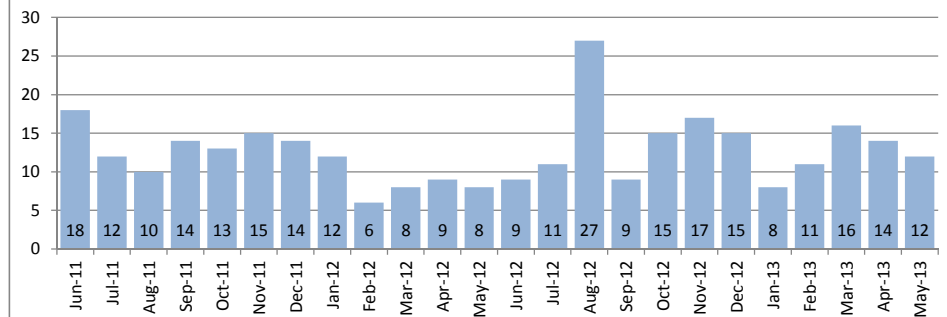
Single Family Homes	May			Year to Date		
	2013	2012	Change	2013	2012	Change
New Listings	27	28	-4%	112	157	-29%
Closed Sales	13	17	-24%	71	62	15%
Median Sales Price	\$625,000	\$685,000	-9%	\$662,000	\$682,500	-3%
Percent of Original List Price Received	105.0%	88.4%	19%	94.6%	94.7%	0%
Median Days on Market Until Sale	18	30	-40%	39	41	-5%
Inventory of Homes for Sale	75	81	-7%	--	--	--

Condos	May			Year to Date		
	2013	2012	Change	2013	2012	Change
New Listings	17	18	-6%	88	106	-17%
Closed Sales	12	8	50%	63	43	47%
Median Sales Price	\$432,000	\$369,900	17%	\$435,000	\$395,000	10%
Percent of Original List Price Received	100.0%	94.8%	5%	100.0%	96.6%	4%
Median Days on Market Until Sale	21	39	-46%	26	57	-54%
Inventory of Homes for Sale	37	42	-12%	--	--	--

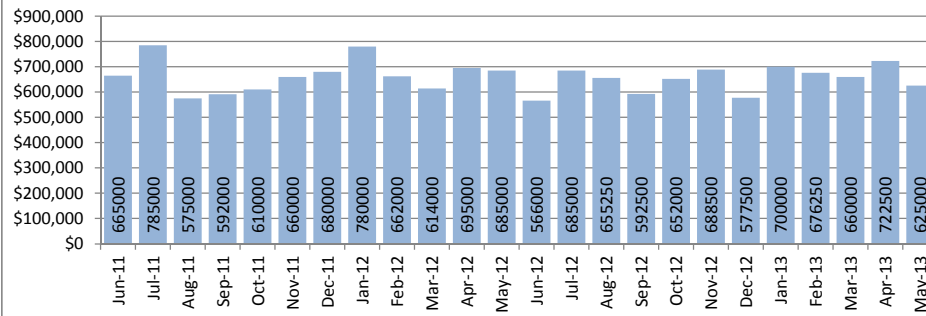
Closed Sales : Single Family Homes



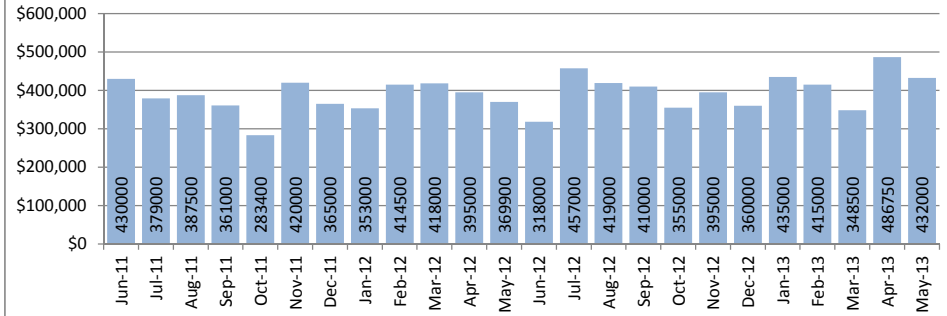
Closed Sales : Condos



Median Sales Price : Single Family Homes



Median Sales Price : Condos



SOURCE: Honolulu Board of REALTORS®, compiled from MLS data.

Local Market Update

May 2013

Kapahulu - Diamond Head

1-3-1 to 1-3-4

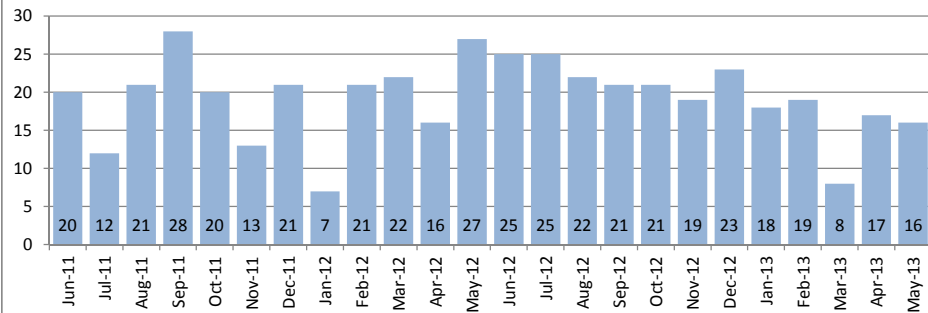


May 2013

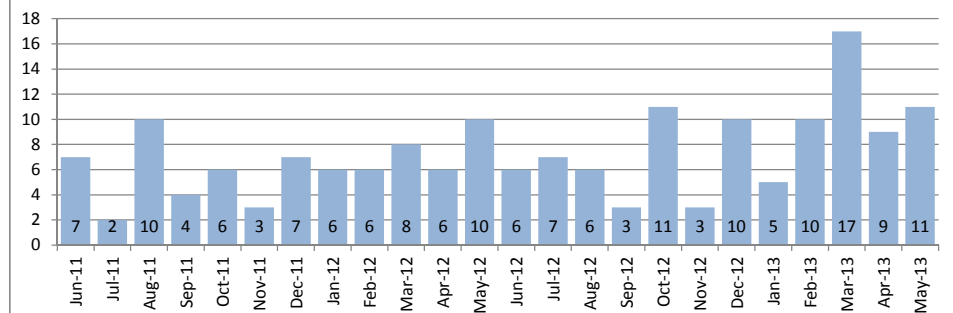
Single Family Homes	May			Year to Date		
	2013	2012	Change	2013	2012	Change
New Listings	22	27	-19%	96	196	-51%
Closed Sales	16	27	-41%	78	93	-16%
Median Sales Price	\$772,500	\$715,000	8%	\$790,000	\$750,000	5%
Percent of Original List Price Received	94.0%	95.5%	-2%	99.1%	90.9%	9%
Median Days on Market Until Sale	15	22	-32%	16	29	-45%
Inventory of Homes for Sale	68	89	-24%	--	--	--

Condos	May			Year to Date		
	2013	2012	Change	2013	2012	Change
New Listings	14	15	-7%	66	103	-36%
Closed Sales	11	10	10%	52	36	44%
Median Sales Price	\$530,000	\$562,500	-6%	\$517,500	\$450,000	15%
Percent of Original List Price Received	100.0%	94.2%	6%	98.1%	88.2%	11%
Median Days on Market Until Sale	34	45	-24%	26	49	-47%
Inventory of Homes for Sale	51	71	-28%	--	--	--

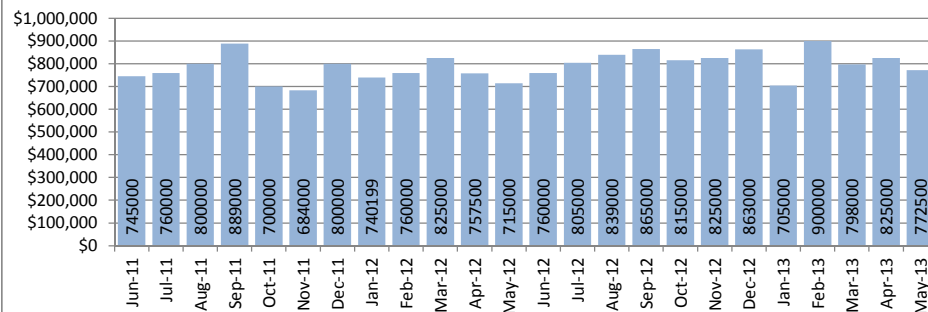
Closed Sales : Single Family Homes



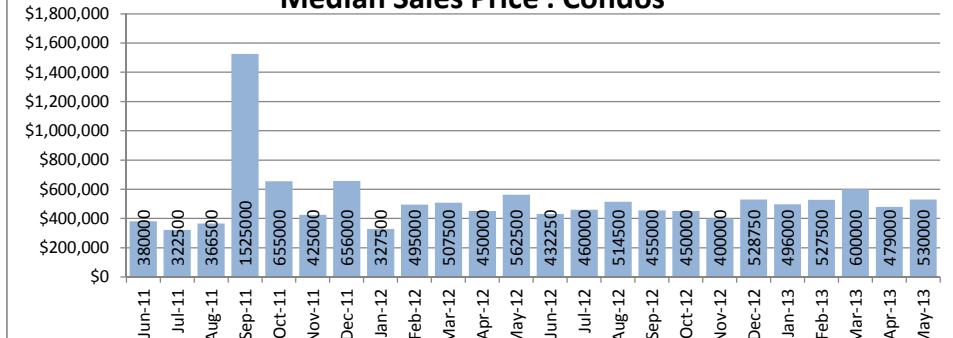
Closed Sales : Condos



Median Sales Price : Single Family Homes



Median Sales Price : Condos



SOURCE: Honolulu Board of REALTORS®, compiled from MLS data.

Local Market Update

May 2013

Makaha - Nanakuli

1-8-1 to 1-8-9

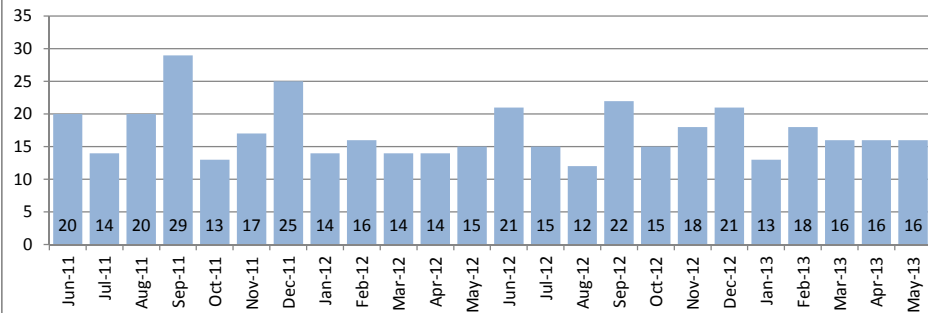


May 2013

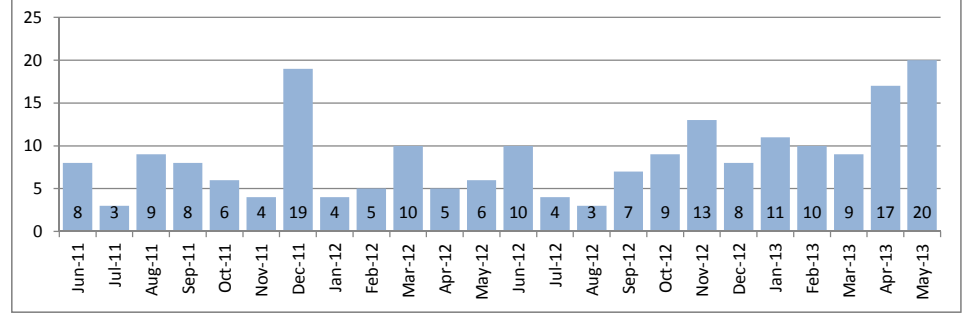
Single Family Homes	May			Year to Date		
	2013	2012	Change	2013	2012	Change
New Listings	28	34	-18%	147	226	-35%
Closed Sales	16	15	7%	66	81	-19%
Median Sales Price	\$348,500	\$295,000	18%	\$330,000	\$300,000	10%
Percent of Original List Price Received	94.0%	95.5%	-2%	93.6%	92.3%	1%
Median Days on Market Until Sale	53	78	-32%	46	29	59%
Inventory of Homes for Sale	101	109	-7%	--	--	--

Condos	May			Year to Date		
	2013	2012	Change	2013	2012	Change
New Listings	13	15	-13%	88	103	-15%
Closed Sales	20	6	233%	66	30	120%
Median Sales Price	\$130,500	\$106,500	23%	\$112,000	\$93,000	20%
Percent of Original List Price Received	90.3%	92.8%	-3%	93.4%	92.5%	1%
Median Days on Market Until Sale	38	41	-7%	31	51	-39%
Inventory of Homes for Sale	66	59	12%	--	--	--

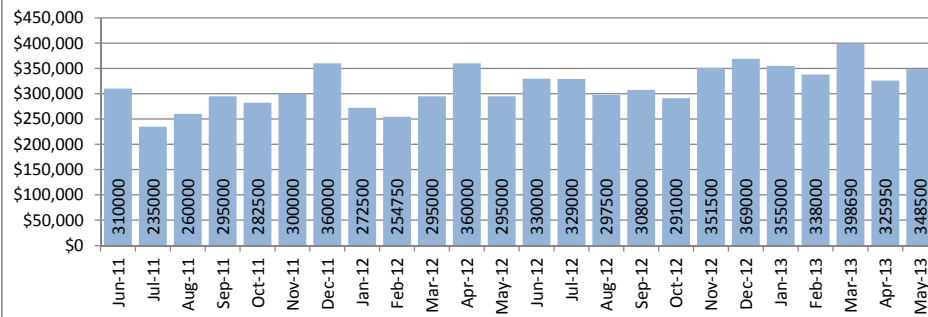
Closed Sales : Single Family Homes



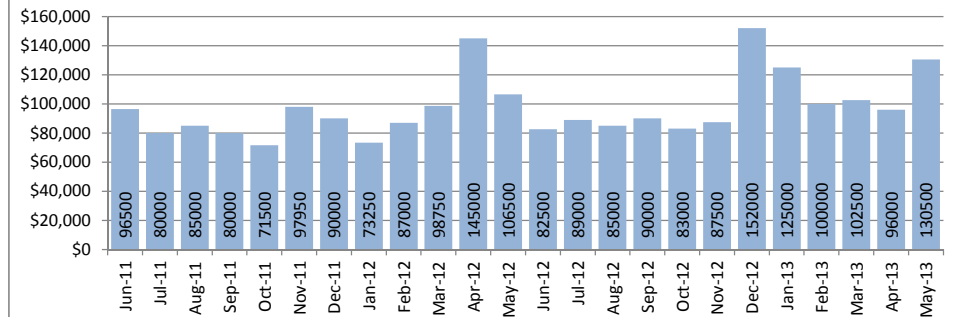
Closed Sales : Condos



Median Sales Price : Single Family Homes



Median Sales Price : Condos



SOURCE: Honolulu Board of REALTORS® , compiled from MLS data.

Local Market Update

May 2013



Makakilo

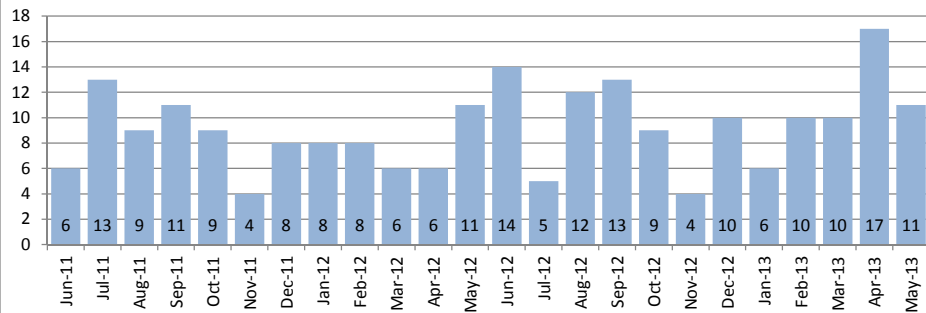
1-9-2 to 1-9-3

May 2013

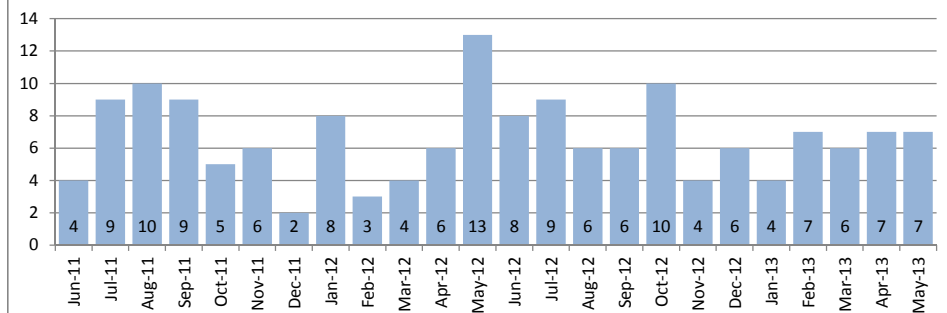
Single Family Homes	May			Year to Date		
	2013	2012	Change	2013	2012	Change
New Listings	26	19	37%	85	103	-17%
Closed Sales	11	11	0%	54	41	32%
Median Sales Price	\$595,000	\$487,500	22%	\$565,000	\$525,000	8%
Percent of Original List Price Received	101.7%	97.7%	4%	99.1%	96.3%	3%
Median Days on Market Until Sale	63	60	5%	24	60	-60%
Inventory of Homes for Sale	49	48	2%	--	--	--

Condos	May			Year to Date		
	2013	2012	Change	2013	2012	Change
New Listings	16	10	60%	50	69	-28%
Closed Sales	7	13	-46%	31	34	-9%
Median Sales Price	\$225,000	\$250,000	-10%	\$237,000	\$253,500	-7%
Percent of Original List Price Received	97.9%	100.0%	-2%	95.2%	98.4%	-3%
Median Days on Market Until Sale	11	11	0%	17	18	-6%
Inventory of Homes for Sale	24	26	-8%	--	--	--

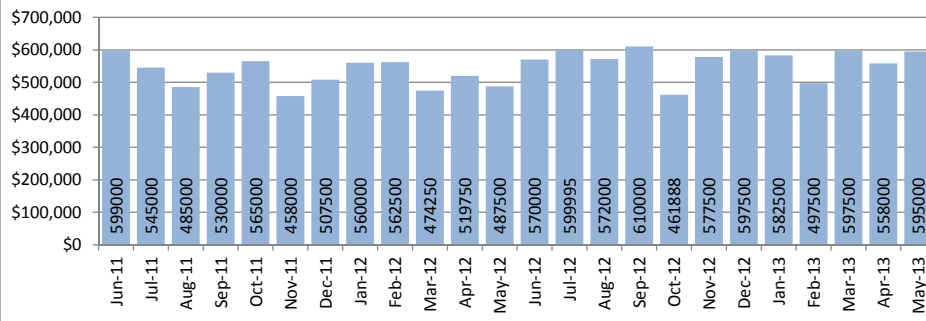
Closed Sales : Single Family Homes



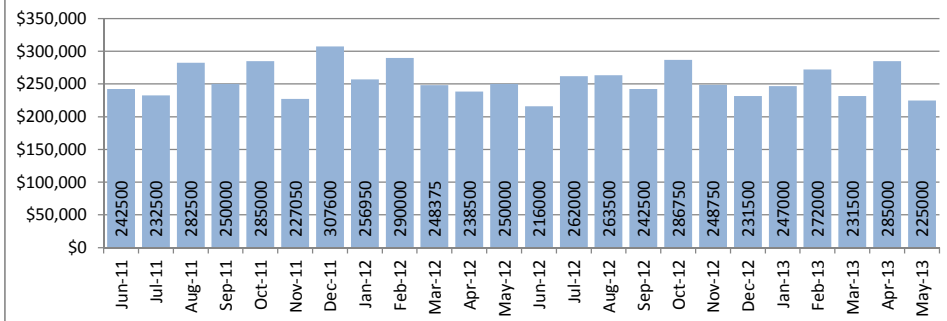
Closed Sales : Condos



Median Sales Price : Single Family Homes



Median Sales Price : Condos



SOURCE: Honolulu Board of REALTORS® , compiled from MLS data.

Local Market Update

May 2013



Makiki - Moiliili

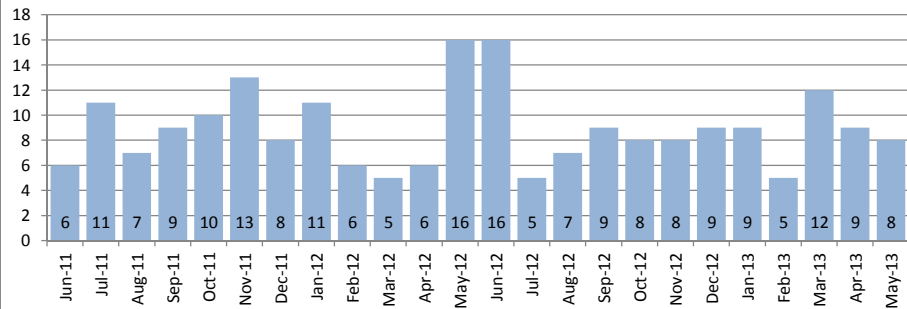
1-2-4 to 1-2-9 (except 1-2-6)

May 2013

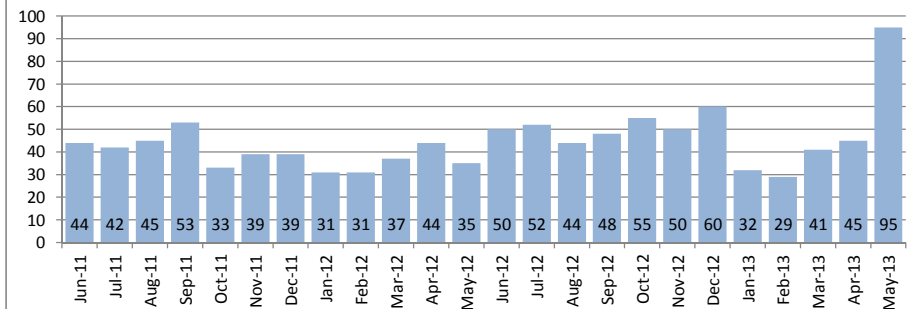
Single Family Homes	May			Year to Date		
	2013	2012	Change	2013	2012	Change
New Listings	7	17	-59%	48	93	-48%
Closed Sales	8	16	-50%	43	44	-2%
Median Sales Price	\$1,034,000	\$812,500	27%	\$920,000	\$862,500	7%
Percent of Original List Price Received	100.5%	97.1%	4%	96.8%	90.8%	7%
Median Days on Market Until Sale	47	15	213%	33	29	14%
Inventory of Homes for Sale	33	45	-27%	--	--	--

Condos	May			Year to Date		
	2013	2012	Change	2013	2012	Change
New Listings	56	50	12%	293	414	-29%
Closed Sales	95	35	171%	243	182	34%
Median Sales Price	\$305,000	\$295,000	3%	\$315,000	\$304,500	3%
Percent of Original List Price Received	98.4%	92.8%	6%	97.1%	95.8%	1%
Median Days on Market Until Sale	39	26	50%	25	30	-17%
Inventory of Homes for Sale	151	179	-16%	--	--	--

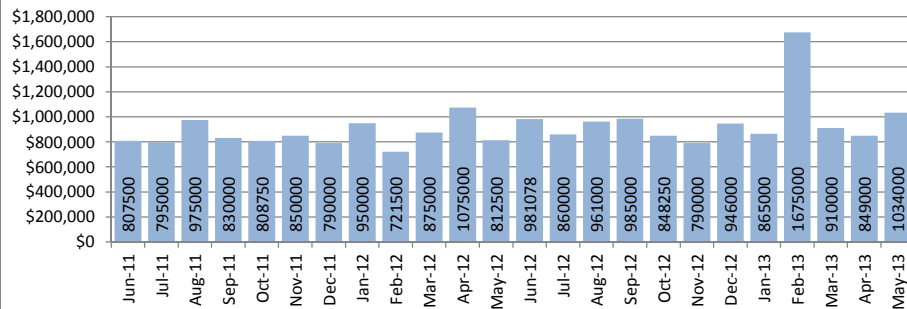
Closed Sales : Single Family Homes



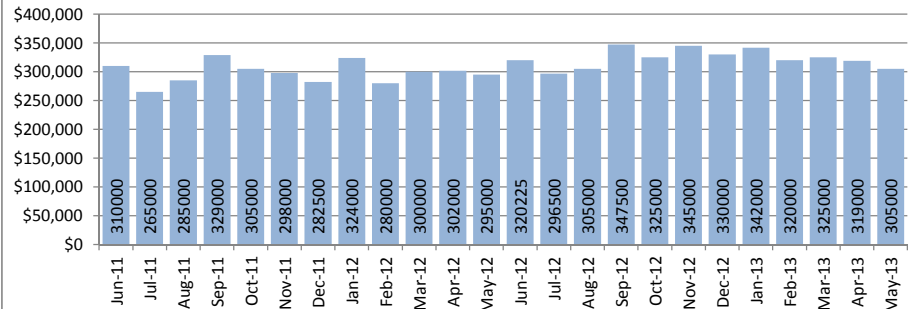
Closed Sales : Condos



Median Sales Price : Single Family Homes



Median Sales Price : Condos



SOURCE: Honolulu Board of REALTORS® , compiled from MLS data.

Local Market Update

May 2013



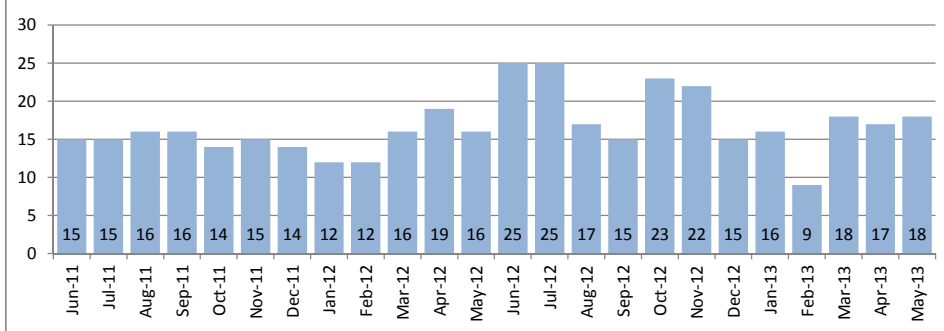
Mililani
Selected 1-9-4 to 1-9-5

May 2013

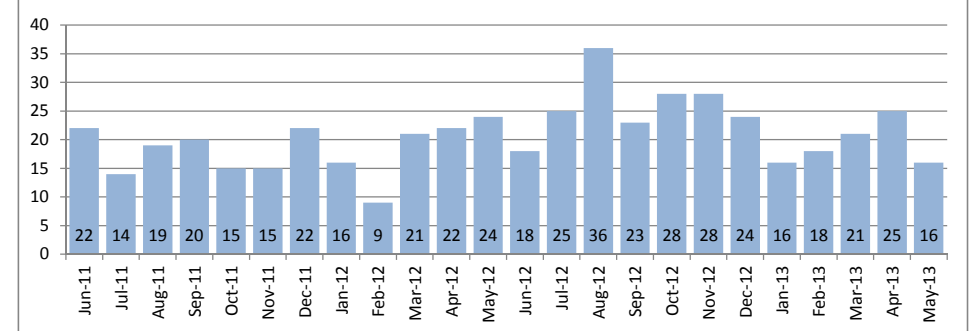
Single Family Homes	May			Year to Date		
	2013	2012	Change	2013	2012	Change
New Listings	33	32	3%	130	172	-24%
Closed Sales	18	16	13%	57	79	-28%
Median Sales Price	\$625,000	\$598,500	4%	\$620,000	\$605,000	2%
Percent of Original List Price Received	104.3%	99.8%	5%	100.0%	97.6%	2%
Median Days on Market Until Sale	26	30	-13%	22	50	-56%
Inventory of Homes for Sale	53	60	-12%	--	--	--

Condos	May			Year to Date		
	2013	2012	Change	2013	2012	Change
New Listings	25	36	-31%	125	220	-43%
Closed Sales	16	24	-33%	97	105	-8%
Median Sales Price	\$303,000	\$250,625	21%	\$300,000	\$253,000	19%
Percent of Original List Price Received	97.9%	94.9%	3%	100.2%	95.5%	5%
Median Days on Market Until Sale	30	30	0%	20	27	-26%
Inventory of Homes for Sale	40	90	-56%	--	--	--

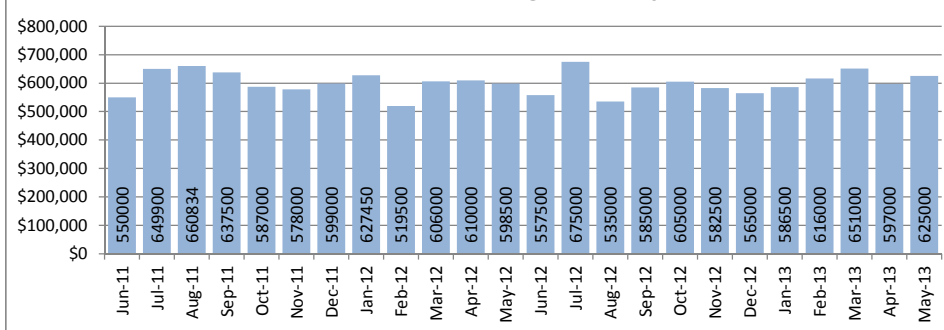
Closed Sales : Single Family Homes



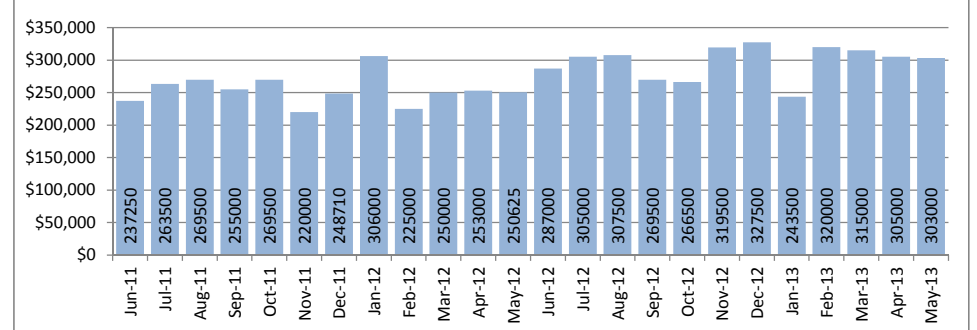
Closed Sales : Condos



Median Sales Price : Single Family Homes



Median Sales Price : Condos



SOURCE: Honolulu Board of REALTORS®, compiled from MLS data.

Local Market Update

May 2013

Moanalua - Salt Lake

1-1-1

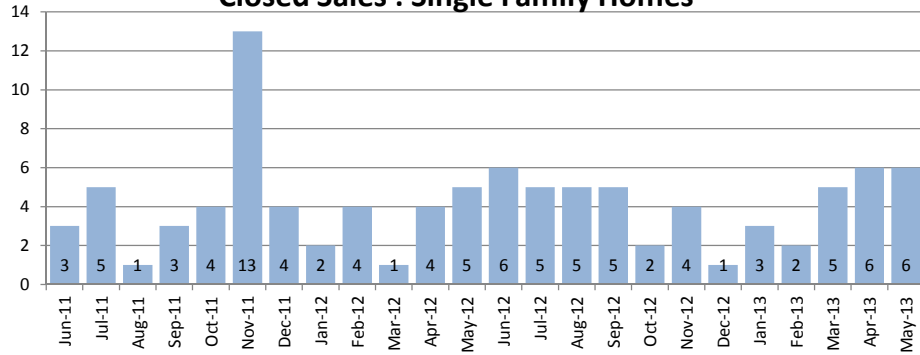


May 2013

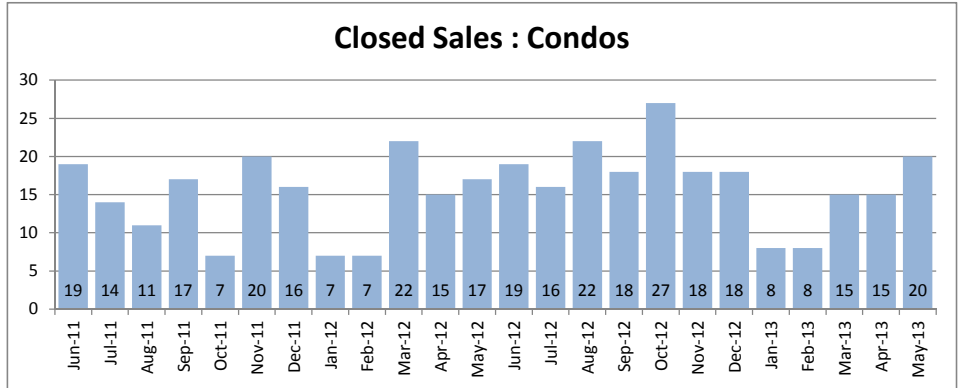
Single Family Homes	May			Year to Date		
	2013	2012	Change	2013	2012	Change
New Listings	10	7	43%	34	38	-11%
Closed Sales	6	5	20%	22	16	38%
Median Sales Price	\$822,500	\$678,000	21%	\$780,000	\$591,500	32%
Percent of Original List Price Received	101.9%	104.3%	-2%	103.0%	94.6%	9%
Median Days on Market Until Sale	29	11	164%	18	21	-14%
Inventory of Homes for Sale	15	20	-25%	--	--	--

Condos	May			Year to Date		
	2013	2012	Change	2013	2012	Change
New Listings	24	21	14%	97	138	-30%
Closed Sales	20	17	18%	67	68	-1%
Median Sales Price	\$360,000	\$277,000	30%	\$299,000	\$266,500	12%
Percent of Original List Price Received	100.3%	99.6%	1%	100.0%	93.8%	7%
Median Days on Market Until Sale	22	16	38%	21	17	24%
Inventory of Homes for Sale	50	53	-6%	--	--	--

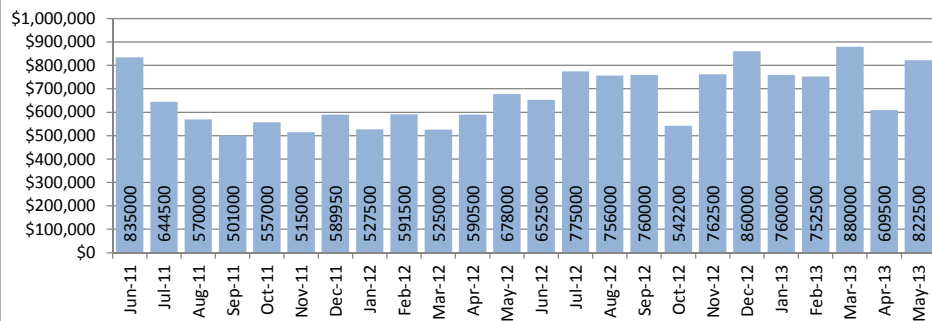
Closed Sales : Single Family Homes



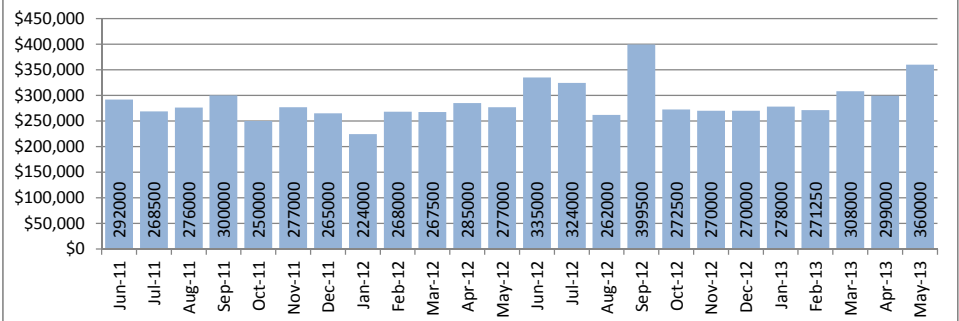
Closed Sales : Condos



Median Sales Price : Single Family Homes



Median Sales Price : Condos



SOURCE: Honolulu Board of REALTORS®, compiled from MLS data.

Local Market Update

May 2013

North Shore

1-5-6 to 1-6-9

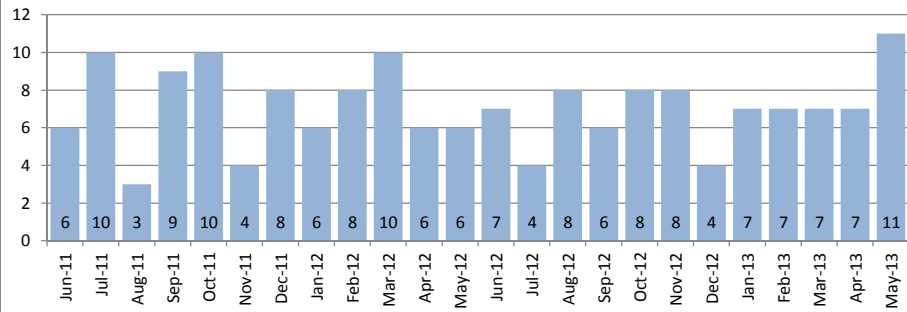


May 2013

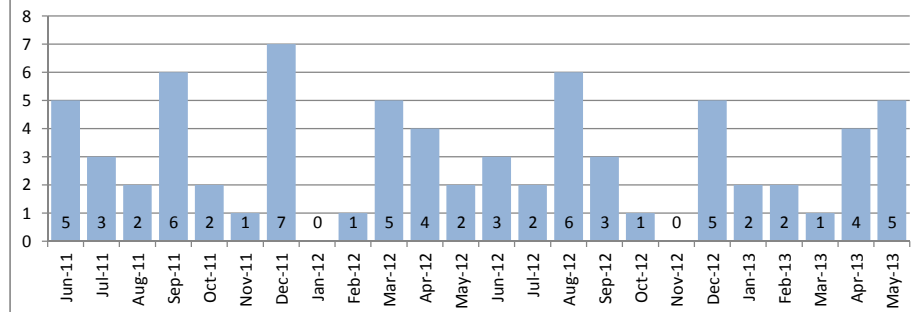
Single Family Homes	May			Year to Date		
	2013	2012	Change	2013	2012	Change
New Listings	19	12	58%	81	104	-22%
Closed Sales	11	6	83%	39	37	5%
Median Sales Price	\$705,000	\$682,500	3%	\$705,000	\$689,000	2%
Percent of Original List Price Received	88.1%	99.4%	-11%	97.2%	92.5%	5%
Median Days on Market Until Sale	42	111	-62%	32	74	-57%
Inventory of Homes for Sale	70	60	17%	--	--	--

Condos	May			Year to Date		
	2013	2012	Change	2013	2012	Change
New Listings	3	7	-57%	24	40	-40%
Closed Sales	5	2	150%	14	12	17%
Median Sales Price	\$249,000	\$192,950	29%	\$242,000	\$212,500	14%
Percent of Original List Price Received	100.0%	90.8%	10%	99.0%	90.8%	9%
Median Days on Market Until Sale	15	141	-89%	36	95	-62%
Inventory of Homes for Sale	14	22	-36%	--	--	--

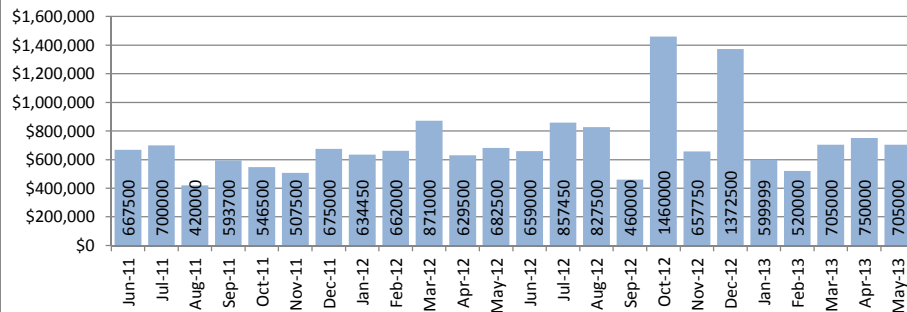
Closed Sales : Single Family Homes



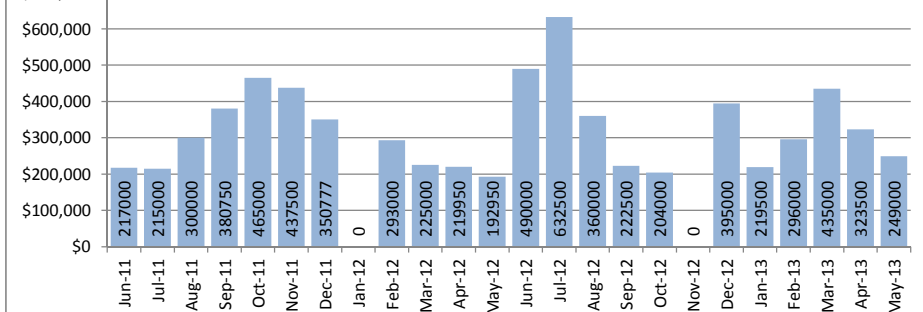
Closed Sales : Condos



Median Sales Price : Single Family Homes



Median Sales Price : Condos



SOURCE: Honolulu Board of REALTORS®, compiled from MLS data.

Local Market Update

May 2013

Pearl City - Aiea

1-9-6 to 1-9-9

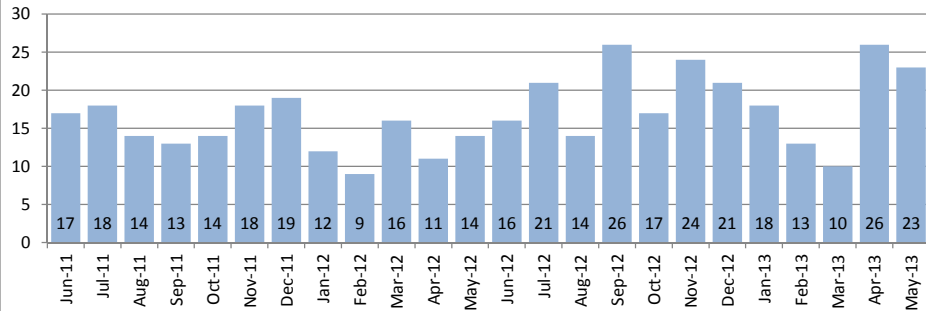


May 2013

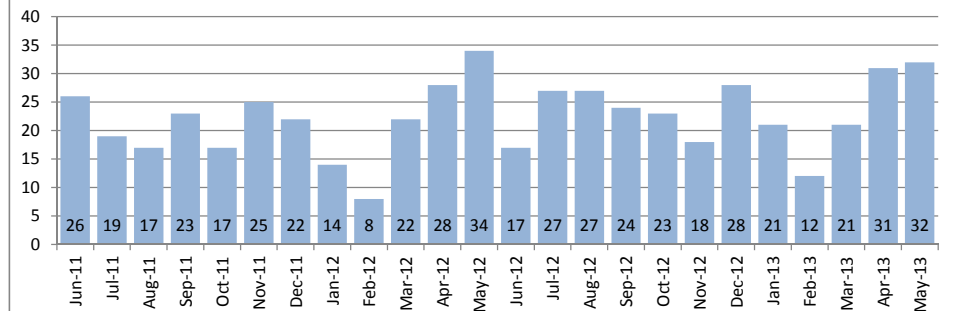
Single Family Homes	May			Year to Date		
	2013	2012	Change	2013	2012	Change
New Listings	23	19	21%	122	144	-15%
Closed Sales	23	14	64%	92	63	46%
Median Sales Price	\$618,000	\$622,500	-1%	\$577,500	\$585,000	-1%
Percent of Original List Price Received	96.7%	99.2%	-3%	96.3%	94.5%	2%
Median Days on Market Until Sale	34	21	62%	36	32	13%
Inventory of Homes for Sale	59	55	7%	--	--	--

Condos	May			Year to Date		
	2013	2012	Change	2013	2012	Change
New Listings	33	27	22%	162	227	-29%
Closed Sales	32	34	-6%	119	113	5%
Median Sales Price	\$277,500	\$268,500	3%	\$269,900	\$275,000	-2%
Percent of Original List Price Received	98.2%	95.4%	3%	98.1%	96.5%	2%
Median Days on Market Until Sale	30	46	-35%	25	44	-43%
Inventory of Homes for Sale	61	106	-42%	--	--	--

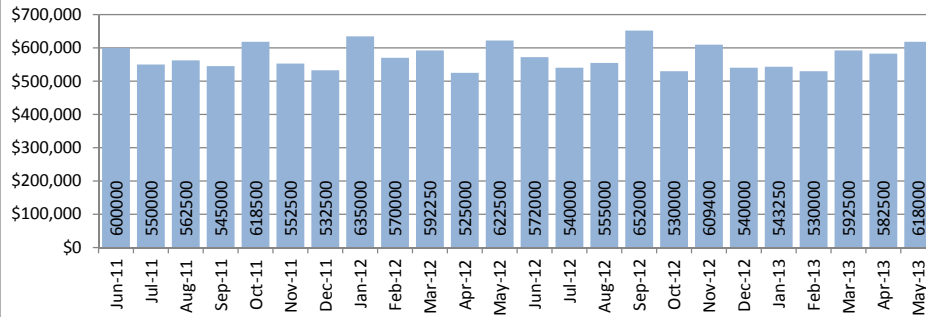
Closed Sales : Single Family Homes



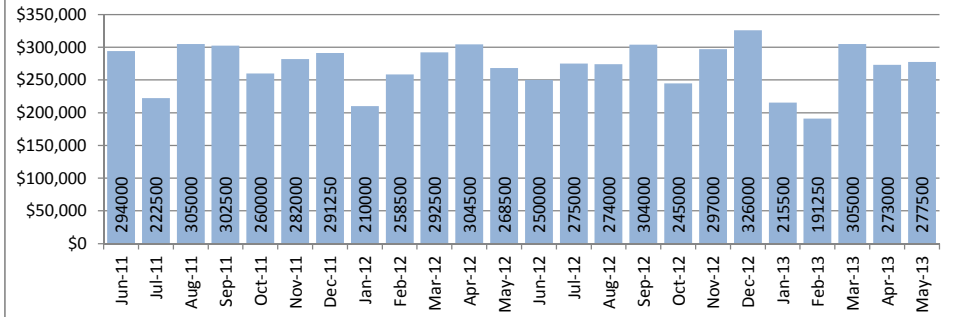
Closed Sales : Condos



Median Sales Price : Single Family Homes



Median Sales Price : Condos



SOURCE: Honolulu Board of REALTORS®, compiled from MLS data.

Local Market Update

May 2013



Wahiawa

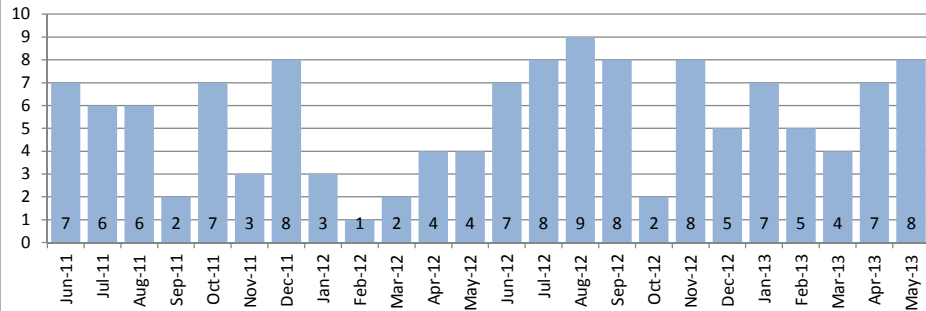
1-7-1 to 1-7-7

May 2013

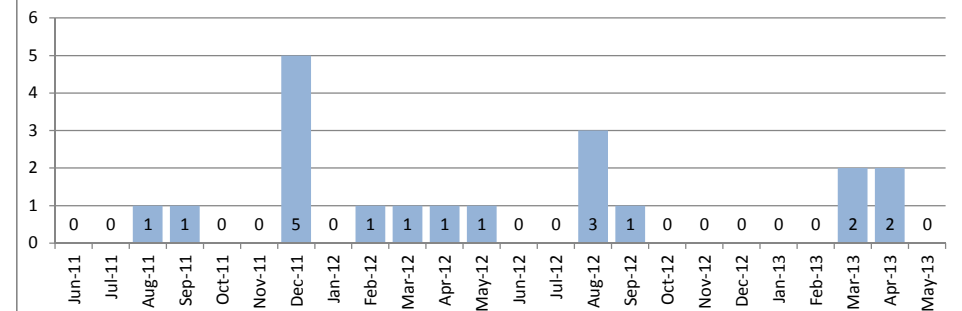
Single Family Homes	May			Year to Date		
	2013	2012	Change	2013	2012	Change
New Listings	8	9	-11%	40	58	-31%
Closed Sales	8	4	100%	31	14	121%
Median Sales Price	\$383,500	\$425,000	-10%	\$405,000	\$357,500	13%
Percent of Original List Price Received	99.9%	98.0%	2%	96.4%	92.9%	4%
Median Days on Market Until Sale	11	31	-65%	15	51	-71%
Inventory of Homes for Sale	22	29	-24%	--	--	--

Condos	May			Year to Date		
	2013	2012	Change	2013	2012	Change
New Listings	1	3	-67%	6	16	-63%
Closed Sales	0	1	-	7	5	40%
Median Sales Price	\$0	\$143,500	-	\$145,000	\$115,000	26%
Percent of Original List Price Received	0.0%	99.0%	-	93.5%	79.3%	18%
Median Days on Market Until Sale	0	71	-	41	71	-42%
Inventory of Homes for Sale	6	12	-50%	--	--	--

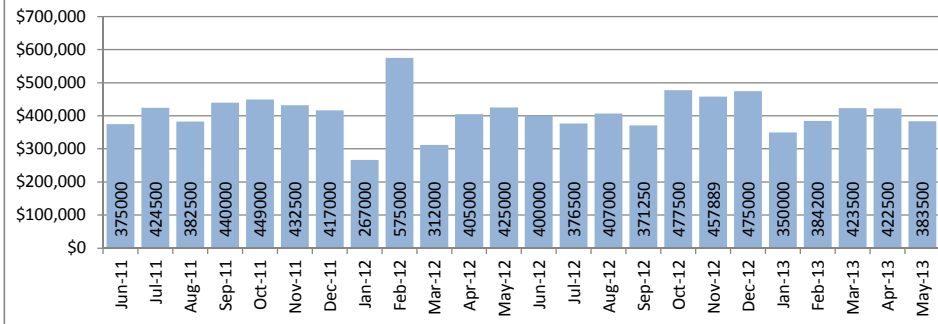
Closed Sales : Single Family Homes



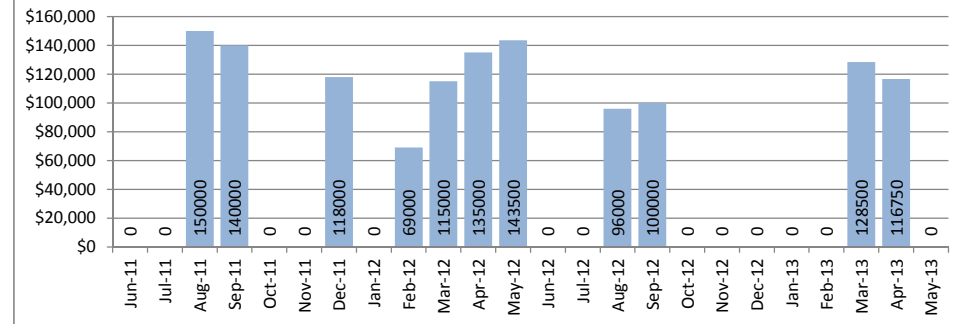
Closed Sales : Condos



Median Sales Price : Single Family Homes



Median Sales Price : Condos



SOURCE: Honolulu Board of REALTORS® , compiled from MLS data.

Local Market Update

May 2013



Waialae - Kahala

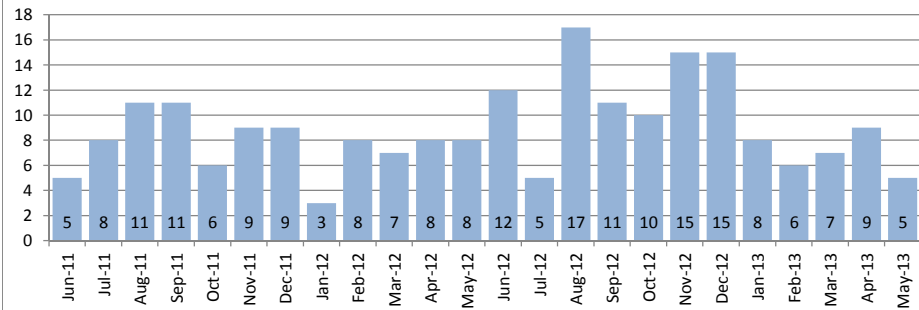
1-3-5

May 2013

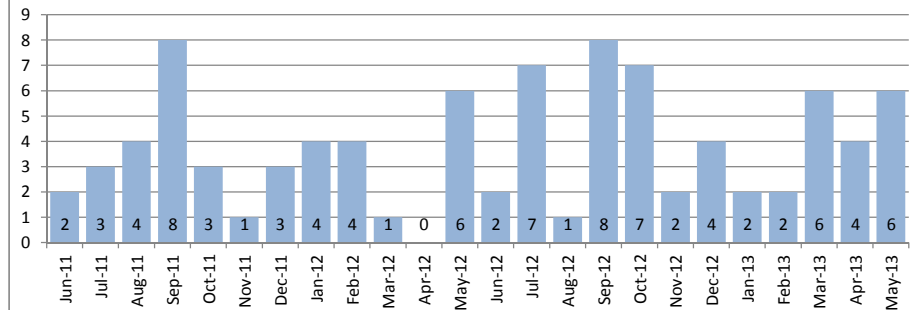
Single Family Homes	May			Year to Date		
	2013	2012	Change	2013	2012	Change
New Listings	22	12	83%	62	92	-33%
Closed Sales	5	8	-38%	35	34	3%
Median Sales Price	\$1,580,000	\$1,550,000	2%	\$1,600,000	\$1,358,500	18%
Percent of Original List Price Received	97.1%	97.0%	0%	98.3%	90.8%	8%
Median Days on Market Until Sale	25	75	-67%	27	51	-47%
Inventory of Homes for Sale	47	51	-8%	--	--	--

Condos	May			Year to Date		
	2013	2012	Change	2013	2012	Change
New Listings	4	3	33%	25	36	-31%
Closed Sales	6	6	0%	20	16	25%
Median Sales Price	\$322,500	\$385,000	-16%	\$430,000	\$405,425	6%
Percent of Original List Price Received	91.2%	88.1%	4%	92.9%	95.4%	-3%
Median Days on Market Until Sale	63	60	5%	50	34	47%
Inventory of Homes for Sale	17	20	-15%	--	--	--

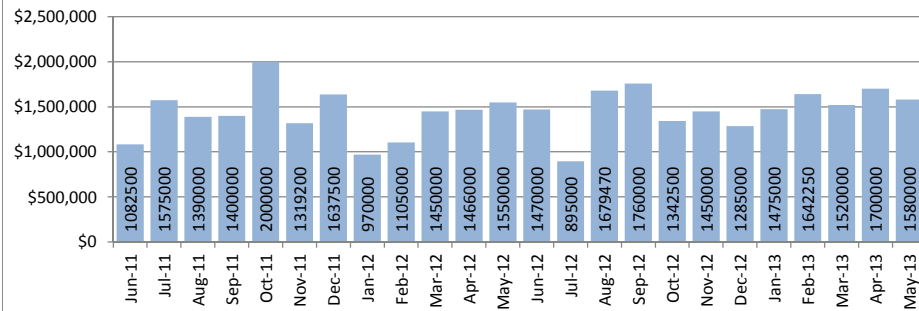
Closed Sales : Single Family Homes



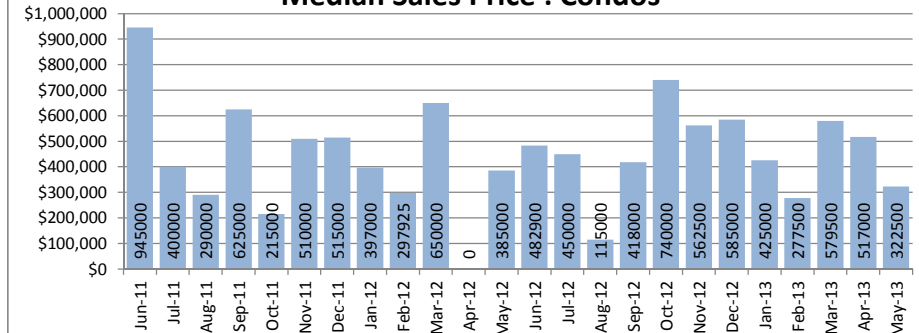
Closed Sales : Condos



Median Sales Price : Single Family Homes



Median Sales Price : Condos



SOURCE: Honolulu Board of REALTORS® , compiled from MLS data.

Local Market Update

May 2013



Waikiki

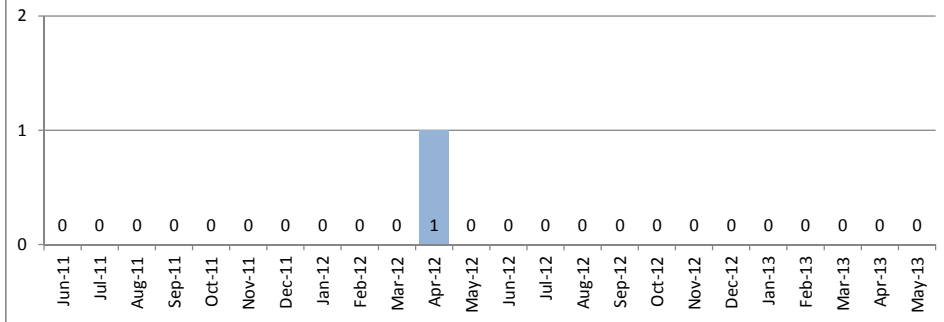
1-2-6

May 2013

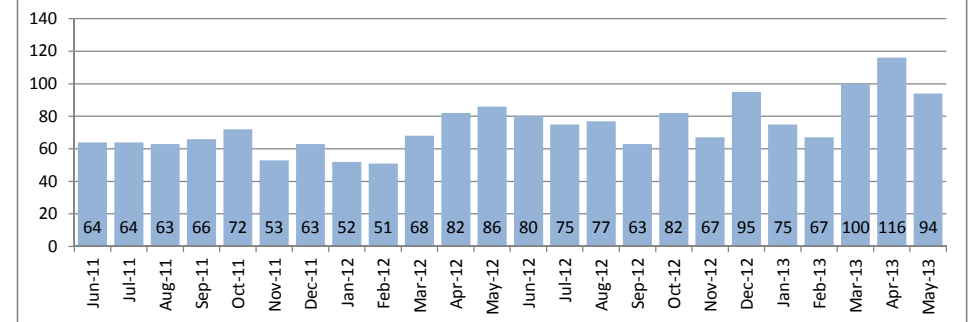
Single Family Homes	May			Year to Date		
	2013	2012	Change	2013	2012	Change
New Listings	0	0	--	1	1	--
Closed Sales	0	0	--	0	1	--
Median Sales Price	\$0	\$0	--	\$0	\$835,000	--
Percent of Original List Price Received	0.0%	0.0%	--	0.0%	92.9%	--
Median Days on Market Until Sale	0	0	--	0	42	--
Inventory of Homes for Sale	1	0	--	--	--	--

Condos	May			Year to Date		
	2013	2012	Change	2013	2012	Change
New Listings	126	130	-3%	641	903	-29%
Closed Sales	94	86	9%	465	350	33%
Median Sales Price	\$327,000	\$266,500	23%	\$316,100	\$284,000	11%
Percent of Original List Price Received	94.8%	90.6%	5%	94.9%	90.2%	5%
Median Days on Market Until Sale	31	46	-33%	36	52	-31%
Inventory of Homes for Sale	412	528	-22%	--	--	--

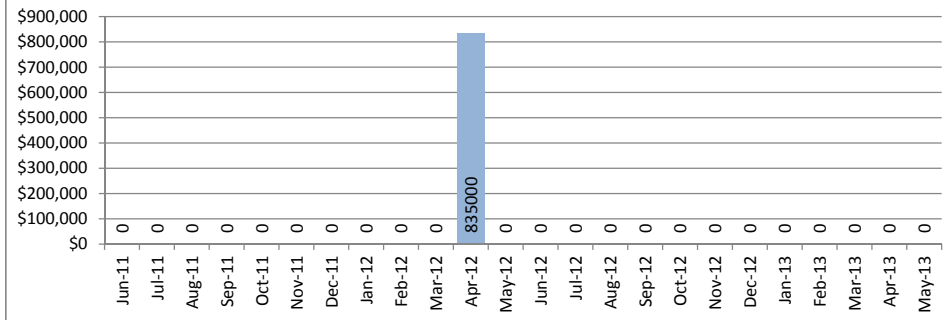
Closed Sales : Single Family Homes



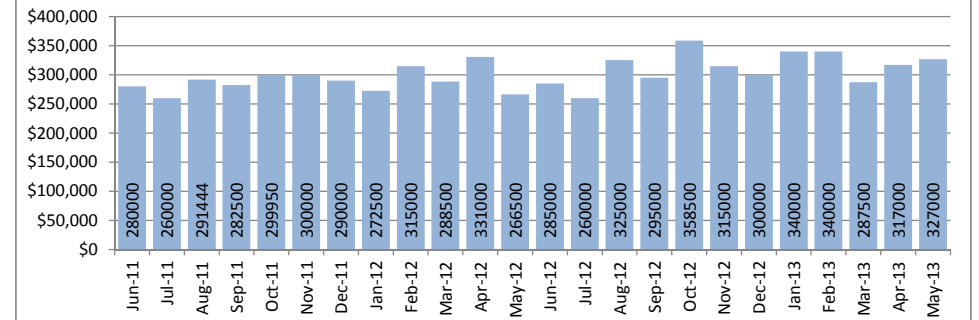
Closed Sales : Condos



Median Sales Price : Single Family Homes



Median Sales Price : Condos



SOURCE: Honolulu Board of REALTORS®, compiled from MLS data.

Local Market Update

May 2013



Waipahu

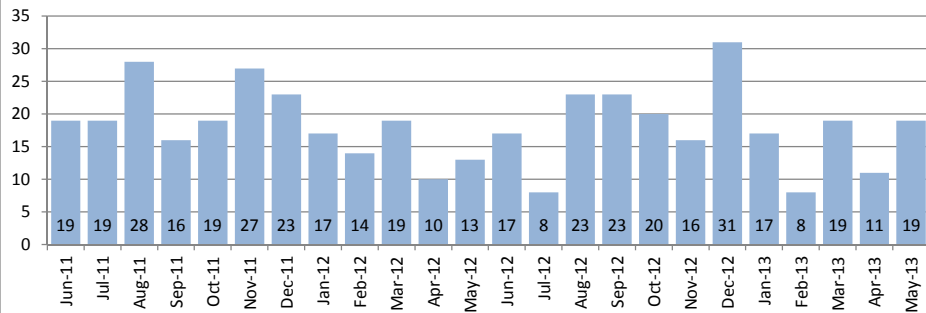
1-9-4

May 2013

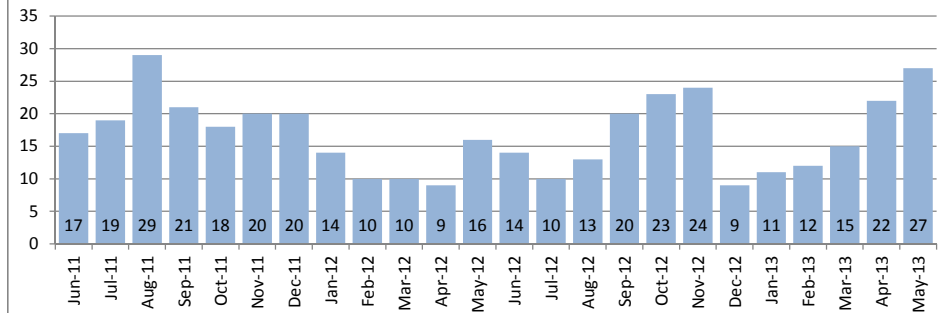
Single Family Homes	May			Year to Date		
	2013	2012	Change	2013	2012	Change
New Listings	22	16	38%	103	140	-26%
Closed Sales	19	13	46%	99	72	38%
Median Sales Price	\$529,000	\$565,000	-6%	\$550,000	\$485,000	13%
Percent of Original List Price Received	98.1%	95.8%	2%	98.4%	95.1%	3%
Median Days on Market Until Sale	24	79	-70%	19	42	-55%
Inventory of Homes for Sale	57	46	24%	--	--	--

Condos	May			Year to Date		
	2013	2012	Change	2013	2012	Change
New Listings	17	27	-37%	113	131	-14%
Closed Sales	27	16	69%	87	49	78%
Median Sales Price	\$285,000	\$253,000	13%	\$266,500	\$265,800	0%
Percent of Original List Price Received	103.6%	93.0%	11%	99.1%	96.7%	2%
Median Days on Market Until Sale	14	30	-53%	15	30	-50%
Inventory of Homes for Sale	59	64	-8%	--	--	--

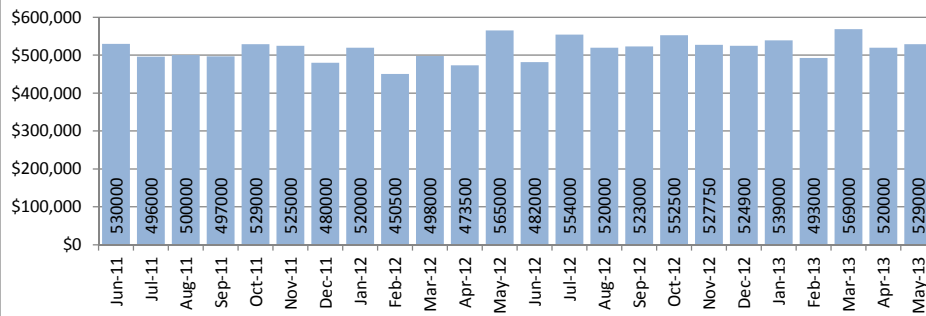
Closed Sales : Single Family Homes



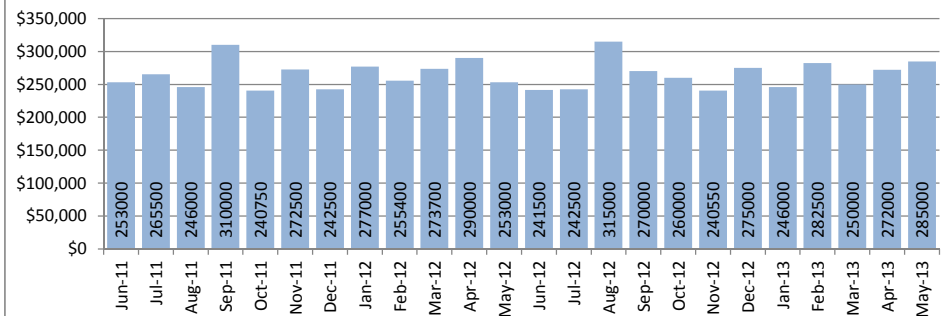
Closed Sales : Condos



Median Sales Price : Single Family Homes



Median Sales Price : Condos



SOURCE: Honolulu Board of REALTORS® , compiled from MLS data.

Local Market Update

May 2013



Windward Coast

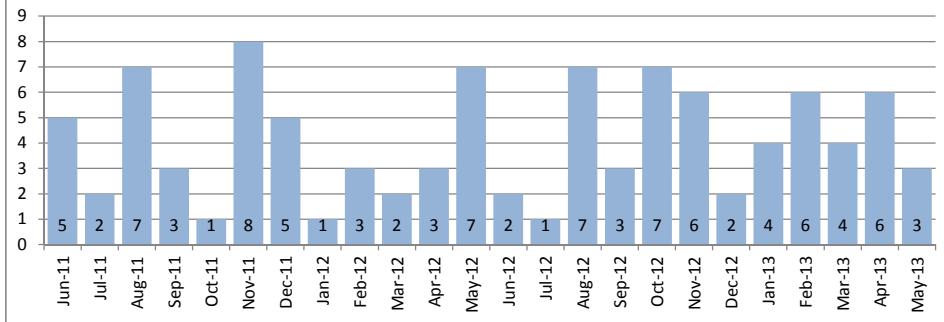
1-4-8 to 1-5-5

May 2013

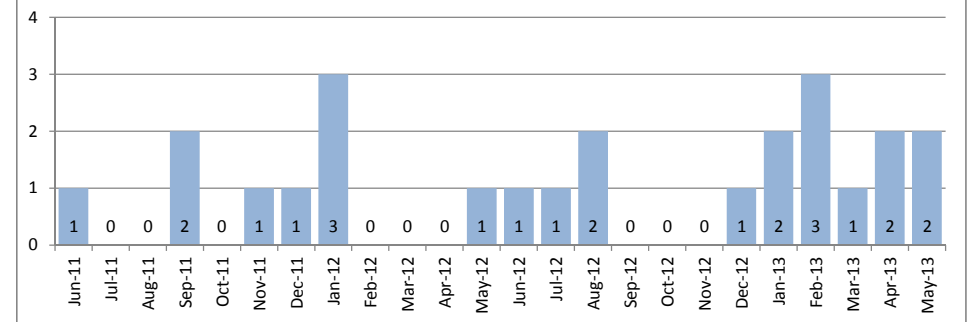
Single Family Homes	May			Year to Date		
	2013	2012	Change	2013	2012	Change
New Listings	7	11	-36%	39	67	-42%
Closed Sales	3	7	-57%	23	18	28%
Median Sales Price	\$615,000	\$589,000	4%	\$565,000	\$455,000	24%
Percent of Original List Price Received	96.2%	81.2%	18%	97.6%	99.5%	-2%
Median Days on Market Until Sale	30	78	-62%	47	47	0%
Inventory of Homes for Sale	36	52	-31%	--	--	--

Condos	May			Year to Date		
	2013	2012	Change	2013	2012	Change
New Listings	0	3	-100%	17	24	-29%
Closed Sales	2	1	100%	10	4	150%
Median Sales Price	\$197,000	\$215,000	-8%	\$192,500	\$187,500	3%
Percent of Original List Price Received	97.5%	93.9%	4%	95.3%	94.0%	1%
Median Days on Market Until Sale	64	120	-47%	52	142	-63%
Inventory of Homes for Sale	12	15	-20%	--	--	--

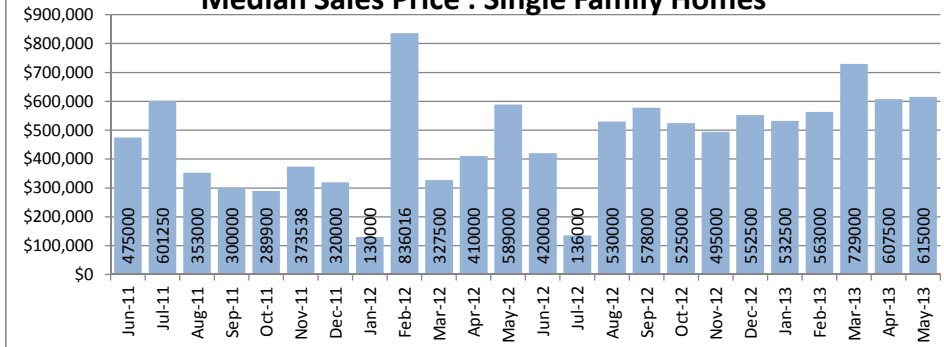
Closed Sales : Single Family Homes



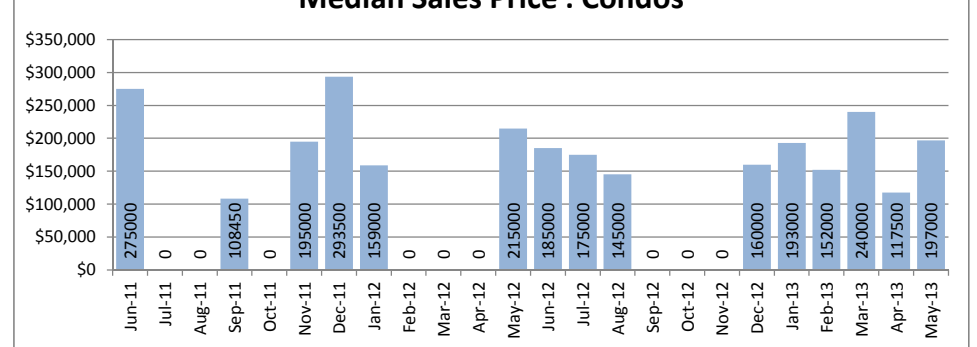
Closed Sales : Condos



Median Sales Price : Single Family Homes



Median Sales Price : Condos



SOURCE: Honolulu Board of REALTORS®, compiled from MLS data.

Single Family Solds - May 2013 vs 2012 (Based on region and neighborhood groupings as listed in MLS) - Page 1 of 4

Central Region	2012 Median	2013 Median	+/-	+/-	2012 Sold	2013 Sold	+/-	+/-
LAUNANI VALLEY	\$ 512,500	\$ 527,500	2.9%	\$15,000	2	2	0.0%	0
MILILANI AREA	\$ 593,750	\$ 573,000	-3.5%	-\$20,750	6	7	16.7%	1
MILILANI MAUKA	\$ 650,000	\$ 655,000	0.8%	\$5,000	9	8	-11.1%	-1
WAHIAWA AREA	\$ 310,000	\$ 354,500	14.4%	\$44,500	2	4	100.0%	2
WHITMORE VILLAGE	\$ 460,000	\$ 309,000	-32.8%	-\$151,000	1	2	100.0%	1
WAIPIO ACRES/WAIKALANI HEIGHTS	\$ -	\$ 370,000	-	\$370,000	0	1	-	1
WAHIAWA HEIGHTS	\$ 596,000	\$ 674,000	13.1%	\$78,000	1	2	100.0%	1
Central Region	\$ 596,000	\$ 576,500	-3.3%	-\$19,500	21	26	23.8%	5

Diamond Hd Region	2012 Median	2013 Median	+/-	+/-	2012 Sold	2013 Sold	+/-	+/-
AINA HAINA AREA	\$ 805,000	\$ 808,750	0.5%	\$3,750	5	2	-60.0%	-3
AINA HAINA BEACH	\$ -	\$ 1,419,500	-	\$1,419,500	0	2	-	2
DIAMOND HEAD	\$ 1,350,000	\$ 2,550,000	88.9%	\$1,200,000	2	3	50.0%	1
HAWAII LOA RIDGE	\$ 1,574,000	\$ 1,850,000	17.5%	\$276,000	2	3	50.0%	1
KAHALA AREA	\$ 1,999,999	\$ 1,427,500	-28.6%	-\$572,499	5	4	-20.0%	-1
KAILANI IKI	\$ 720,000	\$ -	-100.0%	-\$720,000	2	0	-100.0%	-2
KAI NANI	\$ -	\$ 4,100,000	-	\$4,100,000	0	1	-	1
KAIMUKI	\$ 740,000	\$ 785,000	6.1%	\$45,000	7	3	-57.1%	-4
KAPAHULU	\$ 759,000	\$ 935,000	23.2%	\$176,000	5	2	-60.0%	-3
KULIOUOU	\$ -	\$ 875,000	-	\$875,000	0	1	-	1
MAUNALANI HEIGHTS	\$ 987,500	\$ 2,550,000	158.2%	\$1,562,500	2	1	-50.0%	-1
NIU VALLEY	\$ -	\$ 975,000	-	\$975,000	0	3	-	3
NIU BEACH	\$ 1,700,000	\$ -	-100.0%	-\$1,700,000	2	0	-100.0%	-2
PAIKO LAGOON	\$ -	\$ 754,988	-	\$754,988	0	1	-	1
PALOLO	\$ 383,500	\$ 600,000	56.5%	\$216,500	4	7	75.0%	3
PUUPANINI	\$ 2,300,000	\$ -	-100.0%	-\$2,300,000	1	0	-100.0%	-1
ST. LOUIS	\$ 703,000	\$ -	-100.0%	-\$703,000	4	0	-100.0%	-4
WAIALAE IKI	\$ 1,100,000	\$ -	-100.0%	-\$1,100,000	1	0	-100.0%	-1
WILHELMINA	\$ 615,000	\$ -	-100.0%	-\$615,000	2	0	-100.0%	-2
Diamond Hd Region	\$ 787,000	\$ 950,000	20.7%	\$163,000	44	33	-25.0%	-11

Hawaii Kai Region	2012 Median	2013 Median	+/-	+/-	2012 Sold	2013 Sold	+/-	+/-
KALAMA VALLEY	\$ -	\$ 734,500	-	\$734,500	0	4	-	4
KAMEHAMEHA RIDGE	\$ -	\$ 1,268,888	-	\$1,268,888	0	1	-	1
KOKO HEAD TERRAC	\$ -	\$ 734,000	-	\$734,000	0	1	-	1
KOKO KAI	\$ 4,100,000	\$ -	-100.0%	-\$4,100,000	1	0	-100.0%	-1
LAULIMA	\$ 785,000	\$ -	-100.0%	-\$785,000	0	1	-	1
MARINERS RIDGE	\$ 1,249,000	\$ -	-100.0%	-\$1,249,000	1	0	-100.0%	-1
NAPALI HAWEHO	\$ 1,919,500	\$ 1,675,000	-12.7%	-\$244,500	1	1	0.0%	0
WEST MARINA	\$ 1,620,000	\$ 1,060,000	-34.6%	-\$560,000	1	3	200.0%	2
TRIANGLE	\$ 1,890,000	\$ 1,250,000	-33.9%	-\$640,000	2	1	-50.0%	-1
Hawaii Kai Region	\$ 1,769,750	\$ 930,500	-47.4%	-\$839,250	6	12	100.0%	6

Single Family Solds - May 2013 vs 2012 (Based on region and neighborhood groupings as listed in MLS) - Page 2 of 4

Leeward Region	2012 Median	2013 Median	+/-	+/-	2012 Sold	2013 Sold	+/-	+/-
LUALUALEI	\$ -	\$ 360,000	-	\$360,000	0	1	-	1
MAILI	\$ 267,500	\$ 330,000	23.4%	\$62,500	6	7	16.7%	1
MAILI SEA-MAKALAE 1	\$ 415,312	\$ 410,725	-1.1%	-\$4,587	2	3	50.0%	1
MAILI SEA-KAIMALINO	\$ -	\$ 375,000	-	\$375,000	0	1	-	1
MAILI SEA-NOHOKAI	\$ -	\$ 435,000	-	\$435,000	0	1	-	1
MAKAHA	\$ 312,625	\$ 230,500	-26.3%	-\$82,125	2	2	0.0%	0
WAIANAE	\$ 295,000	\$ 95,000	-67.8%	-\$200,000	5	1	-80.0%	-4
Leeward Region	\$ 295,000	\$ 348,500	18.1%	\$53,500	15	16	6.7%	1

Ewa Plain Region	2012 Median	2013 Median	+/-	+/-	2012 Sold	2013 Sold	+/-	+/-
EWA BEACH	\$ 345,000	\$ 427,000	23.8%	\$82,000	3	4	33.3%	1
EWA GEN BREAKERS	\$ 545,000	\$ -	-100.0%	-\$545,000	1	0	-100.0%	-1
EWA GEN ALII COVE	\$ -	\$ 390,000	-	\$390,000	0	2	-	2
EWA GEN CARRIAGES	\$ -	\$ 646,000	-	\$646,000	0	1	-	1
EWA GEN CORTEBELLA	\$ -	\$ 304,500	-	\$304,500	0	2	-	2
EWA GEN KULA LEI	\$ -	\$ 480,000	-	\$480,000	0	1	-	1
EWA GEN LAS BRISAS	\$ 325,000	\$ 405,000	24.6%	\$80,000	1	1	0.0%	0
EWA GEN LATITUDES	\$ 525,000	\$ 637,000	21.3%	\$112,000	1	1	0.0%	0
EWA GEN LAULANI-TIDES	\$ -	\$ 477,000	-	\$477,000	0	2	-	2
EWA GEN MONTECITO/TUSCANY	\$ -	\$ 469,000	-	\$469,000	0	2	-	2
EWA GEN LOMBARD WAY	\$ -	\$ 356,500	-	\$356,500	0	2	-	2
EWA GEN SODA CREEK	\$ 413,000	\$ -	-100.0%	-\$413,000	1	0	-100.0%	-1
EWA GEN TERRAZZA	\$ 389,500	\$ -	-100.0%	-\$389,500	2	0	-100.0%	-2
EWA GEN TIBURON	\$ 401,000	\$ 445,000	11.0%	\$44,000	1	3	200.0%	2
EWA GEN TUSCANY II	\$ 409,500	\$ 483,000	17.9%	\$73,500	2	1	-50.0%	-1
EWA GEN WOODBRIDGE	\$ -	\$ 630,000	-	\$630,000	0	1	-	1
EWA VILLAGES	\$ -	\$ 371,500	-	\$371,500	0	1	-	1
HOAKALEI-KA MAKANA	\$ 645,000	\$ 625,000	-3.1%	-\$20,000	1	2	100.0%	1
HUELANI	\$ 440,000	\$ -	-100.0%	-\$440,000	1	0	-100.0%	-1
KAPOLEI	\$ 396,000	\$ 459,000	15.9%	\$63,000	1	3	200.0%	2
KAPOLEI-AELOA	\$ -	\$ 485,000	-	\$485,000	0	1	-	1
KAPOLEI-KAI	\$ 525,000	\$ -	-100.0%	-\$525,000	1	0	-100.0%	-1
KAPOLEI-IWALANI	\$ 640,000	\$ -	-100.0%	-\$640,000	1	0	-100.0%	-1
KAPOLEI-KNOLLS	\$ 570,000	\$ 750,000	31.6%	\$180,000	1	1	0.0%	0
OCEAN POINTE	\$ 477,500	\$ 569,000	19.2%	\$91,500	6	5	-16.7%	-1
WESTLOCH FAIRWAY	\$ -	\$ 455,000	-	\$455,000	0	3	-	3
WESTLOCH ESTATES	\$ 550,000	\$ 471,000	-14.4%	-\$79,000	1	2	100.0%	1
Ewa Plain Region	\$ 450,000	\$ 478,000	6.2%	\$28,000	25	41	64.0%	16

Makakilo Region	2012 Median	2013 Median	+/-	+/-	2012 Sold	2013 Sold	+/-	+/-
MAKAKILO-ANUHEA	\$ 538,000	\$ 580,000	7.8%	\$42,000	1	1	0.0%	0
MAKAKILO-KAHIWELO	\$ 620,000	\$ 654,000	5.5%	\$34,000	1	1	0.0%	0
MAKAKILO-UPPER	\$ -	\$ 480,000	-	\$480,000	0	2	-	2
MAKAKILO-LOWER	\$ 503,000	\$ 572,000	13.7%	\$69,000	2	2	0.0%	0
MAKAKILO-PALEHUA HGTS	\$ -	\$ 654,150	-	\$654,150	0	2	-	2
MAKAKILO-ROYAL RIDGE	\$ 645,000	\$ -	-100.0%	-\$645,000	1	0	-100.0%	-1
MAKAKILO-STARSEDGE	\$ 695,000	\$ -	-100.0%	-\$695,000	1	0	-100.0%	-1
MAKAKILO-UPPER	\$ 472,100	\$ -	-100.0%	-\$472,100	5	0	-100.0%	-5
MAKAKILO-WAI KALOI	\$ -	\$ 644,500	-	\$644,500	0	2	-	2
MAKAKILO-WEST HILLS	\$ -	\$ 625,000	-	\$625,000	0	1	-	1
Makakilo Region	\$ 487,500	\$ 595,000	22.1%	\$107,500	11	11	0.0%	0

Single Family Solds - May 2013 vs 2012 (Based on region and neighborhood groupings as listed in MLS) - Page 3 of 4

Kailua Region	2012 Median	2013 Median	+/-	+/-	2012 Sold	2013 Sold	+/-	+/-
AIKAHI PARK	\$ 1,050,000	\$ -	-100.0%	-\$1,050,000	1	0	-100.0%	-1
BEACHSIDE	\$ 4,377,500	\$ -	-100.0%	-\$4,377,500	2	0	-100.0%	-2
CNRTY CLUB KNOLL	\$ 1,070,000	\$ 1,795,000	67.8%	\$725,000	1	1	0.0%	0
COCONUT GROVE	\$ 694,000	\$ 764,000	10.1%	\$70,000	5	4	-20.0%	-1
ENCHANTED LAKE	\$ 795,000	\$ 770,000	-3.1%	-\$25,000	7	1	-85.7%	-6
KAILUA BLUFFS	\$ 530,000	\$ 520,000	-1.9%	-\$10,000	1	1	0.0%	0
KALAMA TRACT	\$ -	\$ 1,150,000	-	\$1,150,000	0	1	-	1
KALAMA/CNUT GROV	\$ 690,000	\$ 880,000	27.5%	\$190,000	1	1	0.0%	0
KALAEHO HILLSIDE	\$ 599,999	\$ 950,000	58.3%	\$350,001	1	1	0.0%	0
KAWAILOA	\$ 999,999	\$ -	-100.0%	-\$999,999	1	0	-100.0%	-1
KAOPA	\$ 779,000	\$ 625,000	-19.8%	-\$154,000	1	1	0.0%	0
KEOLU HILLS	\$ 885,000	\$ 880,000	-0.6%	-\$5,000	1	4	300.0%	3
KOOLAUPOKU	\$ 575,000	\$ -	-100.0%	-\$575,000	1	0	-100.0%	-1
LANIKAI	\$ 1,870,000	\$ 1,250,000	-33.2%	-\$620,000	3	3	0.0%	0
MAUNAWILI	\$ -	\$ 1,095,000	-	\$1,095,000	0	3	-	3
POHAKUPU	\$ -	\$ 700,000	-	\$700,000	0	1	-	1
WAIMANALO	\$ 580,000	\$ 860,000	48.3%	\$280,000	1	3	200.0%	2
Kailua Region	\$ 794,500	\$ 870,000	9.5%	\$75,500	27	25	-7.4%	-2
Pearl City Region	2012 Median	2013 Median	+/-	+/-	2012 Sold	2013 Sold	+/-	+/-
AIEA AREA	\$ -	\$ 573,000	-	\$573,000	0	1	-	1
AIEA HEIGHTS	\$ 707,750	\$ 696,500	-1.6%	-\$11,250	4	4	0.0%	0
FOSTER VILLAGE	\$ 665,000	\$ 744,500	12.0%	\$79,500	4	2	-50.0%	-2
HALAWA	\$ -	\$ 662,500	-	\$662,500	0	2	-	2
HALAWA HEIGHTS	\$ -	\$ 880,000	-	\$880,000	0	1	-	1
MOMILANI	\$ 585,000	\$ 540,000	-7.7%	-\$45,000	1	2	100.0%	1
NEWTOWN	\$ -	\$ 970,000	-	\$970,000	0	1	-	1
PACIFIC PALISADES	\$ 533,000	\$ 465,000	-12.8%	-\$68,000	1	3	200.0%	2
PEARL CITY-UPPER	\$ 547,500	\$ 525,000	-4.1%	-\$22,500	4	5	25.0%	1
ROYAL SUMMIT	\$ 840,000	\$ -	-100.0%	-\$840,000	1	0	-100.0%	-1
WAILUNA	\$ -	\$ 575,000	-	\$575,000	0	1	-	1
WAIMALU	\$ -	\$ 390,800	-	\$390,800	0	1	-	1
Pearl City Region	\$ 630,000	\$ 618,000	-1.9%	-\$12,000	15	23	53.3%	8
Kaneohe Region	2012 Median	2013 Median	+/-	+/-	2012 Sold	2013 Sold	+/-	+/-
AHUIMANU AREA	\$ 820,000	\$ -	-100.0%	-\$820,000	1	0	-100.0%	-1
CLUB VIEW ESTATE	\$ 640,000	\$ 625,000	-2.3%	-\$15,000	1	1	0.0%	0
HAIKU KNOLLS	\$ 715,000	\$ -	-100.0%	-\$715,000	1	0	-100.0%	-1
HAIKU PLANTATION	\$ -	\$ 1,075,000	-	\$1,075,000	0	1	-	1
HAIKU VILLAGE	\$ 748,500	\$ 785,000	4.9%	\$36,500	2	1	-50.0%	-1
HALE KOU	\$ 685,000	\$ -	-100.0%	-\$685,000	1	0	-100.0%	-1
HALEKAUWILA	\$ 611,001	\$ 444,000	-27.3%	-\$167,001	1	1	0.0%	0
HALEPUU	\$ -	\$ 545,500	-	\$545,500	0	1	-	1
HAUULA	\$ 640,000	\$ 465,000	-27.3%	-\$175,000	4	1	-75.0%	-3
KAALAEA	\$ 920,000	\$ 595,000	-35.3%	-\$325,000	1	2	100.0%	1
KAABAWA	\$ 444,500	\$ 615,000	38.4%	\$170,500	2	1	-50.0%	-1
KAHANAHOU	\$ 675,000	\$ -	-100.0%	-\$675,000	1	0	-100.0%	-1
KAPUNA HALA	\$ 465,000	\$ 748,000	60.9%	\$283,000	1	1	0.0%	0
LILIPUNA	\$ 975,000	\$ -	-100.0%	-\$975,000	1	0	-100.0%	-1
LULANI OCEAN	\$ 905,000	\$ -	-100.0%	-\$905,000	1	0	-100.0%	-1
MAHINUI	\$ 727,000	\$ -	-100.0%	-\$727,000	1	0	-100.0%	-1
MOKULELE	\$ 591,000	\$ -	-100.0%	-\$591,000	1	0	-100.0%	-1
VALLEY ESTATES	\$ 430,000	\$ -	-100.0%	-\$430,000	1	0	-100.0%	-1
PUOHALA VILLAGE	\$ -	\$ 619,500	-	\$619,500	0	2	-	2
WOODRIDGE	\$ -	\$ 470,000	-	\$470,000	0	1	-	1
WAIHEE	\$ 382,000	\$ 1,136,500	197.5%	\$754,500	1	2	100.0%	1
Kaneohe Region	\$ 680,000	\$ 615,000	-9.6%	-\$65,000	22	15	-31.8%	-7

Single Family Solds - May 2013 vs 2012 (Based on region and neighborhood groupings as listed in MLS) - Page 4 of 4

North Shore Region	2012 Median	2013 Median	+/-	+/-	2012 Sold	2013 Sold	+/-	+/-
KAWAILOA	\$ 2,069,500	\$ -	-100.0%	-\$2,069,500	2	0	-100.0%	-2
LAIE	\$ 1,475,000	\$ 759,000	-48.5%	-\$716,000	1	1	0.0%	0
METCALF ACRES	\$ -	\$ 663,500	-	\$663,500	0	1	-	1
HALEIWA	\$ -	\$ 752,500	-	\$752,500	0	4	-	4
PAALAAKAI	\$ 360,000	\$ -	-100.0%	-\$360,000	1	0	-100.0%	-1
PUPUKEA	\$ 937,500	\$ -	-100.0%	-\$937,500	2	0	-100.0%	-2
SUNSET AREA	\$ -	\$ 2,562,500	-	\$2,562,500	0	2	-	2
SUNSET/VELZY	\$ 590,000	\$ -	-100.0%	-\$590,000	1	0	-100.0%	-1
WAIMEA	\$ -	\$ 900,000	-	\$900,000	0	1	-	1
WAIALUA	\$ -	\$ 540,000	-	\$540,000	0	3	-	3
North Shore Region	\$ 775,000	\$ 732,000	-5.5%	-\$43,000	7	12	71.4%	5
Waipahu Region	2012 Median	2013 Median	+/-	+/-	2012 Sold	2013 Sold	+/-	+/-
HARBOR VIEW	\$ -	\$ 487,000	-	\$487,000	0	1	-	1
RENAISSANCE	\$ 630,000	\$ -	-100.0%	-\$630,000	1	0	-100.0%	-1
ROBINSON HEIGHTS	\$ -	\$ 438,500	-	\$438,500	0	1	-	1
ROYAL KUNIA	\$ 565,000	\$ 529,000	-6.4%	-\$36,000	1	5	400.0%	4
SEAVIEW	\$ -	\$ 610,000	-	\$610,000	0	1	-	1
VILLAGE PARK	\$ 455,000	\$ 455,000	0.0%	\$0	2	2	0.0%	0
WAIKELE	\$ 670,000	\$ 627,500	-6.3%	-\$42,500	5	4	-20.0%	-1
WAIPAHU-GARDENS	\$ 430,000	\$ 466,500	8.5%	\$36,500	1	2	100.0%	1
WAIPAHU-TRIANGLE	\$ 490,000	\$ -	-100.0%	-\$490,000	2	0	-100.0%	-2
WAIPIO GENTRY	\$ -	\$ 700,000	-	\$700,000	0	1	-	1
WAIPAHU-LOWER	\$ 415,000	\$ 494,500	19.2%	\$79,500	1	2	100.0%	1
Waipahu Region	\$ 565,000	\$ 529,000	-6.4%	-\$36,000	13	19	46.2%	6
Metro Region	2012 Median	2013 Median	+/-	+/-	2012 Sold	2013 Sold	+/-	+/-
ALA MOANA	\$ -	\$ 525,000	-	\$525,000	0	1	-	1
ALEWA HEIGHTS	\$ 840,000	\$ 1,075,000	28.0%	\$235,000	2	2	0.0%	0
DOWSETT	\$ 890,000	\$ -	-100.0%	-\$890,000	2	0	-100.0%	-2
ALIAMANU	\$ 592,000	\$ 665,000	12.3%	\$73,000	1	2	100.0%	1
KALIHI-LOWER	\$ 735,000	\$ 696,000	-5.3%	-\$39,000	3	2	-33.3%	-1
KALIHI VALLEY	\$ -	\$ 552,000	-	\$552,000	0	1	-	1
KALIHI-UPPER	\$ 474,000	\$ 575,000	21.3%	\$101,000	2	1	-50.0%	-1
KALIHI UKA	\$ 385,000	\$ -	-100.0%	-\$385,000	1	0	-100.0%	-1
KAM HEIGHTS	\$ 515,000	\$ 595,000	15.5%	\$80,000	1	3	200.0%	2
KAPALAMA	\$ -	\$ 450,000	-	\$450,000		1	-	1
LILIHA	\$ 530,000	\$ 628,000	18.5%	\$98,000	1	1	0.0%	0
MAKIKI AREA	\$ 726,500	\$ -	-100.0%	-\$726,500	2	0	-100.0%	-2
MAKIKI HEIGHTS	\$ 1,307,500	\$ -	-100.0%	-\$1,307,500	2	0	-100.0%	-2
MANOA AREA	\$ 1,064,500	\$ 1,143,500	7.4%	\$79,000	6	4	-33.3%	-2
MANOA-UPPER	\$ 807,500	\$ 601,000	-25.6%	-\$206,500	2	1	-50.0%	-1
MANOA-WOODLAWN	\$ 765,000	\$ 1,150,000	50.3%	\$385,000	1	1	0.0%	0
MOANALUA GARDENS	\$ 730,000	\$ 827,000	13.3%	\$97,000	1	1	0.0%	0
MCCULLY	\$ 892,500	\$ -	-100.0%	-\$892,500	2	0	-100.0%	-2
MOANALUA VALLEY	\$ 480,000	\$ -	-100.0%	-\$480,000	1	0	-100.0%	-1
MOILIILI	\$ 677,500	\$ -	-100.0%	-\$677,500	2	0	-100.0%	-2
NUUANU AREA	\$ -	\$ 685,000	-	\$685,000	0	1	-	1
NUUANU-LOWER	\$ -	\$ 704,000	-	\$704,000	0	1	-	1
PACIFIC HEIGHTS	\$ 1,175,000	\$ 685,000	-41.7%	-\$490,000	2	1	-50.0%	-1
PAUOA VALLEY	\$ -	\$ 662,500	-	\$662,500	0	2	-	2
PUNCHBOWL AREA	\$ -	\$ 1,052,500	-	\$1,052,500	0	2	-	2
PUNCHBOWL LOWER	\$ -	\$ 572,500	-	\$572,500	0	1	-	1
PUUNUI	\$ 640,000	\$ -	-100.0%	-\$640,000	1	0	-100.0%	-1
SALT LAKE	\$ 726,500	\$ 1,055,000	45.2%	\$328,500	2	3	50.0%	1
UALAKAA	\$ 715,000	\$ 975,000	36.4%	\$260,000	1	1	0.0%	0
Metro Region	\$ 757,500	\$ 752,000	-0.7%	-\$5,500	38	33	-13.2%	-5

Condo Solds - May 2013 vs 2012 (Based on region and neighborhood groupings as listed in MLS) - Page 1 of 3

Central Region	2012 Median	2013 Median	+/-	+/-	2012 Sold	2013 Sold	+/-	+/-
LAUNANI VALLEY	\$ 249,625	\$ 371,000	48.6%	\$121,375	2	3	50.0%	1
MILILANI AREA	\$ 287,000	\$ 343,140	19.6%	\$56,140	8	6	-25.0%	-2
MILILANI MAUKA	\$ 328,000	\$ 324,500	-1.1%	-\$3,500	9	4	-55.6%	-5
WILIKINA	\$ 143,500	\$ -	-100.0%	-\$143,500	1	0	-100.0%	-1
WAIPIO ACRES/WAIKALANI WOOD	\$ 115,000	\$ 165,000	43.5%	\$50,000	6	3	-50.0%	-3
Central Region	\$ 249,500	\$ 303,000	21.4%	\$53,500	26	16	-38.5%	-10

Diamond Hd Region	2012 Median	2013 Median	+/-	+/-	2012 Sold	2013 Sold	+/-	+/-
DIAMOND HEAD	\$ 729,500	\$ 555,000	-23.9%	-\$174,500	8	9	12.5%	1
KAHALA AREA	\$ 632,500	\$ 1,460,000	130.8%	\$827,500	2	1	-50.0%	-1
KAPAHULU	\$ -	\$ 268,000	-	\$268,000	0	1	-	1
PAIKO LAGOON	\$ 475,000	\$ -	-100.0%	-\$475,000	1	0	-100.0%	-1
ST. LOUIS	\$ 454,500	\$ 495,000	8.9%	\$40,500	2	1	-50.0%	-1
WAIALAE G/C	\$ 132,500	\$ 175,000	32.1%	\$42,500	2	3	50.0%	1
WAIALAE NUI VLY	\$ 425,000	\$ 470,000	10.6%	\$45,000	2	2	0.0%	0
Diamond Hd Region	\$ 450,000	\$ 480,000	6.7%	\$30,000	17	17	0.0%	0

Ewa Plain Region	2012 Median	2013 Median	+/-	+/-	2012 Sold	2013 Sold	+/-	+/-
AG/INDL/NAVY	\$ 194,000	\$ -	-100.0%	-\$194,000	1	0	-100.0%	-1
EWA	\$ 217,500	\$ 253,250	16.4%	\$35,750	4	6	50.0%	2
EWA GEN	\$ -	\$ 269,000	-	\$269,000	0	1	-	1
EWA GEN SODA CREEK	\$ -	\$ 218,000	-	\$218,000	0	1	-	1
HOAKALEI-KA MAKANA	\$ -	\$ 431,000	-	\$431,000	0	1	-	1
KAPOLEI	\$ 342,971	\$ 315,000	-8.2%	-\$27,971	5	5	0.0%	0
KO OLINA	\$ 540,000	\$ 735,000	36.1%	\$195,000	7	7	0.0%	0
WESTLOCH FAIRWAY	\$ 205,000	\$ 359,750	75.5%	\$154,750	1	2	100.0%	1
OCEAN POINTE	\$ 335,000	\$ 355,000	6.0%	\$20,000	5	7	40.0%	2
Ewa Plain Region	\$ 342,971	\$ 354,500	3.4%	\$11,529	23	30	30.4%	7

Hawaii Kai Region	2012 Median	2013 Median	+/-	+/-	2012 Sold	2013 Sold	+/-	+/-
HAAHIONE-LOWER	\$ 480,000	\$ 425,000	-11.5%	-\$55,000	7	5	-28.6%	-2
KALAMA VALLEY	\$ -	\$ 548,000	-	\$548,000	0	1	-	1
MARINERS VALLEY	\$ -	\$ 602,000	-	\$602,000	0	17	-	17
WEST MARINA	\$ 572,500	\$ -	-100.0%	-\$572,500	8	0	-100.0%	-8
Hawaii Kai Region	\$ 550,000	\$ 580,000	5.5%	\$30,000	15	23	53.3%	8

Kailua Region	2012 Median	2013 Median	+/-	+/-	2012 Sold	2013 Sold	+/-	+/-
AIKAHI PARK	\$ 358,000	\$ -	-100.0%	-\$358,000	3	0	-100.0%	-3
BLUESTONE	\$ -	\$ 1,050,000	-	\$1,050,000	0	1	-	1
ENCHANTED LAKE	\$ -	\$ 540,000	-	\$540,000	0	1	-	1
KAILUA TOWN	\$ 401,000	\$ 427,500	6.6%	\$26,500	6	6	0.0%	0
KUKILAKILA	\$ -	\$ 572,000	-	\$572,000	0	1	-	1
Kailua Region	\$ 400,000	\$ 435,000	8.8%	\$35,000	9	9	0.0%	0

Kaneohe Region	2012 Median	2013 Median	+/-	+/-	2012 Sold	2013 Sold	+/-	+/-
ALII BLUFFS	\$ 472,500	\$ -	-100.0%	-\$472,500	1	0	-100.0%	-1
COUNTRY CLUB	\$ -	\$ 497,500	-	\$497,500	0	2	-	2
GOVERNMENT	\$ 491,000	\$ 435,000	-11.4%	-\$56,000	1	1	0.0%	0
HAIKU PLANTATION	\$ -	\$ 472,500	-	\$472,500	0	1	-	1
HALE KOU	\$ 247,000	\$ 260,000	5.3%	\$13,000	1	1	0.0%	0
KAAAWA	\$ 215,000	\$ 199,000	-7.4%	-\$16,000	1	1	0.0%	0
LILIPUNA	\$ -	\$ 447,000	-	\$447,000	0	1	-	1
MAHINUI	\$ 309,800	\$ -	-100.0%	-\$309,800	1	0	-100.0%	-1
PUUALII	\$ 300,000	\$ 327,500	9.2%	\$27,500	1	1	0.0%	0
PUNALUU	\$ 200,000	\$ 195,000	-2.5%	-\$5,000	1	1	0.0%	0
TEMPLE VALLEY	\$ 432,500	\$ 549,000	26.9%	\$116,500	2	1	-50.0%	-1
WINDWARD ESTATES	\$ 279,000	\$ 325,500	16.7%	\$46,500	1	4	300.0%	3
Kaneohe Region	\$ 304,900	\$ 390,000	27.9%	\$85,100	10	14	40.0%	4

Condo Solds - May 2013 vs 2012 (Based on region and neighborhood groupings as listed in MLS) - Page 2 of 3

Leeward Region	2012 Median	2013 Median	+/-	+/-	2012 Sold	2013 Sold	+/-	+/-
MAILI	\$ 98,000	\$ 280,700	186.4%	\$182,700	1	8	700.0%	7
WAIANAE	\$ -	\$ 71,000	-	\$71,000	0	6	-	6
MAKAHA	\$ 123,500	\$ 137,500	11.3%	\$14,000	6	6	0.0%	0
Leeward Region	\$ 115,000	\$ 130,500	13.5%	\$15,500	7	20	185.7%	13

Makakilo Region	2012 Median	2013 Median	+/-	+/-	2012 Sold	2013 Sold	+/-	+/-
MAKAKILO-UPPER	\$ 250,000	\$ 225,000	-10.0%	-\$25,000	13	7	-46.2%	-6
Makakilo Region	\$ 250,000	\$ 225,000	-10.0%	-\$25,000	13	7	-46.2%	-6

Metro Region	2012 Median	2013 Median	+/-	+/-	2012 Sold	2013 Sold	+/-	+/-
ALA MOANA	\$ 220,000	\$ 230,000	4.5%	\$10,000	9	20	122.2%	11
CHINATOWN	\$ 388,650	\$ 588,000	51.3%	\$199,350	6	1	-83.3%	-5
DILLINGHAM	\$ 317,500	\$ -	-100.0%	-\$317,500	2	0	-100.0%	-2
DOWNTOWN	\$ 312,500	\$ 307,500	-1.6%	-\$5,000	8	16	100.0%	8
HOLIDAY MART	\$ 185,000	\$ 272,500	47.3%	\$87,500	1	6	500.0%	5
KAKAAKO	\$ 590,000	\$ 705,000	19.5%	\$115,000	21	17	-19.0%	-4
KALIHI AREA	\$ 235,000	\$ -	-100.0%	-\$235,000	1	0	-100.0%	-1
KALIHI LOWER	\$ 180,000	\$ -	-100.0%	-\$180,000	2	0	-100.0%	-2
KAPAHULU	\$ 368,000	\$ 300,000	-18.5%	-\$68,000	3	1	-66.7%	-2
KAPALAMA	\$ 185,000	\$ -	-100.0%	-\$185,000	3	0	-100.0%	-3
KAPIO/KINAU/WARD	\$ 452,500	\$ 259,550	-42.6%	-\$192,950	4	2	-50.0%	-2
KAPIOLANI	\$ 440,000	\$ 352,500	-19.9%	-\$87,500	7	12	71.4%	5
LILIHA	\$ 295,000	\$ 311,500	5.6%	\$16,500	1	2	100.0%	1
MAKIKI	\$ 275,000	\$ 275,000	0.0%	\$0	11	4	-63.6%	-7
MAKIKI AREA	\$ -	\$ 310,000	-	\$310,000	0	22	-	22
MANOA AREA	\$ 610,000	\$ -	-100.0%	-\$610,000	1	0	-100.0%	-1
MANOA-LOWER	\$ -	\$ 277,500	-	\$277,500	0	2	-	2
MCCULLY	\$ 115,000	\$ 108,000	-6.1%	-\$7,000	2	5	150.0%	3
MOIILILI	\$ 245,000	\$ 261,500	6.7%	\$16,500	9	10	11.1%	1
NUUANU-LOWER	\$ 348,250	\$ 283,500	-18.6%	-\$64,750	4	2	-50.0%	-2
PALAMA	\$ -	\$ 219,000	-	\$219,000	0	1	-	1
PAWAA	\$ 275,000	\$ 195,830	-28.8%	-\$79,170	2	4	100.0%	2
PUNAHOU	\$ 470,000	\$ 358,000	-23.8%	-\$112,000	1	3	200.0%	2
PUNCHBOWL AREA	\$ 324,400	\$ 310,000	-4.4%	-\$14,400	4	7	75.0%	3
PUNCHBOWL-LOWER	\$ 272,000	\$ 280,000	2.9%	\$8,000	2	1	-50.0%	-1
SALT LAKE	\$ 277,000	\$ 360,000	30.0%	\$83,000	17	20	17.6%	3
WAIKIKI	\$ 268,000	\$ 327,000	22.0%	\$59,000	91	94	3.3%	3
Metro Region	\$ 296,500	\$ 315,000	6.2%	\$18,500	212	252	18.9%	40

North Shore Region	2012 Median	2013 Median	+/-	+/-	2012 Sold	2013 Sold	+/-	+/-
WAIALUA	\$ 192,950	\$ 135,000	-30.0%	-\$57,950	2	1	-50.0%	-1
KUILIMA	\$ -	\$ 330,750	-	\$330,750	0	4	-	4
North Shore Region	\$ 192,950	\$ 249,000	29.0%	\$56,050	2	5	150.0%	3

Pearl City Region	2012 Median	2013 Median	+/-	+/-	2012 Sold	2013 Sold	+/-	+/-
PEARLCITY	\$ -	\$ 200,000	-	\$200,000	0	1	-	1
HALAWA	\$ 364,000	\$ 370,000	1.6%	\$6,000	5	5	0.0%	0
MANANA	\$ 225,600	\$ 220,000	-2.5%	-\$5,600	2	3	50.0%	1
PEARL CITY LOWER	\$ 212,550	\$ -	-100.0%	-\$212,550	2	0	-100.0%	-2
NEWTOWN	\$ 335,000	\$ 438,000	30.7%	\$103,000	1	1	0.0%	0
PEARLRIDGE	\$ 280,000	\$ 271,000	-3.2%	-\$9,000	18	14	-22.2%	-4
WAIU	\$ 260,000	\$ 262,000	0.8%	\$2,000	7	4	-42.9%	-3
WAIMALU	\$ -	\$ 205,000	-	\$205,000	0	2	-	2
WAILUNA	\$ -	\$ 424,500	-	\$424,500	0	2	-	2
Pearl City Region	\$ 275,000	\$ 277,500	0.9%	\$2,500	35	32	-8.6%	-3

Condo Solds - May 2013 vs 2012 (Based on region and neighborhood groupings as listed in MLS) - Page 3 of 3

Waipahu Region	2012 Median	2013 Median	+/-	+/-	2012 Sold	2013 Sold	+/-	+/-
ROYAL KUNIA	\$ 250,000	\$ -	-100.0%	-\$250,000	1	0	-100.0%	-1
WAIKELE	\$ 305,000	\$ 315,000	3.3%	\$10,000	9	11	22.2%	2
WAIPAHU-LOWER	\$ 138,000	\$ 153,500	11.2%	\$15,500	1	5	400.0%	4
WAIPIO GENTRY	\$ 235,000	\$ 262,500	11.7%	\$27,500	7	11	57.1%	4
Waipahu Region	\$ 253,000	\$ 285,000	12.6%	\$32,000	18	27	50.0%	9