

Local Market Update

Single Family Homes

August 2013



August 2013		New Listings			Closed Sales			Median Sales Price			Percent of Original Price Received			Days on Market Until Sale			Inventory of Homes for Sale		
		Aug-13	Aug-12	Change	Aug-13	Aug-12	Change	Aug-13	Aug-12	Change	Aug-13	Aug-12	Change	Aug-13	Aug-12	Change	Aug-13	Aug-12	Change
Aina Haina - Kuliouou	1-3-6 to 1-3-8	8	13	-38%	3	5	-40%	\$800,000	\$1,285,000	-38%	101.9%	98.9%	3%	8	25	-68%	27	41	-34%
Ala Moana - Kakaako	1-2-3	1	0	-	0	0	-	\$0	\$0	-	0.0%	0.0%	-	0	0	-	3	2	50%
Downtown - Nuuanu	1-1-8 to 1-2-2	13	16	-19%	9	7	29%	\$930,000	\$750,000	24%	100.5%	93.9%	7%	23	9	156%	33	44	-25%
Ewa Plain	1-9-1	71	50	42%	67	58	16%	\$539,000	\$450,000	20%	99.8%	96.8%	3%	16	22	-27%	164	139	18%
Hawaii Kai	1-3-9	25	17	47%	22	16	38%	\$1,137,500	\$1,032,000	10%	95.2%	98.5%	-3%	25	29	-14%	71	80	-11%
Kailua - Waimanalo	1-4-1 to Selected 1-4-4	37	26	42%	29	29	0%	\$890,000	\$775,000	15%	99.4%	97.5%	2%	10	23	-57%	97	111	-13%
Kalihi - Palama	1-1-2 to 1-1-7	13	11	18%	15	5	200%	\$625,000	\$568,000	10%	91.2%	98.8%	-8%	9	16	-44%	59	29	103%
Kaneohe	Selected 1-4-4 to 1-4-7	21	34	-38%	29	20	45%	\$685,000	\$655,250	5%	97.9%	98.9%	-1%	26	19	37%	86	84	2%
Kapahulu - Diamond Head	1-3-1 to 1-3-4	27	31	-13%	22	22	0%	\$891,250	\$839,000	6%	101.0%	95.2%	6%	10	31	-68%	63	90	-30%
Makaha - Nanakuli	1-8-1 to 1-8-9	38	30	27%	14	12	17%	\$280,000	\$297,500	-6%	92.7%	99.5%	-7%	59	37	59%	123	115	7%
Makakilo	1-9-2 to 1-9-3	19	14	36%	20	12	67%	\$590,000	\$572,000	3%	99.3%	99.7%	0%	23	50	-54%	58	50	16%
Makiki - Moiliili	1-2-4 to 1-2-9 (except 1-2-6)	11	11	0%	13	7	86%	\$1,045,000	\$961,000	9%	110.1%	101.3%	9%	31	39	-21%	43	41	5%
Mililani	Selected 1-9-4 to 1-9-5	23	24	-4%	27	17	59%	\$630,000	\$535,000	18%	99.2%	97.3%	2%	31	19	63%	59	58	2%
Moanalua - Salt Lake	1-1-1	9	3	200%	6	5	20%	\$788,500	\$756,000	4%	102.0%	102.9%	-1%	12	9	33%	15	15	0%
North Shore	1-5-6 to 1-6-9	13	11	18%	14	8	75%	\$745,000	\$827,500	-10%	95.2%	99.2%	-4%	70	33	112%	61	63	-3%
Pearl City - Aiea	1-9-6 to 1-9-9	19	26	-27%	26	14	86%	\$649,500	\$555,000	17%	100.0%	95.0%	5%	16	48	-67%	57	65	-12%
Wahiawa	1-7-1 to 1-7-7	12	8	50%	6	9	-33%	\$467,500	\$407,000	15%	101.6%	93.6%	9%	12	6	100%	33	31	6%
Waialae - Kahala	1-3-5	14	13	8%	15	17	-12%	\$1,420,000	\$1,679,470	-15%	101.5%	94.5%	7%	10	27	-63%	52	58	-10%
Waikiki	1-2-6	0	0	-	1	0	-	\$131,000	\$0	-	87.9%	0.0%	-	42	0	-	2	0	-
Waipahu	1-9-4	17	23	-26%	26	23	13%	\$545,000	\$520,000	5%	97.0%	100.0%	-3%	21	22	-5%	77	67	15%
Windward Coast	1-4-8 to 1-5-5	13	3	333%	2	7	-71%	\$573,500	\$530,000	8%	98.0%	88.5%	11%	102	22	364%	42	47	-11%

Year to Date		New Listings			Closed Sales			Median Sales Price			Percent of Original Price Received			Days on Market Until Sale		
		Aug-13	Aug-12	Change	Aug-13	Aug-12	Change	Aug-13	Aug-12	Change	Aug-13	Aug-12	Change	Aug-13	Aug-12	Change
Aina Haina - Kuliouou	1-3-6 to 1-3-8	75	85	-12%	55	44	25%	\$950,000	\$889,058	7%	100.0%	94.8%	5%	13	16	-19%
Ala Moana - Kakaako	1-2-3	8	7	14%	2	7	-71%	\$607,500	\$799,900	-24%	99.7%	94.2%	6%	55	52	6%
Downtown - Nuuanu	1-1-8 to 1-2-2	82	85	-4%	62	48	29%	\$760,150	\$750,000	1%	95.1%	94.1%	1%	31	34	-9%
Ewa Plain	1-9-1	532	409	30%	385	315	22%	\$515,000	\$459,000	12%	99.0%	97.9%	1%	17	26	-35%
Hawaii Kai	1-3-9	177	171	4%	122	126	-3%	\$987,000	\$880,000	12%	99.5%	94.4%	5%	22	31	-29%
Kailua - Waimanalo	1-4-1 to Selected 1-4-4	276	229	21%	211	194	9%	\$875,000	\$782,500	12%	97.8%	95.4%	3%	15	33	-55%
Kalihi - Palama	1-1-2 to 1-1-7	115	89	29%	60	63	-5%	\$550,000	\$560,000	-2%	95.7%	93.6%	2%	25	24	4%
Kaneohe	Selected 1-4-4 to 1-4-7	189	177	7%	139	109	28%	\$690,000	\$670,000	3%	98.6%	97.8%	1%	25	29	-14%
Kapahulu - Diamond Head	1-3-1 to 1-3-4	177	191	-7%	134	165	-19%	\$826,956	\$778,000	6%	101.2%	94.3%	7%	14	30	-53%
Makaha - Nanakuli	1-8-1 to 1-8-9	238	217	10%	114	130	-12%	\$328,000	\$311,250	5%	94.0%	93.8%	0%	42	31	35%
Makakilo	1-9-2 to 1-9-3	139	102	36%	101	73	38%	\$565,000	\$565,000	0%	100.0%	97.6%	2%	20	54	-63%
Makiki - Moiliili	1-2-4 to 1-2-9 (except 1-2-6)	90	90	0%	68	72	-6%	\$970,000	\$910,500	7%	100.8%	94.8%	6%	31	21	48%
Mililani	Selected 1-9-4 to 1-9-5	196	180	9%	162	156	4%	\$622,500	\$598,500	4%	100.0%	98.5%	2%	16	28	-43%
Moanalua - Salt Lake	1-1-1	57	36	58%	41	32	28%	\$760,000	\$700,000	9%	101.5%	98.2%	3%	29	21	38%
North Shore	1-5-6 to 1-6-9	117	86	36%	65	56	16%	\$663,500	\$694,000	-4%	94.9%	94.4%	1%	37	57	-35%
Pearl City - Aiea	1-9-6 to 1-9-9	193	160	21%	157	115	37%	\$597,500	\$576,000	4%	96.4%	95.2%	1%	23	29	-21%
Wahiawa	1-7-1 to 1-7-7	74	60	23%	49	38	29%	\$415,000	\$390,000	6%	92.2%	97.9%	-6%	11	25	-56%
Waialae - Kahala	1-3-5	96	82	17%	68	69	-1%	\$1,565,000	\$1,382,000	13%	102.6%	92.3%	11%	24	46	-48%
Waikiki	1-2-6	2	1	100%	1	1	0%	\$131,000	\$835,000	-84%	87.9%	92.9%	-5%	42	42	0%
Waipahu	1-9-4	171	144	19%	134	114	18%	\$530,000	\$485,000	9%	98.3%	95.1%	3%	21	31	-32%
Windward Coast	1-4-8 to 1-5-5	67	67	0%	27	29	-7%	\$584,000	\$460,000	27%	86.5%	98.9%	-13%	49	30	63%

SOURCE: Honolulu Board of REALTORS®, compiled from MLS data.

Local Market Update

Condos August 2013



August 2013		New Listings			Closed Sales			Median Sales Price			Percent of Original Price Received			Days on Market Until Sale			Inventory of Homes for Sale		
		Aug-13	Aug-12	Change	Aug-13	Aug-12	Change	Aug-13	Aug-12	Change	Aug-13	Aug-12	Change	Aug-13	Aug-12	Change	Aug-13	Aug-12	Change
Aina Haina - Kuliouou	1-3-6 to 1-3-8	0	1	-	2	0	-	\$605,000	\$0	-	100.0%	0.0%	-	40	0	-	2	1	100%
Ala Moana - Kakaako	1-2-3	64	52	23%	47	33	42%	\$456,500	\$285,000	60%	101.4%	95.3%	6%	27	36	-25%	173	150	15%
Downtown - Nuuanu	1-1-8 to 1-2-2	39	41	-5%	36	34	6%	\$450,750	\$405,000	11%	96.1%	97.9%	-2%	18	36	-50%	138	133	4%
Ewa Plain	1-9-1	56	30	87%	42	27	56%	\$315,000	\$293,000	8%	99.2%	110.6%	-10%	12	12	0%	112	78	44%
Hawaii Kai	1-3-9	24	22	9%	24	15	60%	\$589,500	\$550,000	7%	99.2%	98.6%	1%	18	31	-42%	60	57	5%
Kailua - Waimanalo	1-4-1 to Selected 1-4-4	11	8	38%	20	17	18%	\$527,500	\$391,000	35%	101.1%	99.0%	2%	11	21	-48%	39	36	8%
Kalihi - Palama	1-1-2 to 1-1-7	12	5	140%	10	10	0%	\$362,500	\$389,000	-7%	100.3%	98.5%	2%	9	80	-89%	36	37	-3%
Kaneohe	Selected 1-4-4 to 1-4-7	20	21	-5%	21	27	-22%	\$375,000	\$419,000	-11%	90.9%	100.0%	-9%	11	13	-15%	53	58	-9%
Kapahulu - Diamond Head	1-3-1 to 1-3-4	11	17	-35%	9	6	50%	\$548,000	\$514,500	7%	100.0%	85.5%	17%	48	34	41%	47	63	-25%
Makaha - Nanakuli	1-8-1 to 1-8-9	14	17	-18%	12	3	300%	\$107,500	\$85,000	26%	96.9%	94.4%	3%	33	52	-37%	64	65	-2%
Makakilo	1-9-2 to 1-9-3	10	11	-9%	8	6	33%	\$287,000	\$263,500	9%	99.3%	101.4%	-2%	31	39	-21%	21	20	5%
Makiki - Moiliili	1-2-4 to 1-2-9 (except 1-2-6)	90	62	45%	56	44	27%	\$322,500	\$305,000	6%	99.2%	94.7%	5%	17	40	-58%	185	196	-6%
Mililani	Selected 1-9-4 to 1-9-5	36	27	33%	26	36	-28%	\$247,500	\$307,500	-20%	96.1%	97.8%	-2%	17	20	-15%	46	82	-44%
Moanalua - Salt Lake	1-1-1	23	26	-12%	17	22	-23%	\$275,000	\$262,000	5%	98.6%	97.9%	1%	20	17	18%	58	63	-8%
North Shore	1-5-6 to 1-6-9	9	6	50%	6	6	0%	\$415,000	\$360,000	15%	99.4%	91.4%	9%	32	120	-73%	18	32	-44%
Pearl City - Aiea	1-9-6 to 1-9-9	50	24	108%	23	27	-15%	\$345,000	\$274,000	26%	98.9%	96.1%	3%	10	24	-58%	84	85	-1%
Wahiawa	1-7-1 to 1-7-7	2	1	100%	1	3	-67%	\$161,000	\$96,000	68%	95.8%	83.5%	15%	15	60	-75%	6	15	-60%
Waialae - Kahala	1-3-5	6	5	20%	3	1	200%	\$459,000	\$115,000	299%	100.0%	76.7%	30%	40	92	-57%	15	15	0%
Waikiki	1-2-6	127	126	1%	79	77	3%	\$380,000	\$325,000	17%	98.7%	95.6%	3%	39	30	30%	448	518	-14%
Waipahu	1-9-4	25	14	79%	17	13	31%	\$263,000	\$315,000	-17%	103.1%	100.0%	3%	8	14	-43%	46	63	-27%
Windward Coast	1-4-8 to 1-5-5	2	0	-	1	2	-50%	\$140,000	\$145,000	-3%	92.9%	98.3%	-5%	146	32	356%	11	11	0%

Year to Date		New Listings			Closed Sales			Median Sales Price			Percent of Original Price Received			Days on Market Until Sale		
		Aug-13	Aug-12	Change	Aug-13	Aug-12	Change	Aug-13	Aug-12	Change	Aug-13	Aug-12	Change	Aug-13	Aug-12	Change
Aina Haina - Kuliouou	1-3-6 to 1-3-8	4	4	0%	4	2	100%	\$640,000	\$492,500	30%	98.8%	96.6%	2%	25	35	-29%
Ala Moana - Kakaako	1-2-3	412	310	33%	286	262	9%	\$387,000	\$351,550	10%	101.2%	97.7%	4%	30	42	-29%
Downtown - Nuuanu	1-1-8 to 1-2-2	339	258	31%	244	198	23%	\$447,000	\$372,500	20%	95.3%	96.1%	-1%	31	40	-23%
Ewa Plain	1-9-1	295	208	42%	225	185	22%	\$330,000	\$315,000	5%	97.6%	98.4%	-1%	15	25	-40%
Hawaii Kai	1-3-9	177	142	25%	141	115	23%	\$567,000	\$523,000	8%	100.4%	96.0%	5%	14	41	-66%
Kailua - Waimanalo	1-4-1 to Selected 1-4-4	87	81	7%	63	79	-20%	\$438,000	\$407,000	8%	101.9%	98.8%	3%	9	25	-64%
Kalihi - Palama	1-1-2 to 1-1-7	94	87	8%	64	66	-3%	\$367,500	\$316,000	16%	100.0%	93.4%	7%	18	36	-50%
Kaneohe	Selected 1-4-4 to 1-4-7	150	119	26%	125	90	39%	\$422,000	\$409,500	3%	99.5%	99.3%	0%	14	29	-52%
Kapahulu - Diamond Head	1-3-1 to 1-3-4	94	91	3%	79	56	41%	\$514,000	\$470,000	9%	97.9%	96.5%	1%	28	38	-26%
Makaha - Nanakuli	1-8-1 to 1-8-9	142	99	43%	84	48	75%	\$101,250	\$90,000	13%	89.6%	91.4%	-2%	33	53	-38%
Makakilo	1-9-2 to 1-9-3	74	69	7%	62	57	9%	\$259,000	\$250,000	4%	96.1%	96.5%	0%	16	22	-27%
Makiki - Moiliili	1-2-4 to 1-2-9 (except 1-2-6)	536	451	19%	372	332	12%	\$320,000	\$302,000	6%	98.5%	95.0%	4%	20	31	-35%
Mililani	Selected 1-9-4 to 1-9-5	215	241	-11%	174	186	-6%	\$298,250	\$286,000	4%	99.5%	97.8%	2%	16	26	-38%
Moanalua - Salt Lake	1-1-1	161	164	-2%	117	126	-7%	\$295,000	\$273,500	8%	98.7%	95.8%	3%	17	21	-19%
North Shore	1-5-6 to 1-6-9	42	38	11%	30	23	30%	\$382,500	\$295,000	30%	98.8%	92.5%	7%	53	91	-42%
Pearl City - Aiea	1-9-6 to 1-9-9	274	219	25%	193	185	4%	\$285,000	\$270,000	6%	100.0%	95.1%	5%	15	40	-63%
Wahiawa	1-7-1 to 1-7-7	9	15	-40%	9	8	13%	\$145,000	\$112,500	29%	93.5%	91.9%	2%	40	70	-43%
Waialae - Kahala	1-3-5	39	40	-3%	31	27	15%	\$438,000	\$410,850	7%	95.8%	95.5%	0%	40	33	21%
Waikiki	1-2-6	1040	857	21%	747	597	25%	\$329,000	\$355,000	-7%	95.4%	97.9%	-3%	32	40	-20%
Waipahu	1-9-4	187	146	28%	147	88	67%	\$270,000	\$255,500	6%	101.9%	92.9%	10%	12	29	-59%
Windward Coast	1-4-8 to 1-5-5	23	16	44%	12	9	33%	\$192,500	\$185,000	4%	95.3%	100.0%	-5%	51	56	-9%

SOURCE: Honolulu Board of REALTORS®, compiled from MLS data.

Local Market Update

August 2013

Aina Haina - Kuliouou

(1-3-6 to 1-3-8)

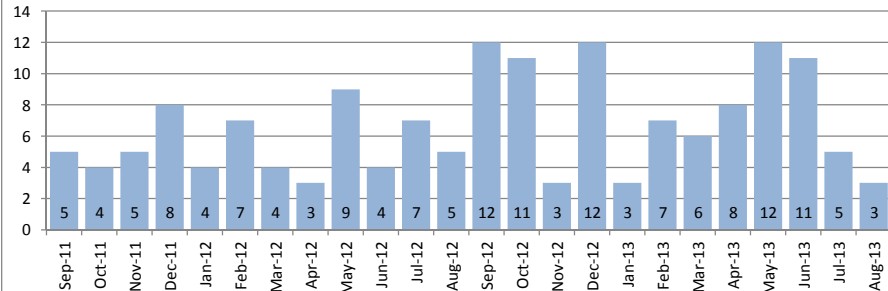


August 2013

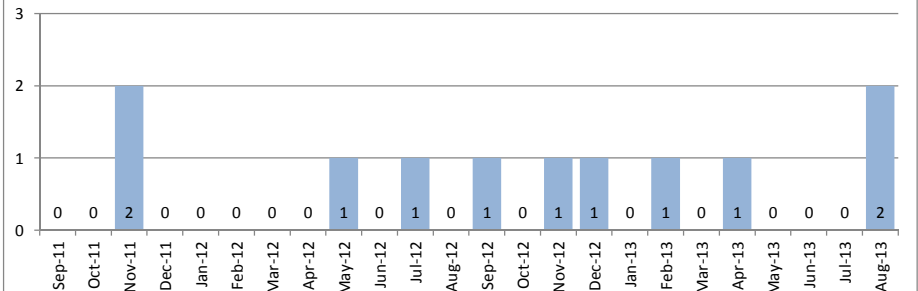
Single Family Homes	August			Year to Date		
	2013	2012	Change	2013	2012	Change
New Listings	8	13	-38%	75	85	-12%
Closed Sales	3	5	-40%	55	44	25%
Median Sales Price	\$800,000	\$1,285,000	-38%	\$950,000	\$889,058	7%
Percent of Original List Price Received	101.9%	98.9%	3%	100.0%	94.8%	5%
Median Days on Market Until Sale	8	25	-68%	13	16	-19%
Inventory of Homes for Sale	27	41	-34%	--	--	--

Condos	August			Year to Date		
	2013	2012	Change	2013	2012	Change
New Listings	0	1	--	4	4	0%
Closed Sales	2	0	--	4	2	100%
Median Sales Price	\$605,000	\$0	--	\$640,000	\$492,500	30%
Percent of Original List Price Received	100.0%	0.0%	--	98.8%	96.6%	2%
Median Days on Market Until Sale	40	0	--	25	35	-29%
Inventory of Homes for Sale	2	1	--	--	--	--

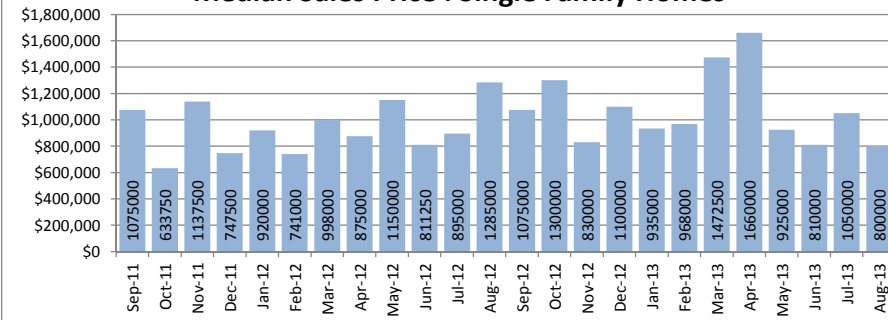
Closed Sales : Single Family Homes



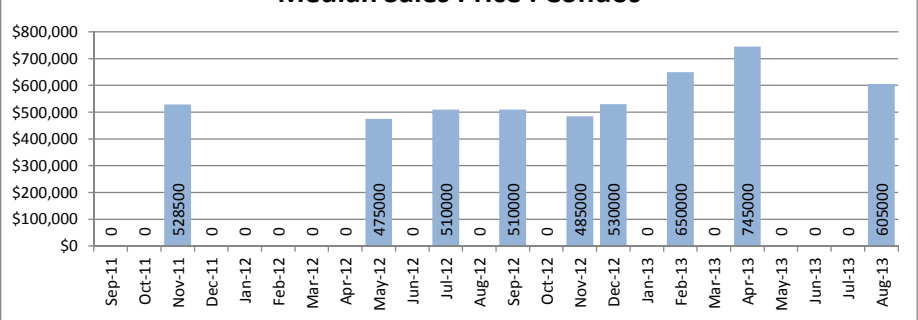
Closed Sales : Condos



Median Sales Price : Single Family Homes



Median Sales Price : Condos



SOURCE: Honolulu Board of REALTORS®, compiled from MLS data.

Local Market Update

August 2013

Ala Moana - Kakaako

(1-2-3)

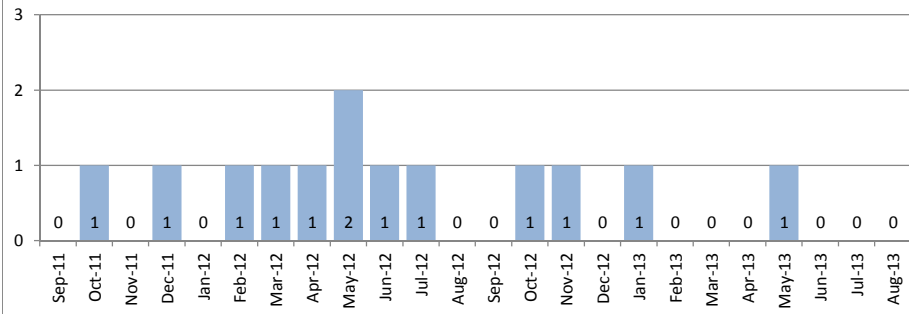


August 2013

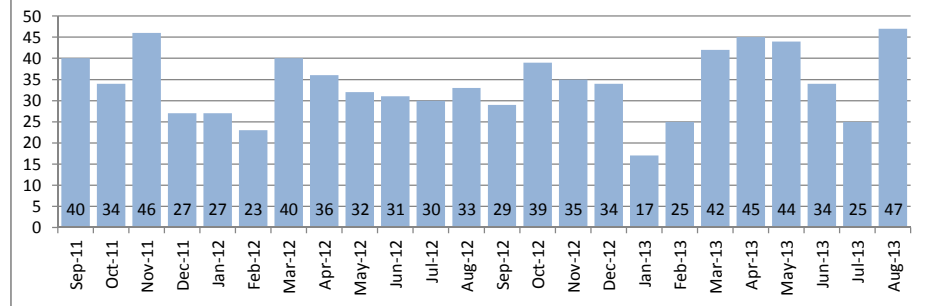
Single Family Homes	August			Year to Date		
	2013	2012	Change	2013	2012	Change
New Listings	1	0	-	8	7	14%
Closed Sales	0	0	-	2	7	-71%
Median Sales Price	\$0	\$0	-	\$607,500	\$799,900	-24%
Percent of Original List Price Received	0.0%	0.0%	-	99.7%	94.2%	6%
Median Days on Market Until Sale	0	0	-	55	52	6%
Inventory of Homes for Sale	3	2	50%	--	--	--

Condos	August			Year to Date		
	2013	2012	Change	2013	2012	Change
New Listings	64	52	23%	412	310	33%
Closed Sales	47	33	42%	286	262	9%
Median Sales Price	\$456,500	\$285,000	60%	\$387,000	\$351,550	10%
Percent of Original List Price Received	101.4%	95.3%	6%	101.2%	97.7%	4%
Median Days on Market Until Sale	27	36	-25%	30	42	-29%
Inventory of Homes for Sale	173	150	15%	--	--	--

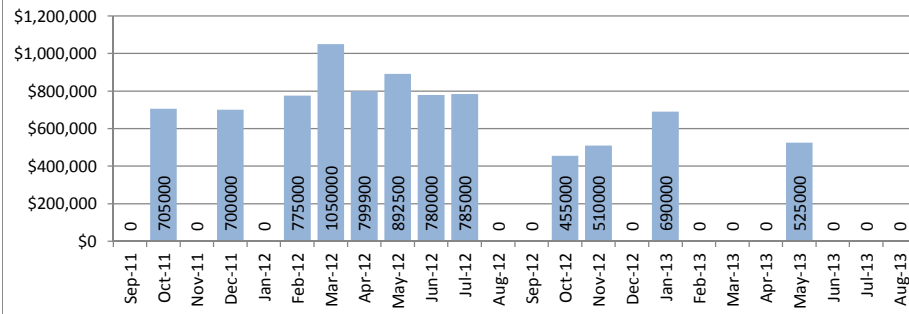
Closed Sales : Single Family Homes



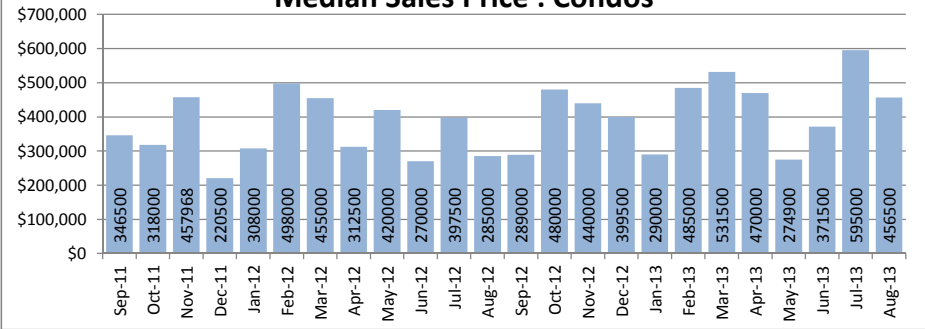
Closed Sales : Condos



Median Sales Price : Single Family Homes



Median Sales Price : Condos



SOURCE: Honolulu Board of REALTORS®, compiled from MLS data.

Local Market Update

August 2013

Downtown - Nuuanu

1-1-8 to 1-2-2

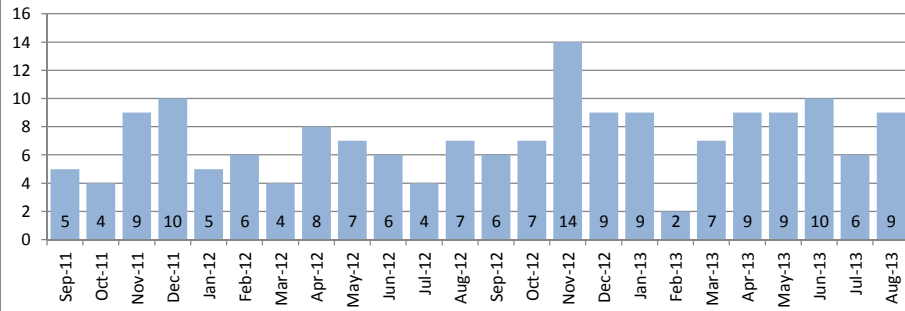


August 2013

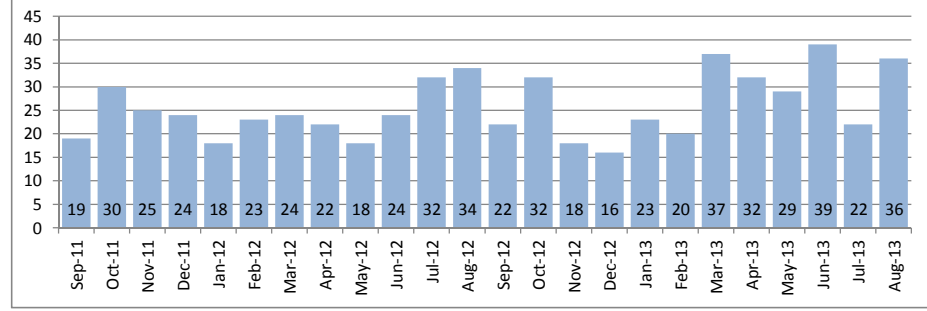
Single Family Homes	August			Year to Date		
	2013	2012	Change	2013	2012	Change
New Listings	13	16	-19%	82	85	-4%
Closed Sales	9	7	29%	62	48	29%
Median Sales Price	\$930,000	\$750,000	24%	\$760,150	\$750,000	1%
Percent of Original List Price Received	100.5%	93.9%	7%	95.1%	94.1%	1%
Median Days on Market Until Sale	23	9	156%	31	34	-9%
Inventory of Homes for Sale	33	44	-25%	--	--	--

Condos	August			Year to Date		
	2013	2012	Change	2013	2012	Change
New Listings	39	41	-5%	339	258	31%
Closed Sales	36	34	6%	244	198	23%
Median Sales Price	\$450,750	\$405,000	11%	\$447,000	\$372,500	20%
Percent of Original List Price Received	96.1%	97.9%	-2%	95.3%	96.1%	-1%
Median Days on Market Until Sale	18	36	-50%	31	40	-23%
Inventory of Homes for Sale	138	133	4%	--	--	--

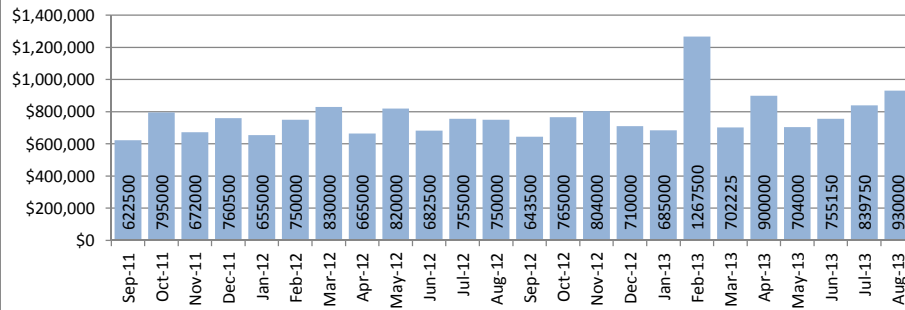
Closed Sales : Single Family Homes



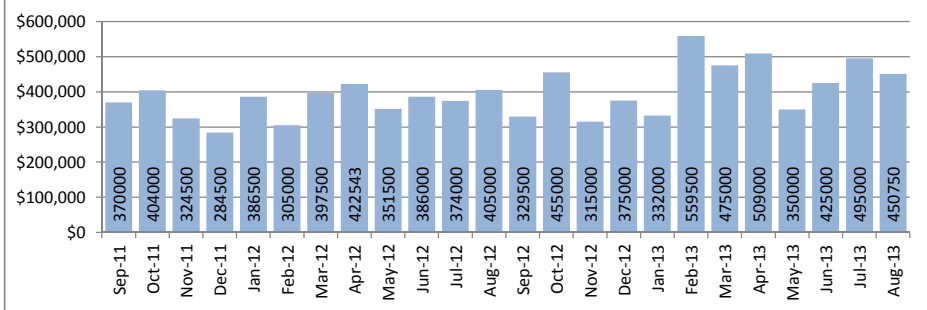
Closed Sales : Condos



Median Sales Price : Single Family Homes



Median Sales Price : Condos



SOURCE: Honolulu Board of REALTORS® , compiled from MLS data.

Local Market Update

August 2013



Ewa Plain

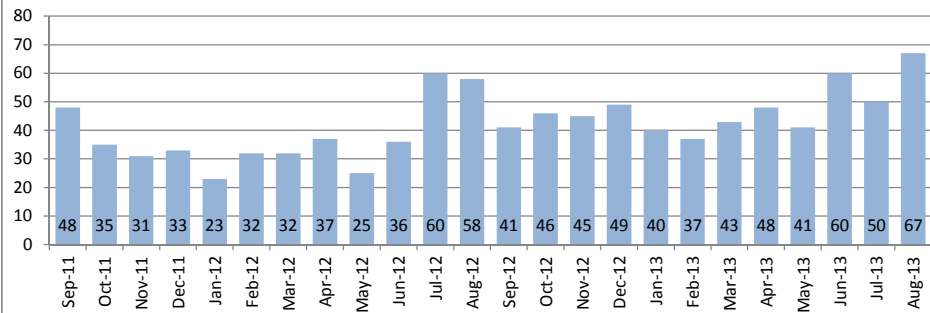
1-9-1

August 2013

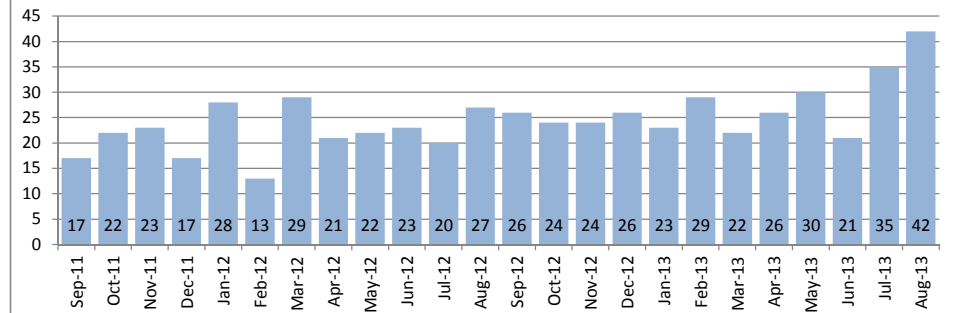
Single Family Homes	August			Year to Date		
	2013	2012	Change	2013	2012	Change
New Listings	71	50	42%	532	409	30%
Closed Sales	67	58	16%	385	315	22%
Median Sales Price	\$539,000	\$450,000	20%	\$515,000	\$459,000	12%
Percent of Original List Price Received	99.8%	96.8%	3%	99.0%	97.9%	1%
Median Days on Market Until Sale	16	22	-27%	17	26	-35%
Inventory of Homes for Sale	164	139	18%	--	--	--

Condos	August			Year to Date		
	2013	2012	Change	2013	2012	Change
New Listings	56	30	87%	295	208	42%
Closed Sales	42	27	56%	225	185	22%
Median Sales Price	\$315,000	\$293,000	8%	\$330,000	\$315,000	5%
Percent of Original List Price Received	99.2%	110.6%	-10%	97.6%	98.4%	-1%
Median Days on Market Until Sale	12	12	0%	15	25	-40%
Inventory of Homes for Sale	112	78	44%	--	--	--

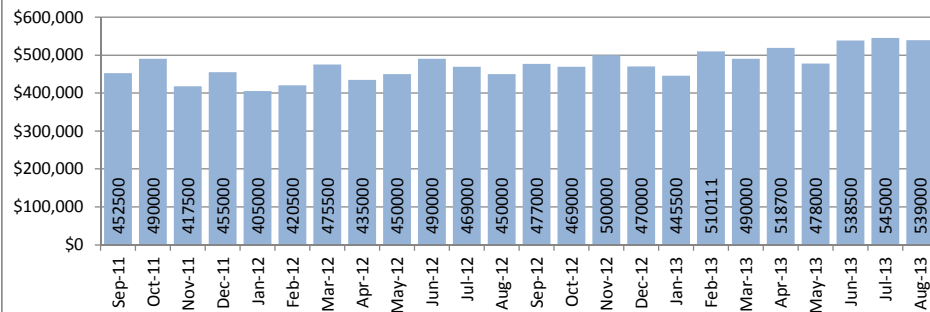
Closed Sales : Single Family Homes



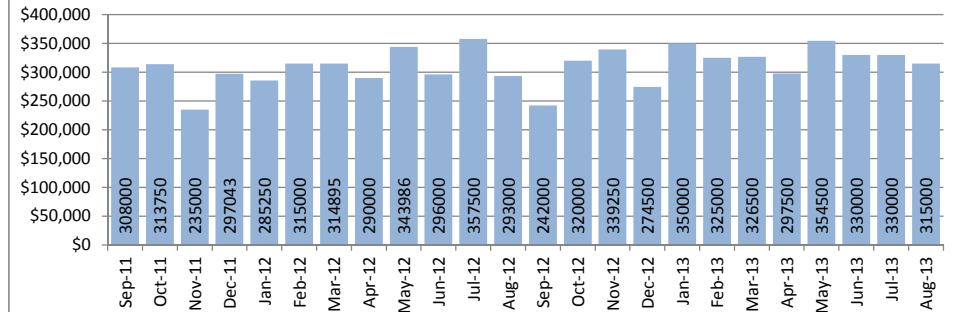
Closed Sales : Condos



Median Sales Price : Single Family Homes



Median Sales Price : Condos



SOURCE: Honolulu Board of REALTORS®, compiled from MLS data.

Local Market Update

August 2013

Hawaii Kai

1-3-9

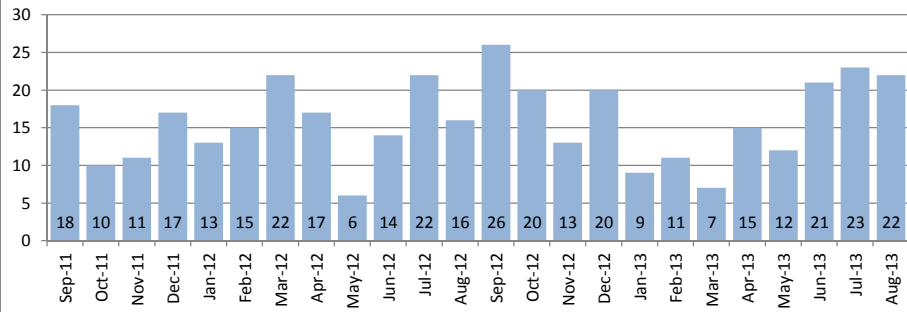


August 2013

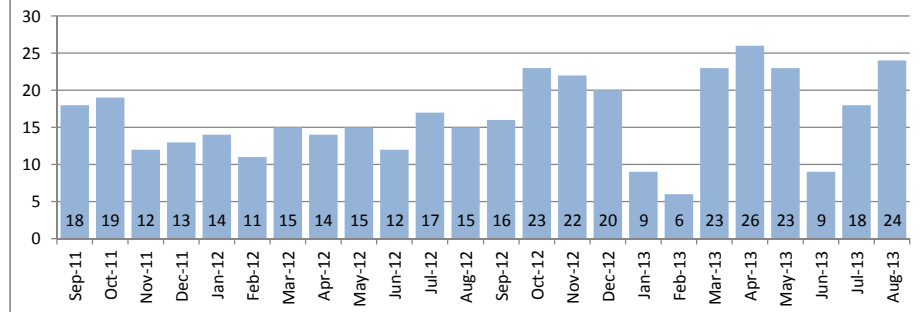
Single Family Homes	August			Year to Date		
	2013	2012	Change	2013	2012	Change
New Listings	25	17	47%	177	171	4%
Closed Sales	22	16	38%	122	126	-3%
Median Sales Price	\$1,137,500	\$1,032,000	10%	\$987,000	\$880,000	12%
Percent of Original List Price Received	95.2%	98.5%	-3%	99.5%	94.4%	5%
Median Days on Market Until Sale	25	29	-14%	22	31	-29%
Inventory of Homes for Sale	71	80	-11%	--	--	--

Condos	August			Year to Date		
	2013	2012	Change	2013	2012	Change
New Listings	24	22	9%	177	142	25%
Closed Sales	24	15	60%	141	115	23%
Median Sales Price	\$589,500	\$550,000	7%	\$567,000	\$523,000	8%
Percent of Original List Price Received	99.2%	98.6%	1%	100.4%	96.0%	5%
Median Days on Market Until Sale	18	31	-42%	14	41	-66%
Inventory of Homes for Sale	60	57	5%	--	--	--

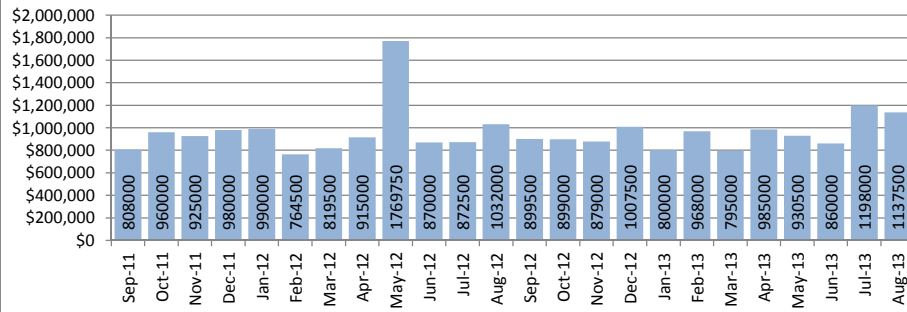
Closed Sales : Single Family Homes



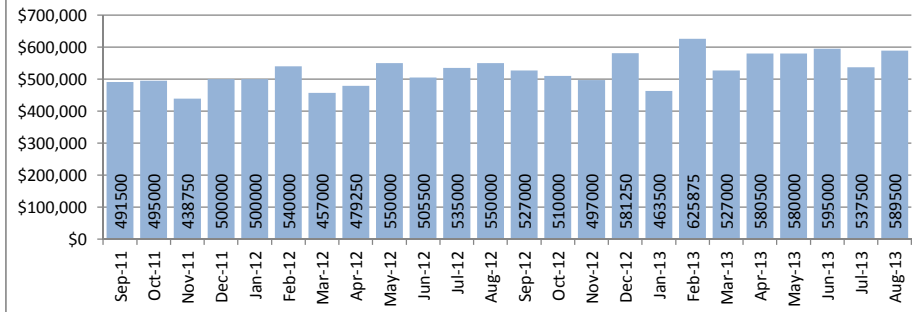
Closed Sales : Condos



Median Sales Price : Single Family Homes



Median Sales Price : Condos



SOURCE: Honolulu Board of REALTORS® , compiled from MLS data.

Local Market Update

August 2013



Kailua - Waimanalo

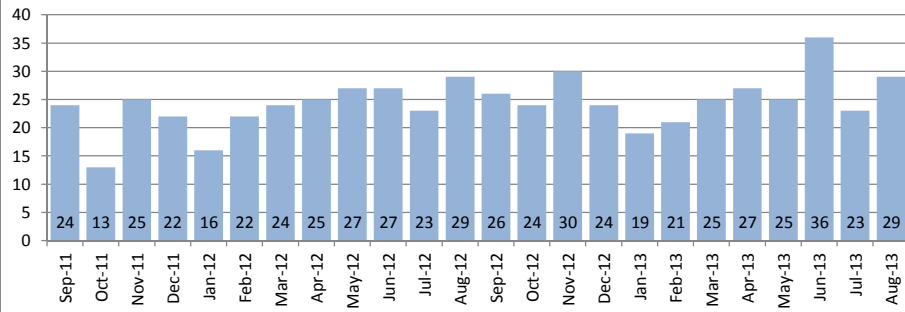
1-4-1 to Selected 1-4-4

August 2013

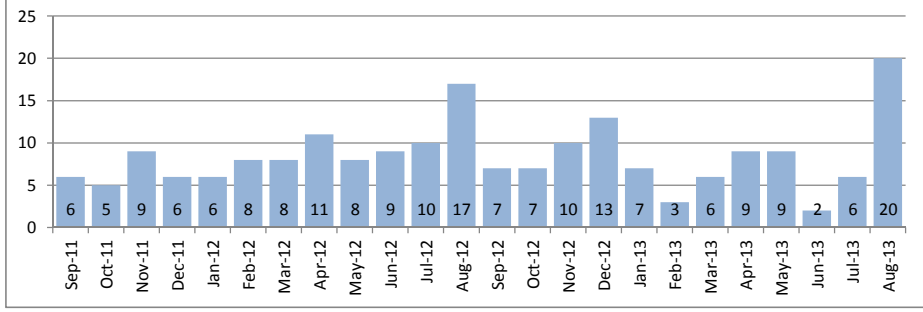
Single Family Homes	August			Year to Date		
	2013	2012	Change	2013	2012	Change
New Listings	37	26	42%	276	229	21%
Closed Sales	29	29	0%	211	194	9%
Median Sales Price	\$890,000	\$775,000	15%	\$875,000	\$782,500	12%
Percent of Original List Price Received	99.4%	97.5%	2%	97.8%	95.4%	3%
Median Days on Market Until Sale	10	23	-57%	15	33	-55%
Inventory of Homes for Sale	97	111	-13%	--	--	--

Condos	August			Year to Date		
	2013	2012	Change	2013	2012	Change
New Listings	11	8	38%	87	81	7%
Closed Sales	20	17	18%	63	79	-20%
Median Sales Price	\$527,500	\$391,000	35%	\$438,000	\$407,000	8%
Percent of Original List Price Received	101.1%	99.0%	2%	101.9%	98.8%	3%
Median Days on Market Until Sale	11	21	-48%	9	25	-64%
Inventory of Homes for Sale	39	36	8%	--	--	--

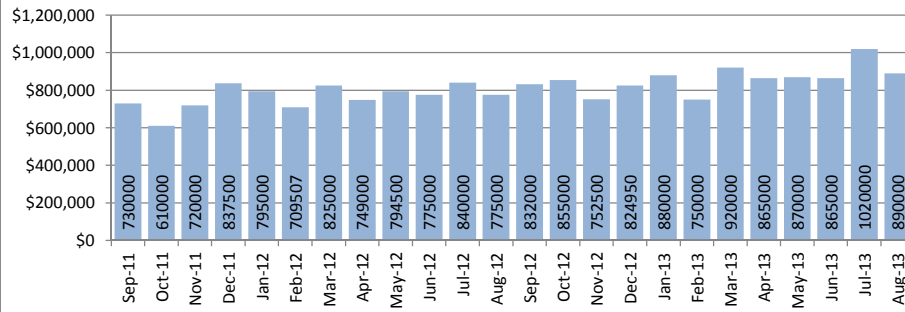
Closed Sales : Single Family Homes



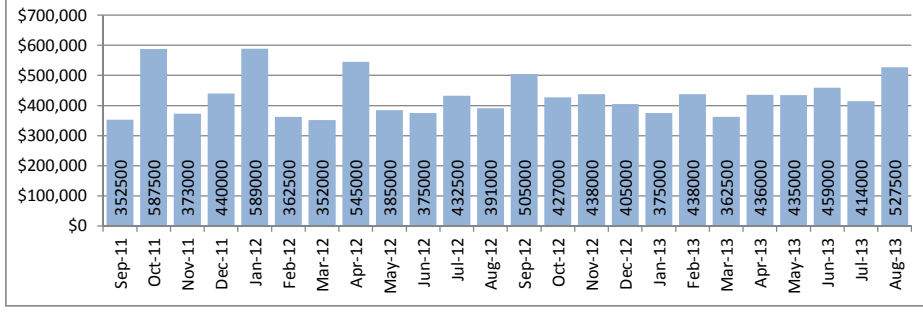
Closed Sales : Condos



Median Sales Price : Single Family Homes



Median Sales Price : Condos



SOURCE: Honolulu Board of REALTORS® , compiled from MLS data.

Local Market Update

August 2013

Kalihi - Palama

1-1-2 to 1-1-7

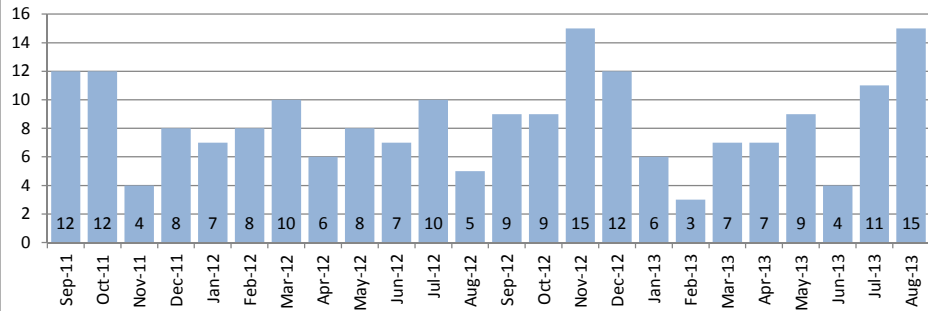


August 2013

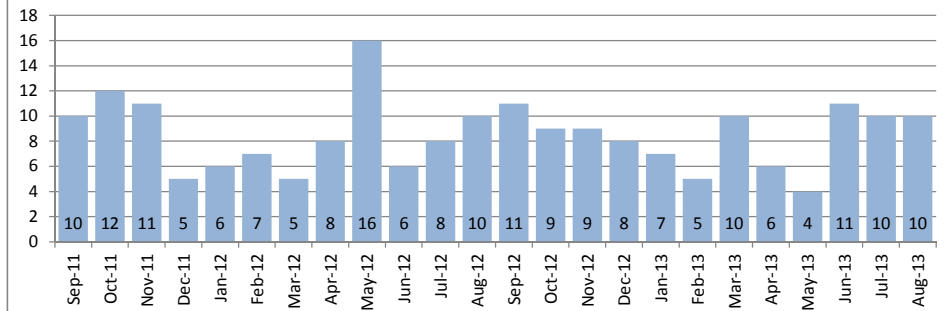
Single Family Homes	August			Year to Date		
	2013	2012	Change	2013	2012	Change
New Listings	13	11	18%	115	89	29%
Closed Sales	15	5	200%	60	63	-5%
Median Sales Price	\$625,000	\$568,000	10%	\$550,000	\$560,000	-2%
Percent of Original List Price Received	91.2%	98.8%	-8%	95.7%	93.6%	2%
Median Days on Market Until Sale	9	16	-44%	25	24	4%
Inventory of Homes for Sale	59	29	103%	--	--	--

Condos	August			Year to Date		
	2013	2012	Change	2013	2012	Change
New Listings	12	5	140%	94	87	8%
Closed Sales	10	10	0%	64	66	-3%
Median Sales Price	\$362,500	\$389,000	-7%	\$367,500	\$316,000	16%
Percent of Original List Price Received	100.3%	98.5%	2%	100.0%	93.4%	7%
Median Days on Market Until Sale	9	80	-89%	18	36	-50%
Inventory of Homes for Sale	36	37	-3%	--	--	--

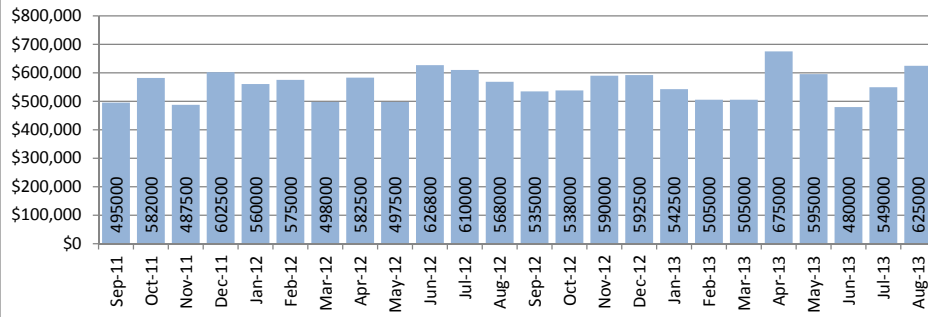
Closed Sales : Single Family Homes



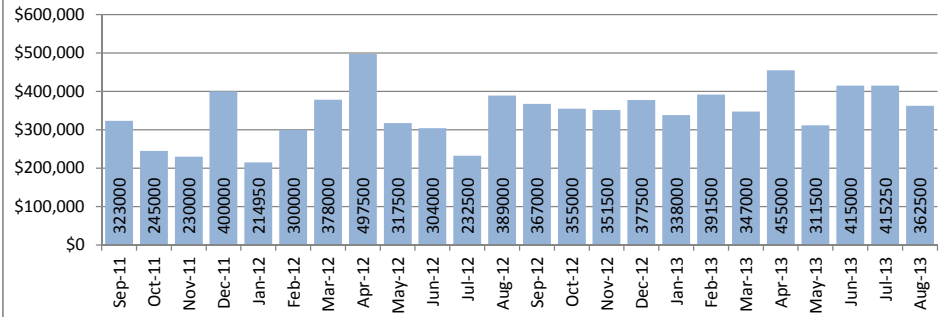
Closed Sales : Condos



Median Sales Price : Single Family Homes



Median Sales Price : Condos



SOURCE: Honolulu Board of REALTORS®, compiled from MLS data.

Local Market Update

August 2013



Kaneohe

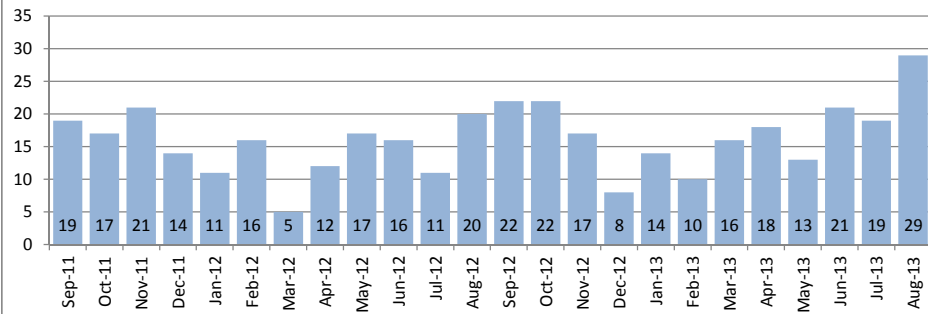
Selected 1-4-4 to 1-4-7

August 2013

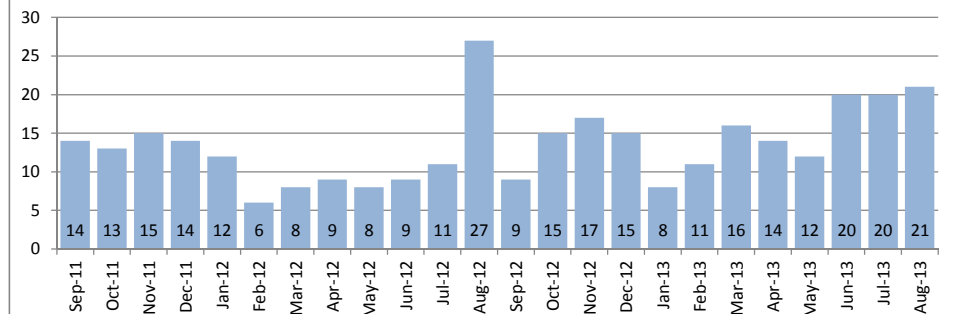
Single Family Homes	August			Year to Date		
	2013	2012	Change	2013	2012	Change
New Listings	21	34	-38%	189	177	7%
Closed Sales	29	20	45%	139	109	28%
Median Sales Price	\$685,000	\$655,250	5%	\$690,000	\$670,000	3%
Percent of Original List Price Received	97.9%	98.9%	-1%	98.6%	97.8%	1%
Median Days on Market Until Sale	26	19	37%	25	29	-14%
Inventory of Homes for Sale	86	84	2%	--	--	--

Condos	August			Year to Date		
	2013	2012	Change	2013	2012	Change
New Listings	20	21	-5%	150	119	26%
Closed Sales	21	27	-22%	125	90	39%
Median Sales Price	\$375,000	\$419,000	-11%	\$422,000	\$409,500	3%
Percent of Original List Price Received	90.9%	100.0%	-9%	99.5%	99.3%	0%
Median Days on Market Until Sale	11	13	-15%	14	29	-52%
Inventory of Homes for Sale	53	58	-9%	--	--	--

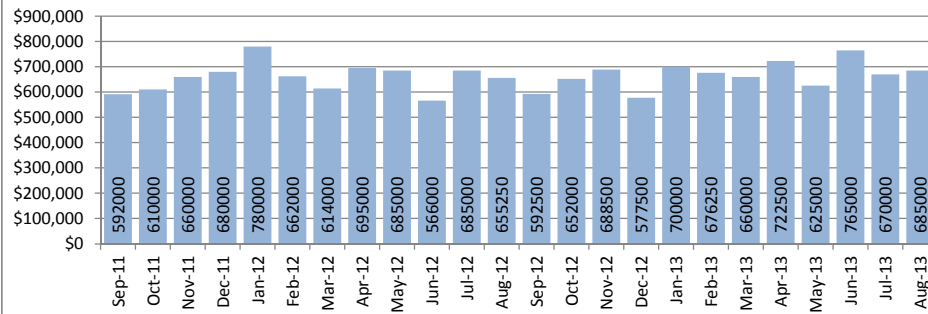
Closed Sales : Single Family Homes



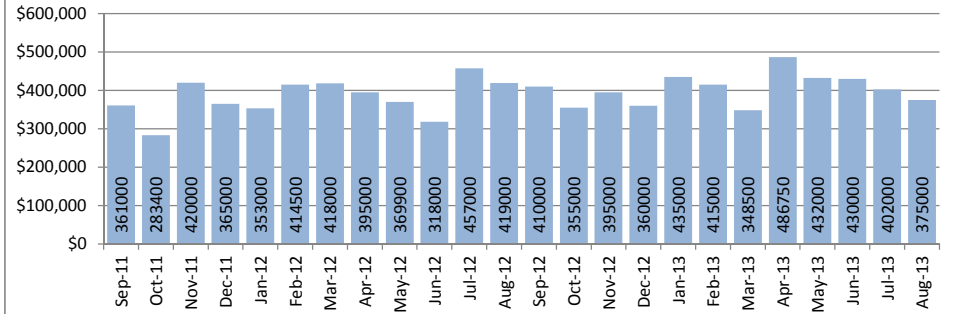
Closed Sales : Condos



Median Sales Price : Single Family Homes



Median Sales Price : Condos



SOURCE: Honolulu Board of REALTORS®, compiled from MLS data.

Local Market Update

August 2013

Kapahulu - Diamond Head

1-3-1 to 1-3-4

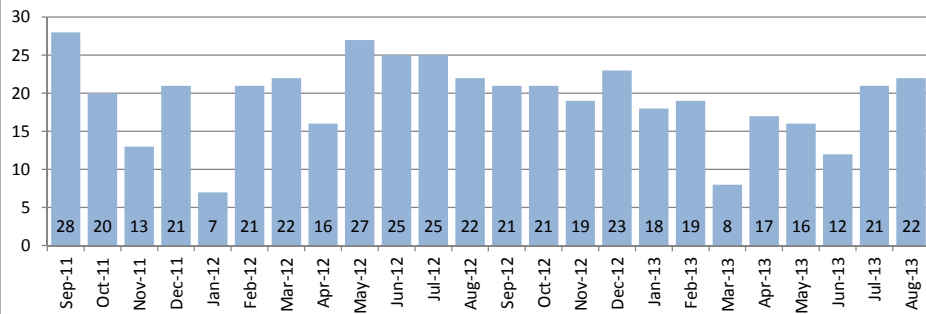


August 2013

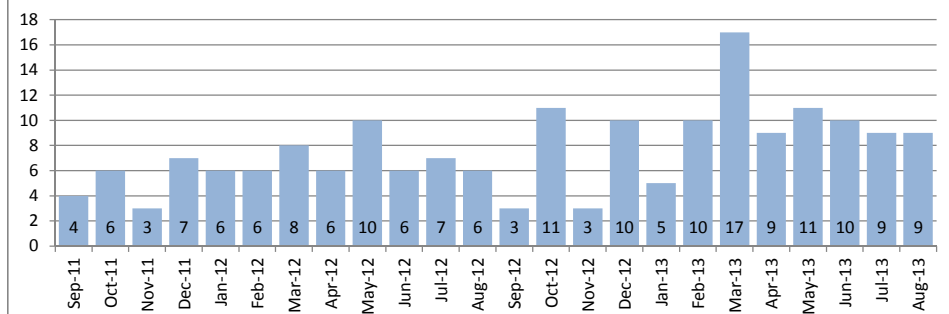
Single Family Homes	August			Year to Date		
	2013	2012	Change	2013	2012	Change
New Listings	27	31	-13%	177	191	-7%
Closed Sales	22	22	0%	134	165	-19%
Median Sales Price	\$891,250	\$839,000	6%	\$826,956	\$778,000	6%
Percent of Original List Price Received	101.0%	95.2%	6%	101.2%	94.3%	7%
Median Days on Market Until Sale	10	31	-68%	14	30	-53%
Inventory of Homes for Sale	63	90	-30%	--	--	--

Condos	August			Year to Date		
	2013	2012	Change	2013	2012	Change
New Listings	11	17	-35%	94	91	3%
Closed Sales	9	6	50%	79	56	41%
Median Sales Price	\$548,000	\$514,500	7%	\$514,000	\$470,000	9%
Percent of Original List Price Received	100.0%	85.5%	17%	97.9%	96.5%	1%
Median Days on Market Until Sale	48	34	41%	28	38	-26%
Inventory of Homes for Sale	47	63	-25%	--	--	--

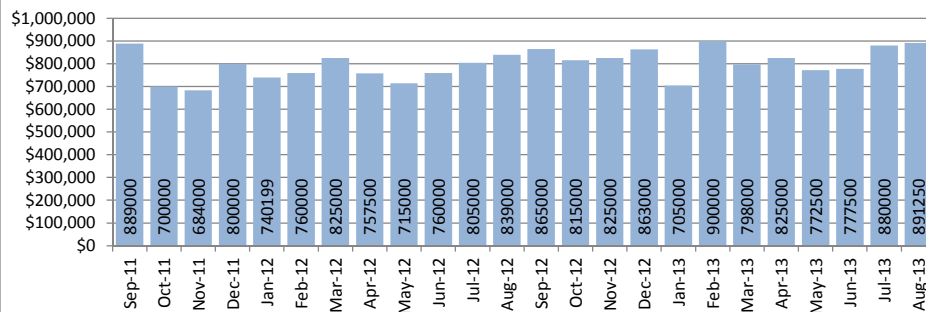
Closed Sales : Single Family Homes



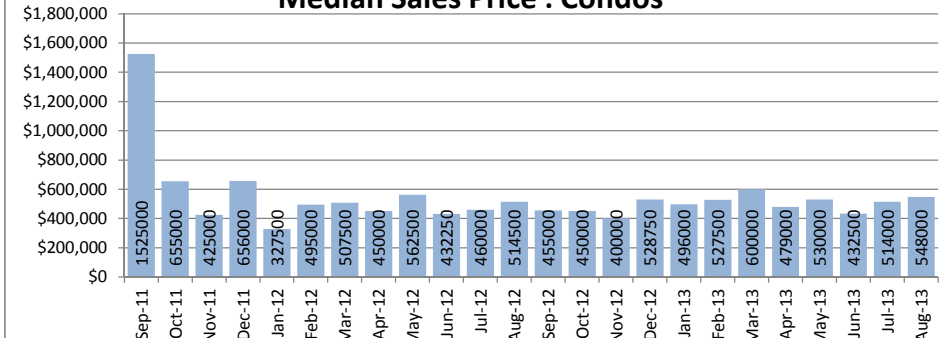
Closed Sales : Condos



Median Sales Price : Single Family Homes



Median Sales Price : Condos



SOURCE: Honolulu Board of REALTORS®, compiled from MLS data.

Local Market Update

August 2013

Makaha - Nanakuli

1-8-1 to 1-8-9

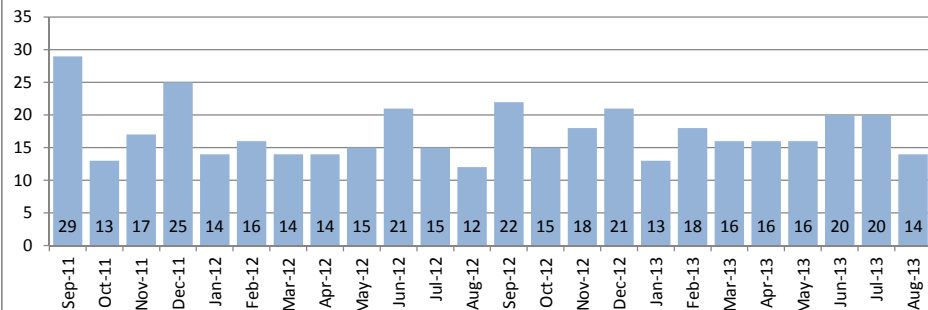


August 2013

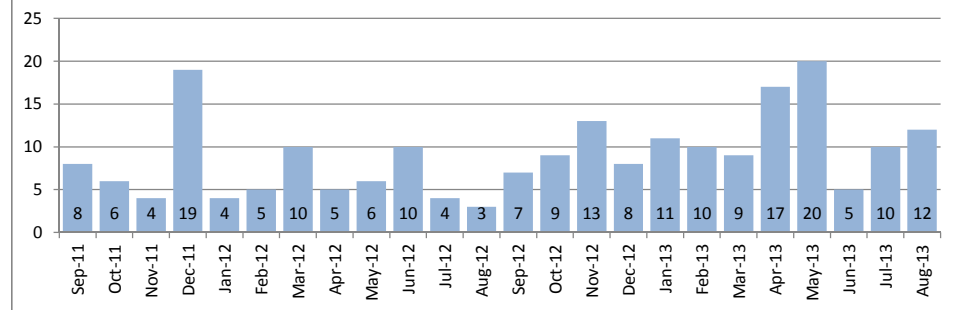
Single Family Homes	August			Year to Date		
	2013	2012	Change	2013	2012	Change
New Listings	38	30	27%	238	217	10%
Closed Sales	14	12	17%	114	130	-12%
Median Sales Price	\$280,000	\$297,500	-6%	\$328,000	\$311,250	5%
Percent of Original List Price Received	92.7%	99.5%	-7%	94.0%	93.8%	0%
Median Days on Market Until Sale	59	37	59%	42	31	35%
Inventory of Homes for Sale	123	115	7%	--	--	--

Condos	August			Year to Date		
	2013	2012	Change	2013	2012	Change
New Listings	14	17	-18%	142	99	43%
Closed Sales	12	3	300%	84	48	75%
Median Sales Price	\$107,500	\$85,000	26%	\$101,250	\$90,000	13%
Percent of Original List Price Received	96.9%	94.4%	3%	89.6%	91.4%	-2%
Median Days on Market Until Sale	33	52	-37%	33	53	-38%
Inventory of Homes for Sale	64	65	-2%	--	--	--

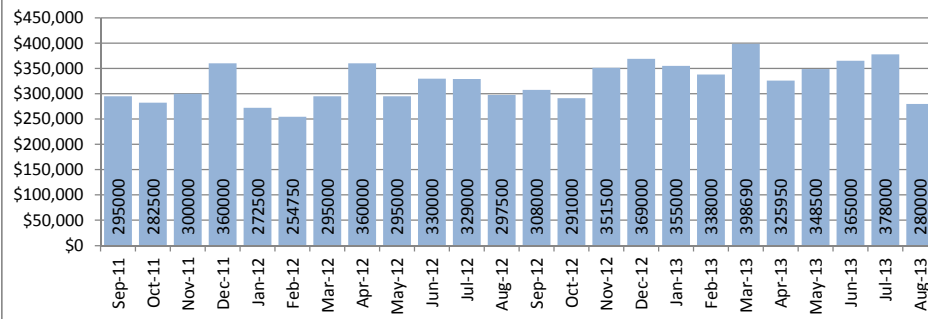
Closed Sales : Single Family Homes



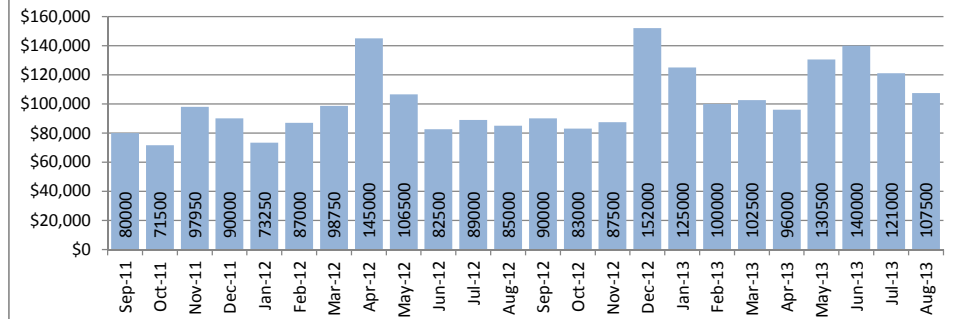
Closed Sales : Condos



Median Sales Price : Single Family Homes



Median Sales Price : Condos



SOURCE: Honolulu Board of REALTORS® , compiled from MLS data.

Local Market Update

August 2013



Makakilo

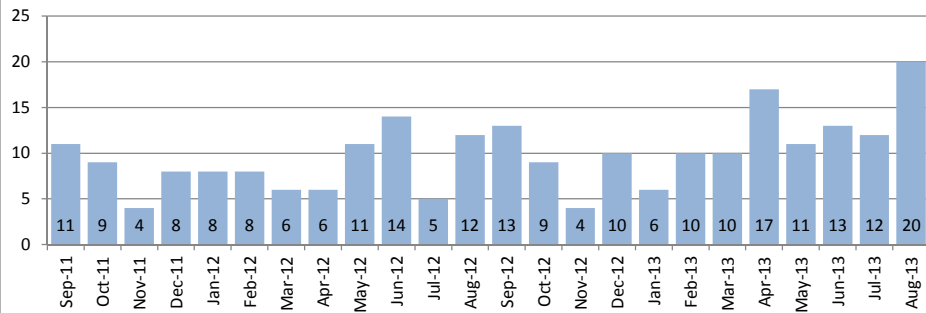
1-9-2 to 1-9-3

August 2013

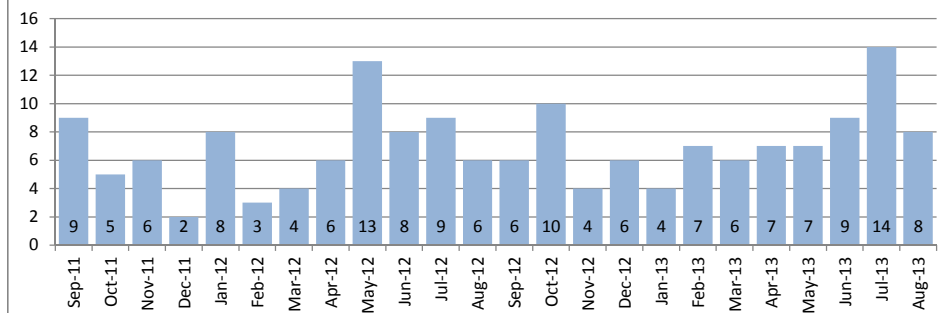
Single Family Homes	August			Year to Date		
	2013	2012	Change	2013	2012	Change
New Listings	19	14	36%	139	102	36%
Closed Sales	20	12	67%	101	73	38%
Median Sales Price	\$590,000	\$572,000	3%	\$565,000	\$565,000	0%
Percent of Original List Price Received	99.3%	99.7%	0%	100.0%	97.6%	2%
Median Days on Market Until Sale	23	50	-54%	20	54	-63%
Inventory of Homes for Sale	58	50	16%	--	--	--

Condos	August			Year to Date		
	2013	2012	Change	2013	2012	Change
New Listings	10	11	-9%	74	69	7%
Closed Sales	8	6	33%	62	57	9%
Median Sales Price	\$287,000	\$263,500	9%	\$259,000	\$250,000	4%
Percent of Original List Price Received	99.3%	101.4%	-2%	96.1%	96.5%	0%
Median Days on Market Until Sale	31	39	-21%	16	22	-27%
Inventory of Homes for Sale	21	20	5%	--	--	--

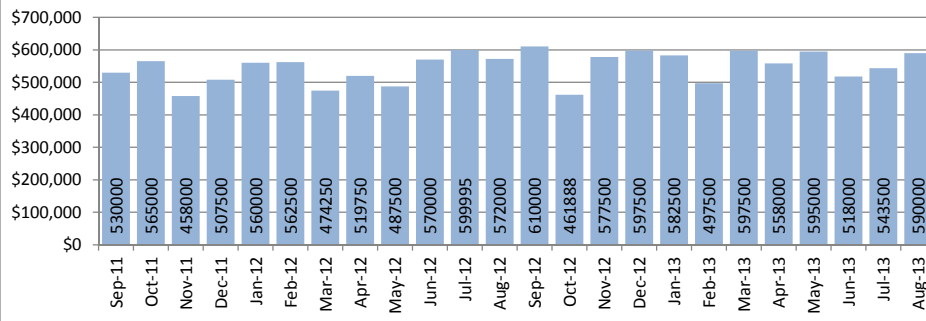
Closed Sales : Single Family Homes



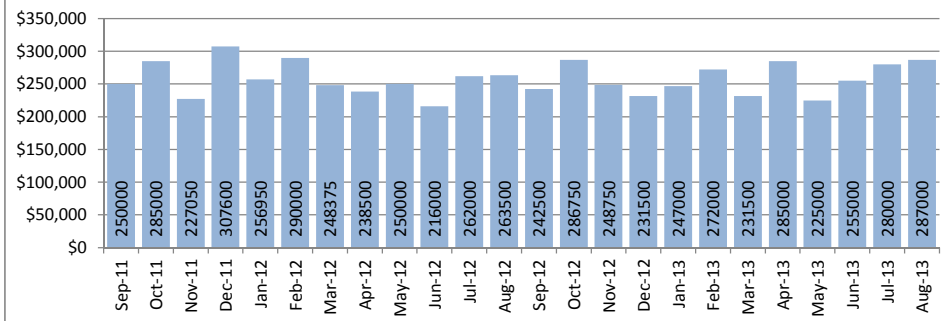
Closed Sales : Condos



Median Sales Price : Single Family Homes



Median Sales Price : Condos



SOURCE: Honolulu Board of REALTORS® , compiled from MLS data.

Local Market Update

August 2013



Makiki - Moiliili

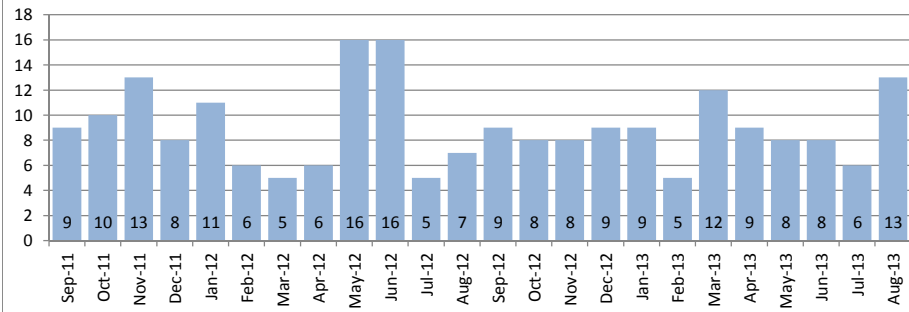
1-2-4 to 1-2-9 (except 1-2-6)

August 2013

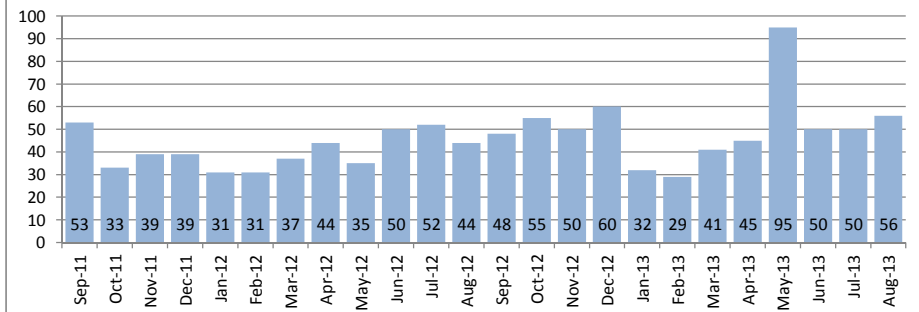
Single Family Homes	August			Year to Date		
	2013	2012	Change	2013	2012	Change
New Listings	11	11	0%	90	90	0%
Closed Sales	13	7	86%	68	72	-6%
Median Sales Price	\$1,045,000	\$961,000	9%	\$970,000	\$910,500	7%
Percent of Original List Price Received	110.1%	101.3%	9%	100.8%	94.8%	6%
Median Days on Market Until Sale	31	39	-21%	31	21	48%
Inventory of Homes for Sale	43	41	5%	--	--	--

Condos	August			Year to Date		
	2013	2012	Change	2013	2012	Change
New Listings	90	62	45%	536	451	19%
Closed Sales	56	44	27%	372	332	12%
Median Sales Price	\$322,500	\$305,000	6%	\$320,000	\$302,000	6%
Percent of Original List Price Received	99.2%	94.7%	5%	98.5%	95.0%	4%
Median Days on Market Until Sale	17	40	-58%	20	31	-35%
Inventory of Homes for Sale	185	196	-6%	--	--	--

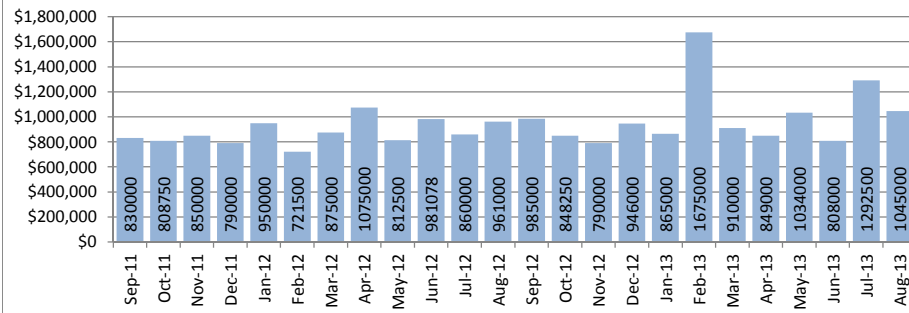
Closed Sales : Single Family Homes



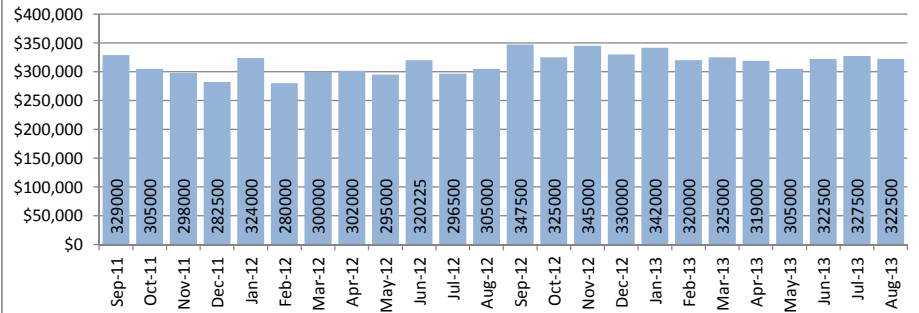
Closed Sales : Condos



Median Sales Price : Single Family Homes



Median Sales Price : Condos



SOURCE: Honolulu Board of REALTORS® , compiled from MLS data.

Local Market Update

August 2013



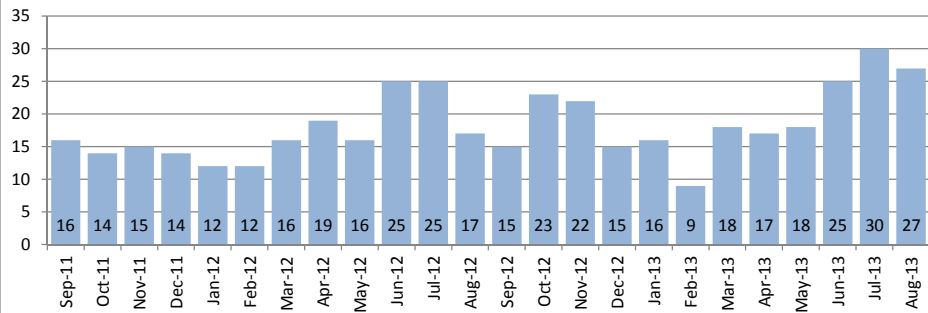
Mililani
Selected 1-9-4 to 1-9-5

August 2013

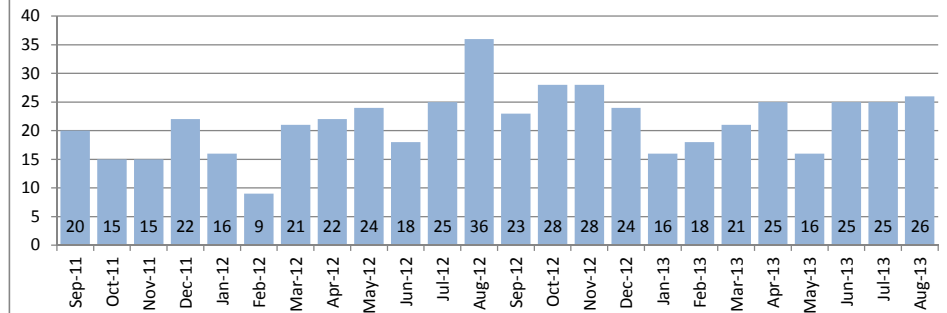
Single Family Homes	August			Year to Date		
	2013	2012	Change	2013	2012	Change
New Listings	23	24	-4%	196	180	9%
Closed Sales	27	17	59%	162	156	4%
Median Sales Price	\$630,000	\$535,000	18%	\$622,500	\$598,500	4%
Percent of Original List Price Received	99.2%	97.3%	2%	100.0%	98.5%	2%
Median Days on Market Until Sale	31	19	63%	16	28	-43%
Inventory of Homes for Sale	59	58	2%	--	--	--

Condos	August			Year to Date		
	2013	2012	Change	2013	2012	Change
New Listings	36	27	33%	215	241	-11%
Closed Sales	26	36	-28%	174	186	-6%
Median Sales Price	\$247,500	\$307,500	-20%	\$298,250	\$286,000	4%
Percent of Original List Price Received	96.1%	97.8%	-2%	99.5%	97.8%	2%
Median Days on Market Until Sale	17	20	-15%	16	26	-38%
Inventory of Homes for Sale	46	82	-44%	--	--	--

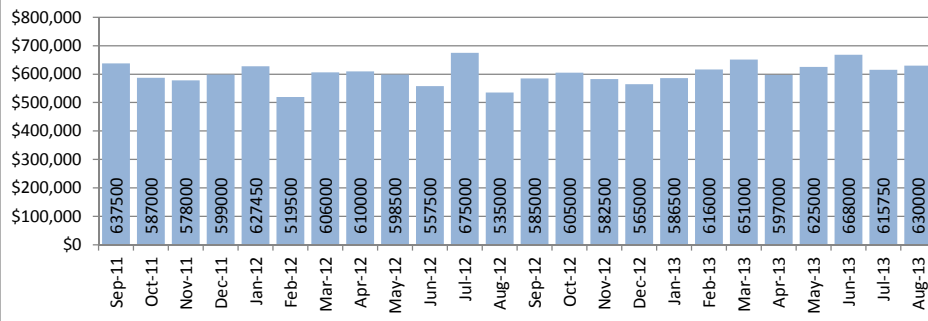
Closed Sales : Single Family Homes



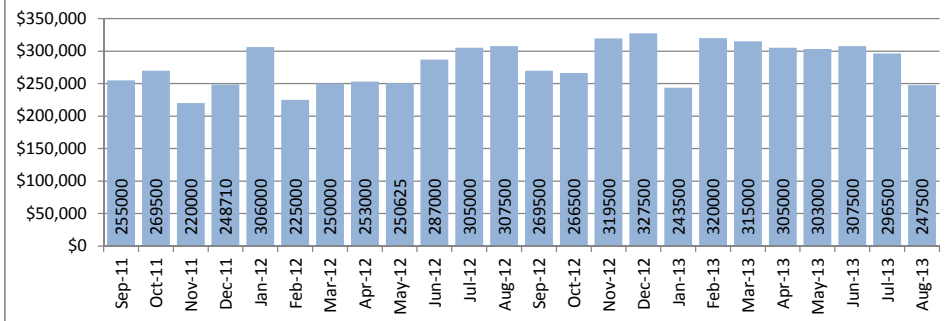
Closed Sales : Condos



Median Sales Price : Single Family Homes



Median Sales Price : Condos



SOURCE: Honolulu Board of REALTORS®, compiled from MLS data.

Local Market Update

August 2013

Moanalua - Salt Lake

1-1-1

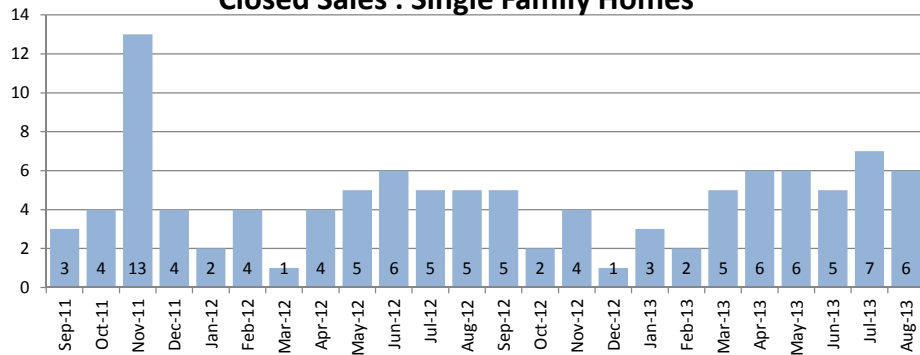


August 2013

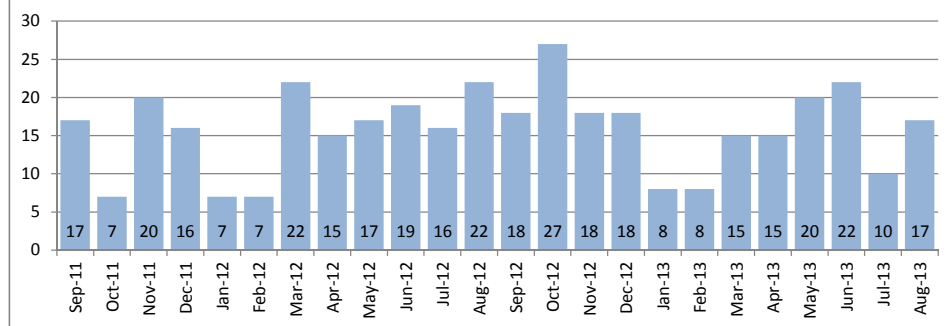
Single Family Homes	August			Year to Date		
	2013	2012	Change	2013	2012	Change
New Listings	9	3	200%	57	36	58%
Closed Sales	6	5	20%	41	32	28%
Median Sales Price	\$788,500	\$756,000	4%	\$760,000	\$700,000	9%
Percent of Original List Price Received	102.0%	102.9%	-1%	101.5%	98.2%	3%
Median Days on Market Until Sale	12	9	33%	29	21	38%
Inventory of Homes for Sale	15	15	0%	--	--	--

Condos	August			Year to Date		
	2013	2012	Change	2013	2012	Change
New Listings	23	26	-12%	161	164	-2%
Closed Sales	17	22	-23%	117	126	-7%
Median Sales Price	\$275,000	\$262,000	5%	\$295,000	\$273,500	8%
Percent of Original List Price Received	98.6%	97.9%	1%	98.7%	95.8%	3%
Median Days on Market Until Sale	20	17	18%	17	21	-19%
Inventory of Homes for Sale	58	63	-8%	--	--	--

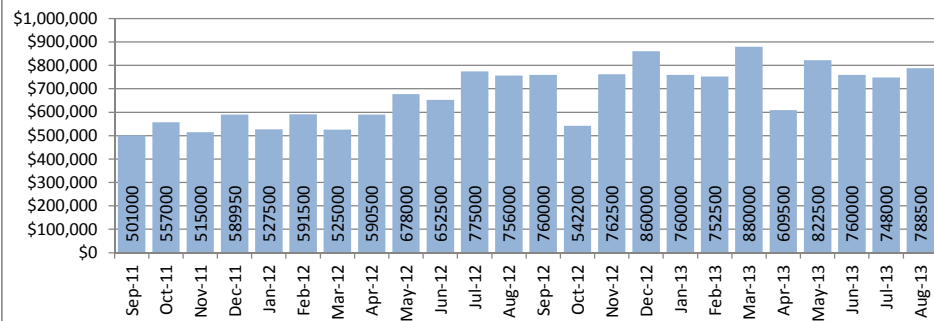
Closed Sales : Single Family Homes



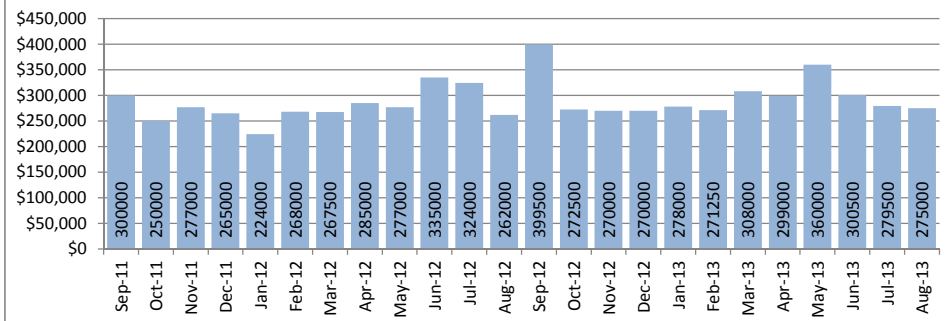
Closed Sales : Condos



Median Sales Price : Single Family Homes



Median Sales Price : Condos



SOURCE: Honolulu Board of REALTORS®, compiled from MLS data.

Local Market Update

August 2013

North Shore

1-5-6 to 1-6-9

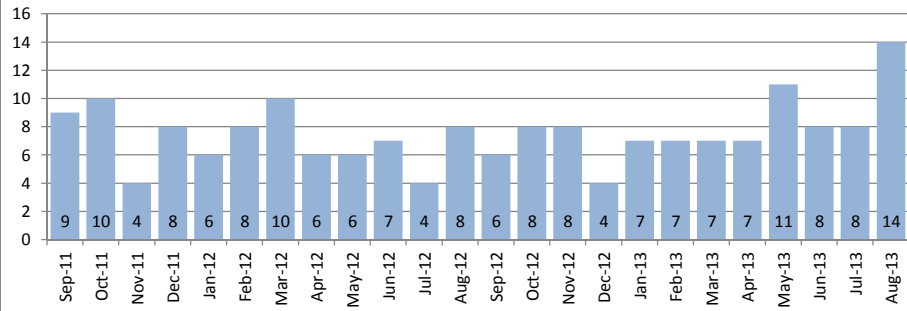


August 2013

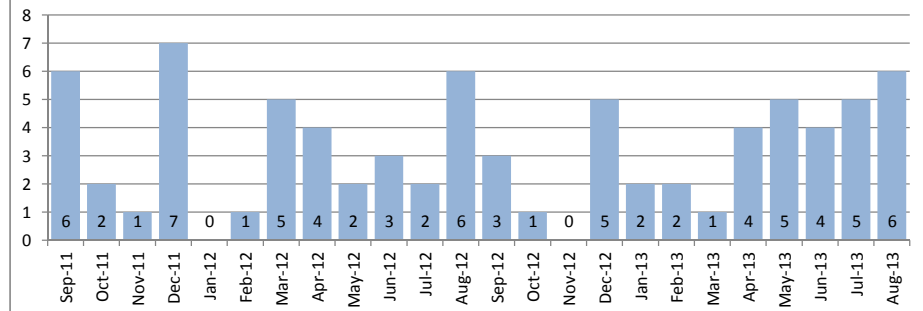
Single Family Homes	August			Year to Date		
	2013	2012	Change	2013	2012	Change
New Listings	13	11	18%	117	86	36%
Closed Sales	14	8	75%	65	56	16%
Median Sales Price	\$745,000	\$827,500	-10%	\$663,500	\$694,000	-4%
Percent of Original List Price Received	95.2%	99.2%	-4%	94.9%	94.4%	1%
Median Days on Market Until Sale	70	33	112%	37	57	-35%
Inventory of Homes for Sale	61	63	-3%	--	--	--

Condos	August			Year to Date		
	2013	2012	Change	2013	2012	Change
New Listings	9	6	50%	42	38	11%
Closed Sales	6	6	0%	30	23	30%
Median Sales Price	\$415,000	\$360,000	15%	\$382,500	\$295,000	30%
Percent of Original List Price Received	99.4%	91.4%	9%	98.8%	92.5%	7%
Median Days on Market Until Sale	32	120	-73%	53	91	-42%
Inventory of Homes for Sale	18	32	-44%	--	--	--

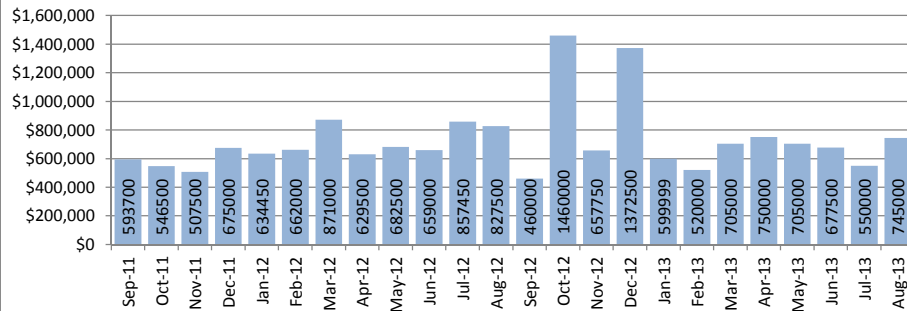
Closed Sales : Single Family Homes



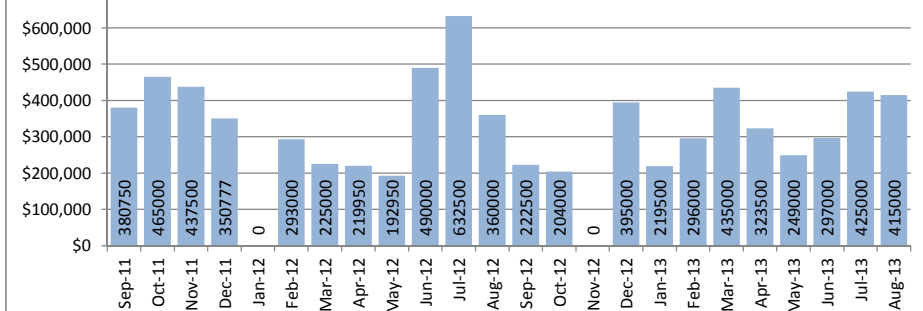
Closed Sales : Condos



Median Sales Price : Single Family Homes



Median Sales Price : Condos



SOURCE: Honolulu Board of REALTORS®, compiled from MLS data.

Local Market Update

August 2013

Pearl City - Aiea

1-9-6 to 1-9-9

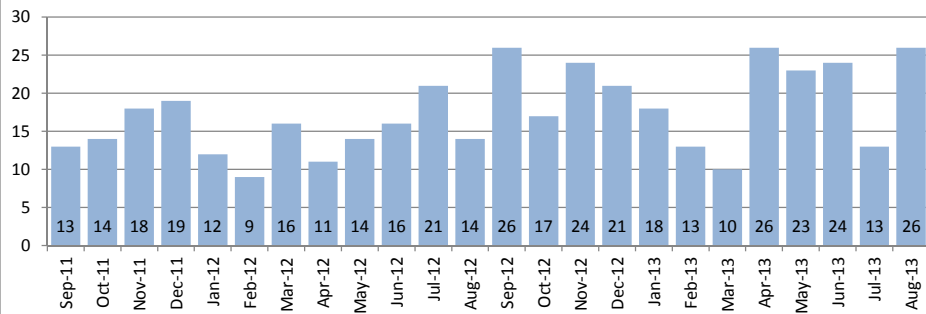


August 2013

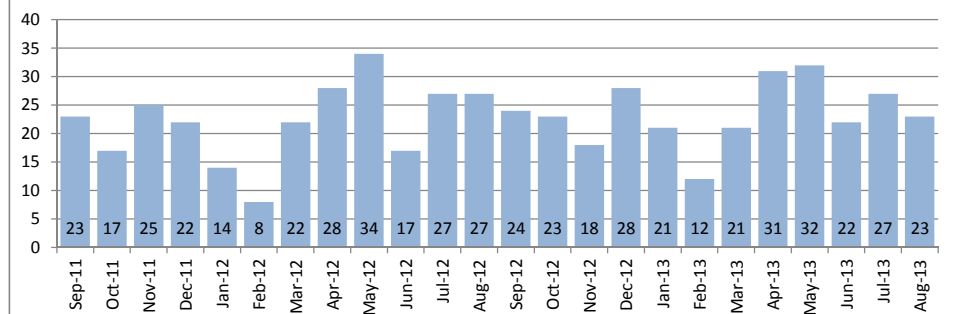
Single Family Homes	August			Year to Date		
	2013	2012	Change	2013	2012	Change
New Listings	19	26	-27%	193	160	21%
Closed Sales	26	14	86%	157	115	37%
Median Sales Price	\$649,500	\$555,000	17%	\$597,500	\$576,000	4%
Percent of Original List Price Received	100.0%	95.0%	5%	96.4%	95.2%	1%
Median Days on Market Until Sale	16	48	-67%	23	29	-21%
Inventory of Homes for Sale	57	65	-12%	--	--	--

Condos	August			Year to Date		
	2013	2012	Change	2013	2012	Change
New Listings	50	24	108%	274	219	25%
Closed Sales	23	27	-15%	193	185	4%
Median Sales Price	\$345,000	\$274,000	26%	\$285,000	\$270,000	6%
Percent of Original List Price Received	98.9%	96.1%	3%	100.0%	95.1%	5%
Median Days on Market Until Sale	10	24	-58%	15	40	-63%
Inventory of Homes for Sale	84	85	-1%	--	--	--

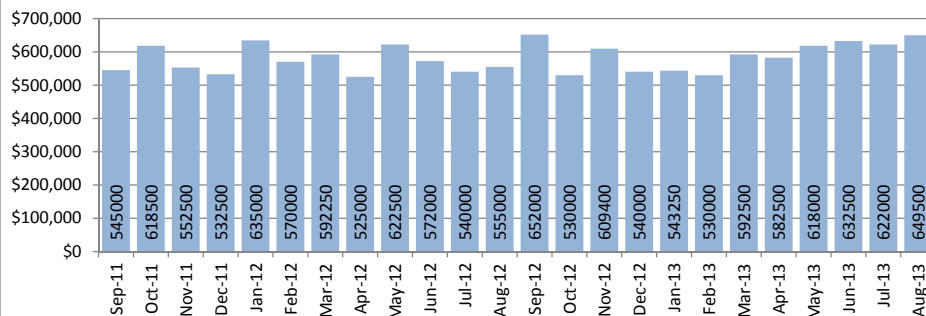
Closed Sales : Single Family Homes



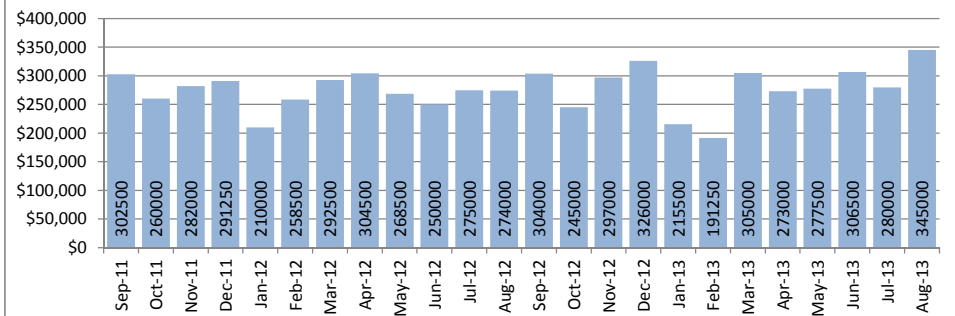
Closed Sales : Condos



Median Sales Price : Single Family Homes



Median Sales Price : Condos



SOURCE: Honolulu Board of REALTORS®, compiled from MLS data.

Local Market Update

August 2013



Wahiawa

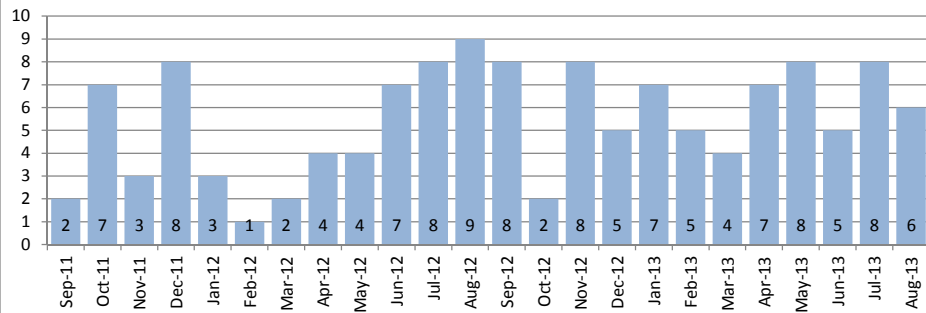
1-7-1 to 1-7-7

August 2013

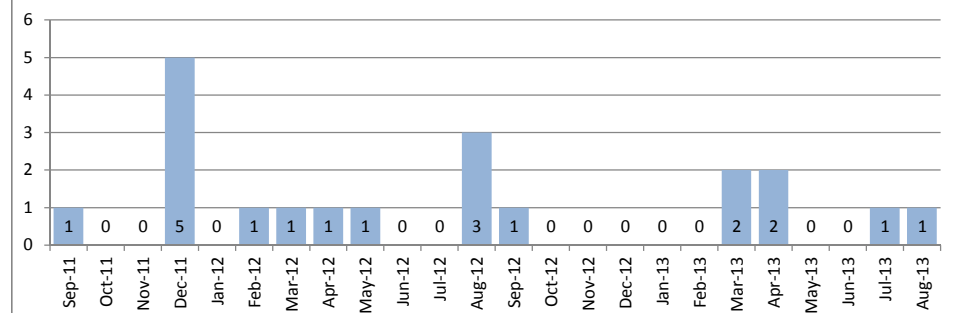
Single Family Homes	August			Year to Date		
	2013	2012	Change	2013	2012	Change
New Listings	12	8	50%	74	60	23%
Closed Sales	6	9	-33%	49	38	29%
Median Sales Price	\$467,500	\$407,000	15%	\$415,000	\$390,000	6%
Percent of Original List Price Received	101.6%	93.6%	9%	92.2%	97.9%	-6%
Median Days on Market Until Sale	12	6	100%	11	25	-56%
Inventory of Homes for Sale	33	31	6%	--	--	--

Condos	August			Year to Date		
	2013	2012	Change	2013	2012	Change
New Listings	2	1	100%	9	15	-40%
Closed Sales	1	3	-67%	9	8	13%
Median Sales Price	\$161,000	\$96,000	68%	\$145,000	\$112,500	29%
Percent of Original List Price Received	95.8%	83.5%	15%	93.5%	91.9%	2%
Median Days on Market Until Sale	15	60	-75%	40	70	-43%
Inventory of Homes for Sale	6	15	-60%	--	--	--

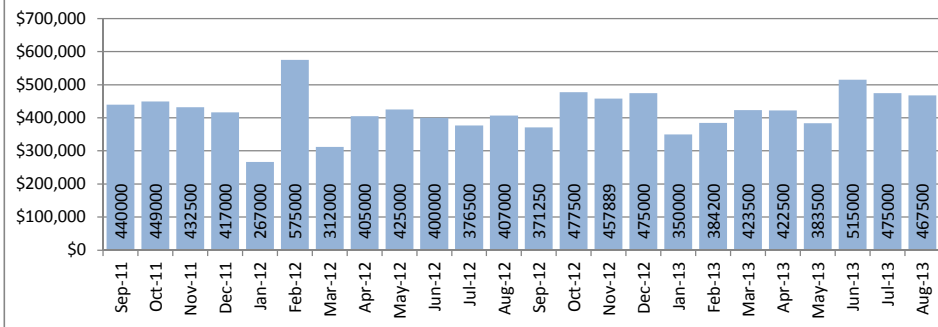
Closed Sales : Single Family Homes



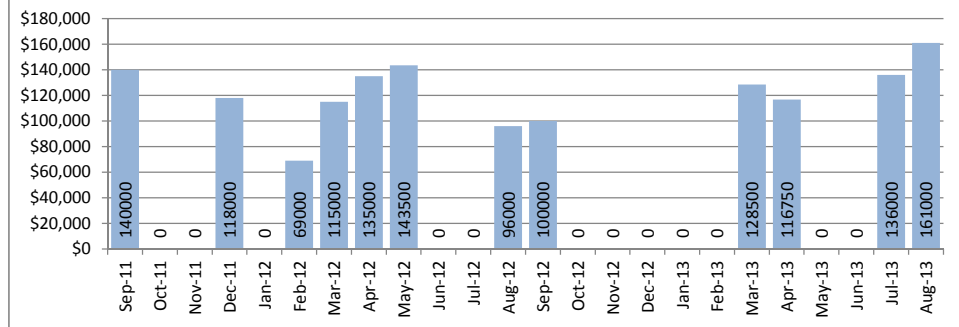
Closed Sales : Condos



Median Sales Price : Single Family Homes



Median Sales Price : Condos



SOURCE: Honolulu Board of REALTORS®, compiled from MLS data.

Local Market Update

August 2013



Waialae - Kahala

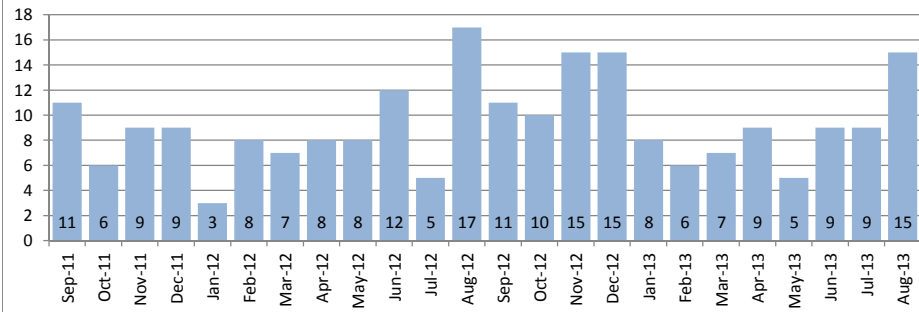
1-3-5

August 2013

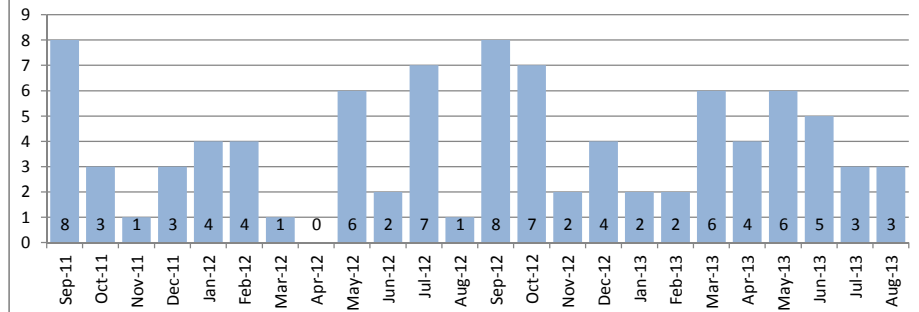
Single Family Homes	August			Year to Date		
	2013	2012	Change	2013	2012	Change
New Listings	14	13	8%	96	82	17%
Closed Sales	15	17	-12%	68	69	-1%
Median Sales Price	\$1,420,000	\$1,679,470	-15%	\$1,565,000	\$1,382,000	13%
Percent of Original List Price Received	101.5%	94.5%	7%	102.6%	92.3%	11%
Median Days on Market Until Sale	10	27	-63%	24	46	-48%
Inventory of Homes for Sale	52	58	-10%	--	--	--

Condos	August			Year to Date		
	2013	2012	Change	2013	2012	Change
New Listings	6	5	20%	39	40	-3%
Closed Sales	3	1	200%	31	27	15%
Median Sales Price	\$459,000	\$115,000	299%	\$438,000	\$410,850	7%
Percent of Original List Price Received	100.0%	76.7%	30%	95.8%	95.5%	0%
Median Days on Market Until Sale	40	92	-57%	40	33	21%
Inventory of Homes for Sale	15	15	0%	--	--	--

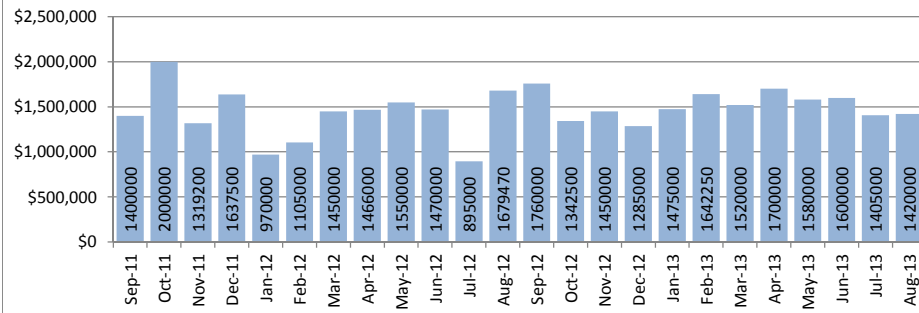
Closed Sales : Single Family Homes



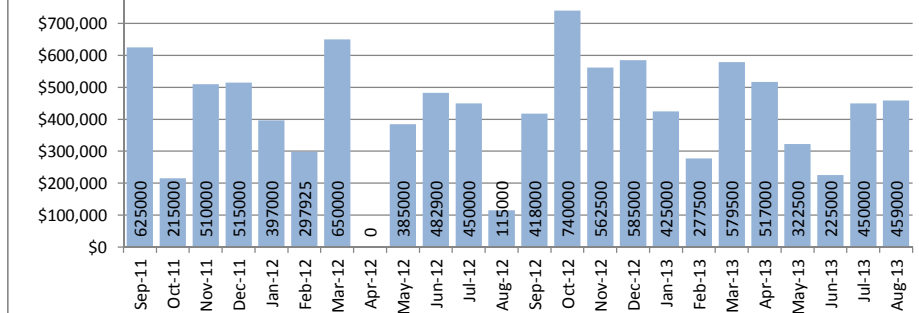
Closed Sales : Condos



Median Sales Price : Single Family Homes



Median Sales Price : Condos



SOURCE: Honolulu Board of REALTORS® , compiled from MLS data.

Local Market Update

August 2013



Waikiki

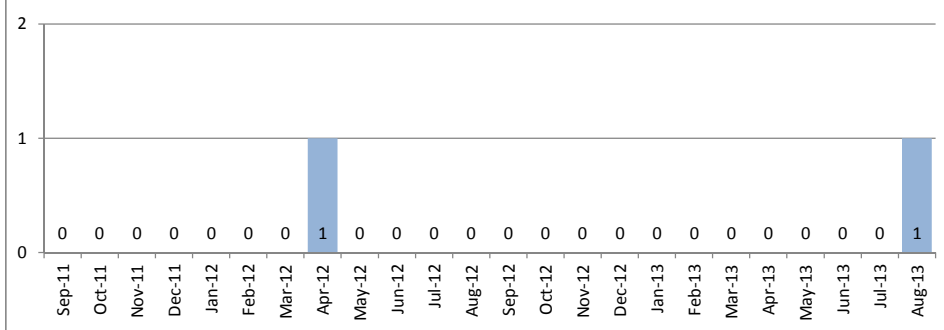
1-2-6

August 2013

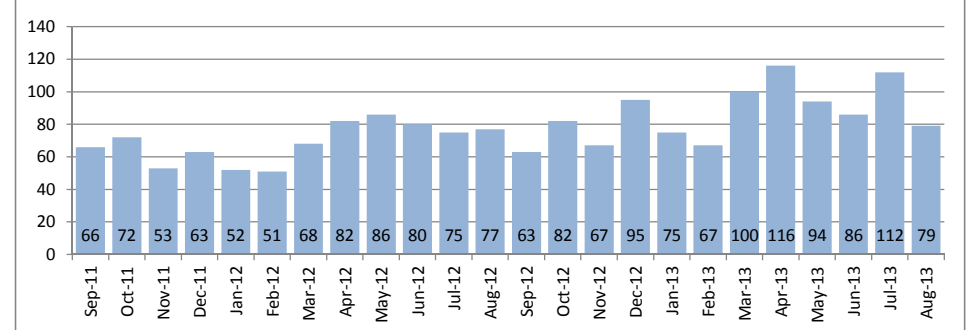
Single Family Homes	August			Year to Date		
	2013	2012	Change	2013	2012	Change
New Listings	0	0	--	2	1	100%
Closed Sales	1	0	--	1	1	0%
Median Sales Price	\$131,000	\$0	--	\$131,000	\$835,000	-84%
Percent of Original List Price Received	87.9%	0.0%	--	87.9%	92.9%	-5%
Median Days on Market Until Sale	42	0	--	42	42	0%
Inventory of Homes for Sale	2	0	--	--	--	--

Condos	August			Year to Date		
	2013	2012	Change	2013	2012	Change
New Listings	127	126	1%	1040	857	21%
Closed Sales	79	77	3%	747	597	25%
Median Sales Price	\$380,000	\$325,000	17%	\$329,000	\$355,000	-7%
Percent of Original List Price Received	98.7%	95.6%	3%	95.4%	29.0%	229%
Median Days on Market Until Sale	39	30	30%	32	40	-20%
Inventory of Homes for Sale	448	518	-14%	--	--	--

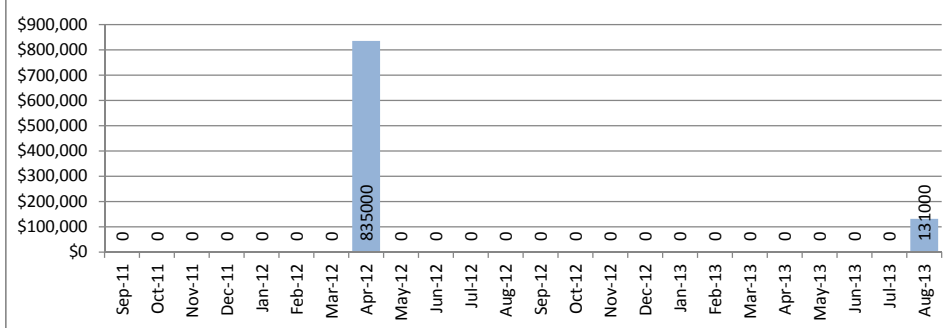
Closed Sales : Single Family Homes



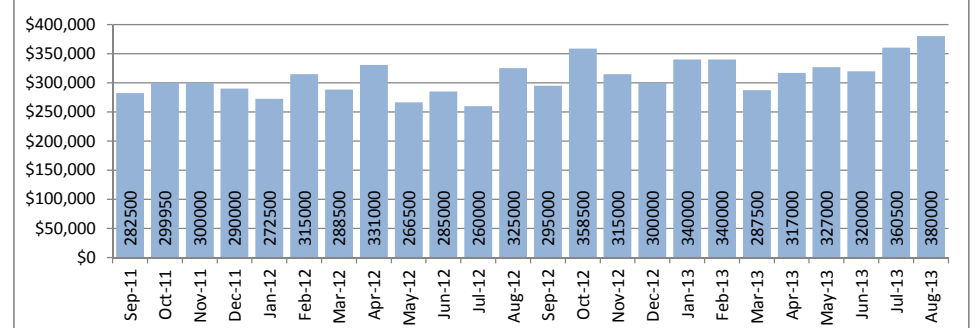
Closed Sales : Condos



Median Sales Price : Single Family Homes



Median Sales Price : Condos



SOURCE: Honolulu Board of REALTORS®, compiled from MLS data.

Local Market Update

August 2013



Waipahu

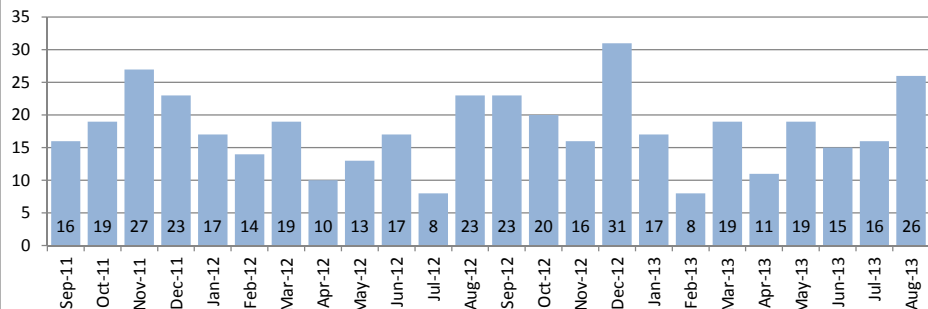
1-9-4

August 2013

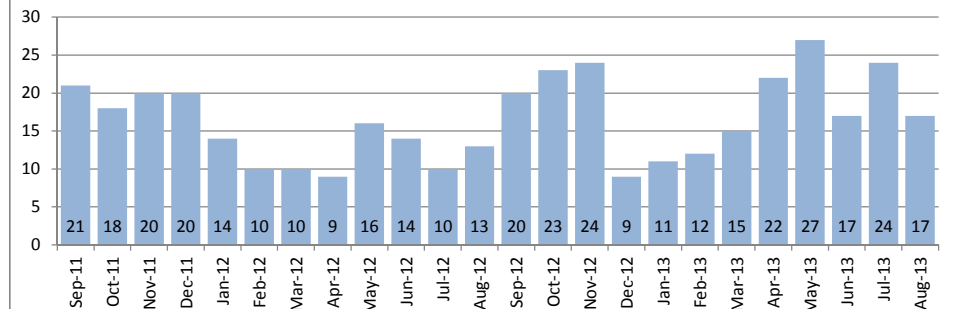
Single Family Homes	August			Year to Date		
	2013	2012	Change	2013	2012	Change
New Listings	17	23	-26%	171	144	19%
Closed Sales	26	23	13%	134	114	18%
Median Sales Price	\$545,000	\$520,000	5%	\$530,000	\$485,000	9%
Percent of Original List Price Received	97.0%	100.0%	-3%	98.3%	95.1%	3%
Median Days on Market Until Sale	21	22	-5%	21	31	-32%
Inventory of Homes for Sale	77	67	15%	--	--	--

Condos	August			Year to Date		
	2013	2012	Change	2013	2012	Change
New Listings	25	14	79%	187	146	28%
Closed Sales	17	13	31%	147	88	67%
Median Sales Price	\$263,000	\$315,000	-17%	\$270,000	\$255,500	6%
Percent of Original List Price Received	103.1%	100.0%	3%	101.9%	92.9%	10%
Median Days on Market Until Sale	8	14	-43%	12	29	-59%
Inventory of Homes for Sale	46	63	-27%	--	--	--

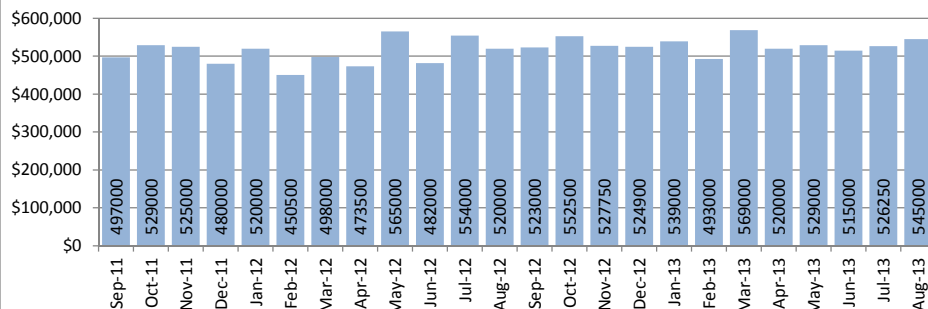
Closed Sales : Single Family Homes



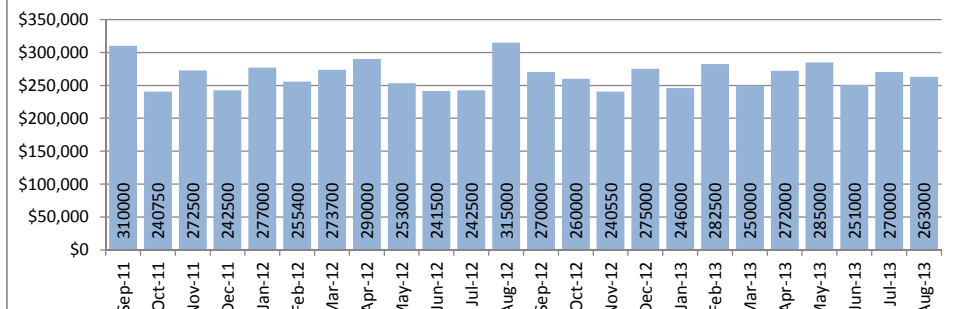
Closed Sales : Condos



Median Sales Price : Single Family Homes



Median Sales Price : Condos



SOURCE: Honolulu Board of REALTORS® , compiled from MLS data.

Local Market Update

August 2013

Windward Coast

1-4-8 to 1-5-5

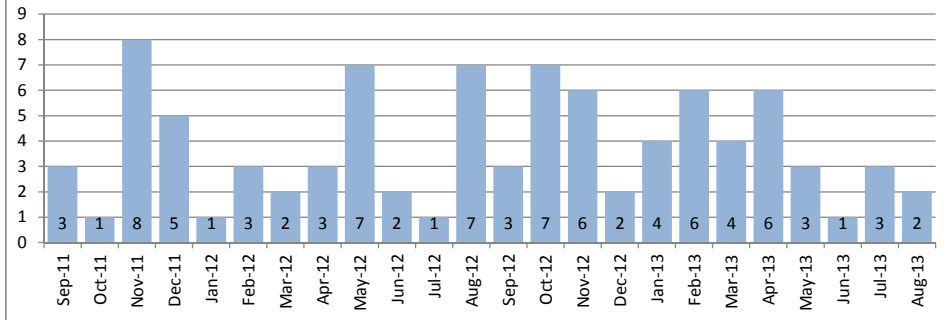


August 2013

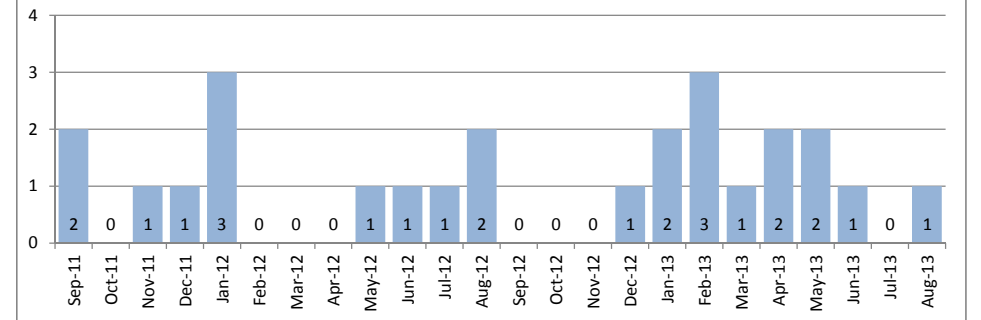
Single Family Homes	August			Year to Date		
	2013	2012	Change	2013	2012	Change
New Listings	13	3	333%	67	67	0%
Closed Sales	2	7	-71%	27	29	-7%
Median Sales Price	\$573,500	\$530,000	8%	\$584,000	\$460,000	27%
Percent of Original List Price Received	98.0%	88.5%	11%	86.5%	98.9%	-13%
Median Days on Market Until Sale	102	22	364%	49	30	63%
Inventory of Homes for Sale	42	47	-11%	--	--	--

Condos	August			Year to Date		
	2013	2012	Change	2013	2012	Change
New Listings	2	0	-	23	16	44%
Closed Sales	1	2	-50%	12	9	33%
Median Sales Price	\$140,000	\$145,000	-3%	\$192,500	\$185,000	4%
Percent of Original List Price Received	92.9%	98.3%	-5%	95.3%	100.0%	-5%
Median Days on Market Until Sale	146	32	356%	51	56	-9%
Inventory of Homes for Sale	11	11	0%	--	--	--

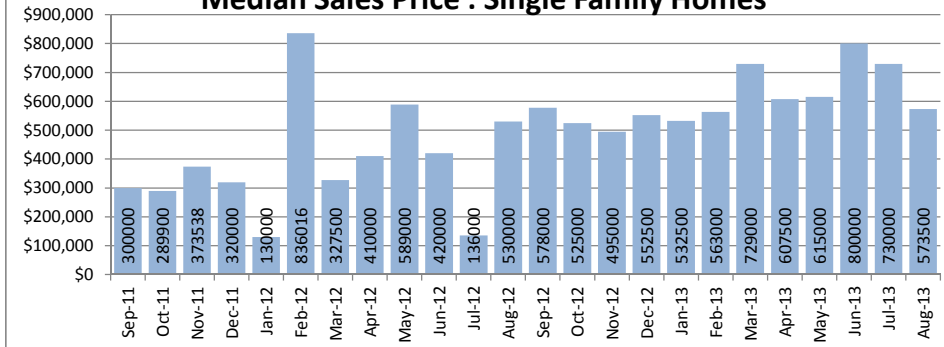
Closed Sales : Single Family Homes



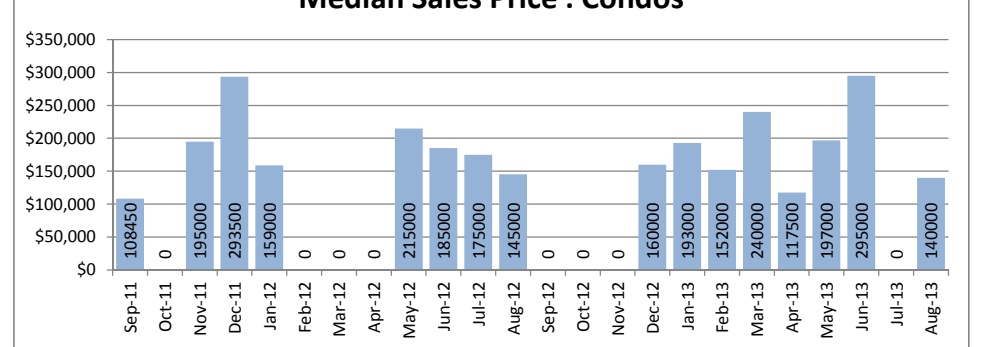
Closed Sales : Condos



Median Sales Price : Single Family Homes



Median Sales Price : Condos



SOURCE: Honolulu Board of REALTORS®, compiled from MLS data.

Single Family Solds - August 2013 vs 2012 (Based on region and neighborhood groupings as listed in MLS) - Page 1 of 4

Central Region	2012 Median	2013 Median	+/-	+/-	2012 Sold	2013 Sold	+/-	+/-
LAUNANI VALLEY	\$ 500,000	\$ 605,000	21.0%	\$105,000	1	1	0.0%	0
MILILANI AREA	\$ 545,000	\$ 610,000	11.9%	\$65,000	13	12	-7.7%	-1
MILILANI MAUKA	\$ 670,000	\$ 780,000	16.4%	\$110,000	9	11	22.2%	2
WAHIAWA AREA	\$ 398,500	\$ 410,000	2.9%	\$11,500	4	1	-75.0%	-3
WAHIAWA HEIGHTS	\$ 452,250	\$ 525,000	16.1%	\$72,750	4	4	0.0%	0
WAHIAWA PARK	\$ 385,000	\$ 407,000	5.7%	\$22,000	1	1	0.0%	0
WAIPIO ACRES/WAIKALANI WOOD	\$ 450,000	\$ 399,000	-11.3%	-\$51,000	1	3	200.0%	2
Central Region	\$ 520,000	\$ 605,000	16.3%	\$85,000	33	33	0.0%	0

Diamond Hd Region	2012 Median	2013 Median	+/-	+/-	2012 Sold	2013 Sold	+/-	+/-
AINA HAINA AREA	\$ 977,500	\$ 775,000	-20.7%	-\$202,500	2	2	0.0%	0
BLACK POINT	\$ 3,038,000	\$ -	-100.0%	-\$3,038,000	1	0	-100.0%	-1
DIAMOND HEAD	\$ 2,150,000	\$ 2,211,250	2.8%	\$61,250	1	4	300.0%	3
HAWAII LOA RIDGE	\$ 1,900,000	\$ -	-100.0%	-\$1,900,000	1	0	-100.0%	-1
KAHALA AREA	\$ 1,870,000	\$ 2,137,500	14.3%	\$267,500	7	4	-42.9%	-3
KAHALA KUA	\$ -	\$ 1,435,000	-	\$1,435,000	0	2	-	2
KAILANI IKI	\$ 707,500	\$ -	-100.0%	-\$707,500	1	0	-100.0%	-1
KAIMUKI	\$ 862,000	\$ 810,000	-6.0%	-\$52,000	8	2	-75.0%	-6
KAPAHULU	\$ 700,250	\$ 887,500	26.7%	\$187,250	4	5	25.0%	1
KULIOUOU	\$ 725,000	\$ 816,000	12.6%	\$91,000	1	1	0.0%	0
MAUNALANI HEIGHTS	\$ 889,000	\$ -	-100.0%	-\$889,000	3	0	-100.0%	-3
PAIKO LAGOON	\$ 2,270,000	\$ -	-100.0%	-\$2,270,000	1	0	-100.0%	-1
PALOLO	\$ 685,000	\$ 780,000	13.9%	\$95,000	2	6	200.0%	4
PUUPANINI	\$ 720,000	\$ -	-100.0%	-\$720,000	1	0	-100.0%	-1
ST. LOUIS	\$ 476,000	\$ 1,075,000	125.8%	\$599,000	1	2	100.0%	1
WAIALAE G/C	\$ 1,427,235	\$ 3,350,000	134.7%	\$1,922,765	2	1	-50.0%	-1
WAIALAE IKI	\$ 1,105,000	\$ 1,550,000	40.3%	\$445,000	3	4	33.3%	1
WAIALAE NUI RDGE	\$ 780,000	\$ 1,068,325	37.0%	\$288,325	3	2	-33.3%	-1
WAIALAE NUI LWR	\$ -	\$ 740,000	-	\$740,000	0	2	-	2
WILHELMINA	\$ 1,020,000	\$ 949,000	-7.0%	-\$71,000	2	3	50.0%	1
Diamond Hd Region	\$ 899,500	\$ 934,500	3.9%	\$35,000	44	40	-9.1%	-4

Hawaii Kai Region	2012 Median	2013 Median	+/-	+/-	2012 Sold	2013 Sold	+/-	+/-
ANCHORAGE	\$ -	\$ 1,109,000	-	\$1,109,000	0	2	-	2
HAAHIONE-LOWER	\$ -	\$ 925,000	-	\$925,000	0	1	-	1
HAAHIONE-UPPER	\$ -	\$ 1,357,500	-	\$1,357,500	0	2	-	2
KALAMA VALLEY	\$ 693,000	\$ 816,000	17.7%	\$123,000	1	2	100.0%	1
KAMILOIKI	\$ 640,000	\$ 715,000	11.7%	\$75,000	1	1	0.0%	0
KAMILO NUI	\$ -	\$ 1,349,000	-	\$1,349,000	0	1	-	1
KOKO VILLAS	\$ 1,125,000	\$ 1,290,000	14.7%	\$165,000	1	2	100.0%	1
KOKO HEAD TERRAC	\$ 680,000	\$ -	-100.0%	-\$680,000	3	0	-100.0%	-3
KOKO KAI	\$ 1,997,500	\$ -	-100.0%	-\$1,997,500	2	0	-100.0%	-2
MARINERS COVE	\$ 995,000	\$ -	-100.0%	-\$995,000	3	0	-100.0%	-3
MARINERS RIDGE	\$ 992,500	\$ 1,000,000	0.8%	\$7,500	2	1	-50.0%	-1
MARINERS VALLEY	\$ -	\$ 900,000	-	\$900,000	0	2	-	2
MARINA WEST	\$ -	\$ 1,100,000	-	\$1,100,000	0	1	-	1
PORTLOCK	\$ 325,000	\$ 2,075,000	538.5%	\$1,750,000	1	1	0.0%	0
QUEENS GATE	\$ -	\$ 1,087,500	-	\$1,087,500	0	2	-	2
TRIANGLE	\$ 1,069,000	\$ 2,350,000	119.8%	\$1,281,000	1	1	0.0%	0
WEST MARINA	\$ 1,275,000	\$ 1,192,250	-6.5%	-\$82,750	1	3	200.0%	2
Hawaii Kai Region	\$ 1,032,000	\$ 1,137,500	10.2%	\$105,500	16	22	37.5%	6

Leeward Region	2012 Median	2013 Median	+/-	+/-	2012 Sold	2013 Sold	+/-	+/-
LUALUALEI	\$ 280,000	\$ 325,000	16.1%	\$45,000	3	2	-33.3%	-1
MAILI	\$ 207,000	\$ 297,500	43.7%	\$90,500	1	7	600.0%	6
MAILI SEA-MAKALAE 1	\$ 400,000	\$ -	-100.0%	-\$400,000	3	0	-100.0%	-3
MAILI SEA-NOHOKAI	\$ -	\$ 410,000	-	\$410,000	0	1	-	1
MAKAHA	\$ 285,000	\$ -	-100.0%	-\$285,000	3	0	-100.0%	-3
WAIANAE	\$ 260,000	\$ 200,000	-23.1%	-\$60,000	2	4	100.0%	2
Leeward Region	\$ 297,500	\$ 280,000	-5.9%	-\$17,500	12	14	16.7%	2

Single Family Solds - August 2013 vs 2012 (Based on region and neighborhood groupings as listed in MLS) - Page 2 of 4

Ewa Plain Region	2012 Median	2013 Median	+/-	+/-	2012 Sold	2013 Sold	+/-	+/-
EWA BEACH	\$ 259,800	\$ 620,000	138.6%	\$360,200	3	3	0.0%	0
EWA GEN ALII COURT	\$ 365,000	\$ 440,000	20.5%	\$75,000	1	1	0.0%	0
EWA GEN CORTEBELLA	\$ 290,000	\$ -	-100.0%	-\$290,000	1	0	-100.0%	-1
EWA GEN HALEAKEA	\$ 720,000	\$ 751,000	4.3%	\$31,000	2	2	0.0%	0
EWA GEN LAS BRISAS	\$ 357,500	\$ -	-100.0%	-\$357,500	2	0	-100.0%	-2
EWA GEN LAULANI-TIDES	\$ 439,500	\$ 460,000	4.7%	\$20,500	2	2	0.0%	0
EWA GEN LATITUDES	\$ -	\$ 632,500	-	\$632,500	0	2	-	2
EWA GEN LOFTS	\$ -	\$ 351,000	-	\$351,000	0	2	-	2
EWA GEN MONTECITO/TUSCANY	\$ 399,950	\$ 478,000	19.5%	\$78,050	3	1	-66.7%	-2
EWA GEN PRESCOTT	\$ 540,000	\$ 592,500	9.7%	\$52,500	1	2	100.0%	1
EWA GEN SODA CREEK	\$ -	\$ 460,000	-	\$460,000	0	1	-	1
EWA GEN SONOMA	\$ -	\$ 630,000	-	\$630,000	0	1	-	1
EWA GEN SUMMERHILL	\$ -	\$ 507,000	-	\$507,000	0	1	-	1
EWA GEN SUN TERRA	\$ 375,000	\$ 555,000	48.0%	\$180,000	2	1	-50.0%	-1
EWA GEN SUN TERRA SOUTH	\$ 426,250	\$ -	-100.0%	-\$426,250	2	0	-100.0%	-2
EWA GEN TERRAZZA	\$ -	\$ 444,500	-	\$444,500	0	2	-	2
EWA GEN TIBURON	\$ 380,000	\$ -	-100.0%	-\$380,000	3	0	-100.0%	-3
EWA GEN TROVARE	\$ -	\$ 565,000	-	\$565,000	0	1	-	1
EWA VILLAGES	\$ 450,000	\$ -	-100.0%	-\$450,000	5	0	-100.0%	-5
HOAKALEI-KA MAKANA	\$ -	\$ 690,000	-	\$690,000	0	5	-	5
HUELANI	\$ 497,500	\$ -	-100.0%	-\$497,500	2	0	-100.0%	-2
KAPOLEI	\$ 572,000	\$ 510,500	-10.8%	-\$61,500	3	4	33.3%	1
KAPOLEI-AELOA	\$ 471,625	\$ -	-100.0%	-\$471,625	2	0	-100.0%	-2
KAPOLEI-KAI	\$ 484,500	\$ 540,000	11.5%	\$55,500	2	1	-50.0%	-1
KAPOLEI KNOLLS	\$ 676,000	\$ 677,000	0.1%	\$1,000	2	3	50.0%	1
KAPOLEI-IWALANI	\$ 459,000	\$ 514,000	12.0%	\$55,000	1	1	0.0%	0
KAPOLEI-KEKUILANI	\$ -	\$ 490,000	-	\$490,000	0	3	-	3
KO OLINA	\$ 890,000	\$ -	-100.0%	-\$890,000	1	0	-100.0%	-1
LEEWARD ESTATES	\$ 355,000	\$ 458,000	29.0%	\$103,000	1	1	0.0%	0
OCEAN POINTE	\$ 467,500	\$ 528,250	13.0%	\$60,750	12	20	66.7%	8
WESTLOCH ESTATES	\$ 449,000	\$ 532,000	18.5%	\$83,000	2	3	50.0%	1
WESTLOCH FAIRWAY	\$ 557,000	\$ 509,898	-8.5%	-\$47,102	3	4	33.3%	1
Ewa Plain Region	\$ 450,000	\$ 538,000	19.6%	\$88,000	58	67	15.5%	9
Makakilo Region	2012 Median	2013 Median	+/-	+/-	2012 Sold	2013 Sold	+/-	+/-
MAKAKILO-ANUHEA	\$ 550,000	\$ 553,500	0.6%	\$3,500	1	1	0.0%	0
MAKAKILO-HIGHLANDS	\$ -	\$ 590,000	-	\$590,000	0	1	-	1
MAKAKILO-KUMULANI	\$ -	\$ 1,185,000	-	\$1,185,000	0	1	-	1
MAKAKILO-KAHIWELO	\$ 664,000	\$ 681,000	2.6%	\$17,000	1	1	0.0%	0
MAKAKILO-PALEHUA HGTS	\$ -	\$ 986,000	-	\$986,000	0	1	-	1
MAKAKILO-UPPER	\$ 480,000	\$ 490,000	2.1%	\$10,000	3	4	33.3%	1
MAKAKILO-LOWER	\$ 515,000	\$ 497,500	-3.4%	-\$17,500	1	4	300.0%	3
MAKAKILO-STARSEDGE	\$ 667,000	\$ -	-100.0%	-\$667,000	1	0	-100.0%	-1
MAKAKILO-WAI KALOI	\$ 605,000	\$ 675,000	11.6%	\$70,000	4	2	-50.0%	-2
MAKAKILO-WEST HILLS	\$ -	\$ 610,000	-	\$610,000	0	5	-	5
NANAKAI GARDENS	\$ 390,000	\$ -	-100.0%	-\$390,000	1	0	-100.0%	-1
Makakilo Region	\$ 572,000	\$ 590,000	3.1%	\$18,000	12	20	66.7%	8
North Shore Region	2012 Median	2013 Median	+/-	+/-	2012 Sold	2013 Sold	+/-	+/-
HALEIWA	-	\$ 745,000	-	-	0	2	-	2
HAUULA	-	\$ 550,000	-	-	0	3	-	3
KAWAIILOA	-	\$ 836,000	-	-	0	1	-	1
KAHUKU	\$ 587,000	\$ -	-100.0%	-\$587,000	1	0	-100.0%	-1
LAIE	\$ 415,000	\$ -	-100.0%	-\$415,000	1	0	-100.0%	-1
MALAEKAHANA	\$ 1,430,000	\$ -	-100.0%	-\$1,430,000	1	0	-100.0%	-1
PUPUEKA	\$ 848,000	\$ 815,000	-3.9%	-\$33,000	2	1	-50.0%	-1
SUNSET AREA	\$ 1,600,000	\$ -	-100.0%	-\$1,600,000	1	0	-100.0%	-1
WAIALUA	\$ 707,500	\$ 675,000	-4.6%	-\$32,500	3	7	133.3%	4
North Shore Region	\$ 790,000	\$ 745,000	-5.7%	-\$45,000	9	14	55.6%	5

Single Family Solds - August 2013 vs 2012 (Based on region and neighborhood groupings as listed in MLS) - Page 3 of 4

Kailua Region	2012 Median	2013 Median	+/-	+/-	2012 Sold	2013 Sold	+/-	+/-
AIKAHI PARK	\$ 750,000		-100.0%	-\$750,000	1	0	-100.0%	-1
BEACHSIDE	\$ 1,615,000	\$ 1,897,500	17.5%	\$282,500	1	2	100.0%	1
COCONUT GROVE	\$ 565,000	\$ 761,000	34.7%	\$196,000	3	6	100.0%	3
ENCHANTED LAKE	\$ 762,000	\$ 940,000	23.4%	\$178,000	6	3	-50.0%	-3
GOVT/AG	\$ -	\$ 1,650,000	-	\$1,650,000	0	1	-	1
HILLCREST	\$ 1,040,000	\$ -	-100.0%	-\$1,040,000	1	0	-100.0%	-1
KAIMALINO	\$ 1,000,000	\$ -	-100.0%	-\$1,000,000	2	0	-100.0%	-2
KALAEHO HILLSIDE	\$ 1,100,000	\$ 867,500	-21.1%	-\$232,500	3	2	-33.3%	-1
KAOPA	\$ 670,000	\$ 809,000	20.7%	\$139,000	1	2	100.0%	1
KAWAIILOA	\$ -	\$ 1,450,000	-	\$1,450,000	0	1	-	1
KEOLU HILLS	\$ 650,000	\$ 725,000	11.5%	\$75,000	3	3	0.0%	0
KOOLAUPOKU	\$ -	\$ 963,350	-	\$963,350	0	1	-	1
KUULEI TRACT	\$ -	\$ 1,650,000	-	\$1,650,000	0	2	-	2
KUKILAKILA	\$ -	\$ 705,000	-	\$705,000	0	1	-	1
LANIKAI	\$ 1,775,000	\$ 3,200,000	80.3%	\$1,425,000	1	1	0.0%	0
MAUNAWILI	\$ 797,500	\$ 995,000	24.8%	\$197,500	2	3	50.0%	1
OLOMANA	\$ 715,000	\$ -	-100.0%	-\$715,000	1	0	-100.0%	-1
WAIMANALO	\$ 603,963	\$ 365,000	-39.6%	-\$238,963	4	1	-75.0%	-3
Kailua Region	\$ 775,000	\$ 890,000	14.8%	\$115,000	29	29	0.0%	0
Kaneohe Region	2012 Median	2013 Median	+/-	+/-	2012 Sold	2013 Sold	+/-	+/-
AHUIMANU AREA	\$ 652,500	\$ 675,000	3.4%	\$22,500	2	1	-50.0%	-1
AHUIMANU HILLS	\$ -	\$ 825,000	-	\$825,000	0	1	-	1
ALII SHORES	\$ 850,000	\$ 1,175,000	38.2%	\$325,000	1	1	0.0%	0
CASTLE HILL	\$ -	\$ 700,000	-	\$700,000	0	1	-	1
CLUB VIEW ESTATES	\$ 569,000	\$ 520,000	-8.6%	-\$49,000	1	1	0.0%	0
HAIKU KNOLLS	\$ 662,750	\$ -	-100.0%	-\$662,750	2	0	-100.0%	-2
HALE KOU	\$ 716,000	\$ 728,000	1.7%	\$12,000	1	1	0.0%	0
HAIKU PLANTATION	\$ 1,352,500	\$ -	-100.0%	-\$1,352,500	1	0	-100.0%	-1
HAIKU PARK	\$ -	\$ 895,000	-	\$895,000	0	1	-	1
HAIKU VILLAGE	\$ 530,000	\$ 674,500	27.3%	\$144,500	1	2	100.0%	1
HALEKAUWILA	\$ 790,000	\$ 670,500	-15.1%	-\$119,500	1	2	100.0%	1
HAUULA	\$ 670,500	\$ 462,000	-31.1%	-\$208,500	2	1	-50.0%	-1
KAAAWA	\$ 757,500	\$ -	-100.0%	-\$757,500	1	0	-100.0%	-1
KAALAE	\$ 775,000	\$ 500,000	-35.5%	-\$275,000	1	1	0.0%	0
KANEOHE BAY	\$ 715,000	\$ -	-100.0%	-\$715,000	1	0	-100.0%	-1
KAM HWY MAKAI	\$ -	\$ 565,000	-	\$565,000	0	1	-	1
KEAAHALA	\$ -	\$ 655,000	-	\$655,000	0	3	-	3
KEAPUKA	\$ 599,500	\$ -	-100.0%	-\$599,500	2	0	-100.0%	-2
KOKOKAHI	\$ -	\$ 405,000	-	\$405,000	0	1	-	1
LULANI OCEAN	\$ -	\$ 880,000	-	\$880,000	0	3	-	3
MAHALANI	\$ 785,000	\$ 960,000	22.3%	\$175,000	1	1	0.0%	0
MAHINUI	\$ -	\$ 1,135,000	-	\$1,135,000	0	2	-	2
MIKIOLA	\$ -	\$ 650,000	-	\$650,000	0	1	-	1
NOHANANI TRACT	\$ -	\$ 935,000	-	\$935,000	0	1	-	1
PARKWAY	\$ 575,000	\$ -	-100.0%	-\$575,000	1	0	-100.0%	-1
PIKOILOA	\$ 437,000	\$ 585,000	33.9%	\$148,000	3	1	-66.7%	-2
PUNALUU	\$ 530,000	\$ 685,000	29.2%	\$155,000	3	1	-66.7%	-2
WAIHEE	\$ -	\$ 975,000	-	\$975,000	0	1	-	1
WOODRIDGE	\$ 450,000	\$ 528,000	17.3%	\$78,000	1	2	100.0%	1
Kaneohe Region	\$ 655,250	\$ 685,000	4.5%	\$29,750	26	31	19.2%	5

Single Family Solds - August 2013 vs 2012 (Based on region and neighborhood groupings as listed in MLS) - Page 4 of 4

Pearl City Region	2012 Median	2013 Median	+/-	+/-	2012 Sold	2013 Sold	+/-	+/-
AIEA AREA	\$ 565,000	\$ -	-100.0%	-\$565,000	1	0	-100.0%	-1
AIEA HEIGHTS	\$ 625,000	\$ 706,000	13.0%	\$81,000	3	8	166.7%	5
FOSTER VILLAGE	\$ -	\$ 589,000	-	\$589,000	0	1	-	1
HALAWA	\$ 505,000	\$ -	-100.0%	-\$505,000	2	0	-100.0%	-2
HALAWA HEIGHTS	\$ -	\$ 675,000	-	\$675,000	0	1	-	1
MOMILANI	\$ -	\$ 450,000	-	\$450,000	0	1	-	1
NEWTOWN	\$ 649,950	\$ 765,000	17.7%	\$115,050	2	2	0.0%	0
PACIFIC PALISADES	\$ 519,700	\$ 549,000	5.6%	\$29,300	1	1	0.0%	0
PEARL CITY-UPPER	\$ 520,000	\$ 564,000	8.5%	\$44,000	3	6	100.0%	3
PEARLRIDGE	\$ -	\$ 1,090,000	-	\$1,090,000	0	1	-	1
WAI'AU	\$ -	\$ 645,000	-	\$645,000	0	1	-	1
WAILUNA	\$ 615,000	\$ 649,500	5.6%	\$34,500	1	4	300.0%	3
WAIMALU	\$ 690,000	\$ -	-100.0%	-\$690,000	1	0	-100.0%	-1
Pearl City Region	\$ 555,000	\$ 649,500	17.0%	\$94,500	14	26	85.7%	12

Metro Region	2012 Median	2013 Median	+/-	+/-	2012 Sold	2013 Sold	+/-	+/-
ALEWA HEIGHTS	\$ 700,000	\$ 940,000	34.3%	\$240,000	1	3	200.0%	2
ALIAMANU	\$ 823,000	\$ 635,000	-22.8%	-\$188,000	1	1	0.0%	0
DOWSETT	\$ 1,025,000	\$ 1,015,000	-1.0%	-\$10,000	2	1	-50.0%	-1
KALIHI-LOWER	\$ 350,000	\$ 613,000	75.1%	\$263,000	1	4	300.0%	3
KALIHI UKA	\$ -	\$ 720,000	-	\$720,000	0	1	-	1
KALIHI-UPPER	\$ 560,000	\$ 625,000	11.6%	\$65,000	1	3	200.0%	2
KALIHI VALLEY	\$ 648,100	\$ -	-100.0%	-\$648,100	2	0	-100.0%	-2
KAM HEIGHTS	\$ 585,000	\$ 532,500	-9.0%	-\$52,500	1	3	200.0%	2
KAPAHULU	\$ -	\$ 860,000	-	\$860,000	0	1	-	1
KAPALAMA	\$ -	\$ 575,000	-	\$575,000	0	3	-	3
LILIHA	\$ -	\$ 1,260,000	-	\$1,260,000	0	1	-	1
MAKIKI AREA	\$ 725,000	\$ 850,000	17.2%	\$125,000	1	1	0.0%	0
MAKIKI HEIGHTS	\$ -	\$ 1,219,000	-	\$1,219,000	0	2	-	2
MANOA AREA	\$ 965,500	\$ 1,127,500	16.8%	\$162,000	2	4	100.0%	2
MANOA-WOODLAWN	\$ 950,000	\$ -	-100.0%	-\$950,000	2	0	-100.0%	-2
MANOA LOWER	\$ -	\$ 1,100,000	-	\$1,100,000	0	1	-	1
MOANALUA GARDENS	\$ 745,500	\$ 840,000	12.7%	\$94,500	2	3	50.0%	1
MOANALUA VALLEY	\$ -	\$ 737,000	-	\$737,000	0	1	-	1
MOILIILI	\$ 957,500	\$ 595,000	-37.9%	-\$362,500	2	1	-50.0%	-1
NUUANU AREA	\$ 628,000	\$ 930,000	48.1%	\$302,000	3	1	-66.7%	-2
PACIFIC HEIGHTS	\$ 804,000	\$ -	-100.0%	-\$804,000	1	0	-100.0%	-1
PUUNUI	\$ -	\$ 889,000	-	\$889,000	0	2	-	2
PAUOA VALLEY	\$ -	\$ 750,000	-	\$750,000	0	1	-	1
PUNCHBOWL AREA	\$ -	\$ 717,500	-	\$717,500	0	2	-	2
SALT LAKE	\$ 732,750	\$ 1,150,000	56.9%	\$417,250	2	1	-50.0%	-1
UALAKAA	\$ -	\$ 2,650,000	-	\$2,650,000	0	1	-	1
UNIVERSITY	\$ -	\$ 1,350,000	-	\$1,350,000	0	1	-	1
WAIKIKI	\$ -	\$ 131,000	-	\$131,000	0	1	-	1
Metro Region	\$ 742,500	\$ 782,000	5.3%	\$39,500	24	44	83.3%	20

Waipahu Region	2012 Median	2013 Median	+/-	+/-	2012 Sold	2013 Sold	+/-	+/-
CRESTVIEW	\$ -	\$ 480,000	-	\$480,000	0	1	-	1
HARBOR VIEW	\$ -	\$ 445,000	-	\$445,000	0	1	-	1
ROBINSON HEIGHTS	\$ -	\$ 495,000	-	\$495,000	0	1	-	1
ROYAL KUNIA	\$ 512,000	\$ 565,500	10.4%	\$53,500	4	8	100.0%	4
VILLAGE PARK	\$ 442,000	\$ 500,000	13.1%	\$58,000	3	5	66.7%	2
WAIKELE	\$ 555,500	\$ 627,500	13.0%	\$72,000	2	4	100.0%	2
WAIPAHU ESTATES	\$ 609,000	\$ 655,000	7.6%	\$46,000	1	1	0.0%	0
WAIPAHU TRIANGLE	\$ 505,000	\$ -	-100.0%	-\$505,000	3	0	-100.0%	-3
WAIPAHU-LOWER	\$ 380,000	\$ 585,000	53.9%	\$205,000	2	3	50.0%	1
WAIPIO GENTRY	\$ 435,000	\$ 527,500	21.3%	\$92,500	1	2	100.0%	1
Waipahu Region	\$ 468,000	\$ 545,000	16.5%	\$77,000	16	26	62.5%	10

Condo Solds - August 2013 vs 2012 (Based on region and neighborhood groupings as listed in MLS) - Page 1 of 3

Central Region	2012 Median	2013 Median	+/-	+/-	2012 Sold	2013 Sold	+/-	+/-
KALIHI-LOWER	\$ -	\$ 218,000	-	\$218,000	0	1	-	1
LAUNANI VALLEY	\$ -	\$ 242,500	-	\$242,500	0	2	-	2
MILILANI AREA	\$ 299,000	\$ 236,000	-21.1%	-\$63,000	13	8	-38.5%	-5
MILILANI MAUKA	\$ 335,000	\$ 331,000	-1.2%	-\$4,000	17	12	-29.4%	-5
WAIHIAWA HEIGHTS	\$ 75,000	\$ 161,000	114.7%	\$86,000	1	1	0.0%	0
WHITMORE VILLAGE	\$ 96,000	\$ -	-100.0%	-\$96,000	1	0	-100.0%	-1
WILIKINA	\$ 119,500	\$ -	-100.0%	-\$119,500	1	0	-100.0%	-1
WAIPIO ACRES/WAIKALANI WOOD	\$ 128,000	\$ 156,450	22.2%	\$28,450	6	4	-33.3%	-2
Central Region	\$ 300,000	\$ 240,000	-20.0%	-\$60,000	39	28	-28.2%	-11
Diamond Hd Region	2012 Median	2013 Median	+/-	+/-	2012 Sold	2013 Sold	+/-	+/-
DIAMOND HEAD	\$ 530,000	\$ 500,000	-5.7%	-\$30,000	5	8	60.0%	3
KULIOUOU	\$ -	\$ 630,000	-	\$630,000	0	1	-	1
PAIKO LAGOON	\$ -	\$ 580,000	-	\$580,000	0	1	-	1
ST. LOUIS	\$ 495,000	\$ 548,000	10.7%	\$53,000	1	1	0.0%	0
WAIALAE G/C	\$ 115,000	\$ 380,000	230.4%	\$265,000	1	2	100.0%	1
WAIALAE NUI VLY	\$ -	\$ 459,000	-	\$459,000	0	1	-	1
Diamond Hd Region	\$ 499,000	\$ 561,500	12.5%	\$62,500	7	14	100.0%	7
Ewa Plain Region	2012 Median	2013 Median	+/-	+/-	2012 Sold	2013 Sold	+/-	+/-
AG/INDL/NAVY	\$ 155,000	\$ -	-100.0%	-\$155,000	1	0	-100.0%	-1
EWA	\$ 229,000	\$ 253,000	10.5%	\$24,000	5	5	0.0%	0
EWA GEN	\$ 236,500	\$ 263,500	11.4%	\$27,000	1	2	100.0%	1
EWA BEACH	\$ 165,000	\$ 185,000	12.1%	\$20,000	2	1	-50.0%	-1
EWA GEN SODA CREEK	\$ 232,700	\$ 250,000	7.4%	\$17,300	2	4	100.0%	2
EWA GEN SUN TERRA ON THE PARK	\$ 215,000	\$ 247,000	14.9%	\$32,000	1	1	0.0%	0
HOAKALEI-KA MAKANA	\$ 428,345	\$ -	-100.0%	-\$428,345	2	0	-100.0%	-2
KAPOLEI	\$ 311,704	\$ 287,500	-7.8%	-\$24,204	4	8	100.0%	4
KAPOLEI-MALANAI	\$ -	\$ 243,250	-	\$243,250	0	2	-	2
KO OLINA	\$ 475,000	\$ 614,500	29.4%	\$139,500	1	10	900.0%	9
OCEAN POINTE	\$ 332,500	\$ 386,000	16.1%	\$53,500	8	8	0.0%	0
WESTLOCH FAIRWAY	\$ -	\$ 303,500	-	\$303,500	0	1	-	1
Ewa Plain Region	\$ 293,000	\$ 315,000	7.5%	\$22,000	27	42	55.6%	15
Hawaii Kai Region	2012 Median	2013 Median	+/-	+/-	2012 Sold	2013 Sold	+/-	+/-
HAAHIONE-LOWER	\$ 495,500	\$ 521,250	5.2%	\$25,750	2	8	300.0%	6
KALAMA VALLEY	\$ 555,000	\$ 590,000	6.3%	\$35,000	1	1	0.0%	0
MARINERS VALLEY	\$ 523,000	\$ 565,000	8.0%	\$42,000	1	1	0.0%	0
WEST MARINA	\$ 550,000	\$ 673,750	22.5%	\$123,750	11	14	27.3%	3
Hawaii Kai Region	\$ 550,000	\$ 589,500	7.2%	\$39,500	15	24	60.0%	9
Kailua Region	2012 Median	2013 Median	+/-	+/-	2012 Sold	2013 Sold	+/-	+/-
AIKAHI PARK	\$ 415,000	\$ 450,000	8.4%	\$35,000	3	1	-66.7%	-2
BLUESTONE	\$ 825,000	\$ 900,000	9.1%	\$75,000	1	3	200.0%	2
KAWAILOA	\$ -	\$ 810,000	-	\$810,000	0	1	-	1
KAILUA TOWN	\$ 375,000	\$ 468,888	25.0%	\$93,888	9	11	22.2%	2
WAIMANALO	\$ 337,000	\$ -	-100.0%	-\$337,000	1	0	-100.0%	-1
KUKILAKILA	\$ 620,000	\$ 620,000	0.0%	\$0	3	4	33.3%	1
Kailua Region	\$ 391,000	\$ 527,500	34.9%	\$136,500	17	20	17.6%	3
Leeward Region	2012 Median	2013 Median	+/-	+/-	2012 Sold	2013 Sold	+/-	+/-
MAILI	\$ -	\$ 91,000	-	\$91,000	0	2	-	2
MAKAHA	\$ 85,000	\$ 112,000	31.8%	\$27,000	3	7	133.3%	4
WAIANAE	\$ -	\$ 57,000	-	\$57,000	0	3	-	3
Leeward Region	\$ 85,000	\$ 107,500	26.5%	\$22,500	3	12	300.0%	9

Condo Solds - August 2013 vs 2012 (Based on region and neighborhood groupings as listed in MLS) - Page 2 of 3

Kaneohe Region	2012 Median	2013 Median	+/-	+/-	2012 Sold	2013 Sold	+/-	+/-
COUNTRY CLUB	\$ 515,000	\$ 579,000	12.4%	\$64,000	5	1	-80.0%	-4
HAIKU PLANTATION	\$ 435,000	\$ 460,000	5.7%	\$25,000	1	1	0.0%	0
HAIKU VILLAGE	\$ 464,750	\$ 460,000	-1.0%	-\$4,750	1	1	0.0%	0
HALE KOU	\$ 240,000	\$ 249,000	3.8%	\$9,000	1	1	0.0%	0
KAAAWA	\$ 230,000	\$ -	-100.0%	-\$230,000	1	0	-100.0%	-1
LILIPUNA	\$ 484,000	\$ 549,000	13.4%	\$65,000	1	3	200.0%	2
PARKWAY	\$ -	\$ 492,000	-	\$492,000	0	1	-	1
PUNALUU	\$ 60,000	\$ 130,000	116.7%	\$70,000	1	1	0.0%	0
PUUALII	\$ 382,000	\$ -	-100.0%	-\$382,000	4	0	-100.0%	-4
PUOHALA VILLAGE	\$ -	\$ 177,500	-	\$177,500	0	2	-	2
TEMPLE VALLEY	\$ 408,000	\$ 375,000	-8.1%	-\$33,000	6	7	16.7%	1
WINDWARD ESTATES	\$ 246,000	\$ 315,000	28.0%	\$69,000	6	4	-33.3%	-2
Kaneohe Region	\$ 410,000	\$ 375,000	-8.5%	-\$35,000	27	22	-18.5%	-5
Makakilo Region	2012 Median	2013 Median	+/-	+/-	2012 Sold	2013 Sold	+/-	+/-
MAKAKILO-UPPER	\$ 263,500	\$ 287,000	8.9%	\$23,500	6	8	33.3%	2
Makakilo Region	\$ 263,500	\$ 287,000	8.9%	\$23,500	6	8	33.3%	2
Metro Region	2012 Median	2013 Median	+/-	+/-	2012 Sold	2013 Sold	+/-	+/-
ALA MOANA	\$ 161,500	\$ 277,000	71.5%	\$115,500	10	11	10.0%	1
CHINATOWN	\$ 485,000	\$ 555,000	14.4%	\$70,000	3	2	-33.3%	-1
DILLINGHAM	\$ 415,000	\$ 425,000	2.4%	\$10,000	11	1	-90.9%	-10
DOWNTOWN	\$ 320,000	\$ 390,000	21.9%	\$70,000	1	9	800.0%	8
HOLIDAY MART	\$ 223,000	\$ 280,000	25.6%	\$57,000	7	6	-14.3%	-1
KAKAAKO	\$ 590,000	\$ 700,000	18.6%	\$110,000	19	27	42.1%	8
KALIHI AREA	\$ 225,000	\$ 235,000	4.4%	\$10,000	1	1	0.0%	0
KAPALAMA	\$ 220,000	\$ 180,000	-18.2%	-\$40,000	1	1	0.0%	0
KAPAHULU	\$ 395,000	\$ 280,000	-29.1%	-\$115,000	1	1	0.0%	0
KAPIO/KINAU/WARD	\$ 895,000	\$ 435,000	-51.4%	-\$460,000	3	9	200.0%	6
KAPIOLANI	\$ 434,500	\$ 415,000	-4.5%	-\$19,500	11	11	0.0%	0
KUAKINI	\$ 311,000	\$ 378,500	21.7%	\$67,500	1	2	100.0%	1
LILIHA	\$ -	\$ 312,500	-	\$312,500	0	2	-	2
MAKIKI	\$ 250,000	\$ 287,000	14.8%	\$37,000	3	1	-66.7%	-2
MAKIKI AREA	\$ 310,000	\$ 307,500	-0.8%	-\$2,500	14	20	42.9%	6
MCCULLY	\$ 285,000	\$ 200,250	-29.7%	-\$84,750	3	4	33.3%	1
MOANALUA VALLEY	\$ 220,000	\$ -	-100.0%	-\$220,000	2	0	-100.0%	-2
MANOA LOWER	\$ 220,000	\$ -	-100.0%	-\$220,000	1	0	-100.0%	-1
MOILIILI	\$ 251,000	\$ 409,900	63.3%	\$158,900	9	7	-22.2%	-2
NUUANU-LOWER	\$ 356,500	\$ 355,000	-0.4%	-\$1,500	4	3	-25.0%	-1
PALAMA	\$ 146,000	\$ -	-100.0%	-\$146,000	1	0	-100.0%	-1
PAWAA	\$ 215,000	\$ 314,000	46.0%	\$99,000	4	7	75.0%	3
PUNAHOU	\$ -	\$ 348,000	-	\$348,000	0	8	-	8
PUNCHBOWL AREA	\$ 383,500	\$ 300,000	-21.8%	-\$83,500	6	8	33.3%	2
PUNCHBOWL-LOWER	\$ 320,000	\$ 225,000	-29.7%	-\$95,000	7	5	-28.6%	-2
SALT LAKE	\$ 259,000	\$ 275,000	6.2%	\$16,000	19	17	-10.5%	-2
UNIVERSITY	\$ -	\$ 301,500	-	\$301,500	0	2	-	2
WAIKIKI	\$ 325,000	\$ 380,000	16.9%	\$55,000	77	79	2.6%	2
Metro Region	\$ 320,000	\$ 357,500	11.7%	\$37,500	219	244	11.4%	25
North Shore Region	2012 Median	2013 Median	+/-	+/-	2012 Sold	2013 Sold	+/-	+/-
KUILIMA	\$ 349,000	\$ 852,500	144.3%	\$503,500	5	4	-20.0%	-1
MOKULEIA	\$ 400,000	\$ -	-100.0%	-\$400,000	1	0	-100.0%	-1
WAIALUA	\$ -	\$ 355,000	-	\$355,000	0	2	-	2
North Shore Region	\$ 360,000	\$ 415,000	15.3%	\$55,000	6	6	0.0%	0

Condo Solds - August 2013 vs 2012 (Based on region and neighborhood groupings as listed in MLS) - Page 3 of 3

Pearl City Region	2012 Median	2013 Median	+/-	+/-	2012 Sold	2013 Sold	+/-	+/-
AIEA HEIGHTS	\$ -	\$ 485,000	-	\$485,000	0	1	-	1
HALAWA	\$ 274,500	\$ 350,000	27.5%	\$75,500	2	2	0.0%	0
MANANA	\$ 128,750	\$ 205,000	59.2%	\$76,250	2	2	0.0%	0
NEWTOWN	\$ -	\$ 448,000	-	\$448,000	0	1	-	1
PEARL CITY-LOWER	\$ 188,500	\$ -	-100.0%	-\$188,500	1	0	-100.0%	-1
PEARL CITY-UPPER	\$ 157,000	\$ -	-100.0%	-\$157,000	1	0	-100.0%	-1
PEARLRIDGE	\$ 300,000	\$ 337,000	12.3%	\$37,000	15	12	-20.0%	-3
WAI'IAU	\$ 259,000	\$ 345,000	33.2%	\$86,000	4	5	25.0%	1
WAILUNA	\$ 322,500	\$ -	-100.0%	-\$322,500	2	0	-100.0%	-2
Pearl City Region	\$ 274,000	\$ 345,000	25.9%	\$71,000	27	23	-14.8%	-4

Waipahu Region	2012 Median	2013 Median	+/-	+/-	2012 Sold	2013 Sold	+/-	+/-
ROYAL KUNIA	\$ -	\$ 240,000	-	-	0	1	-	-
WAIKELE	\$ 315,000	\$ 332,500	5.6%	\$17,500	9	6	-33.3%	-3
WAI'PAHU-LOWER	\$ 107,000	\$ 225,000	110.3%	\$118,000	2	5	150.0%	3
WAIPIO GENTRY	\$ 205,000	\$ 263,000	28.3%	\$58,000	2	5	150.0%	3
Waipahu Region	\$ 315,000	\$ 263,000	-16.5%	-\$52,000	13	17	30.8%	4