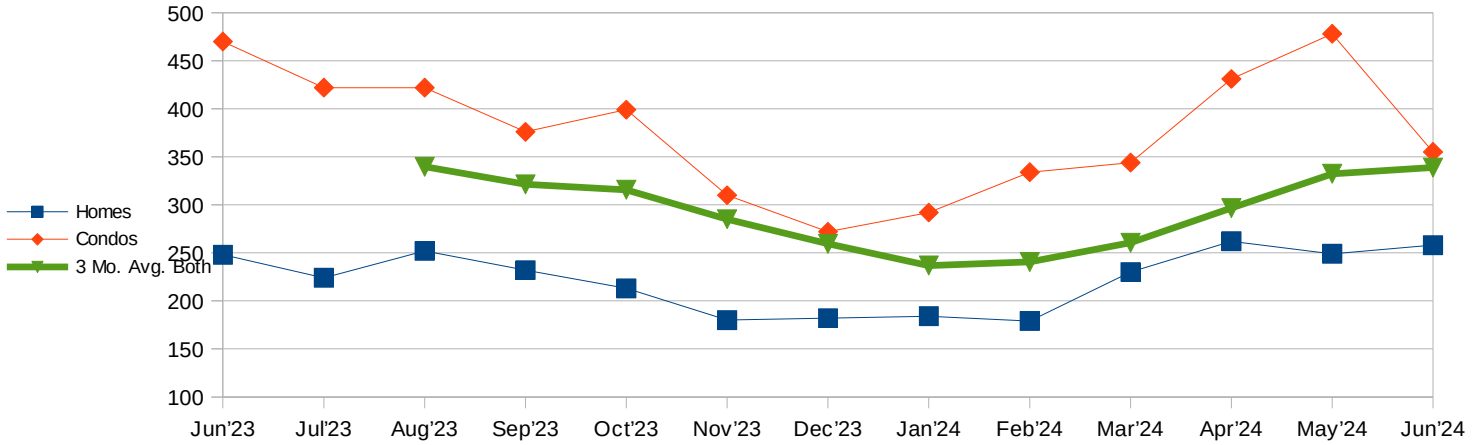
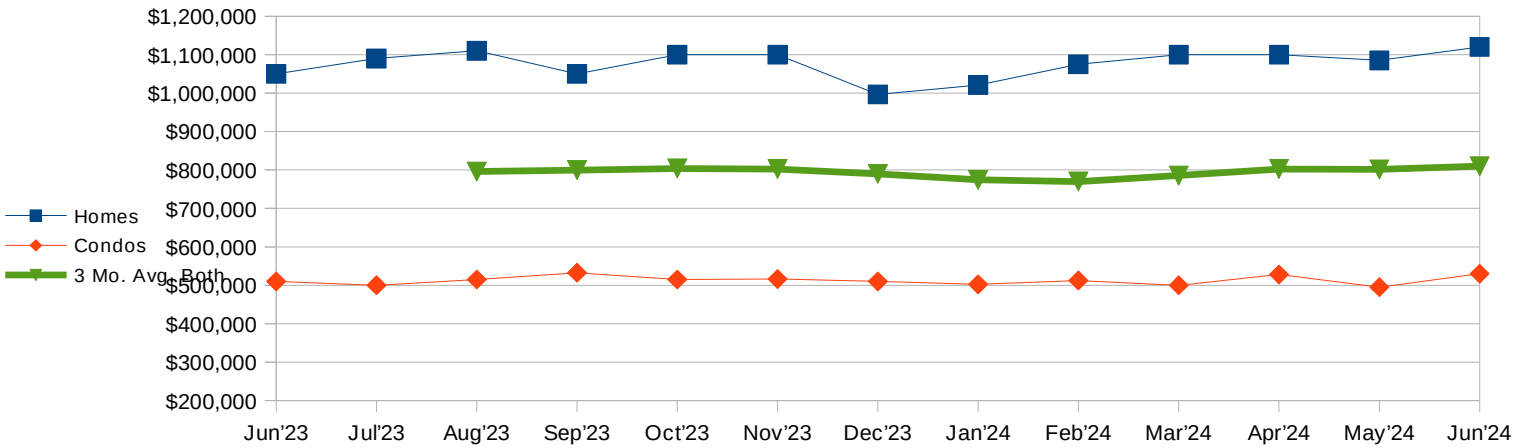


		Jun'23	Jul'23	Aug'23	Sep'23	Oct'23	Nov'23	Dec'23	Jan'24	Feb'24	Mar'24	Apr'24	May'24	Jun'24
Sales	Homes	248	224	252	232	213	180	182	184	179	230	262	249	258
	Condos	470	422	422	376	399	310	272	292	334	344	431	478	355
	3 Mo. Avg. Both			340	321	316	285	259	237	241	261	297	332	339



		Jun'23	Jul'23	Aug'23	Sep'23	Oct'23	Nov'23	Dec'23	Jan'24	Feb'24	Mar'24	Apr'24	May'24	Jun'24
Median Price	Homes	\$1,050,000	\$1,090,000	\$1,110,000	\$1,050,000	\$1,100,000	\$1,100,055	\$996,500	\$1,021,016	\$1,075,000	\$1,100,000	\$1,100,000	\$1,085,000	\$1,120,000
	Condos	\$510,000	\$500,000	\$515,000	\$532,500	\$515,000	\$516,179	\$510,000	\$502,500	\$512,500	\$500,000	\$528,000	\$495,000	\$530,000
	3 Mo. Avg. Both			\$795,833	\$799,583	\$803,750	\$802,289	\$789,622	\$774,375	\$769,586	\$785,169	\$802,583	\$801,333	\$809,667



		Jun'23	Jul'23	Aug'23	Sep'23	Oct'23	Nov'23	Dec'23	Jan'24	Feb'24	Mar'24	Apr'24	May'24	Jun'24
Inventory	Homes	605	591	598	592	626	672	600	607	599	581	618	640	607
	Condos	1,159	1,154	1,146	1,194	1,306	1,337	1,234	1,348	1,388	1,493	1,576	1,651	1,729
	3 Mo. Avg. Both			876	879	910	955	963	966	963	1003	1043	1093	1137

