

Monthly Housing Statistics September 2012



SINGLE FAMILY HOMES

Median Sales Price	
\$637,000	+11.8%
Closed Sales	
304	+7.0%
Average Sales Price	
\$768,405	+11.3%

CONDOS

Median Sales Price	
\$319,500	+0.9%
Closed Sales	
350	-3.8%
Average Sales Price	
\$375,914	+1.7%

INDEX:

Monthly Indicators	2
Closed Sales	3
Median Sales Price	4
Median Days on Market	5
New Listings	6
Pending Sales	7
Months of Inventory	8
Active Listings	9
Average Sales Price	10
% of Original Listing Price Received	11
Housing Supply Overview	12
Pending Sales (by price range)	13-14
Median Days on Market (by price range)	15-16
% of list price received (by price range)	17-18
Inventory of Homes (by price range)	19-20
Months Supply of Inventory (price range)	21-22
Historical Graphs	23-24

Monthly Indicators

September 2012

	Single Family Homes					
	Sep-12	Sep-11	%	YTD-12	YTD-11	%
Closed Sales	304	284	7.0%	2,278	2,200	3.5%
Median Sales Price	\$637,000	\$ 570,000	11.8%	\$620,000	\$ 570,000	8.8%
Median Days on Market	26	31	-16.1%	30	35	-14.3%
New Listings	344	378	-9.0%	3330	3,895	-14.5%
Pending Sales	446	326	36.8%	3515	2,391	47.0%
Months of Inventory	3.3	5.9	-44.1%	--	--	--
Active Listings	1,193	1,486	-19.7%	--	--	--
Average Sales Price	\$768,405	\$ 690,628	11.3%	\$733,990	\$ 702,307	4.5%
% of Original Listing Price Received	96.7%	95.2%	1.6%	96.2%	95.2%	1.1%

	Condos					
	Sep-12	Sep-11	%	YTD-12	YTD-11	%
Closed Sales	350	364	-3.8%	3110	3,030	2.6%
Median Sales Price	\$319,500	\$ 316,500	0.9%	\$315,000	\$ 302,500	4.1%
Median Days on Market	27	39	-30.8%	32	40	-20.0%
New Listings	482	535	-9.9%	4644	5,166	-10.1%
Pending Sales	530	396	33.8%	4341	3,265	33.0%
Months of Inventory	3.6	5.5	-34.5%	--	--	--
Active Listings	1,600	1,866	-14.3%	--	--	--
Average Sales Price	\$375,914	\$ 369,685	1.7%	\$366,790	\$ 357,669	2.6%
% of Original Listing Price Received	98.3%	94.2%	4.4%	96.9%	94.7%	2.3%

*YTD data includes revisions

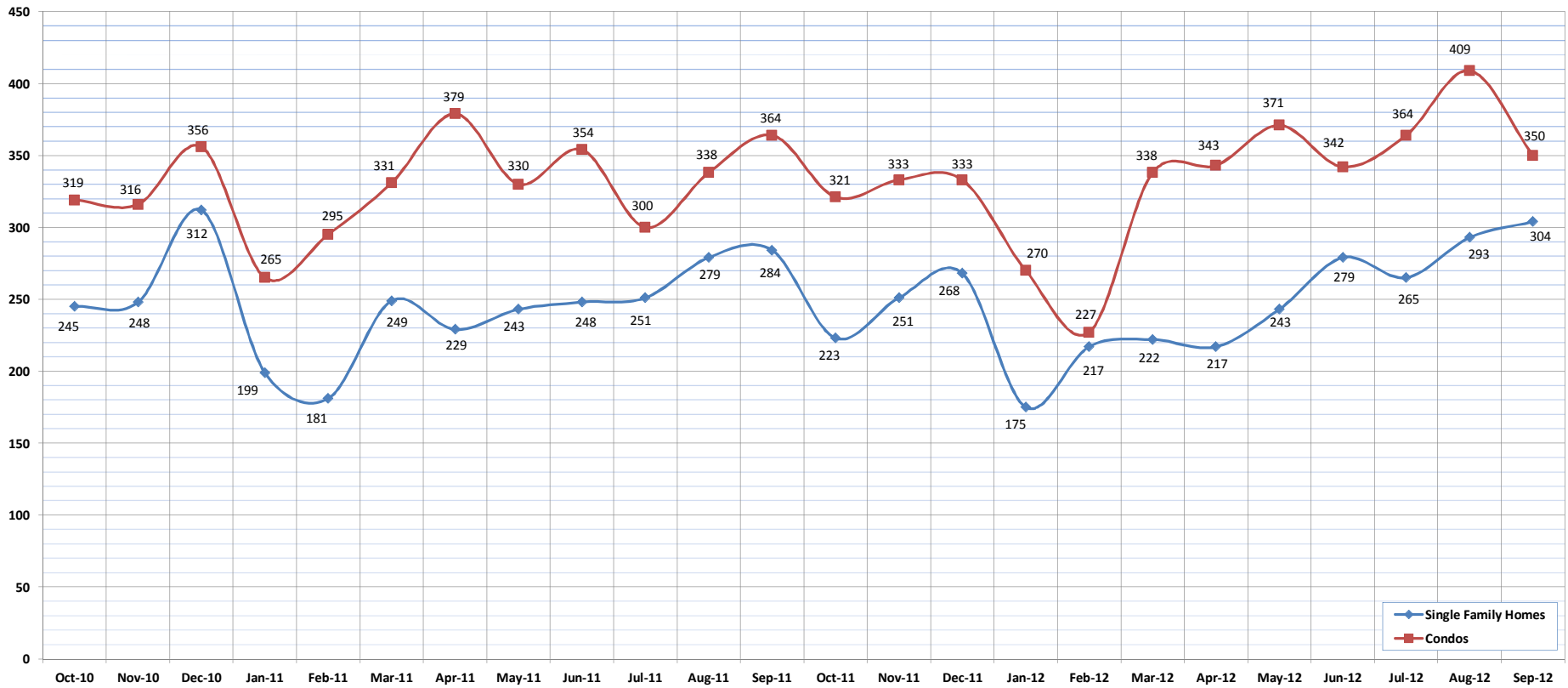
SOURCE: Honolulu Board of REALTORS®, compiled from MLS data.

Closed Sales

September-12

OAHU, HAWAII

(A count of all properties that have closed in a given month.)



	Oct-10	Nov-10	Dec-10	Jan-11	Feb-11	Mar-11	Apr-11	May-11	Jun-11	Jul-11	Aug-11	Sep-11	Oct-11	Nov-11	Dec-11	Jan-12	Feb-12	Mar-12	Apr-12	May-12	Jun-12	Jul-12	Aug-12	Sep-12
Closed Sales: Single Family Homes	245	248	312	199	181	249	229	243	248	251	279	284	223	251	268	175	217	222	217	243	279	265	293	304
Closed Sales: Condos	319	316	356	265	295	331	379	330	354	300	338	364	321	333	333	270	227	338	343	371	342	364	409	350
Closed Sales: Total	564	564	668	464	476	580	608	573	602	551	617	648	544	584	601	445	444	560	560	614	621	629	702	654

SOURCE: Honolulu Board of REALTORS®, compiled from MLS data.

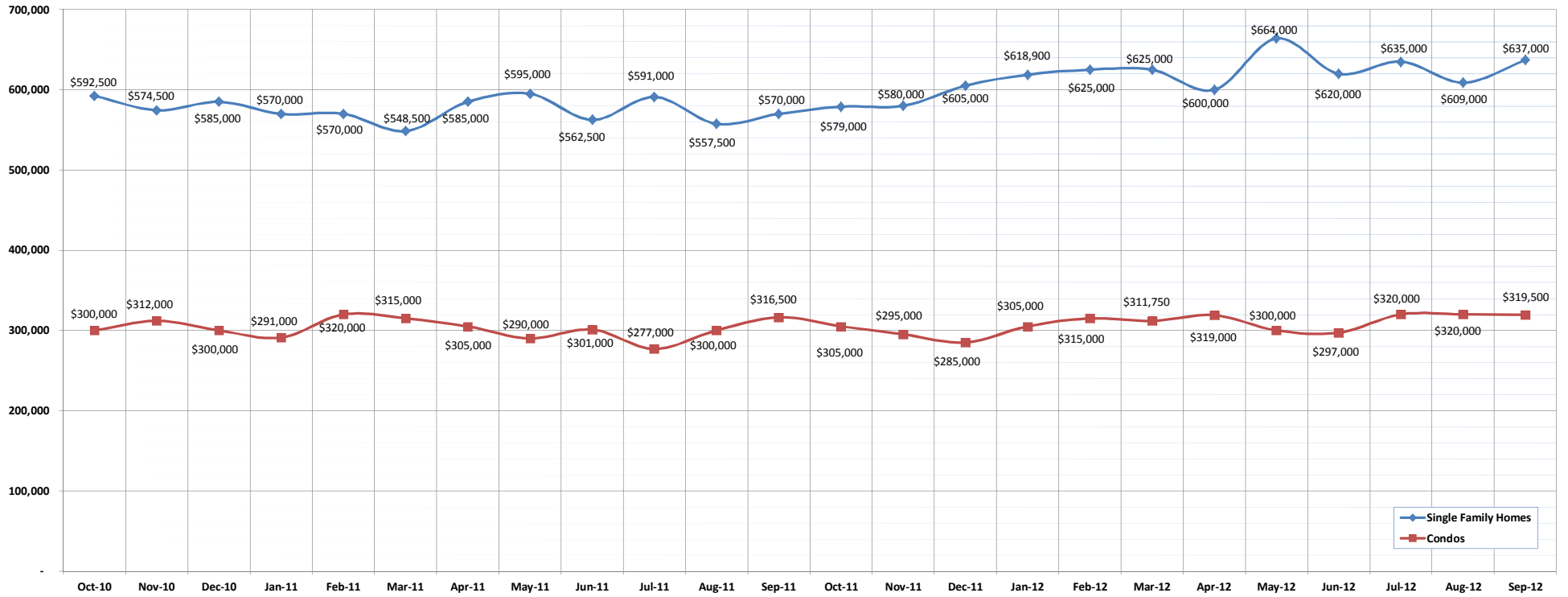


Median Sales Price

September-12

OAHU, HAWAII

(The median sales price for all closed properties in a given month.)



	Oct-10	Nov-10	Dec-10	Jan-11	Feb-11	Mar-11	Apr-11	May-11	Jun-11	Jul-11	Aug-11	Sep-11	Oct-11	Nov-11	Dec-11	Jan-12	Feb-12	Mar-12	Apr-12	May-12	Jun-12	Jul-12	Aug-12	Sep-12
Median Sales Price : SFH	592,500	574,500	585,000	570,000	570,000	548,500	585,000	595,000	562,500	591,000	557,500	570,000	579,000	580,000	605,000	618,900	625,000	625,000	600,000	664,000	620,000	635,000	609,000	637,000
Median Sales Price: Condos	300,000	312,000	300,000	291,000	320,000	315,000	305,000	290,000	301,000	277,000	300,000	316,500	305,000	295,000	285,000	305,000	315,000	311,750	319,000	300,000	297,000	320,000	320,000	319,500

SOURCE: Honolulu Board of REALTORS®, compiled from MLS data.

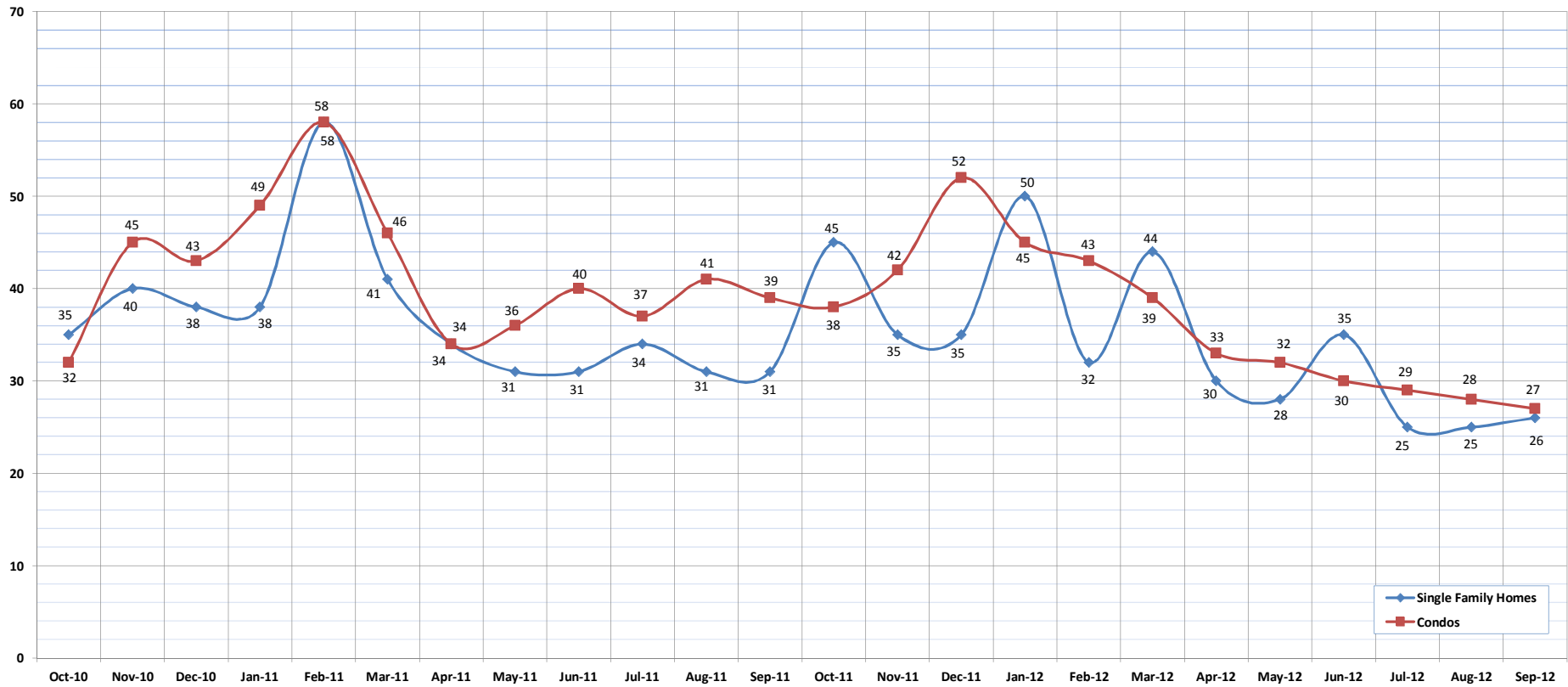


Median Days on Market

September-12

OAHU, HAWAII

(The median number of days between when a property is first listed and when an offer is accepted.)



	Oct-10	Nov-10	Dec-10	Jan-11	Feb-11	Mar-11	Apr-11	May-11	Jun-11	Jul-11	Aug-11	Sep-11	Oct-11	Nov-11	Dec-11	Jan-12	Feb-12	Mar-12	Apr-12	May-12	Jun-12	Jul-12	Aug-12	Sep-12
Median Days on Market: SFH	35	40	38	38	58	41	34	31	31	34	31	31	45	35	35	50	32	44	30	28	35	25	25	26
Median Days on Market: Condos	32	45	43	49	58	46	34	36	40	37	41	39	38	42	52	45	43	39	33	32	30	29	28	27

SOURCE: Honolulu Board of REALTORS®, compiled from MLS data.

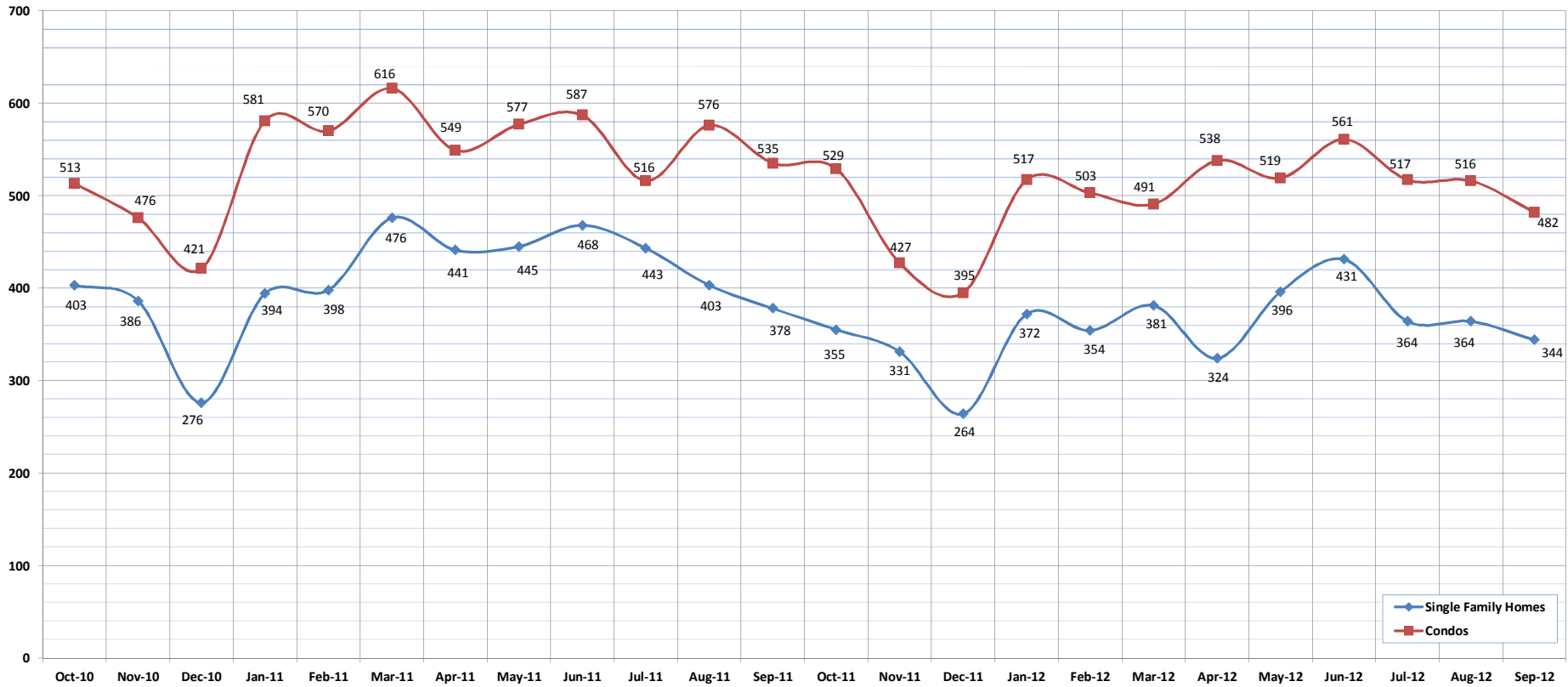


New Listings

September-12

OAHU, HAWAII

(A count of the properties that have been newly listed on the market in a given month.)



	Oct-10	Nov-10	Dec-10	Jan-11	Feb-11	Mar-11	Apr-11	May-11	Jun-11	Jul-11	Aug-11	Sep-11	Oct-11	Nov-11	Dec-11	Jan-12	Feb-12	Mar-12	Apr-12	May-12	Jun-12	Jul-12	Aug-12	Sep-12
New Listings: Single Family Homes	403	386	276	394	398	476	441	445	468	443	403	378	355	331	264	372	354	381	324	396	431	364	364	344
New Listings: Condos	513	476	421	581	570	616	549	577	587	516	576	535	529	427	395	517	503	491	538	519	561	517	516	482
New Listings: Total	916	862	697	975	968	1092	990	1022	1055	959	979	913	884	758	659	889	857	872	862	915	992	881	880	826

SOURCE: Honolulu Board of REALTORS® , compiled from MLS data.

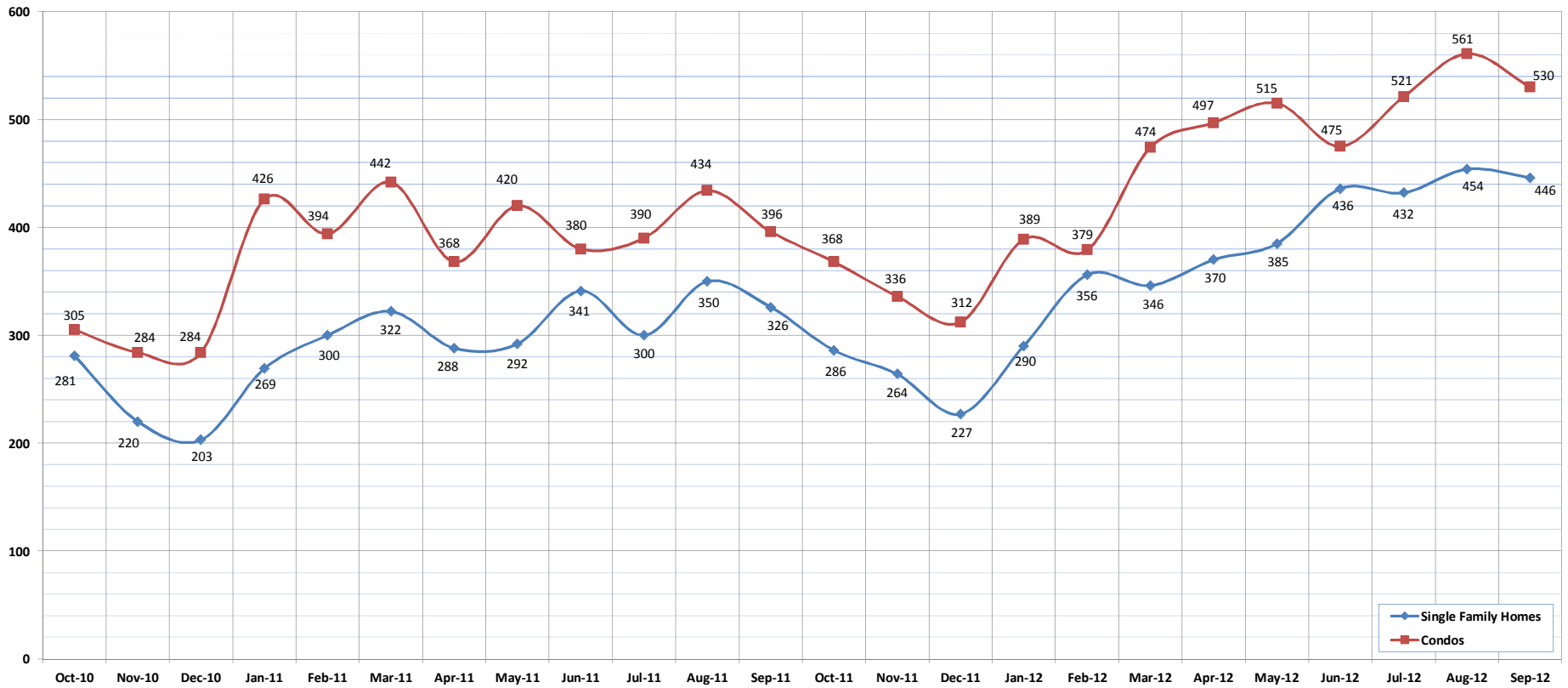


Pending Sales

September-12

OAHU, HAWAII

(A count of the properties that have offers accepted on them in a given month.)



	Oct-10	Nov-10	Dec-10	Jan-11	Feb-11	Mar-11	Apr-11	May-11	Jun-11	Jul-11	Aug-11	Sep-11	Oct-11	Nov-11	Dec-11	Jan-12	Feb-12	Mar-12	Apr-12	May-12	Jun-12	Jul-12	Aug-12	Sep-12	
Pending Sales: Single Family Homes	281	220	203	269	300	322	288	292	341	300	350	300	350	286	264	227	290	356	346	370	385	436	432	454	446
Pending Sales: Condos	305	284	284	426	394	442	368	420	380	390	434	396	368	336	312	389	379	474	497	515	475	521	561	530	
Pending Sales: Total	586	504	487	695	694	764	656	712	721	690	784	722	654	600	539	679	735	820	867	900	911	953	1015	976	

SOURCE: Honolulu Board of REALTORS®, compiled from MLS data.

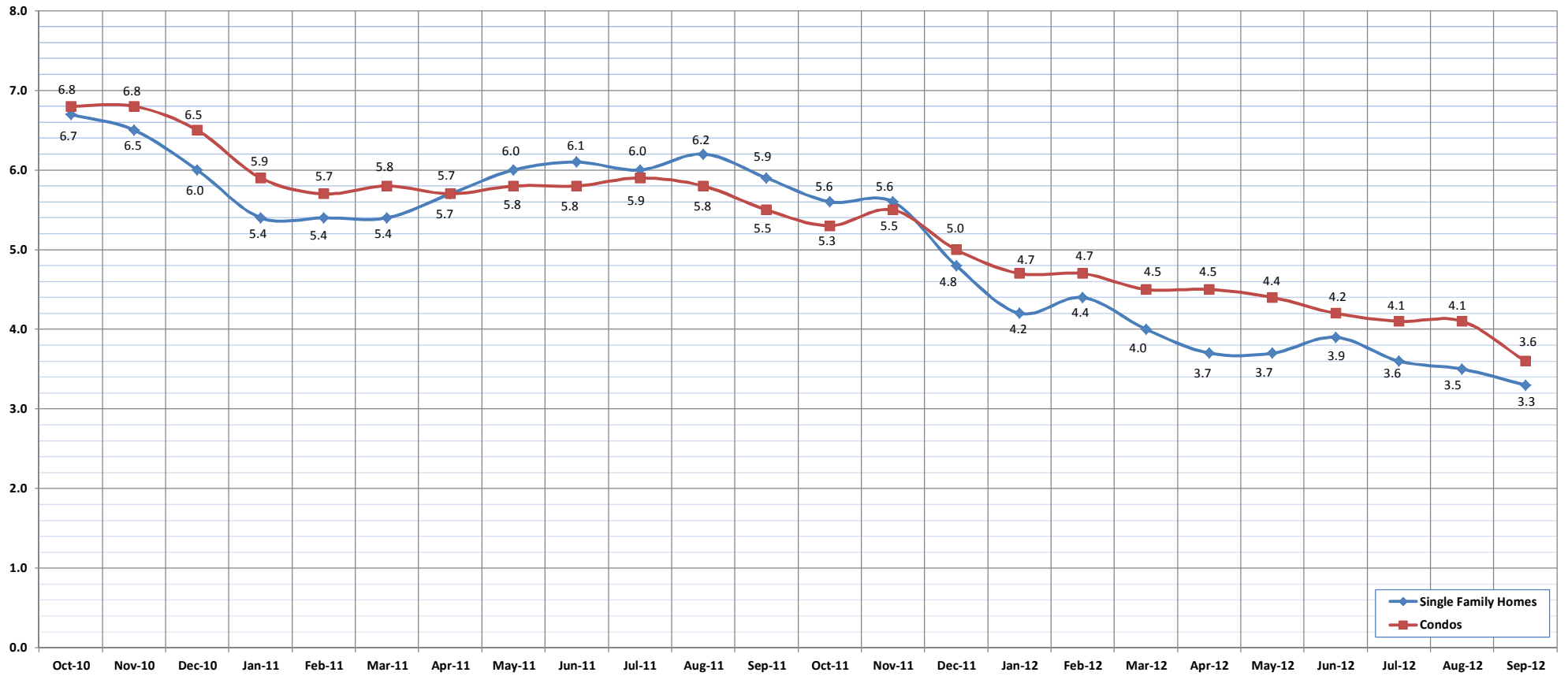


Months of Inventory

September-12

OAHU, HAWAII

(Compares the number of active listings available to the average monthly pending sales.)



	Oct-10	Nov-10	Dec-10	Jan-11	Feb-11	Mar-11	Apr-11	May-11	Jun-11	Jul-11	Aug-11	Sep-11	Oct-11	Nov-11	Dec-11	Jan-12	Feb-12	Mar-12	Apr-12	May-12	Jun-12	Jul-12	Aug-12	Sep-12
Month of Inventory : SFH	6.7	6.5	6.0	5.4	5.4	5.4	5.7	6.0	6.1	6.0	6.2	5.9	5.6	5.6	4.8	4.2	4.4	4.0	3.7	3.7	3.9	3.6	3.5	3.3
Months of Inventory: Condos	6.8	6.8	6.5	5.9	5.7	5.8	5.7	5.8	5.8	5.9	5.8	5.5	5.3	5.5	5.0	4.7	4.7	4.5	4.5	4.4	4.2	4.1	4.1	3.6

SOURCE: Honolulu Board of REALTORS®, compiled from MLS data.

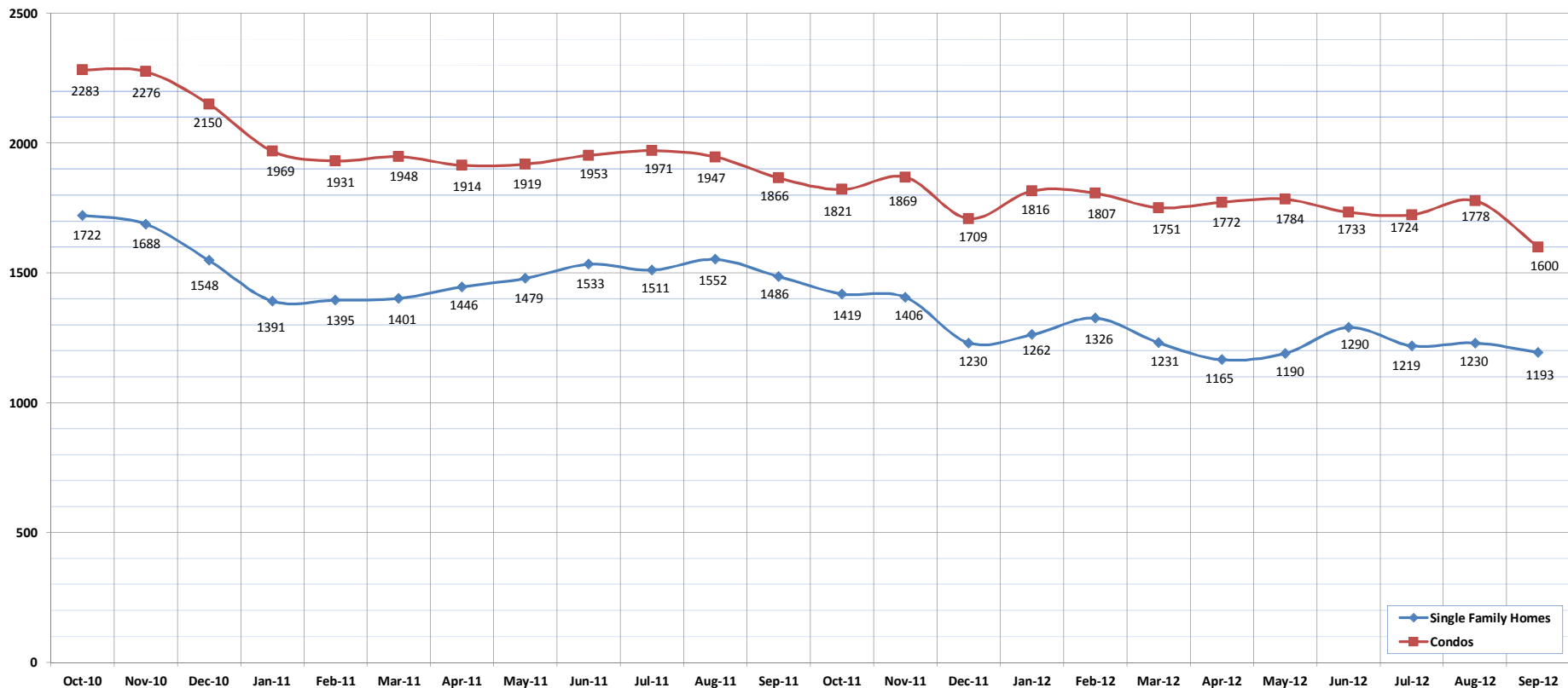


Active Listings

September-12

OAHU, HAWAII

(The number of properties available for sale in active status at the end of a given month.)



	Oct-10	Nov-10	Dec-10	Jan-11	Feb-11	Mar-11	Apr-11	May-11	Jun-11	Jul-11	Aug-11	Sep-11	Oct-11	Nov-11	Dec-11	Jan-12	Feb-12	Mar-12	Apr-12	May-12	Jun-12	Jul-12	Aug-12	Sep-12
Active Listings: Single Family Homes	1722	1688	1548	1391	1395	1401	1446	1479	1533	1511	1552	1486	1419	1406	1230	1262	1326	1231	1165	1190	1290	1219	1230	1193
Active Listings: Condos	2283	2276	2150	1969	1931	1948	1914	1919	1953	1971	1947	1866	1821	1869	1709	1816	1807	1751	1772	1784	1733	1724	1778	1600
Active Listings: Total	4005	3964	3698	3360	3326	3349	3360	3398	3486	3482	3499	3352	3240	3275	2939	3078	3133	2982	2937	2974	3023	2943	3008	2793

SOURCE: Honolulu Board of REALTORS®, compiled from MLS data.

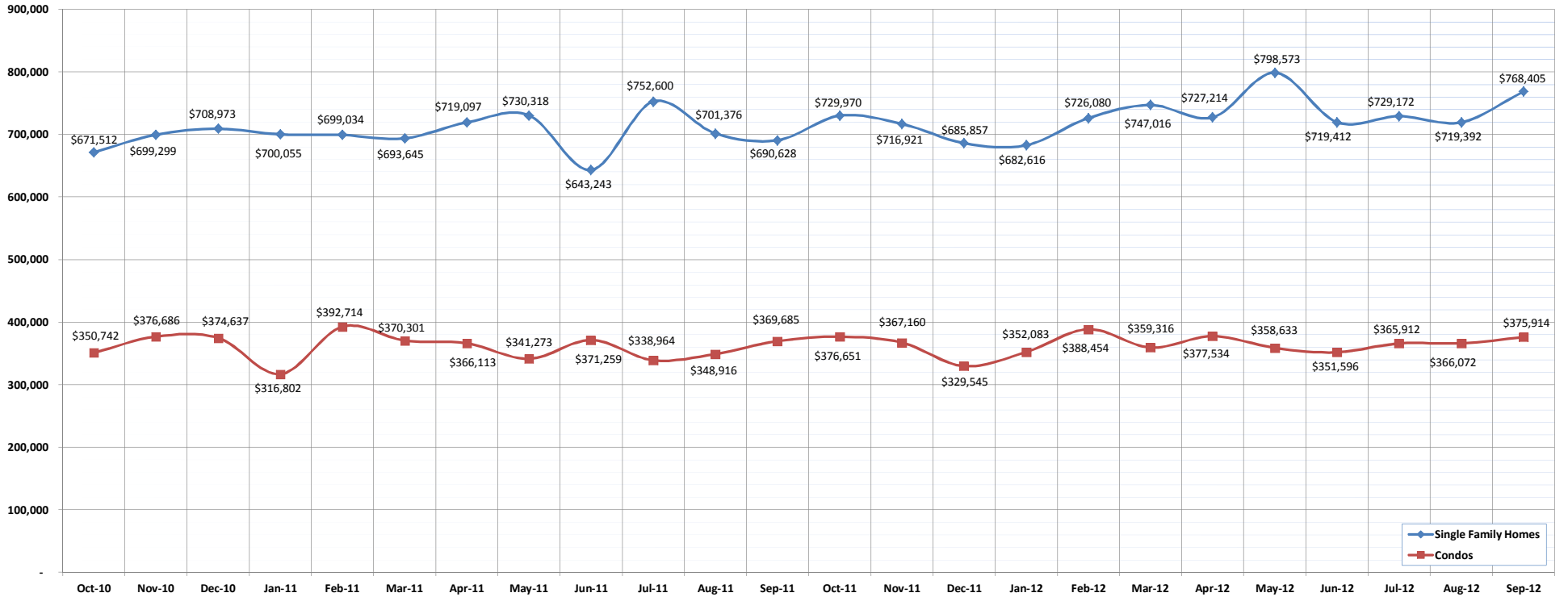


Average Sales Price

September-12

OAHU, HAWAII

(The average sales price for all closed sales in a given month.)



	Oct-10	Nov-10	Dec-10	Jan-11	Feb-11	Mar-11	Apr-11	May-11	Jun-11	Jul-11	Aug-11	Sep-11	Oct-11	Nov-11	Dec-11	Jan-12	Feb-12	Mar-12	Apr-12	May-12	Jun-12	Jul-12	Aug-12	Sep-12
Average Sales Price: SFH	671,512	699,299	708,973	700,055	699,034	693,645	719,097	730,318	643,243	752,600	701,376	690,628	729,970	716,921	685,857	682,616	726,080	747,016	727,214	798,573	719,412	729,172	719,392	768,405
Average Sales Price: Condos	350,742	376,686	374,637	316,802	392,714	370,301	366,113	341,273	371,259	338,964	348,916	369,685	376,651	367,160	329,545	352,083	388,454	359,316	377,534	358,633	351,596	365,912	366,072	375,914

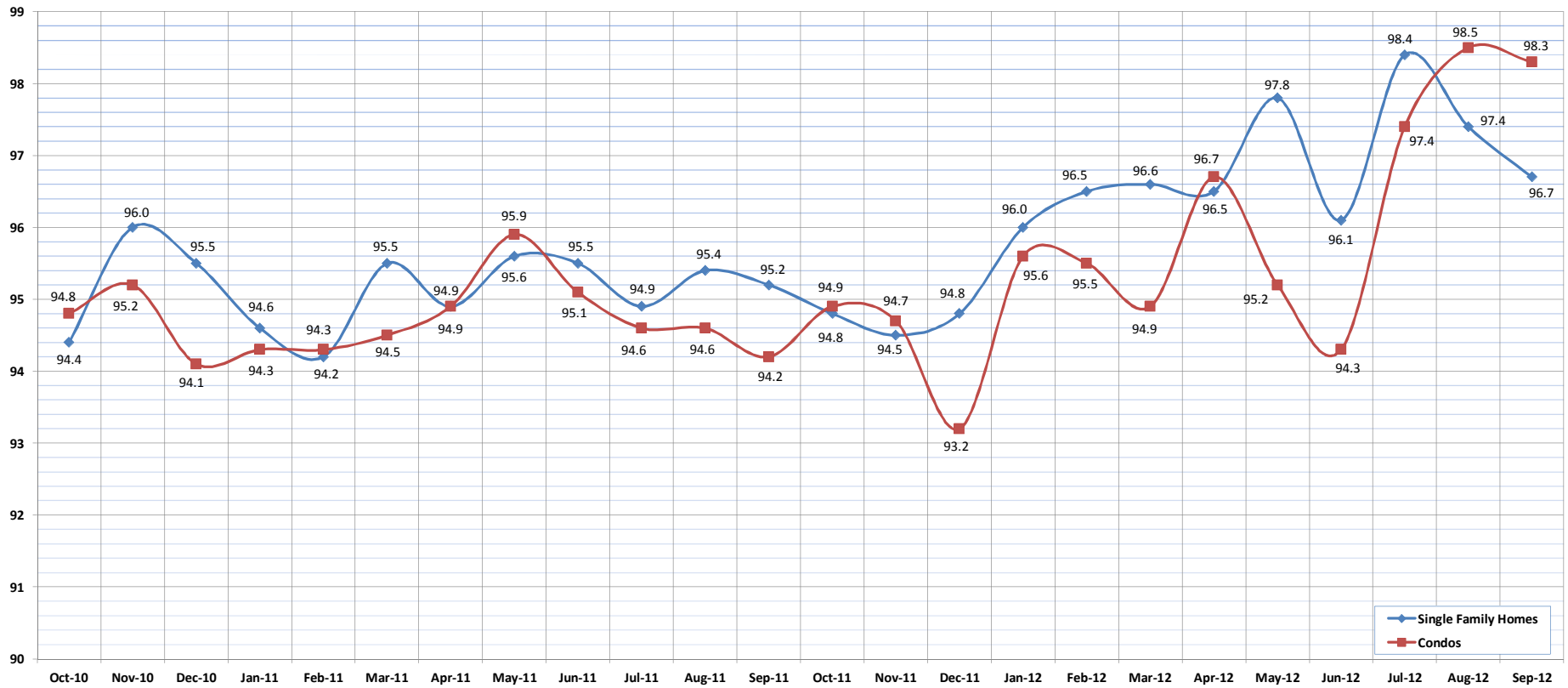
SOURCE: Honolulu Board of REALTORS® , compiled from MLS data.

Percent of Original List Price Received

September-12

OAHU, HAWAII

(The percentage found when dividing a property's sales price by the original list price.)



	Oct-10	Nov-10	Dec-10	Jan-11	Feb-11	Mar-11	Apr-11	May-11	Jun-11	Jul-11	Aug-11	Sep-11	Oct-11	Nov-11	Dec-11	Jan-12	Feb-12	Mar-12	Apr-12	May-12	Jun-12	Jul-12	Aug-12	Sep-12
Percent of Original List Price: SFH	94.4	96.0	95.5	94.6	94.2	95.5	94.9	95.6	95.5	94.9	95.4	95.2	94.8	94.5	94.8	96.0	96.5	96.6	96.5	97.8	96.1	98.4	97.4	96.7
Percent of Original List Price: Condos	94.8	95.2	94.1	94.3	94.3	94.5	94.9	95.9	95.1	94.6	94.6	94.2	94.9	94.7	93.2	95.6	95.5	94.9	96.7	95.2	94.3	97.4	98.5	98.3

SOURCE: Honolulu Board of REALTORS®, compiled from MLS data.

Housing Supply Overview

September 2012

Single Family Homes	Pending Sales			Days on Market			Percentage of Original Price Received			Inventory of Homes for Sale			Months Supply of Inventory		
	Sep-12	Sep-11	%	Sep-12	Sep-11	%	Sep-12	Sep-11	%	Sep-12	Sep-11	%	Sep-12	Sep-11	%
\$350,000 and Below	283	335	-15.5%	36	43	-16.3%	94.1%	93.5%	0.6%	76	124	-38.7%	2.9	4.5	-35.6%
\$350,001 - \$475,000	606	615	-1.5%	35	41	-14.6%	95.9%	95.7%	0.2%	155	176	-11.9%	3.1	3.5	-11.4%
\$475,001 - \$550,000	425	474	-10.3%	34	29	17.2%	96.9%	96.8%	0.1%	131	153	-14.4%	3.6	4.1	-12.2%
\$550,001 - \$650,000	521	450	15.8%	35	34	2.9%	96.0%	95.9%	0.1%	161	198	-18.7%	3.9	5.4	-27.8%
\$650,001 - \$800,000	599	501	19.6%	31	34	-8.8%	96.6%	96.4%	0.2%	189	254	-25.6%	4.3	6.4	-32.8%
\$800,001 - \$1.1M	412	355	16.1%	31	30	3.3%	94.9%	94.6%	0.3%	159	203	-21.7%	5.0	6.9	-27.5%
\$1.1M - \$1.9M	239	271	-11.8%	37	34	8.8%	93.2%	92.9%	0.3%	156	195	-20.0%	7.8	9.2	-15.2%
\$1.9M and Above	101	94	7.4%	84	82	2.4%	87.0%	86.6%	0.5%	166	183	-9.3%	21.7	23.9	-9.2%
All Single Family Homes	3186	3095	2.9%	34	35	-2.9%	95.4%	95.2%	0.2%	1193	1486	-19.7%	4.7	5.9	-20.3%

Condos	Pending Sales			Days on Market			Percentage of Original Price Received			Inventory of Homes for Sale			Months Supply of Inventory		
	Sep-12	Sep-11	%	Sep-12	Sep-11	%	Sep-12	Sep-11	%	Sep-12	Sep-11	%	Sep-12	Sep-11	%
\$150,000 and below	491	497	-1.2%	52	55	-5.5%	89.8%	89.9%	-0.1%	209	215	-2.8%	4.9	5.4	-9.3%
\$150,001 - \$200,000	407	444	-8.3%	47	50	-6.0%	93.4%	92.8%	0.6%	147	162	-9.3%	4.4	4.5	-2.2%
\$200,001 - \$250,000	621	539	15.2%	38	41	-7.3%	95.1%	94.9%	0.2%	176	190	-7.4%	3.7	4.2	-11.9%
\$250,001 - \$300,000	576	537	7.3%	36	36	0.0%	95.8%	95.8%	0.0%	179	240	-25.4%	4.0	5.4	-25.9%
\$300,001 - \$375,000	753	710	6.1%	35	37	-5.4%	96.3%	96.1%	0.2%	232	261	-11.1%	3.9	4.5	-13.3%
\$375,001 - \$475,000	658	613	7.3%	31	31	0.0%	96.6%	96.4%	0.2%	207	261	-20.7%	3.9	5.1	-23.5%
\$475,001 - \$700,000	523	491	6.5%	40	41	-2.4%	96.1%	96.2%	-0.1%	229	254	-9.8%	5.7	6.3	-9.5%
\$700,001 and above	264	311	-15.1%	44	51	-13.7%	94.3%	93.7%	0.6%	221	283	-21.9%	9.8	11.2	-12.5%
All Condos	4293	4142	3.6%	39	40	-2.5%	95.0%	94.7%	0.3%	1600	1866	-14.3%	4.7	5.5	-14.5%

SOURCE: Honolulu Board of REALTORS®, compiled from MLS data.

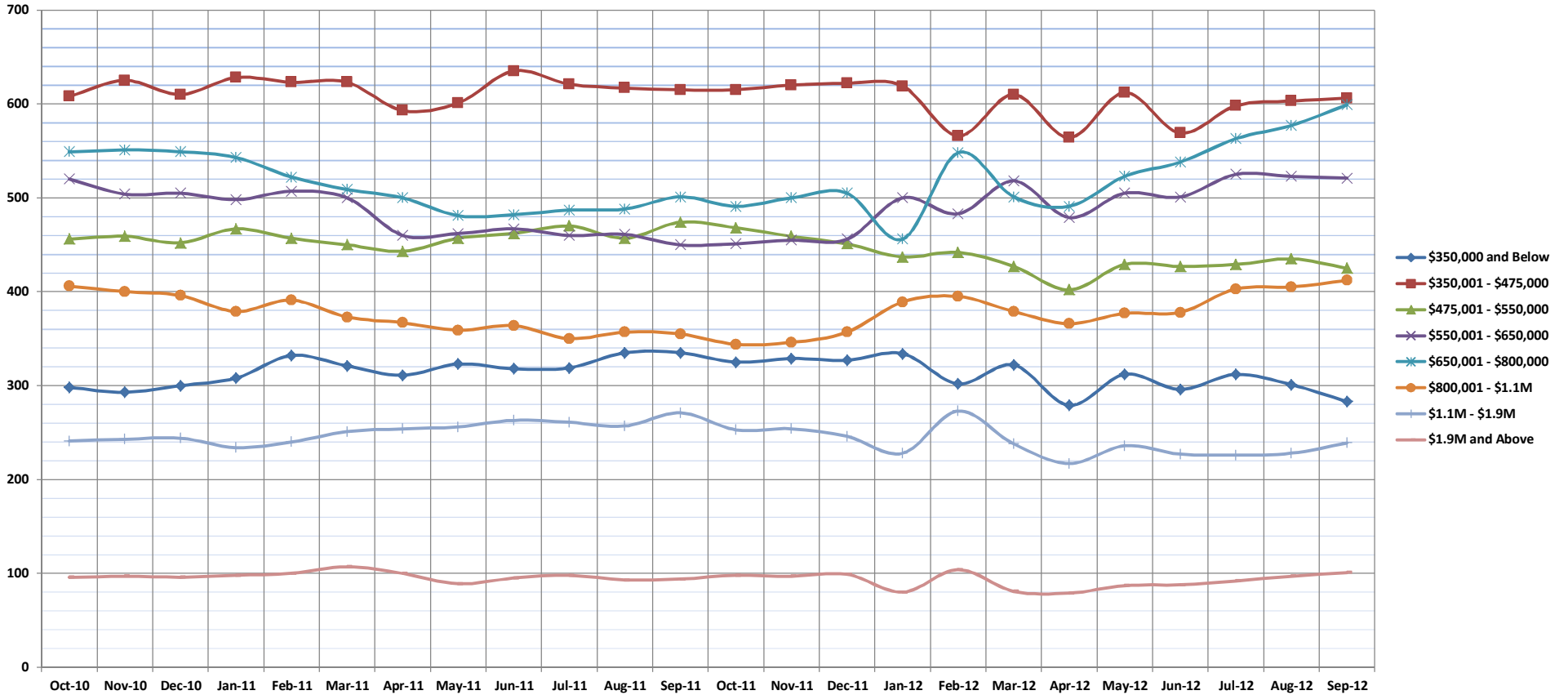


Pending Sales

Sep-12

OAHU, HAWAII: Monthly, by Price Range

(A count of properties that have offers accepted on them in a given month. Based on a 12 month rolling total.)



	Oct-10	Nov-10	Dec-10	Jan-11	Feb-11	Mar-11	Apr-11	May-11	Jun-11	Jul-11	Aug-11	Sep-11	Oct-11	Nov-11	Dec-11	Jan-12	Feb-12	Mar-12	Apr-12	May-12	Jun-12	Jul-12	Aug-12	Sep-12
\$350,000 and Below	298	293	300	308	332	321	311	323	318	319	335	335	325	329	327	334	302	322	279	312	296	312	301	283
\$350,001 - \$475,000	608	625	610	628	623	623	593	601	635	621	617	615	615	620	622	619	566	610	564	612	569	598	603	606
\$475,001 - \$550,000	456	459	452	467	457	450	443	457	462	470	457	474	468	459	451	437	442	427	402	429	427	429	435	425
\$550,001 - \$650,000	520	504	505	498	507	500	460	462	467	460	461	450	451	455	456	500	483	518	479	505	501	525	523	521
\$650,001 - \$800,000	549	551	549	543	522	509	500	481	482	487	488	501	491	500	505	456	548	501	491	523	538	563	577	599
\$800,001 - \$1.1M	406	400	396	379	391	373	367	359	364	350	357	355	344	346	357	389	395	379	366	377	378	403	405	412
\$1.1M - \$1.9M	241	243	244	234	240	251	254	256	263	261	257	271	253	254	246	228	273	238	217	236	227	226	228	239
\$1.9M and Above	96	97	96	98	100	107	100	89	95	98	93	94	98	97	99	80	104	81	79	87	88	92	97	101
All Single Family Homes	3174	3172	2152	3155	3172	3134	3028	3028	3086	3066	3065	3095	3045	3060	3063	3043	3113	3076	2877	3081	3024	3148	3169	3186

SOURCE: Honolulu Board of REALTORS®, compiled from MLS data.

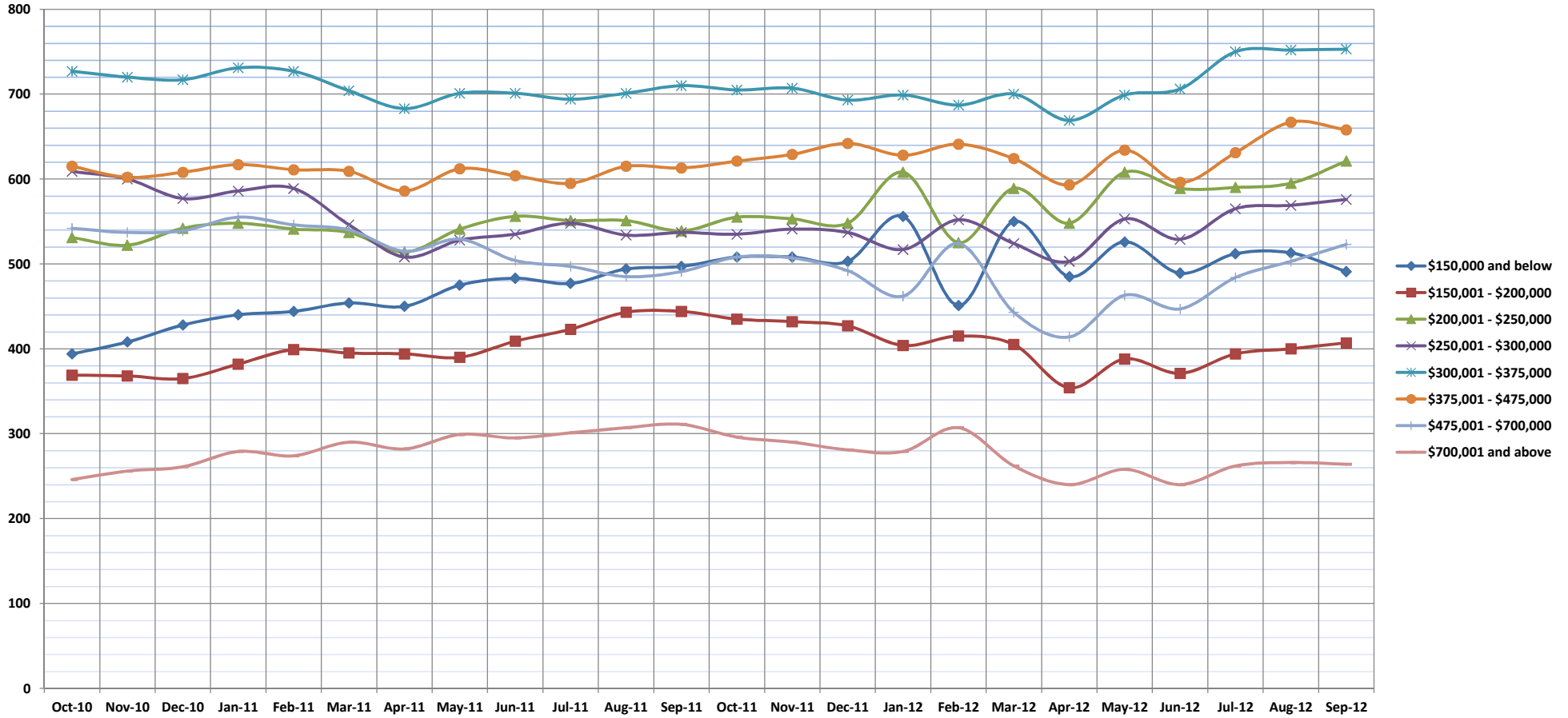


Pending Sales

Sep-12

OAHU, HAWAII: Monthly, by Price Range

(A count of properties that have offers accepted on them in a given month. Based on a 12 month rolling total.)



	Oct-10	Nov-10	Dec-10	Jan-11	Feb-11	Mar-11	Apr-11	May-11	Jun-11	Jul-11	Aug-11	Sep-11	Oct-11	Nov-11	Dec-11	Jan-12	Feb-12	Mar-12	Apr-12	May-12	Jun-12	Jul-12	Aug-12	Sep-12
\$150,000 and below	394	408	428	440	444	454	450	475	483	477	494	497	508	508	503	556	451	550	485	526	489	512	513	491
\$150,001 - \$200,000	369	368	365	382	399	395	394	390	409	423	443	444	435	432	427	404	415	405	354	388	371	394	400	407
\$200,001 - \$250,000	531	522	542	548	541	537	514	541	556	551	551	539	555	553	548	608	525	589	548	608	589	590	595	621
\$250,001 - \$300,000	609	600	577	586	589	546	508	528	535	548	534	537	535	541	537	517	552	524	503	553	529	565	569	576
\$300,001 - \$375,000	727	720	717	731	727	704	683	701	701	694	701	710	705	707	693	699	687	700	669	699	706	750	752	753
\$375,001 - \$475,000	615	602	608	617	611	609	586	612	604	595	615	613	621	629	642	628	641	624	593	634	596	631	667	658
\$475,001 - \$700,000	542	537	539	555	546	540	515	529	504	497	485	491	508	507	492	462	524	443	414	463	447	484	503	523
\$700,001 and above	246	256	261	279	274	290	282	299	295	301	307	311	296	290	281	279	307	262	240	258	240	262	266	264
All Condos	4033	4013	4037	4138	4131	4075	3932	4075	4087	4086	4130	4142	4163	4167	4123	4153	4102	4097	3806	4129	3967	4188	4265	4293

SOURCE: Honolulu Board of REALTORS®, compiled from MLS data.

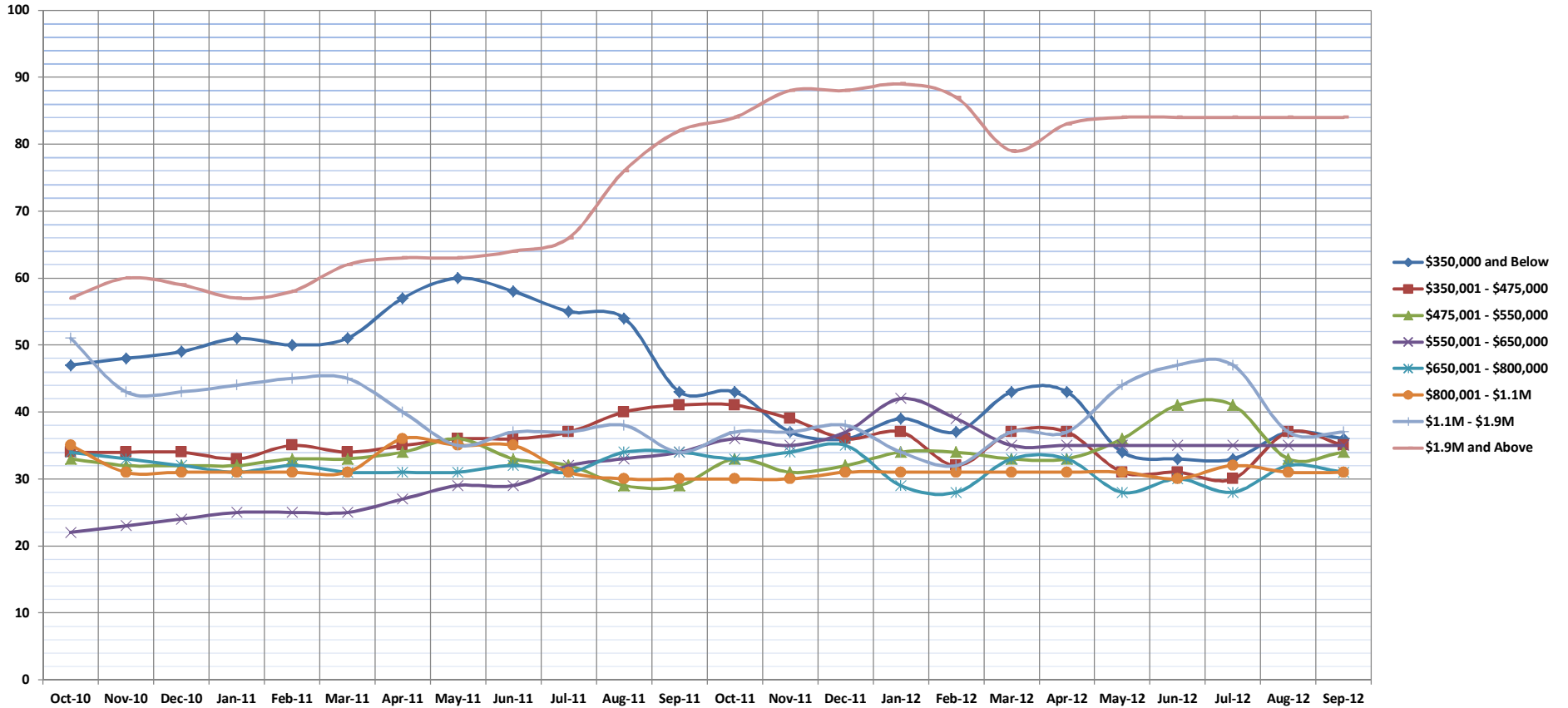


Days on Market Until Sale

Sep-12

OAHU, HAWAII: Monthly, by Price Range

(The median number of days between when a property is first listed and when an offer is accepted. Based on a 12 month rolling median.)



	Oct-10	Nov-10	Dec-10	Jan-11	Feb-11	Mar-11	Apr-11	May-11	Jun-11	Jul-11	Aug-11	Sep-11	Oct-11	Nov-11	Dec-11	Jan-12	Feb-12	Mar-12	Apr-12	May-12	Jun-12	Jul-12	Aug-12	Sep-12
\$350,000 and Below	47	48	49	51	50	51	57	60	58	55	54	43	43	37	36	39	37	43	43	34	33	33	37	36
\$350,001 - \$475,000	34	34	34	33	35	34	35	36	36	37	40	41	41	39	36	37	32	37	37	31	31	30	37	35
\$475,001 - \$550,000	33	32	32	32	33	33	34	36	33	32	29	29	33	31	32	34	34	33	33	36	41	41	33	34
\$550,001 - \$650,000	22	23	24	25	25	25	27	29	29	32	33	34	36	35	37	42	39	35	35	35	35	35	35	35
\$650,001 - \$800,000	34	33	32	31	32	31	31	31	32	31	34	34	33	34	35	29	28	33	33	28	30	28	32	31
\$800,001 - \$1.1M	35	31	31	31	31	31	36	35	35	31	30	30	30	30	31	31	31	31	31	31	30	32	31	31
\$1.1M - \$1.9M	51	43	43	44	45	45	40	35	37	37	38	34	37	37	38	34	32	37	37	44	47	47	37	37
\$1.9M and Above	57	60	59	57	58	62	63	63	64	66	76	82	84	88	88	89	87	79	83	84	84	84	84	84
All Single Family Homes	34	34	34	34	35	35	36	36	36	36	36	35	36	35	35	36	34	36	36	34	34	34	35	34

SOURCE: Honolulu Board of REALTORS®, compiled from MLS data.

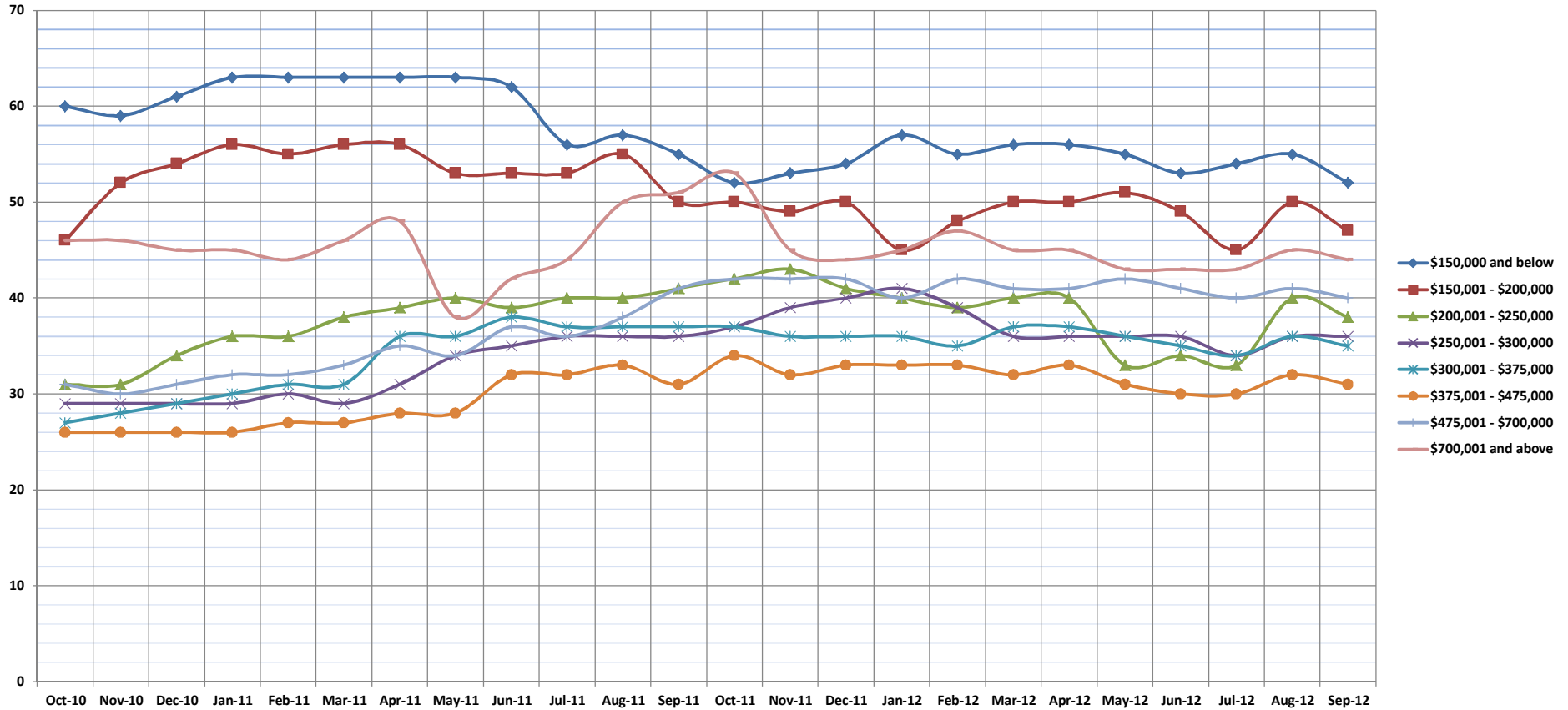


Days on Market Until Sale

Sep-12

OAHU, HAWAII: Monthly, by Price Range

(The median number of days between when a property is first listed and when an offer is accepted. Based on a 12 month rolling median.)



	Oct-10	Nov-10	Dec-10	Jan-11	Feb-11	Mar-11	Apr-11	May-11	Jun-11	Jul-11	Aug-11	Sep-11	Oct-11	Nov-11	Dec-11	Jan-12	Feb-12	Mar-12	Apr-12	May-12	Jun-12	Jul-12	Aug-12	Sep-12	
\$150,000 and below	60	59	61	63	63	63	63	63	63	62	56	57	55	52	53	54	57	55	56	56	55	53	54	55	52
\$150,001 - \$200,000	46	52	54	56	55	56	56	53	53	53	55	50	50	49	50	45	48	50	50	51	49	45	50	47	
\$200,001 - \$250,000	31	31	34	36	36	38	39	40	39	40	40	41	42	43	41	40	39	40	40	33	34	33	40	38	
\$250,001 - \$300,000	29	29	29	29	30	29	31	34	35	36	36	36	37	39	40	41	39	36	36	36	36	34	36	36	
\$300,001 - \$375,000	27	28	29	30	31	31	36	36	38	37	37	37	37	36	36	36	35	37	37	36	35	34	36	35	
\$375,001 - \$475,000	26	26	26	26	27	27	28	28	32	32	33	31	34	32	33	33	33	32	33	31	30	30	32	31	
\$475,001 - \$700,000	31	30	31	32	32	33	35	34	37	36	38	41	42	42	42	40	42	41	41	42	41	40	41	40	
\$700,001 and above	46	46	45	45	44	46	48	38	42	44	50	51	53	45	44	45	47	45	45	43	43	43	45	44	
All Condos	32	33	34	35	36	37	38	38	39	39	40	40	41	41	41	41	40	40	40	39	38	37	40	39	

SOURCE: Honolulu Board of REALTORS®, compiled from MLS data.

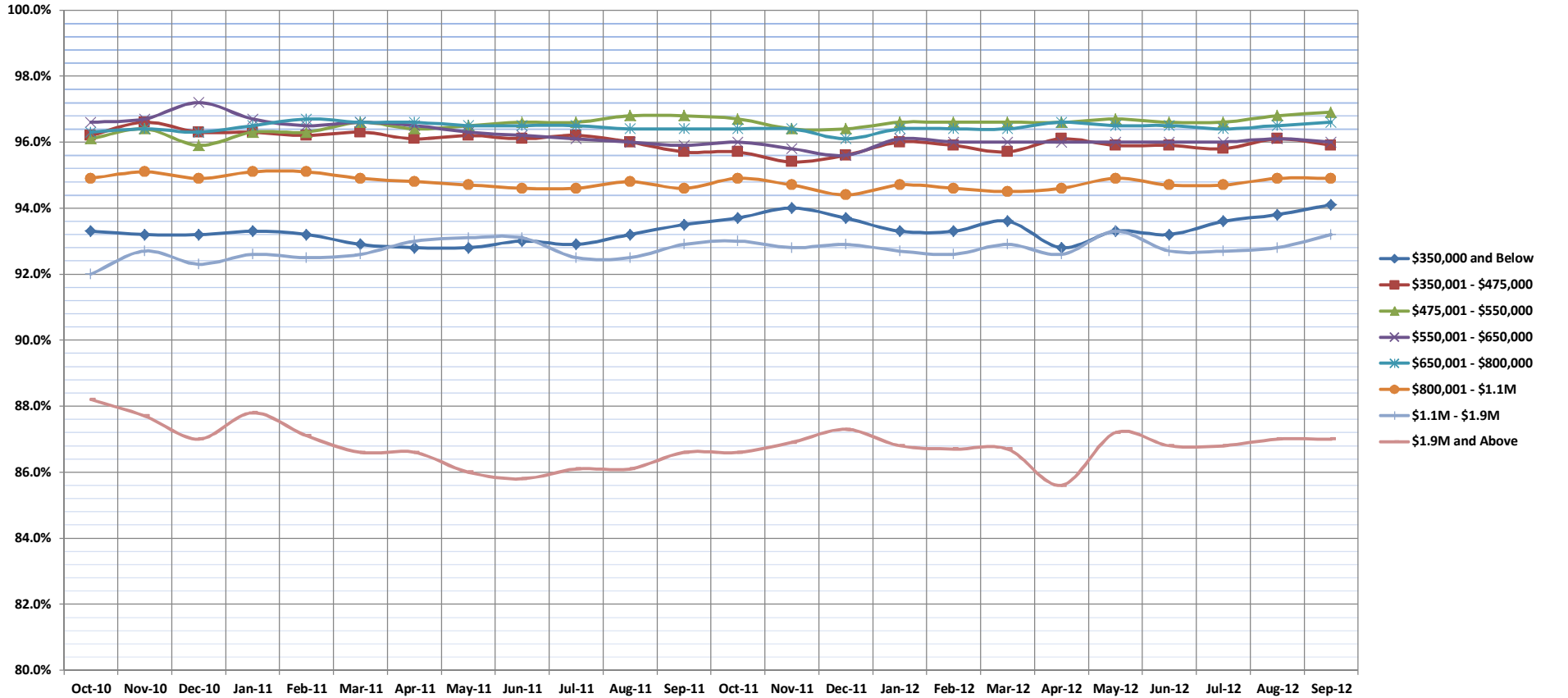


Percentage of Original Price Received

Sep-12

OAHU, HAWAII: Monthly, by Price Range

(The average percentage found when dividing a property's sales price by the original list price. Based on a rolling 12 month average.)



	Oct-10	Nov-10	Dec-10	Jan-11	Feb-11	Mar-11	Apr-11	May-11	Jun-11	Jul-11	Aug-11	Sep-11	Oct-11	Nov-11	Dec-11	Jan-12	Feb-12	Mar-12	Apr-12	May-12	Jun-12	Jul-12	Aug-12	Sep-12	
\$350,000 and Below	93.3%	93.2%	93.2%	93.3%	93.2%	92.9%	92.8%	92.8%	93.0%	92.9%	93.2%	93.5%	93.7%	94.0%	93.7%	93.3%	93.3%	93.6%	92.8%	93.3%	93.2%	93.6%	93.8%	94.1%	
\$350,001 - \$475,000	96.2%	96.6%	96.3%	96.3%	96.2%	96.3%	96.1%	96.2%	96.1%	96.2%	96.0%	95.7%	95.7%	95.4%	95.6%	96.0%	95.9%	95.7%	96.1%	95.9%	95.9%	95.8%	96.1%	95.9%	
\$475,001 - \$550,000	96.1%	96.4%	95.9%	96.3%	96.3%	96.6%	96.4%	96.5%	96.6%	96.6%	96.8%	96.8%	96.7%	96.4%	96.4%	96.6%	96.6%	96.6%	96.6%	96.6%	96.7%	96.6%	96.6%	96.8%	96.9%
\$550,001 - \$650,000	96.6%	96.7%	97.2%	96.7%	96.5%	96.6%	96.5%	96.3%	96.2%	96.1%	96.0%	95.9%	96.0%	95.8%	95.6%	96.1%	96.0%	96.0%	96.0%	96.0%	96.0%	96.0%	96.0%	96.1%	96.0%
\$650,001 - \$800,000	96.3%	96.4%	96.3%	96.5%	96.7%	96.6%	96.6%	96.5%	96.5%	96.5%	96.4%	96.4%	96.4%	96.4%	96.1%	96.4%	96.4%	96.4%	96.4%	96.6%	96.5%	96.5%	96.4%	96.5%	96.6%
\$800,001 - \$1.1M	94.9%	95.1%	94.9%	95.1%	95.1%	94.9%	94.8%	94.7%	94.6%	94.6%	94.8%	94.6%	94.9%	94.7%	94.4%	94.7%	94.6%	94.5%	94.6%	94.9%	94.7%	94.7%	94.9%	94.9%	94.9%
\$1.1M - \$1.9M	92.0%	92.7%	92.3%	92.6%	92.5%	92.6%	93.0%	93.1%	93.1%	92.5%	92.5%	92.9%	93.0%	92.8%	92.9%	92.7%	92.6%	92.9%	92.6%	93.3%	92.7%	92.7%	92.8%	93.2%	
\$1.9M and Above	88.2%	87.7%	87.0%	87.8%	87.1%	86.6%	86.6%	86.0%	85.8%	86.1%	86.1%	86.6%	86.6%	86.9%	87.3%	86.8%	86.7%	86.7%	85.6%	87.2%	86.8%	86.8%	87.0%	87.0%	
All Single Family Homes	95.3%	95.5%	95.5%	95.5%	95.4%	95.4%	95.3%	95.2%	95.2%	95.2%	95.2%	95.2%	95.2%	95.1%	95.0%	95.3%	95.2%	95.3%	95.3%	95.4%	95.3%	95.3%	95.5%	95.4%	

SOURCE: Honolulu Board of REALTORS®, compiled from MLS data.

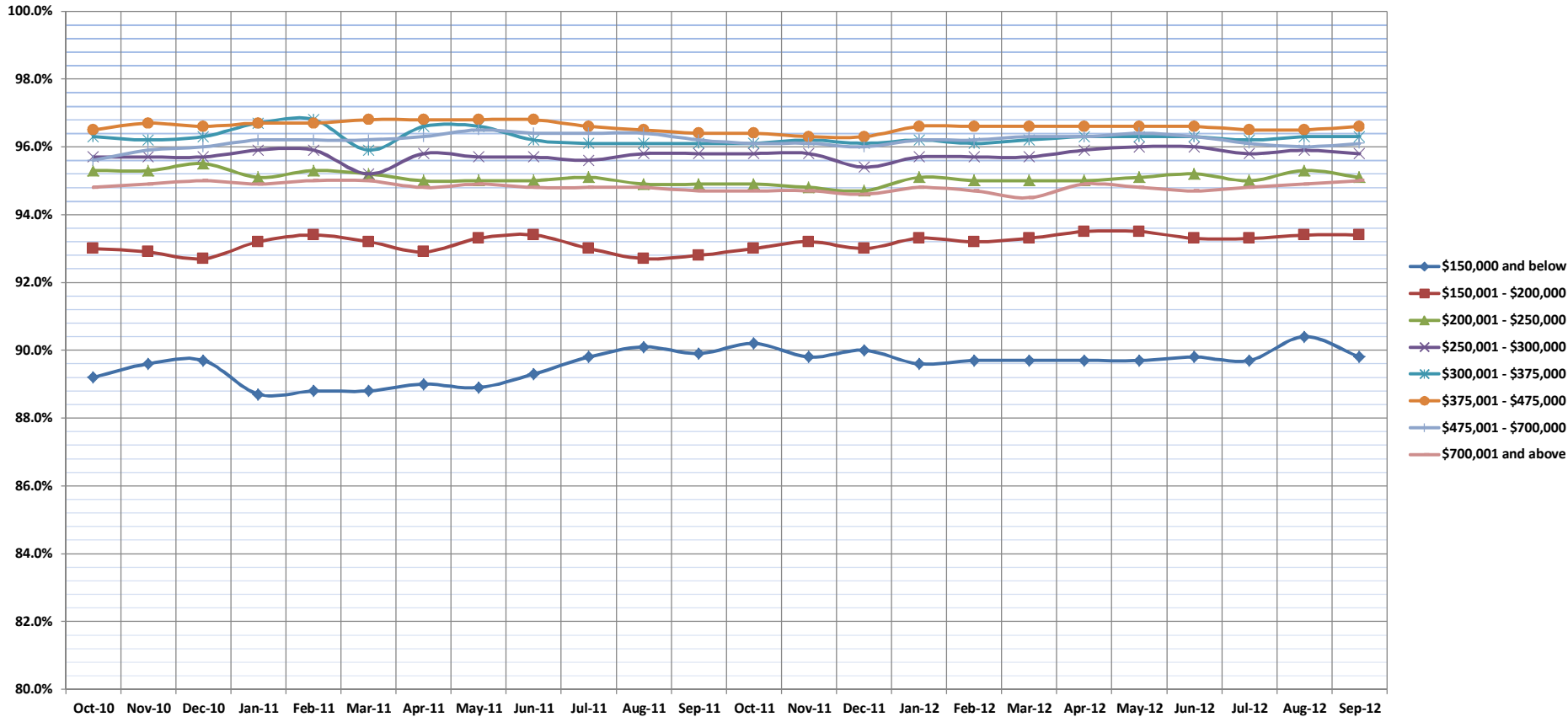


Percentage of Original Price Received

Sep-12

OAHU, HAWAII: Monthly, by Price Range

(The average percentage found when dividing a property's sales price by the original list price. Based on a rolling 12 month average.)



	Oct-10	Nov-10	Dec-10	Jan-11	Feb-11	Mar-11	Apr-11	May-11	Jun-11	Jul-11	Aug-11	Sep-11	Oct-11	Nov-11	Dec-11	Jan-12	Feb-12	Mar-12	Apr-12	May-12	Jun-12	Jul-12	Aug-12	Sep-12				
\$150,000 and below	89.2%	89.6%	89.7%	88.7%	88.8%	88.8%	89.0%	88.9%	89.3%	89.8%	90.1%	89.9%	90.2%	89.8%	90.0%	89.6%	89.7%	89.7%	89.7%	89.7%	89.7%	89.7%	89.8%	89.7%	90.4%	89.8%		
\$150,001 - \$200,000	93.0%	92.9%	92.7%	93.2%	93.4%	93.2%	92.9%	93.3%	93.4%	93.0%	92.7%	92.8%	93.0%	93.2%	93.0%	93.3%	93.2%	93.3%	93.3%	93.5%	93.5%	93.3%	93.3%	93.4%	93.4%	93.4%	93.4%	
\$200,001 - \$250,000	95.3%	95.3%	95.5%	95.1%	95.3%	95.2%	95.0%	95.0%	95.0%	95.1%	94.9%	94.9%	94.9%	94.8%	94.7%	95.1%	95.0%	95.0%	95.0%	95.1%	95.2%	95.0%	95.3%	95.1%	95.2%	95.0%	95.3%	
\$250,001 - \$300,000	95.7%	95.7%	95.7%	95.9%	95.9%	95.2%	95.8%	95.7%	95.7%	95.6%	95.8%	95.8%	95.8%	95.8%	95.4%	95.7%	95.7%	95.7%	95.9%	96.0%	96.0%	95.8%	95.9%	96.0%	96.0%	95.8%	95.9%	95.8%
\$300,001 - \$375,000	96.3%	96.2%	96.3%	96.7%	96.8%	95.9%	96.6%	96.6%	96.2%	96.1%	96.1%	96.1%	96.1%	96.2%	96.1%	96.2%	96.1%	96.2%	96.1%	96.2%	96.3%	96.3%	96.3%	96.3%	96.3%	96.2%	96.3%	96.3%
\$375,001 - \$475,000	96.5%	96.7%	96.6%	96.7%	96.7%	96.8%	96.8%	96.8%	96.8%	96.6%	96.5%	96.4%	96.4%	96.3%	96.3%	96.6%	96.6%	96.6%	96.6%	96.6%	96.6%	96.6%	96.6%	96.6%	96.6%	96.6%	96.6%	96.6%
\$475,001 - \$700,000	95.6%	95.9%	96.0%	96.2%	96.2%	96.2%	96.3%	96.5%	96.4%	96.4%	96.4%	96.2%	96.1%	96.1%	96.0%	96.2%	96.2%	96.3%	96.3%	96.3%	96.4%	96.3%	96.4%	96.3%	96.1%	96.0%	96.1%	
\$700,001 and above	92.4%	92.7%	93.3%	93.2%	93.3%	93.5%	93.6%	93.9%	93.7%	93.6%	93.7%	93.7%	93.8%	93.9%	93.9%	93.8%	93.8%	93.6%	93.9%	94.1%	93.8%	93.9%	94.1%	93.8%	93.9%	94.1%	94.3%	
All Condos	94.8%	94.9%	95.0%	94.9%	95.0%	95.0%	94.8%	94.9%	94.8%	94.8%	94.8%	94.7%	94.7%	94.7%	94.6%	94.8%	94.7%	94.5%	94.9%	94.8%	94.7%	94.8%	94.8%	94.9%	94.8%	94.9%	95.0%	

SOURCE: Honolulu Board of REALTORS®, compiled from MLS data.

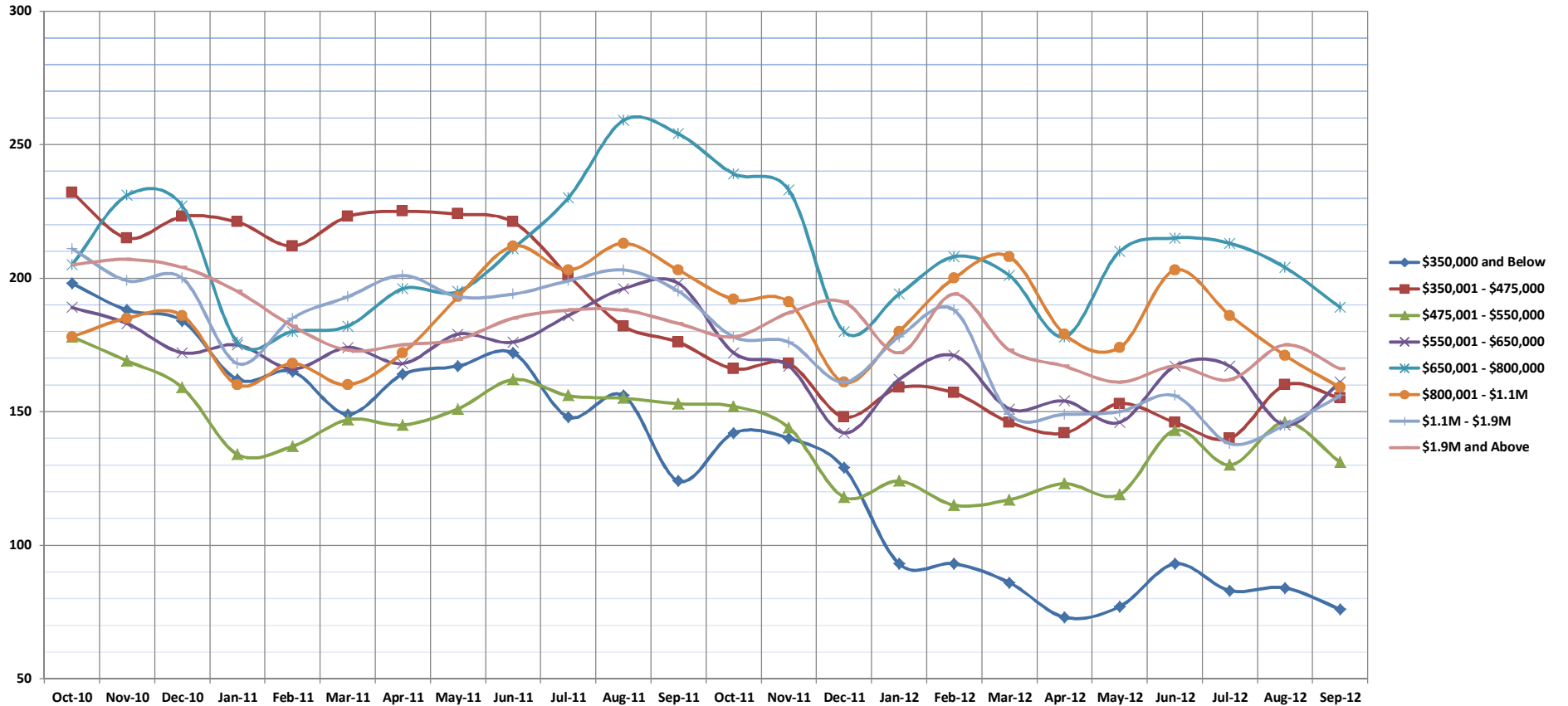


Inventory of Homes for Sale

Sep-12

OAHU, HAWAII: Monthly, by Price Range

(The number of properties available for sale in active status at the end of a given month.)



	Oct-10	Nov-10	Dec-10	Jan-11	Feb-11	Mar-11	Apr-11	May-11	Jun-11	Jul-11	Aug-11	Sep-11	Oct-11	Nov-11	Dec-11	Jan-12	Feb-12	Mar-12	Apr-12	May-12	Jun-12	Jul-12	Aug-12	Sep-12
\$350,000 and Below	198	188	184	162	165	149	164	167	172	148	156	124	142	140	129	93	93	86	73	77	93	83	84	76
\$350,001 - \$475,000	232	215	223	221	212	223	225	224	221	201	182	176	166	168	148	159	157	146	142	153	146	140	160	155
\$475,001 - \$550,000	178	169	159	134	137	147	145	151	162	156	155	153	152	144	118	124	115	117	123	119	143	130	146	131
\$550,001 - \$650,000	189	183	172	175	166	174	168	179	176	186	196	198	172	167	142	162	171	151	154	146	167	167	145	161
\$650,001 - \$800,000	205	231	227	176	180	182	196	195	211	230	259	254	239	233	180	194	208	201	178	210	215	213	204	189
\$800,001 - \$1.1M	178	185	186	160	168	160	172	193	212	203	213	203	192	191	161	180	200	208	179	174	203	186	171	159
\$1.1M - \$1.9M	211	199	200	168	185	193	201	193	194	199	203	195	178	176	161	178	188	149	149	150	156	138	145	156
\$1.9M and Above	205	207	204	195	182	173	175	177	185	188	188	183	178	187	191	172	194	173	167	161	167	162	175	166
All Single Family Homes	1596	1577	1555	1391	1395	1401	1446	1479	1533	1511	1552	1486	1419	1406	1230	1262	1326	1231	1165	1190	1290	1219	1230	1193

SOURCE: Honolulu Board of REALTORS®, compiled from MLS data.

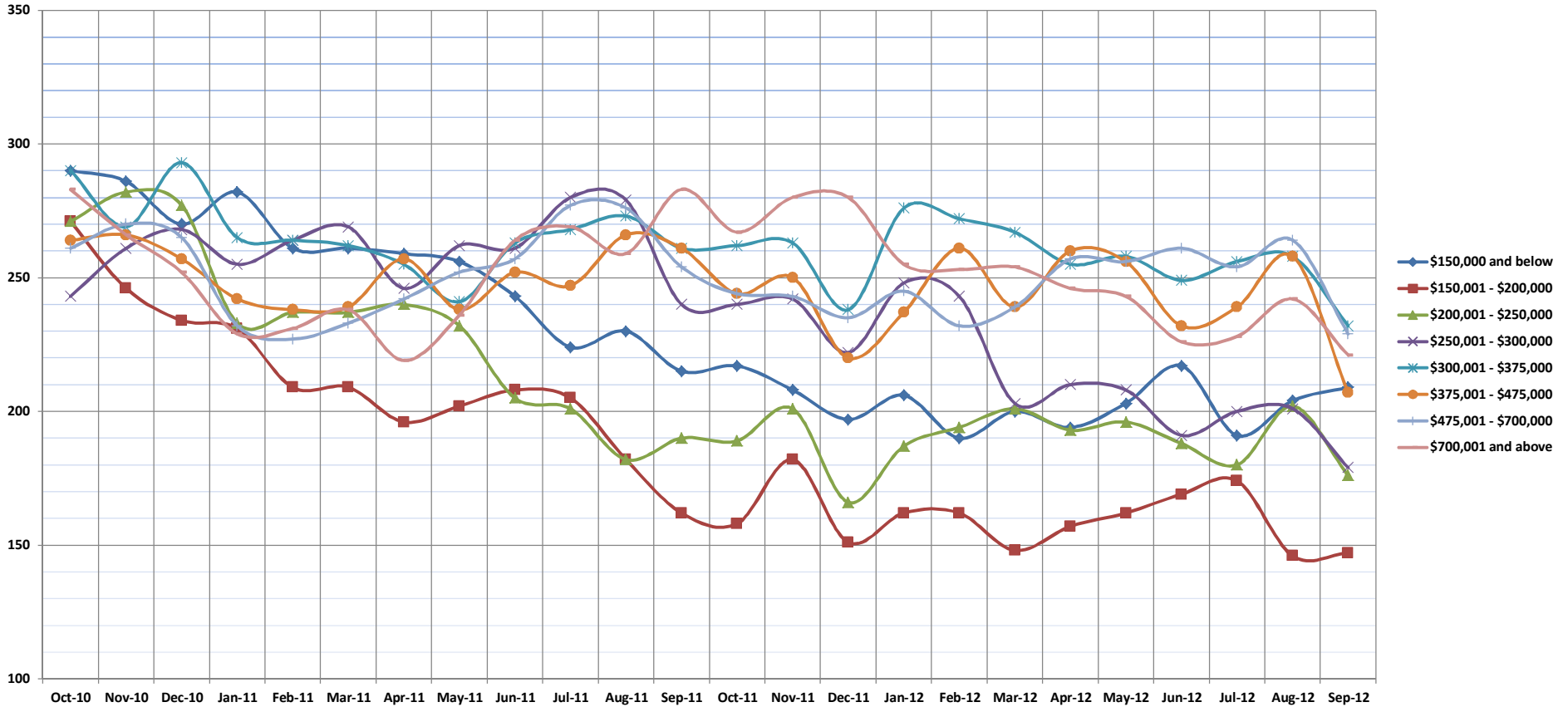


Inventory of Homes for Sale

Sep-12

OAHU, HAWAII: Monthly, by Price Range

(The number of properties available for sale in active status at the end of a given month.)



	Oct-10	Nov-10	Dec-10	Jan-11	Feb-11	Mar-11	Apr-11	May-11	Jun-11	Jul-11	Aug-11	Sep-11	Oct-11	Nov-11	Dec-11	Jan-12	Feb-12	Mar-12	Apr-12	May-12	Jun-12	Jul-12	Aug-12	Sep-12
\$150,000 and below	290	286	270	282	261	261	259	256	243	224	230	215	217	208	197	206	190	200	194	203	217	191	204	209
\$150,001 - \$200,000	271	246	234	231	209	209	196	202	208	205	182	162	158	182	151	162	162	148	157	162	169	174	146	147
\$200,001 - \$250,000	271	282	277	233	237	237	240	232	205	201	182	190	189	201	166	187	194	201	193	196	188	180	202	176
\$250,001 - \$300,000	243	261	268	255	264	269	246	262	261	280	279	240	240	242	222	248	243	203	210	208	191	200	201	179
\$300,001 - \$375,000	290	269	293	265	264	262	255	241	263	268	273	261	262	263	238	276	272	267	255	258	249	256	258	232
\$375,001 - \$475,000	264	266	257	242	238	239	257	238	252	247	266	261	244	250	220	237	261	239	260	256	232	239	258	207
\$475,001 - \$700,000	261	270	265	232	227	233	242	252	257	277	276	254	244	243	235	245	232	239	257	256	261	254	264	229
\$700,001 and above	283	266	252	229	231	238	219	236	264	269	259	283	267	280	280	255	253	254	246	243	226	228	242	221
All Condos	2173	2146	2116	1969	1931	1948	1914	1919	1953	1971	1947	1866	1821	1869	1709	1816	1807	1751	1772	1782	1733	1722	1775	1600

SOURCE: Honolulu Board of REALTORS®, compiled from MLS data.

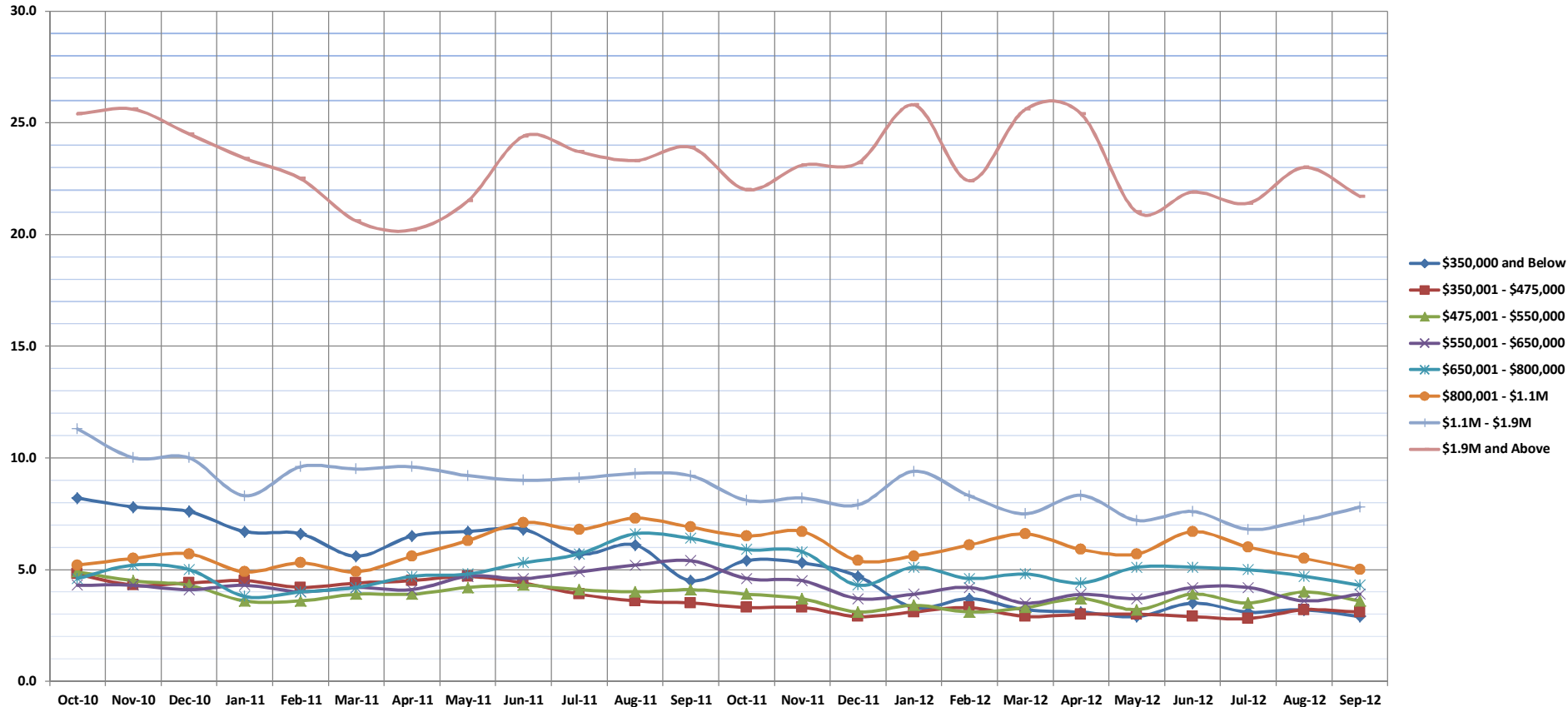


Months Supply of Inventory

Sep-12

OAHU, HAWAII: Monthly, by Price Range

(Compares the number of active listings available to the average monthly pending sales from the last 12 months.)



	Oct-10	Nov-10	Dec-10	Jan-11	Feb-11	Mar-11	Apr-11	May-11	Jun-11	Jul-11	Aug-11	Sep-11	Oct-11	Nov-11	Dec-11	Jan-12	Feb-12	Mar-12	Apr-12	May-12	Jun-12	Jul-12	Aug-12	Sep-12
\$350,000 and Below	8.2	7.8	7.6	6.7	6.6	5.6	6.5	6.7	6.8	5.7	6.1	4.5	5.4	5.3	4.7	3.3	3.7	3.2	3.1	2.9	3.5	3.1	3.2	2.9
\$350,001 - \$475,000	4.8	4.3	4.4	4.5	4.2	4.4	4.5	4.7	4.4	3.9	3.6	3.5	3.3	3.3	2.9	3.1	3.3	2.9	3.0	3.0	2.9	2.8	3.2	3.1
\$475,001 - \$550,000	4.9	4.5	4.3	3.6	3.6	3.9	3.9	4.2	4.3	4.1	4.0	4.1	3.9	3.7	3.1	3.4	3.1	3.3	3.7	3.2	3.9	3.5	4.0	3.6
\$550,001 - \$650,000	4.3	4.3	4.1	4.3	4.0	4.2	4.1	4.7	4.6	4.9	5.2	5.4	4.6	4.5	3.7	3.9	4.2	3.5	3.9	3.7	4.2	4.2	3.6	3.9
\$650,001 - \$800,000	4.6	5.2	5.0	3.8	4.0	4.2	4.7	4.8	5.3	5.7	6.6	6.4	5.9	5.8	4.3	5.1	4.6	4.8	4.4	5.1	5.1	5.0	4.7	4.3
\$800,001 - \$1.1M	5.2	5.5	5.7	4.9	5.3	4.9	5.6	6.3	7.1	6.8	7.3	6.9	6.5	6.7	5.4	5.6	6.1	6.6	5.9	5.7	6.7	6.0	5.5	5.0
\$1.1M - \$1.9M	11.3	10.0	10.0	8.3	9.6	9.5	9.6	9.2	9.0	9.1	9.3	9.2	8.1	8.2	7.9	9.4	8.3	7.5	8.3	7.2	7.6	6.8	7.2	7.8
\$1.9M and Above	25.4	25.6	24.5	23.4	22.5	20.6	20.2	21.5	24.4	23.7	23.3	23.9	22.0	23.1	23.2	25.8	22.4	25.6	25.4	21.0	21.9	21.4	23.0	21.7
All Single Family Homes	6.2	6.1	6.0	5.4	5.4	5.4	5.7	6.0	6.1	6.0	6.2	5.9	5.6	5.6	4.8	5.0	5.1	4.8	4.9	4.7	5.1	4.8	4.8	4.7

SOURCE: Honolulu Board of REALTORS®, compiled from MLS data.

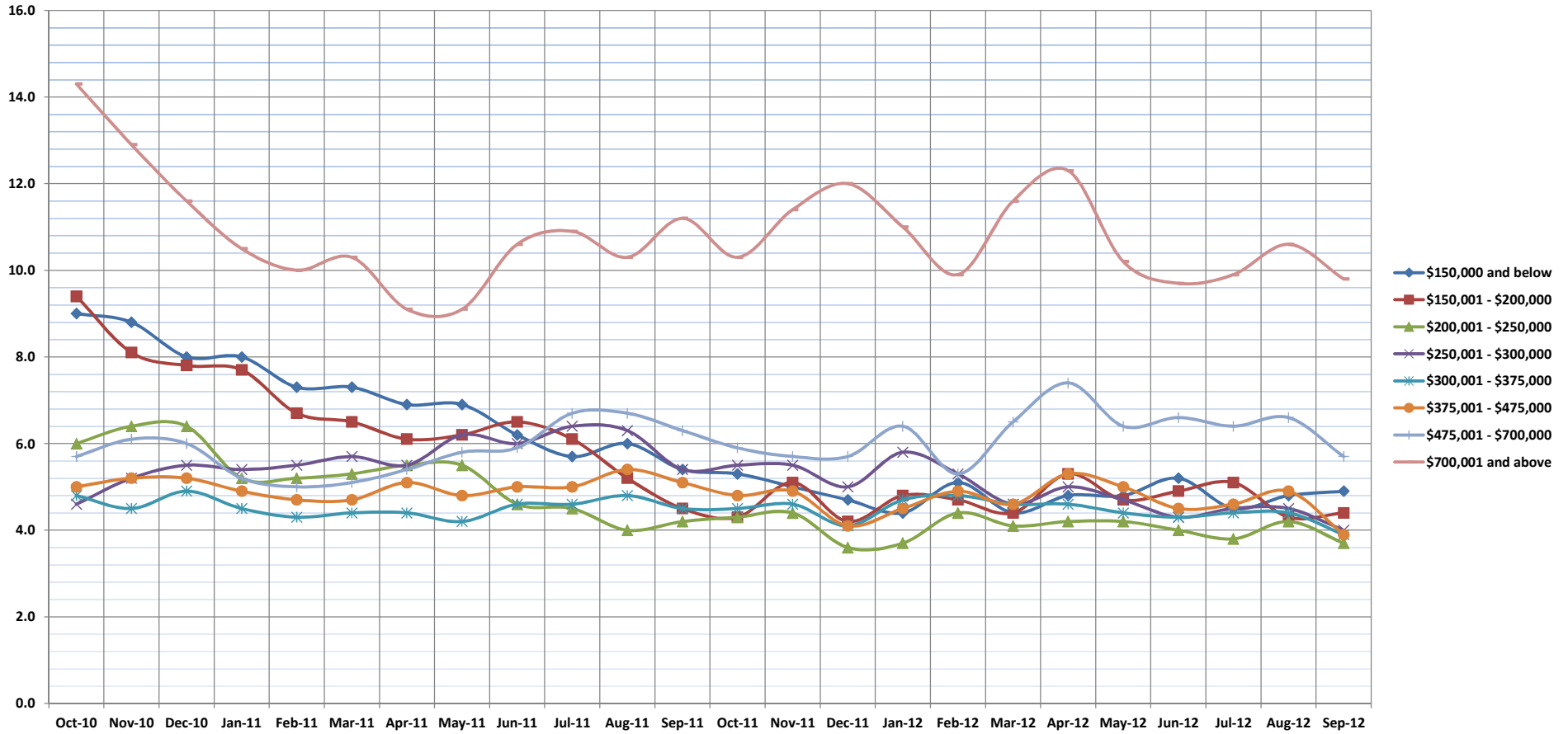


Months Supply of Inventory

Sep-12

OAHU, HAWAII: Monthly, by Price Range

(Compares the number of active listings available to the average monthly pending sales from the last 12 months.)



	Oct-10	Nov-10	Dec-10	Jan-11	Feb-11	Mar-11	Apr-11	May-11	Jun-11	Jul-11	Aug-11	Sep-11	Oct-11	Nov-11	Dec-11	Jan-12	Feb-12	Mar-12	Apr-12	May-12	Jun-12	Jul-12	Aug-12	Sep-12
\$150,000 and below	9.0	8.8	8.0	8.0	7.3	7.3	6.9	6.9	6.2	5.7	6.0	5.4	5.3	5.0	4.7	4.4	5.1	4.4	4.8	4.8	5.2	4.5	4.8	4.9
\$150,001 - \$200,000	9.4	8.1	7.8	7.7	6.7	6.5	6.1	6.2	6.5	6.1	5.2	4.5	4.3	5.1	4.2	4.8	4.7	4.4	5.3	4.7	4.9	5.1	4.3	4.4
\$200,001 - \$250,000	6.0	6.4	6.4	5.2	5.2	5.3	5.5	5.5	4.6	4.5	4.0	4.2	4.3	4.4	3.6	3.7	4.4	4.1	4.2	4.2	4.0	3.8	4.2	3.7
\$250,001 - \$300,000	4.6	5.2	5.5	5.4	5.5	5.7	5.5	6.2	6.0	6.4	6.3	5.4	5.5	5.5	5.0	5.8	5.3	4.6	5.0	4.7	4.3	4.5	4.5	4.0
\$300,001 - \$375,000	4.8	4.5	4.9	4.5	4.3	4.4	4.4	4.2	4.6	4.6	4.8	4.5	4.5	4.6	4.1	4.7	4.8	4.6	4.6	4.4	4.3	4.4	4.4	3.9
\$375,001 - \$475,000	5.0	5.2	5.2	4.9	4.7	4.7	5.1	4.8	5.0	5.0	5.4	5.1	4.8	4.9	4.1	4.5	4.9	4.6	5.3	5.0	4.5	4.6	4.9	3.9
\$475,001 - \$700,000	5.7	6.1	6.0	5.2	5.0	5.1	5.4	5.8	5.9	6.7	6.7	6.3	5.9	5.7	5.7	6.4	5.3	6.5	7.4	6.4	6.6	6.4	6.6	5.7
\$700,001 and above	14.3	12.9	11.6	10.5	10.0	10.3	9.1	9.1	10.6	10.9	10.3	11.2	10.3	11.4	12.0	11.0	9.9	11.6	12.3	10.2	9.7	9.9	10.6	9.8
All Condos	6.4	6.4	6.4	5.9	5.7	5.8	5.7	5.8	5.8	5.9	5.8	5.5	5.3	5.5	5.0	5.2	5.3	5.1	5.6	5.2	5.1	5.0	5.2	4.7

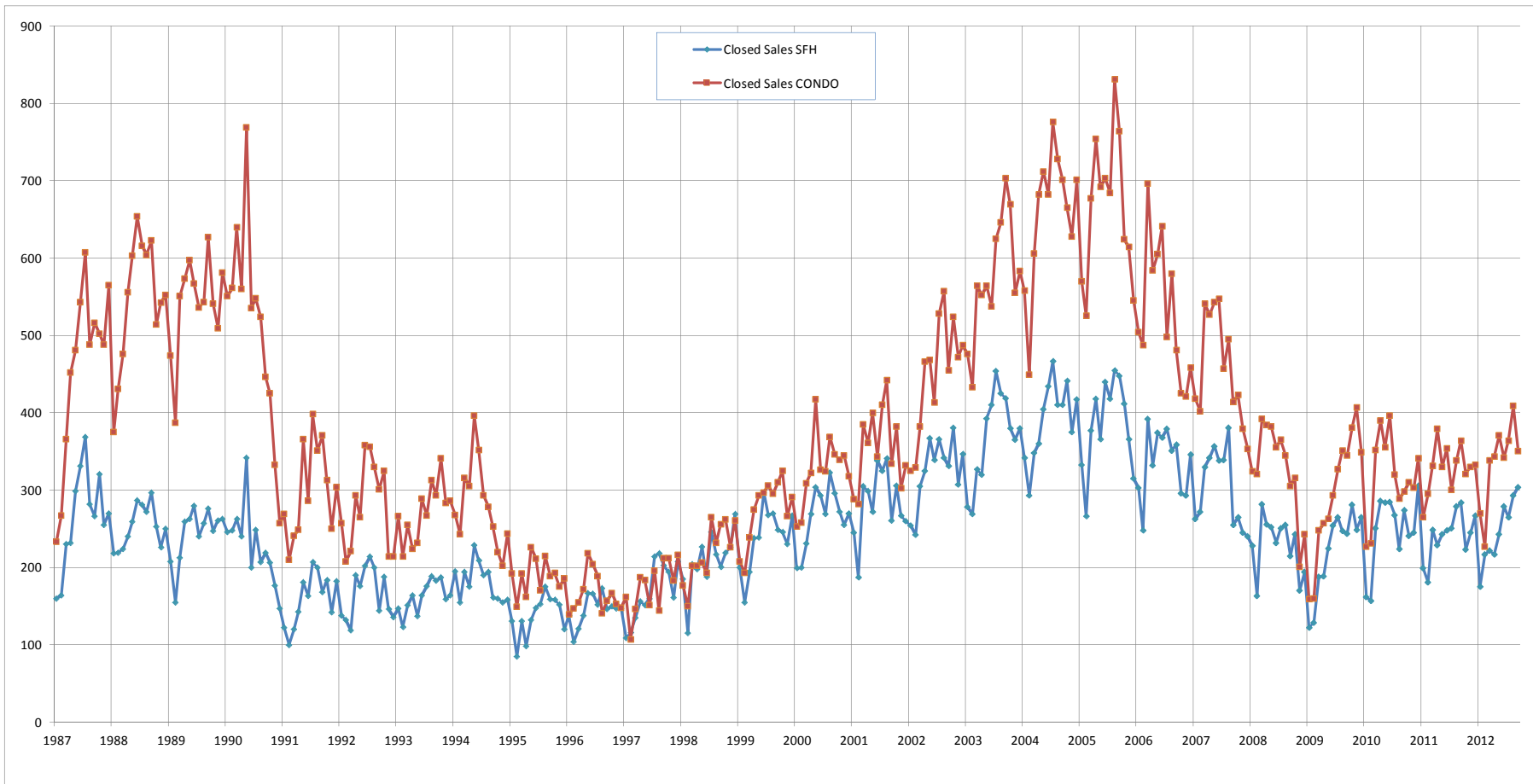
SOURCE: Honolulu Board of REALTORS®, compiled from MLS data.



Closed Sales

Single Family Homes and Condos

OAHU, HAWAII: Jan 1987 to the Present

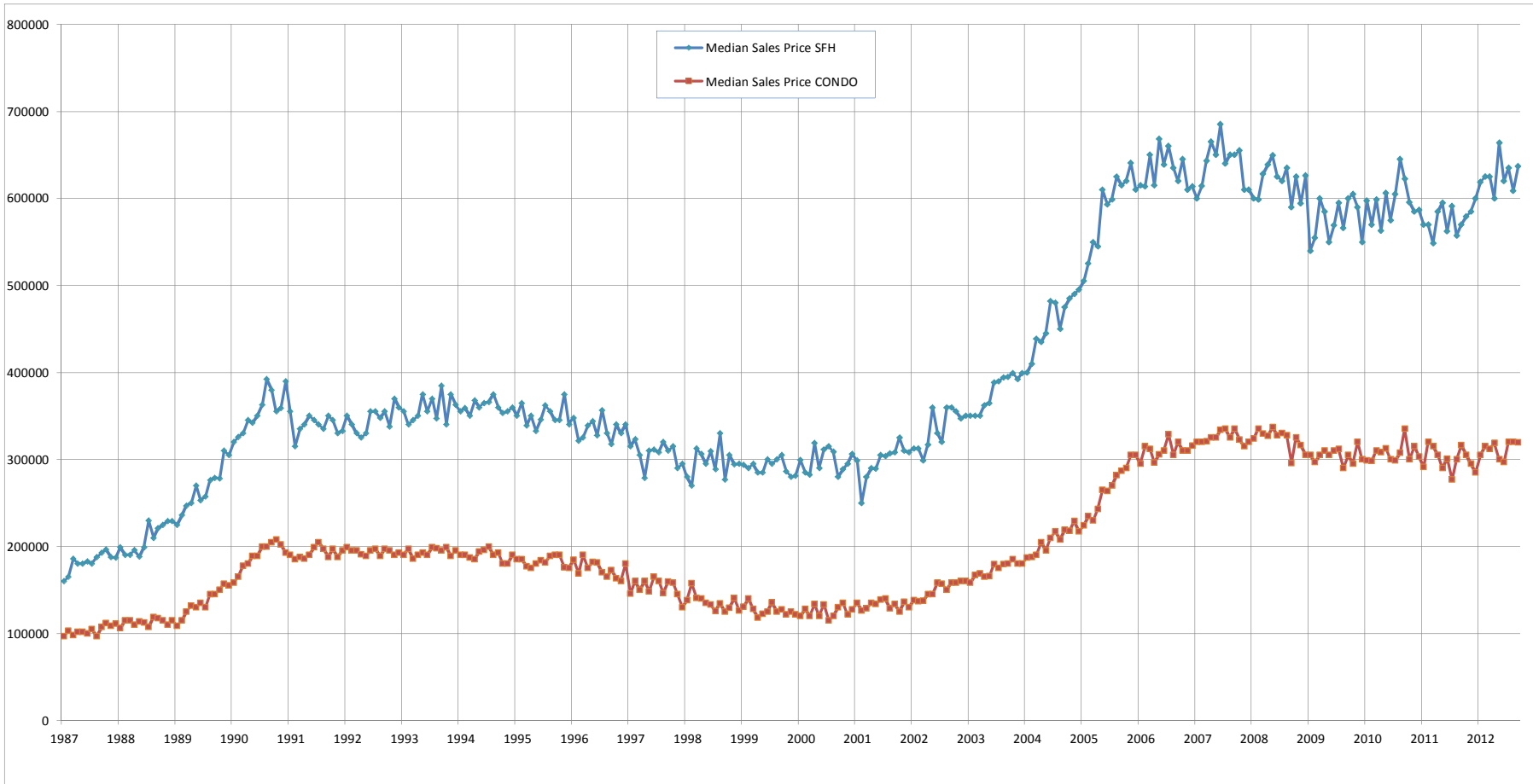


SOURCE: Honolulu Board of REALTORS®, compiled from MLS data.

Median Sales Price

Single Family Homes and Condos

OAHU, HAWAII: Jan 1987 to the Present



SOURCE: Honolulu Board of REALTORS®, compiled from MLS data.