

Local Market Update

Single Family Homes

September 2012



September 2012		New Listings			Closed Sales			Median Sales Price			Percent of Original Price Received			Days on Market Until Sale			Inventory of Homes for Sale		
		Sep-12	Sep-11	Change	Sep-12	Sep-11	Change	Sep-12	Sep-11	Change	Sep-12	Sep-11	Change	Sep-12	Sep-11	Change	Sep-12	Sep-11	Change
Aina Haina - Kuliouou	1-3-6 to 1-3-8	7	5	40%	12	5	140%	\$1,075,000	\$1,075,000	0%	102.4%	91.6%	12%	34	29	17%	42	45	-7%
Ala Moana - Kakaako	1-2-3	2	0	--	0	0	--	\$0	\$0	--	0.0%	0.0%	--	0	0	--	2	4	-50%
Downtown - Nuuanu	1-1-8 to 1-2-2	10	7	43%	6	5	20%	\$643,500	\$622,500	3%	98.5%	96.7%	2%	22	26	-15%	39	53	-26%
Ewa Plain	1-9-1	53	45	18%	41	48	-15%	\$477,000	\$452,500	5%	98.9%	96.9%	2%	32	29	10%	126	116	9%
Hawaii Kai	1-3-9	17	25	-32%	26	18	44%	\$899,500	\$808,000	11%	99.0%	95.4%	4%	39	23	70%	86	91	-5%
Kailua - Waimanalo	1-4-1 to Selected 1-4-4	27	45	-40%	26	24	8%	\$832,000	\$730,000	14%	96.5%	95.4%	1%	19	29	-34%	94	126	-25%
Kalihi - Palama	1-1-2 to 1-1-7	16	13	23%	9	12	-25%	\$535,000	\$495,000	8%	97.4%	95.6%	2%	12	36	-67%	37	66	-44%
Kaneohe	Selected 1-4-4 to 1-4-7	21	22	-5%	22	19	16%	\$592,500	\$592,000	0%	103.9%	93.4%	11%	19	57	-67%	83	116	-28%
Kapahulu - Diamond Head	1-3-1 to 1-3-4	25	26	-4%	21	28	-25%	\$865,000	\$889,000	-3%	98.9%	95.2%	4%	10	22	-55%	80	96	-17%
Makaha - Nanakuli	1-8-1 to 1-8-9	31	25	24%	22	29	-24%	\$308,000	\$295,000	4%	94.8%	96.0%	-1%	26	22	18%	125	123	2%
Makakilo	1-9-2 to 1-9-3	12	10	20%	13	11	18%	\$610,000	\$530,000	15%	98.2%	97.5%	1%	39	36	8%	53	50	6%
Makiki - Moiliili	1-2-4 to 1-2-9 (except 1-2-6)	10	16	-38%	9	9	0%	\$985,000	\$830,000	19%	98.6%	94.4%	4%	21	49	-57%	40	53	-25%
Mililani	Selected 1-9-4 to 1-9-5	21	15	40%	15	16	-6%	\$585,000	\$637,500	-8%	95.1%	97.3%	-2%	26	28	-7%	51	65	-22%
Monalua - Salt Lake	1-1-1	3	7	-57%	5	3	67%	\$760,000	\$501,000	52%	98.7%	97.7%	1%	39	20	95%	17	29	-41%
North Shore	1-5-6 to 1-6-9	9	13	-31%	6	9	-33%	\$460,000	\$593,700	-23%	94.5%	90.3%	5%	109	67	63%	59	77	-23%
Pearl City - Aiea	1-9-6 to 1-9-9	25	26	-4%	26	13	100%	\$652,000	\$545,000	20%	95.9%	93.7%	2%	25	38	-34%	74	77	-4%
Wahiawa	1-7-1 to 1-7-7	7	11	-36%	8	2	300%	\$371,250	\$440,000	-16%	97.2%	97.0%	0%	24	81	-70%	27	33	-18%
Waialae - Kahala	1-3-5	19	12	58%	11	11	0%	\$1,760,000	\$1,400,000	26%	100.6%	91.1%	10%	51	68	-25%	52	57	-9%
Waikiki	1-2-6	0	0	--	0	0	--	\$0	\$0	--	0.0%	0.0%	--	0	0	--	0	2	--
Waipahu	1-9-4	21	29	-28%	23	16	44%	\$523,000	\$497,000	5%	97.4%	95.6%	2%	32	28	14%	62	104	-40%
Windward Coast	1-4-8 to 1-5-5	8	13	-38%	3	3	0%	\$578,000	\$300,000	93%	97.1%	89.4%	9%	7	76	-91%	44	54	-19%

Year to Date		New Listings			Closed Sales			Median Sales Price			Percent of Original Price Received			Days on Market Until Sale		
		Sep-12	Sep-11	Change	Sep-12	Sep-11	Change	Sep-12	Sep-11	Change	Sep-12	Sep-11	Change	Sep-12	Sep-11	Change
Aina Haina - Kuliouou	1-3-6 to 1-3-8	87	94	-7%	56	58	-3%	\$967,500	\$1,250,000	-23%	97.6%	92.0%	6%	22	38	-42%
Ala Moana - Kakaako	1-2-3	8	6	33%	7	1	600%	\$799,900	\$566,000	41%	94.2%	95.1%	-1%	52	86	-40%
Downtown - Nuuanu	1-1-8 to 1-2-2	89	113	-21%	56	58	-3%	\$724,500	\$756,000	-4%	94.5%	93.4%	1%	33	44	-25%
Ewa Plain	1-9-1	447	490	-9%	362	348	4%	\$460,000	\$435,000	6%	97.4%	97.8%	0%	28	31	-10%
Hawaii Kai	1-3-9	187	247	-24%	152	122	25%	\$880,000	\$879,000	0%	94.4%	96.4%	-2%	33	22	50%
Kailua - Waimanalo	1-4-1 to Selected 1-4-4	247	338	-27%	219	183	20%	\$795,000	\$790,000	1%	96.4%	94.8%	2%	31	35	-11%
Kalihi - Palama	1-1-2 to 1-1-7	103	145	-29%	72	73	-1%	\$560,000	\$495,000	13%	94.7%	94.6%	0%	19	34	-44%
Kaneohe	Selected 1-4-4 to 1-4-7	193	281	-31%	133	150	-11%	\$655,500	\$650,000	1%	99.5%	94.9%	5%	28	32	-13%
Kapahulu - Diamond Head	1-3-1 to 1-3-4	206	254	-19%	187	156	20%	\$793,000	\$749,500	6%	96.1%	94.4%	2%	29	29	0%
Makaha - Nanakuli	1-8-1 to 1-8-9	243	318	-24%	153	180	-15%	\$310,000	\$275,000	13%	93.9%	94.2%	0%	31	30	3%
Makakilo	1-9-2 to 1-9-3	113	131	-14%	86	70	23%	\$572,000	\$510,000	12%	97.8%	95.9%	2%	51	32	59%
Makiki - Moiliili	1-2-4 to 1-2-9 (except 1-2-6)	97	142	-32%	82	70	17%	\$910,500	\$877,500	4%	94.8%	92.6%	2%	21	41	-49%
Mililani	Selected 1-9-4 to 1-9-5	197	209	-6%	179	124	44%	\$590,000	\$592,500	0%	96.7%	96.7%	0%	31	35	-11%
Monalua - Salt Lake	1-1-1	41	63	-35%	37	38	-3%	\$700,500	\$620,000	13%	96.6%	95.0%	2%	22	28	-21%
North Shore	1-5-6 to 1-6-9	91	154	-41%	62	57	9%	\$645,000	\$586,250	10%	90.2%	93.2%	-3%	66	66	0%
Pearl City - Aiea	1-9-6 to 1-9-9	181	230	-21%	141	140	1%	\$600,000	\$570,000	5%	96.9%	96.1%	1%	28	35	-20%
Wahiawa	1-7-1 to 1-7-7	65	73	-11%	47	52	-10%	\$385,000	\$389,500	-1%	97.2%	92.1%	6%	22	78	-72%
Waialae - Kahala	1-3-5	98	118	-17%	81	77	5%	\$1,450,000	\$1,285,000	13%	96.7%	92.3%	5%	49	39	26%
Waikiki	1-2-6	1	2	-50%	1	0	--	\$835,000	\$0	--	92.9%	0.0%	--	42	0	--
Waipahu	1-9-4	157	300	-48%	133	181	-27%	\$485,000	\$505,000	-4%	95.1%	96.3%	-1%	30	39	-23%
Windward Coast	1-4-8 to 1-5-5	71	110	-35%	32	43	-26%	\$484,000	\$524,500	-8%	88.0%	91.2%	-4%	27	55	-51%

SOURCE: Honolulu Board of REALTORS®, compiled from MLS data.

Local Market Update

Condos

September 2012



September 2012		New Listings			Closed Sales			Median Sales Price			Percent of Original Price Received			Days on Market Until Sale			Inventory of Homes for Sale		
		Sep-12	Sep-11	Change	Sep-12	Sep-11	Change	Sep-12	Sep-11	Change	Sep-12	Sep-11	Change	Sep-12	Sep-11	Change	Sep-12	Sep-11	Change
Aina Haina - Kuliouou	1-3-6 to 1-3-8	1	0	--	1	0	--	\$510,000	\$0	--	98.1%	0.0%	--	181	0	--	3	2	50%
Ala Moana - Kakaako	1-2-3	39	57	-32%	29	40	-28%	\$289,000	\$346,500	-17%	96.7%	95.1%	2%	30	34	-12%	130	184	-29%
Downtown - Nuuanu	1-1-8 to 1-2-2	34	41	-17%	22	19	16%	\$329,500	\$370,000	-11%	94.8%	92.8%	2%	26	40	-35%	105	151	-30%
Ewa Plain	1-9-1	39	34	15%	26	17	53%	\$242,000	\$308,000	-21%	100.9%	98.4%	3%	28	43	-35%	84	71	18%
Hawaii Kai	1-3-9	14	20	-30%	16	18	-11%	\$527,000	\$491,500	7%	99.1%	95.7%	4%	49	34	44%	46	84	-45%
Kailua - Waimanalo	1-4-1 to Selected 1-4-4	12	13	-8%	7	6	17%	\$505,000	\$352,500	43%	96.2%	98.5%	-2%	19	18	6%	25	26	-4%
Kalihi - Palama	1-1-2 to 1-1-7	9	16	-44%	11	10	10%	\$367,000	\$323,000	14%	95.3%	95.3%	0%	22	36	-39%	33	35	-6%
Kaneohe	Selected 1-4-4 to 1-4-7	20	13	54%	9	14	-36%	\$410,000	\$361,000	14%	100.0%	95.7%	4%	15	49	-69%	40	62	-35%
Kapahulu - Diamond Head	1-3-1 to 1-3-4	6	7	-14%	3	4	-25%	\$455,000	\$1,525,000	-70%	91.4%	95.1%	-4%	42	26	62%	56	64	-13%
Makaha - Nanakuli	1-8-1 to 1-8-9	14	20	-30%	7	8	-13%	\$90,000	\$80,000	13%	90.9%	91.0%	0%	44	27	63%	60	70	-14%
Makakilo	1-9-2 to 1-9-3	7	7	0%	6	9	-33%	\$242,500	\$250,000	-3%	101.1%	95.0%	6%	10	23	-57%	14	6	133%
Makiki - Moiliili	1-2-4 to 1-2-9 (except 1-2-6)	62	72	-14%	48	53	-9%	\$347,500	\$329,000	6%	99.4%	94.3%	5%	22	37	-41%	175	223	-22%
Mililani	Selected 1-9-4 to 1-9-5	23	15	53%	23	20	15%	\$269,500	\$255,000	6%	94.1%	97.2%	-3%	30	25	20%	68	62	10%
Monalua - Salt Lake	1-1-1	17	16	6%	18	17	6%	\$399,500	\$300,000	33%	100.5%	94.3%	7%	18	54	-67%	45	72	-38%
North Shore	1-5-6 to 1-6-9	1	6	-83%	3	6	-50%	\$222,500	\$380,750	-42%	95.9%	78.0%	23%	9	107	-92%	26	32	-19%
Pearl City - Aiea	1-9-6 to 1-9-9	32	33	-3%	24	23	4%	\$304,000	\$302,500	0%	100.0%	94.3%	6%	39	23	70%	86	91	-5%
Wahiawa	1-7-1 to 1-7-7	1	3	--	1	1	--	\$100,000	\$140,000	--	74.1%	73.7%	--	115	170	--	12	7	71%
Waiialae - Kahala	1-3-5	4	3	33%	8	8	0%	\$418,000	\$625,000	-33%	98.5%	91.0%	8%	12	20	-40%	18	14	29%
Waikiki	1-2-6	129	132	-2%	63	66	-5%	\$295,000	\$282,500	4%	98.7%	92.6%	7%	43	51	-16%	499	497	0%
Waipahu	1-9-4	16	17	-6%	20	21	-5%	\$270,000	\$310,000	-13%	95.7%	98.0%	-2%	23	21	10%	63	84	-25%
Windward Coast	1-4-8 to 1-5-5	2	0	--	0	2	--	\$0	\$108,450	--	0.0%	77.5%	--	0	73	--	12	16	-25%

Year to Date		New Listings			Closed Sales			Median Sales Price			Percent of Original Price Received			Days on Market Until Sale		
		Sep-12	Sep-11	Change	Sep-12	Sep-11	Change	Sep-12	Sep-11	Change	Sep-12	Sep-11	Change	Sep-12	Sep-11	Change
Aina Haina - Kuliouou	1-3-6 to 1-3-8	5	6	-17%	3	6	-50%	\$510,000	\$545,000	-6%	100.0%	97.9%	2%	42	20	110%
Ala Moana - Kakaako	1-2-3	338	484	-30%	293	285	3%	\$340,000	\$349,000	-3%	96.3%	94.6%	2%	39	45	-13%
Downtown - Nuuanu	1-1-8 to 1-2-2	275	394	-30%	224	208	8%	\$372,500	\$379,000	-2%	96.1%	94.1%	2%	35	42	-17%
Ewa Plain	1-9-1	242	266	-9%	212	210	1%	\$307,500	\$305,000	1%	97.6%	98.6%	-1%	26	39	-33%
Hawaii Kai	1-3-9	146	229	-36%	131	134	-2%	\$523,000	\$517,000	1%	96.9%	95.9%	1%	41	35	17%
Kailua - Waimanalo	1-4-1 to Selected 1-4-4	92	87	6%	87	56	55%	\$415,000	\$376,000	10%	95.4%	96.4%	-1%	22	36	-39%
Kalihi - Palama	1-1-2 to 1-1-7	88	120	-27%	77	66	17%	\$320,000	\$270,000	19%	94.4%	94.5%	0%	34	36	-6%
Kaneohe	Selected 1-4-4 to 1-4-7	135	177	-24%	100	106	-6%	\$409,500	\$374,000	9%	99.9%	94.7%	5%	22	61	-64%
Kapahulu - Diamond Head	1-3-1 to 1-3-4	93	120	-23%	59	67	-12%	\$465,000	\$432,500	8%	93.4%	94.7%	-1%	38	76	-50%
Makaha - Nanakuli	1-8-1 to 1-8-9	106	140	-24%	55	72	-24%	\$90,000	\$89,450	1%	90.9%	91.7%	-1%	52	38	37%
Makakilo	1-9-2 to 1-9-3	75	83	-10%	64	59	8%	\$247,000	\$250,000	-1%	96.6%	95.3%	1%	18	44	-59%
Makiki - Moiliili	1-2-4 to 1-2-9 (except 1-2-6)	492	709	-31%	382	375	2%	\$310,000	\$300,000	3%	95.4%	94.7%	1%	30	39	-23%
Mililani	Selected 1-9-4 to 1-9-5	262	222	18%	215	172	25%	\$280,000	\$268,000	4%	96.6%	95.3%	1%	27	31	-13%
Monalua - Salt Lake	1-1-1	178	206	-14%	145	124	17%	\$277,000	\$283,000	-2%	95.5%	95.8%	0%	21	37	-43%
North Shore	1-5-6 to 1-6-9	39	56	-30%	26	30	-13%	\$294,000	\$226,000	30%	92.7%	90.1%	3%	80	41	95%
Pearl City - Aiea	1-9-6 to 1-9-9	246	303	-19%	211	208	1%	\$270,000	\$265,000	2%	96.4%	95.0%	1%	40	43	-7%
Wahiawa	1-7-1 to 1-7-7	16	19	-16%	9	10	-10%	\$110,000	\$125,000	-12%	88.0%	88.2%	0%	71	93	-24%
Waiialae - Kahala	1-3-5	42	45	-7%	35	31	13%	\$410,850	\$443,500	-7%	95.5%	95.3%	0%	25	22	14%
Waikiki	1-2-6	951	1182	-20%	665	622	7%	\$352,250	\$275,000	28%	99.4%	93.2%	7%	43	42	2%
Waipahu	1-9-4	159	263	-40%	108	174	-38%	\$262,000	\$260,000	1%	95.3%	95.4%	0%	28	38	-26%
Windward Coast	1-4-8 to 1-5-5	17	23	-26%	9	11	-18%	\$185,000	\$203,500	-9%	100.0%	85.7%	17%	56	83	-33%

SOURCE: Honolulu Board of REALTORS®, compiled from MLS data.

Local Market Update

September 2012

Aina Haina - Kuliouou
(1-3-6 to 1-3-8)

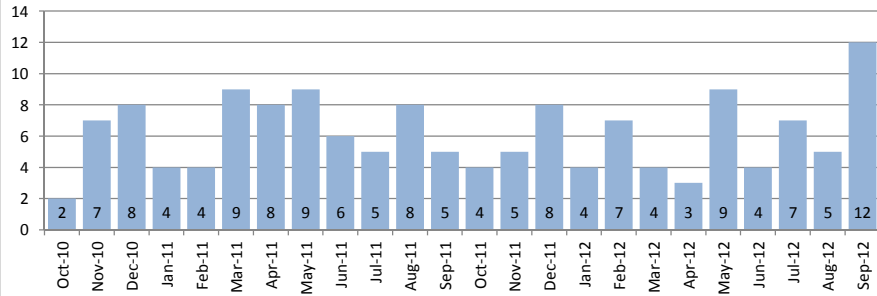


September 2012

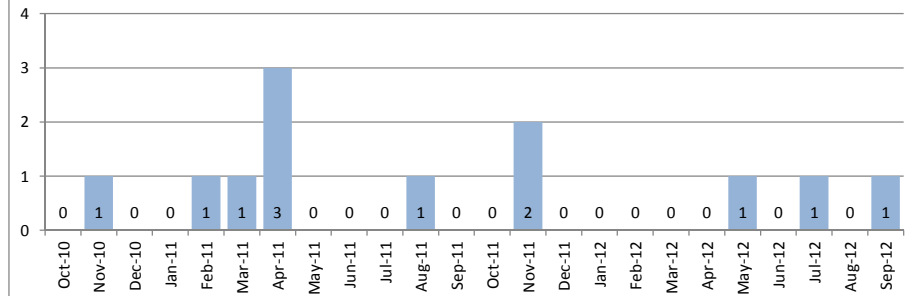
Single Family Homes	September			Year to Date		
	2012	2011	Change	2012	2011	Change
New Listings	7	5	40%	87	94	-7%
Closed Sales	12	5	140%	56	58	-3%
Median Sales Price	\$1,075,000	\$1,075,000	0%	\$967,500	\$1,250,000	-23%
Percent of Original List Price Received	102.4%	91.6%	12%	97.6%	92.0%	6%
Median Days on Market Until Sale	34	29	17%	22	38	-42%
Inventory of Homes for Sale	42	45	-7%	--	--	--

Condos	September			Year to Date		
	2012	2011	Change	2012	2011	Change
New Listings	1	0	--	5	6	-17%
Closed Sales	1	0	--	3	6	-50%
Median Sales Price	\$510,000	\$0	--	\$510,000	\$545,000	-6%
Percent of Original List Price Received	98.1%	0.0%	--	100.0%	97.9%	2%
Median Days on Market Until Sale	181	0	--	42	20	110%
Inventory of Homes for Sale	3	2	50%	--	--	--

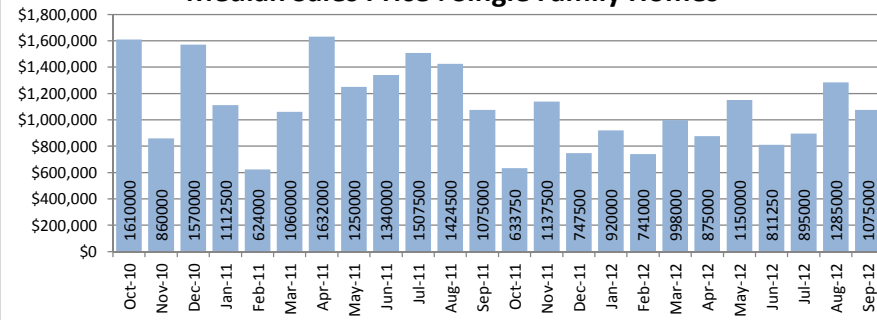
Closed Sales : Single Family Homes



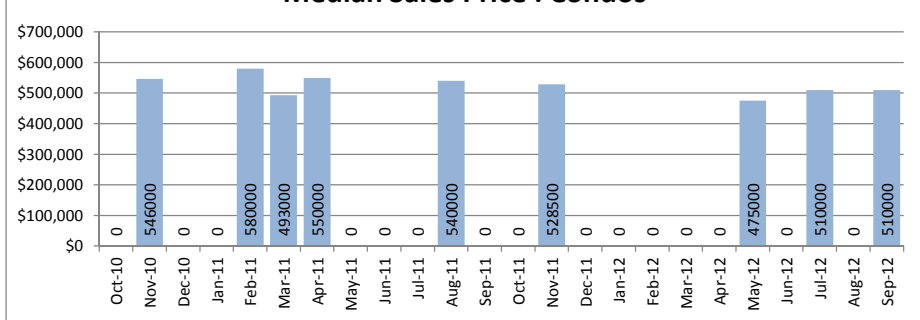
Closed Sales : Condos



Median Sales Price : Single Family Homes



Median Sales Price : Condos



SOURCE: Honolulu Board of REALTORS® , compiled from MLS data.

Local Market Update

September 2012

Ala Moana - Kakaako
(1-2-3)

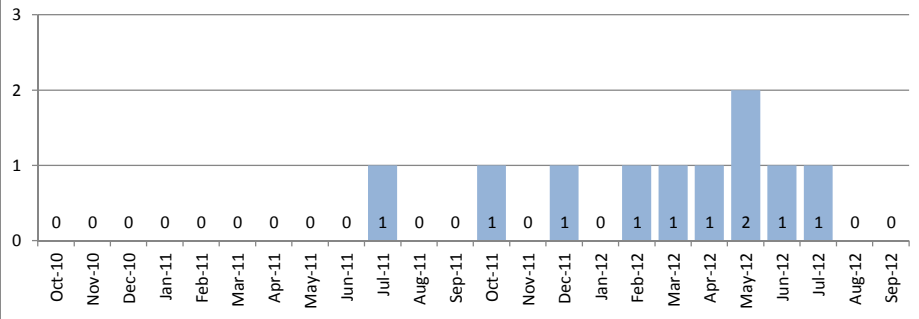


September 2012

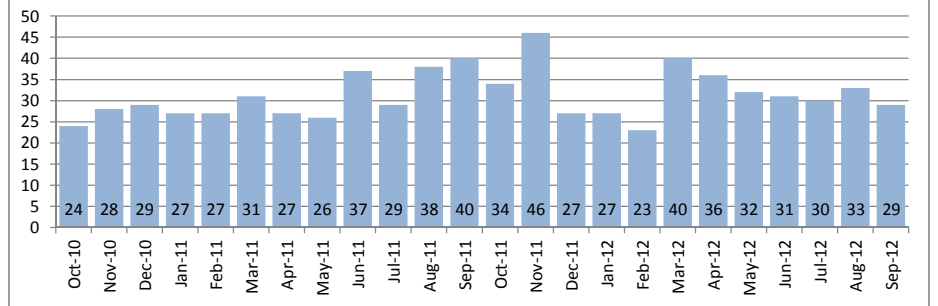
Single Family Homes	September			Year to Date		
	2012	2011	Change	2012	2011	Change
New Listings	2	0	--	8	6	33%
Closed Sales	0	0	--	7	1	600%
Median Sales Price	\$0	\$0	--	\$799,900	\$566,000	41%
Percent of Original List Price Received	0.0%	0.0%	--	94.2%	95.1%	-1%
Median Days on Market Until Sale	0	0	--	52	86	-40%
Inventory of Homes for Sale	2	4	-50%	--	--	--

Condos	September			Year to Date		
	2012	2011	Change	2012	2011	Change
New Listings	39	57	-32%	338	484	-30%
Closed Sales	29	40	-28%	293	285	3%
Median Sales Price	\$289,000	\$346,500	-17%	\$340,000	\$349,000	-3%
Percent of Original List Price Received	96.7%	95.1%	2%	96.3%	94.6%	2%
Median Days on Market Until Sale	30	34	-12%	39	45	-13%
Inventory of Homes for Sale	130	184	-29%	--	--	--

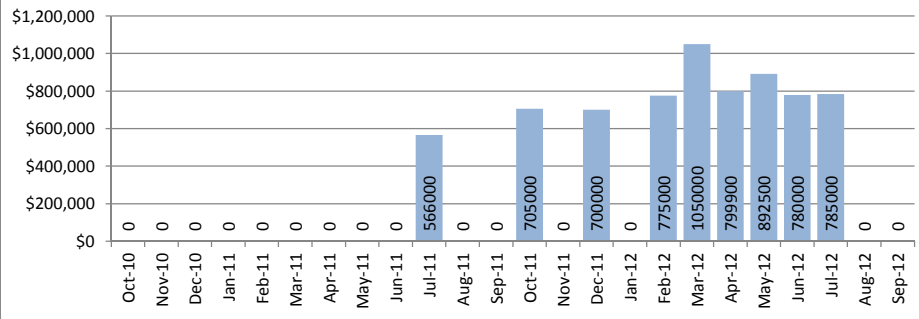
Closed Sales : Single Family Homes



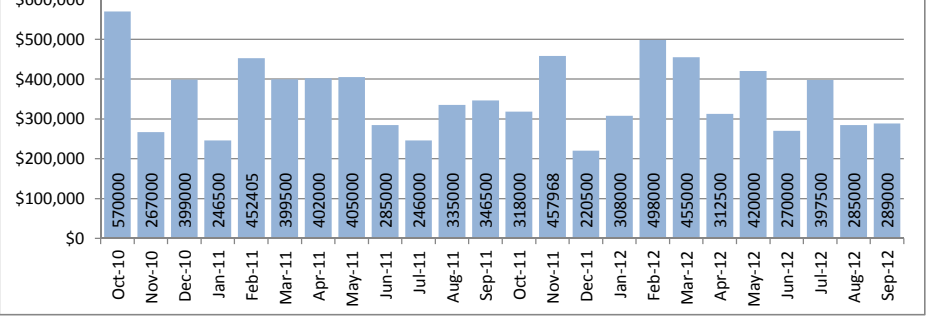
Closed Sales : Condos



Median Sales Price : Single Family Homes



Median Sales Price : Condos



SOURCE: Honolulu Board of REALTORS® , compiled from MLS data.

Local Market Update

September 2012

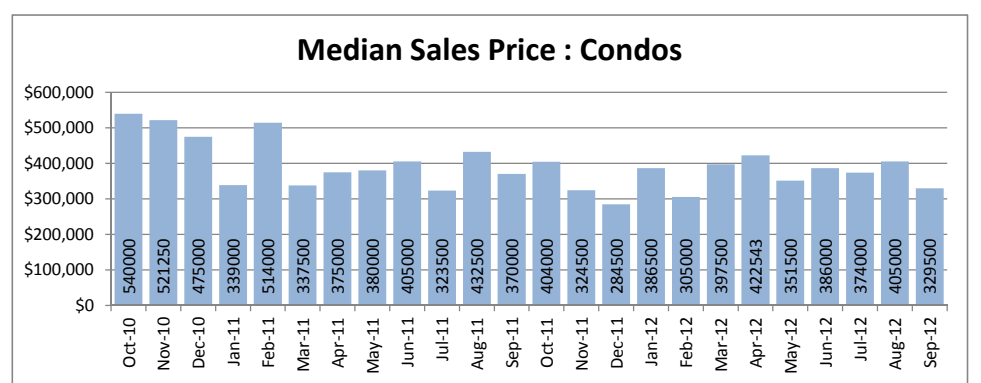
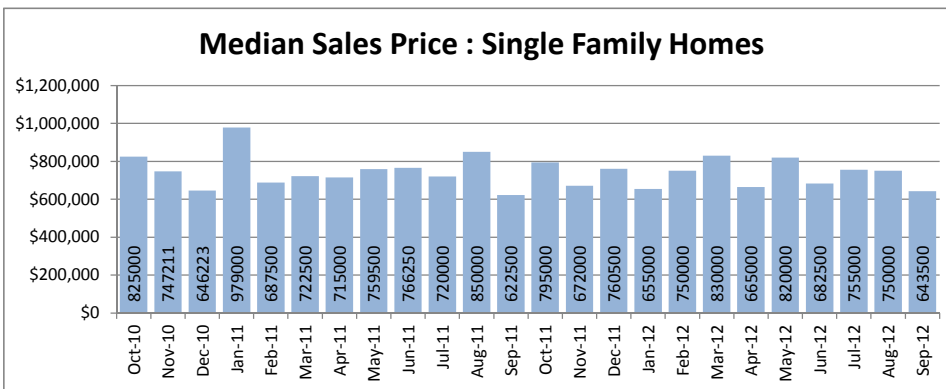
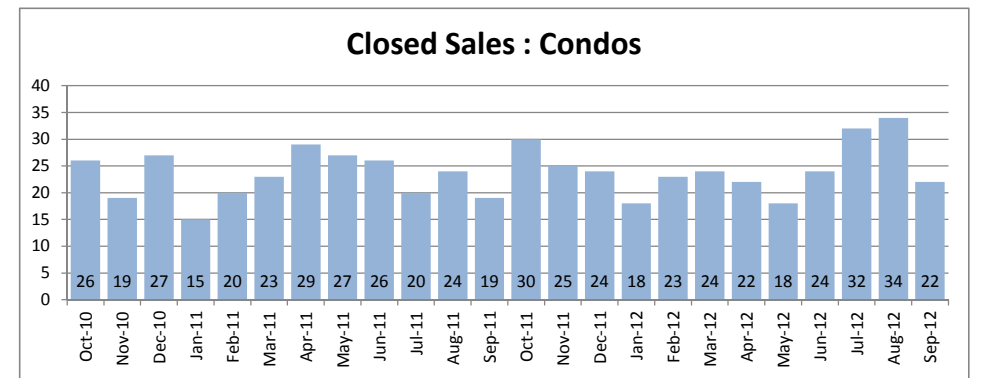
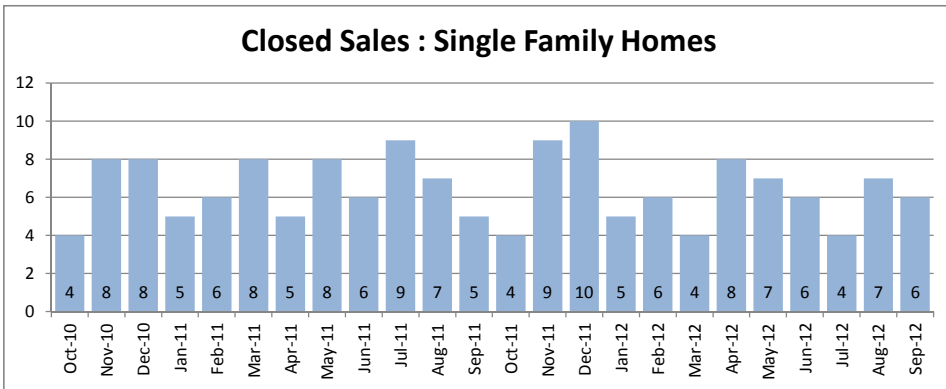


Downtown - Nuuanu
1-1-8 to 1-2-2

September 2012

Single Family Homes	September			Year to Date		
	2012	2011	Change	2012	2011	Change
New Listings	10	7	43%	89	113	-21%
Closed Sales	6	5	20%	56	58	-3%
Median Sales Price	\$643,500	\$622,500	3%	\$724,500	\$756,000	-4%
Percent of Original List Price Received	98.5%	96.7%	2%	94.5%	93.4%	1%
Median Days on Market Until Sale	22	26	-15%	33	44	-25%
Inventory of Homes for Sale	39	53	-26%	--	--	--

Condos	September			Year to Date		
	2012	2011	Change	2012	2011	Change
New Listings	34	41	-17%	275	394	-30%
Closed Sales	22	19	16%	224	208	8%
Median Sales Price	\$329,500	\$370,000	-11%	\$372,500	\$379,000	-2%
Percent of Original List Price Received	94.8%	92.8%	2%	96.1%	94.1%	2%
Median Days on Market Until Sale	26	40	-35%	35	42	-17%
Inventory of Homes for Sale	105	151	-30%	--	--	--



SOURCE: Honolulu Board of REALTORS® , compiled from MLS data.

Local Market Update

September 2012

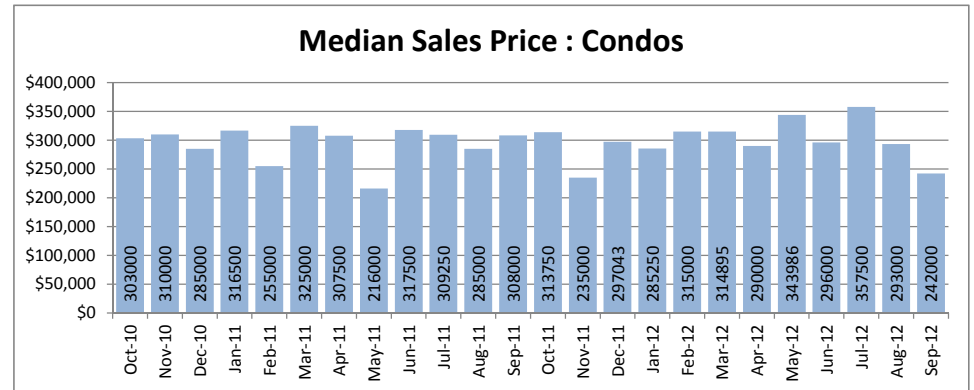
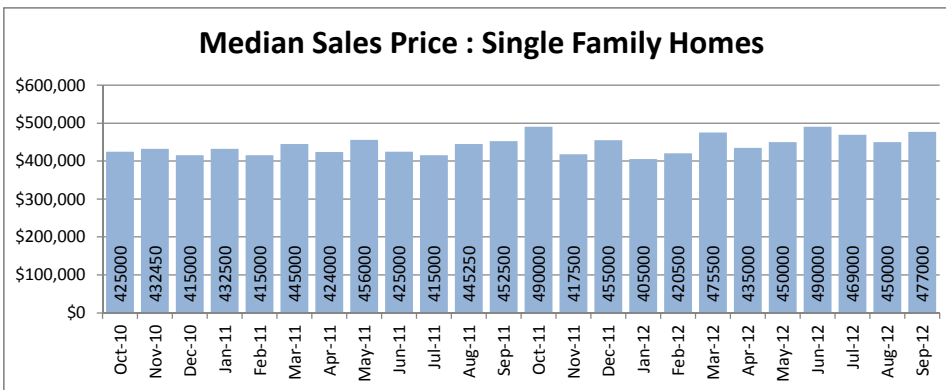
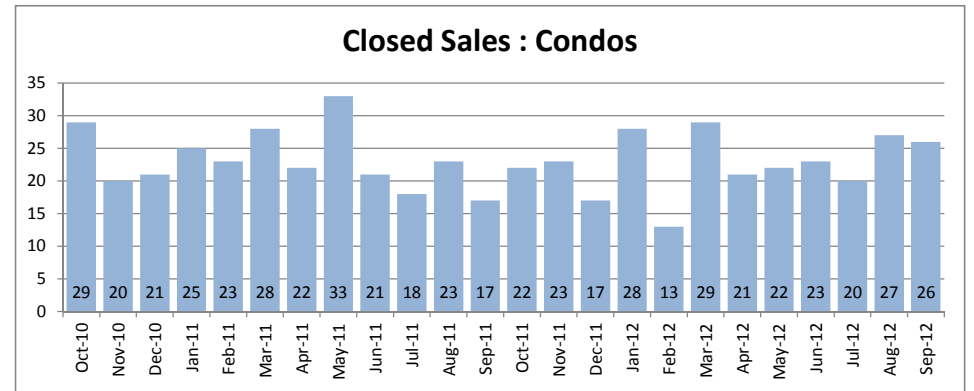
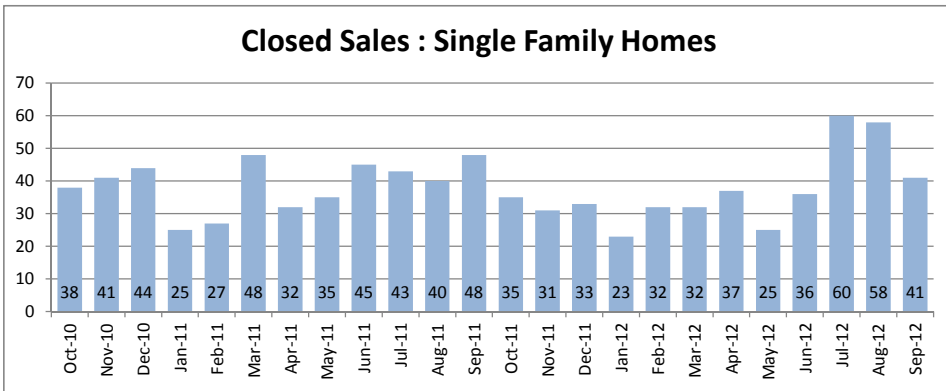


Ewa Plain
1-9-1

September 2012

Single Family Homes	September			Year to Date		
	2012	2011	Change	2012	2011	Change
New Listings	53	45	18%	447	490	-9%
Closed Sales	41	48	-15%	362	348	4%
Median Sales Price	\$477,000	\$452,500	5%	\$460,000	\$435,000	6%
Percent of Original List Price Received	98.9%	96.9%	2%	97.4%	97.8%	0%
Median Days on Market Until Sale	32	29	10%	28	31	-10%
Inventory of Homes for Sale	126	116	9%	--	--	--

Condos	September			Year to Date		
	2012	2011	Change	2012	2011	Change
New Listings	39	34	15%	242	266	-9%
Closed Sales	26	17	53%	212	210	1%
Median Sales Price	\$242,000	\$308,000	-21%	\$307,500	\$305,000	1%
Percent of Original List Price Received	100.9%	98.4%	3%	97.6%	98.6%	-1%
Median Days on Market Until Sale	28	43	-35%	26	39	-33%
Inventory of Homes for Sale	84	71	18%	--	--	--



SOURCE: Honolulu Board of REALTORS® , compiled from MLS data.

Local Market Update

September 2012

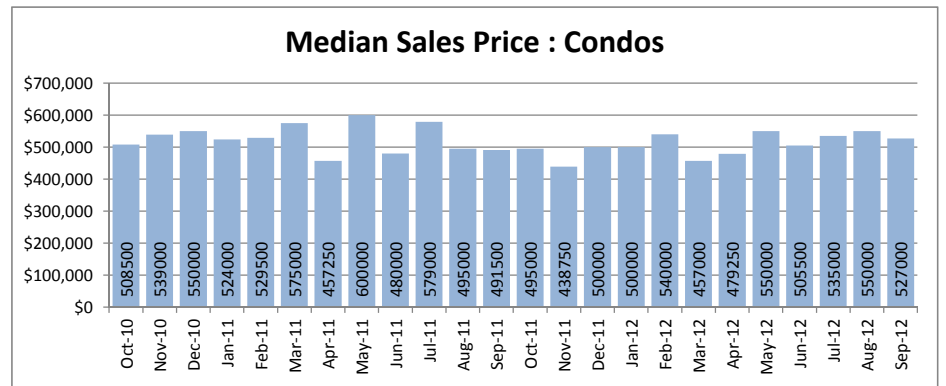
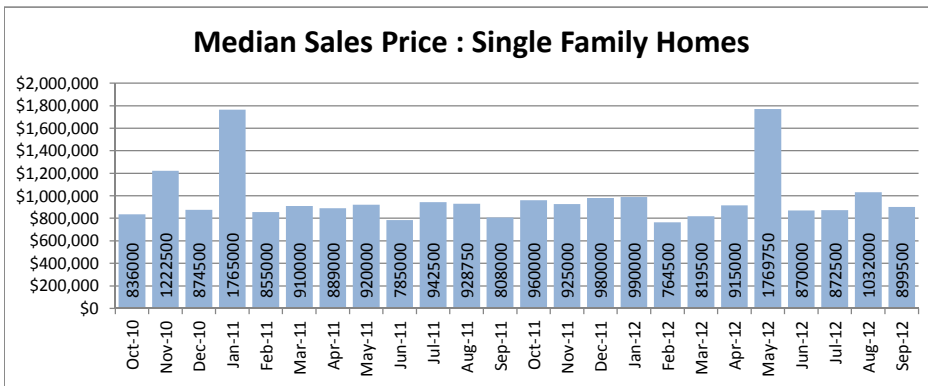
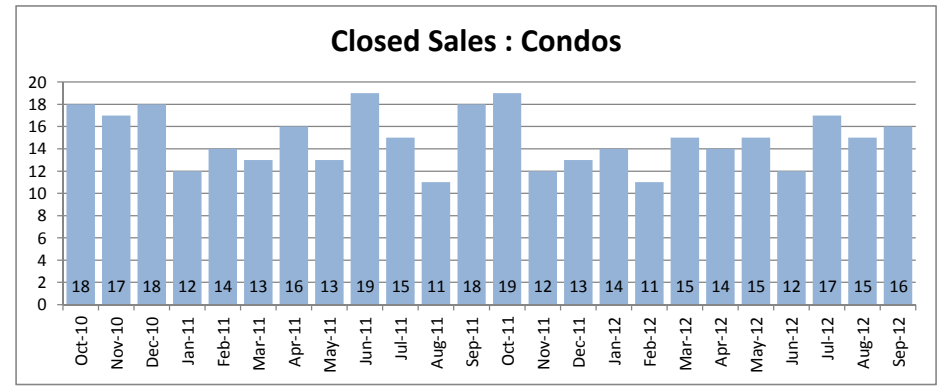
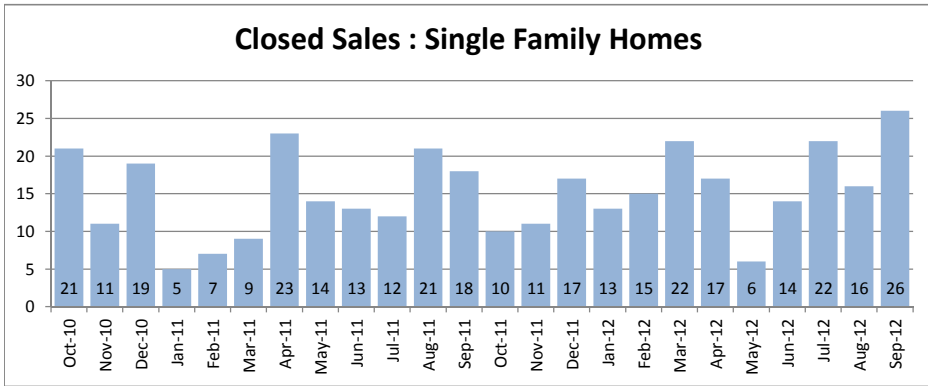


Hawaii Kai
1-3-9

September 2012

Single Family Homes	September			Year to Date		
	2012	2011	Change	2012	2011	Change
New Listings	17	25	-32%	187	247	-24%
Closed Sales	26	18	44%	152	122	25%
Median Sales Price	\$899,500	\$808,000	11%	\$880,000	\$879,000	0%
Percent of Original List Price Received	99.0%	95.4%	4%	94.4%	96.4%	-2%
Median Days on Market Until Sale	39	23	70%	33	22	50%
Inventory of Homes for Sale	86	91	-5%	--	--	--

Condos	September			Year to Date		
	2012	2011	Change	2012	2011	Change
New Listings	14	20	-30%	146	229	-36%
Closed Sales	16	18	-11%	131	134	-2%
Median Sales Price	\$527,000	\$491,500	7%	\$523,000	\$517,000	1%
Percent of Original List Price Received	99.1%	95.7%	4%	96.9%	95.9%	1%
Median Days on Market Until Sale	49	34	44%	41	35	17%
Inventory of Homes for Sale	46	84	-45%	--	--	--



SOURCE: Honolulu Board of REALTORS®, compiled from MLS data.

Local Market Update

September 2012



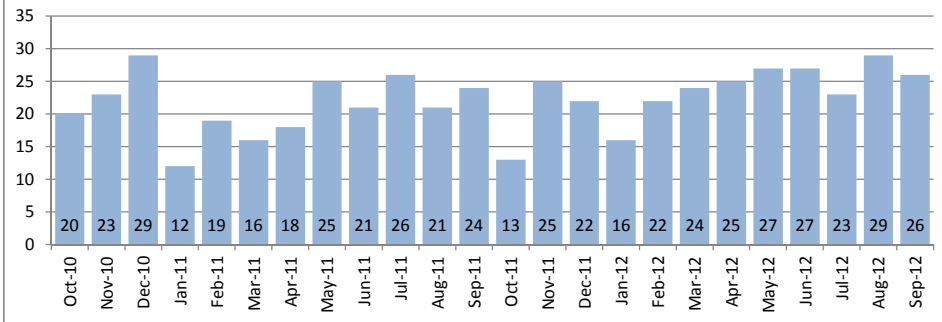
Kailua - Waimanalo
1-4-1 to Selected 1-4-4

September 2012

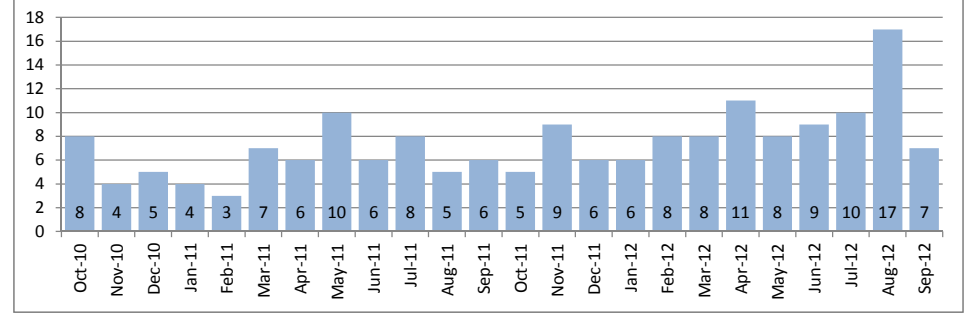
Single Family Homes	September			Year to Date		
	2012	2011	Change	2012	2011	Change
New Listings	27	45	-40%	247	338	-27%
Closed Sales	26	24	8%	219	183	20%
Median Sales Price	\$832,000	\$730,000	14%	\$795,000	\$790,000	1%
Percent of Original List Price Received	96.5%	95.4%	1%	96.4%	94.8%	2%
Median Days on Market Until Sale	19	29	-34%	31	35	-11%
Inventory of Homes for Sale	94	126	-25%	--	--	--

Condos	September			Year to Date		
	2012	2011	Change	2012	2011	Change
New Listings	12	13	-8%	92	87	6%
Closed Sales	7	6	17%	87	56	55%
Median Sales Price	\$505,000	\$352,500	43%	\$415,000	\$376,000	10%
Percent of Original List Price Received	96.2%	98.5%	-2%	95.4%	96.4%	-1%
Median Days on Market Until Sale	19	18	6%	22	36	-39%
Inventory of Homes for Sale	25	26	-4%	--	--	--

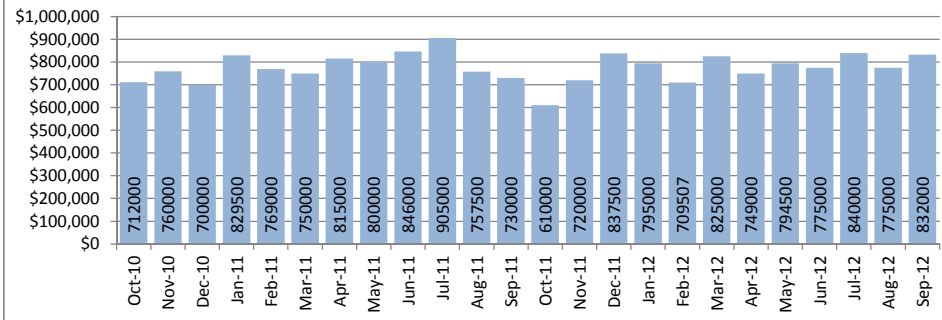
Closed Sales : Single Family Homes



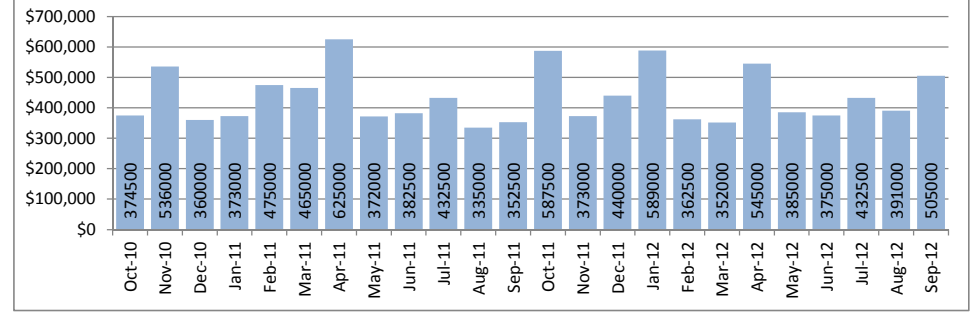
Closed Sales : Condos



Median Sales Price : Single Family Homes



Median Sales Price : Condos



SOURCE: Honolulu Board of REALTORS®, compiled from MLS data.

Local Market Update

September 2012

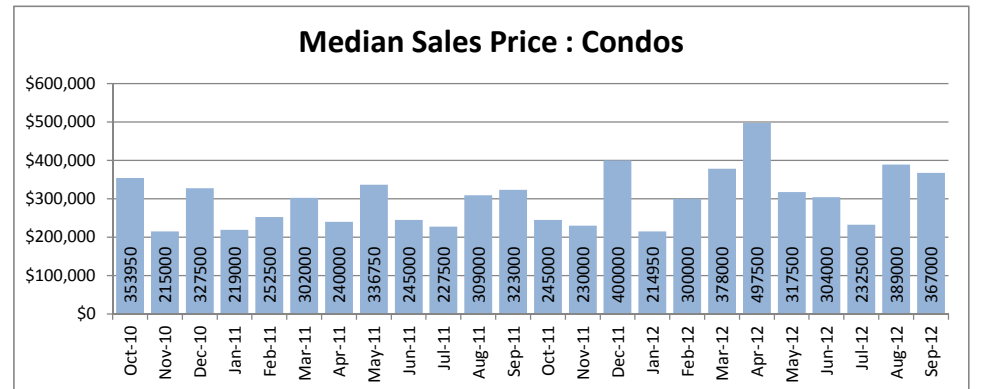
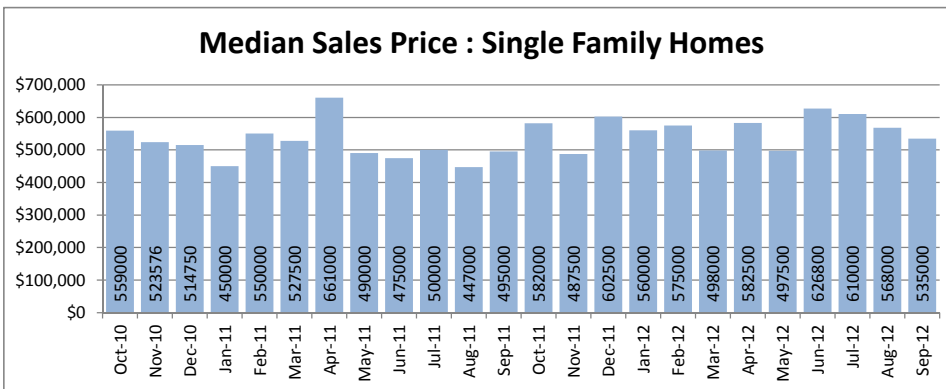
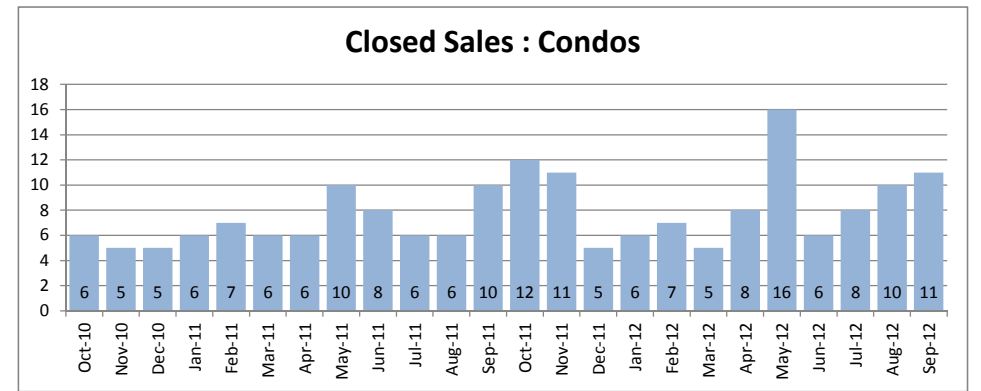
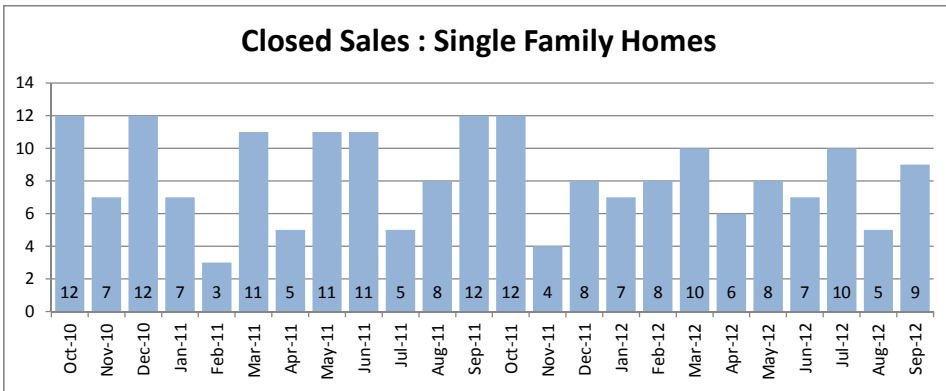


Kalihi - Palama
1-1-2 to 1-1-7

September 2012

Single Family Homes	September			Year to Date		
	2012	2011	Change	2012	2011	Change
New Listings	16	13	23%	103	145	-29%
Closed Sales	9	12	-25%	72	73	-1%
Median Sales Price	\$535,000	\$495,000	8%	\$560,000	\$495,000	13%
Percent of Original List Price Received	97.4%	95.6%	2%	94.7%	94.6%	0%
Median Days on Market Until Sale	12	36	-67%	19	34	-44%
Inventory of Homes for Sale	37	66	-44%	--	--	--

Condos	September			Year to Date		
	2012	2011	Change	2012	2011	Change
New Listings	9	16	-44%	88	120	-27%
Closed Sales	11	10	10%	77	66	17%
Median Sales Price	\$367,000	\$323,000	14%	\$320,000	\$270,000	19%
Percent of Original List Price Received	95.3%	95.3%	0%	94.4%	94.5%	0%
Median Days on Market Until Sale	22	36	-39%	34	36	-6%
Inventory of Homes for Sale	33	35	-6%	--	--	--



SOURCE: Honolulu Board of REALTORS® , compiled from MLS data.

Local Market Update

September 2012

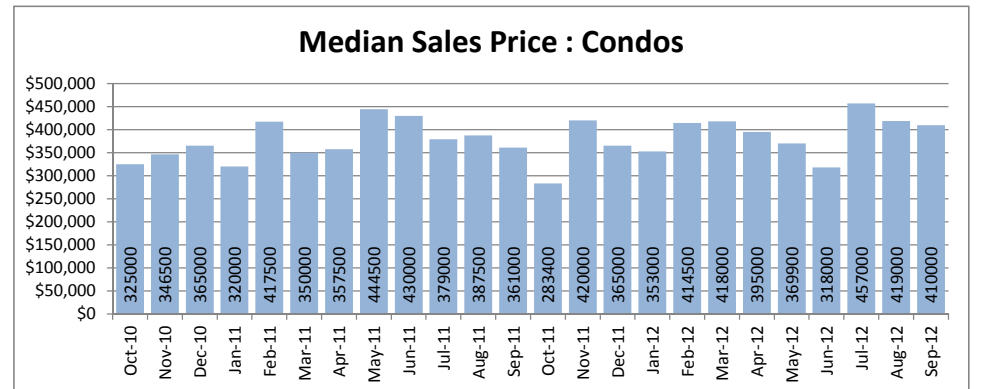
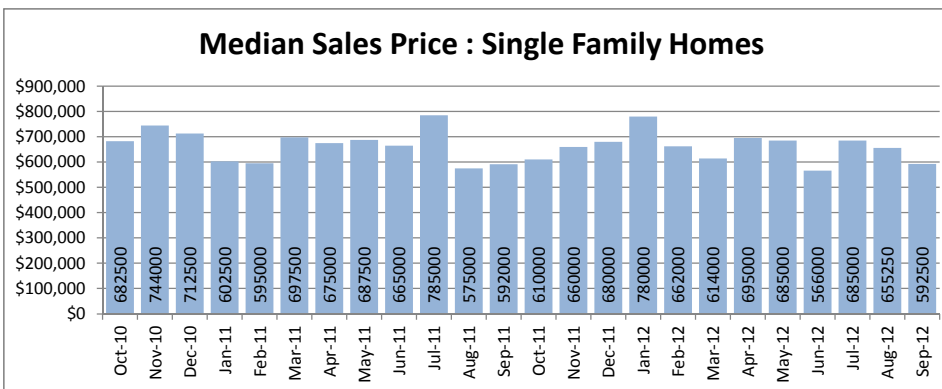
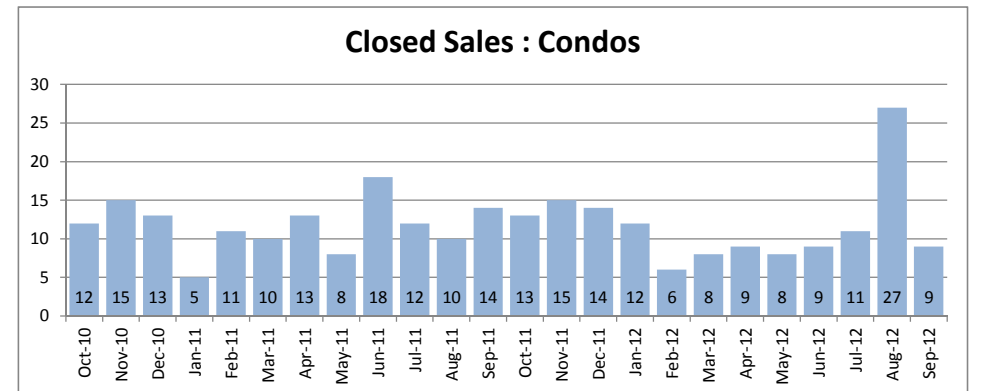
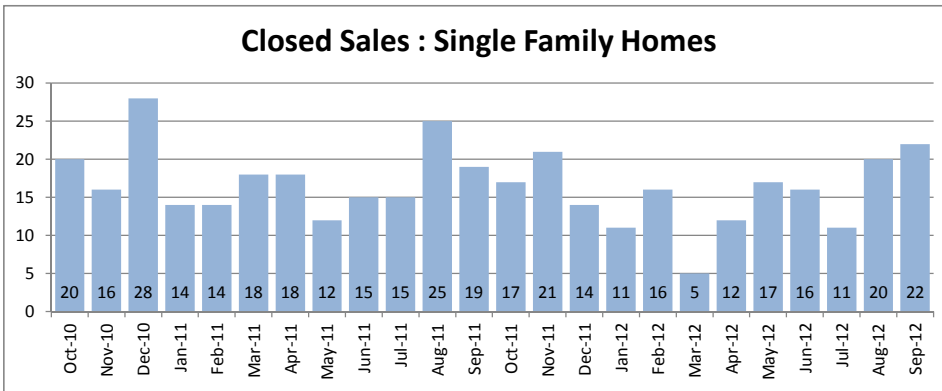


Kaneohe
Selected 1-4-4 to 1-4-7

September 2012

Single Family Homes	September			Year to Date		
	2012	2011	Change	2012	2011	Change
New Listings	21	22	-5%	193	281	-31%
Closed Sales	22	19	16%	133	150	-11%
Median Sales Price	\$592,500	\$592,000	0%	\$655,500	\$650,000	1%
Percent of Original List Price Received	103.9%	93.4%	11%	99.5%	94.9%	5%
Median Days on Market Until Sale	19	57	-67%	28	32	-13%
Inventory of Homes for Sale	83	116	-28%	--	--	--

Condos	September			Year to Date		
	2012	2011	Change	2012	2011	Change
New Listings	20	13	54%	135	177	-24%
Closed Sales	9	14	-36%	100	106	-6%
Median Sales Price	\$410,000	\$361,000	14%	\$409,500	\$374,000	9%
Percent of Original List Price Received	100.0%	95.7%	4%	99.9%	94.7%	5%
Median Days on Market Until Sale	15	49	-69%	22	61	-64%
Inventory of Homes for Sale	40	62	-35%	--	--	--



SOURCE: Honolulu Board of REALTORS®, compiled from MLS data.

Local Market Update

September 2012

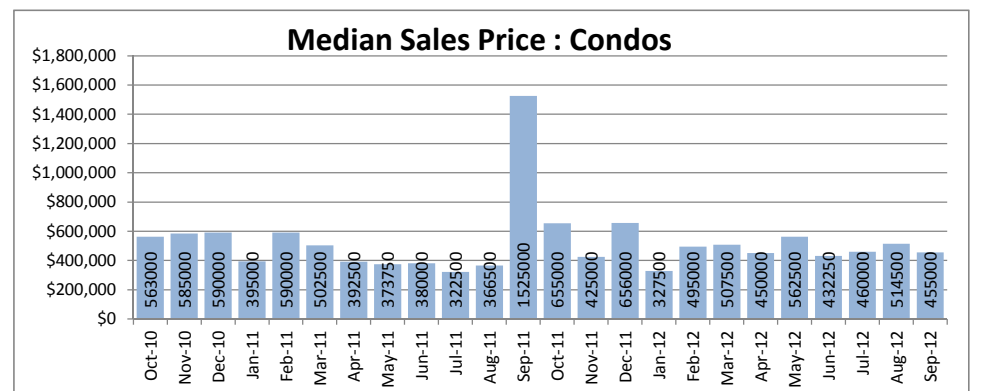
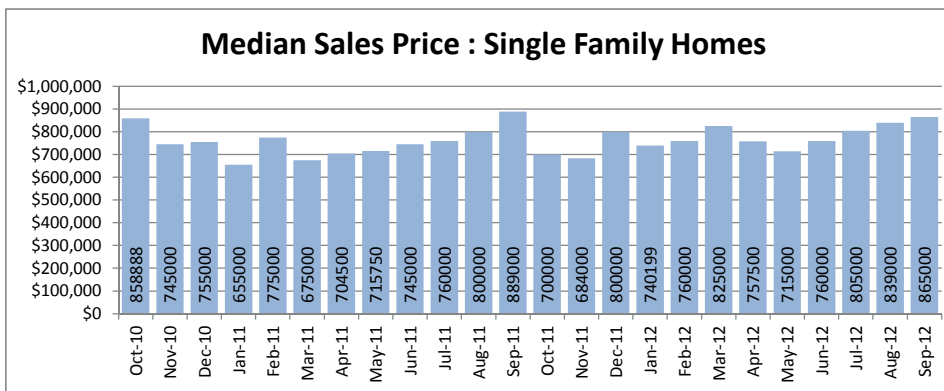
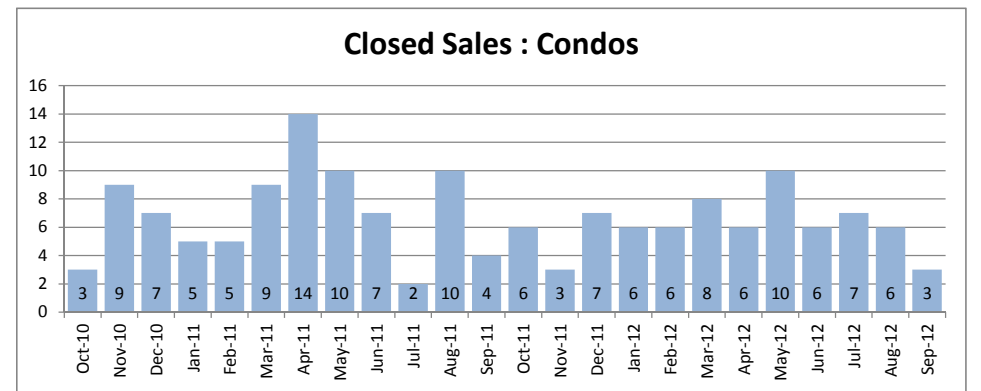
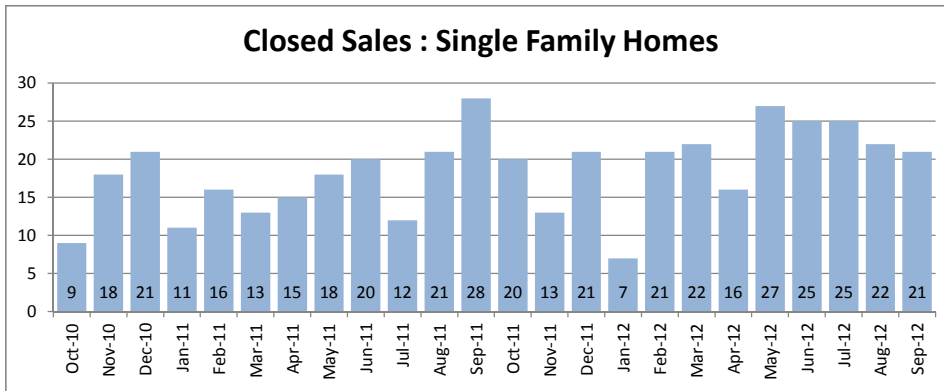


Kapahulu - Diamond Head
1-3-1 to 1-3-4

September 2012

Single Family Homes	September			Year to Date		
	2012	2011	Change	2012	2011	Change
New Listings	25	26	-4%	206	254	-19%
Closed Sales	21	28	-25%	187	156	20%
Median Sales Price	\$865,000	\$889,000	-3%	\$793,000	\$749,500	6%
Percent of Original List Price Received	98.9%	95.2%	4%	96.1%	94.4%	2%
Median Days on Market Until Sale	10	22	-55%	29	29	0%
Inventory of Homes for Sale	80	96	-17%	--	--	--

Condos	September			Year to Date		
	2012	2011	Change	2012	2011	Change
New Listings	6	7	-14%	93	120	-23%
Closed Sales	3	4	-25%	59	67	-12%
Median Sales Price	\$455,000	\$1,525,000	-70%	\$465,000	\$432,500	8%
Percent of Original List Price Received	91.4%	95.1%	-4%	93.4%	94.7%	-1%
Median Days on Market Until Sale	42	26	62%	38	76	-50%
Inventory of Homes for Sale	56	64	-13%	--	--	--



SOURCE: Honolulu Board of REALTORS®, compiled from MLS data.

Local Market Update

September 2012

Makaha - Nanakuli

1-8-1 to 1-8-9

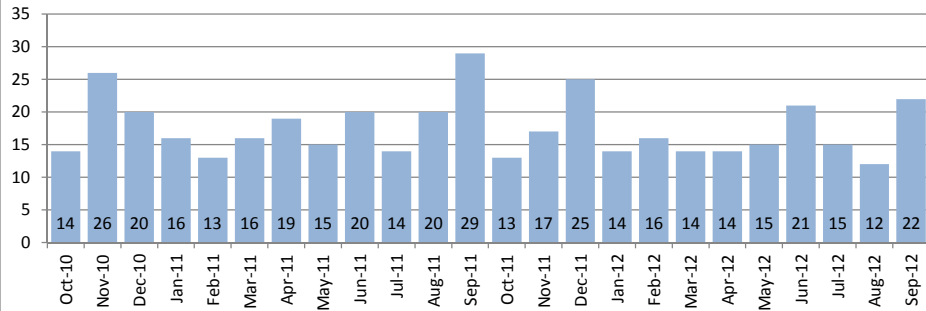


September 2012

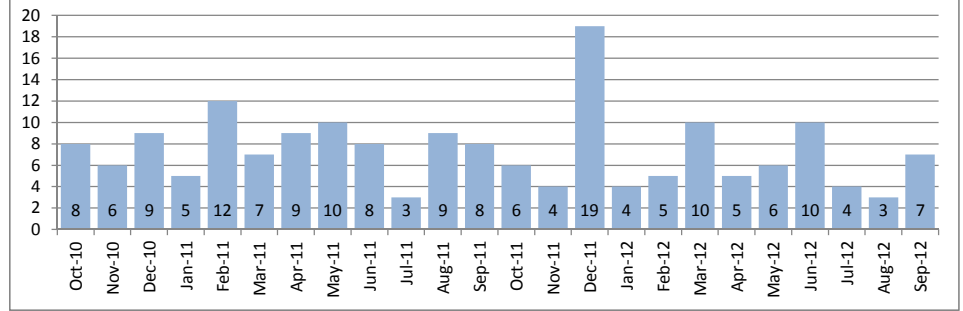
Single Family Homes	September			Year to Date		
	2012	2011	Change	2012	2011	Change
New Listings	31	25	24%	243	318	-24%
Closed Sales	22	29	-24%	153	180	-15%
Median Sales Price	\$308,000	\$295,000	4%	\$310,000	\$275,000	13%
Percent of Original List Price Received	94.8%	96.0%	-1%	93.9%	94.2%	0%
Median Days on Market Until Sale	26	22	18%	31	30	3%
Inventory of Homes for Sale	125	123	2%	--	--	--

Condos	September			Year to Date		
	2012	2011	Change	2012	2011	Change
New Listings	14	20	-30%	106	140	-24%
Closed Sales	7	8	-13%	55	72	-24%
Median Sales Price	\$90,000	\$80,000	13%	\$90,000	\$89,450	1%
Percent of Original List Price Received	90.9%	91.0%	0%	90.9%	91.7%	-1%
Median Days on Market Until Sale	44	27	63%	52	38	37%
Inventory of Homes for Sale	60	70	-14%	--	--	--

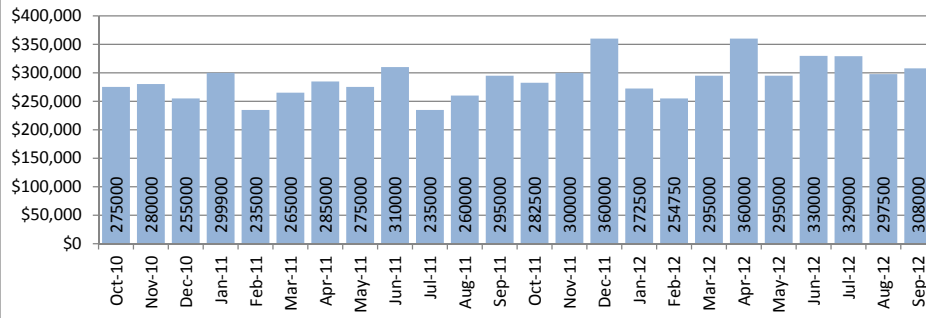
Closed Sales : Single Family Homes



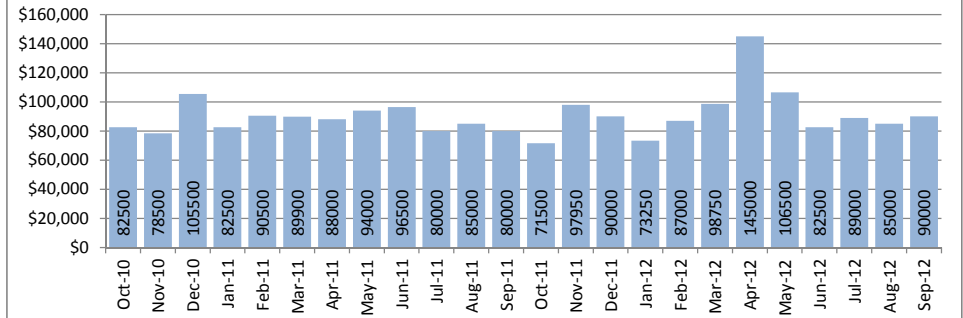
Closed Sales : Condos



Median Sales Price : Single Family Homes



Median Sales Price : Condos



SOURCE: Honolulu Board of REALTORS® , compiled from MLS data.

Local Market Update

September 2012

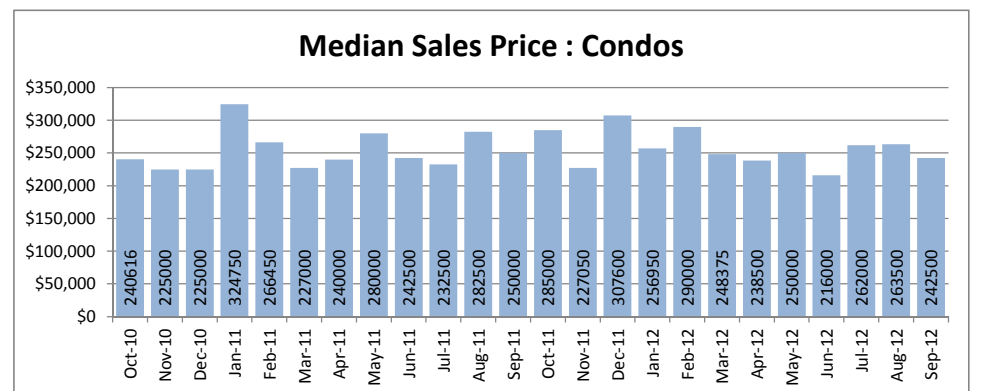
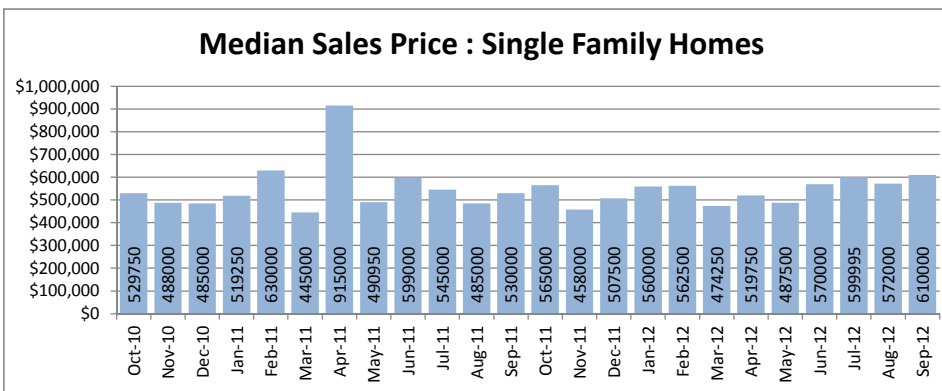
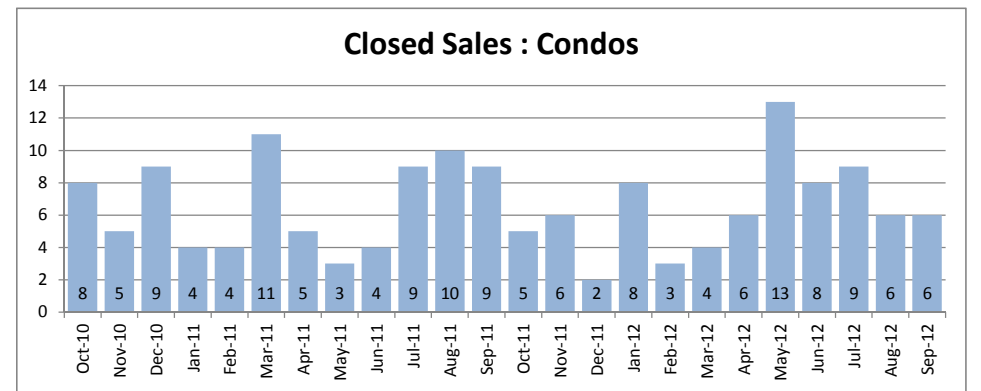
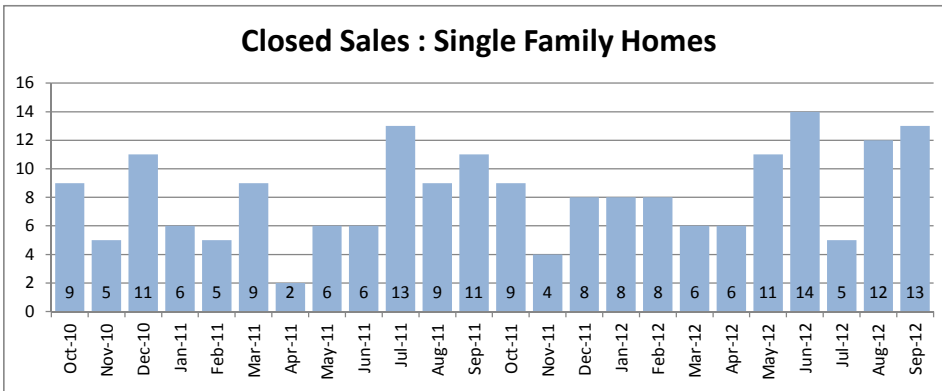


Makakilo
1-9-2 to 1-9-3

September 2012

Single Family Homes	September			Year to Date		
	2012	2011	Change	2012	2011	Change
New Listings	12	10	20%	113	131	-14%
Closed Sales	13	11	18%	86	70	23%
Median Sales Price	\$610,000	\$530,000	15%	\$572,000	\$510,000	12%
Percent of Original List Price Received	98.2%	97.5%	1%	97.8%	95.9%	2%
Median Days on Market Until Sale	39	36	8%	51	32	59%
Inventory of Homes for Sale	53	50	6%	--	--	--

Condos	September			Year to Date		
	2012	2011	Change	2012	2011	Change
New Listings	7	7	0%	75	83	-10%
Closed Sales	6	9	-33%	64	59	8%
Median Sales Price	\$242,500	\$250,000	-3%	\$247,000	\$250,000	-1%
Percent of Original List Price Received	101.1%	95.0%	6%	96.6%	95.3%	1%
Median Days on Market Until Sale	10	23	-57%	18	44	-59%
Inventory of Homes for Sale	14	6	133%	--	--	--



SOURCE: Honolulu Board of REALTORS® , compiled from MLS data.

Local Market Update

September 2012



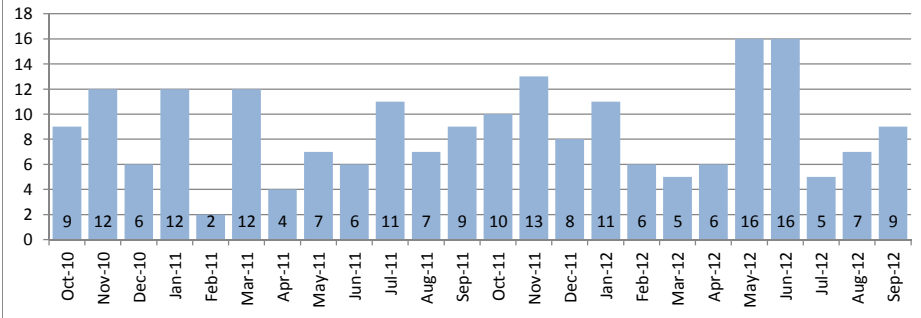
Makiki - Moiliili
1-2-4 to 1-2-9 (except 1-2-6)

September 2012

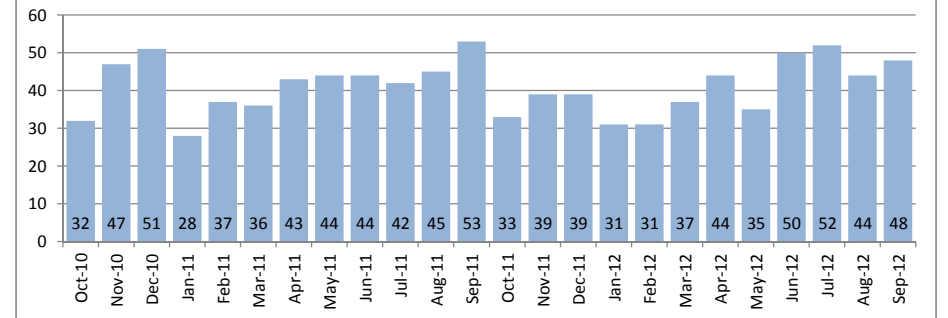
Single Family Homes	September			Year to Date		
	2012	2011	Change	2012	2011	Change
New Listings	10	16	-38%	97	142	-32%
Closed Sales	9	9	0%	82	70	17%
Median Sales Price	\$985,000	\$830,000	19%	\$910,500	\$877,500	4%
Percent of Original List Price Received	98.6%	94.4%	4%	94.8%	92.6%	2%
Median Days on Market Until Sale	21	49	-57%	21	41	-49%
Inventory of Homes for Sale	40	53	-25%	--	--	--

Condos	September			Year to Date		
	2012	2011	Change	2012	2011	Change
New Listings	62	72	-14%	492	709	-31%
Closed Sales	48	53	-9%	382	375	2%
Median Sales Price	\$347,500	\$329,000	6%	\$310,000	\$300,000	3%
Percent of Original List Price Received	99.4%	94.3%	5%	95.4%	94.7%	1%
Median Days on Market Until Sale	22	37	-41%	30	39	-23%
Inventory of Homes for Sale	175	223	-22%	--	--	--

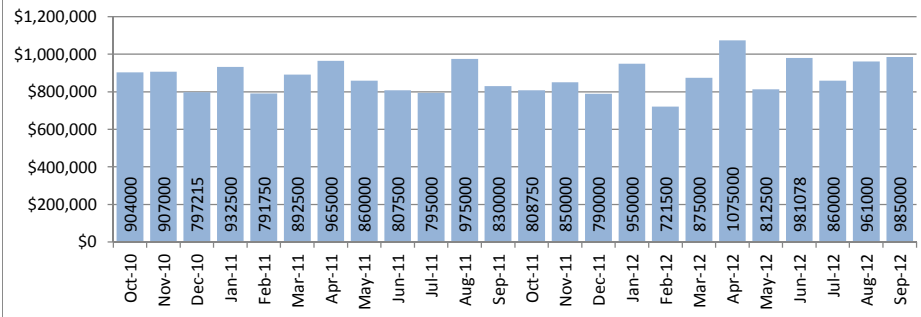
Closed Sales : Single Family Homes



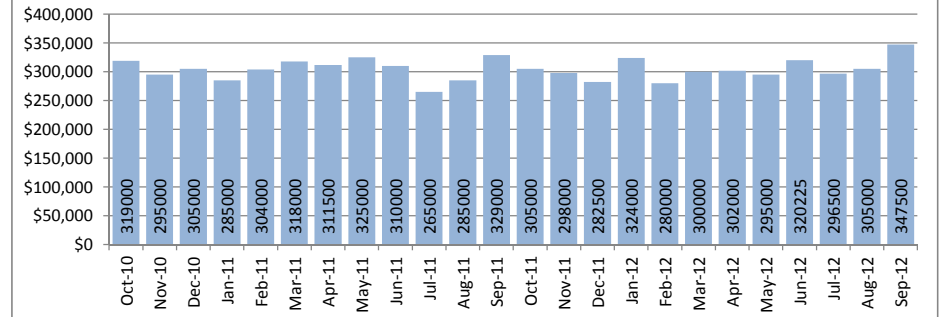
Closed Sales : Condos



Median Sales Price : Single Family Homes



Median Sales Price : Condos



SOURCE: Honolulu Board of REALTORS® , compiled from MLS data.

Local Market Update

September 2012

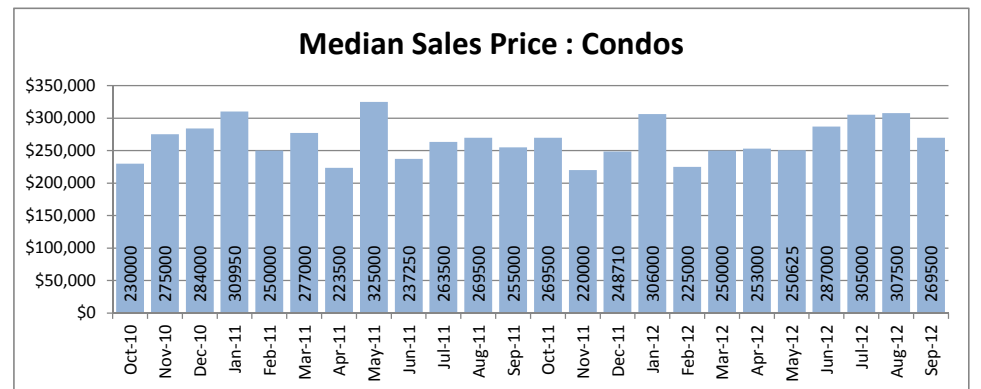
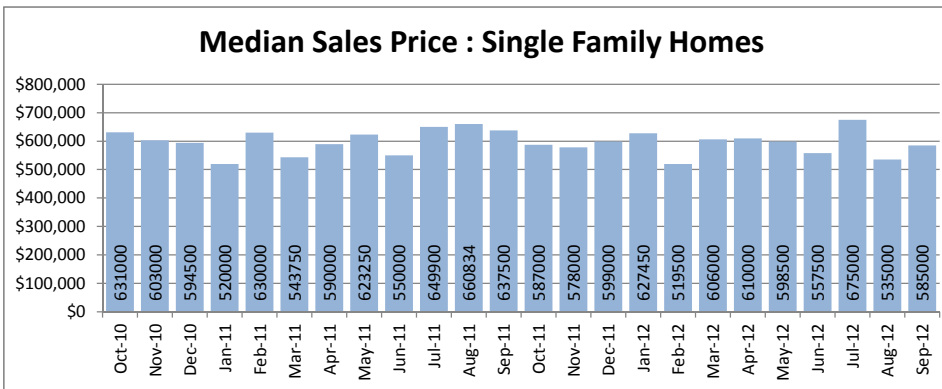
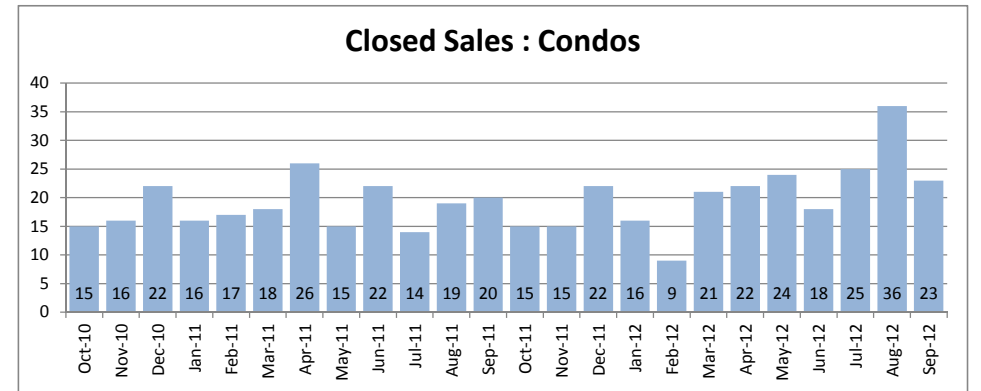
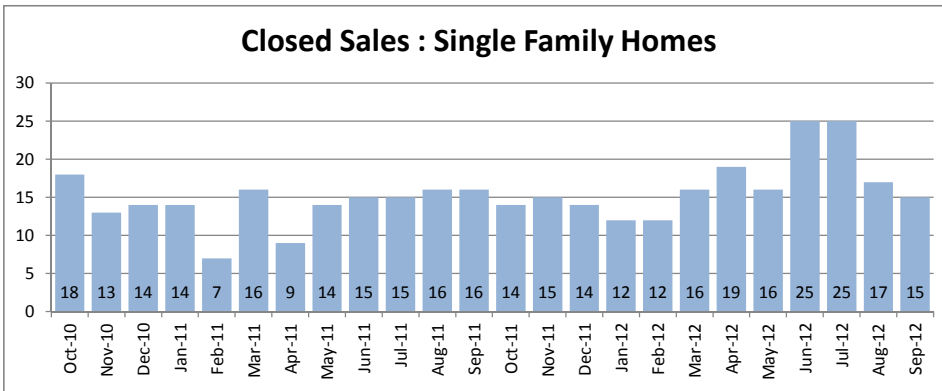


Mililani
Selected 1-9-4 to 1-9-5

September 2012

Single Family Homes	September			Year to Date		
	2012	2011	Change	2012	2011	Change
New Listings	21	15	40%	197	209	-6%
Closed Sales	15	16	-6%	179	124	44%
Median Sales Price	\$585,000	\$637,500	-8%	\$590,000	\$592,500	0%
Percent of Original List Price Received	95.1%	97.3%	-2%	96.7%	96.7%	0%
Median Days on Market Until Sale	26	28	-7%	31	35	-11%
Inventory of Homes for Sale	51	65	-22%	--	--	--

Condos	September			Year to Date		
	2012	2011	Change	2012	2011	Change
New Listings	23	15	53%	262	222	18%
Closed Sales	23	20	15%	215	172	25%
Median Sales Price	\$269,500	\$255,000	6%	\$280,000	\$268,000	4%
Percent of Original List Price Received	94.1%	97.2%	-3%	96.6%	95.3%	1%
Median Days on Market Until Sale	30	25	20%	27	31	-13%
Inventory of Homes for Sale	68	62	10%	--	--	--



SOURCE: Honolulu Board of REALTORS® , compiled from MLS data.

Local Market Update

September 2012

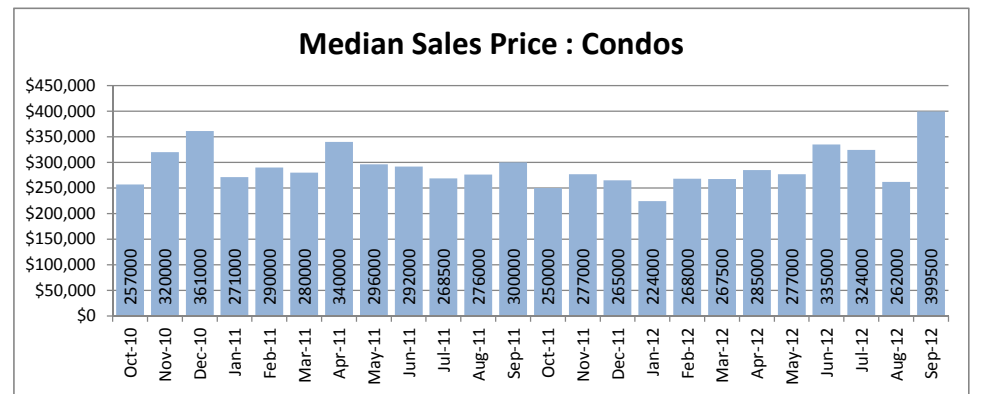
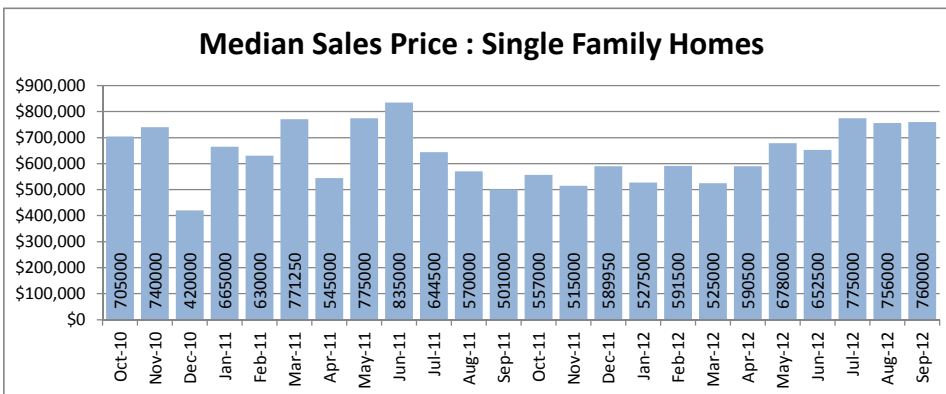
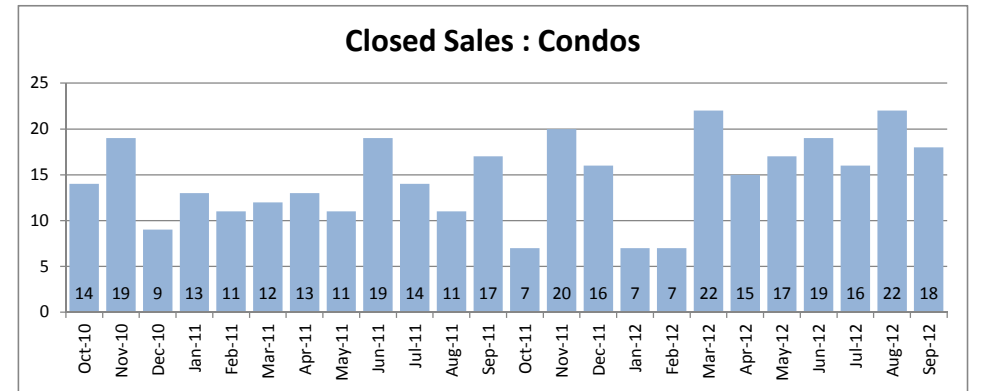
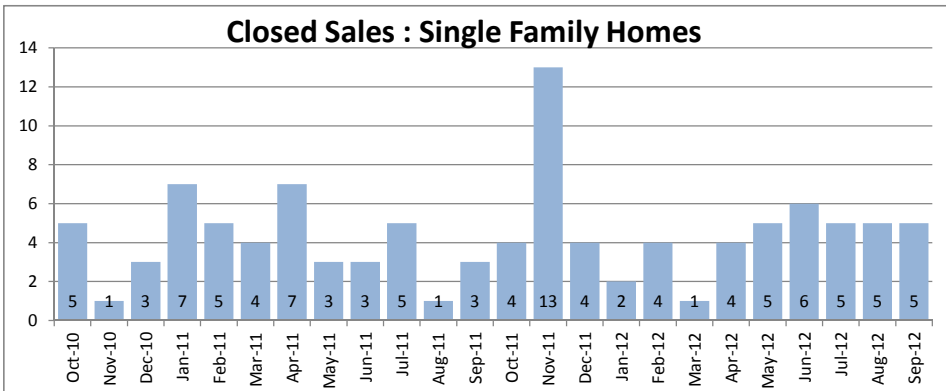


Monalua - Salt Lake
1-1-1

September 2012

Single Family Homes	September			Year to Date		
	2012	2011	Change	2012	2011	Change
New Listings	3	7	-57%	41	63	-35%
Closed Sales	5	3	67%	37	38	-3%
Median Sales Price	\$760,000	\$501,000	52%	\$700,500	\$620,000	13%
Percent of Original List Price Received	98.7%	97.7%	1%	96.6%	95.0%	2%
Median Days on Market Until Sale	39	20	95%	22	28	-21%
Inventory of Homes for Sale	17	29	-41%	--	--	--

Condos	September			Year to Date		
	2012	2011	Change	2012	2011	Change
New Listings	17	16	6%	178	206	-14%
Closed Sales	18	17	6%	145	124	17%
Median Sales Price	\$399,500	\$300,000	33%	\$277,000	\$283,000	-2%
Percent of Original List Price Received	100.5%	94.3%	7%	95.5%	95.8%	0%
Median Days on Market Until Sale	18	54	-67%	21	37	-43%
Inventory of Homes for Sale	45	72	-38%	--	--	--



SOURCE: Honolulu Board of REALTORS® , compiled from MLS data.

Local Market Update

September 2012

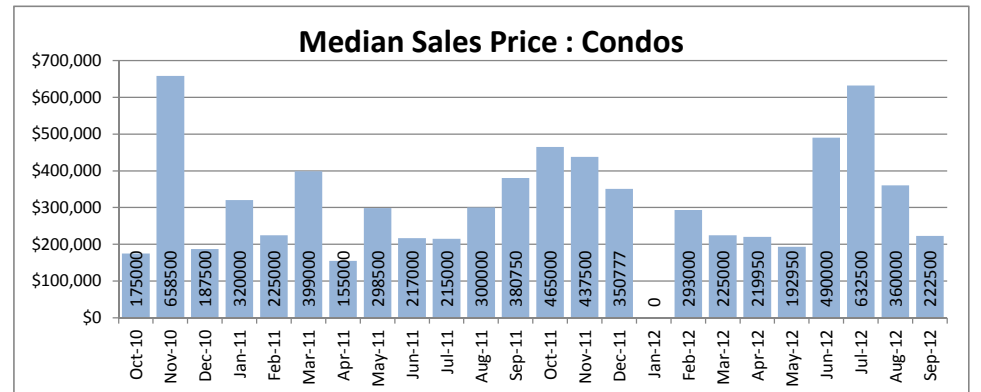
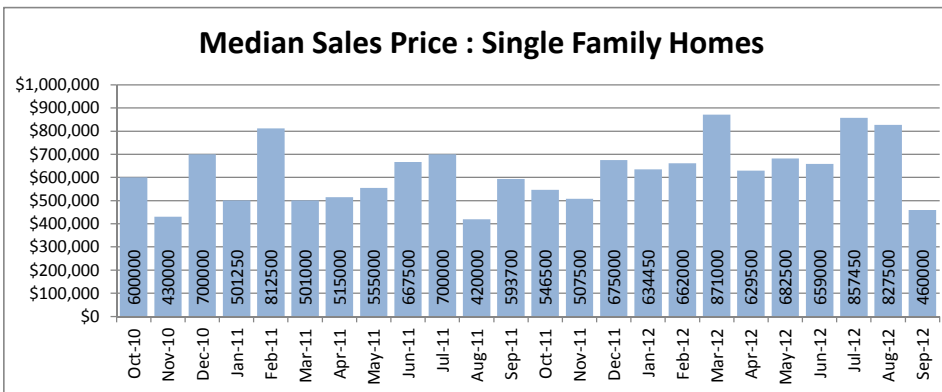
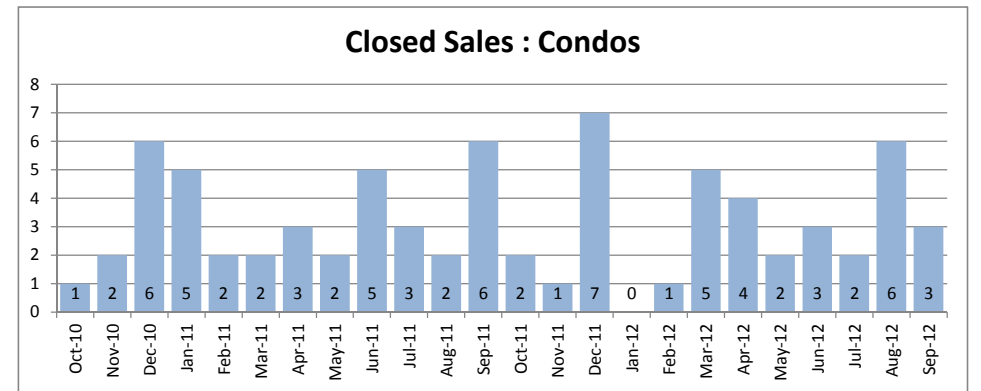
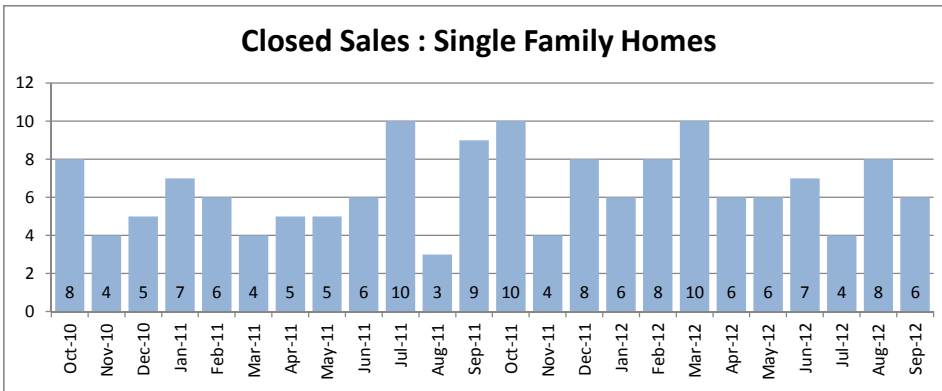


North Shore
1-5-6 to 1-6-9

September 2012

Single Family Homes	September			Year to Date		
	2012	2011	Change	2012	2011	Change
New Listings	9	13	-31%	91	154	-41%
Closed Sales	6	9	-33%	62	57	9%
Median Sales Price	\$460,000	\$593,700	-23%	\$645,000	\$586,250	10%
Percent of Original List Price Received	94.5%	90.3%	5%	90.2%	93.2%	-3%
Median Days on Market Until Sale	109	67	63%	66	66	0%
Inventory of Homes for Sale	59	77	-23%	--	--	--

Condos	September			Year to Date		
	2012	2011	Change	2012	2011	Change
New Listings	1	6	-83%	39	56	-30%
Closed Sales	3	6	-50%	26	30	-13%
Median Sales Price	\$222,500	\$380,750	-42%	\$294,000	\$226,000	30%
Percent of Original List Price Received	95.9%	78.0%	23%	92.7%	90.1%	3%
Median Days on Market Until Sale	9	107	-92%	80	41	95%
Inventory of Homes for Sale	26	32	-19%	--	--	--



SOURCE: Honolulu Board of REALTORS® , compiled from MLS data.

Local Market Update

September 2012

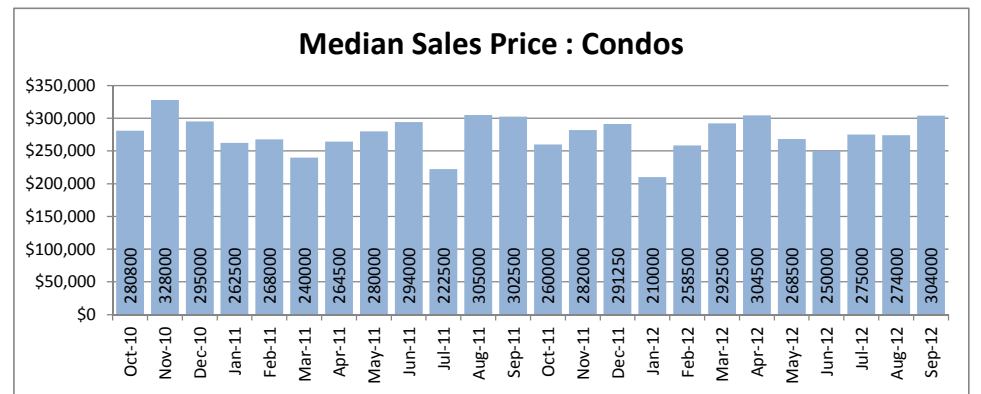
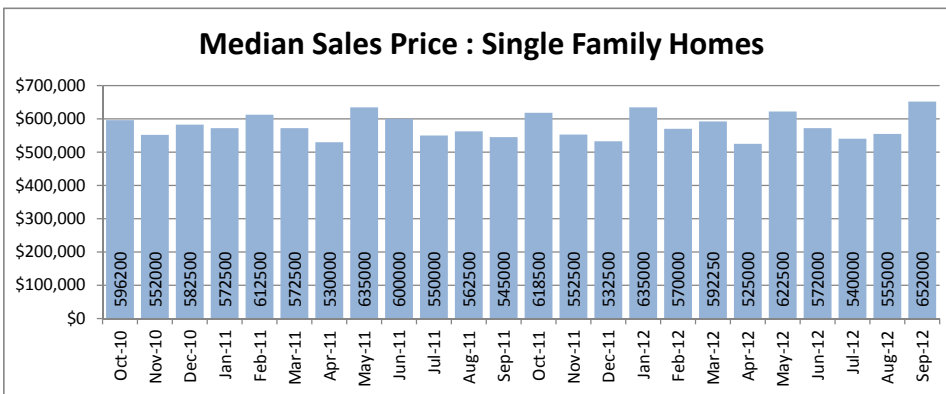
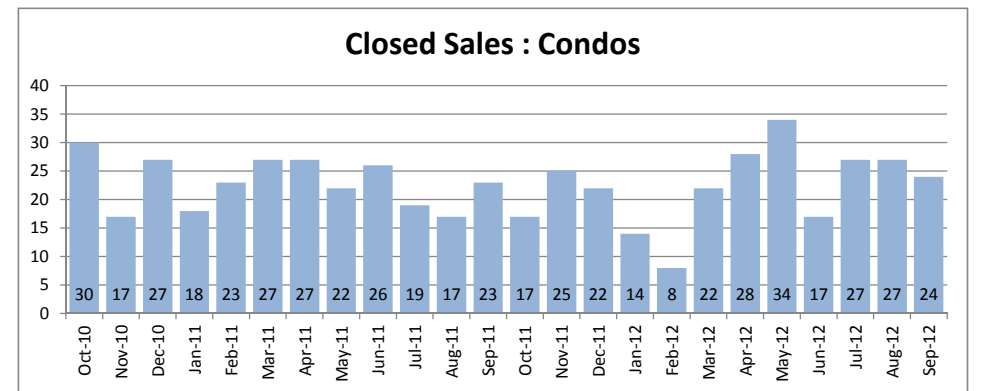
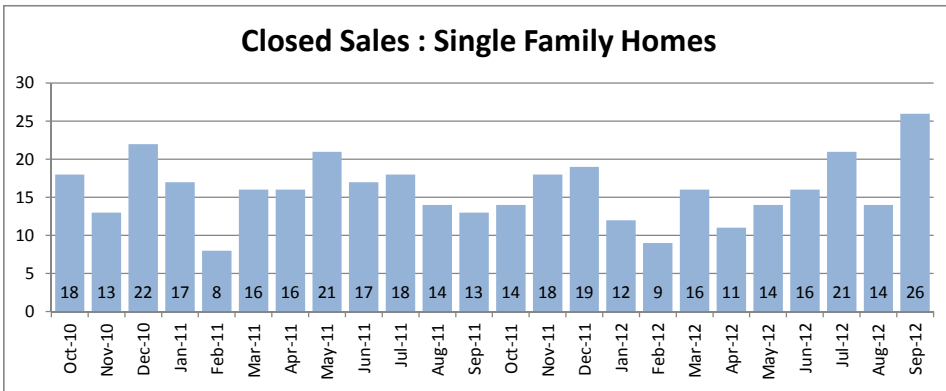


Pearl City - Aiea
1-9-6 to 1-9-9

September 2012

Single Family Homes	September			Year to Date		
	2012	2011	Change	2012	2011	Change
New Listings	25	26	-4%	181	230	-21%
Closed Sales	26	13	100%	141	140	1%
Median Sales Price	\$652,000	\$545,000	20%	\$600,000	\$570,000	5%
Percent of Original List Price Received	95.9%	93.7%	2%	96.9%	96.1%	1%
Median Days on Market Until Sale	25	38	-34%	28	35	-20%
Inventory of Homes for Sale	74	77	-4%	--	--	--

Condos	September			Year to Date		
	2012	2011	Change	2012	2011	Change
New Listings	32	33	-3%	246	303	-19%
Closed Sales	24	23	4%	211	208	1%
Median Sales Price	\$304,000	\$302,500	0%	\$270,000	\$265,000	2%
Percent of Original List Price Received	100.0%	94.3%	6%	96.4%	95.0%	1%
Median Days on Market Until Sale	39	23	70%	40	43	-7%
Inventory of Homes for Sale	86	91	-5%	--	--	--



SOURCE: Honolulu Board of REALTORS® , compiled from MLS data.

Local Market Update

September 2012

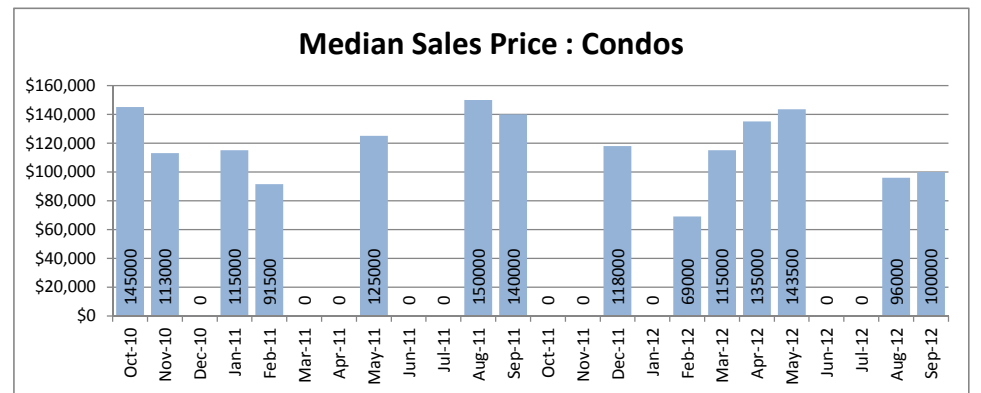
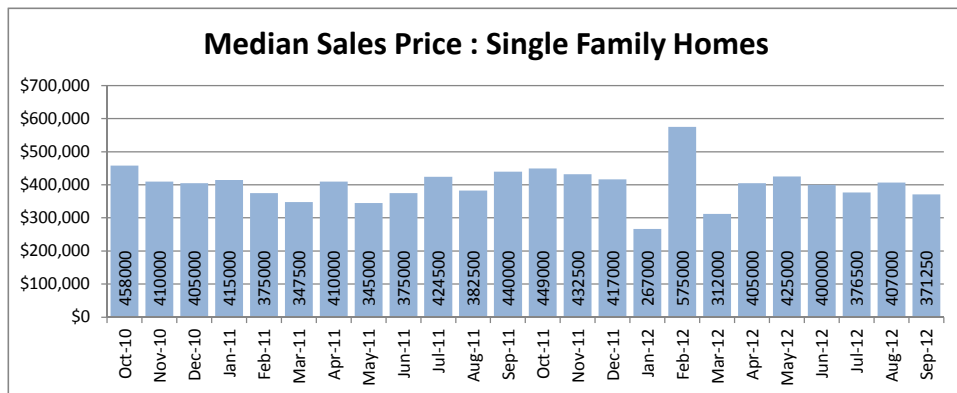
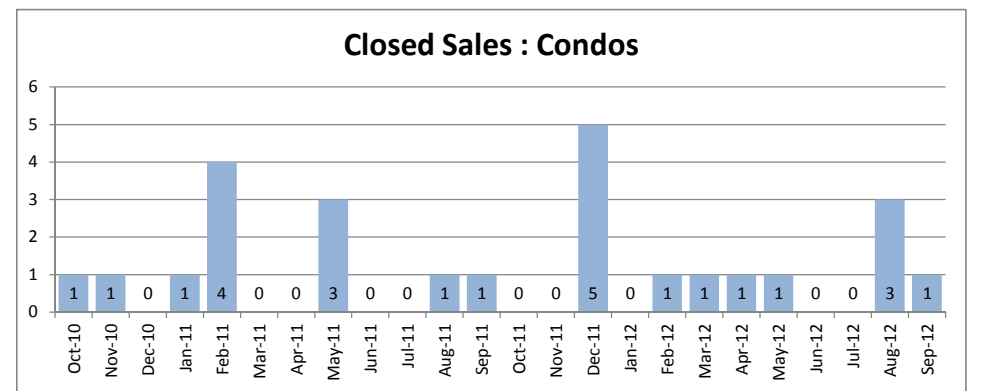
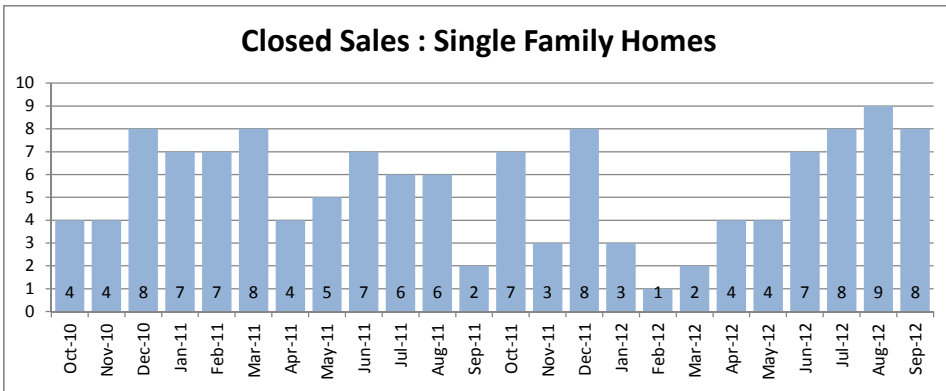


Wahiawa
1-7-1 to 1-7-7

September 2012

Single Family Homes	September			Year to Date		
	2012	2011	Change	2012	2011	Change
New Listings	7	11	-36%	65	73	-11%
Closed Sales	8	2	300%	47	52	-10%
Median Sales Price	\$371,250	\$440,000	-16%	\$385,000	\$389,500	-1%
Percent of Original List Price Received	97.2%	97.0%	0%	97.2%	92.1%	6%
Median Days on Market Until Sale	24	81	-70%	22	78	-72%
Inventory of Homes for Sale	27	33	-18%	--	--	--

Condos	September			Year to Date		
	2012	2011	Change	2012	2011	Change
New Listings	1	3	-67%	16	19	-16%
Closed Sales	1	1	0%	9	10	-10%
Median Sales Price	\$100,000	\$140,000	-29%	\$110,000	\$125,000	-12%
Percent of Original List Price Received	74.1%	73.7%	1%	88.0%	88.2%	0%
Median Days on Market Until Sale	115	170	-32%	71	93	-24%
Inventory of Homes for Sale	12	7	71%	--	--	--



SOURCE: Honolulu Board of REALTORS® , compiled from MLS data.

Local Market Update

September 2012



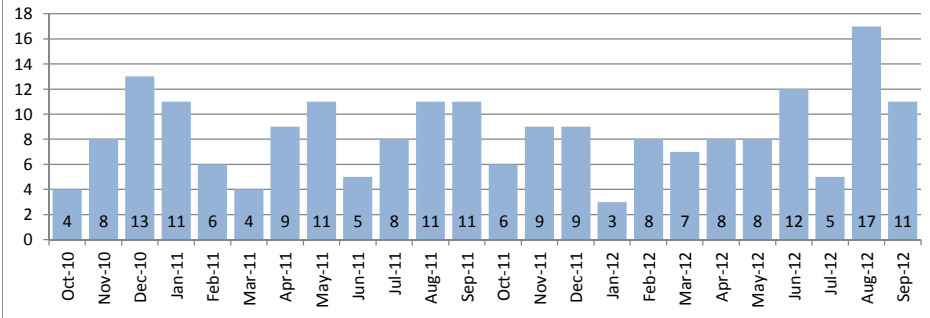
Waialae - Kahala
1-3-5

September 2012

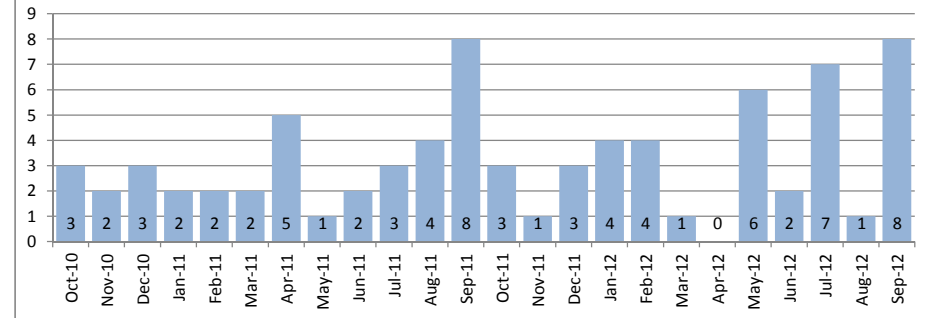
Single Family Homes	September			Year to Date		
	2012	2011	Change	2012	2011	Change
New Listings	19	12	58%	98	118	-17%
Closed Sales	11	11	0%	81	77	5%
Median Sales Price	\$1,760,000	\$1,400,000	26%	\$1,450,000	\$1,285,000	13%
Percent of Original List Price Received	100.6%	91.1%	10%	96.7%	92.3%	5%
Median Days on Market Until Sale	51	68	-25%	49	39	26%
Inventory of Homes for Sale	52	57	-9%	--	--	--

Condos	September			Year to Date		
	2012	2011	Change	2012	2011	Change
New Listings	4	3	33%	42	45	-7%
Closed Sales	8	8	0%	35	31	13%
Median Sales Price	\$418,000	\$625,000	-33%	\$410,850	\$443,500	-7%
Percent of Original List Price Received	98.5%	91.0%	8%	95.5%	95.3%	0%
Median Days on Market Until Sale	12	20	-40%	25	22	14%
Inventory of Homes for Sale	18	14	29%	--	--	--

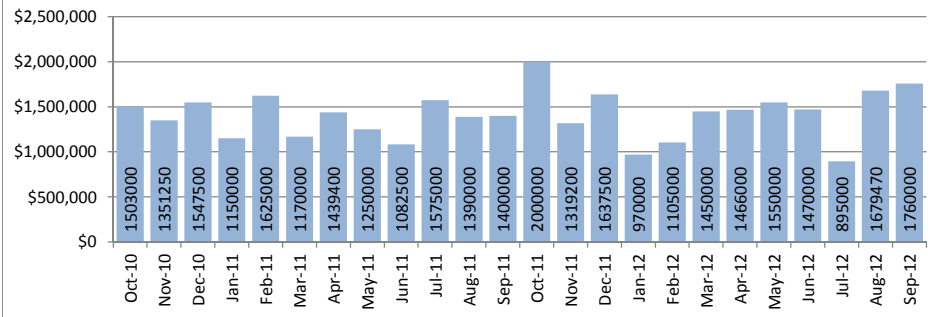
Closed Sales : Single Family Homes



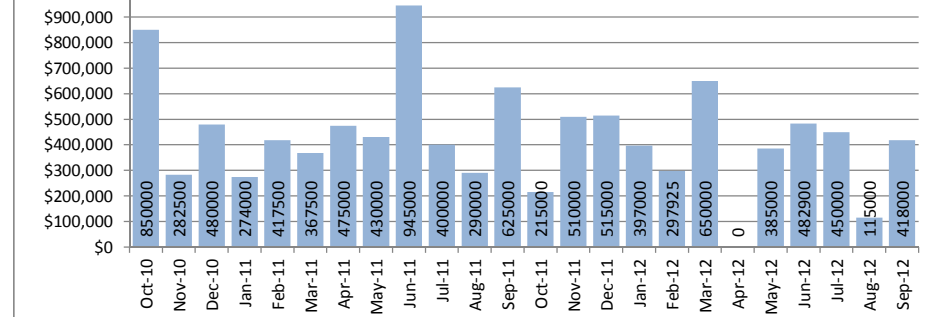
Closed Sales : Condos



Median Sales Price : Single Family Homes



Median Sales Price : Condos



SOURCE: Honolulu Board of REALTORS®, compiled from MLS data.

Local Market Update

September 2012

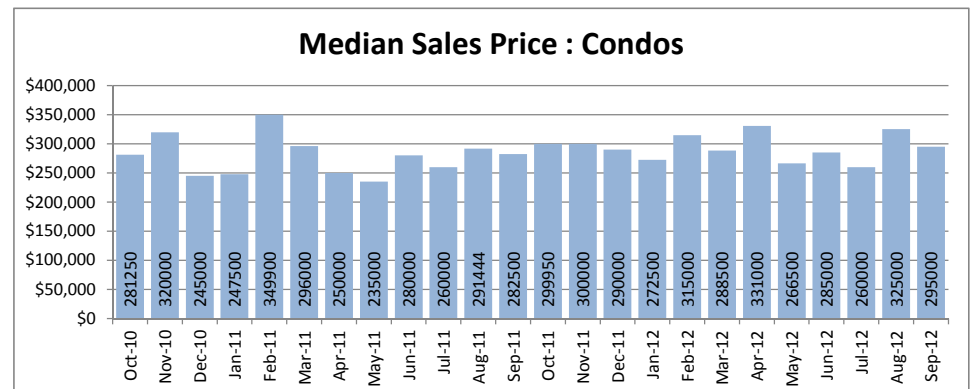
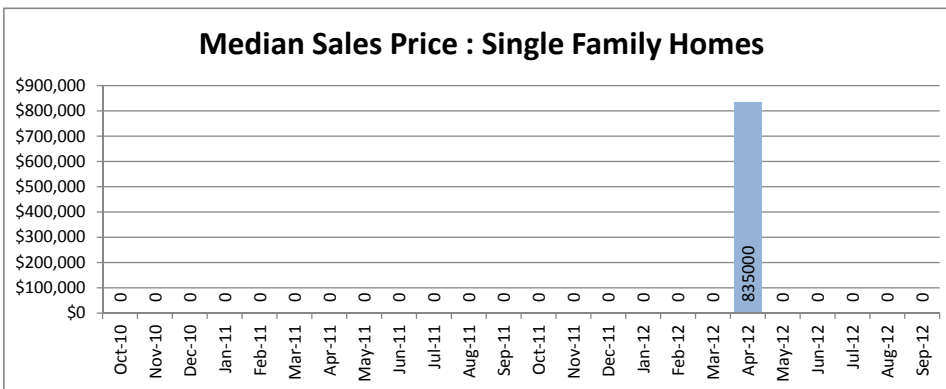
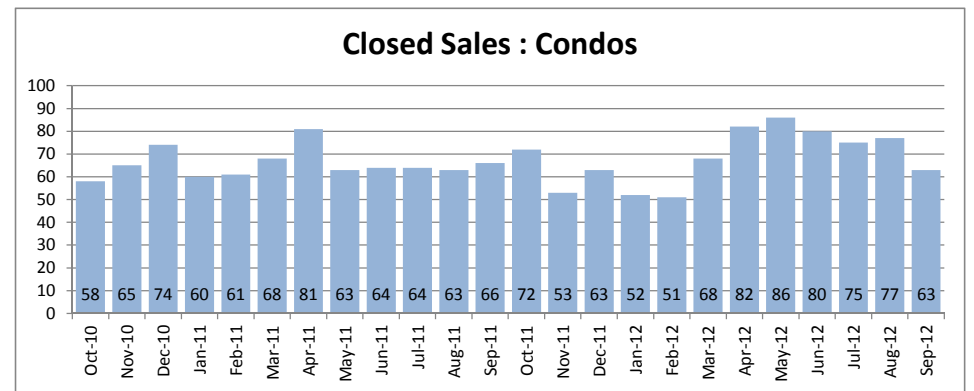
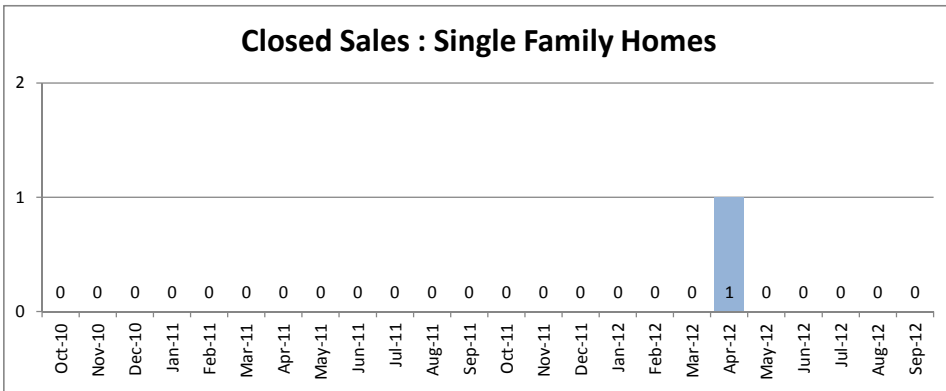


Waikiki
1-2-6

September 2012

Single Family Homes	September			Year to Date		
	2012	2011	Change	2012	2011	Change
New Listings	0	0	--	1	2	-50%
Closed Sales	0	0	--	1	0	--
Median Sales Price	\$0	\$0	--	\$835,000	\$0	--
Percent of Original List Price Received	0.0%	0.0%	--	92.9%	0.0%	--
Median Days on Market Until Sale	0	0	--	42	0	--
Inventory of Homes for Sale	0	2	--	--	--	--

Condos	September			Year to Date		
	2012	2011	Change	2012	2011	Change
New Listings	129	132	-2%	951	1182	-20%
Closed Sales	63	66	-5%	665	622	7%
Median Sales Price	\$295,000	\$282,500	4%	\$352,250	\$275,000	28%
Percent of Original List Price Received	98.7%	92.6%	7%	99.4%	93.2%	7%
Median Days on Market Until Sale	43	51	-16%	43	42	2%
Inventory of Homes for Sale	499	497	0%	--	--	--



SOURCE: Honolulu Board of REALTORS® , compiled from MLS data.

Local Market Update

September 2012

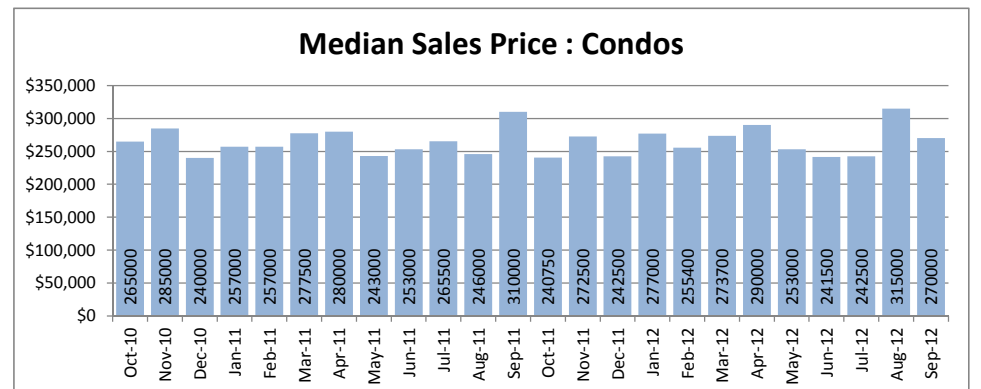
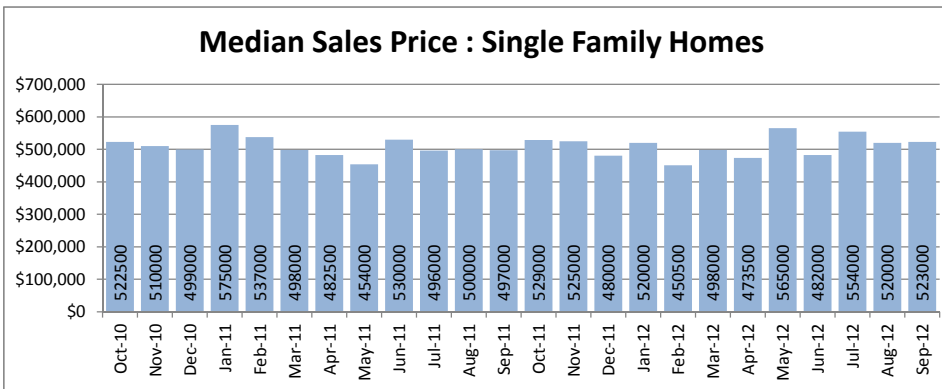
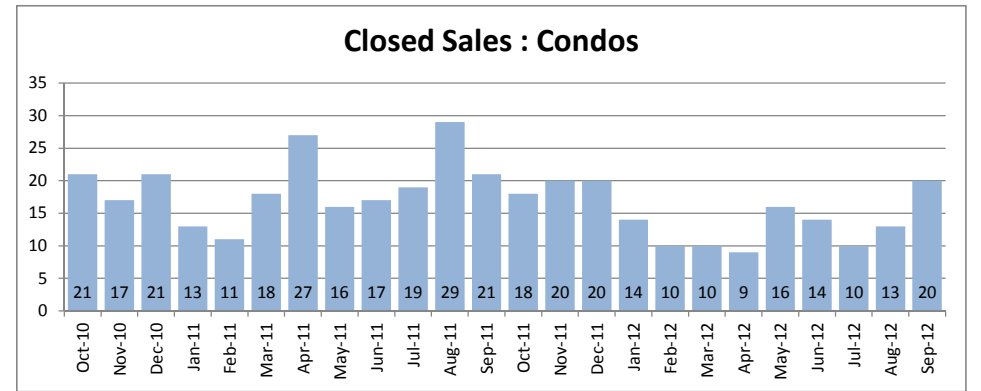
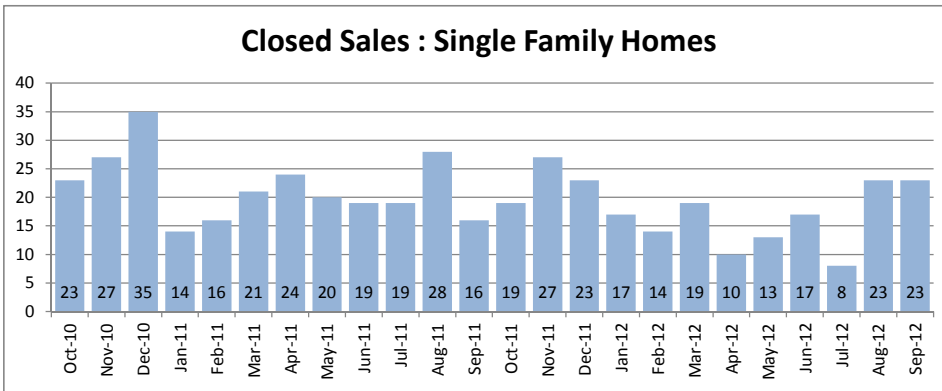


Waipahu
1-9-4

September 2012

Single Family Homes	September			Year to Date		
	2012	2011	Change	2012	2011	Change
New Listings	21	29	-28%	157	300	-48%
Closed Sales	23	16	44%	133	181	-27%
Median Sales Price	\$523,000	\$497,000	5%	\$485,000	\$505,000	-4%
Percent of Original List Price Received	97.4%	95.6%	2%	95.1%	96.3%	-1%
Median Days on Market Until Sale	32	28	14%	30	39	-23%
Inventory of Homes for Sale	62	104	-40%	--	--	--

Condos	September			Year to Date		
	2012	2011	Change	2012	2011	Change
New Listings	16	17	-6%	159	263	-40%
Closed Sales	20	21	-5%	108	174	-38%
Median Sales Price	\$270,000	\$310,000	-13%	\$262,000	\$260,000	1%
Percent of Original List Price Received	95.7%	98.0%	-2%	95.3%	95.4%	0%
Median Days on Market Until Sale	23	21	10%	28	38	-26%
Inventory of Homes for Sale	63	84	-25%	--	--	--



SOURCE: Honolulu Board of REALTORS® , compiled from MLS data.

Local Market Update

September 2012

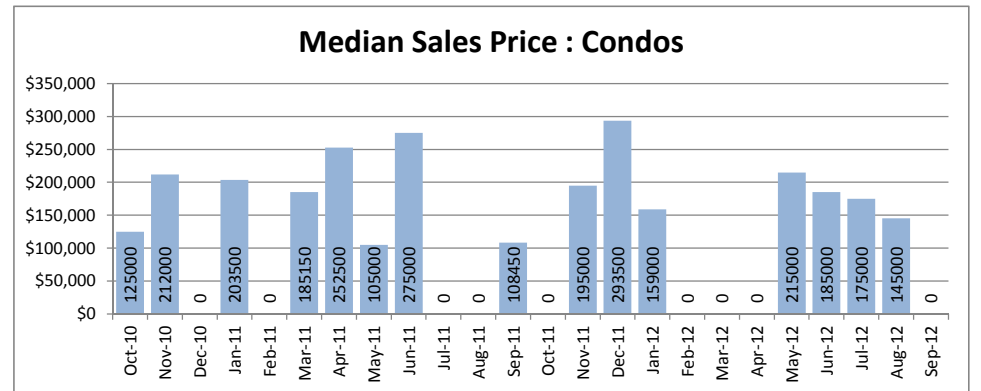
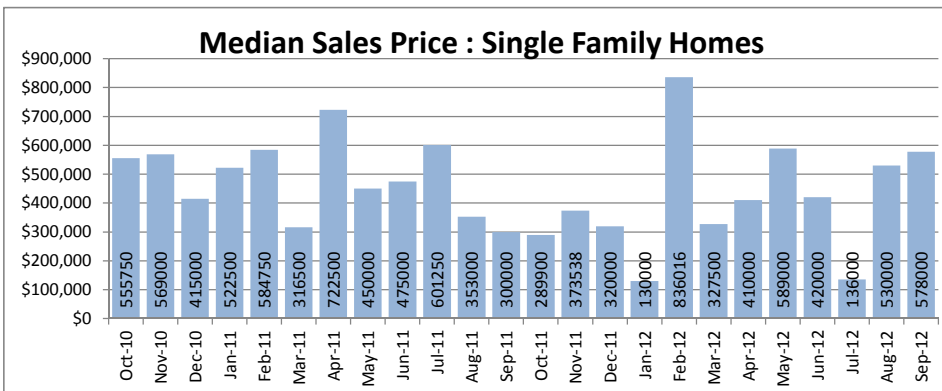
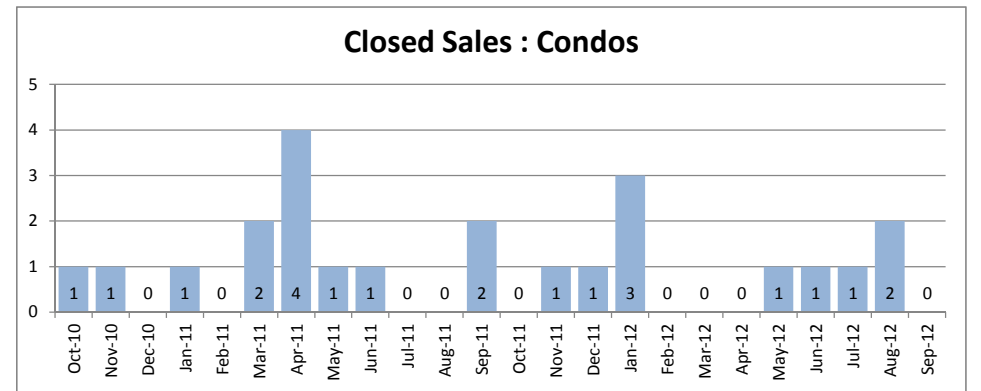
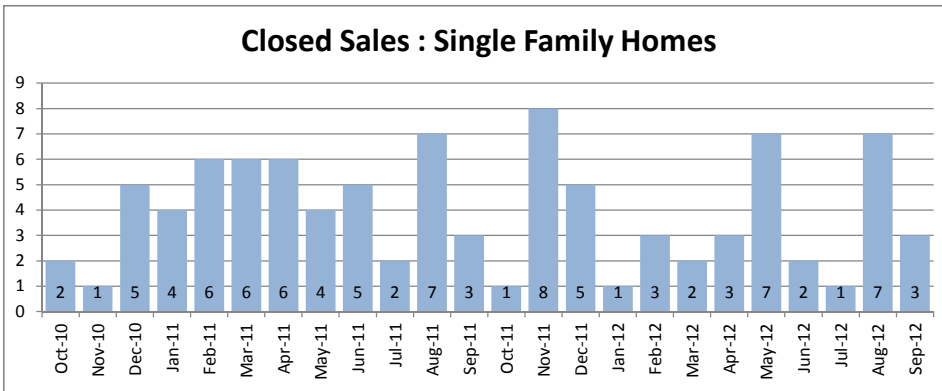
Windward Coast
1-4-8 to 1-5-5



September 2012

Single Family Homes	September			Year to Date		
	2012	2011	Change	2012	2011	Change
New Listings	8	13	-38%	71	110	-35%
Closed Sales	3	3	0%	32	43	-26%
Median Sales Price	\$578,000	\$300,000	93%	\$484,000	\$524,500	-8%
Percent of Original List Price Received	97.1%	89.4%	9%	88.0%	91.2%	-4%
Median Days on Market Until Sale	7	76	-91%	27	55	-51%
Inventory of Homes for Sale	44	54	-19%	--	--	--

Condos	September			Year to Date		
	2012	2011	Change	2012	2011	Change
New Listings	2	0	--	17	23	-26%
Closed Sales	0	2	--	9	11	-18%
Median Sales Price	\$0	\$108,450	--	\$185,000	\$203,500	-9%
Percent of Original List Price Received	0.0%	77.5%	--	100.0%	85.7%	17%
Median Days on Market Until Sale	0	73	--	56	83	-33%
Inventory of Homes for Sale	12	16	-25%	--	--	--



SOURCE: Honolulu Board of REALTORS® , compiled from MLS data.

Single Family Solds - September 2012 vs 2011 (Based on region and neighborhood groupings as listed in MLS) - Page 1 of 5

Central Region	2011 Median	2012 Median	+/-	+/-	2011 Sold	2012 Sold	+/-	+/-
LAUNANI VALLEY	\$ 405,400	\$ 490,000	20.9%	\$84,600	1	2	100.0%	1
MILILANI AREA	\$ 567,500	\$ 579,000	2.0%	\$11,500	6	9	50.0%	3
MILILANI MAUKA	\$ 690,000	\$ 725,000	5.1%	\$35,000	10	9	-10.0%	-1
WAHIAWA AREA	\$ 480,000	\$ 400,000	-16.7%	-\$80,000	1	3	200.0%	2
WAHIAWA HEIGHTS	-	\$ 385,000	-	-	-	1	-	-
WAHIAWA PARK	-	\$ 377,500	-	-	-	1	-	-
WAIPIO ACRES/WAIKALANI WOOD	\$ 385,000	-	-	-	2	-	-	-
WHITMORE VILLAGE	\$ 437,500	\$ 350,000	-20.0%	-\$87,500	2	3	50.0%	1
Central Region	\$ 572,500	\$ 562,100	-1.8%	-\$10,400	22	28	27.3%	6

Diamond Hd Region	2011 Median	2012 Median	+/-	+/-	2011 Sold	2012 Sold	+/-	+/-
AINA HAINA	-	1050000	-	-	-	1	-	-
AINA HAINA AREA	\$ 864,750	\$ 980,000	13.3%	\$115,250	2	4	100.0%	2
BLACK POINT	\$ 2,075,000	-	-	-	2	-	-	-
DIAMOND HEAD	\$ 2,222,500	\$ 2,200,000	-1.0%	-\$22,500	4	5	25.0%	1
HAWAII LOA RIDGE	\$ 1,625,000	\$ 1,510,000	-7.1%	-\$115,000	1	1	0.0%	0
KAHALA AREA	\$ 2,325,000	\$ 2,800,000	20.4%	\$475,000	4	4	0.0%	0
KAHALA KUA	-	\$ 1,989,000	-	-	-	1	-	-
KAILANI IKI	\$ 880,000	-	-	-	1	-	-	-
KAIMUKI	\$ 860,000	-	-	-	9	-	-	-
KAPAHULU	\$ 907,500	\$ 875,000	-3.6%	-\$32,500	4	3	-25.0%	-1
KULIOUOU	-	\$ 680,000	-	-	-	2	-	-
MAUNALANI HEIGHTS	\$ 1,100,000	\$ 1,472,500	33.9%	\$372,500	1	2	100.0%	1
NIU BEACH	\$ 5,300,000	\$ 1,850,000	-65.1%	-\$3,450,000	1	1	0.0%	0
NIU VALLEY	\$ 840,000	\$ 1,050,000	25.0%	\$210,000	1	1	0.0%	0
PALOLO	\$ 570,000	\$ 732,000	28.4%	\$162,000	5	4	-20.0%	-1
ST. LOUIS	\$ 845,000	\$ 710,000	-16.0%	-\$135,000	1	1	0.0%	0
WAIALAE G/C	-	\$ 1,550,000	-	-	-	1	-	-
WAIALAE IKI	\$ 1,225,000	\$ 1,760,000	43.7%	\$535,000	3	3	0.0%	0
WAIALAE NUI RDGE	\$ 875,000	\$ 1,030,000	17.7%	\$155,000	1	1	0.0%	0
WAIALAE NUI-LWR	-	\$ 780,000	-	-	-	1	-	-
WAILUPE AREA	-	\$ 1,972,500	-	-	-	2	-	-
WILHELMINA	\$ 675,000	\$ 845,000	25.2%	\$170,000	4	5	25.0%	1
Diamond Hd Region	\$ 950,000	\$ 1,050,000	10.5%	\$100,000	44	43	-2.3%	-1

Hawaii Kai Region	2011 Median	2012 Median	+/-	+/-	2011 Sold	2012 Sold	+/-	+/-
ANCHORAGE	-	\$ 1,550,000	-	-	-	1	-	-
HAAHAIONE-LOWER	\$ 790,000	\$ 820,000	3.8%	\$30,000	1	1	0.0%	0
HAAHAIONE-UPPER	-	\$ 969,500	-	-	-	2	-	-
KALAMA VALLEY	\$ 692,500	\$ 700,000	1.1%	\$7,500	2	4	100.0%	2
KAMEHAMEHA RIDGE	\$ 1,275,000	-	-	-	1	-	-	-
KAMILO IKI	\$ 695,000	\$ 680,000	-2.2%	-\$15,000	2	1	-50.0%	-1
KAMILO NUI	-	\$ 1,205,000	-	-	-	1	-	-
KOKO HEAD TERRAC	\$ 751,000	\$ 667,500	-11.1%	-\$83,500	3	4	33.3%	1
KOKO VILLAS	-	\$ 1,225,000	-	-	-	1	-	-
LUNA KAI	\$ 850,000	-	-	-	1	-	-	-
MARINA WEST	-	\$ 1,256,500	-	-	-	2	-	-
MARINERS COVE	\$ 1,075,000	\$ 1,800,000	67.4%	\$725,000	1	1	0.0%	0
MARINERS RIDGE	\$ 985,000	\$ 952,000	-3.4%	-\$33,000	3	2	-33.3%	-1
NAPALI HAWEO	-	\$ 1,810,000	-	-	-	2	-	-
QUEENS GATE	\$ 765,000	\$ 1,070,000	39.9%	\$305,000	1	1	0.0%	0
SPINNAKER ISLE	\$ 1,195,000	-	-	-	1	-	-	-
TRIANGLE	-	\$ 1,312,500	-	-	-	2	-	-
WEST MARINA	\$ 1,012,500	\$ 725,000	-28.4%	-\$287,500	2	1	-50.0%	-1
Hawaii Kai Region	\$ 829,000	\$ 899,500	8.5%	\$70,500	18	26	44.4%	8

Single Family Solds - September 2012 vs 2011 (Based on region and neighborhood groupings as listed in MLS) - Page 2 of 5

Leeward Region	2011 Median	2012 Median	+/-	+/-	2011 Sold	2012 Sold	+/-	+/-
LUALUALEI	\$ 230,000	\$ 292,000	27.0%	\$62,000	3	1	-66.7%	-2
MAILI	\$ 291,375	\$ 292,500	0.4%	\$1,125	12	10	-16.7%	-2
MALI SEA-MAKALAE 1	-	\$ 398,256	-	-	-	4	-	-
MALI SEA-NOHOKAI	\$ 301,000	-	-	-	1	-	-	-
MAKAHA	\$ 270,000	\$ 255,500	-5.4%	-\$14,500	5	6	20.0%	1
WAIANAE	\$ 225,500	-	-	-	4	-	-	-
Leeward Region	\$ 270,000	\$ 306,000	13.3%	\$36,000	25	21	-16.0%	-4

Ewa Plain Region	2011 Median	2012 Median	+/-	+/-	2011 Sold	2012 Sold	+/-	+/-
EWA BEACH	\$ 390,000	\$ 329,500	-15.5%	-\$60,500	6	2	-66.7%	-4
EWA GEN ALII COURT	\$ 265,000	-	-	-	1	-	-	-
EWA GEN ALII COVE	\$ 310,000	\$ 351,000	13.2%	\$41,000	3	1	-66.7%	-2
EWA GEN BREAKERS	\$ 545,000	-	-	-	1	-	-	-
EWA GEN CARRIAGES	\$ 650,000	-	-	-	1	-	-	-
EWA GEN CORTEBELLA	\$ 301,000	-	-	-	1	-	-	-
EWA GEN HALEAKEA	\$ 855,100	\$ 751,000	-12.2%	-\$104,100	1	3	200.0%	2
EWA GEN KULA LEI	-	\$ 477,000	-	-	-	1	-	-
EWA GEN LOFTS	\$ 275,000	-	-	-	1	-	-	-
EWA GEN MERIDIAN	\$ 465,250	-	-	-	2	-	-	-
EWA GEN MONTECITO/TUSCANY	\$ 385,000	\$ 405,000	5.2%	\$20,000	1	1	0.0%	0
EWA GEN PRESCOTT	\$ 635,000	\$ 509,000	-19.8%	-\$126,000	1	1	0.0%	0
EWA GEN SUMMERHILL	\$ 420,000	\$ 457,500	8.9%	\$37,500	1	2	100.0%	1
EWA GEN SODA CREEK	-	\$ 402,000	-	-	-	1	-	-
EWA GEN SONOMA	-	\$ 500,000	-	-	-	1	-	-
EWA GEN SUN TERRA ON THE PARK	\$ 423,500	-	-	-	2	-	-	-
EWA GEN SUN TERRA SOUTH	-	\$ 427,000	-	-	-	1	-	-
EWA GEN TERRAZZA	-	\$ 390,000	-	-	-	2	-	-
EWA GEN TIBURON	\$ 350,000	-	-	-	1	-	-	-
EWA GEN TUSCANY II	-	\$ 448,000	-	-	-	1	-	-
EWA GEN WOODBRIDGE	\$ 645,000	-	-	-	1	-	-	-
EWA VILLAGES	-	\$ 420,000	-	-	-	3	-	-
HOAKALEI-KA MAKANA	\$ 554,465	\$ 659,000	18.9%	\$104,535	1	3	200.0%	2
HUELANI	-	\$ 470,000	-	-	-	1	-	-
KAPOLEI	\$ 499,546	\$ 499,621	0.0%	\$75	2	4	100.0%	2
KAPOLEI-AELOA	\$ 629,000	-	-	-	1	-	-	-
KAPOLEI-KAI	\$ 449,500	\$ 475,000	5.7%	\$25,500	1	1	0.0%	0
KAPOLEI KNOLLS	\$ 537,500	-	-	-	2	-	-	-
KAPOLEI-IWALANI	-	\$ 510,000	-	-	-	1	-	-
KAPOLEI-KEKUILANI	\$ 462,500	-	-	-	2	-	-	-
KO OLINA	\$ 1,195,000	-	-	-	1	-	-	-
LEEWARD ESTATES	\$ 382,000	-	-	-	1	-	-	-
OCEAN POINTE	\$ 468,000	\$ 505,000	7.9%	\$37,000	10	6	-40.0%	-4
WESTLOCH ESTATES	\$ 495,000	\$ 450,000	-9.1%	-\$45,000	1	1	0.0%	0
WESTLOCH FAIRWAY	\$ 445,000	\$ 487,000	9.4%	\$42,000	2	2	0.0%	0
Ewa Plain Region	\$ 457,750	\$ 477,000	4.2%	\$19,250	48	39	-18.8%	-9

Makakilo Region	2011 Median	2012 Median	+/-	+/-	2011 Sold	2012 Sold	+/-	+/-
MAKAKILO-ANUHEA	\$ 565,000	-	-	-	1	-	-	-
MAKAKILO-KAHIWELO	\$ 649,000	\$ 647,707	-0.2%	-\$1,293	1	1	0.0%	0
MAKAKILO-KUMULANI	-	\$ 815,000	-	-	-	1	-	-
MAKAKILO-UPPER	\$ 468,000	\$ 497,500	6.3%	\$29,500	4	2	-50.0%	-2
MAKAKILO-LOWER	\$ 416,600	\$ 465,000	11.6%	\$48,400	2	2	0.0%	0
MAKAKILO-STARSEDGE	\$ 680,000	\$ 646,500	-4.9%	-\$33,500	1	2	100.0%	1
MAKAKILO-WAI KALOI	-	\$ 639,800	-	-	-	1	-	-
MAKAKILO-WEST HILLS	\$ 542,000	\$ 610,000	12.5%	\$68,000	3	3	0.0%	0
NANAKAI GARDENS	-	\$ 425,000	-	-	-	1	-	-
Makakilo Region	\$ 536,000	\$ 610,000	13.8%	\$74,000	12	13	8.3%	1

Single Family Solds - September 2012 vs 2011 (Based on region and neighborhood groupings as listed in MLS) - Page 3 of 5

Kailua Region	2011 Median	2012 Median	+/-	+/-	2011 Sold	2012 Sold	+/-	+/-
AIKAHI PARK	-	\$ 782,500	-	-	-	2	-	-
BEACHSIDE	-	\$ 1,695,000	-	-	-	3	-	-
COCONUT GROVE	\$ 450,000	\$ 674,500	49.9%	\$224,500	3	3	0.0%	0
COUNTRY CLUB KNOLL	\$ 1,405,500	\$ 1,150,000	-18.2%	-\$255,500	2	1	-50.0%	-1
ENCHANTED LAKE	\$ 742,500	\$ 849,000	14.3%	\$106,500	6	1	-83.3%	-5
HILLCREST	-	\$ 945,000	-	-	-	1	-	-
KAILUA BLUFFS	\$ 840,000	\$ 935,000	11.3%	\$95,000	2	1	-50.0%	-1
KAILUA ESTATES	\$ 855,000	-	-	-	2	-	-	-
KAIMALINO	\$ 3,200,000	\$ 1,159,575	-63.8%	-\$2,040,425	1	1	0.0%	0
KAWAIOLOA	\$ 1,300,000	-	-	-	1	-	-	-
KALAEHO HILLSIDE	-	\$ 825,000	-	-	-	1	-	-
KALAMA TRACT	-	\$ 1,672,000	-	-	-	1	-	-
KALAMA/CNUT GROV	-	\$ 751,000	-	-	-	1	-	-
KAOPA	-	\$ 754,000	-	-	-	1	-	-
KEOLU HILLS	\$ 650,000	\$ 768,000	18.2%	\$118,000	2	4	100.0%	2
KOOLAUPOKU	-	\$ 990,000	-	-	-	1	-	-
LANIKAI	\$ 1,130,000	-	-	-	2	-	-	-
MAUNAWILI	\$ 730,500	\$ 780,000	6.8%	\$49,500	2	1	-50.0%	-1
OLOMANA	\$ 640,000	-	-	-	2	-	-	-
POHAKUPU	-	\$ 875,000	-	-	-	1	-	-
WAIMANALO	-	\$ 1,837,500	-	-	-	2	-	-
Kailua Region	\$ 735,000	\$ 832,000	13.2%	\$97,000	25	26	4.0%	1

Kaneohe Region	2011 Median	2012 Median	+/-	+/-	2011 Sold	2012 Sold	+/-	+/-
AHAOLELO	\$ 1,100,000	-	-	-	1	-	-	-
AHUIMANU AREA	\$ 655,000	475000	-27.5%	-\$180,000	1	1	0.0%	0
ALII SHORES	\$ 795,000	-	-	-	1	-	-	-
BAY VIEW GARDEN	-	\$ 919,500	-	-	1	1	0.0%	0
BAYVIEW GOLF COURSE	\$ 932,512	-	-	-	1	-	-	-
CROWN TERRACE	\$ 680,000	-	-	-	1	-	-	-
HALE KOU	-	\$ 690,000	-	-	-	1	-	-
HAIKU VILLAGE	-	\$ 683,000	-	-	-	1	-	-
HALEKAUWILA	\$ 452,500	\$ 695,000	53.6%	\$242,500	2	2	0.0%	0
HAUULA	\$ 282,000	-	-	-	2	-	-	-
KAAAWA	-	\$ 591,000	-	-	-	2	-	-
KAALAEA	\$ 592,000	-	-	-	1	-	-	-
KEAAHALA	\$ 500,000	-	-	-	1	-	-	-
KANEOHE TOWN	-	\$ 715,000	-	-	-	1	-	-
KEAPUKA	-	\$ 600,000	-	-	-	1	-	-
LILIPUNA	\$ 1,100,000	-	-	-	1	-	-	-
LULANI OCEAN	-	\$ 659,000	-	-	-	1	-	-
MAHALANI	-	\$ 550,000	-	-	-	1	-	-
MAHINUI	\$ 680,000	\$ 920,000	35.3%	\$240,000	2	3	50.0%	1
PIKOILOA	\$ 552,500	\$ 377,000	-31.8%	-\$175,500	2	3	50.0%	1
PUOHALA VILLAGE	-	\$ 485,000	-	-	-	2	-	-
VALLEY ESTATES	-	\$ 363,000	-	-	-	2	-	-
WAIHEE	-	\$ 700,000	-	-	-	1	-	-
WAIKALUA	\$ 510,000	-	-	-	3	-	-	-
WOODRIDGE	\$ 460,000	\$ 493,000	7.2%	\$33,000	1	1	0.0%	0
Kaneohe Region	\$ 557,500	\$ 592,500	6.3%	\$35,000	20	24	20.0%	4

Single Family Solds - September 2012 vs 2011 (Based on region and neighborhood groupings as listed in MLS) - Page 4 of 5

Pearl City Region	2011 Median	2012 Median	+/-	+/-	2011 Sold	2012 Sold	+/-	+/-
AIEA AREA	\$ 380,000	\$ 490,000	28.9%	\$110,000	3	1	-66.7%	-2
AIEA HEIGHTS	-	\$ 625,000	-	-	-	5	-	-
FOSTER VILLAGE	\$ 630,000	\$ 609,500	-3.3%	-\$20,500	1	2	100.0%	1
HALAWA	\$ 545,000	\$ 696,400	27.8%	\$151,400	1	1	0.0%	0
MOMILANI	\$ 408,000	-	-	-	1	-	-	-
NEWTOWN	\$ 505,000	\$ 695,000	37.6%	\$190,000	1	3	200.0%	2
PACIFIC PALISADES	\$ 563,000	\$ 480,000	-14.7%	-\$83,000	1	2	100.0%	1
PEARL CITY-UPPER	\$ 544,758	\$ 665,000	22.1%	\$120,242	2	3	50.0%	1
PEARLRIDGE	-	\$ 720,000	-	-	-	3	-	-
ROYAL SUMMIT	-	\$ 939,499	-	-	-	2	-	-
WAIU	-	\$ 620,000	-	-	-	1	-	-
WAILUNA	\$ 652,000	\$ 740,000	13.5%	\$88,000	2	1	-50.0%	-1
WAIMALU	\$ 480,000	\$ 607,500	26.6%	\$127,500	1	2	100.0%	1
Pearl City Region	\$ 545,000	\$ 652,000	19.6%	\$107,000	13	26	100.0%	13

Metro Region	2011 Median	2012 Median	+/-	+/-	2011 Sold	2012 Sold	+/-	+/-
ALEWA HEIGHTS	\$ 607,500	-	-	-	2	-	-	-
ALIAMANU	\$ 501,000	\$ 409,000	-18.4%	-\$92,000	3	1	-66.7%	-2
DOWSETT	\$ 1,550,000	-	-	-	1	-	-	-
KALIHI-LOWER	\$ 480,000	\$ 514,500	7.2%	\$34,500	5	2	-60.0%	-3
KALIHI-UPPER	\$ 622,000	\$ 821,900	32.1%	\$199,900	1	2	100.0%	1
KALIHI VALLEY	\$ 510,000	\$ 439,500	-13.8%	-\$70,500	1	2	100.0%	1
KAM HEIGHTS	\$ 755,000	\$ 587,500	-22.2%	-\$167,500	1	2	100.0%	1
KAPALAMA	\$ 514,950	-	-	-	1	-	-	-
KUAKINI	-	\$ 350,000	-	-	-	1	-	-
LILIHA	\$ 455,000	-	-	-	1	-	-	-
MAKIKI HEIGHTS	-	\$ 850,000	-	-	-	1	-	-
MANOA AREA	\$ 1,175,000	\$ 1,220,000	3.8%	\$45,000	3	3	0.0%	0
MANOA-UPPER	\$ 880,000	\$ 942,500	7.1%	\$62,500	1	4	300.0%	3
MANOA LOWER	\$ 363,000	-	-	-	1	-	-	-
MANOA-WOODLAWN	\$ 815,000	-	-	-	4	-	-	-
MOANALUA GARDENS	-	\$ 813,500	-	-	-	3	-	-
MOIILILI	-	\$ 610,000	-	-	-	1	-	-
PACIFIC HEIGHTS	\$ 1,122,500	-	-	-	2	-	-	-
PALOLO	-	\$ 585,000	-	-	-	1	-	-
PAUOA VALLEY	\$ 525,000	\$ 761,000	45.0%	\$236,000	1	1	0.0%	0
PUUNUI	-	\$ 629,500	-	-	-	4	-	-
PUNCHBOWL-LOWER	-	\$ 639,000	-	-	-	1	-	-
UNIVERSITY	\$ 655,000	-	-	-	1	-	-	-
SALT LAKE	-	\$ 750,000	-	-	-	1	-	-
Metro Region	\$ 623,500	\$ 723,900	16.1%	\$100,400	30	30	0.0%	0

North Shore Region	2011 Median	2012 Median	+/-	+/-	2011 Sold	2012 Sold	+/-	+/-
HALEIWA	\$ 650,000	-	-	-	1	-	-	-
KAHUKU	\$ 385,500	\$ 511,000	32.6%	\$125,500	2	1	-50.0%	-1
KAWAIILOA	\$ 837,500	-	-	-	2	-	-	-
LAIE	\$ 850,000	\$ 550,000	-35.3%	-\$300,000	1	1	0.0%	0
PAALAAKAI	\$ 357,000	\$ 390,000	9.2%	\$33,000	1	1	0.0%	0
SUNSET AREA	\$ 565,000	-	-	-	1	-	-	-
SUNSET/VELZY	\$ 745,000	-	-	-	1	-	-	-
WAIALUA	\$ 593,700	\$ 460,000	-22.5%	-\$133,700	2	4	100.0%	2
North Shore Region	\$ 599,900	\$ 470,000	-21.7%	-\$129,900	11	7	-36.4%	-4

Single Family Solds - September 2012 vs 2011 (Based on region and neighborhood groupings as listed in MLS) - Page 5 of 5

Waipahu Region	2011 Median	2012 Median	+/-	+/-	2011 Sold	2012 Sold	+/-	+/-
CRESTVIEW	-	\$ 457,000	-	-	-	2	-	-
ROYAL KUNIA	\$ 460,500	\$ 565,000	22.7%	\$104,500	2	8	300.0%	6
VILLAGE PARK	\$ 412,500	\$ 460,000	11.5%	\$47,500	4	5	25.0%	1
WAIKELE	\$ 573,500	\$ 613,500	7.0%	\$40,000	2	2	0.0%	0
WAIPAHU-LOWER	\$ 525,000	-	-	-	3	-	-	-
WAIPIO GENTRY	\$ 497,000	\$ 465,000	-6.4%	-\$32,000	2	1	-50.0%	-1
Waipahu Region	\$ 492,500	\$ 492,500	0.0%	\$0	13	18	38.5%	5

Condo Solds - September 2012 vs 2011 (Based on region and neighborhood groupings as listed in MLS) - Page 1 of 3

Central Region	2011 Median	2012 Median	+/-	+/-	2011 Sold	2012 Sold	+/-	+/-
LAUNANI VALLEY	\$ 357,000	\$ 294,000	-17.6%	-\$63,000	3	3	0.0%	0
MILILANI AREA	\$ 283,375	\$ 254,000	-10.4%	-\$29,375	6	10	66.7%	4
MILILANI MAUKA	\$ 319,000	\$ 315,000	-1.3%	-\$4,000	8	10	25.0%	2
WAIPIO ACRES/WAIKALANI WOOD	\$ 141,500	\$ 190,000	34.3%	\$48,500	8	5	-37.5%	-3
WILIKINA	\$ 140,000	\$ 100,000	-28.6%	-\$40,000	1	1	0.0%	0
Central Region	\$ 255,000	\$ 260,000	2.0%	\$5,000	26	29	11.5%	3

Diamond Hd Region	2011 Median	2012 Median	+/-	+/-	2011 Sold	2012 Sold	+/-	+/-
DIAMOND HEAD	\$ 1,525,000	\$ 455,000	-70.2%	-\$1,070,000	4	3	-25.0%	-1
KAHALA AREA	\$ 1,125,000	-	-	-	2	-	-	-
KALANI IKI	\$ 697,500	\$ 675,000	-3.2%	-\$22,500	2	1	-50.0%	-1
PAIKO LAGOON	-	\$ 510,000	-	-	-	1	-	-
WAIALAE G/C	\$ 150,000	\$ 165,000	10.0%	\$15,000	1	2	100.0%	1
WAIALAE NUI VLY	\$ 589,000	\$ 442,000	-25.0%	-\$147,000	3	5	66.7%	2
Diamond Hd Region	\$ 717,500	\$ 447,000	-37.7%	-\$270,500	12	12	0.0%	0

Ewa Plain Region	2011 Median	2012 Median	+/-	+/-	2011 Sold	2012 Sold	+/-	+/-
AG/INDL/NAVY	\$ 190,000	\$ 179,000	-5.8%	-\$11,000	1	3	200.0%	2
EWA	\$ 264,500	\$ 242,000	-8.5%	-\$22,500	6	5	-16.7%	-1
EWA BEACH	-	\$ 147,000	-	-	-	2	-	-
EWA GEN	-	\$ 253,000	-	-	-	1	-	-
EWA GEN LOMBARD WAY	\$ 325,000	-	-	-	1	-	-	-
EWA GEN SODA CREEK	\$ 207,500	\$ 217,000	4.6%	\$9,500	2	1	-50.0%	-1
EWA GEN SUN TERRA ON THE PARK	\$ 182,000	\$ 205,000	12.6%	\$23,000	1	1	0.0%	0
HOAKALEI-KA MAKANA	\$ 395,000	\$ 417,500	5.7%	\$22,500	1	2	100.0%	1
KAPOLEI	\$ 335,429	\$ 233,000	-30.5%	-\$102,429	2	4	100.0%	2
KO OLINA	\$ 440,000	\$ 525,000	19.3%	\$85,000	2	3	50.0%	1
OCEAN POINTE	\$ 319,500	\$ 340,000	6.4%	\$20,500	2	3	50.0%	1
WESTLOCH FAIRWAY	-	\$ 215,000	-	-	-	1	-	-
Ewa Plain Region	\$ 300,000	\$ 242,000	-19.3%	-\$58,000	18	26	44.4%	8

Hawaii Kai Region	2011 Median	2012 Median	+/-	+/-	2011 Sold	2012 Sold	+/-	+/-
HAAHIONE-LOWER	\$ 419,500	\$ 432,000	3.0%	\$12,500	6	3	-50.0%	-3
KALAMA VALLEY	\$ 510,000	-	-	-	1	-	-	-
MARINERS VALLEY	\$ 470,000	\$ 465,000	-1.1%	-\$5,000	1	1	0.0%	0
WEST MARINA	\$ 545,000	\$ 581,500	6.7%	\$36,500	10	12	20.0%	2
Hawaii Kai Region	\$ 491,500	\$ 527,000	7.2%	\$35,500	18	16	-11.1%	-2

Kailua Region	2011 Median	2012 Median	+/-	+/-	2011 Sold	2012 Sold	+/-	+/-
AIKAHI PARK	-	\$ 447,000	-	-	-	1	-	-
BLUESTONE	-	\$ 754,500	-	-	-	2	-	-
ENCHANTED LAKE	-	\$ 525,000	-	-	-	1	-	-
KAILUA TOWN	\$ 348,500	\$ 356,250	2.2%	\$7,750	4	2	-50.0%	-2
KOOLAUPOKU	\$ 539,000	-	-	-	1	-	-	-
WAIMANALO	\$ 348,000	-	-	-	1	-	-	-
KUKILAKILA	-	\$ 505,000	-	-	-	1	-	-
Kailua Region	\$ 352,500	\$ 505,000	43.3%	\$152,500	6	7	16.7%	1

Kaneohe Region	2011 Median	2012 Median	+/-	+/-	2011 Sold	2012 Sold	+/-	+/-
COUNTRY CLUB	\$ 499,000	\$ 590,000	18.2%	\$91,000	1	1	0.0%	0
KANEOHE TOWN	\$ 195,000	-	-	-	1	-	-	-
MAHINUI	\$ 368,000	-	-	-	1	-	-	-
PARKWAY	\$ 387,000	-	-	-	1	-	-	-
PUNALUU	\$ 108,450	-	-	-	2	-	-	-
PUUALII	\$ 352,500	-	-	-	2	-	-	-
TEMPLE VALLEY	\$ 387,000	\$ 423,000	9.3%	\$36,000	5	4	-20.0%	-1
WINDWARD ESTATES	\$ 308,500	\$ 392,500	27.2%	\$84,000	4	4	0.0%	0
Kaneohe Region	\$ 361,000	\$ 410,000	13.6%	\$49,000	17	9	-47.1%	-8

Condo Solds - September 2012 vs 2011 (Based on region and neighborhood groupings as listed in MLS) - Page 2 of 3

Leeward Region	2011 Median	2012 Median	+/-	+/-	2011 Sold	2012 Sold	+/-	+/-
MAILI	\$ 79,000	\$ 89,000	12.7%	\$10,000	2	1	-50.0%	-1
WAIANA E	\$ 39,740	\$ 64,000	61.0%	\$24,260	1	2	100.0%	1
MAKAHA	\$ 80,000	\$ 146,750	83.4%	\$66,750	5	4	-20.0%	-1
Leeward Region	\$ 80,000	\$ 90,000	12.5%	\$10,000	8	7	-12.5%	-1

Makakilo Region	2011 Median	2012 Median	+/-	+/-	2011 Sold	2012 Sold	+/-	+/-
MAKAKILO-UPPER	\$ 250,000	\$ 242,500	-3.0%	-\$7,500	9	6	-33.3%	-3
Makakilo Region	\$ 250,000	\$ 242,500	-3.0%	-\$7,500	9	6	-33.3%	-3

Metro Region	2011 Median	2012 Median	+/-	+/-	2011 Sold	2012 Sold	+/-	+/-
ALA MOANA	\$ 191,500	\$ 182,800	-4.5%	-\$8,700	14	10	-28.6%	-4
ALIAMANU	\$ 197,000	-	-	-	1	-	-	-
CHINATOWN	\$ 337,000	\$ 480,000	42.4%	\$143,000	5	5	0.0%	0
DOWNTOWN	\$ 239,000	\$ 314,000	31.4%	\$75,000	10	8	-20.0%	-2
DILLINGHAM	-	\$ 437,500	-	-	-	1	-	-
HOLIDAY MART	\$ 180,000	\$ 280,000	55.6%	\$100,000	7	6	-14.3%	-1
KAKAAKO	\$ 707,500	\$ 680,000	-3.9%	-\$27,500	18	13	-27.8%	-5
KALIHI AREA	\$ 240,000	\$ 235,000	-2.1%	-\$5,000	2	1	-50.0%	-1
KAPAHULU	\$ 300,000	\$ 320,000	6.7%	\$20,000	1	3	200.0%	2
KAPALAMA	\$ 262,500	\$ 189,000	-28.0%	-\$73,500	2	2	0.0%	0
KAPIO/KINAU/WARD	\$ 960,241	\$ 497,500	-48.2%	-\$462,741	4	2	-50.0%	-2
KAPIOLANI	\$ 481,500	\$ 360,000	-25.2%	-\$121,500	14	13	-7.1%	-1
LILIHA	\$ 158,000	\$ 275,000	74.1%	\$117,000	1	1	0.0%	0
MAKIKI	\$ 202,600	\$ 290,000	43.1%	\$87,400	2	1	-50.0%	-1
MAKIKI AREA	\$ 330,000	\$ 349,500	5.9%	\$19,500	18	12	-33.3%	-6
MCCULLY	\$ 150,000	\$ 289,000	92.7%	\$139,000	1	1	0.0%	0
MANOA LOWER	\$ 647,500	-	-	-	2	-	-	-
MOANALUA VALLEY	-	\$ 647,500	-	-	-	2	-	-
MOIILILI	\$ 310,000	\$ 315,000	1.6%	\$5,000	9	11	22.2%	2
NUUANU-LOWER	\$ 775,000	\$ 295,000	-61.9%	-\$480,000	1	4	300.0%	3
PAWAA	\$ 243,000	\$ 179,000	-26.3%	-\$64,000	2	3	50.0%	1
PUNAHOU	-	\$ 144,050	-	-	-	2	-	-
PUNCHBOWL AREA	\$ 250,000	\$ 319,000	27.6%	\$69,000	9	8	-11.1%	-1
PUNCHBOWL-LOWER	\$ 317,500	\$ 228,000	-28.2%	-\$89,500	2	3	50.0%	1
SALT LAKE	\$ 312,500	\$ 363,500	16.3%	\$51,000	16	16	0.0%	0
WAIKIKI	\$ 295,000	\$ 295,000	0.0%	\$0	69	63	-8.7%	-6
Metro Region	\$ 319,750	\$ 325,000	1.6%	\$5,250	210	191	-9.0%	-19

North Shore Region	2011 Median	2012 Median	+/-	+/-	2011 Sold	2012 Sold	+/-	+/-
KUILIMA	\$ 459,250	\$ 335,000	-27.1%	-\$124,250	4	1	-75.0%	-3
WAIALUA	\$ 231,500	\$ 180,500	-22.0%	-\$51,000	2	2	0.0%	0
North Shore Region	\$ 380,750	\$ 222,500	-41.6%	-\$158,250	6	3	-50.0%	-3

Pearl City Region	2011 Median	2012 Median	+/-	+/-	2011 Sold	2012 Sold	+/-	+/-
AIEA AREA	\$ 211,000	-	-	-	1	-	-	-
HALAWA	\$ 265,000	\$ 265,250	0.1%	\$250	5	2	-60.0%	-3
MANANA	\$ 130,000	-	-	-	1	-	-	-
MILITARY	\$ 275,000	-	-	-	3	-	-	-
NEWTOWN	-	\$ 308,000	-	-	-	2	-	-
PEARL CITY-UPPER	\$ 175,000	-	-	-	1	-	-	-
PEARLRIDGE	\$ 317,500	\$ 272,500	-14.2%	-\$45,000	8	12	50.0%	4
WAI AU	\$ 275,000	\$ 178,750	-35.0%	-\$96,250	1	4	300.0%	3
WAILUNA	\$ 469,000	\$ 424,000	-9.6%	-\$45,000	3	4	33.3%	1
Pearl City Region	\$ 302,500	\$ 304,000	0.5%	\$1,500	20	24	20.0%	4

Condo Solds - September 2012 vs 2011 (Based on region and neighborhood groupings as listed in MLS) - Page 3 of 3

Waipahu Region	2011 Median	2012 Median	+/-	+/-	2011 Sold	2012 Sold	+/-	+/-
WAIKELE	\$ 336,000	\$ 315,000	-6.3%	-\$21,000	11	9	-18.2%	-2
ROYAL KUNIA	\$ 259,500	\$ 259,000	-0.2%	-\$500	2	1	-50.0%	-1
WAIPAHU-LOWER	-	\$ 233,000	-	-	-	3	-	-
WAIPIO GENTRY	\$ 255,000	\$ 240,000	-5.9%	-\$15,000	5	7	40.0%	2
Waipahu Region	\$ 316,500	\$ 270,000	-14.7%	-\$46,500	18	20	11.1%	2