

# Local Market Update

## Single Family Homes

### December 2012



December 2012		New Listings			Closed Sales			Median Sales Price			Percent of Original Price Received			Days on Market Until Sale			Inventory of Homes for Sale		
		Dec-12	Dec-11	Change	Dec-12	Dec-11	Change	Dec-12	Dec-11	Change	Dec-12	Dec-11	Change	Dec-12	Dec-11	Change	Dec-12	Dec-11	Change
Aina Haina - Kuliouou	1-3-6 to 1-3-8	8	3	167%	12	8	50%	\$1,100,000	\$747,500	47%	100.0%	91.1%	10%	50	88	-43%	33	29	14%
Ala Moana - Kakaako	1-2-3	0	0	-	0	1	-	\$0	\$700,000	-	0.0%	93.5%	-	0	16	-	1	1	0%
Downtown - Nuuanu	1-1-8 to 1-2-2	1	2	-50%	9	10	-10%	\$710,000	\$760,500	-7%	97.9%	92.9%	5%	59	27	119%	33	31	6%
Ewa Plain	1-9-1	29	28	4%	49	33	48%	\$470,000	\$455,000	3%	99.0%	100.3%	-1%	26	34	-24%	102	96	6%
Hawaii Kai	1-3-9	12	12	0%	20	17	18%	\$1,007,500	\$980,000	3%	98.0%	92.3%	6%	42	57	-26%	49	72	-32%
Kailua - Waimanalo	1-4-1 to Selected 1-4-4	18	26	-31%	24	22	9%	\$824,950	\$837,500	-1%	100.3%	93.5%	7%	13	41	-68%	74	119	-38%
Kalihi - Palama	1-1-2 to 1-1-7	7	5	40%	12	8	50%	\$592,500	\$602,500	-2%	94.4%	92.2%	2%	46	25	84%	45	38	18%
Kaneohe	Selected 1-4-4 to 1-4-7	12	11	9%	8	14	-43%	\$577,500	\$680,000	-15%	96.3%	94.9%	1%	20	71	-72%	74	89	-17%
Kapahulu - Diamond Head	1-3-1 to 1-3-4	17	18	-6%	23	21	10%	\$863,000	\$800,000	8%	98.1%	93.7%	5%	22	27	-19%	64	86	-26%
Makaha - Nanakuli	1-8-1 to 1-8-9	31	31	0%	21	25	-16%	\$369,000	\$360,000	3%	94.6%	95.7%	-1%	59	33	79%	120	102	18%
Makakilo	1-9-2 to 1-9-3	9	15	-40%	10	8	25%	\$597,500	\$507,500	18%	99.7%	95.7%	4%	87	56	55%	37	48	-23%
Makiki - Moiliili	1-2-4 to 1-2-9 (except 1-2-6)	12	4	200%	9	8	13%	\$946,000	\$790,000	20%	99.6%	94.8%	5%	8	48	-83%	40	41	-2%
Mililani	Selected 1-9-4 to 1-9-5	7	12	-42%	15	14	7%	\$565,000	\$599,000	-6%	100.9%	97.9%	3%	24	25	-4%	36	45	-20%
Monalua - Salt Lake	1-1-1	2	5	-60%	1	4	-75%	\$860,000	\$589,950	46%	96.7%	95.5%	1%	95	50	90%	11	12	-8%
North Shore	1-5-6 to 1-6-9	11	14	-21%	4	8	-50%	\$1,372,500	\$675,000	103%	85.4%	88.5%	-4%	73	41	78%	58	76	-24%
Pearl City - Aiea	1-9-6 to 1-9-9	15	16	-6%	21	19	11%	\$540,000	\$532,500	1%	96.6%	93.5%	3%	29	24	21%	63	66	-5%
Wahiawa	1-7-1 to 1-7-7	2	5	-60%	5	8	-38%	\$475,000	\$417,000	14%	111.8%	99.7%	12%	96	16	500%	16	26	-38%
Waialae - Kahala	1-3-5	9	16	-44%	15	9	67%	\$1,285,000	\$1,637,500	-22%	88.6%	92.6%	-4%	39	68	-43%	44	61	-28%
Waikiki	1-2-6	0	0	-	0	0	-	\$0	\$0	-	0.0%	0.0%	-	0	0	-	0	1	-100%
Waipahu	1-9-4	9	30	-70%	31	23	35%	\$524,900	\$480,000	9%	90.7%	95.6%	-5%	22	65	-66%	63	78	-19%
Windward Coast	1-4-8 to 1-5-5	4	4	0%	2	5	-60%	\$552,500	\$320,000	73%	100.1%	88.6%	13%	44	38	16%	41	44	-7%

Year to Date		New Listings			Closed Sales			Median Sales Price			Percent of Original Price Received			Days on Market Until Sale		
		Dec-12	Dec-11	Change	Dec-12	Dec-11	Change	Dec-12	Dec-11	Change	Dec-12	Dec-11	Change	Dec-12	Dec-11	Change
Aina Haina - Kuliouou	1-3-6 to 1-3-8	96	113	-15%	82	75	9%	\$1,005,500	\$1,075,000	-6%	100.7%	92.2%	9%	29	46	-37%
Ala Moana - Kakaako	1-2-3	8	7	14%	9	3	200%	\$785,000	\$700,000	12%	94.7%	92.6%	2%	15	54	-72%
Downtown - Nuuanu	1-1-8 to 1-2-2	105	130	-19%	86	84	2%	\$750,000	\$750,000	0%	96.3%	93.1%	3%	31	41	-24%
Ewa Plain	1-9-1	536	620	-14%	506	451	12%	\$460,400	\$440,000	5%	96.9%	97.9%	-1%	7	31	-77%
Hawaii Kai	1-3-9	199	297	-33%	205	160	28%	\$880,000	\$910,000	-3%	93.0%	95.7%	-3%	37	26	42%
Kailua - Waimanalo	1-4-1 to Selected 1-4-4	307	428	-28%	299	244	23%	\$794,500	\$777,500	2%	96.3%	94.7%	2%	29	35	-17%
Kalihi - Palama	1-1-2 to 1-1-7	131	173	-24%	111	99	12%	\$560,000	\$500,000	12%	95.7%	94.6%	1%	24	30	-20%
Kaneohe	Selected 1-4-4 to 1-4-7	229	344	-33%	180	204	-12%	\$652,500	\$650,000	0%	97.0%	95.0%	2%	28	39	-28%
Kapahulu - Diamond Head	1-3-1 to 1-3-4	252	332	-24%	250	212	18%	\$799,500	\$744,500	7%	95.4%	94.3%	1%	29	27	7%
Makaha - Nanakuli	1-8-1 to 1-8-9	285	397	-28%	214	242	-12%	\$315,000	\$284,950	11%	93.1%	94.8%	-2%	36	26	38%
Makakilo	1-9-2 to 1-9-3	125	173	-28%	109	93	17%	\$575,000	\$510,000	13%	97.9%	96.0%	2%	54	34	59%
Makiki - Moiliili	1-2-4 to 1-2-9 (except 1-2-6)	124	169	-27%	106	101	5%	\$893,350	\$850,000	5%	94.6%	92.5%	2%	21	44	-52%
Mililani	Selected 1-9-4 to 1-9-5	232	253	-8%	241	167	44%	\$590,000	\$590,000	0%	98.3%	96.6%	2%	31	37	-16%
Monalua - Salt Lake	1-1-1	48	78	-38%	45	59	-24%	\$700,500	\$587,500	19%	96.6%	94.0%	3%	22	35	-37%
North Shore	1-5-6 to 1-6-9	114	194	-41%	84	82	2%	\$669,500	\$581,625	15%	92.3%	91.7%	1%	50	61	-18%
Pearl City - Aiea	1-9-6 to 1-9-9	222	279	-20%	206	191	8%	\$583,750	\$570,000	2%	95.7%	95.7%	0%	27	33	-18%
Wahiawa	1-7-1 to 1-7-7	76	93	-18%	63	71	-11%	\$400,000	\$395,000	1%	100.3%	93.3%	8%	21	54	-61%
Waialae - Kahala	1-3-5	126	166	-24%	121	103	17%	\$1,450,000	\$1,335,000	9%	93.2%	92.1%	1%	39	46	-15%
Waikiki	1-2-6	1	2	-50%	1	0	-	\$835,000	\$0	-	92.9%	0.0%	-	42	0	-
Waipahu	1-9-4	204	378	-46%	201	251	-20%	\$500,000	\$507,500	-1%	96.2%	95.9%	0%	26	44	-41%
Windward Coast	1-4-8 to 1-5-5	85	131	-35%	47	57	-18%	\$500,000	\$466,500	7%	91.1%	90.7%	0%	53	45	18%

SOURCE: Honolulu Board of REALTORS®, compiled from MLS data.

# Local Market Update

## Condos

December 2012



December 2012		New Listings			Closed Sales			Median Sales Price			Percent of Original Price Received			Days on Market Until Sale			Inventory of Homes for Sale		
		Dec-12	Dec-11	Change	Dec-12	Dec-11	Change	Dec-12	Dec-11	Change	Dec-12	Dec-11	Change	Dec-12	Dec-11	Change	Dec-12	Dec-11	Change
Aina Haina - Kuliuouou	1-3-6 to 1-3-8	0	0	-	1	0	-	\$530,000	\$0	-	97.2%	0.0%	-	44	0	-	1	1	0%
Ala Moana - Kakaako	1-2-3	39	41	-5%	34	27	26%	\$399,500	\$220,500	81%	92.5%	95.2%	-3%	28	68	-59%	134	172	-22%
Downtown - Nuuanu	1-1-8 to 1-2-2	33	27	22%	16	24	-33%	\$375,000	\$284,500	32%	98.7%	93.5%	6%	16	75	-79%	105	130	-19%
Ewa Plain	1-9-1	24	30	-20%	26	17	53%	\$274,500	\$297,043	-8%	97.4%	99.2%	-2%	26	18	44%	73	78	-6%
Hawaii Kai	1-3-9	13	13	0%	20	13	54%	\$581,250	\$500,000	16%	97.1%	94.9%	2%	35	30	17%	42	62	-32%
Kailua - Waimanalo	1-4-1 to Selected 1-4-4	5	6	-17%	13	6	117%	\$405,000	\$440,250	-8%	101.5%	94.2%	8%	27	61	-56%	17	19	-11%
Kalihi - Palama	1-1-2 to 1-1-7	8	13	-38%	8	5	60%	\$377,500	\$400,000	-6%	97.8%	98.7%	-1%	16	60	-73%	27	41	-34%
Kaneohe	Selected 1-4-4 to 1-4-7	10	4	150%	15	14	7%	\$360,000	\$365,000	-1%	93.4%	96.2%	-3%	17	63	-73%	41	44	-7%
Kapahulu - Diamond Head	1-3-1 to 1-3-4	11	11	0%	10	7	43%	\$528,750	\$565,000	-6%	91.6%	82.5%	11%	30	35	-14%	68	63	8%
Makaha - Nanakuli	1-8-1 to 1-8-9	7	8	-13%	8	19	-58%	\$152,000	\$90,000	69%	90.7%	87.8%	3%	107	68	57%	57	55	4%
Makakilo	1-9-2 to 1-9-3	6	5	20%	6	2	200%	\$231,500	\$307,600	-25%	92.6%	92.3%	0%	35	138	-75%	13	13	0%
Makiki - Moiliili	1-2-4 to 1-2-9 (except 1-2-6)	27	37	-27%	60	39	54%	\$330,000	\$282,500	17%	97.3%	90.6%	7%	26	37	-30%	168	186	-10%
Mililani	Selected 1-9-4 to 1-9-5	15	16	-6%	24	22	9%	\$327,500	\$248,710	32%	97.8%	94.5%	3%	13	44	-70%	54	43	26%
Monalua - Salt Lake	1-1-1	10	15	-33%	18	16	13%	\$270,000	\$265,000	2%	98.7%	93.9%	5%	14	67	-79%	41	47	-13%
North Shore	1-5-6 to 1-6-9	2	6	-67%	5	7	-29%	\$395,000	\$350,777	13%	100.5%	94.1%	7%	9	59	-85%	25	28	-11%
Pearl City - Aiea	1-9-6 to 1-9-9	16	24	-33%	28	22	27%	\$326,000	\$291,250	12%	102.8%	92.0%	12%	26	69	-62%	70	90	-22%
Wahiawa	1-7-1 to 1-7-7	1	1	0%	0	5	-	\$0	\$118,000	-	0.0%	87.8%	-	0	54	-	9	6	50%
Waialae - Kahala	1-3-5	2	3	-33%	4	3	33%	\$585,000	\$515,000	14%	94.7%	99.7%	-5%	37	10	270%	17	14	21%
Waikiki	1-2-6	81	107	-24%	95	63	51%	\$300,000	\$290,000	3%	90.9%	92.0%	-1%	49	63	-22%	465	503	-8%
Waipahu	1-9-4	11	22	-50%	9	20	-55%	\$275,000	\$242,500	13%	96.5%	97.0%	-1%	11	25	-56%	43	69	-38%
Windward Coast	1-4-8 to 1-5-5	0	3	-100%	1	1	-	\$160,000	\$293,500	-45%	86.5%	83.9%	3%	64	118	-46%	8	16	-50%

Year to Date		New Listings			Closed Sales			Median Sales Price			Percent of Original Price Received			Days on Market Until Sale		
		Dec-12	Dec-11	Change	Dec-12	Dec-11	Change	Dec-12	Dec-11	Change	Dec-12	Dec-11	Change	Dec-12	Dec-11	Change
Aina Haina - Kuliuouou	1-3-6 to 1-3-8	4	7	-43%	6	8	-25%	\$510,000	\$545,000	-6%	95.8%	97.1%	-1%	43	71	-39%
Ala Moana - Kakaako	1-2-3	365	604	-40%	403	388	4%	\$355,000	\$350,000	1%	98.6%	94.8%	4%	34	43	-21%
Downtown - Nuuanu	1-1-8 to 1-2-2	301	490	-39%	292	289	1%	\$381,500	\$370,000	3%	97.9%	94.1%	4%	31	49	-37%
Ewa Plain	1-9-1	246	361	-32%	287	274	5%	\$310,000	\$300,000	3%	98.4%	98.6%	0%	23	33	-30%
Hawaii Kai	1-3-9	151	282	-46%	198	178	11%	\$525,000	\$507,950	3%	95.7%	95.7%	0%	40	35	14%
Kailua - Waimanalo	1-4-1 to Selected 1-4-4	85	108	-21%	119	76	57%	\$415,000	\$383,000	8%	97.0%	96.6%	0%	25	36	-31%
Kalihi - Palama	1-1-2 to 1-1-7	92	162	-43%	104	94	11%	\$329,000	\$250,000	32%	95.5%	95.3%	0%	30	36	-17%
Kaneohe	Selected 1-4-4 to 1-4-7	135	217	-38%	151	151	0%	\$401,000	\$371,500	8%	98.0%	95.0%	3%	23	52	-56%
Kapahulu - Diamond Head	1-3-1 to 1-3-4	114	157	-27%	83	83	0%	\$465,000	\$450,000	3%	93.4%	93.4%	0%	35	59	-41%
Makaha - Nanakuli	1-8-1 to 1-8-9	109	190	-43%	85	101	-16%	\$90,000	\$89,000	1%	90.9%	91.0%	0%	48	41	17%
Makakilo	1-9-2 to 1-9-3	84	99	-15%	86	72	19%	\$255,000	\$250,000	2%	98.9%	95.5%	4%	18	41	-56%
Makiki - Moiliili	1-2-4 to 1-2-9 (except 1-2-6)	500	847	-41%	551	490	12%	\$315,000	\$300,000	5%	95.7%	94.1%	2%	31	38	-18%
Mililani	Selected 1-9-4 to 1-9-5	255	272	-6%	297	224	33%	\$289,000	\$254,500	14%	98.0%	95.2%	3%	25	38	-34%
Monalua - Salt Lake	1-1-1	180	254	-29%	209	168	24%	\$275,000	\$280,000	-2%	95.5%	95.4%	0%	18	40	-55%
North Shore	1-5-6 to 1-6-9	41	71	-42%	32	40	-20%	\$300,000	\$285,000	5%	94.0%	90.3%	4%	59	50	18%
Pearl City - Aiea	1-9-6 to 1-9-9	239	395	-39%	284	273	4%	\$275,000	\$273,000	1%	97.5%	94.7%	3%	36	44	-18%
Wahiawa	1-7-1 to 1-7-7	18	23	-22%	10	15	-33%	\$108,000	\$125,000	-14%	88.2%	88.1%	0%	70	74	-5%
Waialae - Kahala	1-3-5	50	63	-21%	49	38	29%	\$450,000	\$450,000	0%	97.9%	94.6%	3%	25	22	14%
Waikiki	1-2-6	967	1509	-36%	924	810	14%	\$365,000	\$285,000	28%	98.0%	93.3%	5%	43	43	0%
Waipahu	1-9-4	179	333	-46%	181	235	-23%	\$250,000	\$257,500	-3%	95.4%	95.6%	0%	25	38	-34%
Windward Coast	1-4-8 to 1-5-5	16	30	-47%	10	13	-23%	\$180,000	\$203,500	-12%	97.3%	86.3%	13%	57	83	-31%

SOURCE: Honolulu Board of REALTORS®, compiled from MLS data.

# Local Market Update

December 2012

**Aina Haina - Kuliouou**

(1-3-6 to 1-3-8)

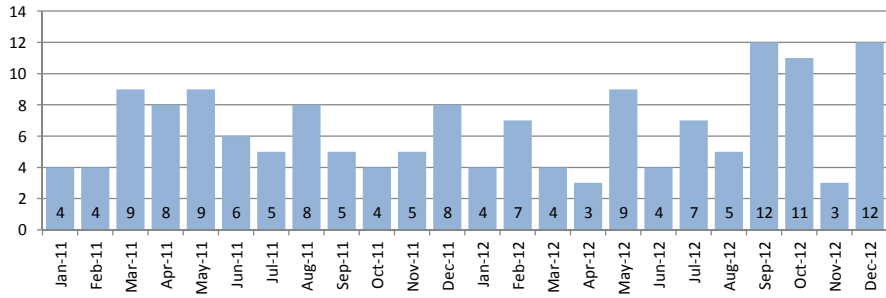


December 2012

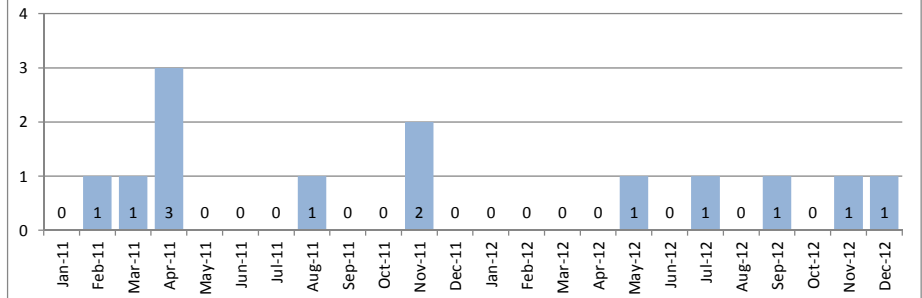
Single Family Homes	December			Year to Date		
	2012	2011	Change	2012	2011	Change
New Listings	8	3	167%	96	113	-15%
Closed Sales	12	8	50%	82	75	9%
Median Sales Price	\$1,100,000	\$747,500	47%	\$1,005,500	\$1,075,000	-6%
Percent of Original List Price Received	100.0%	91.1%	10%	100.7%	92.2%	9%
Median Days on Market Until Sale	50	88	-43%	29	46	-37%
Inventory of Homes for Sale	33	29	14%	--	--	--

Condos	December			Year to Date		
	2012	2011	Change	2012	2011	Change
New Listings	0	0	-	4	7	-43%
Closed Sales	1	0	-	6	8	-25%
Median Sales Price	\$530,000	\$0	-	\$510,000	\$545,000	-6%
Percent of Original List Price Received	97.2%	0.0%	-	95.8%	97.1%	-1%
Median Days on Market Until Sale	44	0	-	43	71	-39%
Inventory of Homes for Sale	1	1	0%	--	--	--

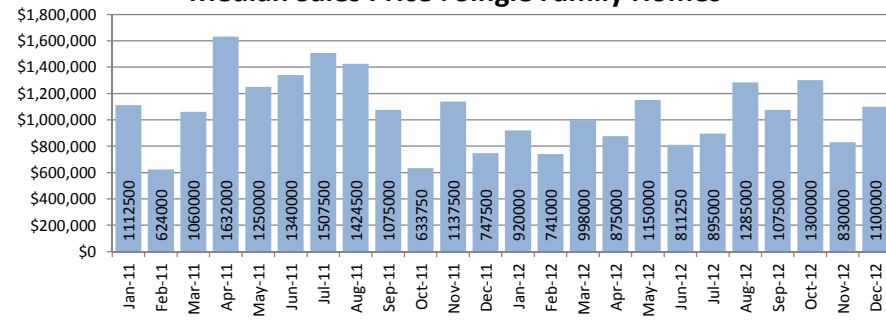
**Closed Sales : Single Family Homes**



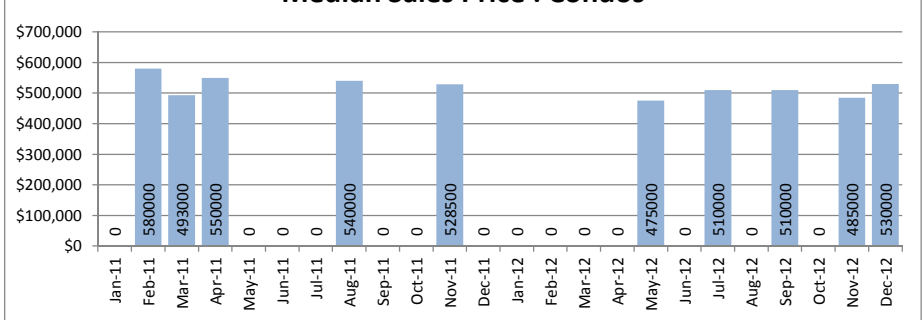
**Closed Sales : Condos**



**Median Sales Price : Single Family Homes**



**Median Sales Price : Condos**



SOURCE: Honolulu Board of REALTORS®, compiled from MLS data.

# Local Market Update

December 2012

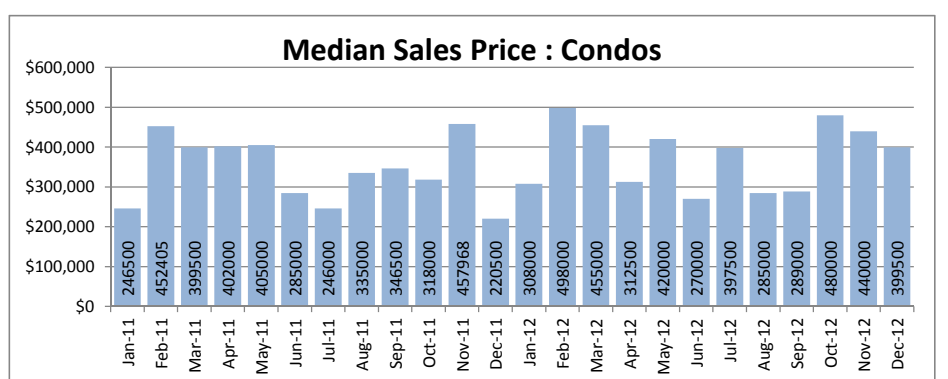
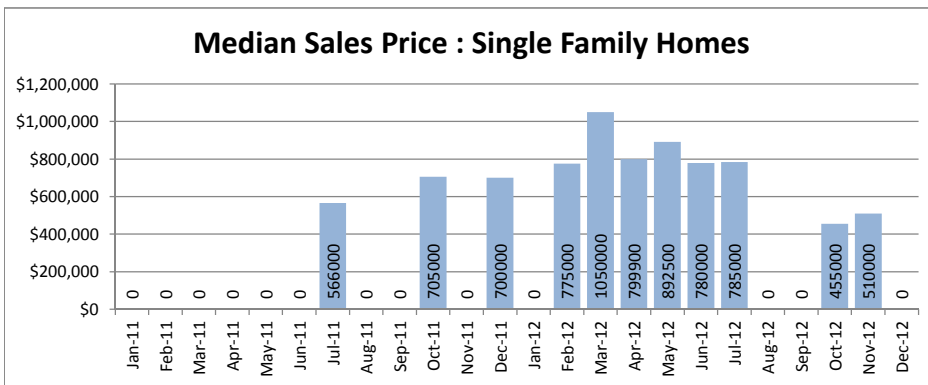
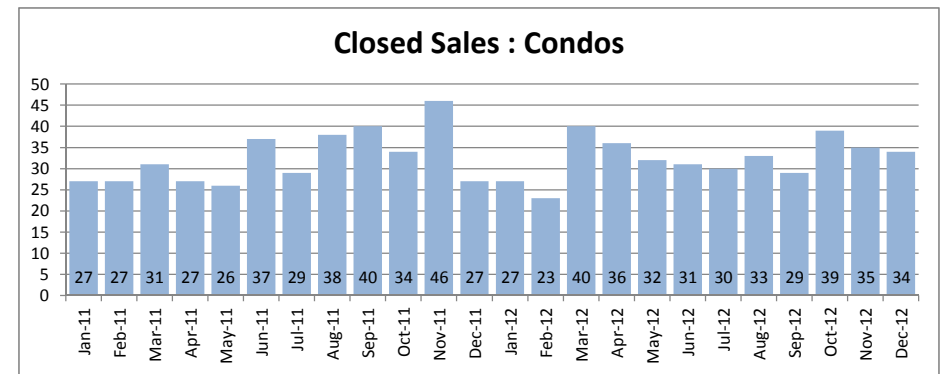
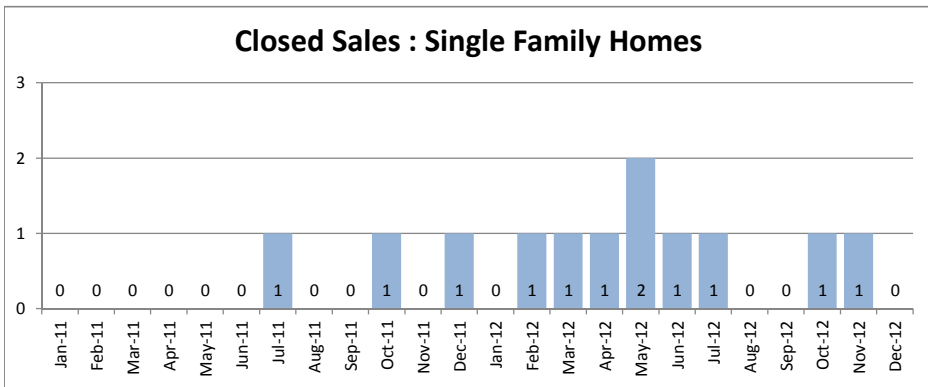


**Ala Moana - Kakaako**  
(1-2-3)

December 2012

Single Family Homes	December			Year to Date		
	2012	2011	Change	2012	2011	Change
New Listings	0	0	-	8	7	14%
Closed Sales	0	1	-	9	3	200%
Median Sales Price	\$0	\$700,000	-	\$785,000	\$700,000	12%
Percent of Original List Price Received	0.0%	93.5%	-	94.7%	92.6%	2%
Median Days on Market Until Sale	0	16	-	15	54	-72%
Inventory of Homes for Sale	1	1	0%	--	--	--

Condos	December			Year to Date		
	2012	2011	Change	2012	2011	Change
New Listings	39	41	-5%	365	604	-40%
Closed Sales	34	27	26%	403	388	4%
Median Sales Price	\$399,500	\$220,500	81%	\$355,000	\$350,000	1%
Percent of Original List Price Received	92.5%	95.2%	-3%	98.6%	94.8%	4%
Median Days on Market Until Sale	28	68	-59%	34	43	-21%
Inventory of Homes for Sale	134	172	-22%	--	--	--



SOURCE: Honolulu Board of REALTORS®, compiled from MLS data.

# Local Market Update

December 2012

**Downtown - Nuuanu**

1-1-8 to 1-2-2

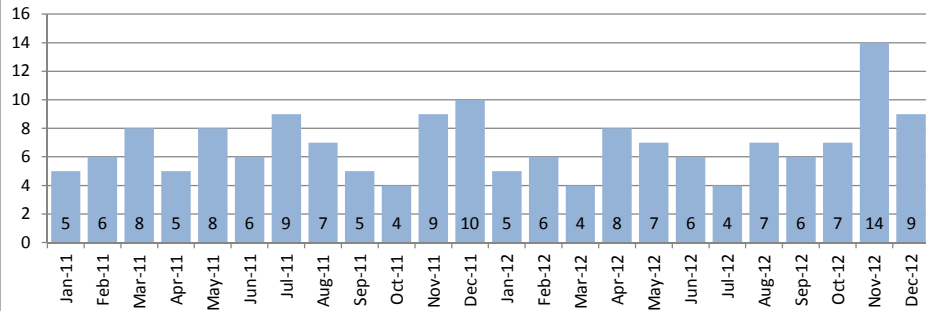


December 2012

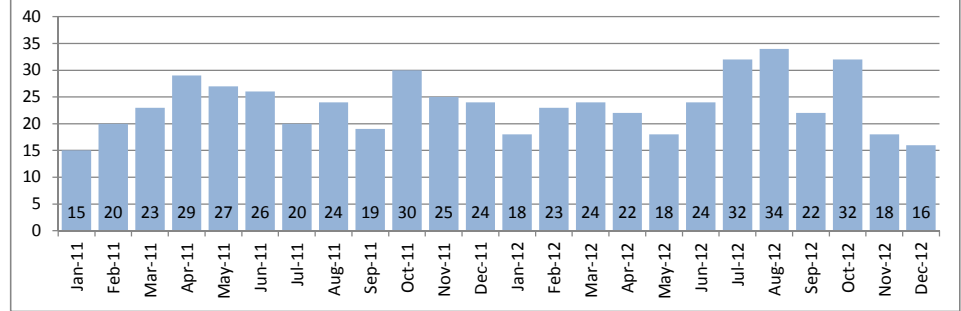
Single Family Homes	December			Year to Date		
	2012	2011	Change	2012	2011	Change
New Listings	1	2	-50%	105	130	-19%
Closed Sales	9	10	-10%	86	84	2%
Median Sales Price	\$710,000	\$760,500	-7%	\$750,000	\$750,000	0%
Percent of Original List Price Received	97.9%	92.9%	5%	96.3%	93.1%	3%
Median Days on Market Until Sale	59	27	119%	31	41	-24%
Inventory of Homes for Sale	33	31	6%	--	--	--

Condos	December			Year to Date		
	2012	2011	Change	2012	2011	Change
New Listings	33	27	22%	301	490	-39%
Closed Sales	16	24	-33%	292	289	1%
Median Sales Price	\$375,000	\$284,500	32%	\$381,500	\$370,000	3%
Percent of Original List Price Received	98.7%	93.5%	6%	97.9%	94.1%	4%
Median Days on Market Until Sale	16	75	-79%	31	49	-37%
Inventory of Homes for Sale	105	130	-19%	--	--	--

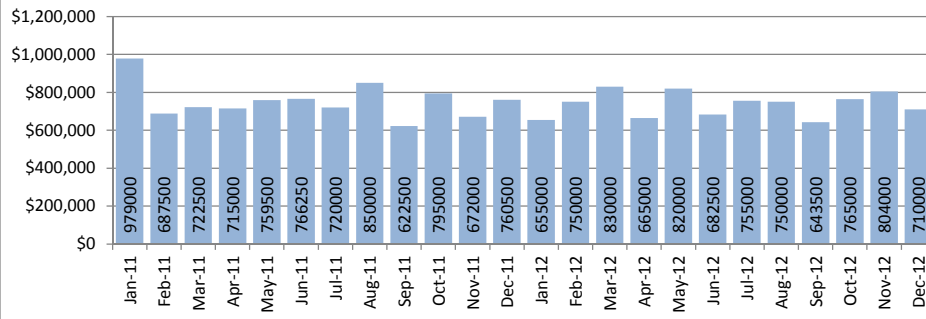
**Closed Sales : Single Family Homes**



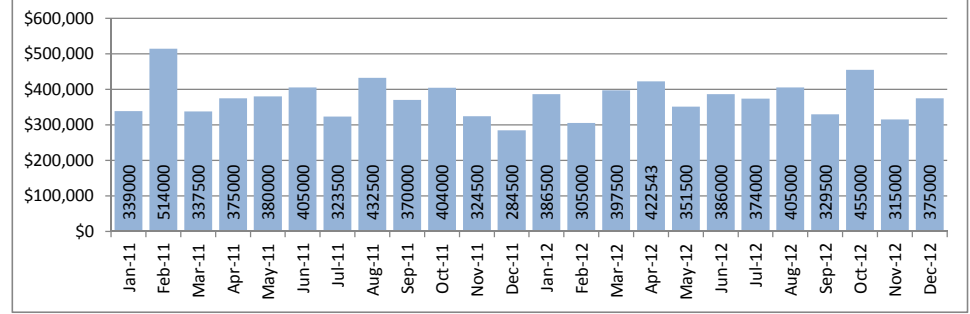
**Closed Sales : Condos**



**Median Sales Price : Single Family Homes**



**Median Sales Price : Condos**



SOURCE: Honolulu Board of REALTORS®, compiled from MLS data.

# Local Market Update

December 2012

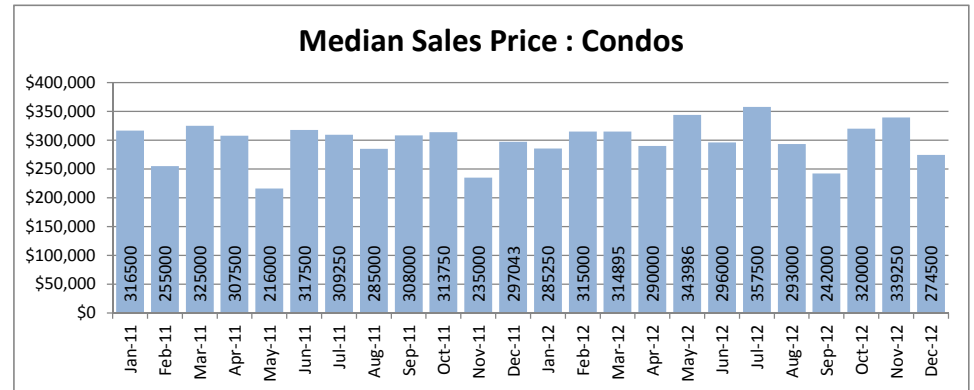
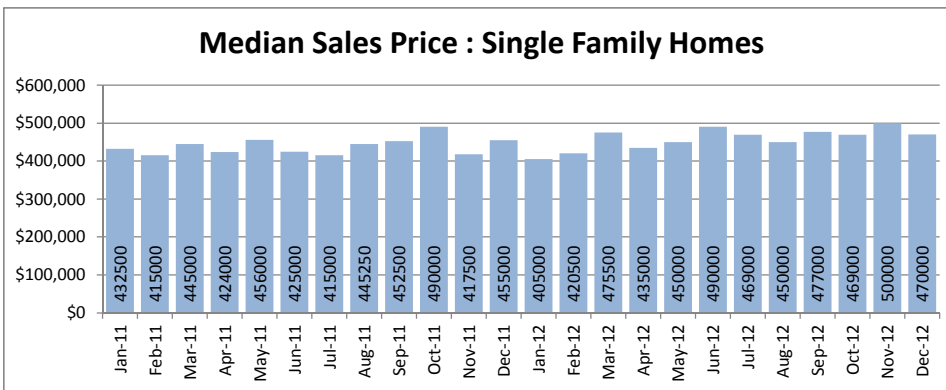
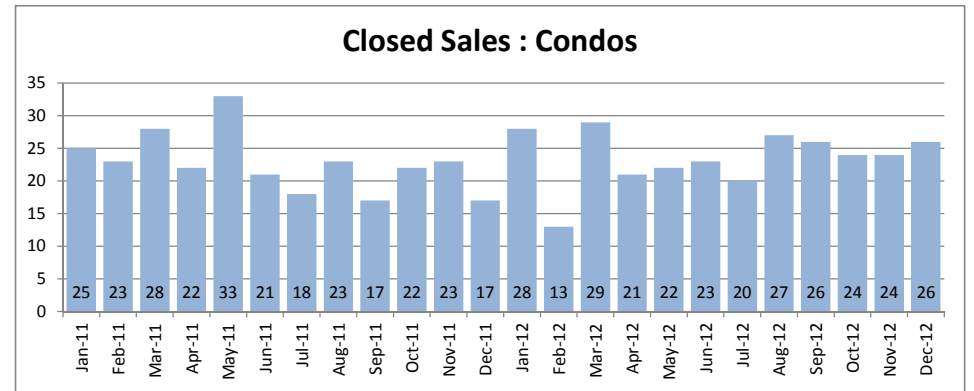
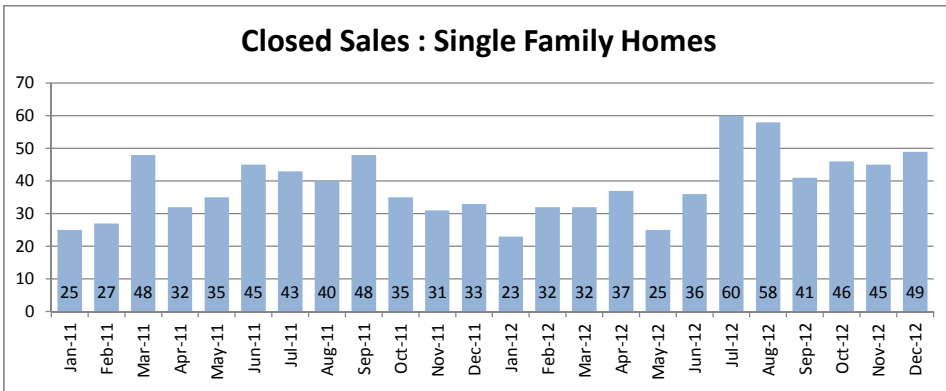


<b>Ewa Plain</b>
<b>1-9-1</b>

December 2012

Single Family Homes	December			Year to Date		
	2012	2011	Change	2012	2011	Change
New Listings	29	28	4%	536	620	-14%
Closed Sales	49	33	48%	506	451	12%
Median Sales Price	\$470,000	\$455,000	3%	\$460,400	\$440,000	5%
Percent of Original List Price Received	99.0%	100.3%	-1%	96.9%	97.9%	-1%
Median Days on Market Until Sale	26	34	-24%	7	31	-77%
Inventory of Homes for Sale	102	96	6%	--	--	--

Condos	December			Year to Date		
	2012	2011	Change	2012	2011	Change
New Listings	24	30	-20%	246	361	-32%
Closed Sales	26	17	53%	287	274	5%
Median Sales Price	\$274,500	\$297,043	-8%	\$310,000	\$300,000	3%
Percent of Original List Price Received	97.4%	99.2%	-2%	98.4%	98.6%	0%
Median Days on Market Until Sale	26	18	44%	23	33	-30%
Inventory of Homes for Sale	73	78	-6%	--	--	--



SOURCE: Honolulu Board of REALTORS®, compiled from MLS data.

# Local Market Update

## December 2012

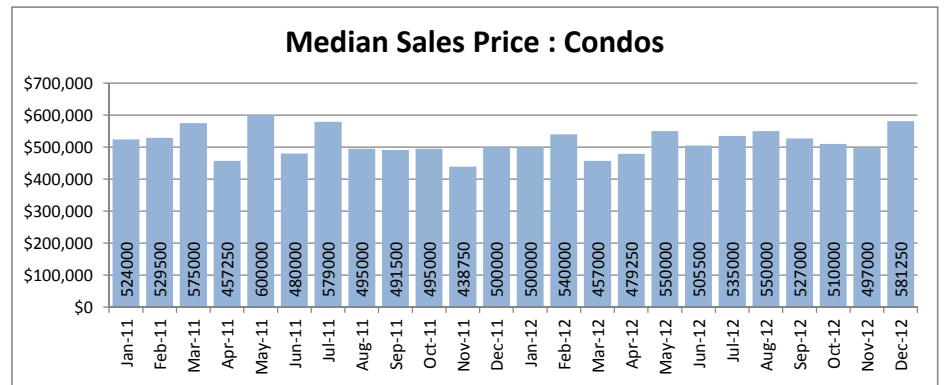
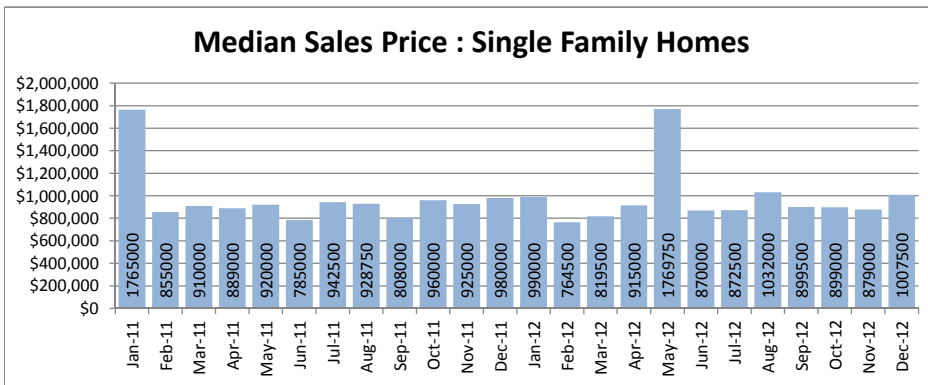
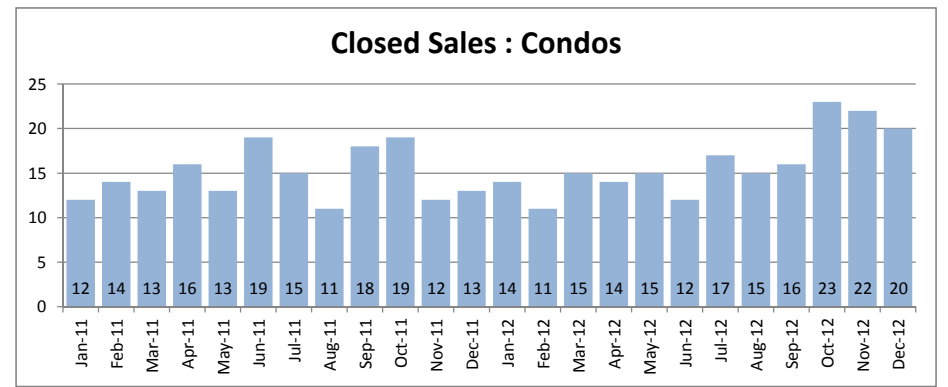
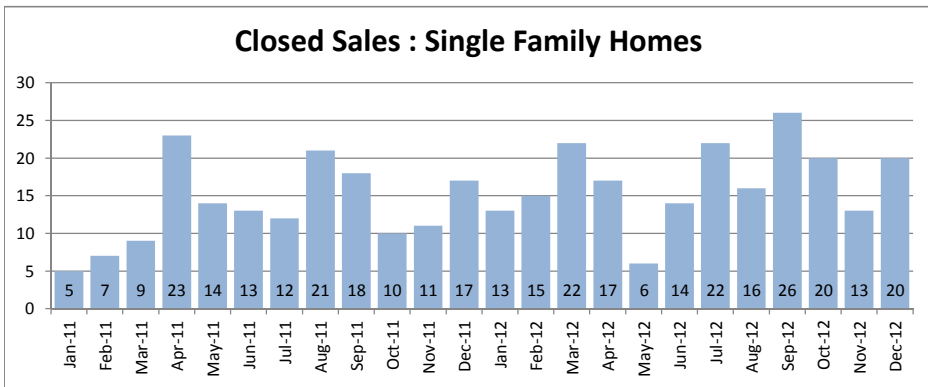


<b>Hawaii Kai</b>
<b>1-3-9</b>

December 2012

Single Family Homes	December			Year to Date		
	2012	2011	Change	2012	2011	Change
New Listings	12	12	0%	199	297	-33%
Closed Sales	20	17	18%	205	160	28%
Median Sales Price	\$1,007,500	\$980,000	3%	\$880,000	\$910,000	-3%
Percent of Original List Price Received	98.0%	92.3%	6%	93.0%	95.7%	-3%
Median Days on Market Until Sale	42	57	-26%	37	26	42%
Inventory of Homes for Sale	49	72	-32%	--	--	--

Condos	December			Year to Date		
	2012	2011	Change	2012	2011	Change
New Listings	13	13	0%	151	282	-46%
Closed Sales	20	13	54%	198	178	11%
Median Sales Price	\$581,250	\$500,000	16%	\$525,000	\$507,950	3%
Percent of Original List Price Received	97.1%	94.9%	2%	95.7%	95.7%	0%
Median Days on Market Until Sale	35	30	17%	40	35	14%
Inventory of Homes for Sale	42	62	-32%	--	--	--



**SOURCE: Honolulu Board of REALTORS® , compiled from MLS data.**

# Local Market Update

December 2012

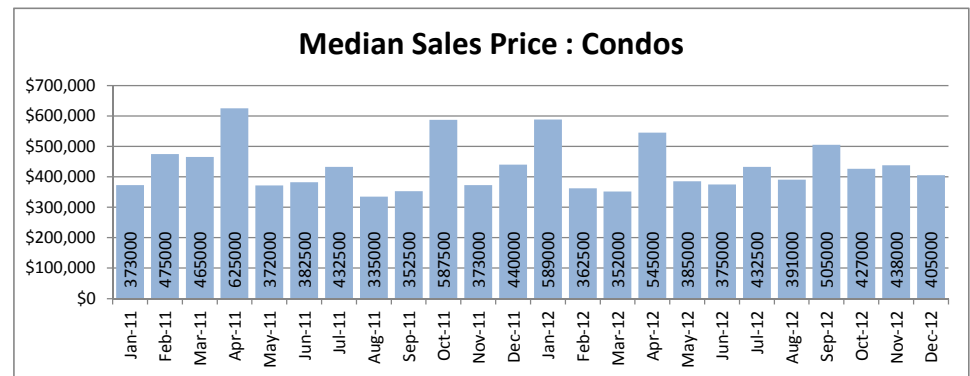
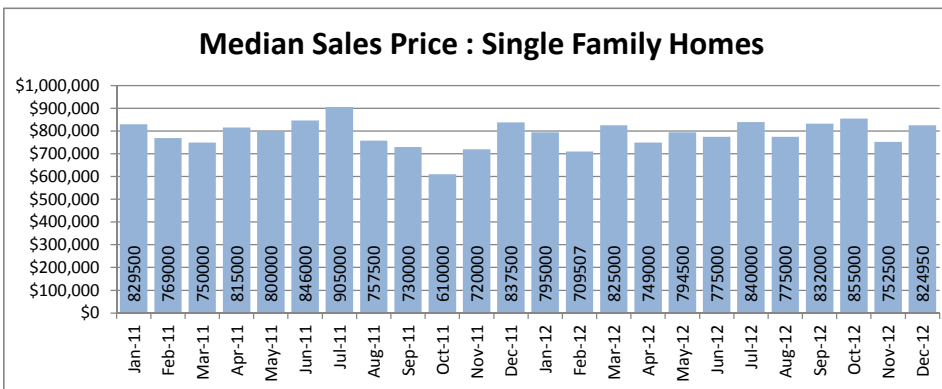
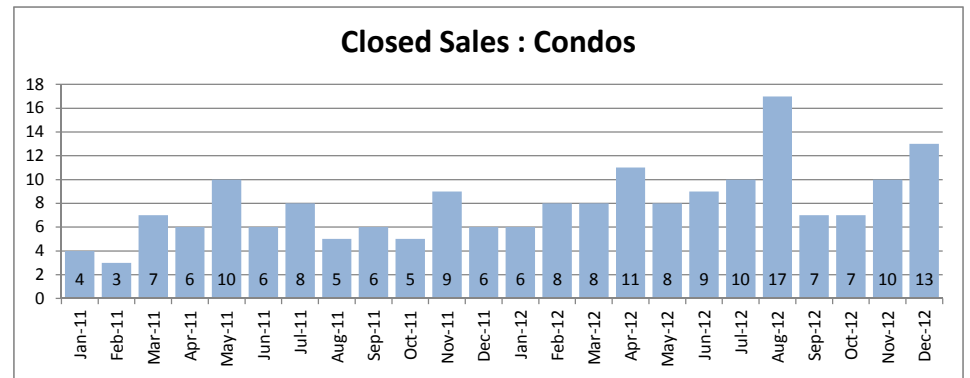
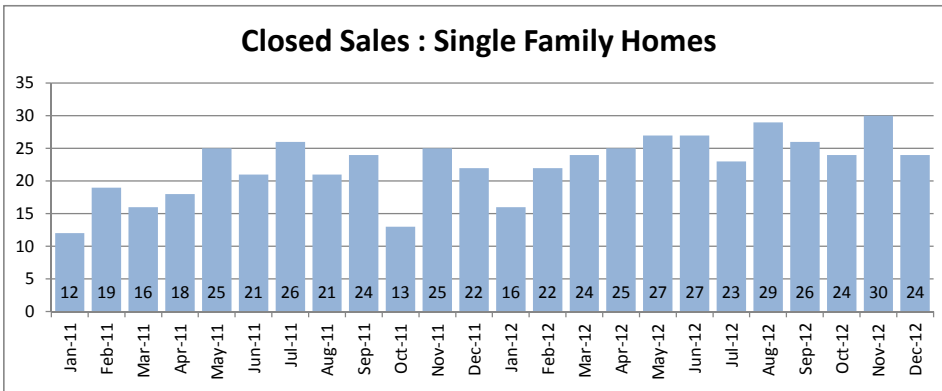


**Kailua - Waimanalo**  
1-4-1 to Selected 1-4-4

December 2012

Single Family Homes	December			Year to Date		
	2012	2011	Change	2012	2011	Change
New Listings	18	26	-31%	307	428	-28%
Closed Sales	24	22	9%	299	244	23%
Median Sales Price	\$824,950	\$837,500	-1%	\$794,500	\$777,500	2%
Percent of Original List Price Received	100.3%	93.5%	7%	96.3%	94.7%	2%
Median Days on Market Until Sale	13	41	-68%	29	35	-17%
Inventory of Homes for Sale	74	119	-38%	--	--	--

Condos	December			Year to Date		
	2012	2011	Change	2012	2011	Change
New Listings	5	6	-17%	85	108	-21%
Closed Sales	13	6	117%	119	76	57%
Median Sales Price	\$405,000	\$440,250	-8%	\$415,000	\$383,000	8%
Percent of Original List Price Received	101.5%	94.2%	8%	97.0%	96.6%	0%
Median Days on Market Until Sale	27	61	-56%	25	36	-31%
Inventory of Homes for Sale	17	19	-11%	--	--	--



SOURCE: Honolulu Board of REALTORS®, compiled from MLS data.



# Local Market Update

December 2012



**Kalihi - Palama**

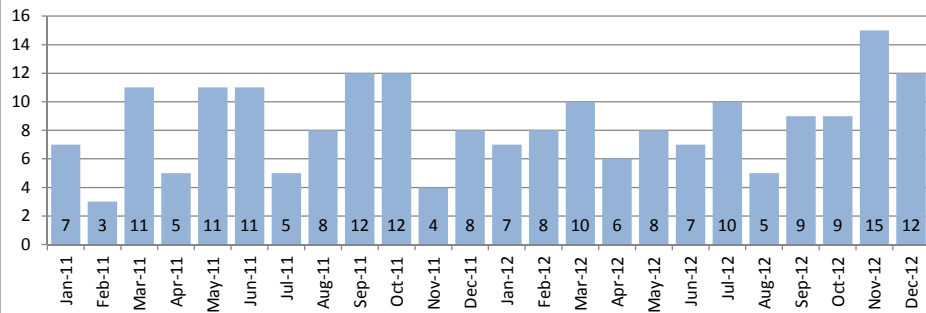
1-1-2 to 1-1-7

December 2012

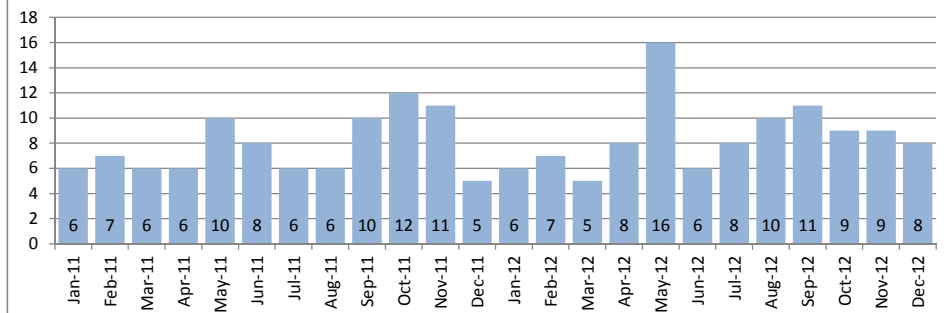
Single Family Homes	December			Year to Date		
	2012	2011	Change	2012	2011	Change
New Listings	7	5	40%	131	173	-24%
Closed Sales	12	8	50%	111	99	12%
Median Sales Price	\$592,500	\$602,500	-2%	\$560,000	\$500,000	12%
Percent of Original List Price Received	94.4%	92.2%	2%	95.7%	94.6%	1%
Median Days on Market Until Sale	46	25	84%	24	30	-20%
Inventory of Homes for Sale	45	38	18%	--	--	--

Condos	December			Year to Date		
	2012	2011	Change	2012	2011	Change
New Listings	8	13	-38%	92	162	-43%
Closed Sales	8	5	60%	104	94	11%
Median Sales Price	\$377,500	\$400,000	-6%	\$329,000	\$250,000	32%
Percent of Original List Price Received	97.8%	98.7%	-1%	95.5%	95.3%	0%
Median Days on Market Until Sale	16	60	-73%	30	36	-17%
Inventory of Homes for Sale	27	41	-34%	--	--	--

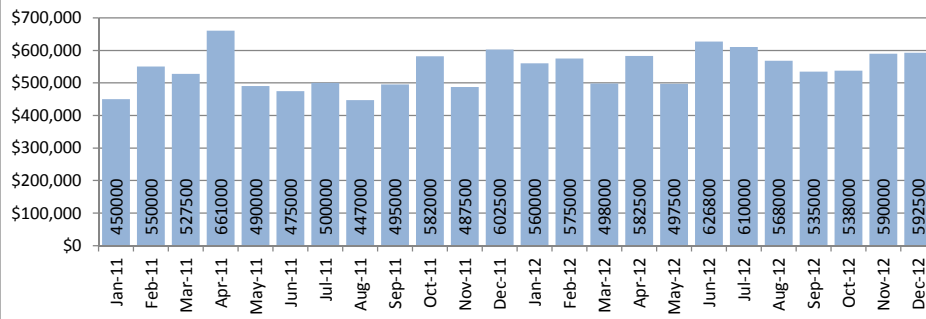
**Closed Sales : Single Family Homes**



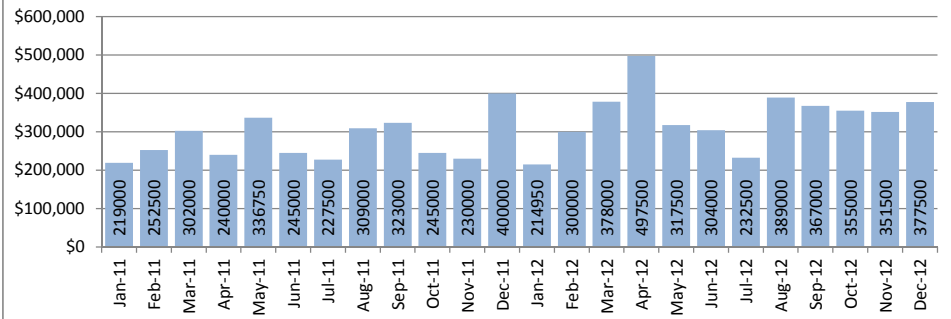
**Closed Sales : Condos**



**Median Sales Price : Single Family Homes**



**Median Sales Price : Condos**



**SOURCE: Honolulu Board of REALTORS® , compiled from MLS data.**

# Local Market Update

December 2012

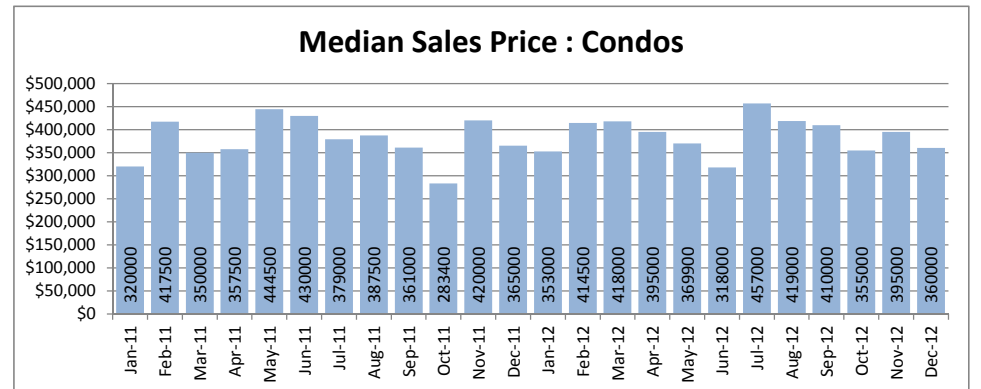
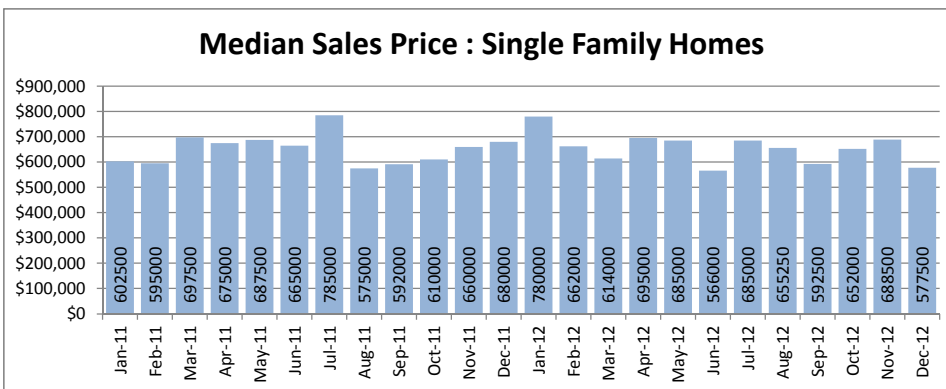
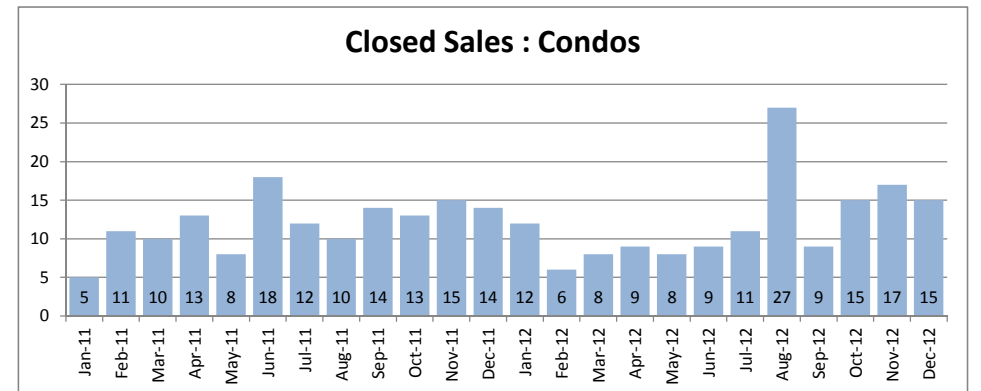
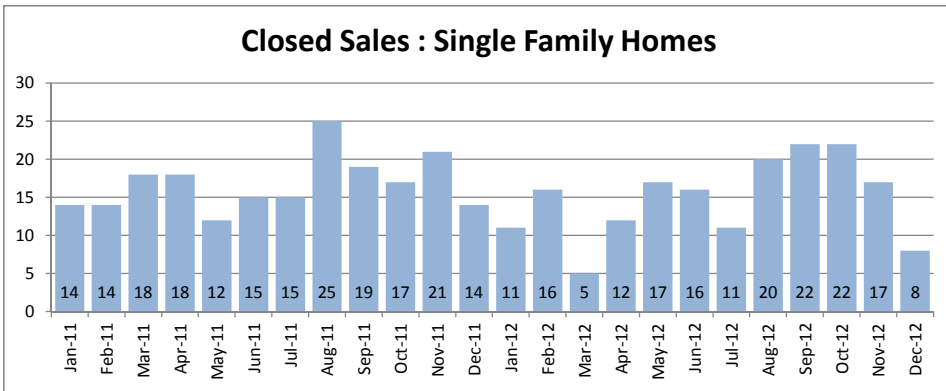


<b>Kaneohe</b>
Selected 1-4-4 to 1-4-7

December 2012

Single Family Homes	December			Year to Date		
	2012	2011	Change	2012	2011	Change
New Listings	12	11	9%	229	344	-33%
Closed Sales	8	14	-43%	180	204	-12%
Median Sales Price	\$577,500	\$680,000	-15%	\$652,500	\$650,000	0%
Percent of Original List Price Received	96.3%	94.9%	1%	97.0%	95.0%	2%
Median Days on Market Until Sale	20	71	-72%	28	39	-28%
Inventory of Homes for Sale	74	89	-17%	--	--	--

Condos	December			Year to Date		
	2012	2011	Change	2012	2011	Change
New Listings	10	4	150%	135	217	-38%
Closed Sales	15	14	7%	151	151	0%
Median Sales Price	\$360,000	\$365,000	-1%	\$401,000	\$371,500	8%
Percent of Original List Price Received	93.4%	96.2%	-3%	98.0%	95.0%	3%
Median Days on Market Until Sale	17	63	-73%	23	52	-56%
Inventory of Homes for Sale	41	44	-7%	--	--	--



SOURCE: Honolulu Board of REALTORS®, compiled from MLS data.

# Local Market Update

December 2012

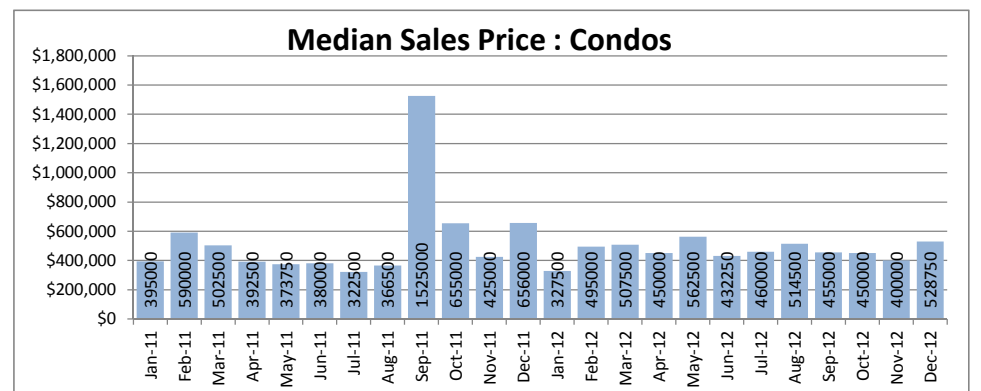
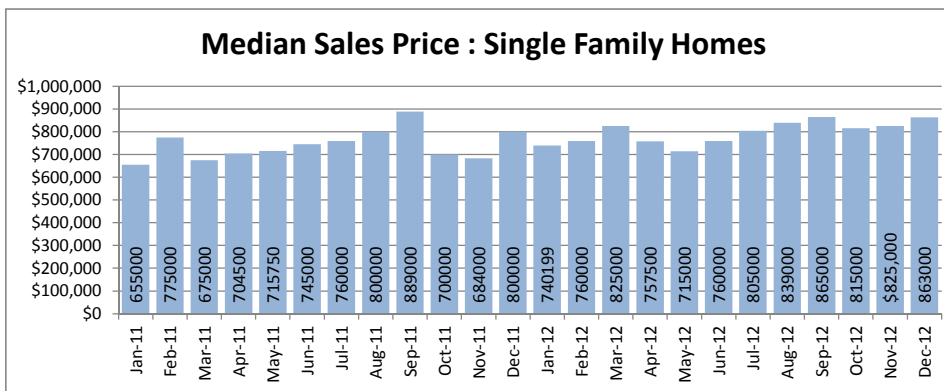
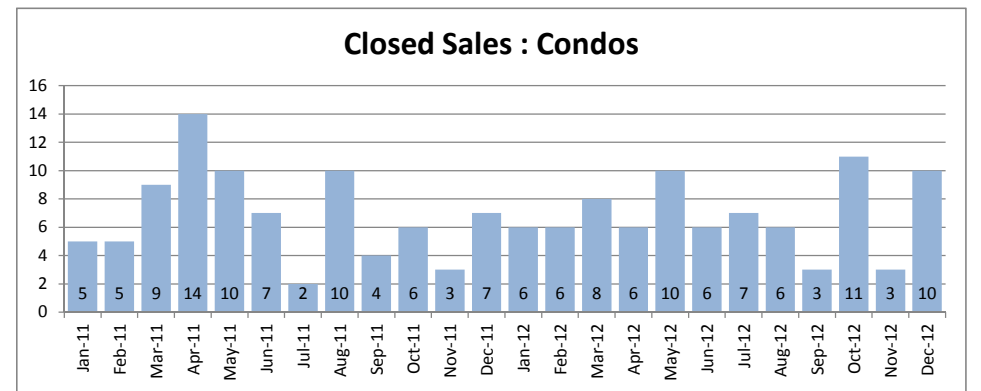
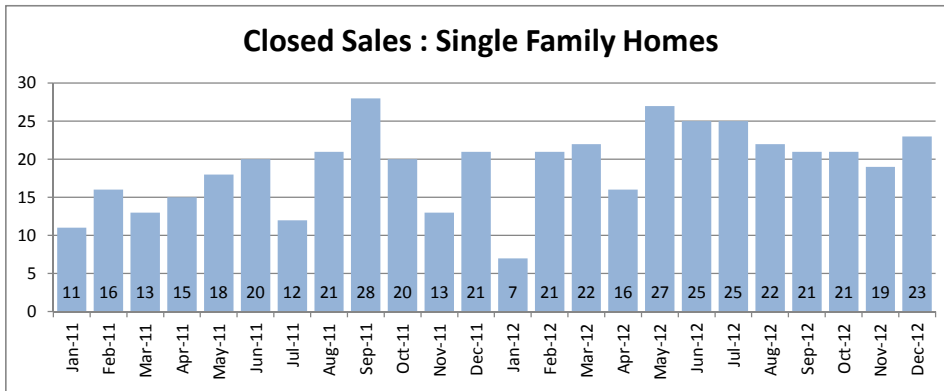


**Kapahulu - Diamond Head**  
1-3-1 to 1-3-4

December 2012

Single Family Homes	December			Year to Date		
	2012	2011	Change	2012	2011	Change
New Listings	17	18	-6%	252	332	-24%
Closed Sales	23	21	10%	250	212	18%
Median Sales Price	\$863,000	\$800,000	8%	\$799,500	\$744,500	7%
Percent of Original List Price Received	98.1%	93.7%	5%	95.4%	94.3%	1%
Median Days on Market Until Sale	22	27	-19%	29	27	7%
Inventory of Homes for Sale	64	86	-26%	--	--	--

Condos	December			Year to Date		
	2012	2011	Change	2012	2011	Change
New Listings	11	11	0%	114	157	-27%
Closed Sales	10	7	43%	83	83	0%
Median Sales Price	\$528,750	\$565,000	-6%	\$465,000	\$450,000	3%
Percent of Original List Price Received	91.6%	82.5%	11%	93.4%	93.4%	0%
Median Days on Market Until Sale	30	35	-14%	35	59	-41%
Inventory of Homes for Sale	68	63	8%	--	--	--



SOURCE: Honolulu Board of REALTORS®, compiled from MLS data.

# Local Market Update

December 2012



**Makaha - Nanakuli**

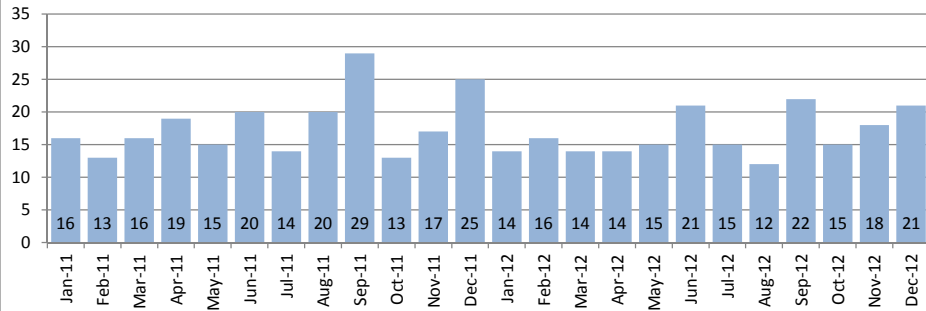
1-8-1 to 1-8-9

December 2012

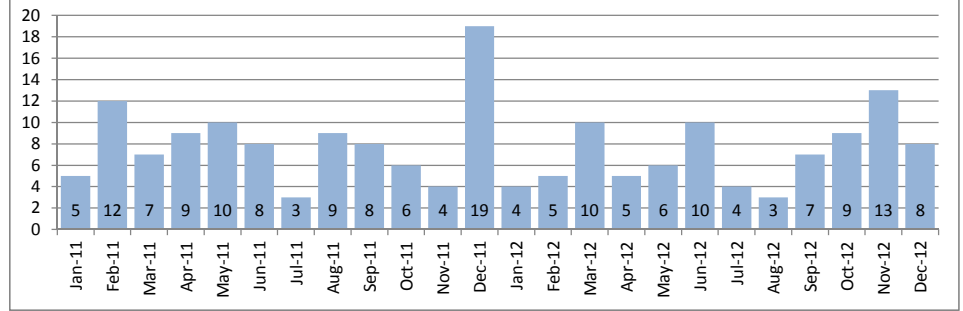
Single Family Homes	December			Year to Date		
	2012	2011	Change	2012	2011	Change
New Listings	31	31	0%	285	397	-28%
Closed Sales	21	25	-16%	214	242	-12%
Median Sales Price	\$369,000	\$360,000	3%	\$315,000	\$284,950	11%
Percent of Original List Price Received	94.6%	95.7%	-1%	93.1%	94.8%	-2%
Median Days on Market Until Sale	59	33	79%	36	26	38%
Inventory of Homes for Sale	120	102	18%	--	--	--

Condos	December			Year to Date		
	2012	2011	Change	2012	2011	Change
New Listings	7	8	-13%	109	190	-43%
Closed Sales	8	19	-58%	85	101	-16%
Median Sales Price	\$152,000	\$90,000	69%	\$90,000	\$89,000	1%
Percent of Original List Price Received	90.7%	87.8%	3%	90.9%	91.0%	0%
Median Days on Market Until Sale	107	68	57%	48	41	17%
Inventory of Homes for Sale	57	55	4%	--	--	--

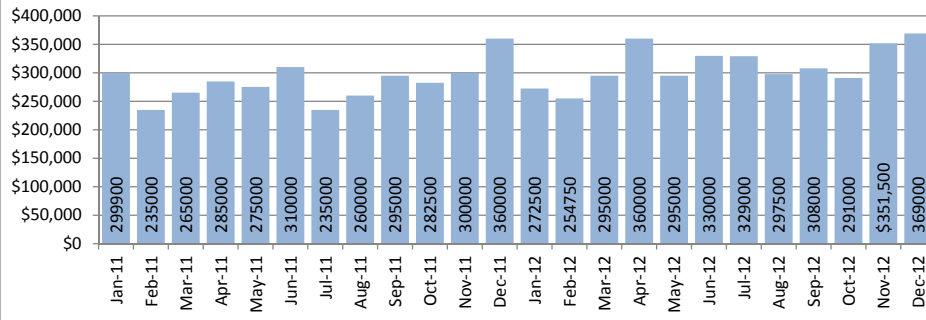
**Closed Sales : Single Family Homes**



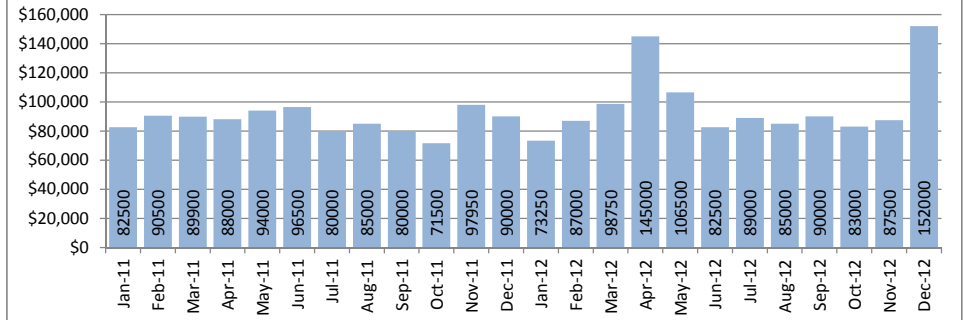
**Closed Sales : Condos**



**Median Sales Price : Single Family Homes**



**Median Sales Price : Condos**



**SOURCE: Honolulu Board of REALTORS® , compiled from MLS data.**

# Local Market Update

December 2012

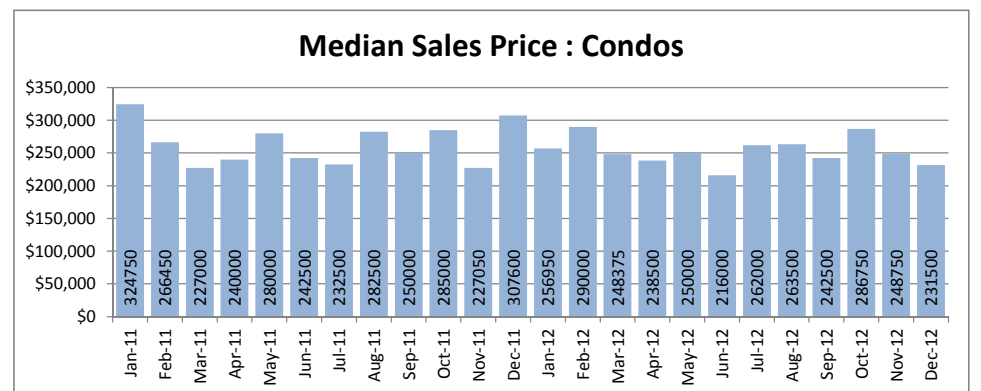
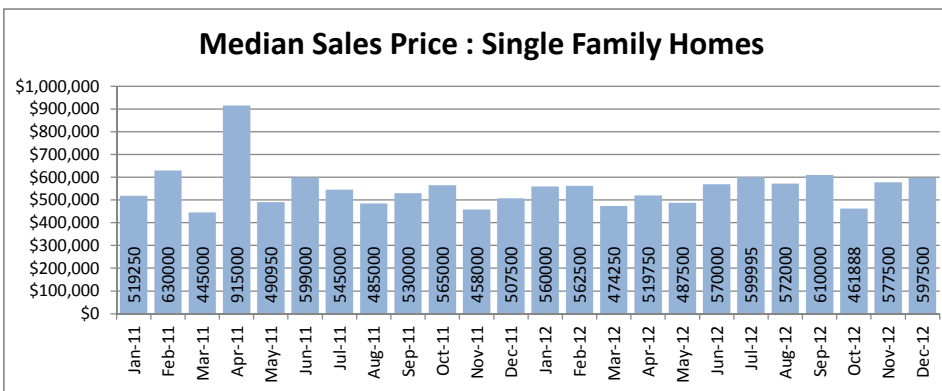
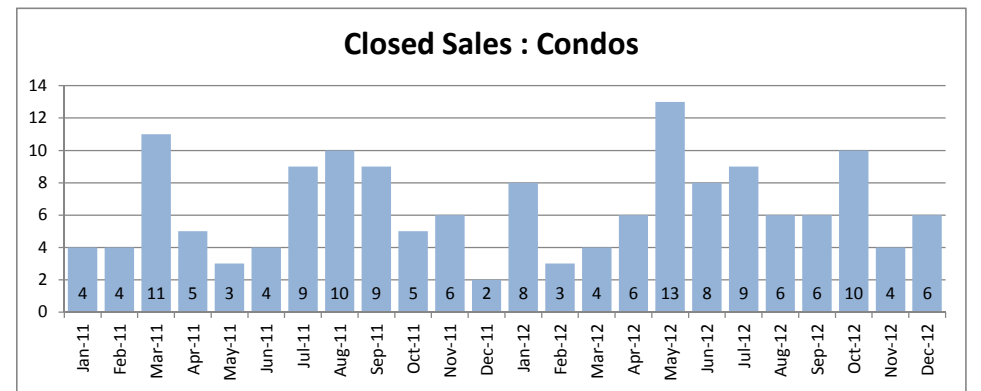
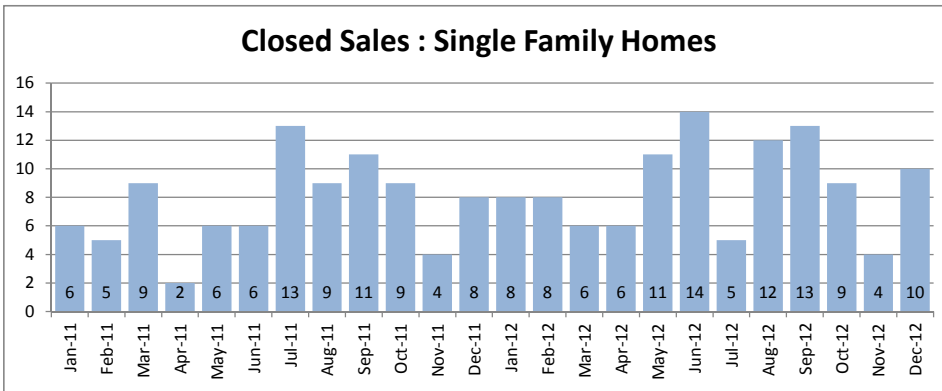


<b>Makakilo</b>
1-9-2 to 1-9-3

December 2012

Single Family Homes	December			Year to Date		
	2012	2011	Change	2012	2011	Change
New Listings	9	15	-40%	125	173	-28%
Closed Sales	10	8	25%	109	93	17%
Median Sales Price	\$597,500	\$507,500	18%	\$575,000	\$510,000	13%
Percent of Original List Price Received	99.7%	95.7%	4%	97.9%	96.0%	2%
Median Days on Market Until Sale	87	56	55%	54	34	59%
Inventory of Homes for Sale	37	48	-23%	--	--	--

Condos	December			Year to Date		
	2012	2011	Change	2012	2011	Change
New Listings	6	5	20%	84	99	-15%
Closed Sales	6	2	200%	86	72	19%
Median Sales Price	\$231,500	\$307,600	-25%	\$255,000	\$250,000	2%
Percent of Original List Price Received	92.6%	92.3%	0%	98.9%	95.5%	4%
Median Days on Market Until Sale	35	138	-75%	18	41	-56%
Inventory of Homes for Sale	13	13	0%	--	--	--



SOURCE: Honolulu Board of REALTORS®, compiled from MLS data.

# Local Market Update

December 2012



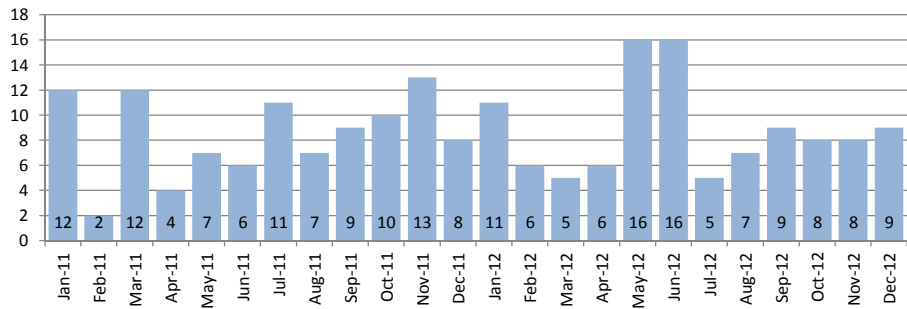
**Makiki - Moiliili**  
1-2-4 to 1-2-9 (except 1-2-6)

December 2012

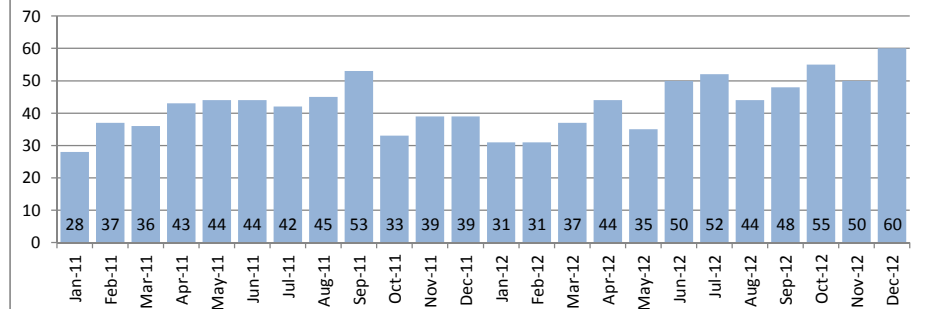
Single Family Homes	December			Year to Date		
	2012	2011	Change	2012	2011	Change
New Listings	12	4	200%	124	169	-27%
Closed Sales	9	8	13%	106	101	5%
Median Sales Price	\$946,000	\$790,000	20%	\$893,350	\$850,000	5%
Percent of Original List Price Received	99.6%	94.8%	5%	94.6%	92.5%	2%
Median Days on Market Until Sale	8	48	-83%	21	44	-52%
Inventory of Homes for Sale	40	41	-2%	--	--	--

Condos	December			Year to Date		
	2012	2011	Change	2012	2011	Change
New Listings	27	37	-27%	500	847	-41%
Closed Sales	60	39	54%	551	490	12%
Median Sales Price	\$330,000	\$282,500	17%	\$315,000	\$300,000	5%
Percent of Original List Price Received	97.3%	90.6%	7%	95.7%	94.1%	2%
Median Days on Market Until Sale	26	37	-30%	31	38	-18%
Inventory of Homes for Sale	168	186	-10%	--	--	--

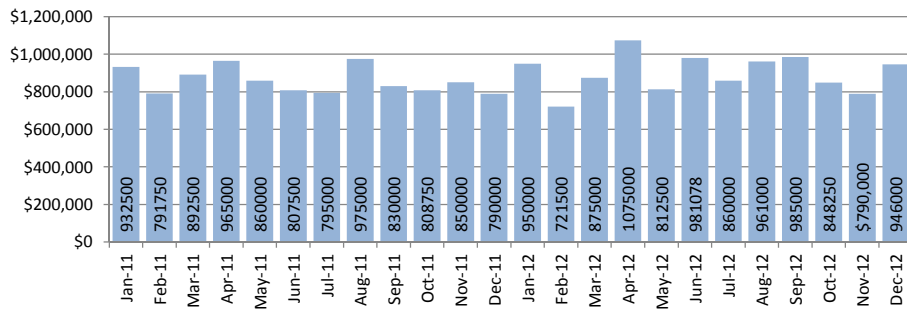
**Closed Sales : Single Family Homes**



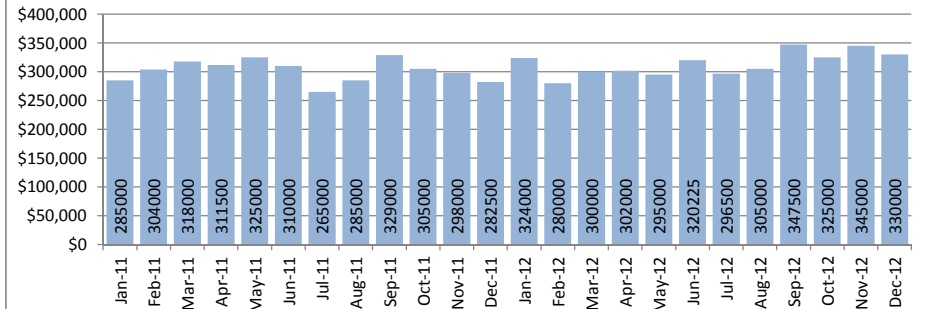
**Closed Sales : Condos**



**Median Sales Price : Single Family Homes**



**Median Sales Price : Condos**



SOURCE: Honolulu Board of REALTORS®, compiled from MLS data.

# Local Market Update

## December 2012

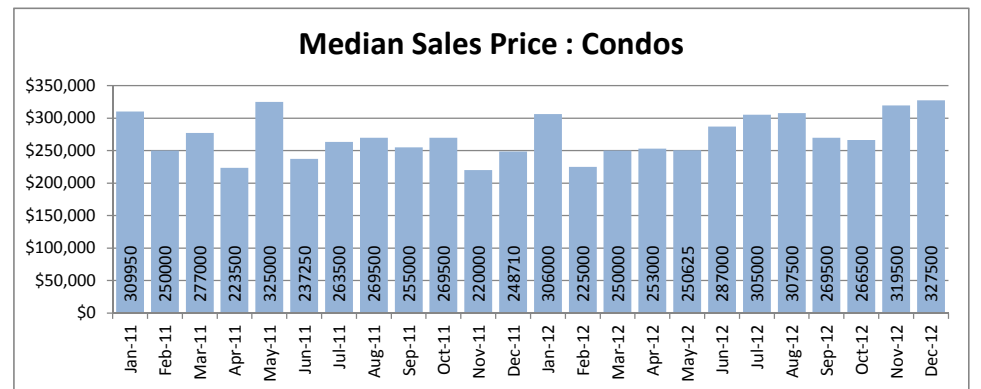
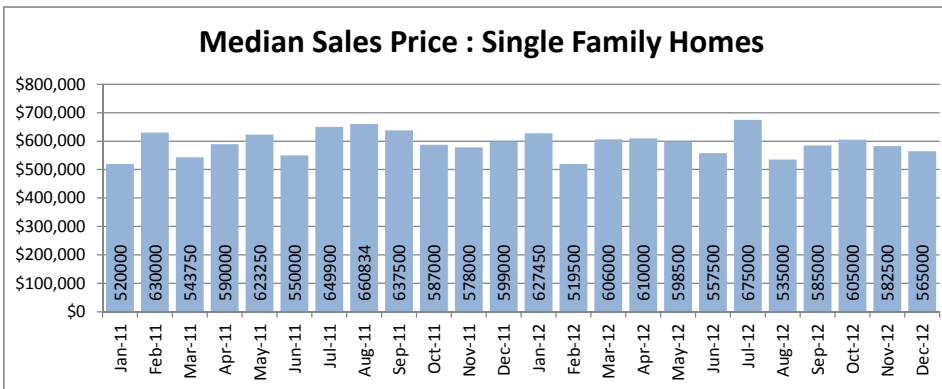
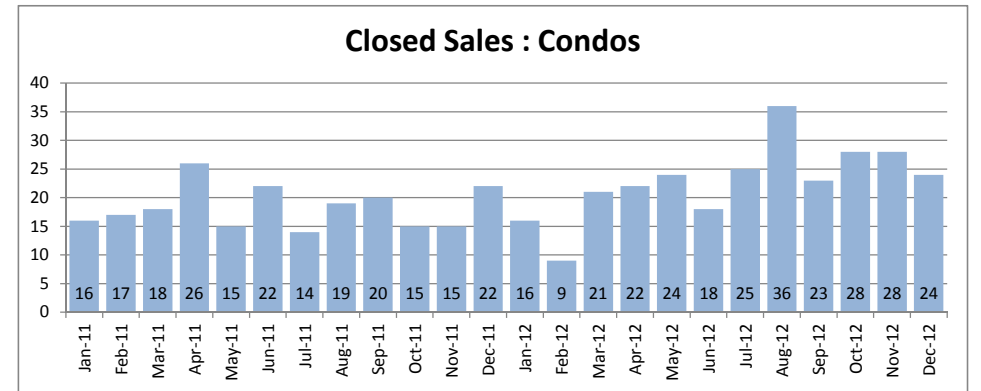
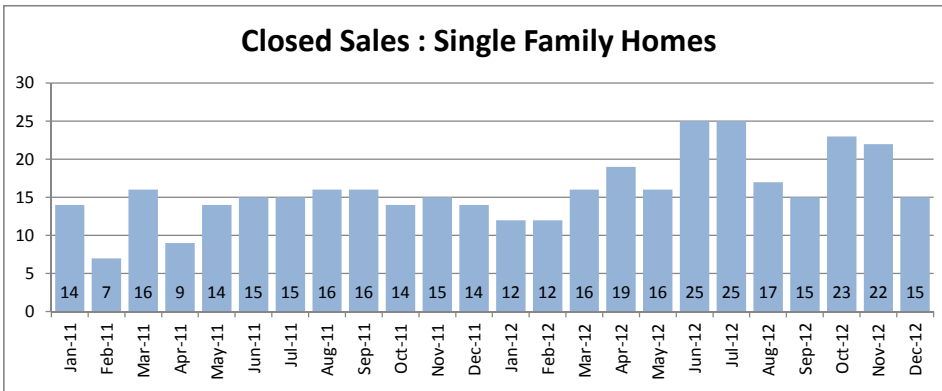


<b>Mililani</b>
Selected 1-9-4 to 1-9-5

December 2012

Single Family Homes	December			Year to Date		
	2012	2011	Change	2012	2011	Change
New Listings	7	12	-42%	232	253	-8%
Closed Sales	15	14	7%	241	167	44%
Median Sales Price	\$565,000	\$599,000	-6%	\$590,000	\$590,000	0%
Percent of Original List Price Received	100.0%	97.9%	2%	98.3%	96.6%	2%
Median Days on Market Until Sale	24	25	-4%	31	37	-16%
Inventory of Homes for Sale	36	45	-20%	--	--	--

Condos	December			Year to Date		
	2012	2011	Change	2012	2011	Change
New Listings	15	16	-6%	255	272	-6%
Closed Sales	24	22	9%	297	224	33%
Median Sales Price	\$327,500	\$248,710	32%	\$289,000	\$254,500	14%
Percent of Original List Price Received	97.8%	94.5%	3%	98.0%	95.2%	3%
Median Days on Market Until Sale	13	44	-70%	25	38	-34%
Inventory of Homes for Sale	54	43	26%	--	--	--



**SOURCE: Honolulu Board of REALTORS® , compiled from MLS data.**

# Local Market Update

December 2012

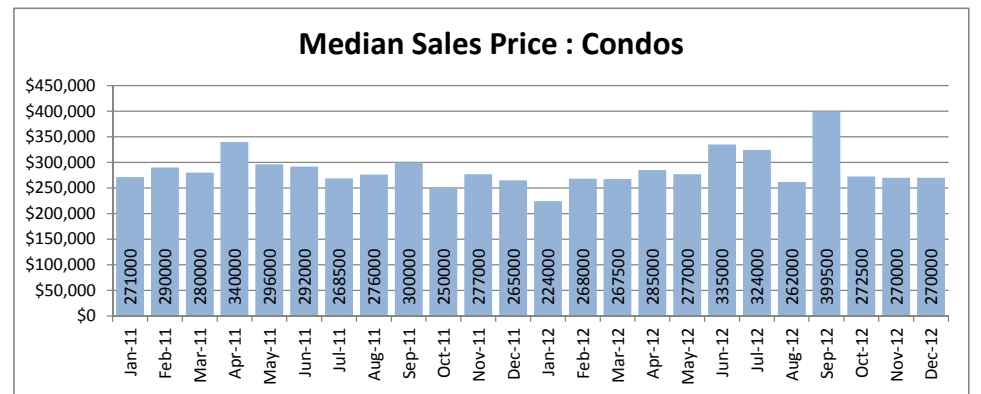
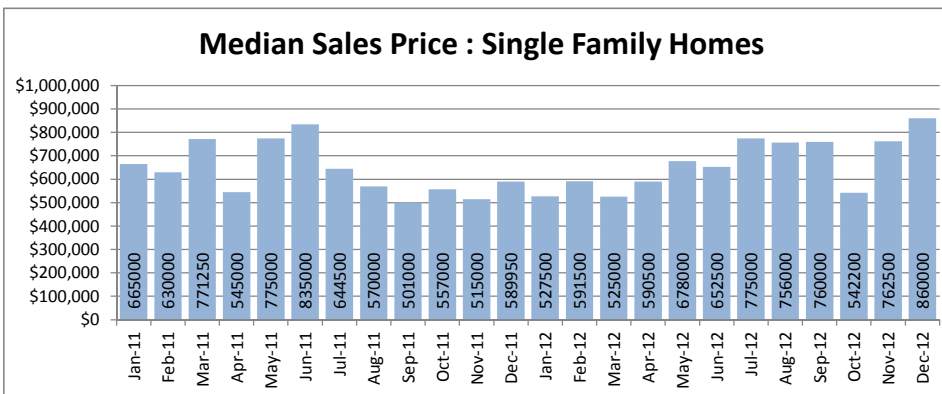
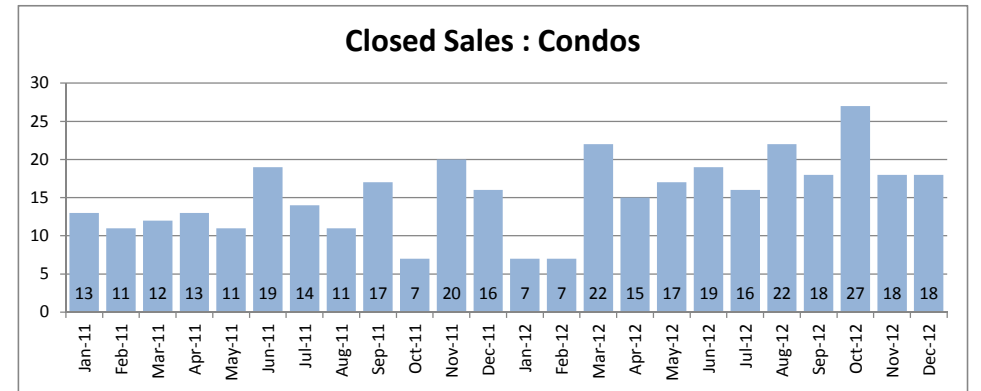
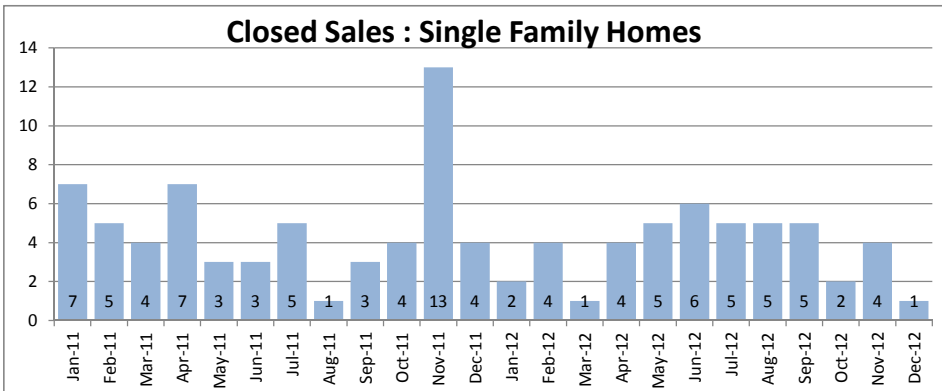


<b>Monalua - Salt Lake</b>
<b>1-1-1</b>

December 2012

Single Family Homes	December			Year to Date		
	2012	2011	Change	2012	2011	Change
New Listings	2	5	-60%	48	78	-38%
Closed Sales	1	4	-75%	45	59	-24%
Median Sales Price	\$860,000	\$589,950	46%	\$700,500	\$587,500	19%
Percent of Original List Price Received	96.7%	95.5%	1%	96.6%	94.0%	3%
Median Days on Market Until Sale	95	50	90%	22	35	-37%
Inventory of Homes for Sale	11	12	-8%	--	--	--

Condos	December			Year to Date		
	2012	2011	Change	2012	2011	Change
New Listings	10	15	-33%	180	254	-29%
Closed Sales	18	16	13%	206	168	23%
Median Sales Price	\$270,000	\$265,000	2%	\$275,000	\$280,000	-2%
Percent of Original List Price Received	98.7%	93.9%	5%	95.5%	95.4%	0%
Median Days on Market Until Sale	14	67	-79%	18	40	-55%
Inventory of Homes for Sale	41	47	-13%	--	--	--



SOURCE: Honolulu Board of REALTORS®, compiled from MLS data.



# Local Market Update

December 2012

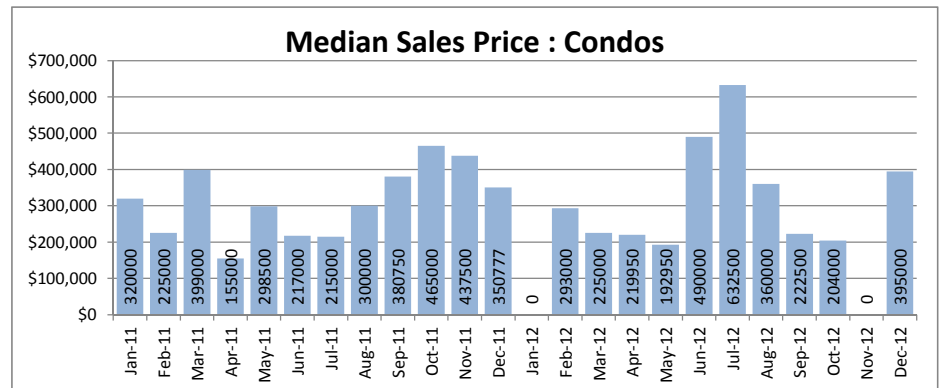
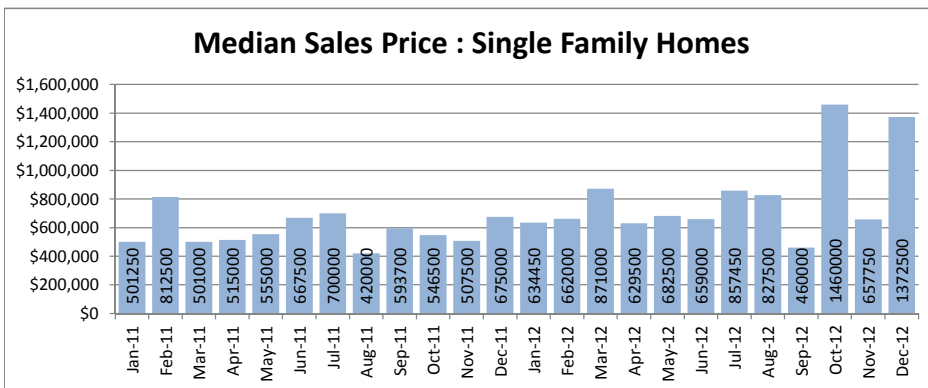
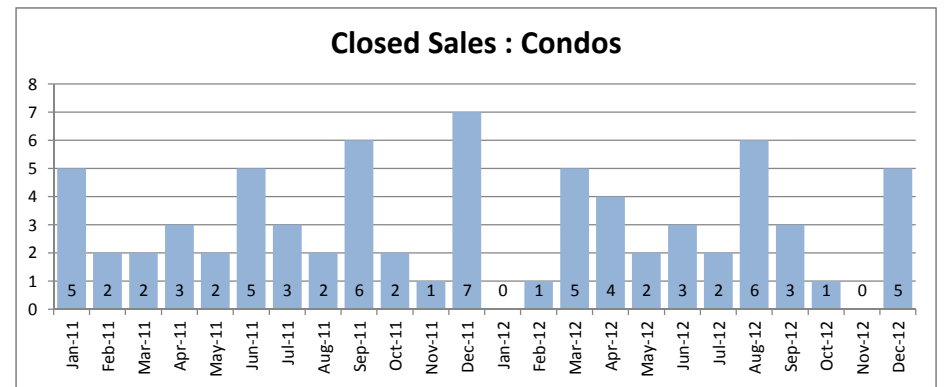
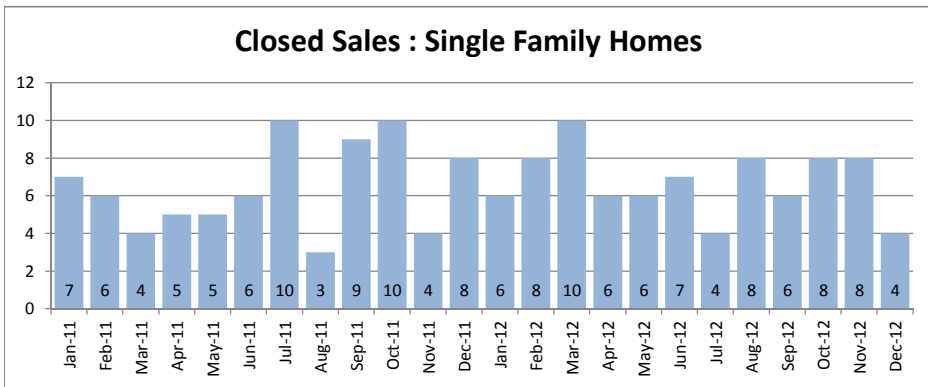


**North Shore**  
1-5-6 to 1-6-9

December 2012

Single Family Homes	December			Year to Date		
	2012	2011	Change	2012	2011	Change
New Listings	11	14	-21%	114	194	-41%
Closed Sales	4	8	-50%	84	82	2%
Median Sales Price	\$1,372,500	\$675,000	103%	\$669,500	\$581,625	15%
Percent of Original List Price Received	85.4%	88.5%	-4%	92.3%	91.7%	1%
Median Days on Market Until Sale	73	41	78%	50	61	-18%
Inventory of Homes for Sale	58	76	-24%	--	--	--

Condos	December			Year to Date		
	2012	2011	Change	2012	2011	Change
New Listings	2	6	-67%	41	71	-42%
Closed Sales	5	7	-29%	32	40	-20%
Median Sales Price	\$395,000	\$350,777	13%	\$300,000	\$285,000	5%
Percent of Original List Price Received	100.5%	94.1%	7%	94.0%	90.3%	4%
Median Days on Market Until Sale	9	59	-85%	59	50	18%
Inventory of Homes for Sale	25	28	-11%	--	--	--



SOURCE: Honolulu Board of REALTORS®, compiled from MLS data.

# Local Market Update

December 2012



**Pearl City - Aiea**

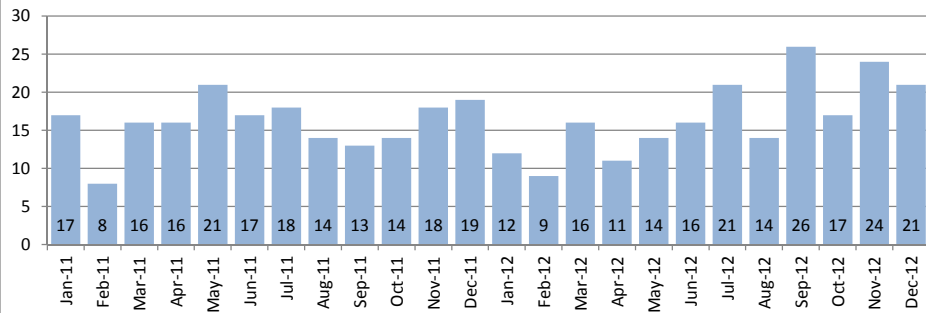
1-9-6 to 1-9-9

December 2012

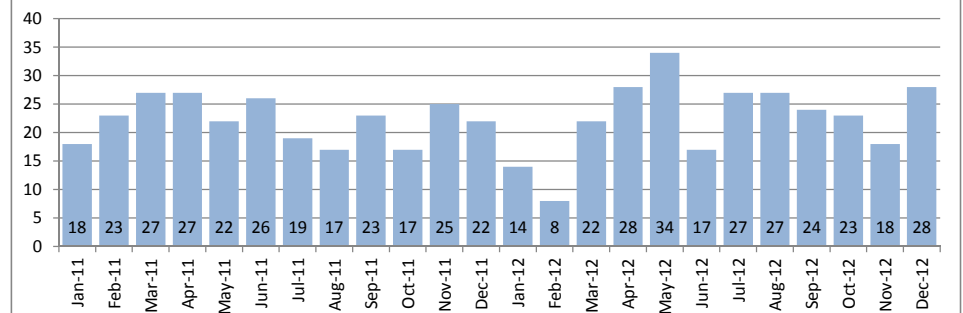
Single Family Homes	December			Year to Date		
	2012	2011	Change	2012	2011	Change
New Listings	15	16	-6%	222	279	-20%
Closed Sales	21	19	11%	206	191	8%
Median Sales Price	\$540,000	\$532,500	1%	\$583,750	\$570,000	2%
Percent of Original List Price Received	96.6%	93.5%	3%	95.7%	95.7%	0%
Median Days on Market Until Sale	29	24	21%	27	33	-18%
Inventory of Homes for Sale	63	66	-5%	--	--	--

Condos	December			Year to Date		
	2012	2011	Change	2012	2011	Change
New Listings	16	24	-33%	239	395	-39%
Closed Sales	28	22	27%	284	273	4%
Median Sales Price	\$326,000	\$291,250	12%	\$275,000	\$273,000	1%
Percent of Original List Price Received	102.8%	92.0%	12%	97.5%	94.7%	3%
Median Days on Market Until Sale	26	69	-62%	36	44	-18%
Inventory of Homes for Sale	70	90	-22%	--	--	--

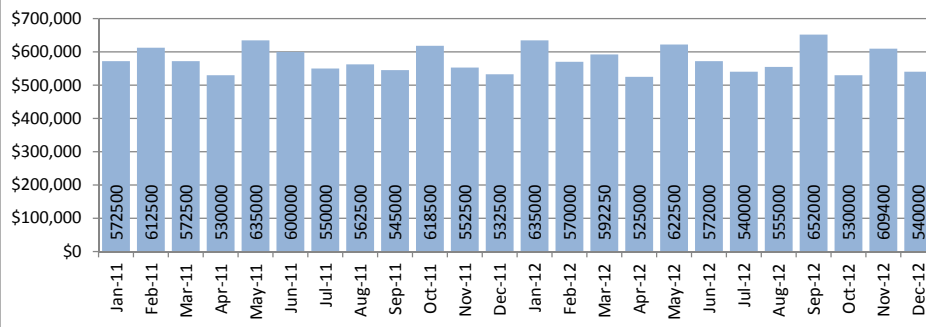
**Closed Sales : Single Family Homes**



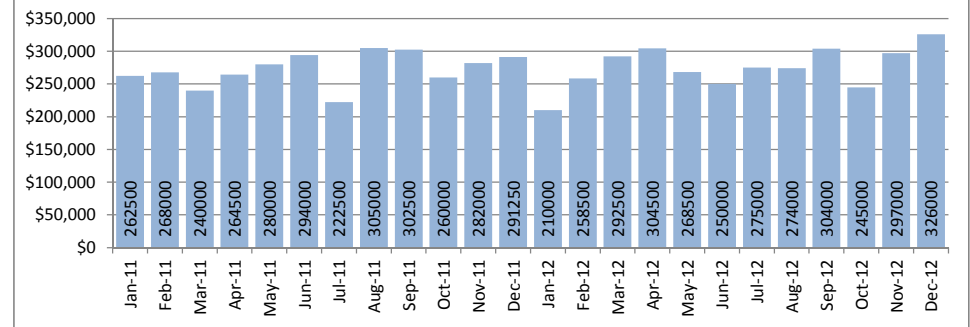
**Closed Sales : Condos**



**Median Sales Price : Single Family Homes**



**Median Sales Price : Condos**



**SOURCE: Honolulu Board of REALTORS® , compiled from MLS data.**

# Local Market Update

December 2012

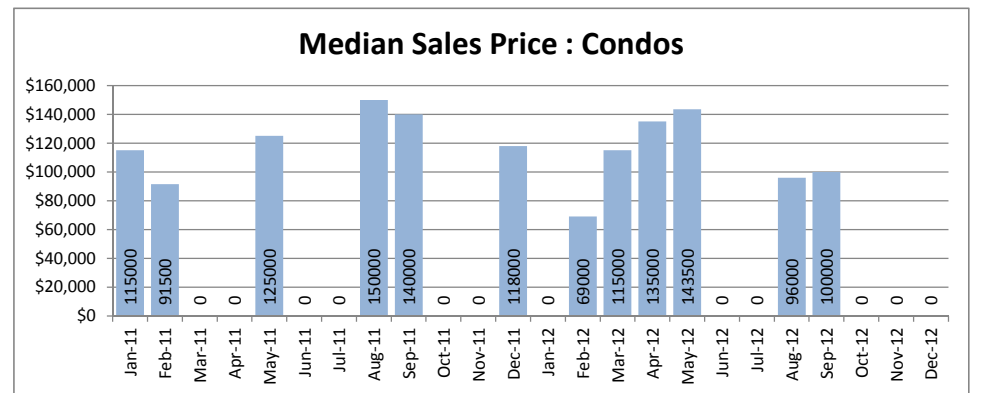
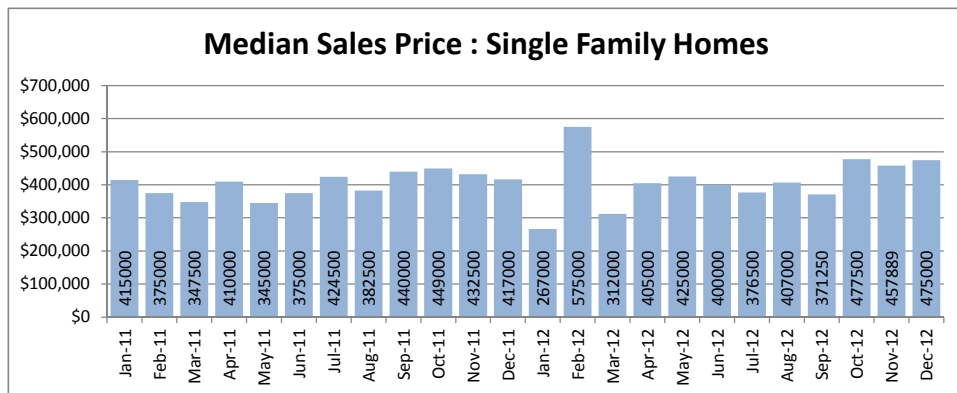
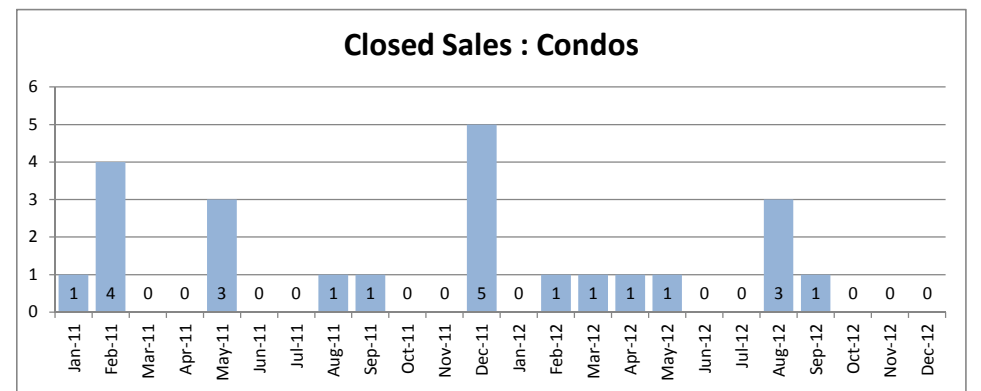
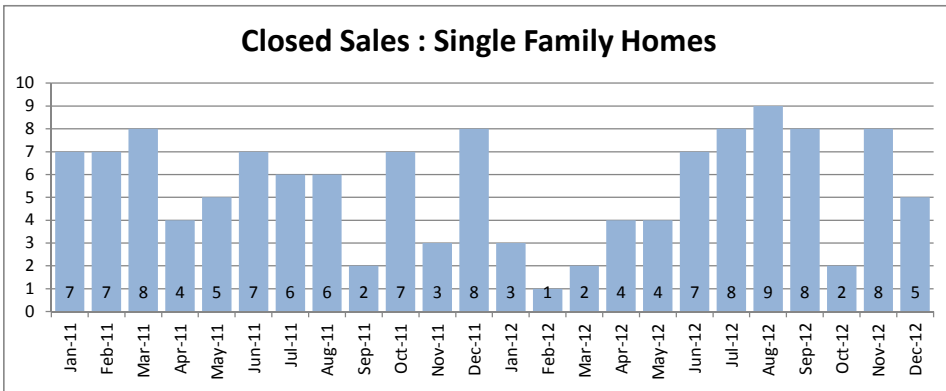


<b>Wahiawa</b>
1-7-1 to 1-7-7

December 2012

Single Family Homes	December			Year to Date		
	2012	2011	Change	2012	2011	Change
New Listings	2	5	-60%	76	93	-18%
Closed Sales	5	8	-38%	63	71	-11%
Median Sales Price	\$475,000	\$417,000	14%	\$400,000	\$395,000	1%
Percent of Original List Price Received	111.8%	99.7%	12%	100.3%	93.3%	8%
Median Days on Market Until Sale	96	16	500%	21	54	-61%
Inventory of Homes for Sale	16	26	-38%	--	--	--

Condos	December			Year to Date		
	2012	2011	Change	2012	2011	Change
New Listings	1	1	0%	18	23	-22%
Closed Sales	0	5	-	10	15	-33%
Median Sales Price	\$0	\$118,000	-	\$108,000	\$125,000	-14%
Percent of Original List Price Received	0.0%	87.8%	-	88.2%	88.1%	0%
Median Days on Market Until Sale	0	54	-	70	74	-5%
Inventory of Homes for Sale	9	6	50%	--	--	--



SOURCE: Honolulu Board of REALTORS®, compiled from MLS data.

# Local Market Update

December 2012

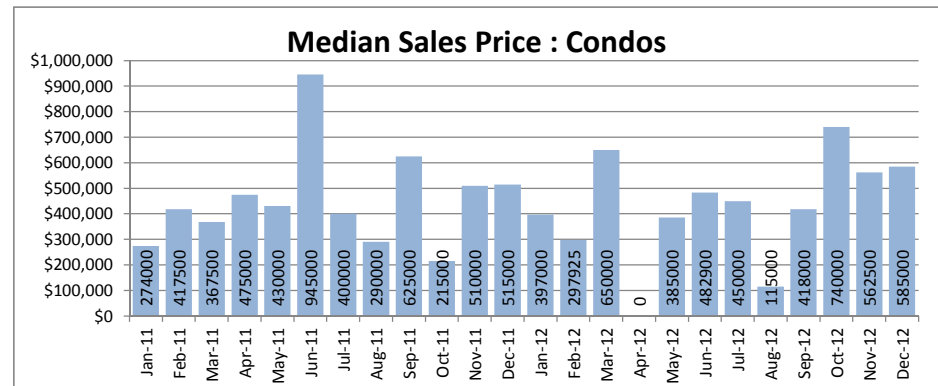
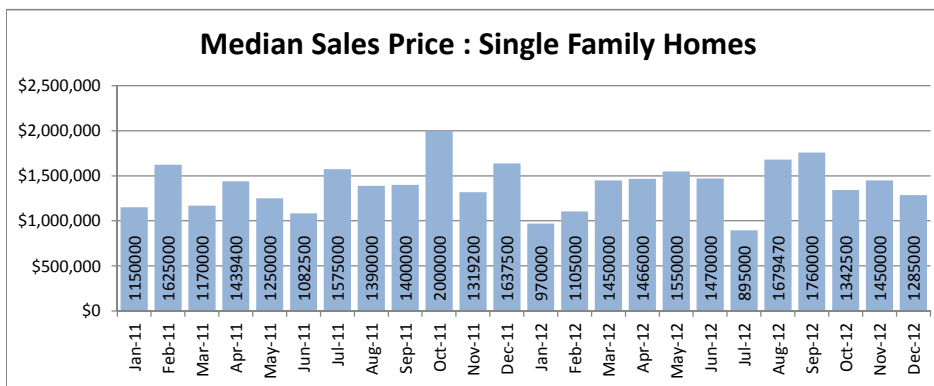
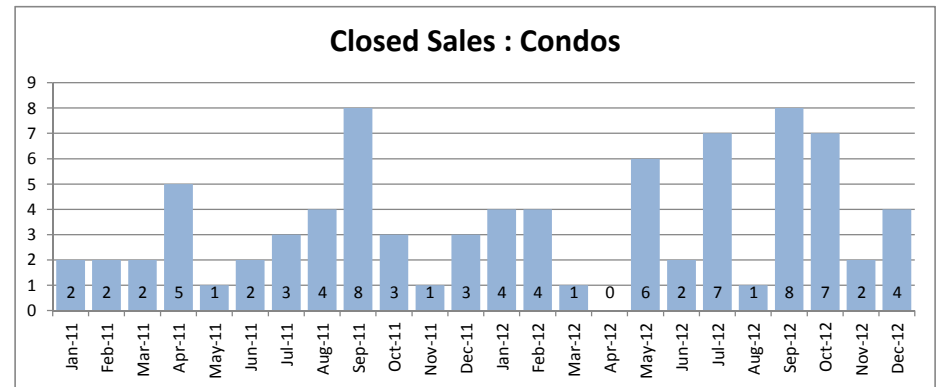
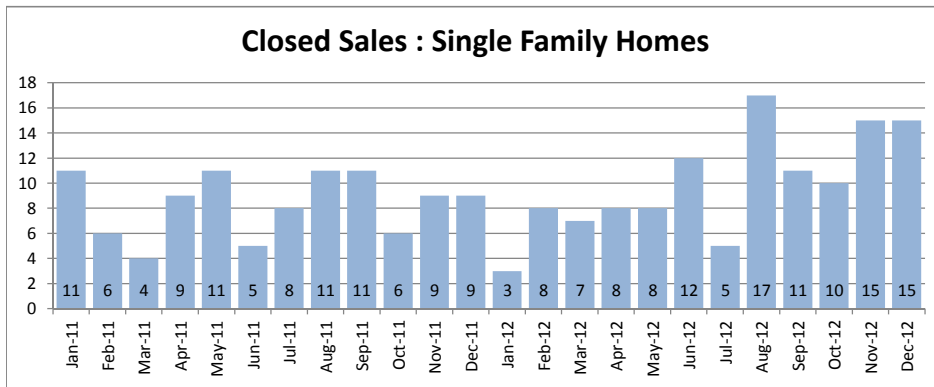


<b>Waialae - Kahala</b>
<b>1-3-5</b>

December 2012

Single Family Homes	December			Year to Date		
	2012	2011	Change	2012	2011	Change
New Listings	9	16	-44%	126	166	-24%
Closed Sales	15	9	67%	121	103	17%
Median Sales Price	\$1,285,000	\$1,637,500	-22%	\$1,450,000	\$1,335,000	9%
Percent of Original List Price Received	88.6%	92.6%	-4%	93.2%	92.1%	1%
Median Days on Market Until Sale	39	68	-43%	39	46	-15%
Inventory of Homes for Sale	44	61	-28%	--	--	--

Condos	December			Year to Date		
	2012	2011	Change	2012	2011	Change
New Listings	2	3	-33%	50	63	-21%
Closed Sales	4	3	33%	49	38	29%
Median Sales Price	\$585,000	\$515,000	14%	\$450,000	\$450,000	0%
Percent of Original List Price Received	94.7%	99.7%	-5%	97.9%	94.6%	3%
Median Days on Market Until Sale	37	10	270%	25	22	14%
Inventory of Homes for Sale	17	14	21%	--	--	--



SOURCE: Honolulu Board of REALTORS® , compiled from MLS data.

# Local Market Update

## December 2012

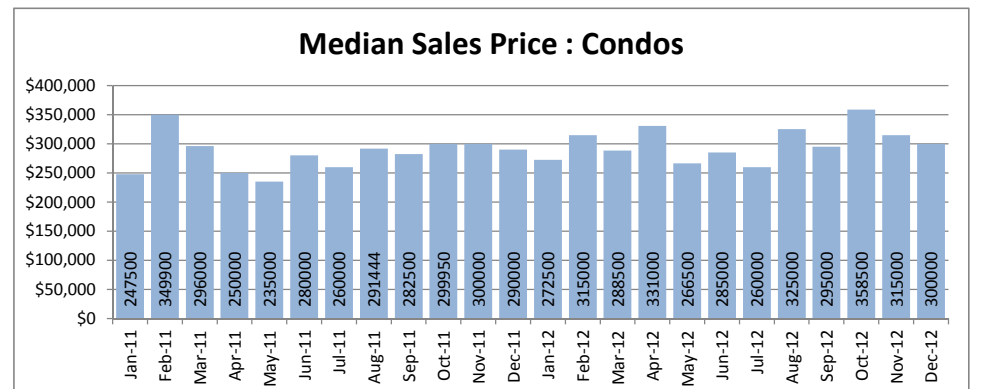
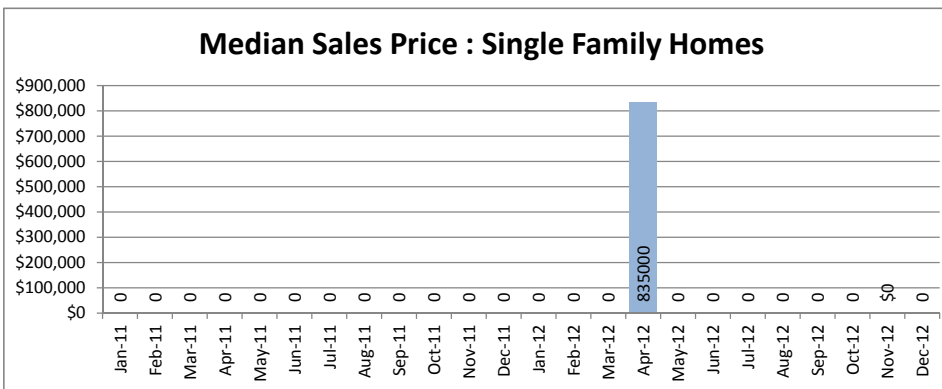
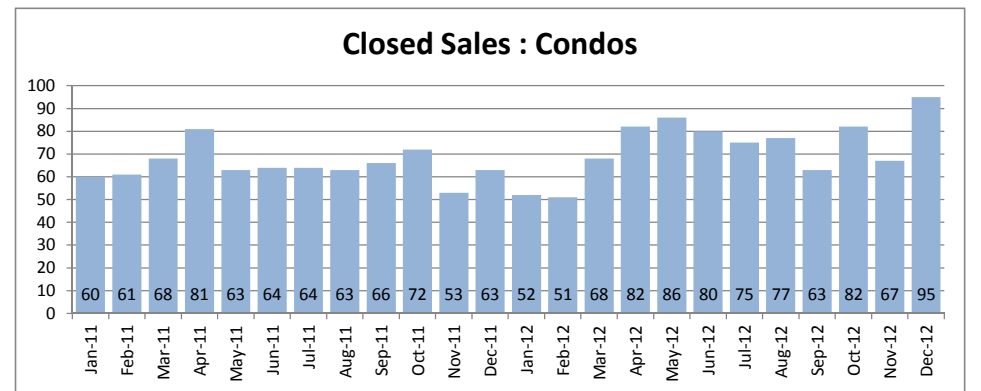
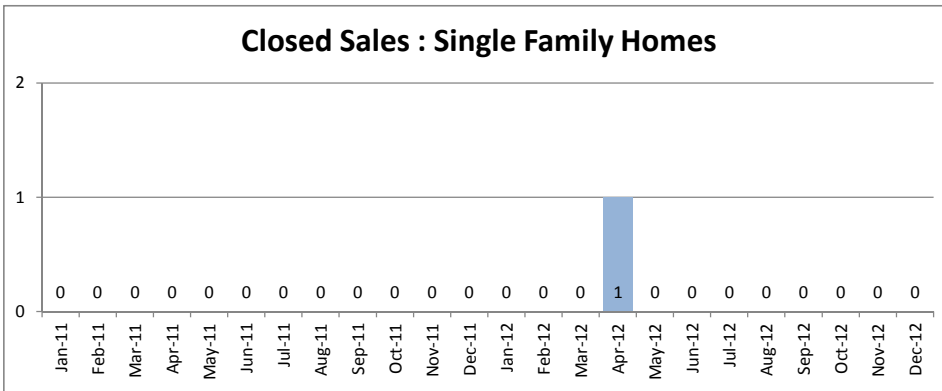


<b>Waikiki</b>
1-2-6

December 2012

Single Family Homes	December			Year to Date		
	2012	2011	Change	2012	2011	Change
New Listings	0	0	--	1	2	-50%
Closed Sales	0	0	--	1	0	--
Median Sales Price	\$0	\$0	--	\$835,000	\$0	--
Percent of Original List Price Received	0.0%	0.0%	--	92.9%	0.0%	--
Median Days on Market Until Sale	0	0	--	42	0	--
Inventory of Homes for Sale	0	1	--	--	--	--

Condos	December			Year to Date		
	2012	2011	Change	2012	2011	Change
New Listings	81	107	-24%	967	1509	-36%
Closed Sales	95	63	51%	924	810	14%
Median Sales Price	\$300,000	\$290,000	3%	\$365,000	\$285,000	28%
Percent of Original List Price Received	90.9%	92.0%	-1%	98.0%	93.3%	5%
Median Days on Market Until Sale	49	63	-22%	43	43	0%
Inventory of Homes for Sale	465	503	-8%	--	--	--



**SOURCE: Honolulu Board of REALTORS® , compiled from MLS data.**

# Local Market Update

December 2012

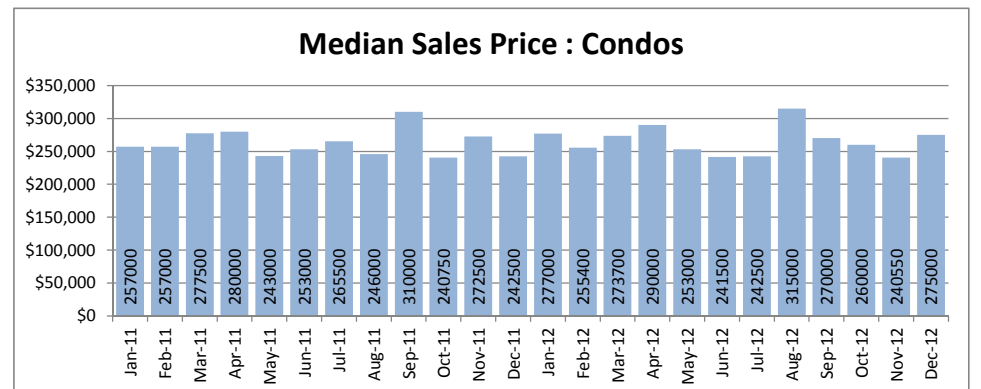
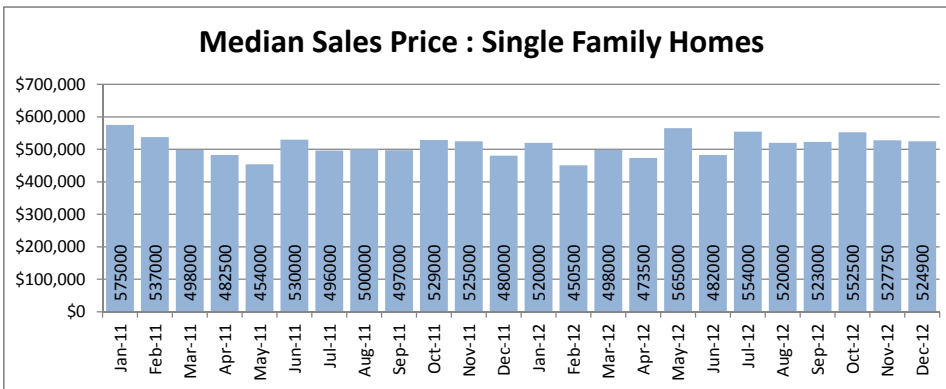
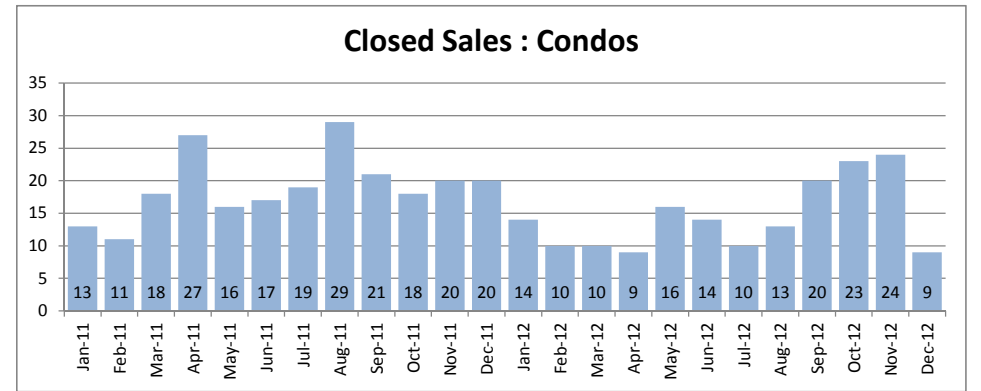
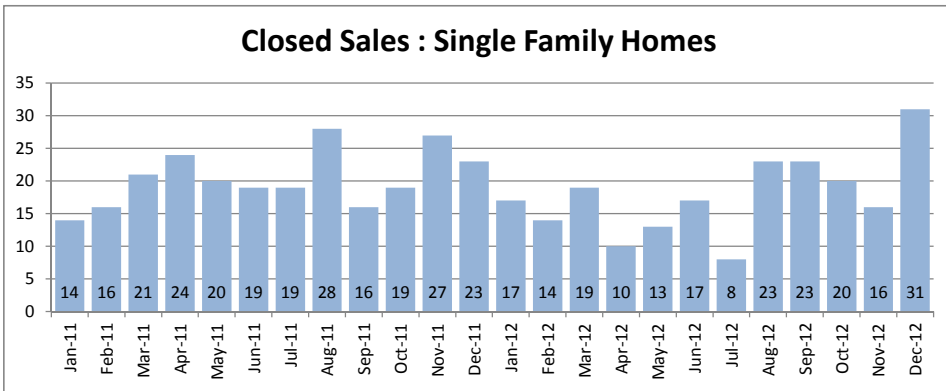


<b>Waipahu</b>
<b>1-9-4</b>

December 2012

Single Family Homes	December			Year to Date		
	2012	2011	Change	2012	2011	Change
New Listings	9	30	-70%	204	378	-46%
Closed Sales	31	23	35%	201	251	-20%
Median Sales Price	\$524,900	\$480,000	9%	\$500,000	\$507,500	-1%
Percent of Original List Price Received	90.7%	95.6%	-5%	96.2%	95.9%	0%
Median Days on Market Until Sale	22	65	-66%	26	44	-41%
Inventory of Homes for Sale	63	78	-19%	--	--	--

Condos	December			Year to Date		
	2012	2011	Change	2012	2011	Change
New Listings	11	22	-50%	179	333	-46%
Closed Sales	9	20	-55%	181	235	-23%
Median Sales Price	\$275,000	\$242,500	13%	\$250,000	\$257,500	-3%
Percent of Original List Price Received	96.5%	97.0%	-1%	95.4%	95.6%	0%
Median Days on Market Until Sale	11	25	-56%	25	38	-34%
Inventory of Homes for Sale	43	69	-38%	--	--	--



SOURCE: Honolulu Board of REALTORS®, compiled from MLS data.

# Local Market Update

December 2012

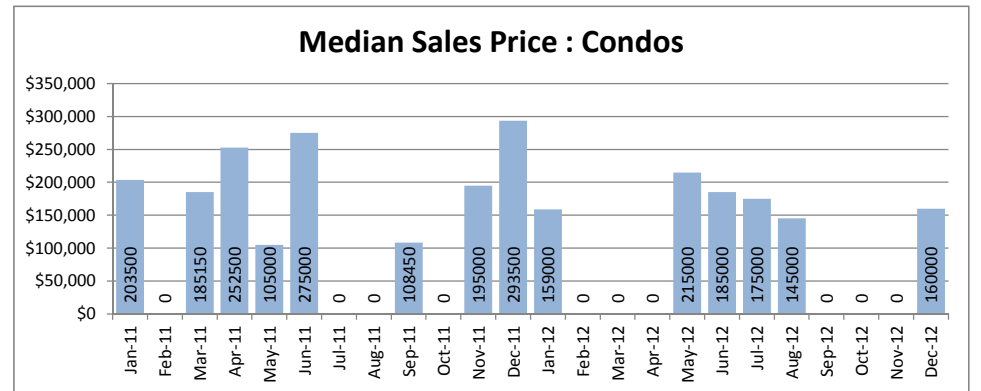
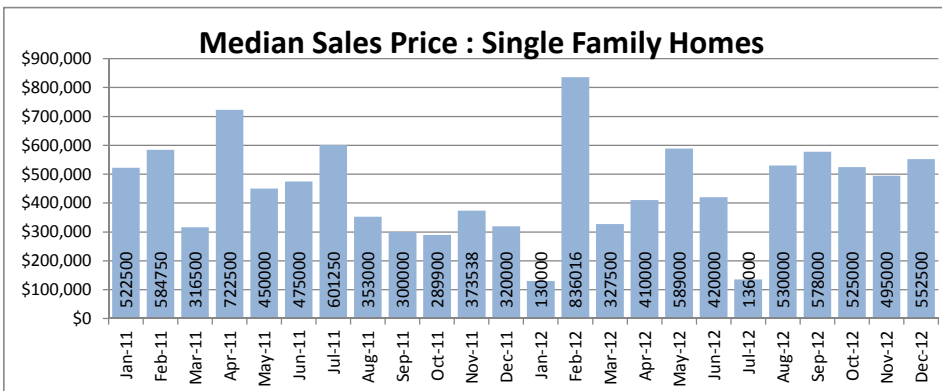
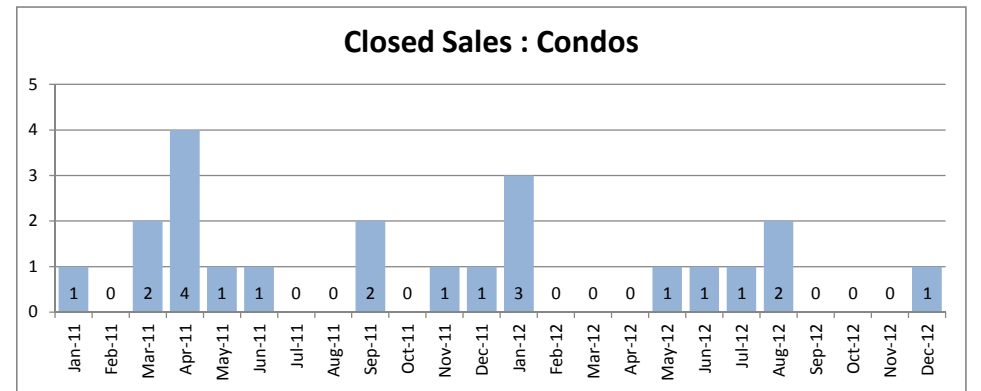
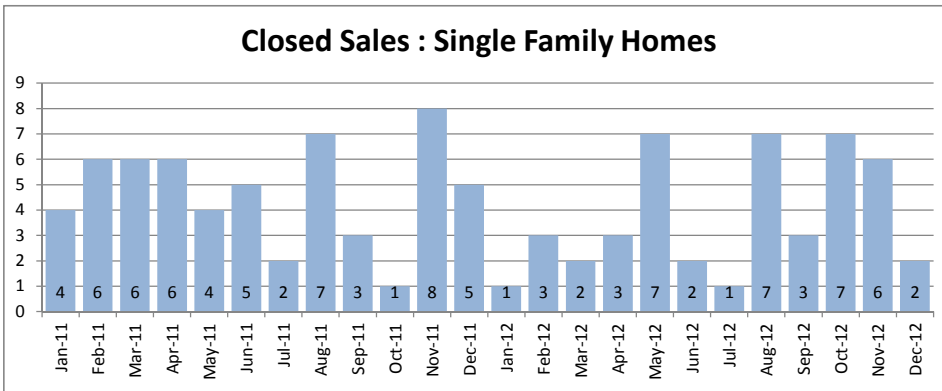


**Windward Coast**  
1-4-8 to 1-5-5

December 2012

Single Family Homes	December			Year to Date		
	2012	2011	Change	2012	2011	Change
New Listings	4	4	0%	85	131	-35%
Closed Sales	2	5	-60%	47	57	-18%
Median Sales Price	\$552,500	\$320,000	73%	\$500,000	\$466,500	7%
Percent of Original List Price Received	100.1%	88.6%	13%	91.1%	90.7%	0%
Median Days on Market Until Sale	44	38	16%	53	45	18%
Inventory of Homes for Sale	41	44	-7%	--	--	--

Condos	December			Year to Date		
	2012	2011	Change	2012	2011	Change
New Listings	0	3	-100%	16	30	-47%
Closed Sales	1	1	--	10	13	-23%
Median Sales Price	\$160,000	\$293,500	--	\$180,000	\$203,500	-12%
Percent of Original List Price Received	86.5%	83.9%	--	97.3%	86.3%	13%
Median Days on Market Until Sale	64	118	--	57	83	-31%
Inventory of Homes for Sale	8	16	-50%	--	--	--



SOURCE: Honolulu Board of REALTORS®, compiled from MLS data.

Single Family Solds - December 2012 vs 2011 (Based on region and neighborhood groupings as listed in MLS) - Page 1 of 4

Central Region	2011 Median	2012 Median	+/-	+/-	2011 Sold	2012 Sold	+/-	+/-
MILILANI AREA	\$ 562,000	\$ 565,000	0.5%	\$3,000	11	11	0.0%	0
MILILANI MAUKA	\$ 650,000	\$ 742,500	14.2%	\$92,500	10	2	-80.0%	-8
WAHIAWA AREA	\$ 334,500	\$ 475,000	42.0%	\$140,500	3	1	-66.7%	-2
WAHIAWA HEIGHTS	\$ 406,000	\$ 479,000	18.0%	\$73,000	3	3	0.0%	0
WAHIAWA PARK	\$ 436,000	-	-	-	1	-	-	-
WAIPIO ACRES/WAIKALANI WOODL	\$ 335,000	\$ 380,200	13.5%	\$45,200	1	2	100.0%	1
WHITMORE VILLAGE	\$ 438,000	\$ 348,000	-20.5%	-\$90,000	1	1	0.0%	0
<b>Central Region</b>	<b>\$ 566,000</b>	<b>\$ 522,500</b>	<b>-7.7%</b>	<b>-\$43,500</b>	<b>30</b>	<b>20</b>	<b>-33.3%</b>	<b>-10</b>

Diamond Hd Region	2011 Median	2012 Median	+/-	+/-	2011 Sold	2012 Sold	+/-	+/-
AINA HAINA AREA	\$ 750,000	\$ 880,000	17.3%	\$130,000	4	3	-25.0%	-1
DIAMOND HEAD	\$ 1,723,872	\$ 2,100,000	21.8%	\$376,128	2	3	50.0%	1
HAWAII LOA RIDGE	\$ 1,625,000	\$ 2,100,000	29.2%	\$475,000	1	3	200.0%	2
KAHALA AREA	\$ 1,825,000	\$ 1,740,000	-4.7%	-\$85,000	5	6	20.0%	1
KAIMUKI	\$ 665,000	\$ 814,000	22.4%	\$149,000	2	8	300.0%	6
KALANI IKI	\$ 875,000	\$ 1,050,000	20.0%	\$175,000	1	1	0.0%	0
KAPAHULU	\$ 870,000	-	-	-	4	-	-	-
KULIOUOU	\$ 744,000	\$ 800,000	7.5%	\$56,000	2	3	50.0%	1
MAUNALANI HEIGHTS	-	\$ 1,190,000	-	-	-	1	-	-
NIU VALLEY	\$ 715,000	\$ 857,000	19.9%	\$142,000	1	1	0.0%	0
PALOLO	\$ 663,000	\$ 610,000	-8.0%	-\$53,000	2	5	150.0%	3
PUUPANINI	-	\$ 2,625,000	-	-	-	1	-	-
ST. LOUIS	\$ 750,000	\$ 1,100,000	46.7%	\$350,000	4	2	-50.0%	-2
WAIALAE IKI	\$ 1,035,300	\$ 1,242,500	20.0%	\$207,200	3	6	100.0%	3
WAIALAE NUI RDGE	-	\$ 1,268,000	-	-	-	1	-	-
WAIALAE NUI VLY	-	\$ 880,000	-	-	-	1	-	-
WAILUPE AREA	-	\$ 4,950,000	-	-	-	2	-	-
WILHELMINA	\$ 938,000	\$ 880,000	-6.2%	-\$58,000	7	3	-57.1%	-4
<b>Diamond Hd Region</b>	<b>\$ 812,500</b>	<b>\$ 1,117,500</b>	<b>37.5%</b>	<b>\$305,000</b>	<b>38</b>	<b>50</b>	<b>31.6%</b>	<b>12</b>

Hawaii Kai Region	2011 Median	2012 Median	+/-	+/-	2011 Sold	2012 Sold	+/-	+/-
ANCHORAGE	-	\$ 1,050,000	-	-	-	1	-	-
HAAHIONE-UPPER	\$ 720,000	\$ 1,074,500	49.2%	\$354,500	1	2	100.0%	1
HAAHIONE-LOWER	-	\$ 870,000	-	-	-	1	-	-
KALAMA VALLEY	\$ 735,000	\$ 839,000	14.1%	\$104,000	1	3	200.0%	2
KAMEHAME RIDGE	\$ 1,000,300	\$ 1,200,000	20.0%	\$199,700	1	1	0.0%	0
KAMILO IKI	\$ 648,000	-	-	-	1	-	-	-
KOKO HEAD TERRAC	\$ 620,000	-	-	-	1	-	-	-
KOKO KAI	\$ 1,485,000	\$ 1,680,000	13.1%	\$195,000	3	3	0.0%	0
KOKO VILLAS	-	\$ 1,330,000	-	-	-	1	-	-
MARINERS COVE	\$ 785,000	\$ 910,000	15.9%	\$125,000	1	1	0.0%	0
MARINERS RIDGE	-	\$ 816,500	-	-	-	2	-	-
MARINERS VALLEY	\$ 595,000	\$ 875,000	47.1%	\$280,000	1	1	0.0%	0
NAPALI HAWEO	-	\$ 2,175,000	-	-	-	1	-	-
PORTLOCK	\$ 3,150,000	-	-	-	1	-	-	-
TRIANGLE	\$ 1,059,000	\$ 1,400,000	32.2%	\$341,000	2	2	0.0%	0
QUEENS GATE	\$ 930,000	-	-	-	1	-	-	-
SPINNAKER ISLE	\$ 1,017,500	-	-	-	2	-	-	-
WEST MARINA	\$ 1,150,000	\$ 565,000	-50.9%	-\$585,000	1	1	0.0%	0
<b>Hawaii Kai Region</b>	<b>\$ 980,000</b>	<b>\$ 1,007,500</b>	<b>2.8%</b>	<b>\$27,500</b>	<b>17</b>	<b>20</b>	<b>17.6%</b>	<b>3</b>



Single Family Solds - December 2012 vs 2011 (Based on region and neighborhood groupings as listed in MLS) - Page 2 of 4

Leeward Region	2011 Median	2012 Median	+/-	+/-	2011 Sold	2012 Sold	+/-	+/-
LUALUALEI	\$ 345,750	-	-	-	2	-	-	-
MAILI	\$ 362,500	\$ 285,000	-21.4%	-\$77,500	14	8	-42.9%	-6
MAILI SEA-KAIMALINO	\$ 313,000	\$ 273,000	-12.8%	-\$40,000	1	1	0.0%	0
MAILI SEA-MAKALAE 1	\$ 469,055	\$ 435,000	-7.3%	-\$34,055	5	5	0.0%	0
MAILI SEA-NOHOKAI	-	\$ 309,000	-	-	-	1	-	-
MAKAHA	\$ 226,000	\$ 501,356	121.8%	\$275,356	2	3	50.0%	1
NANAKULI	\$ 125,000	-	-	-	1	-	-	-
WAIANA	\$ 259,000	\$ 320,000	23.6%	\$61,000	1	3	200.0%	2
<b>Leeward Region</b>	<b>\$ 362,500</b>	<b>\$ 369,000</b>	<b>1.8%</b>	<b>\$6,500</b>	<b>26</b>	<b>21</b>	<b>-19.2%</b>	<b>-5</b>
Ewa Plain Region	2011 Median	2012 Median	+/-	+/-	2011 Sold	2012 Sold	+/-	+/-
EWA BEACH	\$ 240,000	\$ 463,500	93.1%	\$223,500	1	4	300.0%	3
EWA GEN ALII COURT	\$ 331,000	-	-	-	2	-	-	-
EWA GEN ALII COVE	-	\$ 385,000	-	-	-	1	-	-
EWA GEN HALEAKEA	-	\$ 757,500	-	-	-	1	-	-
EWA GEN LAULANI-TIDES	-	\$ 440,000	-	-	-	2	-	-
EWA GEN LAS BRISAS	\$ 351,000	\$ 356,325	1.5%	\$5,325	1	2	100.0%	1
EWA GEN MONTECITO/TUSCANY	-	\$ 388,250	-	-	-	2	-	-
EWA GEN PRESCOTT	\$ 488,500	\$ 500,000	2.4%	\$11,500	2	1	-50.0%	-1
EWA GEN SUMMERHILL	-	\$ 460,000	-	-	-	2	-	-
EWA GEN SODA CREEK	\$ 450,000	\$ 449,000	-0.2%	-\$1,000	2	1	-50.0%	-1
EWA GEN SONOMA	\$ 505,000	-	-	-	1	-	-	-
EWA GEN SUN TERRA	\$ 420,000	-	-	-	1	-	-	-
EWA GEN SUN TERRA ON THE PARK	\$ 459,000	-	-	-	1	-	-	-
EWA GEN SUN TERRA SOUTH	\$ 420,000	-	-	-	1	-	-	-
EWA GEN TERRAZZA	\$ 420,000	\$ 400,000	-4.8%	-\$20,000	1	1	0.0%	0
EWA GEN TIBURON	-	\$ 405,000	-	-	-	3	-	-
EWA GEN WOODBRIDGE	-	\$ 590,000	-	-	-	1	-	-
EWA VILLAGES	\$ 435,075	\$ 370,000	-15.0%	-\$65,075	2	5	150.0%	3
HOAKALEI-KA MAKANA	\$ 579,678	\$ 657,500	13.4%	\$77,822	2	5	150.0%	3
HUELANI	\$ 467,500	-	-	-	2	-	-	-
KAPOLEI	\$ 415,000	\$ 575,500	38.7%	\$160,500	5	2	-60.0%	-3
KAPOLEI KNOLLS	\$ 539,000	\$ 659,000	22.3%	\$120,000	1	1	0.0%	0
KAPOLEI-KAI	\$ 533,000	\$ 540,000	1.3%	\$7,000	1	1	0.0%	0
KAPOLEI-IWALANI	-	\$ 579,000	-	-	-	1	-	-
KAPOLEI-KEKUILANI	\$ 425,000	\$ 480,000	12.9%	\$55,000	1	3	200.0%	2
KAPOLEI-MALANAI	\$ 650,000	\$ 420,000	-35.4%	-\$230,000	1	1	0.0%	0
LEEWARD ESTATES	\$ 337,500	-	-	-	2	-	-	-
OCEAN POINTE	\$ 475,000	\$ 480,000	1.1%	\$5,000	5	7	40.0%	2
WESTLOCH FAIRWAY	\$ 440,000	\$ 469,500	6.7%	\$29,500	1	2	100.0%	1
WESTLOCH ESTATES	\$ 550,000	-	-	-	1	-	-	-
<b>Ewa Plain Region</b>	<b>\$ 455,000</b>	<b>\$ 470,000</b>	<b>3.3%</b>	<b>\$15,000</b>	<b>37</b>	<b>49</b>	<b>32.4%</b>	<b>12</b>
Makakilo Region	2011 Median	2012 Median	+/-	+/-	2011 Sold	2012 Sold	+/-	+/-
MAKAKILO-HIGHLANDS	\$ 700,000	-	-	-	1	-	-	-
MAKAKILO-HIGHPOINTE	-	\$ 600,000	-	-	-	1	-	-
MAKAKILO-KAHIWELO	\$ 615,000	\$ 653,022	6.2%	\$38,022	1	1	0.0%	0
MAKAKILO-UPPER	\$ 502,500	\$ 582,000	15.8%	\$79,500	2	3	50.0%	1
MAKAKILO-LOWER	\$ 440,000	\$ 542,000	23.2%	\$102,000	3	1	-66.7%	-2
MAKAKILO-WAI KALOI	\$ 632,500	\$ 800,000	26.5%	\$167,500	1	1	0.0%	0
MAKAKILO-ROYAL RIDGE	-	\$ 595,000	-	-	-	1	-	-
MAKAKILO-STARSEDGE	-	\$ 609,000	-	-	-	1	-	-
NANAKAI GARDENS	\$ 340,000	\$ 433,000	27.4%	\$93,000	1	1	0.0%	0
<b>Makakilo Region</b>	<b>\$ 450,000</b>	<b>\$ 597,500</b>	<b>32.8%</b>	<b>\$147,500</b>	<b>9</b>	<b>10</b>	<b>11.1%</b>	<b>1</b>

Single Family Solds - December 2012 vs 2011 (Based on region and neighborhood groupings as listed in MLS) - Page 3 of 4

Kailua Region	2011 Median	2012 Median	+/-	+/-	2011 Sold	2012 Sold	+/-	+/-
BEACHSIDE	\$ 1,550,000	-	-	-	1	-	-	-
COCONUT GROVE	\$ 660,000	\$ 637,000	-3.5%	-\$23,000	1	3	200.0%	2
ENCHANTED LAKE	\$ 1,082,500	\$ 749,900	-30.7%	-\$332,600	4	1	-75.0%	-3
HILLCREST	\$ 1,137,500	-	-	-	2	-	-	-
KAILUA BLUFFS	\$ 850,000	-	-	-	3	-	-	-
KALAHEO ESTATES	-	\$ 1,400,000	-	-	-	1	-	-
KAIMALINO	-	\$ 1,400,000	-	-	-	1	-	-
KALAMA TRACT	\$ 955,000	\$ 1,110,000	16.2%	\$155,000	1	1	0.0%	0
KALAMA/CNUT GROV	\$ 840,000	\$ 1,149,000	36.8%	\$309,000	1	1	0.0%	0
KAWAIOLOA	-	\$ 900,000	-	-	-	1	-	-
KEOLU HILLS	\$ 670,000	\$ 655,000	-2.2%	-\$15,000	3	3	0.0%	0
KOOLAUPOKU	-	\$ 807,500	-	-	-	4	-	-
KUULEI TRACT	-	\$ 2,100,000	-	-	-	1	-	-
KUKANANONO	\$ 835,000	-	-	-	1	-	-	-
LANIKAI	\$ 1,130,000	\$ 5,200,000	360.2%	\$4,070,000	1	3	200.0%	2
OLOMANA	\$ 682,800	\$ 700,500	2.6%	\$17,700	1	1	0.0%	0
POHAKUPU	\$ 740,000	-	-	-	1	-	-	-
WAIMANALO	\$ 571,750	\$ 389,000	-32.0%	-\$182,750	2	3	50.0%	1
<b>Kailua Region</b>	<b>\$ 837,500</b>	<b>\$ 824,950</b>	<b>-1.5%</b>	<b>-\$12,550</b>	<b>22</b>	<b>24</b>	<b>9.1%</b>	<b>2</b>
<b>Pearl City Region</b>	<b>2011 Median</b>	<b>2012 Median</b>	<b>+/-</b>	<b>+/-</b>	<b>2011 Sold</b>	<b>2012 Sold</b>	<b>+/-</b>	<b>+/-</b>
AIEA AREA	\$ 380,000	\$ 509,850	34.2%	\$129,850	1	1	0.0%	0
AIEA HEIGHTS	\$ 600,000	\$ 493,500	-17.8%	-\$106,500	3	3	0.0%	0
FOSTER VILLAGE	\$ 665,000	-	-	-	1	-	-	-
HALAWA	\$ 780,000	\$ 630,000	-19.2%	-\$150,000	1	3	200.0%	2
MOMILANI	-	\$ 562,500	-	-	-	2	-	-
NEWTOWN	\$ 597,500	-	-	-	2	-	-	-
PACIFIC PALISADES	\$ 490,000	\$ 516,000	5.3%	\$26,000	1	4	300.0%	3
PEARL CITY-UPPER	\$ 567,000	\$ 529,000	-6.7%	-\$38,000	6	5	-16.7%	-1
PEARLRIDGE	\$ 665,000	\$ 1,270,000	91.0%	\$605,000	1	1	0.0%	0
WAIU	\$ 530,000	-	-	-	1	-	-	-
WAILUNA	-	\$ 602,500	-	-	-	2	-	-
WAIMALU	\$ 330,000	-	-	-	3	-	-	-
<b>Pearl City Region</b>	<b>\$ 532,500</b>	<b>\$ 540,000</b>	<b>1.4%</b>	<b>\$7,500</b>	<b>20</b>	<b>21</b>	<b>5.0%</b>	<b>1</b>
<b>Kaneohe Region</b>	<b>2011 Median</b>	<b>2012 Median</b>	<b>+/-</b>	<b>+/-</b>	<b>2011 Sold</b>	<b>2012 Sold</b>	<b>+/-</b>	<b>+/-</b>
BAYVIEW GOLF COURSE	\$ 950,000	-	-	-	1	-	-	-
CLUB VIEW ESTATE	\$ 645,000	-	-	-	1	-	-	-
COUNTRY CLUB	\$ 1,100,000	-	-	-	1	-	-	-
CROWN TERRACE	\$ 725,000	\$ 640,000	-11.7%	-\$85,000	1	1	0.0%	0
HAIKU PARK	\$ 822,500	-	-	-	1	-	-	-
HAIKU PLANTATION	\$ 1,150,000	-	-	-	1	-	-	-
HAIKU VILLAGE	\$ 680,000	-	-	-	1	-	-	-
HALEKAUWILA	\$ 385,000	\$ 405,000	5.2%	\$20,000	1	1	0.0%	0
HAUULA	\$ 320,000	\$ 375,000	17.2%	\$55,000	5	1	-80.0%	-4
KAAAWA	-	\$ 730,000	-	-	-	1	-	-
KAALAEA	-	\$ 570,000	-	-	-	1	-	-
KANEOHE TOWN	-	\$ 561,000	-	-	-	1	-	-
KAPUNA HALA	\$ 569,500	\$ 710,000	24.7%	\$140,500	2	1	-50.0%	-1
MAHINUI	\$ 752,500	-	-	-	2	-	-	-
MIKIOLA	\$ 460,000	-	-	-	1	-	-	-
PIKOILOA	-	\$ 531,250	-	-	-	2	-	-
PUOHALA VILLAGE	-	\$ 825,000	-	-	-	1	-	-
VALLEY ESTATES	\$ 482,000	-	-	-	1	-	-	-
<b>Kaneohe Region</b>	<b>\$ 590,000</b>	<b>\$ 577,500</b>	<b>-2.1%</b>	<b>-\$12,500</b>	<b>19</b>	<b>10</b>	<b>-47.4%</b>	<b>-9</b>

Single Family Solds - December 2012 vs 2011 (Based on region and neighborhood groupings as listed in MLS) - Page 4 of 4

North Shore Region	2011 Median	2012 Median	+/-	+/-	2011 Sold	2012 Sold	+/-	+/-
HALEIWA	\$ 610,000	-	-	-	1	-	-	-
MOKULEIA	\$ 2,450,000	-	-	-	1	-	-	-
PUPUKEA	\$ 725,000	-	-	-	1	-	-	-
SUNSET AREA	\$ 850,000	\$ 2,875,000	238.2%	\$2,025,000	1	2	100.0%	1
SUNSET/VELZY	\$ 2,600,000	-	-	-	1	-	-	-
WAIALUA	\$ 581,625	\$ 507,500	-12.7%	-\$74,125	3	2	-33.3%	-1
<b>North Shore Region</b>	<b>\$ 675,000</b>	<b>\$ 1,372,500</b>	<b>103.3%</b>	<b>\$697,500</b>	<b>8</b>	<b>4</b>	<b>-50.0%</b>	<b>-4</b>
Waipahu Region	2011 Median	2012 Median	+/-	+/-	2011 Sold	2012 Sold	+/-	+/-
HARBOR VIEW	\$ 409,000	\$ 345,000	-15.6%	-\$64,000	1	2	100.0%	1
RENAISSANCE	-	\$ 629,000	-	-	-	2	-	-
ROYAL KUNIA	\$ 468,000	\$ 589,000	25.9%	\$121,000	5	9	80.0%	4
VILLAGE PARK	\$ 410,000	\$ 479,500	17.0%	\$69,500	1	2	100.0%	1
WAIKELE	\$ 535,000	\$ 715,000	33.6%	\$180,000	1	3	200.0%	2
WAIPAHU-GARDENS	\$ 440,000	-	-	-	1	-	-	-
WAIPAHU-TRIANGLE	-	\$ 510,000	-	-	-	1	-	-
WAIPAHU-LOWER	\$ 470,000	\$ 500,000	6.4%	\$30,000	4	7	75.0%	3
WAIPIO GENTRY	\$ 527,500	\$ 580,000	10.0%	\$52,500	2	5	150.0%	3
<b>Waipahu Region</b>	<b>\$ 445,000</b>	<b>\$ 524,900</b>	<b>18.0%</b>	<b>\$79,900</b>	<b>15</b>	<b>31</b>	<b>106.7%</b>	<b>16</b>
Metro Region	2011 Median	2012 Median	+/-	+/-	2011 Sold	2012 Sold	+/-	+/-
ALEWA HEIGHTS	\$ 760,000	\$ 649,500	-14.5%	-\$110,500	1	4	300.0%	3
ALIAMANU	\$ 424,950	-	-	-	2	-	-	-
KAKAAKO	\$ 700,000	-	-	-	1	-	-	-
KALIHI-LOWER	\$ 707,000	-	-	-	2	-	-	-
KALIHI-UPPER	\$ 570,000	\$ 560,000	-1.8%	-\$10,000	1	3	200.0%	2
KALIHI UKA	-	\$ 625,000	-	-	-	1	-	-
KALIHI VALLEY	-	\$ 515,000	-	-	-	2	-	-
KAM HEIGHTS	\$ 555,750	\$ 700,000	26.0%	\$144,250	2	3	50.0%	1
KAPALAMA	\$ 360,500	\$ 520,000	44.2%	\$159,500	2	1	-50.0%	-1
LAKESIDE	\$ 850,000	-	-	-	1	-	-	-
MANOA AREA	\$ 950,000	\$ 1,312,500	38.2%	\$362,500	1	4	300.0%	3
MANOA-UPPER	\$ 860,000	\$ 575,000	-33.1%	-\$285,000	1	1	0.0%	0
MANOA-LOWER	\$ 880,000	-	-	-	1	-	-	-
MANOA-WOODLAWN	\$ 1,230,000	-	-	-	2	-	-	-
MOANALUA GARDENS	-	\$ 860,000	-	-	-	1	-	-
MOANALUA VALLEY	\$ 690,000	-	-	-	1	-	-	-
MOIILILI	\$ 640,000	\$ 725,000	13.3%	\$85,000	1	3	200.0%	2
NUUANU AREA	\$ 880,000	\$ 800,000	-9.1%	-\$80,000	4	1	-75.0%	-3
NUUANU LOWER	\$ 660,900	\$ 810,000	22.6%	\$149,100	1	3	200.0%	2
PACIFIC HEIGHTS	\$ 705,500	-	-	-	2	-	-	-
PAUOA VALLEY	\$ 850,000	\$ 750,000	-11.8%	-\$100,000	1	1	0.0%	0
PUUNUI	\$ 574,500	\$ 695,000	21.0%	\$120,500	2	1	-50.0%	-1
PUNCHBOWL-AREA	\$ 615,500	\$ 680,000	10.5%	\$64,500	2	1	-50.0%	-1
UNIVERSITY	-	\$ 946,000	-	-	-	1	-	-
<b>Metro Region</b>	<b>\$ 690,000</b>	<b>\$ 710,000</b>	<b>2.9%</b>	<b>\$20,000</b>	<b>31</b>	<b>31</b>	<b>0.0%</b>	<b>0</b>

Condo Solds - December 2012 vs 2011 (Based on region and neighborhood groupings as listed in MLS) - Page 1 of 3

Central Region	2011 Median	2012 Median	+/-	+/-	2011 Sold	2012 Sold	+/-	+/-
LAUNANI VALLEY	\$ 232,210	\$ 293,750	26.5%	\$61,540	4	2	-50.0%	-2
MILILANI AREA	\$ 272,500	\$ 335,000	22.9%	\$62,500	10	9	-10.0%	-1
MILILANI MAUKA	\$ 294,625	\$ 328,000	11.3%	\$33,375	8	11	37.5%	3
WAHIAWA HEIGHTS	\$ 64,900	-	-	-	1	-	-	-
WILIKINA	\$ 124,000	-	-	-	4	-	-	-
WAIPIO ACRES/WAIKALANI WOOD	\$ 132,500	\$ 111,500	-15.8%	-\$21,000	8	2	-75.0%	-6
<b>Central Region</b>	<b>\$ 230,000</b>	<b>\$ 327,500</b>	<b>42.4%</b>	<b>\$97,500</b>	<b>35</b>	<b>24</b>	<b>-31.4%</b>	<b>-11</b>
Diamond Hd Region	2011 Median	2012 Median	+/-	+/-	2011 Sold	2012 Sold	+/-	+/-
DIAMOND HEAD	\$ 565,000	\$ 788,750	39.6%	\$223,750	7	8	14.3%	1
KAHALA AREA	-	\$ 1,350,000	-	-	-	1	-	-
PAIKO LAGOON	-	\$ 530,000	-	-	-	1	-	-
PALOLO	-	\$ 155,000	-	-	-	1	-	-
ST. LOUIS	-	\$ 480,000	-	-	-	1	-	-
WAIALAE G/C	\$ 50,000	\$ 590,000	1080.0%	\$540,000	1	1	0.0%	0
WAIALAE NUI VLY	\$ 524,500	\$ 577,500	10.1%	\$53,000	2	2	0.0%	0
<b>Diamond Hd Region</b>	<b>\$ 524,500</b>	<b>\$ 577,500</b>	<b>10.1%</b>	<b>\$53,000</b>	<b>10</b>	<b>15</b>	<b>50.0%</b>	<b>5</b>
Ewa Plain Region	2011 Median	2012 Median	+/-	+/-	2011 Sold	2012 Sold	+/-	+/-
AG/INDL/NAVY	-	\$ 173,000	-	-	-	2	-	-
EWA	\$ 199,500	\$ 185,000	-7.3%	-\$14,500	2	9	350.0%	7
EWA BEACH	-	\$ 161,000	-	-	-	1	-	-
EWA GEN	-	\$ 243,875	-	-	-	2	-	-
EWA GEN SODA CREEK	\$ 242,500	-	-	-	2	-	-	-
KAPOLEI	\$ 302,086	\$ 285,000	-5.7%	-\$17,086	5	1	-80.0%	-4
KO OLINA	\$ 725,000	\$ 400,000	-44.8%	-\$325,000	3	5	66.7%	2
WESTLOCH FAIRWAY	\$ 292,000	\$ 281,950	-3.4%	-\$10,050	1	2	100.0%	1
OCEAN POINTE	\$ 333,000	\$ 344,250	3.4%	\$11,250	4	4	0.0%	0
<b>Ewa Plain Region</b>	<b>\$ 302,086</b>	<b>\$ 274,500</b>	<b>-9.1%</b>	<b>-\$27,586</b>	<b>17</b>	<b>26</b>	<b>52.9%</b>	<b>9</b>
Hawaii Kai Region	2011 Median	2012 Median	+/-	+/-	2011 Sold	2012 Sold	+/-	+/-
HAAHIONE-LOWER	\$ 479,000	\$ 443,000	-7.5%	-\$36,000	4	5	25.0%	1
MARINERS VALLEY	\$ 425,000	-	-	-	1	-	-	-
NAPUA POINT	-	\$ 799,000	-	-	-	1	-	-
WEST MARINA	\$ 505,000	\$ 647,000	28.1%	\$142,000	9	14	55.6%	5
<b>Hawaii Kai Region</b>	<b>\$ 502,500</b>	<b>\$ 581,250</b>	<b>15.7%</b>	<b>\$78,750</b>	<b>14</b>	<b>20</b>	<b>42.9%</b>	<b>6</b>
Kailua Region	2011 Median	2012 Median	+/-	+/-	2011 Sold	2012 Sold	+/-	+/-
AIKAHI PARK	-	\$ 432,250	-	-	-	2	-	-
ENCHANTED LAKE	-	\$ 530,000	-	-	-	1	-	-
KAILUA TOWN	\$ 415,000	\$ 395,000	-4.8%	-\$20,000	4	7	75.0%	3
WAIMANALO	-	\$ 352,500	-	-	-	2	-	-
KUKILAKILA	\$ 675,000	\$ 690,000	2.2%	\$15,000	2	1	-50.0%	-1
<b>Kailua Region</b>	<b>\$ 440,250</b>	<b>\$ 405,000</b>	<b>-8.0%</b>	<b>-\$35,250</b>	<b>6</b>	<b>13</b>	<b>116.7%</b>	<b>7</b>
Kaneohe Region	2011 Median	2012 Median	+/-	+/-	2011 Sold	2012 Sold	+/-	+/-
COUNTRY CLUB	\$ 419,500	\$ 499,900	19.2%	\$80,400	1	1	0.0%	0
HAIKU VILLAGE	-	\$ 485,000	-	-	-	1	-	-
HALE KOU	\$ 255,000	-	-	-	1	-	-	-
KAAAWA	\$ 293,500	-	-	-	1	-	-	-
LILIPUNA	\$ 441,000	\$ 277,500	-37.1%	-\$163,500	1	1	0.0%	0
MAHINUI	-	\$ 360,000	-	-	-	1	-	-
PUNALUU	-	\$ 160,000	-	-	-	1	-	-
PUOHALA VILLAGE	-	\$ 176,000	-	-	-	1	-	-
PUUALII	\$ 542,500	\$ 378,000	-30.3%	-\$164,500	2	1	-50.0%	-1
TEMPLE VALLEY	\$ 400,000	\$ 455,000	13.8%	\$55,000	3	4	33.3%	1
WINDWARD ESTATES	\$ 291,000	\$ 197,000	-32.3%	-\$94,000	6	5	-16.7%	-1
<b>Kaneohe Region</b>	<b>\$ 365,000</b>	<b>\$ 349,500</b>	<b>-4.2%</b>	<b>-\$15,500</b>	<b>15</b>	<b>16</b>	<b>6.7%</b>	<b>1</b>

Condo Solds - December 2012 vs 2011 (Based on region and neighborhood groupings as listed in MLS) - Page 2 of 3

Leeward Region	2011 Median	2012 Median	+/-	+/-	2011 Sold	2012 Sold	+/-	+/-
MAILI	\$ 107,600	\$ 282,000	162.1%	\$174,400	1	5	400.0%	4
WAIANA	\$ 56,000	-	-	-	3	-	-	-
MAKAHA	\$ 99,000	\$ 130,000	31.3%	\$31,000	15	3	-80.0%	-12
<b>Leeward Region</b>	<b>\$ 90,000</b>	<b>\$ 152,000</b>	<b>68.9%</b>	<b>\$62,000</b>	<b>19</b>	<b>8</b>	<b>-57.9%</b>	<b>-11</b>

Makakilo Region	2011 Median	2012 Median	+/-	+/-	2011 Sold	2012 Sold	+/-	+/-
MAKAKILO-UPPER	\$ 307,600	\$ 231,500	-24.7%	-\$76,100	2	6	200.0%	4
<b>Makakilo Region</b>	<b>\$ 307,600</b>	<b>\$ 231,500</b>	<b>-24.7%</b>	<b>-\$76,100</b>	<b>2</b>	<b>6</b>	<b>200.0%</b>	<b>4</b>

Metro Region	2011 Median	2012 Median	+/-	+/-	2011 Sold	2012 Sold	+/-	+/-
ALA MOANA	\$ 155,500	\$ 150,000	-3.5%	-\$5,500	14	12	-14.3%	-2
CHINATOWN	\$ 500,000	\$ 468,000	-6.4%	-\$32,000	3	4	33.3%	1
DOWNTOWN	\$ 401,000	\$ 262,500	-34.5%	-\$138,500	9	8	-11.1%	-1
HOLIDAY MART	\$ 200,000	\$ 265,500	32.8%	\$65,500	4	2	-50.0%	-2
KAKAAKO	\$ 575,000	\$ 688,000	19.7%	\$113,000	13	19	46.2%	6
KAPAHULU	\$ 256,250	\$ 275,000	7.3%	\$18,750	4	5	25.0%	1
KAPALAMA	\$ 225,000	-	-	-	1	-	-	-
KAPIO/KINAU/WARD	\$ 232,800	\$ 470,000	101.9%	\$237,200	1	3	200.0%	2
KAPIOLANI	\$ 302,500	\$ 374,000	23.6%	\$71,500	10	11	10.0%	1
KUAKINI	\$ 310,000	\$ 370,000	19.4%	\$60,000	1	1	0.0%	0
LILIHA	-	\$ 272,500	-	-	-	2	-	-
MAKIKI	\$ 205,000	\$ 255,000	24.4%	\$50,000	2	7	250.0%	5
MAKIKI AREA	\$ 255,500	\$ 318,500	24.7%	\$63,000	14	14	0.0%	0
MANOA AREA	\$ 580,000	-	-	-	1	-	-	-
MCCULLY	\$ 187,000	\$ 120,000	-35.8%	-\$67,000	3	1	-66.7%	-2
MOIILILI	\$ 297,000	\$ 285,000	-4.0%	-\$12,000	5	11	120.0%	6
NUUANU-LOWER	\$ 284,500	-	-	-	2	-	-	-
PALAMA	-	\$ 207,000	-	-	-	1	-	-
PAWAA	\$ 325,000	\$ 370,000	13.8%	\$45,000	3	3	0.0%	0
PAUOA VALLEY	-	\$ 245,000	-	-	-	1	-	-
PUNAHOU	-	\$ 340,000	-	-	-	3	-	-
PUNCHBOWL AREA	\$ 355,000	\$ 380,000	7.0%	\$25,000	7	9	28.6%	2
PUNCHBOWL-LOWER	\$ 190,000	\$ 420,000	121.1%	\$230,000	2	1	-50.0%	-1
SALT LAKE	\$ 265,000	\$ 270,000	1.9%	\$5,000	16	18	12.5%	2
WAIKIKI	\$ 290,000	\$ 300,000	3.4%	\$10,000	63	95	50.8%	32
<b>Metro Region</b>	<b>\$ 287,500</b>	<b>\$ 330,000</b>	<b>14.8%</b>	<b>\$42,500</b>	<b>178</b>	<b>231</b>	<b>29.8%</b>	<b>53</b>

North Shore Region	2011 Median	2012 Median	+/-	+/-	2011 Sold	2012 Sold	+/-	+/-
WAIALUA	\$ 305,000	\$ 292,000	-4.3%	-\$13,000	3	1	-66.7%	-2
MOKULEIA	-	\$ 395,000	-	-	-	1	-	-
KUILIMA	\$ 687,277	\$ 415,000	-39.6%	-\$272,277	4	3	-25.0%	-1
<b>North Shore Region</b>	<b>\$ 396,553</b>	<b>\$ 395,000</b>	<b>-0.4%</b>	<b>-\$1,553</b>	<b>7</b>	<b>5</b>	<b>-28.6%</b>	<b>-2</b>

Pearl City Region	2011 Median	2012 Median	+/-	+/-	2011 Sold	2012 Sold	+/-	+/-
AIEA AREA	-	\$ 215,000	-	-	-	1	-	-
HALAWA	\$ 256,500	\$ 320,000	24.8%	\$63,500	2	2	0.0%	0
MANANA	\$ 186,000	-	-	-	1	-	-	-
MILITARY	\$ 285,000	-	-	-	1	-	-	-
NEWTOWN	\$ 348,000	\$ 343,500	-1.3%	-\$4,500	1	2	100.0%	1
PEARLRIDGE	\$ 306,500	\$ 335,000	9.3%	\$28,500	12	13	8.3%	1
PEARL CITY-UPPER	-	\$ 185,000	-	-	-	2	-	-
WAIU	\$ 237,500	\$ 162,500	-31.6%	-\$75,000	4	4	0.0%	0
WAIMALU	-	\$ 222,000	-	-	-	1	-	-
WAILUNA	\$ 213,000	\$ 383,800	80.2%	\$170,800	1	3	200.0%	2
<b>Pearl City Region</b>	<b>\$ 291,250</b>	<b>\$ 326,000</b>	<b>11.9%</b>	<b>\$34,750</b>	<b>22</b>	<b>28</b>	<b>27.3%</b>	<b>6</b>

**Condo Solds - December 2012 vs 2011 (Based on region and neighborhood groupings as listed in MLS) - Page 3 of 3**

<b>Waipahu Region</b>	<b>2011 Median</b>	<b>2012 Median</b>	<b>+/-</b>	<b>+/-</b>	<b>2011 Sold</b>	<b>2012 Sold</b>	<b>+/-</b>	<b>+/-</b>
WAIKELE	\$ 318,000	\$ 340,000	6.9%	\$22,000	4	5	25.0%	1
WAIPAHU-LOWER	\$ 142,500	\$ 205,250	44.0%	\$62,750	4	2	-50.0%	-2
WAIPIO GENTRY	\$ 222,000	\$ 272,500	22.7%	\$50,500	4	2	-50.0%	-2
VILLAGE PARK	\$ 195,000	-	-	-	1	-	-	-
<b>Waipahu Region</b>	<b>\$ 230,000</b>	<b>\$ 275,000</b>	<b>19.6%</b>	<b>\$45,000</b>	<b>13</b>	<b>9</b>	<b>-30.8%</b>	<b>-4</b>